

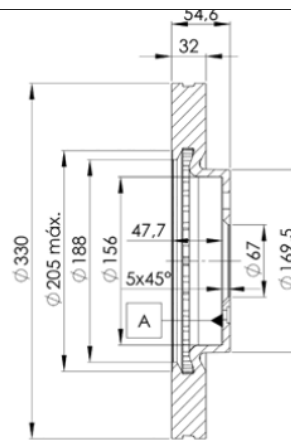
LISTA DE APLICACIONES - BUYERS GUIDE

78BD3507-2



Weight: 23.616

| O.E.M. | MAKE |
|---------------|---------------|
| 164 421 04 12 | MERCEDES-BENZ |
| 164 421 13 12 | MERCEDES-BENZ |



78BD3507-2

E1 90R-02C0452/0120



Ø330x32x54.6

MAKE
MERCEDES-BENZ



| Trac. | CC | Kw | CV |
|-------|----|----|----|
|-------|----|----|----|



Front / Rear

MERCEDES-BENZ

M-Class II (W164) 02.05-12.12

SUV (Executive SUV-J Segment)

| | | | | | | | | |
|---|--------|----------|-----|------|-----|-----|-------------|---|
| ML 300 4-matic (164.182) (M 272.945) | | Gasolina | 4WD | 2996 | 170 | 231 | 03.10-12.11 | ■ |
| ML 350 4-matic (164.186) (M 272.967) | | Gasolina | 4WD | 3498 | 200 | 272 | 02.05-12.11 | ■ |
| ML 500 4-matic (164.175) (M 113.964) | | Gasolina | 4WD | 4966 | 225 | 306 | 07.05-12.11 | ■ |
| ML 280 CDI 4-matic (164.120) (OM 642.940) | | Diesel | 4WD | 2987 | 140 | 190 | 07.05-07.09 | ■ |
| ML 300 CDI 4-matic (164.121) (OM 642.940) | | Diesel | 4WD | 2987 | 140 | 190 | 07.09-12.11 | ■ |
| ML 300 CDI 4-matic (164.121) (OM 642.820) | Rim 17 | Diesel | 4WD | 2987 | 150 | 204 | 02.10-12.11 | ■ |
| ML 320 CDI 4-matic (164.124, 164.125, 164.122) (OM 642.820) | | Diesel | 4WD | 2987 | 155 | 211 | 07.05-07.11 | ■ |
| ML 320 CDI 4-matic (164.124, 164.125, 164.122) (OM 642.940) | | Diesel | 4WD | 2987 | 155 | 211 | 07.05-07.11 | ■ |
| ML 350 CDI 4-matic (164.125, 164.124) (OM 642.820) | | Diesel | 4WD | 2987 | 155 | 211 | 09.09-12.11 | ■ |
| ML 350 CDI 4-Matic | | Diesel | 4WD | 2987 | 157 | 214 | 09.09-12.10 | ■ |
| ML 320 CDI 4-matic | | Diesel | 4WD | 2987 | 160 | 218 | 09.06-12.08 | ■ |
| ML 320 CDI 4-matic (164.124, 164.125, 164.122) (OM 642.940) | | Diesel | 4WD | 2987 | 165 | 224 | 07.05-07.09 | ■ |
| ML 350 CDI 4-matic (164.125, 164.124) (OM 642.940) | | Diesel | 4WD | 2987 | 165 | 224 | 07.09-12.11 | ■ |
| ML 350 CDI 4-matic (164.125, 164.124) (OM 642.820) | | Diesel | 4WD | 2987 | 170 | 231 | 02.10-12.11 | ■ |

R-Class (W251, V251) 08.05-10.17

MPV (Large MPV-M1 Segment)

| | | | | | | | | |
|--------------------------------------|-----------------|----------|-----|------|-----|-----|-------------|---|
| R 280 (251.054, 251.154) (M 272.945) | | Gasolina | RWD | 2996 | 170 | 231 | 01.07-12.14 | ■ |
| R 280 4-matic (251.062) (M 272.945) | | Gasolina | 4WD | 2996 | 170 | 231 | 05.07-12.11 | ■ |
| R 300 (251.054, 251.154) (M 272.945) | Short Wheelbase | Gasolina | RWD | 2996 | 170 | 231 | 07.09-12.14 | ■ |
| R 300 4-matic (251.062) (M 272.945) | | Gasolina | 4WD | 2996 | 170 | 231 | 07.09-12.11 | ■ |
| R 350 (251.056, 251.156) (M 272.967) | | Gasolina | RWD | 3498 | 200 | 272 | 01.07-12.12 | ■ |

LISTA DE APLICACIONES - BUYERS GUIDE

| | | | | | | | | |
|---|--------|----------|-----|------|-----|-----|-------------|---|
| R 350 4-matic (251.065, 251.165) (M 272.967) | | Gasolina | 4WD | 3498 | 200 | 272 | 08.05-12.12 | ■ |
| R 500 4-matic (251.075, 251.175) (M 113.960) | | Gasolina | 4WD | 4966 | 225 | 306 | 08.05-12.14 | ■ |
| R 500 4-matic (251.075, 251.175) (M 113.971) | | Gasolina | 4WD | 4966 | 225 | 306 | 08.05-12.14 | ■ |
| R 280 CDI (251.121, 251.026, 251.126) (OM 642.870) | | Diesel | RWD | 2987 | 140 | 190 | 05.06-12.12 | ■ |
| R 280 CDI (251.121, 251.026, 251.126) (OM 642.872) | | Diesel | RWD | 2987 | 140 | 190 | 05.06-12.12 | ■ |
| R 280 CDI (251.121, 251.026, 251.126) (OM 642.950) | | Diesel | RWD | 2987 | 140 | 190 | 05.06-12.12 | ■ |
| R 280 CDI 4-matic (251.020) (OM 642.950) | | Diesel | 4WD | 2987 | 140 | 190 | 05.06-12.12 | ■ |
| R 300 CDI (251.021, 251.121, 251.026, 251.126) (OM 642.870) | | Diesel | RWD | 2987 | 140 | 190 | 07.09-12.12 | ■ |
| R 300 CDI (251.021, 251.121, 251.026, 251.126) (OM 642.872) | | Diesel | RWD | 2987 | 140 | 190 | 07.09-12.12 | ■ |
| R 300 CDI (251.021, 251.121, 251.026, 251.126) (OM 642.950) | | Diesel | RWD | 2987 | 140 | 190 | 07.09-12.12 | ■ |
| R 300 CDI 4-matic (251.020) (OM 642.950) | Rim 17 | Diesel | 4WD | 2987 | 140 | 190 | 07.09-12.12 | ■ |
| R 320 CDI 4-matic (251.125) (OM 642.870) | | Diesel | 4WD | 2987 | 155 | 211 | 01.06-12.12 | ■ |
| R 320 CDI 4-matic (251.125) (OM 642.950) | | Diesel | 4WD | 2987 | 155 | 211 | 01.06-12.12 | ■ |
| R 350 CDI 4-matic (251.124, 251.125) (OM 642.870) | Rim 17 | Diesel | 4WD | 2987 | 155 | 211 | 01.06-12.14 | ■ |
| R 350 CDI 4-matic (251.124, 251.125) (OM 642.950) | Rim 17 | Diesel | 4WD | 2987 | 155 | 211 | 01.06-12.14 | ■ |
| R 320 CDI 4-matic (251.022, 251.122) (OM 642.950) | | Diesel | 4WD | 2987 | 165 | 224 | 01.06-07.10 | ■ |
| R 350 CDI 4-matic (251.023, 251.123) (OM 642.950) | Rim 17 | Diesel | 4WD | 2987 | 165 | 224 | 07.09-12.12 | ■ |
| R 350 CDI 4-matic (251.023, 251.123) (OM 642.872) | | Diesel | 4WD | 2987 | 195 | 265 | 08.10-12.14 | ■ |