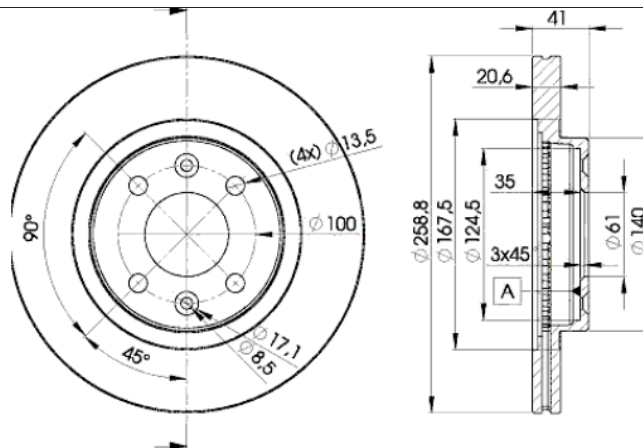


# LISTA DE APLICACIONES - BUYERS GUIDE

## 78BD3550-2



Weight: 9.936



## 78BD3550-2



Ø259x20.6x41

### MAKE

DACIA

LADA

MAHINDRA

MAHINDRA RENAULT

NISSAN

RENAULT



Trac.	CC	Kw	CV
-------	----	----	----



Front / Rear

### DACIA

#### LOGAN (US\_) 03.08-

#### Pickup (Compact car-C Segment)

1.4 (K7J 710)		Gasolina	FWD	1390	55	75	01.09-	■
1.6 MPI 85 (K7M 800)		Gasolina	FWD	1598	62	84	05.10-	■
1.6 16V (US1Y) (K4M 690)		Gasolina	FWD	1598	77	105	01.10-08.13	■
1.6 BiFuel (K7M 800)		Gasol./G as (LPG)	FWD	1598	62	84	05.10-	■
1.5 dCi (US00, US0J, US0Y) (K9K 794)		Diesel	FWD	1461	48	65	04.08-12.12	■
1.5 dCi (K9K 892)		Diesel	FWD	1461	55	75	05.10-	■
1.5 dCi (K9K 892)		Diesel	FWD	1461	65	88	05.10-	■

#### LOGAN (LS\_) 08.04-

#### Saloon (Compact car-C Segment)

1.2 16V (LS1N, LS02, BS02) (D4F 732)	06/09-	Gasolina	FWD	1149	55	75	02.06-	■
1.6 MPI 85 (K7M 800)		Gasolina	FWD	1598	62	84	05.10-	■
1.6 (LSOB, LSOD, LSOF, LSOH) (K7M 710)		Gasolina	FWD	1598	64	87	09.04-	■
1.6 16V (LS09, LS0L, LS0M, LS0P, LS0V, LS18, LS1S, LS1V,...) (K4M 690)		Gasolina	FWD	1598	77	105	02.06-	■
1.6 16V (LS09, LS0L, LS0M, LS0P, LS0V, LS18, LS1S, LS1V,...) (K4M 694)		Gasolina	FWD	1598	77	105	02.06-	■
1.6 16V (LS09, LS0L, LS0M, LS0P, LS0V, LS18, LS1S, LS1V,...) (K4M 696)		Gasolina	FWD	1598	77	105	02.06-	■
1.6 16V (LS09, LS0L, LS0M, LS0P, LS0V, LS18, LS1S, LS1V,...) (K4M 697)		Gasolina	FWD	1598	77	105	02.06-	■
1.6 16V (LS09, LS0L, LS0M, LS0P, LS0V, LS18, LS1S, LS1V,...) (K4M 698)		Gasolina	FWD	1598	77	105	02.06-	■
1.2 16V LPG (D4F 734)		Gasol./G as (LPG)	FWD	1149	55	75	02.06-	■
1.4 MPI LPG (LS0C) (K7J 710)		Gasol./G as (LPG)	FWD	1390	55	75	02.06-12.12	■
1.4 MPI LPG (LS0C) (K7J 714)		Gasol./G as (LPG)	FWD	1390	55	75	02.06-12.12	■

# LISTA DE APLICACIONES - BUYERS GUIDE

1.6 BiFuel (K7M 718)		Gasol./Gas (LPG)	FWD	1598	62	84	05.10-	■
1.6 LPG (K7M 718)		Gasol./Gas (LPG)	FWD	1598	64	87	08.04-03.11	■
1.0 Hi-Flex (LS0R, LS1G) (D4D 760)		Gasol./Etanol	FWD	999	56	76	01.11-10.12	■
1.6 16V Flexifuel (K4M 696)		Gasol./Etanol	FWD	1598	77	105	07.10-	■
1.5 dCi (LS0J, LS0Y) (K9K 790)		Diesel	FWD	1461	48	65	09.05-	■
1.5 dCi (LS04) (K9K 892)		Diesel	FWD	1461	55	75	05.10-12.12	■
1.5 dCi (LS04) (K9K 892)		Diesel	FWD	1461	65	88	05.10-	■
<b>LOGAN EXPRESS (FS_) 10.07-</b>					<b>Estate Van (Compact car-C Segment)</b>			
1.6 MPI 85 (K7M 800)		Gasolina	FWD	1598	62	84	05.10-	■
1.6 LPG (K7M 818)		Gasol./Gas (LPG)	FWD	1598	62	84	05.10-12.12	■
1.5 dCi (FS0Y, FS00, FS0J)		Diesel	FWD	1461	48	65	10.07-12.12	■
1.5 dCi (FS0K) (K9K 792)		Diesel	FWD	1461	50	68	03.09-	■
1.5 dCi (K9K 892)		Diesel	FWD	1461	55	75	05.10-	■
1.5 dCi (FS0W) (K9K 796)		Diesel	FWD	1461	63	86	03.09-	■
1.5 dCi (K9K 892)		Diesel	FWD	1461	65	88	05.10-	■
<b>LOGAN MCV (KS_) 02.07-</b>					<b>Estate (Compact car-C Segment)</b>			
1.4 (K7J 710)		Gasolina	FWD	1390	55	75	02.07-	■
1.6 MPI 85 (K7M 800)		Gasolina	FWD	1598	62	84	05.10-	■
1.6 (KS0B, KS0D, KS0F) (K7M 710)		Gasolina	FWD	1598	64	87	02.07-06.13	■
1.6 BiFuel (K7M 718)		Gasol./Gas (LPG)	FWD	1598	62	84	05.10-	■
1.6 BiFuel (K7M 710)		Gasol./Gas (LPG)	FWD	1598	64	87	11.08-	■
1.6 16V Hi-Flex (K4M 690)		Gasol./Etanol	FWD	1598	77	105	11.09-	■
1.5 dCi (K9K 790)		Diesel	FWD	1461	48	65	04.08-06.13	■
1.5 dCi (KS0K) (K9K 792)		Diesel	FWD	1461	50	68	02.07-	■
1.5 dCi (KS04) (K9K 892)		Diesel	FWD	1461	55	75	05.10-06.13	■
1.5 dCi (KS0W) (K9K 796)		Diesel	FWD	1461	63	86	09.07-12.12	■
1.5 dCi (KS04) (K9K 892)		Diesel	FWD	1461	65	88	05.10-	■
<b>SANDERO (B90) 06.08-</b>					<b>Hatchback (Compact car-C Segment)</b>			
1.2 16V (D4F 732)		Gasolina	FWD	1149	55	75	11.08-	■
1.6 MPI 85 (BS03) (K7M 800)		Gasolina	FWD	1598	62	84	05.10-06.13	■
1.6 16V (K4M 690)		Gasolina	FWD	1598	77	105	07.11-	■
1.6 16V (K4M 694)		Gasolina	FWD	1598	77	105	07.11-	■
1.2 16V LPG (D4F 732)		Gasol./Gas (LPG)	FWD	1149	55	75	11.08-	■
1.4 MPI LPG (K7J 714)		Gasol./Gas (LPG)	FWD	1390	53	72	01.09-	■
1.6 LPG (BS03) (K7M 818)		Gasol./Gas (LPG)	FWD	1598	60	82	01.11-12.12	■
1.6 LPG (K7M 818)		Gasol./Gas (LPG)	FWD	1598	62	84	05.10-10.12	■
1.6 LPG (K7M 718)		Gasol./Gas (LPG)	FWD	1598	64	87	06.08-12.12	■
1.0 Hi-Flex (D4D 760)		Gasol./Etanol	FWD	999	56	76	01.11-12.12	■
1.6 Hi-Flex (BS1H) (K7M 732)		Gasol./Etanol	FWD	1598	64	87	06.08-12.12	■
1.5 dCi (K9K 790)		Diesel	FWD	1461	48	65	11.08-	■
1.5 dCi (K9K 892)		Diesel	FWD	1461	55	75	05.10-	■
1.5 dCi (K9K 796)		Diesel	FWD	1461	63	86	11.08-	■
1.5 dCi (K9K 892)		Diesel	FWD	1461	65	88	05.10-	■

# LISTA DE APLICACIONES - BUYERS GUIDE

LADA								
LARGUS (KS0_, RS0_, KSA_) 03.12-					Estate Van (Compact car-C Segment)			
1.6 (KS045, RS045) (21129)		Gasolina	FWD	1597	78	106	09.17-	■
1.6 (KS0Y5, RS0Y5) (K4M)		Gasolina	FWD	1598	75	102	04.16-	■
1.6 CNG (KSA45) (21129)		Gasol./Gas (CNG)	FWD	1597	69	94	11.18-	■
LARGUS (KS0_, RS0_, KSA_) 03.12-					Estate (Compact car-C Segment)			
1.6 (KS035, RS035) (11189)		Gasolina	FWD	1597	64	87	04.16-03.21	■
1.6 (KS045, RS045) (21129)		Gasolina	FWD	1597	78	106	09.17-	■
1.6 (RS0Y5, KS0Y5) (K7M)		Gasolina	FWD	1598	62	84	03.12-	■
1.6 (KS0Y5, RS0Y5) (K4M)		Gasolina	FWD	1598	77	105	03.12-	■
1.6 CNG (KSA45) (21129)		Gasol./Gas (CNG)	FWD	1597	69	94	11.18-	■
LARGUS (FS0_, FSA_) 03.12-					Van (LCVs-N1 Segment)			
1.6 (FS035) (11189)		Gasolina	FWD	1597	64	87	06.16-	■
1.6 (FS045) (21129)		Gasolina	FWD	1597	78	106	09.17-	■
1.6 (FS015) (K7M)		Gasolina	FWD	1598	62	84	03.12-	■
1.6 (FS0Y5) (K4M)		Gasolina	FWD	1598	77	105	03.12-	■
1.6 CNG (FSA45) (21129)		Gasol./Gas (CNG)	FWD	1597	69	94	11.18-	■
MAHINDRA								
VERITO 01.11-					Saloon (Compact car-C Segment)			
1.4		Gasolina	FWD	1390	56	76	01.11-	■
1.5 dCi		Diesel	RWD	1461	48	66	01.11-	■
VERITO VIBE 06.13-					Saloon (Compact car-C Segment)			
1.5 dCi		Diesel	RWD	1461	48	66	06.13-	■
MAHINDRA RENAULT								
LOGAN 04.07-					Saloon (Compact car-C Segment)			
1.4		Gasolina	FWD	1390	55	75	04.07-	■
1.4 CNG		Gasolina	FWD	1390	55	75	12.10-	■
1.6 CNG		Gasolina	FWD	1598	63	86	04.07-	■
1.6 CNG		Gasolina	FWD	1598	63	86	04.07-	■
1.5 D		Diesel	RWD	1461	48	65	04.07-	■
VERITO 03.11-					Saloon (Compact car-C Segment)			
1.4		Gasolina	FWD	1390	56	76	03.11-	■
1.5 D		Diesel	RWD	1461	48	65	03.11-	■
NISSAN								
KUBISTAR (X76) 08.03-10.09					MPV (Large MPV-M1 Segment)			
1.2		Gasolina	FWD	1149	44	60	08.03-10.09	■
1.2 16V		Gasolina	FWD	1149	55	75	04.06-10.09	■
1.6 16V		Gasolina	FWD	1598	70	95	08.03-10.09	■
1.5 dCi		Diesel	FWD	1461	42	57	08.03-10.09	■
1.5 dCi		Diesel	FWD	1461	45	61	08.05-10.09	■
1.5 dCi		Diesel	FWD	1461	48	65	08.03-10.09	■
1.5 dCi 70		Diesel	FWD	1461	50	68	04.06-10.09	■
1.5 dCi		Diesel	FWD	1461	60	82	08.03-10.09	■
1.5 dCi 85		Diesel	FWD	1461	62	85	04.06-10.09	■

# LISTA DE APLICACIONES - BUYERS GUIDE

KUBISTAR (X76) 08.03-					Van (LCVs-N1 Segment)			
1.2 (D7F 764)		Gasolina	FWD	1149	44	60	08.03-	■
1.2 16V (D4F 712)		Gasolina	FWD	1149	55	75	04.06-	■
1.4 (K7J 700)		Gasolina	FWD	1390	55	75	08.03-10.09	■
1.6 16V (K4M 752)		Gasolina	FWD	1598	70	95	08.03-10.09	■
1.5 dCi (K9K 710)		Diesel	FWD	1461	42	57	08.03-10.09	■
1.5 dCi (K9K 714)		Diesel	FWD	1461	42	57	08.03-10.09	■
1.5 dCi (K9K 710)		Diesel	FWD	1461	45	61	08.05-10.09	■
1.5 dCi (K9K 714)		Diesel	FWD	1461	45	61	08.05-10.09	■
1.5 dCi (K9K 704)		Diesel	FWD	1461	48	65	08.03-	■
1.5 dCi 70 (K9K 700)		Diesel	FWD	1461	50	68	09.05-10.09	■
1.5 dCi 70 (K9K 716)		Diesel	FWD	1461	50	68	09.05-10.09	■
1.5 dCi (K9K 722)		Diesel	FWD	1461	60	82	08.03-10.09	■
dCi 85 (K9K 276)		Diesel	FWD	1461	62	84	04.06-10.09	■
dCi 85 (K9K 718)		Diesel	FWD	1461	62	84	04.06-10.09	■
RENAULT								
CLIO (B/C57_, 5/357_) 05.90-08.99					Hatchback (Supermini car-B Segment)			
1.8 16V (C57D) (F7P 722)		Gasolina	FWD	1764	99	135	01.91-03.96	■
Williams (B/C57M) (F7R 700)		Gasolina	FWD	1998	108	147	01.94-09.98	■
CLIO II (SB0/1/2_) 09.98-					Hatchback Van (LCVs-N1 Segment)			
1.2 (SB0A, SB0F, SB1K, SB2D) (D7F 720)	06/01-	Gasolina	FWD	1149	43	58	09.98-	■
1.2 (SB0A, SB0F, SB1K, SB2D) (D7F 726)	06/01-	Gasolina	FWD	1149	43	58	09.98-	■
1.2 (SB0A, SB0F, SB1K, SB2D) (D7F 746)	06/01-	Gasolina	FWD	1149	43	58	09.98-	■
1.2 (SB0A, SB0F, SB10) (D7F 722)	06/01-	Gasolina	FWD	1149	44	60	03.99-10.03	■
1.2 (SB0A, SB0F, SB10) (D7F 726)	06/01-	Gasolina	FWD	1149	44	60	03.99-10.03	■
1.2 (SB0A, SB0F, SB10) (D7F 746)	06/01-	Gasolina	FWD	1149	44	60	03.99-10.03	■
1.6 (SB0H) (K4M 746)		Gasolina	FWD	1598	79	107	11.03-	■
1.5 dCi (SB3M)		Diesel	FWD	1461	47	64	06.05-12.10	■
1.5 dCi (SB07) (K9K 700)		Diesel	FWD	1461	48	65	06.01-	■
1.5 dCi (SB07) (K9K 704)		Diesel	FWD	1461	48	65	06.01-	■
1.5 dCi (K9K 714)		Diesel	FWD	1461	50	68	04.04-	■
1.5 dCi (K9K 702)		Diesel	FWD	1461	59	80	06.01-10.04	■
1.5 dCi (K9K 702)		Diesel	FWD	1461	60	82	11.03-	■
1.5 dCi (K9K 710)		Diesel	FWD	1461	60	82	11.03-	■
1.5 dCi (K9K 716)		Diesel	FWD	1461	60	82	11.03-	■
1.9 D (SB0E) (F8Q 630)	06/01-	Diesel	FWD	1870	47	64	09.98-	■
1.9 DTi (SB0U) (F9Q 780)		Diesel	FWD	1870	59	80	02.00-05.01	■
CLIO II (BB_, CB_) 03.98-					Hatchback (Supermini car-B Segment)			
1.2 (BB0A, BB0F, BB10, BB1K, BB28, BB2D, BB2H, CB0A,... (D7F 710)	06/01-	Gasolina	FWD	1149	43	58	09.98-02.10	■
1.2 (BB0A, BB0F, BB10, BB1K, BB28, BB2D, BB2H, CB0A,... (D7F 720)	06/01-	Gasolina	FWD	1149	43	58	09.98-02.10	■
1.2 (BB0A, BB0F, BB10, BB1K, BB28, BB2D, BB2H, CB0A,... (D7F 722)	06/01-	Gasolina	FWD	1149	43	58	09.98-02.10	■
1.2 (BB0A, BB0F, BB10, BB1K, BB28, BB2D, BB2H, CB0A,... (D7F 726)	06/01-	Gasolina	FWD	1149	43	58	09.98-02.10	■
1.2 (BB0A, BB0F, BB10, BB1K, BB28, BB2D, BB2H, CB0A,... (D7F 746)	06/01-	Gasolina	FWD	1149	43	58	09.98-02.10	■
1.2 (BB0A, BB0F, BB10, BB1K, BB28, BB2D, BB2H, CB0A,... (D7F 764)	06/01-	Gasolina	FWD	1149	43	58	09.98-02.10	■
1.2 (BB0A, BB0F, BB10, BB1K, BB28, BB2D, BB2H, CB0A,... (D7F 766)	06/01-	Gasolina	FWD	1149	43	58	09.98-02.10	■
1.2		Gasolina	FWD	1149	55	75	06.01-	■

# LISTA DE APLICACIONES - BUYERS GUIDE

1.2 16V (BB05, BB0W, BB11, BB27, BB2T, BB2U, BB2V, CB05,... (D4F 706)		Gasolina	FWD	1149	55	75	06.01-08.16	■
1.2 16V (BB05, BB0W, BB11, BB27, BB2T, BB2U, BB2V, CB05,... (D4F 712)		Gasolina	FWD	1149	55	75	06.01-08.16	■
1.2 16V (BB05, BB0W, BB11, BB27, BB2T, BB2U, BB2V, CB05,... (D4F 714)		Gasolina	FWD	1149	55	75	06.01-08.16	■
1.2 16V (BB05, BB0W, BB11, BB27, BB2T, BB2U, BB2V, CB05,... (D4F 722)		Gasolina	FWD	1149	55	75	06.01-08.16	■
1.2 16V (BB05, BB0W, BB11, BB27, BB2T, BB2U, BB2V, CB05,... (D4F 728)		Gasolina	FWD	1149	55	75	06.01-08.16	■
1.4 (B/CB0C, B/CB0S) (E7J 634)	06/01-	Gasolina	FWD	1390	55	75	09.98-05.05	■
1.4 (B/CB0C, B/CB0S) (E7J 635)	06/01-	Gasolina	FWD	1390	55	75	09.98-05.05	■
1.4 (B/CB0C, B/CB0S) (E7J 780)	06/01-	Gasolina	FWD	1390	55	75	09.98-05.05	■
1.4 (B/CB0C, B/CB0S) (K7J 700)	06/01-	Gasolina	FWD	1390	55	75	09.98-05.05	■
1.4 16V (B/CB0P, BB13) (K4J 710)	05/01-, -05/01, vehicles with ABS	Gasolina	FWD	1390	72	98	02.00-07.08	■
1.4 16V (B/CB0P, BB13) (K4J 711)	05/01-, -05/01, vehicles with ABS	Gasolina	FWD	1390	72	98	02.00-07.08	■
1.4 16V (B/CB0P, BB13) (K4J 712)	05/01-, -05/01, vehicles with ABS	Gasolina	FWD	1390	72	98	02.00-07.08	■
1.4 16V (B/CB0P, BB13) (K4J 713)	05/01-, -05/01, vehicles with ABS	Gasolina	FWD	1390	72	98	02.00-07.08	■
1.4 16V (B/CB0P, BB13) (K4J 715)	05/01-, -05/01, vehicles with ABS	Gasolina	FWD	1390	72	98	02.00-07.08	■
1.6 (B/CB0D, BB00) (K7M 744)	06/01-	Gasolina	FWD	1598	66	90	09.98-05.05	■
1.6 (B/CB0D, BB00) (K7M 745)	06/01-	Gasolina	FWD	1598	66	90	09.98-05.05	■
1.6 (B/CB0D, BB00) (K7M 746)	06/01-	Gasolina	FWD	1598	66	90	09.98-05.05	■
1.6 16V (BB01, BB0H, BB0T, BB14, BB1D, BB1R, BB2KL, BB3G... (K4M 708)	06/01-	Gasolina	FWD	1598	79	107	09.98-04.05	■
1.6 16V (BB01, BB0H, BB0T, BB14, BB1D, BB1R, BB2KL, BB3G... (K4M 740)	06/01-	Gasolina	FWD	1598	79	107	09.98-04.05	■
1.6 16V (BB01, BB0H, BB0T, BB14, BB1D, BB1R, BB2KL, BB3G... (K4M 742)	06/01-	Gasolina	FWD	1598	79	107	09.98-04.05	■
1.6 16V (BB01, BB0H, BB0T, BB14, BB1D, BB1R, BB2KL, BB3G... (K4M 743)	06/01-	Gasolina	FWD	1598	79	107	09.98-04.05	■
1.6 16V (BB01, BB0H, BB0T, BB14, BB1D, BB1R, BB2KL, BB3G... (K4M 744)	06/01-	Gasolina	FWD	1598	79	107	09.98-04.05	■
1.6 16V (BB01, BB0H, BB0T, BB14, BB1D, BB1R, BB2KL, BB3G... (K4M 745)	06/01-	Gasolina	FWD	1598	79	107	09.98-04.05	■
1.6 16V (BB01, BB0H, BB0T, BB14, BB1D, BB1R, BB2KL, BB3G... (K4M 748)	06/01-	Gasolina	FWD	1598	79	107	09.98-04.05	■
1.6 (BB01, BB1J) (K4M 740)		Gasolina	FWD	1598	81	110	06.99-02.09	■
1.6 (BB01, BB1J) (K4M 748)		Gasolina	FWD	1598	81	110	06.99-02.09	■
1.6 16V		Gasolina	FWD	1598	82	112	03.99-12.08	■
1.2 LPG (D7F 764)		Gasol./Gas (LPG)	FWD	1149	43	58	09.98-06.09	■
1.2 LPG (D7F 766)		Gasol./Gas (LPG)	FWD	1149	43	58	09.98-06.09	■
1.6 Flex (K4M 740)		Gasol./Etanol	FWD	1598	81	110	05.00-12.06	■
1.6 Flex (K4M 748)		Gasol./Etanol	FWD	1598	81	110	05.00-12.06	■
1.6 Hi-Flex (CB0H) (K4M 748)		Gasol./Etanol	FWD	1598	86	117	01.05-02.10	■
1.5 dCi (K9K 704)		Diesel	FWD	1461	42	57	06.01-12.06	■
1.5 dCi (B/CB3M) (K9K 740)		Diesel	FWD	1461	47	64	06.05-12.10	■
1.5 dCi (B/CB07) (K9K 700)		Diesel	FWD	1461	48	65	06.01-07.09	■
1.5 dCi (B/CB07) (K9K 704)		Diesel	FWD	1461	48	65	06.01-07.09	■
1.5 dCi (B/C2J) (K9K 700)		Diesel	FWD	1461	50	68	08.04-12.12	■
1.5 dCi (B/C2J) (K9K 714)		Diesel	FWD	1461	50	68	08.04-12.12	■
1.5 dCi (B/CB03) (K9K 702)		Diesel	FWD	1461	59	80	06.01-10.03	■
1.5 dCi (B/CB08) (K9K 702)		Diesel	FWD	1461	60	82	06.01-04.05	■
1.5 dCi (BB3N, CB3N) (K9K 718)		Diesel	FWD	1461	62	84	02.07-06.09	■

# LISTA DE APLICACIONES - BUYERS GUIDE

1.5 dCi (K9K 712)		Diesel	FWD	1461	74	100	10.03-04.05	■
1.9 dTi (B/CB0U) (F9Q 780)		Diesel	FWD	1870	59	80	12.99-05.05	■
1.9 dTi (B/CB0U) (F9Q 782)		Diesel	FWD	1870	59	80	12.99-05.05	■
<b>KANGOO (KC0/1_) 08.97-</b>					<b>MPV (Mini MPV-M1 Segment)</b>			
1.0 RN		Gasolina	FWD	999	43	58	01.02-01.07	■
1.0 (D4D 700)		Gasolina	FWD	999	50	70	01.02-01.07	■
1.0 (D4D 720)		Gasolina	FWD	999	50	70	01.02-01.07	■
1.2 (KC0A, KC0K, KC0F, KC01) (D7F 710)	vehicles with ABS	Gasolina	FWD	1149	43	58	08.97-	■
1.2 (KC0A, KC0K, KC0F, KC01) (D7F 720)	vehicles with ABS	Gasolina	FWD	1149	43	58	08.97-	■
1.2 (KC0A, KC0K, KC0F, KC01) (D7F 722)	vehicles with ABS	Gasolina	FWD	1149	43	58	08.97-	■
1.2 (KC0A, KC0K, KC0F, KC01) (D7F 726)	vehicles with ABS	Gasolina	FWD	1149	43	58	08.97-	■
1.2 (KC0A, KC0K, KC0F, KC01) (D7F 744)	vehicles with ABS	Gasolina	FWD	1149	43	58	08.97-	■
1.2 (KC0A, KC0K, KC0F, KC01) (D7F 746)	vehicles with ABS	Gasolina	FWD	1149	43	58	08.97-	■
1.2 16V (KC05, KC06, KC03, KC0T, KC0W, KC1D) (D4F 712)	vehicles with ABS	Gasolina	FWD	1149	55	75	06.01-	■
1.2 16V (KC05, KC06, KC03, KC0T, KC0W, KC1D) (D4F 714)	vehicles with ABS	Gasolina	FWD	1149	55	75	06.01-	■
1.2 16V (KC05, KC06, KC03, KC0T, KC0W, KC1D) (D4F 716)	vehicles with ABS	Gasolina	FWD	1149	55	75	06.01-	■
1.2 16V (KC05, KC06, KC03, KC0T, KC0W, KC1D) (D4F 730)	vehicles with ABS	Gasolina	FWD	1149	55	75	06.01-	■
1.4 (KC0C, KC0H, KC0B, KC0M) (E7J 634)	vehicles with ABS	Gasolina	FWD	1390	55	75	08.97-	■
1.4 (KC0C, KC0H, KC0B, KC0M) (E7J 635)	vehicles with ABS	Gasolina	FWD	1390	55	75	08.97-	■
1.4 (KC0C, KC0H, KC0B, KC0M) (E7J 780)	vehicles with ABS	Gasolina	FWD	1390	55	75	08.97-	■
1.4 (KC0C, KC0H, KC0B, KC0M) (K7J 700)	vehicles with ABS	Gasolina	FWD	1390	55	75	08.97-	■
1.4 (KC0C, KC0H, KC0B, KC0M) (K7J 701)	vehicles with ABS	Gasolina	FWD	1390	55	75	08.97-	■
1.6 (KC00) (K7M 746)	vehicles with ABS	Gasolina	FWD	1598	66	90	09.99-06.01	■
1.6 16V (K4M 706)	vehicles with ABS	Gasolina	FWD	1598	70	95	06.01-	■
1.6 16V (K4M 730)	vehicles with ABS	Gasolina	FWD	1598	70	95	06.01-	■
1.6 16V (K4M 750)	vehicles with ABS	Gasolina	FWD	1598	70	95	06.01-	■
1.6 16V (K4M 752)	vehicles with ABS	Gasolina	FWD	1598	70	95	06.01-	■
1.6 16V (K4M 753)	vehicles with ABS	Gasolina	FWD	1598	70	95	06.01-	■
1.6 16V bivalent (K4M 850)	vehicles with ABS	Gasol./Gas (CNG)	FWD	1598	60	82	06.05-	■
Elect'road RE (5DC 700)		Eléctrico	FWD		22	30	01.02-12.04	■
1.5 dCi (K9K 704)	vehicles with ABS	Diesel	FWD	1461	42	57	07.03-	■
1.5 dCi (K9K 700)		Diesel	FWD	1461	45	61	04.05-06.10	■
1.5 dCi (K9K 702)		Diesel	FWD	1461	45	61	04.05-06.10	■
1.5 dCi (KC07) (K9K 700)	vehicles with ABS	Diesel	FWD	1461	48	65	12.01-	■
1.5 dCi (KC07) (K9K 704)	vehicles with ABS	Diesel	FWD	1461	48	65	12.01-	■
1.5 dCi (K9K 714)	vehicles with ABS	Diesel	FWD	1461	50	68	06.05-	■
1.5 dCi (KC08, KC09) (K9K 702)	vehicles with ABS	Diesel	FWD	1461	60	82	07.02-	■
1.5 dCi (KC08, KC09) (K9K 710)	vehicles with ABS	Diesel	FWD	1461	60	82	07.02-	■
1.5 dCi (K9K 718)	vehicles with ABS	Diesel	FWD	1461	62	84	06.05-	■
D 55 1.9 (KC0D) (F8Q 662)	vehicles with ABS	Diesel	FWD	1870	40	54	08.97-	■
D 65 1.9 (KC0E, KC02, KC0J, KC0N) (F8Q 630)	vehicles with ABS	Diesel	FWD	1870	47	64	08.97-06.01	■
D 65 1.9 (KC0E, KC02, KC0J, KC0N) (F8Q 632)	vehicles with ABS	Diesel	FWD	1870	47	64	08.97-06.01	■
1.9 RXED (F8Q 632)	vehicles with ABS	Diesel	FWD	1870	48	65	09.99-06.01	■
1.9 dTi (KC0U) (F9Q 780)	vehicles with ABS	Diesel	FWD	1870	59	80	02.00-	■
<b>KANGOO EXPRESS (FC0/1_) 08.97-</b>					<b>Box Body/MPV (LCVs-N1 Segment)</b>			
1.0	vehicles with ABS	Gasolina	FWD	998	40	54	07.03-	■
1.0 (D7D 700)		Gasolina	FWD	999	43	59	01.02-01.07	■

# LISTA DE APLICACIONES - BUYERS GUIDE

1.0 (D4D 700)		Gasolina	FWD	999	50	70	01.02-01.07	■
1.0 (D4D 720)		Gasolina	FWD	999	50	70	01.02-01.07	■
1.2 (FC01, FC0A, FC0F) (D7F 710)	vehicles with ABS	Gasolina	FWD	1149	43	58	08.97-	■
1.2 (FC01, FC0A, FC0F) (D7F 720)	vehicles with ABS	Gasolina	FWD	1149	43	58	08.97-	■
1.2 (FC01, FC0A, FC0F) (D7F 722)	vehicles with ABS	Gasolina	FWD	1149	43	58	08.97-	■
1.2 (FC01, FC0A, FC0F) (D7F 726)	vehicles with ABS	Gasolina	FWD	1149	43	58	08.97-	■
1.2 (FC01, FC0A, FC0F) (D7F 744)	vehicles with ABS	Gasolina	FWD	1149	43	58	08.97-	■
1.2 (FC01, FC0A, FC0F) (D7F 746)	vehicles with ABS	Gasolina	FWD	1149	43	58	08.97-	■
1.2 (FC1A) (D7F 710)	vehicles with ABS	Gasolina	FWD	1149	44	60	07.98-07.01	■
1.2 (FC1A) (D7F 722)	vehicles with ABS	Gasolina	FWD	1149	44	60	07.98-07.01	■
1.2 (FC1A) (D7F 744)	vehicles with ABS	Gasolina	FWD	1149	44	60	07.98-07.01	■
1.2 (FC1A) (D7F 764)	vehicles with ABS	Gasolina	FWD	1149	44	60	07.98-07.01	■
1.2 (FC1A) (D7F 766)	vehicles with ABS	Gasolina	FWD	1149	44	60	07.98-07.01	■
1.2 16V (FC05, FC0W, FC1D, FC1P, FC1K, FC0T) (D4F 712)	vehicles with ABS	Gasolina	FWD	1149	55	75	10.01-	■
1.2 16V (FC05, FC0W, FC1D, FC1P, FC1K, FC0T) (D4F 714)	vehicles with ABS	Gasolina	FWD	1149	55	75	10.01-	■
1.2 16V (FC05, FC0W, FC1D, FC1P, FC1K, FC0T) (D4F 730)	vehicles with ABS	Gasolina	FWD	1149	55	75	10.01-	■
1.4 (FC0C, FC0B, FC0H, FC0M) (E7J 634)	vehicles with ABS	Gasolina	FWD	1390	55	75	08.97-06.08	■
1.4 (FC0C, FC0B, FC0H, FC0M) (E7J 635)	vehicles with ABS	Gasolina	FWD	1390	55	75	08.97-06.08	■
1.4 (FC0C, FC0B, FC0H, FC0M) (E7J 780)	vehicles with ABS	Gasolina	FWD	1390	55	75	08.97-06.08	■
1.4 (FC0C, FC0B, FC0H, FC0M) (K7J 700)	vehicles with ABS	Gasolina	FWD	1390	55	75	08.97-06.08	■
1.4 (FC0C, FC0B, FC0H, FC0M) (K7J 701)	vehicles with ABS	Gasolina	FWD	1390	55	75	08.97-06.08	■
1.6 (K7M 746)		Gasolina	FWD	1598	66	90	09.99-06.01	■
1.6 16V (K4M 706)	vehicles with ABS	Gasolina	FWD	1598	70	95	10.01-	■
1.6 16V (K4M 752)	vehicles with ABS	Gasolina	FWD	1598	70	95	10.01-	■
1.2 BiFuel (D7F 710)		Gasol./Gas (LPG)	FWD	1149	43	58	07.98-07.01	■
1.2 BiFuel (D7F 744)		Gasol./Gas (LPG)	FWD	1149	43	58	07.98-07.01	■
1.6 16V bivalent (K4M 850)		Gasol./Gas (CNG)	FWD	1598	60	82	06.05-	■
1.6 Flex (FC1U, FC1Y, FC14, FC16, FC17) (K4M 850)		Gasol./Etanol	FWD	1598	72	98	03.07-12.18	■
1.5 dCi (FC1R) (K9K 704)	vehicles with ABS	Diesel	FWD	1461	42	57	12.02-	■
1.5 dCi (K9K 716)		Diesel	FWD	1461	45	61	10.05-	■
1.5 dCi (FC07, FC1R) (K9K 700)	vehicles with ABS	Diesel	FWD	1461	48	65	12.01-	■
1.5 dCi (FC07, FC1R) (K9K 702)	vehicles with ABS	Diesel	FWD	1461	48	65	12.01-	■
1.5 dCi (FC07, FC1R) (K9K 704)	vehicles with ABS	Diesel	FWD	1461	48	65	12.01-	■
1.5 dCi (FC1E) (K9K 714)	vehicles with ABS	Diesel	FWD	1461	50	68	06.05-	■
1.5 dCi (FC08, FC09) (K9K 702)	vehicles with ABS	Diesel	FWD	1461	60	82	04.03-	■
1.5 dCi (FC08, FC09) (K9K 710)	vehicles with ABS	Diesel	FWD	1461	60	82	04.03-	■
1.5 dCi (FC1G) (K9K 718)	vehicles with ABS	Diesel	FWD	1461	62	84	06.05-	■
D 55 1.9 (FC0D) (F8Q 662)	vehicles with ABS	Diesel	FWD	1870	40	54	08.97-	■
D 65 1.9 (FC0E, FC02, FC0J, FC0N) (F8Q 630)	vehicles with ABS	Diesel	FWD	1870	47	64	08.97-	■
D 65 1.9 (FC0E, FC02, FC0J, FC0N) (F8Q 632)	vehicles with ABS	Diesel	FWD	1870	47	64	08.97-	■
1.9 D (FC0J) (F8Q 632)	vehicles with ABS	Diesel	FWD	1870	48	65	09.99-06.03	■
1.9 dTi (FC0U) (F9Q 780)	vehicles with ABS	Diesel	FWD	1870	59	80	02.00-	■
1.9 dCi (FC0V) (F9Q 782)	vehicles with ABS	Diesel	FWD	1870	62	84	07.03-	■
1.9 dCi (FC0V) (F9Q 790)	vehicles with ABS	Diesel	FWD	1870	62	84	07.03-	■
<b>KANGOO II / GRAND KANGOO (KW0/1_) 02.08-</b>					<b>MPV (Mini MPV-M1 Segment)</b>			
1.5 dCi		Diesel	FWD	1461	48	65	01.09-	■
1.5 dCi 70 (KW0V, KW0A) (K9K 800)		Diesel	FWD	1461	50	68	02.08-	■

# LISTA DE APLICACIONES - BUYERS GUIDE

1.5 dCi 70 (KW0V, KW0A) (K9K 802)		Diesel	FWD	1461	50	68	02.08-	■
<b>LOGAN II MCV / TONDAR (K8_) 11.13-</b>					<b>Estate (Compact car-C Segment)</b>			
1.6 (K7M 812)		Gasolina	FWD	1598	59	80	12.13-	■
1.5 dCi (K9K 838)		Diesel	FWD	1461	62	84	12.13-	■
1.5 dCi		Diesel	FWD	1461	66	90	12.13-	■
<b>LOGAN / TONDAR 90 (KS_) 04.07-</b>					<b>Estate (Compact car-C Segment)</b>			
1.4 (K7J 710)		Gasolina	FWD	1390	55	75	10.07-	■
1.5 dCi		Diesel	FWD	1461	48	65	06.11-	■
1.5 dCi (K9K 792)	vehicles without ABS	Diesel	FWD	1461	50	68	04.07-	■
1.5 dCi (K9K 796)		Diesel	FWD	1461	63	86	02.08-06.15	■
1.5 dCi (KS04, KS1L)		Diesel	FWD	1461	66	90	06.11-06.15	■
<b>LOGAN / TONDAR 90 (LS_) 09.04-</b>					<b>Saloon (Compact car-C Segment)</b>			
1.4 (K7J 710)		Gasolina	FWD	1390	55	75	09.04-	■
1.6 (K7M 710)		Gasolina	FWD	1598	64	87	09.04-	■
1.6 Flex		Gasolina	FWD	1598	70	95	11.07-08.12	■
1.6		Gasolina	FWD	1598	74	101	09.14-	■
1.6 (LS0L, LS09, LS0V, LS0P, LS18, LS1S, LS1V, LS1Y,... (K4M 690)		Gasolina	FWD	1598	77	105	04.07-10.13	■
1.6 (LS0L, LS09, LS0V, LS0P, LS18, LS1S, LS1V, LS1Y,... (K4M 694)		Gasolina	FWD	1598	77	105	04.07-10.13	■
1.6 (LS0L, LS09, LS0V, LS0P, LS18, LS1S, LS1V, LS1Y,... (K4M 696)		Gasolina	FWD	1598	77	105	04.07-10.13	■
1.6 (LS0L, LS09, LS0V, LS0P, LS18, LS1S, LS1V, LS1Y,... (K4M 697)		Gasolina	FWD	1598	77	105	04.07-10.13	■
1.6 (LS0L, LS09, LS0V, LS0P, LS18, LS1S, LS1V, LS1Y,... (K4M 698)		Gasolina	FWD	1598	77	105	04.07-10.13	■
1.6 Flex		Gasolina	FWD	1598	82	112	07.07-	■
1.4 LPG (K7J 714)		Gasol./Gas (LPG)	FWD	1390	53	72	02.08-10.13	■
1.5 dCi (K9K 700)		Diesel	FWD	1461	48	65	04.06-10.13	■
1.5 dCi (K9K 790)		Diesel	FWD	1461	48	65	04.06-10.13	■
1.5 dCi (K9K 794)		Diesel	FWD	1461	48	65	04.06-10.13	■
1.5 dCi (K9K 792)		Diesel	FWD	1461	50	68	04.07-	■
1.5 dCi (K9K 796)		Diesel	FWD	1461	63	86	02.08-06.15	■
<b>LOGAN EXPRESS / TONDAR (US_) 04.07-</b>					<b>Estate Van (Compact car-C Segment)</b>			
1.6 (K7M 710)		Gasolina	FWD	1598	64	87	04.07-	■
1.5 dCi (K9K 792)		Diesel	FWD	1461	50	68	04.07-	■
<b>MEGANE (EA0/1_) 10.96-08.03</b>					<b>Convertible (Compact car-C Segment)</b>			
1.4 16V (EA0D, EA1H, EA0W, EA10) (K4J 714)	-10/00	Gasolina	FWD	1390	70	95	03.99-08.03	■
1.4 16V (EA0D, EA1H, EA0W, EA10) (K4J 750)	-10/00	Gasolina	FWD	1390	70	95	03.99-08.03	■
1.6 e (EA0F) (K7M 702)	10/98-	Gasolina	FWD	1598	66	90	10.96-03.99	■
1.6 e (EA0F) (K7M 703)	10/98-	Gasolina	FWD	1598	66	90	10.96-03.99	■
2.0 (EA0G) (F3R 750)	-05/99	Gasolina	FWD	1998	84	114	04.97-08.03	■
2.0 (EA0G) (F3R 798)	-05/99	Gasolina	FWD	1998	84	114	04.97-08.03	■
<b>MEGANE (BA0/1_) 08.95-12.04</b>					<b>Hatchback (Compact car-C Segment)</b>			
1.4 Eco (BA0T) (E7J 624)	10/98-	Gasolina	FWD	1390	52	71	01.96-03.99	■
1.4 e (BA0E, BA0V) (E7J 626)	10/98-	Gasolina	FWD	1390	55	75	01.96-08.03	■
1.4 e (BA0E, BA0V) (E7J 764)	10/98-	Gasolina	FWD	1390	55	75	01.96-08.03	■
1.4 16V (BA0D, BA1H, BA0W, BA10) (K4J 714)	-08/02	Gasolina	FWD	1390	70	95	03.99-08.03	■
1.4 16V (BA0D, BA1H, BA0W, BA10) (K4J 750)	-08/02	Gasolina	FWD	1390	70	95	03.99-08.03	■
1.6 i (BA0L) (K7M 720)	10/98-	Gasolina	FWD	1598	55	75	01.96-03.99	■
1.6		Gasolina	FWD	1598	64	87	02.00-09.00	■



# LISTA DE APLICACIONES - BUYERS GUIDE

1.6 e (BA0F, BA0S) (K7M 702)	10/98-	Gasolina	FWD	1598	66	90	01.96-03.99	■
1.6 e (BA0F, BA0S) (K7M 703)	10/98-	Gasolina	FWD	1598	66	90	01.96-03.99	■
1.6 e (BA0F, BA0S) (K7M 790)	10/98-	Gasolina	FWD	1598	66	90	01.96-03.99	■
1.6 16V (BA04, BA0B, BA11, BA1J, BA16, BA19, BA1K, BA1V,... (K4M 700)	vehicles without ABS	Gasolina	FWD	1598	79	107	03.99-08.02	■
1.6 16V (BA04, BA0B, BA11, BA1J, BA16, BA19, BA1K, BA1V,... (K4M 701)	vehicles without ABS	Gasolina	FWD	1598	79	107	03.99-08.02	■
1.6 16V (BA04, BA0B, BA11, BA1J, BA16, BA19, BA1K, BA1V,... (K4M 706)	vehicles without ABS	Gasolina	FWD	1598	79	107	03.99-08.02	■
1.6 16V (BA04, BA0B, BA11, BA1J, BA16, BA19, BA1K, BA1V,... (K4M 708)	vehicles without ABS	Gasolina	FWD	1598	79	107	03.99-08.02	■
1.6 16V (BA04, BA0B, BA11, BA1J, BA16, BA19, BA1K, BA1V,... (K4M 709)	vehicles without ABS	Gasolina	FWD	1598	79	107	03.99-08.02	■
1.6 16V	vehicles without ABS	Gasolina	FWD	1598	81	110	11.01-12.08	■
2.0 i (BA0G) (F3R 750)	-02/99	Gasolina	FWD	1998	84	114	01.96-08.03	■
2.0 i (BA0G) (F3R 751)	-02/99	Gasolina	FWD	1998	84	114	01.96-08.03	■
2.0 (F3R 750)		Gasolina	FWD	1998	85	115	05.98-05.01	■
2.0 (F3R 751)		Gasolina	FWD	1998	85	115	05.98-05.01	■
2.0 (F3R 791)		Gasolina	FWD	1998	85	115	05.98-05.01	■
2.0 (F3R 796)		Gasolina	FWD	1998	85	115	05.98-05.01	■
2.0 (F3R 797)		Gasolina	FWD	1998	85	115	05.98-05.01	■
2.0 (F3R 798)		Gasolina	FWD	1998	85	115	05.98-05.01	■
1.6 LPG (K7M 702)		Gasol./Gas (LPG)	FWD	1598	66	90	08.95-03.99	■
1.6 LPG (K4M 704)		Gasol./Gas (LPG)	FWD	1598	80	109	10.00-08.02	■
1.6 LPG (K4M 712)		Gasol./Gas (LPG)	FWD	1598	80	109	10.00-08.02	■
1.9 D Eco (BA0A, BA0U, BA0R) (F8Q 620)	10/98-	Diesel	FWD	1870	47	64	01.96-08.03	■
1.9 D Eco (BA0A, BA0U, BA0R) (F8Q 622)	10/98-	Diesel	FWD	1870	47	64	01.96-08.03	■
1.9 D Eco (BA0A, BA0U, BA0R) (F8Q 624)	10/98-	Diesel	FWD	1870	47	64	01.96-08.03	■
1.9 DTi (F9Q 730)		Diesel	FWD	1870	60	82	02.00-09.00	■
1.9 dT (B/SA0K, B/SA0Y) (F8Q 784)		Diesel	FWD	1870	66	90	01.96-08.03	■
1.9 dT (B/SA0K, B/SA0Y) (F8Q 786)		Diesel	FWD	1870	66	90	01.96-08.03	■
1.9 D (F8Q 784)		Diesel	FWD	1870	69	94	04.96-02.01	■
1.9 TDi (F8Q 784)		Diesel	FWD	1870	69	94	09.96-08.03	■
1.9 dTi (BA08, BA0N) (F9Q 730)	-04/99	Diesel	FWD	1870	72	98	03.97-02.01	■
1.9 dTi (BA08, BA0N) (F9Q 731)	-04/99	Diesel	FWD	1870	72	98	03.97-02.01	■
1.9 dTi (BA08, BA0N) (F9Q 734)	-04/99	Diesel	FWD	1870	72	98	03.97-02.01	■
1.9 dTi (BA08, BA0N) (F9Q 736)	-04/99	Diesel	FWD	1870	72	98	03.97-02.01	■
1.9 DT (F8Q 784)		Diesel	FWD	1870	76	104	08.98-10.99	■
1.9 dCi (F9Q 732)		Diesel	FWD	1870	77	105	03.99-08.03	■
1.9 dCi (F9Q 738)		Diesel	FWD	1870	77	105	03.99-08.03	■
<b>MEGANE Grandtour (KA0/1_) 03.99-08.03</b>					<b>Estate (Compact car-C Segment)</b>			
1.4 e (KA0V) (E7J 626)		Gasolina	FWD	1390	55	75	03.99-08.03	■
1.4 16V (KA0D, KA1H, KA0W, KA10) (K4J 714)		Gasolina	FWD	1390	70	95	03.99-08.03	■
1.4 16V (KA0D, KA1H, KA0W, KA10) (K4J 750)		Gasolina	FWD	1390	70	95	03.99-08.03	■
1.6 e (KA0F) (K7M 702)		Gasolina	FWD	1598	66	90	03.99-08.03	■
1.6 e (KA0F) (K7M 703)		Gasolina	FWD	1598	66	90	03.99-08.03	■
1.6 16V (KA0B, KA04, KA11) (K4M 700)		Gasolina	FWD	1598	79	107	03.99-08.03	■
1.6 16V (KA0B, KA04, KA11) (K4M 701)		Gasolina	FWD	1598	79	107	03.99-08.03	■
1.6 16V (KA0B, KA04, KA11) (K4M 708)		Gasolina	FWD	1598	79	107	03.99-08.03	■
1.6 16V (KA0B, KA04, KA11) (K4M 709)		Gasolina	FWD	1598	79	107	03.99-08.03	■
1.6 BiFuel	vehicles without ABS	Gasolina	FWD	1598	79	107	04.01-07.03	■
1.9 D (KA0J, KA0R) (F8Q 622)		Diesel	FWD	1870	47	64	04.99-08.03	■

# LISTA DE APLICACIONES - BUYERS GUIDE

1.9 D (KA0J, KA0R) (F8Q 790)		Diesel	FWD	1870	47	64	04.99-08.03	■
<b>MEGANE Classic (LA0/1_) 09.96-08.08</b>					<b>Saloon (Compact car-C Segment)</b>			
1.4 (LA0E, LA0V) (E7J 626)	10/98-, -05/99	Gasolina	FWD	1390	55	75	09.96-08.03	■
1.4 (LA0E, LA0V) (E7J 764)	10/98-, -05/99	Gasolina	FWD	1390	55	75	09.96-08.03	■
1.4 16V (LA0D, LA1H, IA0W, LA10) (K4J 714)	-09/02	Gasolina	FWD	1390	70	95	03.99-08.03	■
1.4 16V (LA0D, LA1H, IA0W, LA10) (K4J 750)	-09/02	Gasolina	FWD	1390	70	95	03.99-08.03	■
1.6 i (LA0L) (K7M 720)		Gasolina	FWD	1598	55	75	09.96-03.99	■
1.6 (K7M 704)		Gasolina	FWD	1598	64	87	02.00-09.00	■
1.6 e (LA0F, LA0S) (K7M 702)	10/98-	Gasolina	FWD	1598	66	90	09.96-03.99	■
1.6 e (LA0F, LA0S) (K7M 703)	10/98-	Gasolina	FWD	1598	66	90	09.96-03.99	■
1.6 e (LA0F, LA0S) (K7M 790)	10/98-	Gasolina	FWD	1598	66	90	09.96-03.99	■
1.6 16V (K4M 706)		Gasolina	FWD	1598	73	99	01.99-08.08	■
1.6 16V (LA00, LA04, LA0B, LA11, LA16, LA19, LA1J, LA1K,... (K4M 700)	-09/02, vehicles without ABS	Gasolina	FWD	1598	79	107	03.99-07.03	■
1.6 16V (LA00, LA04, LA0B, LA11, LA16, LA19, LA1J, LA1K,... (K4M 701)	-09/02, vehicles without ABS	Gasolina	FWD	1598	79	107	03.99-07.03	■
1.6 16V (LA00, LA04, LA0B, LA11, LA16, LA19, LA1J, LA1K,... (K4M 706)	-09/02, vehicles without ABS	Gasolina	FWD	1598	79	107	03.99-07.03	■
1.6 16V (LA00, LA04, LA0B, LA11, LA16, LA19, LA1J, LA1K,... (K4M 708)	-09/02, vehicles without ABS	Gasolina	FWD	1598	79	107	03.99-07.03	■
1.6 16V (LA00, LA04, LA0B, LA11, LA16, LA19, LA1J, LA1K,... (K4M 709)	-09/02, vehicles without ABS	Gasolina	FWD	1598	79	107	03.99-07.03	■
1.6 16V	vehicles without ABS	Gasolina	FWD	1598	81	110	09.99-12.01	■
2.0 i (LA07, LA0G) (F3R 750)	-05/99	Gasolina	FWD	1998	84	114	09.96-08.03	■
2.0 i (LA07, LA0G) (F3R 751)	-05/99	Gasolina	FWD	1998	84	114	09.96-08.03	■
2.0 i (LA07, LA0G) (F3R 752)	-05/99	Gasolina	FWD	1998	84	114	09.96-08.03	■
2.0 i (LA07, LA0G) (F3R 791)	-05/99	Gasolina	FWD	1998	84	114	09.96-08.03	■
2.0 i (LA07, LA0G) (F3R 796)	-05/99	Gasolina	FWD	1998	84	114	09.96-08.03	■
2.0 i (LA07, LA0G) (F3R 797)	-05/99	Gasolina	FWD	1998	84	114	09.96-08.03	■
2.0 i (LA07, LA0G) (F3R 798)	-05/99	Gasolina	FWD	1998	84	114	09.96-08.03	■
2.0 (F3R 750)		Gasolina	FWD	1998	85	115	05.98-05.01	■
2.0 (F3R 752)		Gasolina	FWD	1998	85	115	05.98-05.01	■
2.0 (F3R 791)		Gasolina	FWD	1998	85	115	05.98-05.01	■
2.0 (F3R 796)		Gasolina	FWD	1998	85	115	05.98-05.01	■
2.0 (F3R 797)		Gasolina	FWD	1998	85	115	05.98-05.01	■
2.0 (F3R 798)		Gasolina	FWD	1998	85	115	05.98-05.01	■
2.0 RT		Gasolina	FWD	1998	112	152	10.96-02.99	■
1.9 D (LA0A, LA0U, LA0R) (F8Q 620)	10/98-	Diesel	FWD	1870	47	64	09.96-08.03	■
1.9 D (LA0A, LA0U, LA0R) (F8Q 622)	10/98-	Diesel	FWD	1870	47	64	09.96-08.03	■
1.9 D (LA0A, LA0U, LA0R) (F8Q 624)	10/98-	Diesel	FWD	1870	47	64	09.96-08.03	■
1.9 dT (LA0K, LA0Y) (F8Q 784)		Diesel	FWD	1870	66	90	09.96-08.03	■
1.9 dT (LA0K, LA0Y) (F8Q 786)		Diesel	FWD	1870	66	90	09.96-08.03	■
1.9 TDI (F8Q 784)	-02/99	Diesel	FWD	1870	69	94	09.96-08.03	■
1.9 dTi (LA08, LA0N, LA0K) (F9Q 730)	-03/99	Diesel	FWD	1870	72	98	03.97-02.01	■
1.9 dTi (LA08, LA0N, LA0K) (F9Q 731)	-03/99	Diesel	FWD	1870	72	98	03.97-02.01	■
1.9 dTi (LA08, LA0N, LA0K) (F9Q 734)	-03/99	Diesel	FWD	1870	72	98	03.97-02.01	■
1.9 dTi (LA08, LA0N, LA0K) (F9Q 736)	-03/99	Diesel	FWD	1870	72	98	03.97-02.01	■
1.9 DT (F8Q 784)		Diesel	FWD	1870	76	104	08.98-10.99	■
1.9 dCi (LA05) (F9Q 732)		Diesel	FWD	1870	77	105	03.99-07.03	■
1.9 dCi (LA05) (F9Q 733)		Diesel	FWD	1870	77	105	03.99-07.03	■
<b>MEGANE Coach (DA0/1_) 03.96-08.03</b>					<b>Coupe (Compact car-C Segment)</b>			
1.4 16V (DA0D, DA1H, DA0W, DA10) (K4J 700)	-09/00	Gasolina	FWD	1390	70	95	03.99-07.03	■
1.4 16V (DA0D, DA1H, DA0W, DA10) (K4J 714)	-09/00	Gasolina	FWD	1390	70	95	03.99-07.03	■

# LISTA DE APLICACIONES - BUYERS GUIDE

1.4 16V (DA0D, DA1H, DA0W, DA10) (K4J 750)	-09/00	Gasolina	FWD	1390	70	95	03.99-07.03	■
1.6 e (DA0F) (K7M 702)	11/97-	Gasolina	FWD	1598	66	90	03.96-03.99	■
1.6 e (DA0F) (K7M 703)	11/97-	Gasolina	FWD	1598	66	90	03.96-03.99	■
2.0 i (DA0G) (F3R 750)	-05/99	Gasolina	FWD	1998	84	114	03.96-08.03	■
2.0 i (DA0G) (F3R 751)	-05/99	Gasolina	FWD	1998	84	114	03.96-08.03	■
2.0 i (DA0G) (F3R 798)	-05/99	Gasolina	FWD	1998	84	114	03.96-08.03	■
1.9 dTi (DA0N) (F9Q 731)	04/99-	Diesel	FWD	1870	72	98	03.97-02.01	■
1.9 dTi (DA0N) (F9Q 734)	04/99-	Diesel	FWD	1870	72	98	03.97-02.01	■
1.9 dTi (DA0N) (F9Q 736)	04/99-	Diesel	FWD	1870	72	98	03.97-02.01	■
<b>MEGANE Hatchback Van (SA0/1_) 08.95-07.03</b>					<b>Hatchback Van (Compact car-C Segment)</b>			
1.9 (SA0U, SA0R, SA0A) (F8Q 620)	10/98-	Diesel	FWD	1870	47	64	08.95-09.00	■
1.9 (SA0U, SA0R, SA0A) (F8Q 622)	10/98-	Diesel	FWD	1870	47	64	08.95-09.00	■
1.9 (SA0U, SA0R, SA0A) (F8Q 624)	10/98-	Diesel	FWD	1870	47	64	08.95-09.00	■
1.9 dCi (F9Q 738)		Diesel	FWD	1870	59	80	10.00-07.03	■
<b>MEGANE Kombi van (KA_) 02.00-07.03</b>					<b>Estate Van (Compact car-C Segment)</b>			
1.4 (KA0D) (K4J 714)		Gasolina	FWD	1390	70	95	04.01-07.03	■
1.4 (KA0D) (K4J 750)		Gasolina	FWD	1390	70	95	04.01-07.03	■
1.6 (KA0B, KA04) (K4M 700)	vehicles without ABS	Gasolina	FWD	1598	79	107	04.01-07.03	■
1.6 (KA0B, KA04) (K4M 701)	vehicles without ABS	Gasolina	FWD	1598	79	107	04.01-07.03	■
1.6 (KA0B, KA04) (K4M 708)	vehicles without ABS	Gasolina	FWD	1598	79	107	04.01-07.03	■
1.6 (KA0B, KA04) (K4M 709)	vehicles without ABS	Gasolina	FWD	1598	79	107	04.01-07.03	■
1.6 BiFuel (KA0B) (K4M 712)	vehicles without ABS	Gasol./Gas (LPG)	FWD	1598	79	107	04.01-07.03	■
1.6 BiFuel (KA04) (K4M 704)	vehicles without ABS	Gasol./Gas (LPG)	FWD	1598	80	109	04.01-07.03	■
1.9 D (KA0R) (F8Q 622)		Diesel	FWD	1870	47	64	02.00-09.00	■
1.9 dTi (KA1U) (F9Q 744)		Diesel	FWD	1870	59	80	04.01-07.03	■
<b>MEGANE Scenic (JA0/1_) 10.96-12.01</b>					<b>MPV (Compact MPV-M1 Segment)</b>			
1.4 i (JA0E) (E7J 764)	-09/98	Gasolina	FWD	1390	55	75	01.97-09.99	■
1.6 i (JA0L) (K7M 720)	-09/98, Manual Transmission	Gasolina	FWD	1598	55	75	01.97-09.99	■
1.6 e (JA0F) (K7M 702)	-09/98, Manual Transmission	Gasolina	FWD	1598	66	90	10.96-10.99	■
1.6 e (JA0F) (K7M 703)	-09/98, Manual Transmission	Gasolina	FWD	1598	66	90	10.96-10.99	■
<b>R 19 (B/C53_) 01.88-09.94</b>					<b>Hatchback (Compact car-C Segment)</b>			
1.7 (B/C53C) (F3N 742)	vehicles with ABS	Gasolina	FWD	1721	66	90	09.88-04.92	■
1.7 (B/C53C) (F3N 743)	vehicles with ABS	Gasolina	FWD	1721	66	90	09.88-04.92	■
1.7 (F3N 746)	vehicles with ABS	Gasolina	FWD	1721	79	107	06.89-04.92	■
1.8 16V (B/C53D) (F7P 704)		Gasolina	FWD	1764	99	135	06.89-04.92	■
1.8 16V (F7P 700)		Gasolina	FWD	1764	101	137	06.89-04.92	■
<b>R 19 (L53_) 01.88-12.92</b>					<b>Saloon (Compact car-C Segment)</b>			
1.7 (L53C) (F3N 742)	Automatic Transmiss.	Gasolina	FWD	1721	66	90	07.88-04.92	■
1.7 (L53C) (F3N 743)	Automatic Transmiss.	Gasolina	FWD	1721	66	90	07.88-04.92	■
1.7 (L533) (F2N 720)	Automatic Transmiss.	Gasolina	FWD	1721	68	92	09.88-12.92	■
1.7 (L533) (F2N 721)	Automatic Transmiss.	Gasolina	FWD	1721	68	92	09.88-12.92	■
1.7 (L53F) (F3N 746)		Gasolina	FWD	1721	79	107	08.88-12.92	■
1.8 16V (L53D) (F7P 704)		Gasolina	FWD	1764	99	135	10.89-04.92	■
1.8 16V (F7P 700)		Gasolina	FWD	1764	101	137	06.89-08.90	■
<b>R 19 II (D53_) 07.91-04.92</b>					<b>Convertible (Compact car-C Segment)</b>			
1.8 16V (D53D) (F7P 704)		Gasolina	FWD	1764	99	135	04.92-06.96	■
1.8 16V (D53D) (F7P 700)		Gasolina	FWD	1764	101	137	07.91-04.92	■

# LISTA DE APLICACIONES - BUYERS GUIDE

1.8 16V (D53D) (F7P 704)		Gasolina	FWD	1764	101	137	07.91-04.92	■
1.8 16V (D53D) (F7P 704)		Gasolina	FWD	1764	101	137	05.92-04.94	■
1.8 (853A) (F3P 706)		Gasolina	FWD	1794	66	90	09.93-06.96	■
1.8 (853A) (F3P 760)		Gasolina	FWD	1794	66	90	09.93-06.96	■
1.8 (D53Y) (F3P 706)		Gasolina	FWD	1794	69	94	04.92-01.96	■
1.8 (D53Y) (F3P 707)		Gasolina	FWD	1794	69	94	04.92-01.96	■
1.8		Gasolina	FWD	1794	86	117	01.95-06.01	■
<b>R 19 II (B/C53_) 01.91-06.01</b>					<b>Hatchback (Compact car-C Segment)</b>			
1.7 (B/C53B) (F3N 740)		Gasolina	FWD	1721	54	73	04.92-12.95	■
1.7 (B/C53B) (F3N 741)		Gasolina	FWD	1721	54	73	04.92-12.95	■
1.7 (B/C53C) (F3N 743)		Gasolina	FWD	1721	66	90	04.92-12.95	■
1.7 (F3N 746)		Gasolina	FWD	1721	79	107	05.92-09.94	■
1.8 16V (B/C53D) (F7P 704)		Gasolina	FWD	1764	99	135	04.92-12.95	■
1.8 16V (F7P 702)		Gasolina	FWD	1764	104	141	10.96-06.01	■
1.8 (B/C53Y) (F3P 706)		Gasolina	FWD	1794	65	88	04.92-12.95	■
1.8 (B/C53Y) (F3P 707)		Gasolina	FWD	1794	65	88	04.92-12.95	■
1.8 (B/C53Y) (F3P 708)		Gasolina	FWD	1794	65	88	04.92-12.95	■
1.8 (B/C53Y) (F3P 760)		Gasolina	FWD	1794	65	88	04.92-12.95	■
1.8 (5/353A) (F3P 706)		Gasolina	FWD	1794	66	90	04.92-12.95	■
1.8 (5/353A) (F3P 760)		Gasolina	FWD	1794	66	90	04.92-12.95	■
1.8 (5/353F, B/C538) (F3P 682)		Gasolina	FWD	1794	79	107	05.94-12.95	■
1.8 (5/353F, B/C538) (F3P 765)		Gasolina	FWD	1794	79	107	05.94-12.95	■
1.8 (B/C538) (F3P 700)		Gasolina	FWD	1794	81	110	04.92-05.94	■
1.9 dT (B/C53T) (F8Q 744)	02/95-	Diesel	FWD	1870	66	90	04.92-12.95	■
<b>R 19 II CHAMADE (L53_) 04.92-08.03</b>					<b>Saloon (Compact car-C Segment)</b>			
1.6 (K7M 703)		Gasolina	FWD	1598	66	90	10.96-06.01	■
1.7 (L533) (F2N 720)		Gasolina	FWD	1721	68	92	01.93-08.95	■
1.7 (L533) (F2N 721)		Gasolina	FWD	1721	68	92	01.93-08.95	■
1.8 16V (L53D) (F7P 704)		Gasolina	FWD	1764	99	135	04.92-12.95	■
1.8 (L53Y) (F3P 704)		Gasolina	FWD	1794	65	88	04.92-12.95	■
1.8 (L53Y) (F3P 705)		Gasolina	FWD	1794	65	88	04.92-12.95	■
1.8 (L53Y) (F3P 706)		Gasolina	FWD	1794	65	88	04.92-12.95	■
1.8 (L53Y) (F3P 707)		Gasolina	FWD	1794	65	88	04.92-12.95	■
1.8 (L53Y) (F3P 708)		Gasolina	FWD	1794	65	88	04.92-12.95	■
1.8 (L53Y) (F3P 760)		Gasolina	FWD	1794	65	88	04.92-12.95	■
1.8 (453A/F) (F3P 706)		Gasolina	FWD	1794	66	90	04.92-12.95	■
1.8 (453A/F) (F3P 760)		Gasolina	FWD	1794	66	90	04.92-12.95	■
1.8 (F3P 765)		Gasolina	FWD	1794	67	91	05.92-09.94	■
1.8 (F3P 700)		Gasolina	FWD	1794	79	107	05.92-11.95	■
1.8 (F3P 706)		Gasolina	FWD	1794	79	107	05.92-11.95	■
1.8 (L53V, L538) (F3P 682)		Gasolina	FWD	1794	79	107	05.94-12.95	■
1.8 (L538) (F3P 700)		Gasolina	FWD	1794	81	110	04.92-05.94	■
1.9 dT (L53T) (F8Q 744)	02/95-	Diesel	FWD	1870	66	90	04.92-12.95	■
1.9 D (F8Q 740)	02/95-	Diesel	FWD	1870	68	92	05.92-11.95	■
1.9 D (F8Q 744)	02/95-	Diesel	FWD	1870	68	92	05.92-11.95	■
<b>SANDERO/STEPWAY (BS_) 11.07-</b>					<b>Hatchback (Compact car-C Segment)</b>			
1.4 (K7J 710)		Gasolina	FWD	1390	55	75	02.09-	■
1.6 (K7M 718)		Gasolina	FWD	1598	62	84	11.10-	■
1.6 (BS0H, BS0F) (K7M 710)		Gasolina	FWD	1598	64	87	02.09-	■
1.6		Gasolina	FWD	1598	66	90	05.09-	■

# LISTA DE APLICACIONES - BUYERS GUIDE

1.6 (K7M 710)		Gasolina	FWD	1598	75	102	12.07-	■
1.6 (K4M 697)		Gasolina	FWD	1598	76	103	12.07-07.13	■
1.6 (K4M 690)		Gasolina	FWD	1598	77	105	12.12-	■
1.6 (BS0V, BS1V)		Gasolina	FWD	1598	82	112	09.09-	■
1.4 LPG (K7J 714)		Gasol./Gas (LPG)	FWD	1390	53	72	02.09-	■
1.6 Flex		Gasol./Etanol	FWD	1598	77	105	12.12-	■
1.6 Flex (BS0V, BS1V, BS09)		Gasol./Etanol	FWD	1598	82	112	08.08-	■
<b>THALIA II / SYMBOL (LU_) 09.08-</b>					<b>Saloon (Supermini car-B Segment)</b>			
1.4 (K4J 712)		Gasolina	FWD	1390	72	98	01.09-12.11	■
1.6 16V (K4M 743)		Gasolina	FWD	1598	77	105	09.08-	■
1.6 16V (LU1A, LU1B, LU1D, LU2M) (K4M 744)		Gasolina	FWD	1598	79	107	01.09-	■
1.6 16V (LU1A, LU1B, LU1D, LU2M) (K4M 745)		Gasolina	FWD	1598	79	107	01.09-	■
<b>THALIA / SYMBOL (LB_) 02.98-</b>					<b>Saloon (Supermini car-B Segment)</b>			
1.2 16V (D4F 706)		Gasolina	FWD	1149	55	75	04.02-	■
1.2 16V (D4F 712)		Gasolina	FWD	1149	55	75	04.02-	■
1.2 16V (D4F 728)		Gasolina	FWD	1149	55	75	04.02-	■
1.4 16V (K4J 712)		Gasolina	FWD	1390	72	98	08.00-	■
1.6 (K7M 746)		Gasolina	FWD	1598	66	90	03.98-	■
1.6 16V (K4M 740)		Gasolina	FWD	1598	79	107	07.00-02.09	■
1.6 Flex		Gasolina	FWD	1598	81	110	11.04-02.09	■
1.6 (K4M 736)		Gasolina	FWD	1598	82	112	01.04-12.08	■
1.6 Authentique Hi-Flex (LB26, LB3E) (K4M 742)		Gasol./Etanol	FWD	1598	86	115	11.04-02.09	■
1.6 Authentique Hi-Flex (LB26, LB3E) (K4M 743)		Gasol./Etanol	FWD	1598	86	115	11.04-02.09	■
1.5 dCi (K9K 740)		Diesel	FWD	1461	47	64	06.05-	■
1.5 dCi (K9K 700)		Diesel	FWD	1461	48	65	04.02-	■
1.5 dCi (K9K 700)		Diesel	FWD	1461	50	68	02.03-	■
1.5 dCi (K9K 714)		Diesel	FWD	1461	50	68	02.03-	■
1.5 dCi (K9K 706)		Diesel	FWD	1461	58	79	04.04-11.09	■
1.9 D (F8Q 630)		Diesel	FWD	1870	48	65	02.98-05.01	■
<b>TWINGO (S06_) 03.93-06.12</b>					<b>Hatchback Van (LCVs-N1 Segment)</b>			
1.2 (S066, S068) (D7F 700)	09/00-	Gasolina	FWD	1149	43	58	05.96-08.04	■
1.2 (S066, S068) (D7F 701)	09/00-	Gasolina	FWD	1149	43	58	05.96-08.04	■
1.2 (S066, S068) (D7F 702)	09/00-	Gasolina	FWD	1149	43	58	05.96-08.04	■
1.2 (S066, S068) (D7F 703)	09/00-	Gasolina	FWD	1149	43	58	05.96-08.04	■
1.2 (S066, S068) (D7F 704)	09/00-	Gasolina	FWD	1149	43	58	05.96-08.04	■
1.2 (S066, S068) (D7F 706)	09/00-	Gasolina	FWD	1149	43	58	05.96-08.04	■
1.2	09/00-	Gasolina	FWD	1149	44	60	03.97-08.03	■
<b>TWINGO (C06_) 03.93-10.12</b>					<b>Hatchback (City car-A Segment)</b>			
1.2 (C067) (D7F 700)	09/00-	Gasolina	FWD	1149	40	54	05.96-03.07	■
1.2 (C067) (D7F 701)	09/00-	Gasolina	FWD	1149	40	54	05.96-03.07	■
1.2 (C066, C068) (D7F 700)	09/00-	Gasolina	FWD	1149	43	58	05.96-06.07	■
1.2 (C066, C068) (D7F 701)	09/00-	Gasolina	FWD	1149	43	58	05.96-06.07	■
1.2 (C066, C068) (D7F 702)	09/00-	Gasolina	FWD	1149	43	58	05.96-06.07	■
1.2 (C066, C068) (D7F 703)	09/00-	Gasolina	FWD	1149	43	58	05.96-06.07	■
1.2 (C066, C068) (D7F 704)	09/00-	Gasolina	FWD	1149	43	58	05.96-06.07	■
1.2 16V (C060) (D4F 708)		Gasolina	FWD	1149	44	60	08.04-06.07	■
1.2 16V (C06C, C06D, C06K) (D4F 702)		Gasolina	FWD	1149	55	75	01.01-06.07	■

# LISTA DE APLICACIONES - BUYERS GUIDE

1.2 LPG (D7F 702)		Gasol./Gas (LPG)	FWD	1149	44	60	10.03-06.07	■
1.2 LPG (D7F 708)		Gasol./Gas (LPG)	FWD	1149	44	60	10.03-06.07	■
<b>TWINGO II (CNO_) 09.10-09.14</b>					<b>Hatchback Van (City car-A Segment)</b>			
1.2 (CN01, CN06) (D4F 770)		Gasolina	FWD	1149	55	75	09.10-09.14	■
1.5 dCi (CN03) (K9K 820)		Diesel	FWD	1461	55	75	10.10-09.14	■
<b>TWINGO II (CN0_) 03.07-</b>					<b>Hatchback (City car-A Segment)</b>			
1.2 (CN0D) (D7F 800)		Gasolina	FWD	1149	43	58	03.07-09.14	■
1.2 16V (D4F 764)		Gasolina	RWD	1149	55	75	03.08-	■
1.2 16V (CN04, CN0B) (D4F 764)		Gasolina	FWD	1149	55	75	03.07-09.14	■
1.2 16V (CN04, CN0B) (D4F 770)		Gasolina	FWD	1149	55	75	03.07-09.14	■
1.2 16V (CN04, CN0B) (D4F 772)		Gasolina	FWD	1149	55	75	03.07-09.14	■
1.2 16V (CN0K, CN0V, CN0A) (D4F 772)	08/07-	Gasolina	FWD	1149	56	76	03.07-	■
1.2 Turbo (CN0C, CN0F) (D4F 780)	08/07-	Gasolina	FWD	1149	74	100	03.07-09.14	■
1.2 Turbo (CN0C, CN0F) (D4F 782)	08/07-	Gasolina	FWD	1149	74	100	03.07-09.14	■
1.2 TCe 100 (CN0P) (D4F 780)		Gasolina	FWD	1149	75	102	02.11-	■
1.2 TCe 100 (CN0P) (D4F 782)		Gasolina	FWD	1149	75	102	02.11-	■
1.5 dCi (CN0E) (K9K 740)	08/07-	Diesel	FWD	1461	47	64	03.07-09.14	■
1.5 dCi 75 (K9K 820)		Diesel	FWD	1461	55	75	10.10-	■
1.5 dCi (CN0U) (K9K 718)		Diesel	FWD	1461	62	84	04.08-09.14	■
1.5 dCi 90 (K9K 820)		Diesel	FWD	1461	63	86	10.10-	■