

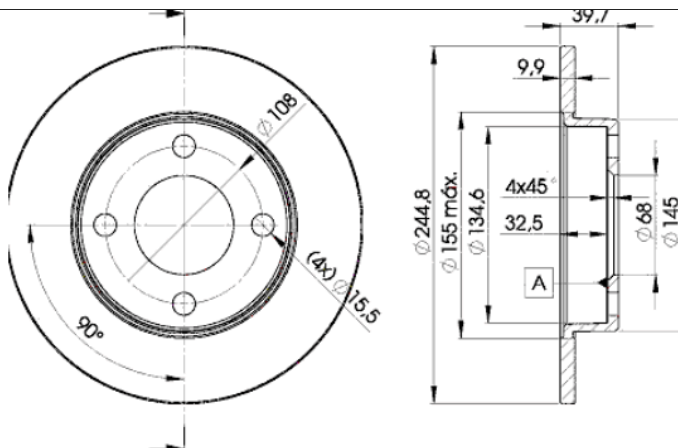
LISTA DE APLICACIONES - BUYERS GUIDE

78BD3636-2



Weight: 6.750

O.E.M.	MAKE
853 615 601	VW
8A0 615 601	VW



78BD3636-2

E1 90R-02C0100/0095



Ø245x10x39.7

MAKE

AUDI



Trac.	CC	Kw	CV
-------	----	----	----



Front / Rear

AUDI

80 III B2 / 4000 (811, 813, 814, 819, 853) 08.78-03.87

Saloon (Compact executive car-D Segment)

1.8 CC quattro (85Q) (JV)	Gasolina	4WD	1781	66	90	08.84-08.86	■
1.8 CC quattro (85Q) (NE)	Gasolina	4WD	1781	66	90	08.84-08.86	■
1.8 CC quattro (85Q) (JN)	Gasolina	4WD	1781	68	93	08.85-08.86	■
1.8 GTE quattro (85Q) (PV)	Gasolina	4WD	1781	81	110	03.85-08.86	■
1.8 GTE quattro (85Q) (DZ)	Gasolina	4WD	1781	82	112	08.84-08.86	■
2.0 quattro (85Q) (JS)	Gasolina	4WD	1994	85	115	10.83-09.84	■
2.2 quattro (KL)	Gasolina	4WD	2144	96	131	08.82-07.84	■
2.2 quattro (85Q) (KK)	Gasolina	4WD	2144	100	136	08.82-07.84	■
2.2 quattro (HY)	Gasolina	4WD	2226	100	136	08.82-07.84	■

80 IV B3 / 90 (893, 894, 8A2) 06.86-10.91

Saloon (Compact executive car-D Segment)

1.8 S quattro (SF)	Gasolina	4WD	1781	65	88	09.86-07.90	■
1.8 S quattro (JN)	Gasolina	4WD	1781	66	90	09.86-09.91	■
1.8 S quattro (NE)	Gasolina	4WD	1781	66	90	09.86-09.91	■
1.8 S quattro (PM)	Gasolina	4WD	1781	66	90	09.86-09.91	■
1.8 E quattro (DZ)	Gasolina	4WD	1781	82	112	09.86-08.91	■
1.8 quattro (SD)	Gasolina	4WD	1847	83	113	09.86-	■
2.0 E quattro (3A)	Gasolina	4WD	1984	83	113	08.88-09.90	■
2.3 quattro (NG)	Gasolina	4WD	2309	98	133	10.87-07.89	■

80 V B4 / 90 (8C2) 09.91-07.95

Saloon (Compact executive car-D Segment)

2.0 quattro (ADW)	Gasolina	4WD	1984	79	107	11.93-07.94	■
2.3 E quattro (NG)	Gasolina	4WD	2309	98	133	09.91-12.94	■
2.6 quattro (ABC)	Gasolina	4WD	2598	110	150	06.92-12.94	■

LISTA DE APLICACIONES - BUYERS GUIDE

2.8 quattro (AAH)		Gasolina	4WD	2771	128	174	09.91-12.94	■
2.8 quattro (AFC)		Gasolina	4WD	2771	128	174	09.91-12.94	■
80 V B4 Avant / 90 (8C5) 09.91-01.96					Estate (Compact executive car-D Segment)			
2.6		Gasolina	FWD	2598	102	139	08.94-01.96	■
2.6 quattro (ABC)		Gasolina	4WD	2598	110	150	07.92-07.95	■
2.8 quattro (AAH)		Gasolina	4WD	2771	128	174	08.92-07.95	■
90 II B3 (893, 894, 8A2) 04.87-09.91					Saloon (Compact executive car-D Segment)			
2.0 quattro (6A)		Gasolina	4WD	1984	101	137	08.89-07.90	■
2.0 20V Quattro (NM)		Gasolina	4WD	1994	118	160	08.88-09.91	■
2.2 E quattro (KV)		Gasolina	4WD	2226	100	136	04.87-09.91	■
2.3 E quattro (NG)		Gasolina	4WD	2309	98	133	04.87-09.91	■
2.3 E quattro (NG)		Gasolina	4WD	2309	100	136	04.87-07.91	■
2.3 E 20V quattro (7A)		Gasolina	4WD	2309	123	167	04.90-09.91	■
2.3 E 20V quattro (7A)		Gasolina	4WD	2309	125	170	06.88-09.91	■
COUPE II B3 (89, 8B3) 10.88-12.96					Coupe (Compact executive car-D Segment)			
2.0 20V Quattro (NM)		Gasolina	4WD	1994	118	160	08.89-07.91	■
2.2 quattro (KV)		Gasolina	4WD	2226	100	136	11.88-07.91	■
2.3 quattro (NG)	-08/91	Gasolina	4WD	2309	98	134	05.90-12.96	■
2.3 quattro (NG)		Gasolina	4WD	2309	100	136	11.88-12.92	■
2.3 20V quattro (7A)		Gasolina	4WD	2309	123	167	05.90-12.96	■
2.3 20V quattro (7A)		Gasolina	4WD	2309	125	170	11.88-07.91	■
2.6 quattro (ABC)		Gasolina	4WD	2598	110	150	08.92-12.96	■
2.8 quattro (AAH)		Gasolina	4WD	2771	128	174	08.91-12.96	■
COUPE B2 (81, 855, 856) 07.80-10.88					Coupe (Compact executive car-D Segment)			
2.2 quattro (JT)		Gasolina	4WD	2226	88	120	08.85-10.88	■
2.2 quattro (KV)		Gasolina	4WD	2226	100	136	10.84-10.88	■
2.3 quattro (NG)		Gasolina	4WD	2309	98	133	01.87-12.87	■
QUATTRO (85) 07.80-07.91					Coupe (Sports car-S Segment)			
2.2 quattro (JT)		Gasolina	4WD	2226	89	121	12.84-07.87	■
2.2 quattro (HY)		Gasolina	4WD	2226	100	136	12.84-07.87	■
2.2 quattro (KV)		Gasolina	4WD	2226	100	136	12.84-07.87	■