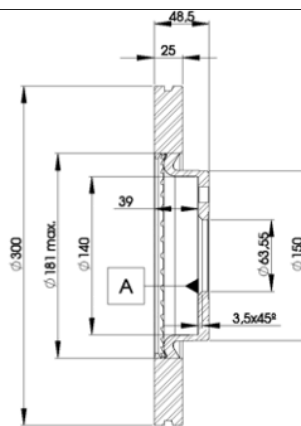
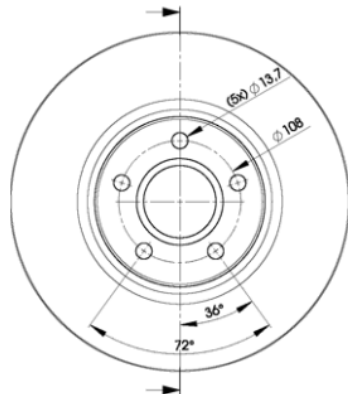


LISTA DE APLICACIONES - BUYERS GUIDE

78BD3937-2



Weight: 16.300



78BD3937-2

E1 90R-02C0452/0127



Ø300x25x48.5

WVA

31471819
31471834

MAKE

FORD
VOLVO
VOLVO (CHANGAN)

O.E.M.	MAKE
1 223 664	FORD
1 223 666	FORD
1 253 964	FORD
1 253 965	FORD
1 323 560	FORD
1 373 370	FORD
1 469 083	FORD
1 500 152	FORD
1 520 297	FORD
1797226	FORD
1825134	FORD
1829606	FORD
3M512C375B1D	FORD
3M512C375BA	FORD
3M512C375BB	FORD
3M512C375BC	FORD
3M512C375BD	FORD
3M512C375EA	FORD
3M512C375EB	FORD
7M511125AA	FORD
7M511125BA	FORD
7M511125BB	FORD
DV611125CA	FORD
DV611125DA	FORD
DV611125EA	FORD



Trac.	CC	Kw	CV
-------	----	----	----



Front / Rear

FORD

C-MAX (DM2) 02.07-09.10

MPV (Compact MPV-M1 Segment)

Model	Fuel	Trac.	CC	Kw	CV	Period	Availability
2.0 LPG (SYDA)	Gasol./Gas (LPG)	FWD	1999	107	145	06.08-09.10	■
2.0 CNG (SYDA)	Gasol./Gas (CNG)	FWD	1999	107	145	04.09-09.10	■
1.8 TDCi (KKDA)	Diesel	FWD	1753	85	115	02.07-09.10	■
1.8 TDCi (KKDB)	Diesel	FWD	1753	85	115	02.07-09.10	■

C-MAX II 10.10-

Box Body/MPV (LCVs-N1 Segment)

Model	Fuel	Trac.	CC	Kw	CV	Period	Availability
1.0 EcoBoost (M2DA)	Gasolina	FWD	998	74	100	10.12-06.19	■
1.0 EcoBoost (M2DC)	Gasolina	FWD	998	74	100	10.12-06.19	■
1.0 EcoBoost (B7DA)	Gasolina	FWD	998	92	125	10.12-06.19	■
1.0 EcoBoost (M1DA)	Gasolina	FWD	998	92	125	10.12-06.19	■
1.0 EcoBoost (M1DD)	Gasolina	FWD	998	92	125	10.12-06.19	■
1.5 EcoBoost (M8DB)	Gasolina	FWD	1498	110	150	03.15-06.19	■
1.5 EcoBoost (M9DB)	Gasolina	FWD	1498	134	182	03.15-06.19	■
1.6 Ti	Gasolina	FWD	1596	77	105	10.10-06.19	■
1.6 EcoBoost (JQDA)	Gasolina	FWD	1596	110	150	12.10-06.19	■
1.6 EcoBoost (JQDB)	Gasolina	FWD	1596	110	150	12.10-06.19	■
1.6 EcoBoost	Gasolina	FWD	1596	134	182	12.10-06.19	■
1.5 TDCi ECOnetic (AEDA)	Diesel	FWD	1499	77	105	03.15-06.19	■
1.5 TDCi (XWDA)	Diesel	FWD	1499	88	120	03.15-06.19	■
1.5 TDCi (XWDB)	Diesel	FWD	1499	88	120	03.15-06.19	■
1.5 TDCi (XWDC)	Diesel	FWD	1499	88	120	03.15-06.19	■
1.5 TDCi (XWDD)	Diesel	FWD	1499	88	120	03.15-06.19	■

LISTA DE APLICACIONES - BUYERS GUIDE

1.5 TDCi (XWDE)		Diesel	FWD	1499	88	120	03.15-06.19	■	
1.6 TDCi (T3DA)		Diesel	FWD	1560	70	95	12.10-06.19	■	
1.6 TDCi (T3DB)		Diesel	FWD	1560	70	95	12.10-06.19	■	
1.6 TDCi (T1DA)		Diesel	FWD	1560	85	115	12.10-06.19	■	
1.6 TDCi (T1DB)		Diesel	FWD	1560	85	115	12.10-06.19	■	
2.0 TDCi (TYDA)		Diesel	FWD	1997	85	115	02.11-06.19	■	
2.0 TDCi (UFDB)		Diesel	FWD	1997	103	140	02.11-06.19	■	
2.0 TDCi (T7DB)		Diesel	FWD	1997	110	150	03.15-06.19	■	
2.0 TDCi (T7DC)		Diesel	FWD	1997	110	150	03.15-06.19	■	
2.0 TDCi (TXDB)		Diesel	FWD	1997	120	163	12.10-06.19	■	
2.0 TDCi (T8DE)		Diesel	FWD	1997	125	170	03.15-06.19	■	
C-MAX II (DXA/CB7, DXA/CEU) 04.10-						MPV (Compact MPV-M1 Segment)			
1.0 EcoBoost (M2DA)		Gasolina	FWD	998	74	100	10.12-06.19	■	
1.0 EcoBoost (M2DC)		Gasolina	FWD	998	74	100	10.12-06.19	■	
1.0 EcoBoost (B7DA)		Gasolina	FWD	998	92	125	10.12-06.19	■	
1.0 EcoBoost (M1DA)		Gasolina	FWD	998	92	125	10.12-06.19	■	
1.0 EcoBoost (M1DD)		Gasolina	FWD	998	92	125	10.12-06.19	■	
1.0 EcoBoost		Gasolina	FWD	999	74	101	07.18-06.19	■	
1.0 EcoBoost		Gasolina	FWD	999	92	125	07.18-06.19	■	
1.5 EcoBoost (M8DB)		Gasolina	FWD	1498	110	150	03.15-06.19	■	
1.5 EcoBoost (M9DB)		Gasolina	FWD	1498	134	182	03.15-06.19	■	
1.6 Ti (XTDA)		Gasolina	FWD	1596	63	85	12.10-06.19	■	
1.6 Ti (XTDB)		Gasolina	FWD	1596	63	85	12.10-06.19	■	
1.6 Ti (IQDA)		Gasolina	FWD	1596	77	105	12.10-06.19	■	
1.6 Ti (IQDB)		Gasolina	FWD	1596	77	105	12.10-06.19	■	
1.6 Ti (MUDA)		Gasolina	FWD	1596	88	120	02.12-06.19	■	
1.6 Ti (MUDD)		Gasolina	FWD	1596	88	120	02.12-06.19	■	
1.6 Ti (PNDA)		Gasolina	FWD	1596	92	125	12.10-06.19	■	
1.6 Ti (PNDD)		Gasolina	FWD	1596	92	125	12.10-06.19	■	
1.6 EcoBoost (JQDA)		Gasolina	FWD	1596	110	150	12.10-06.19	■	
1.6 EcoBoost (JQDB)		Gasolina	FWD	1596	110	150	12.10-06.19	■	
1.6 EcoBoost (JTDA)		Gasolina	FWD	1596	134	182	12.10-06.19	■	
1.6 EcoBoost (JTDB)		Gasolina	FWD	1596	134	182	12.10-06.19	■	
1.6 LPG (MUDA)		Gasol./Gas (LPG)	FWD	1596	86	117	02.12-06.19	■	
1.6 LPG (MUDD)		Gasol./Gas (LPG)	FWD	1596	86	117	02.12-06.19	■	
1.6 LPG (MUDA)		Gasol./Gas (LPG)	FWD	1596	88	120	02.12-06.19	■	
1.6 LPG (MUDD)		Gasol./Gas (LPG)	FWD	1596	88	120	02.12-06.19	■	
1.6 CNG (MUDA)		Gasol./Gas (CNG)	FWD	1596	86	117	01.13-12.14	■	
1.6 Flexifuel (MUDA)		Gasol./Etanol	FWD	1596	88	120	02.11-06.19	■	
1.6 Flexifuel (MUDD)		Gasol./Etanol	FWD	1596	88	120	02.11-06.19	■	
2.0 Energi (UADA)		Gasol./eléc.	FWD	1999	136	185	01.15-06.19	■	
1.5 TDCi (XXDA)		Diesel	FWD	1499	70	95	03.15-06.19	■	
1.5 TDCi (XXDC)		Diesel	FWD	1499	70	95	03.15-06.19	■	
1.5 TDCi (XXDD)		Diesel	FWD	1499	70	95	03.15-06.19	■	
1.5 TDCi ECOnetic (AEDA)		Diesel	FWD	1499	77	105	03.15-06.19	■	
1.5 TDCi (XWDA)		Diesel	FWD	1499	88	120	03.15-06.19	■	
1.5 TDCi (XWDB)		Diesel	FWD	1499	88	120	03.15-06.19	■	

LISTA DE APLICACIONES - BUYERS GUIDE

1.5 TDCi (XWDC)		Diesel	FWD	1499	88	120	03.15-06.19	■	
1.5 TDCi (XWDD)		Diesel	FWD	1499	88	120	03.15-06.19	■	
1.5 TDCi (XWDE)		Diesel	FWD	1499	88	120	03.15-06.19	■	
1.6 TDCi (T3DA)		Diesel	FWD	1560	70	95	12.10-06.19	■	
1.6 TDCi (T3DB)		Diesel	FWD	1560	70	95	12.10-06.19	■	
1.6 TDCi (T1DA)		Diesel	FWD	1560	85	115	12.10-06.19	■	
1.6 TDCi (T1DB)		Diesel	FWD	1560	85	115	12.10-06.19	■	
2.0 TDCi (TYDA)		Diesel	FWD	1997	85	115	02.11-06.19	■	
2.0 TDCi (UKDB)		Diesel	FWD	1997	100	136	02.11-06.19	■	
2.0 TDCi (UFDB)		Diesel	FWD	1997	103	140	04.10-06.19	■	
2.0 TDCi (T7DB)		Diesel	FWD	1997	110	150	03.15-06.19	■	
2.0 TDCi (T7DC)		Diesel	FWD	1997	110	150	03.15-06.19	■	
2.0 TDCi (T7DD)		Diesel	FWD	1997	110	150	03.15-06.19	■	
2.0 TDCi (TXDB)		Diesel	FWD	1997	120	163	12.10-06.19	■	
2.0 TDCi (T8DE)		Diesel	FWD	1997	125	170	03.15-06.19	■	
FOCUS II 07.04-07.11							Estate Van (Compact car-C Segment)		
2.0 TDCi (IXDA)		Diesel	FWD	1997	81	110	06.09-07.11	■	
2.0 TDCi (G6DB)		Diesel	FWD	1997	100	136	09.05-07.11	■	
FOCUS II (DA_, HCP, DP) 07.04-09.13							Hatchback (Compact car-C Segment)		
2.0		Gasolina	FWD	1999	104	140	06.05-09.08	■	
2.0 LPG (SYDA)		Gasol./Gas (LPG)	FWD	1999	107	145	06.08-07.11	■	
2.0 CNG (SYDA)		Gasol./Gas (CNG)	FWD	1999	107	145	04.09-07.11	■	
2.0 Flex (SYDA)		Gasol./Etanol	FWD	1999	107	145	10.08-03.10	■	
2.0 TDCi (G6DE)		Diesel	FWD	1997	98	133	07.04-01.08	■	
2.0 TDCi (G6DF)		Diesel	FWD	1997	98	133	07.04-01.08	■	
FOCUS II Turnier (DA_, FFS, DS) 07.04-09.12							Estate (Compact car-C Segment)		
2.0 LPG (SYDA)		Gasol./Gas (LPG)	FWD	1999	107	145	06.08-07.11	■	
2.0 TDCi (G6DE)		Diesel	FWD	1997	98	133	07.04-01.08	■	
2.0 TDCi (G6DF)		Diesel	FWD	1997	98	133	07.04-01.08	■	
FOCUS III (C346) 07.10-							Hatchback (Compact car-C Segment)		
2.0		Gasolina	FWD	1999	119	162	09.11-06.18	■	
FOCUS III (C346) 07.10-							Saloon (Compact car-C Segment)		
2.0		Gasolina	FWD	1999	119	162	08.11-02.20	■	
FOCUS C-MAX (DM2) 10.03-03.07							MPV (Compact MPV-M1 Segment)		
2.0 (AODA)		Gasolina	FWD	1999	107	145	03.04-03.07	■	
2.0 (AODB)		Gasolina	FWD	1999	107	145	03.04-03.07	■	
2.0 (AODE)		Gasolina	FWD	1999	107	145	03.04-03.07	■	
2.0 (SYDA)		Gasolina	FWD	1999	107	145	03.04-03.07	■	
1.8 TDCi (KKDA)		Diesel	FWD	1753	85	115	01.05-03.07	■	
1.8 TDCi (KKDB)		Diesel	FWD	1753	85	115	01.05-03.07	■	
2.0 TDCi (G6DC)		Diesel	FWD	1997	98	133	10.03-03.07	■	
2.0 TDCi (G6DE)		Diesel	FWD	1997	98	133	10.03-03.07	■	
2.0 TDCi (G6DF)		Diesel	FWD	1997	98	133	10.03-03.07	■	
2.0 TDCi (G6DA)		Diesel	FWD	1997	100	136	10.03-03.07	■	
2.0 TDCi (G6DB)		Diesel	FWD	1997	100	136	10.03-03.07	■	
2.0 TDCi (G6DD)		Diesel	FWD	1997	100	136	10.03-03.07	■	

LISTA DE APLICACIONES - BUYERS GUIDE

2.0 TDCi (G6DG)		Diesel	FWD	1997	100	136	10.03-03.07	■	
GRAND C-MAX 12.10-					Box Body/MPV (LCVs-N1 Segment)				
1.0 EcoBoost (B3DA)		Gasolina	FWD	998	74	100	10.12-06.18	■	
1.0 EcoBoost (M2DA)		Gasolina	FWD	998	74	100	10.12-06.18	■	
1.0 EcoBoost (M2DC)		Gasolina	FWD	998	74	100	10.12-06.18	■	
1.0 EcoBoost (B7DA)		Gasolina	FWD	998	92	125	10.12-06.19	■	
1.0 EcoBoost (M1DA)		Gasolina	FWD	998	92	125	10.12-06.19	■	
1.0 EcoBoost (M1DD)		Gasolina	FWD	998	92	125	10.12-06.19	■	
1.5 EcoBoost (M8DB)		Gasolina	FWD	1498	110	150	03.15-06.19	■	
1.6 Ti		Gasolina	FWD	1596	92	125	12.10-12.14	■	
1.6 EcoBoost (JQDA)		Gasolina	FWD	1596	110	150	12.10-06.19	■	
1.6 EcoBoost (JQDB)		Gasolina	FWD	1596	110	150	12.10-06.19	■	
1.6 EcoBoost		Gasolina	FWD	1596	134	182	12.10-06.19	■	
1.5 TDCi (XWDA)		Diesel	FWD	1499	88	120	03.15-06.19	■	
1.5 TDCi (XWDB)		Diesel	FWD	1499	88	120	03.15-06.19	■	
1.5 TDCi (XWDC)		Diesel	FWD	1499	88	120	03.15-06.19	■	
1.5 TDCi (XWDD)		Diesel	FWD	1499	88	120	03.15-06.19	■	
1.5 TDCi (XWDE)		Diesel	FWD	1499	88	120	03.15-06.19	■	
1.6 TDCi (T3DA)		Diesel	FWD	1560	70	95	12.10-06.19	■	
1.6 TDCi (T3DB)		Diesel	FWD	1560	70	95	12.10-06.19	■	
1.6 TDCi (T1DA)		Diesel	FWD	1560	85	115	12.10-06.19	■	
1.6 TDCi (T1DB)		Diesel	FWD	1560	85	115	12.10-06.19	■	
2.0 TDCi (TYDA)		Diesel	FWD	1997	85	115	02.11-06.19	■	
2.0 TDCi (UFDB)		Diesel	FWD	1997	103	140	12.10-06.19	■	
2.0 TDCi (T7DB)		Diesel	FWD	1997	110	150	03.15-06.19	■	
2.0 TDCi (T7DC)		Diesel	FWD	1997	110	150	03.15-06.19	■	
2.0 TDCi (TXDB)		Diesel	FWD	1997	120	163	12.10-06.19	■	
2.0 TDCi (T8DE)		Diesel	FWD	1997	125	170	03.15-06.19	■	
GRAND C-MAX (DXA/CB7, DXA/CEU) 12.10-					MPV (Large MPV-M1 Segment)				
1.0 EcoBoost (B3DA)		Gasolina	FWD	998	74	100	10.12-06.19	■	
1.0 EcoBoost (M2DA)		Gasolina	FWD	998	74	100	10.12-06.19	■	
1.0 EcoBoost (M2DC)		Gasolina	FWD	998	74	100	10.12-06.19	■	
1.0 EcoBoost (B7DA)		Gasolina	FWD	998	92	125	10.12-06.19	■	
1.0 EcoBoost (M1DA)		Gasolina	FWD	998	92	125	10.12-06.19	■	
1.0 EcoBoost (M1DD)		Gasolina	FWD	998	92	125	10.12-06.19	■	
1.0 EcoBoost		Gasolina	FWD	999	74	101	07.18-06.19	■	
1.0 EcoBoost		Gasolina	FWD	999	92	125	07.18-06.19	■	
1.5 EcoBoost (M8DB)		Gasolina	FWD	1498	110	150	03.15-06.19	■	
1.5 EcoBoost (M9DB)		Gasolina	FWD	1498	134	182	03.15-06.19	■	
1.6 Ti (XTDA)		Gasolina	FWD	1596	63	86	12.10-06.19	■	
1.6 Ti (IQDA)		Gasolina	FWD	1596	77	105	12.10-06.19	■	
1.6 Ti (IQDB)		Gasolina	FWD	1596	77	105	12.10-06.19	■	
1.6 Ti (PNDA)		Gasolina	FWD	1596	92	125	12.10-06.19	■	
1.6 Ti (PNDD)		Gasolina	FWD	1596	92	125	12.10-06.19	■	
1.6 EcoBoost (JQDA)		Gasolina	FWD	1596	110	150	12.10-06.19	■	
1.6 EcoBoost (JQDB)		Gasolina	FWD	1596	110	150	12.10-06.19	■	
1.6 EcoBoost (JTDA)		Gasolina	FWD	1596	134	182	12.10-06.19	■	
1.6 EcoBoost (JTDB)		Gasolina	FWD	1596	134	182	12.10-06.19	■	
1.5 TDCi (XXDA)		Diesel	FWD	1499	70	95	03.15-06.19	■	
1.5 TDCi (XXDC)		Diesel	FWD	1499	70	95	03.15-06.19	■	
1.5 TDCi (XWDA)		Diesel	FWD	1499	88	120	03.15-06.19	■	

LISTA DE APLICACIONES - BUYERS GUIDE

1.5 TDCi (XWDB)		Diesel	FWD	1499	88	120	03.15-06.19	■	
1.5 TDCi (XWDC)		Diesel	FWD	1499	88	120	03.15-06.19	■	
1.5 TDCi (XWDD)		Diesel	FWD	1499	88	120	03.15-06.19	■	
1.5 TDCi (XWDE)		Diesel	FWD	1499	88	120	03.15-06.19	■	
1.6 TDCi (T3DA)		Diesel	FWD	1560	70	95	12.10-06.19	■	
1.6 TDCi (T3DB)		Diesel	FWD	1560	70	95	12.10-06.19	■	
1.6 TDCi (T1DA)		Diesel	FWD	1560	85	115	12.10-06.19	■	
1.6 TDCi (T1DB)		Diesel	FWD	1560	85	115	12.10-06.19	■	
2.0 TDCi (TYDA)		Diesel	FWD	1997	85	115	02.11-06.19	■	
2.0 TDCi (UKDB)		Diesel	FWD	1997	100	136	02.11-06.19	■	
2.0 TDCi (UFDB)		Diesel	FWD	1997	103	140	02.11-06.19	■	
2.0 TDCi (T7DB)		Diesel	FWD	1997	110	150	03.15-06.19	■	
2.0 TDCi (T7DC)		Diesel	FWD	1997	110	150	03.15-06.19	■	
2.0 TDCi (TXDB)		Diesel	FWD	1997	120	163	12.10-06.19	■	
2.0 TDCi (T8DE)		Diesel	FWD	1997	125	170	03.15-06.19	■	
KUGA II / ESCAPE III 05.12-							SUV Van (Compact SUV-J Segment)		
1.5 EcoBoost (BNMA)		Gasolina	FWD	1499	88	120	06.19-12.19	■	
1.5 EcoBoost (M8MA)		Gasolina	FWD	1499	110	150	09.14-12.19	■	
1.5 TDCi (XWMB)		Diesel	FWD	1499	88	120	01.19-12.19	■	
1.5 TDCi (XWMC)		Diesel	FWD	1499	88	120	01.19-12.19	■	
2.0 TDCi (XRMA)		Diesel	FWD	1997	88	120	09.14-12.19	■	
2.0 TDCi (XRMB)		Diesel	FWD	1997	88	120	09.14-12.19	■	
2.0 TDCi		Diesel	FWD	1997	103	140	06.12-12.19	■	
2.0 TDCi (T7MA)		Diesel	FWD	1997	110	150	09.14-12.19	■	
2.0 TDCi (T7MB)		Diesel	FWD	1997	110	150	09.14-12.19	■	
KUGA II / ESCAPE III (DM2) 05.12-							SUV (Compact SUV-J Segment)		
1.5 EcoBoost (BNMA)		Gasolina	FWD	1499	88	120	01.16-06.19	■	
1.5 EcoBoost (M8MA)		Gasolina	FWD	1499	110	150	09.14-06.19	■	
1.5 EcoBoost		Gasolina	FWD	1499	132	180	10.15-	■	
1.5 EcoBoost (M9MA)		Gasolina	FWD	1499	134	182	06.16-	■	
1.6 EcoBoost (JQMA)		Gasolina	FWD	1596	110	150	03.13-09.14	■	
1.6 EcoBoost (JQMB)		Gasolina	FWD	1596	110	150	03.13-09.14	■	
2.0		Gasolina	FWD	1999	179	243	03.13-06.16	■	
2.5		Gasolina	FWD	2488	110	150	01.14-12.19	■	
2.5		Gasolina	FWD	2488	125	170	09.13-	■	
1.5 EcoBoost E85		Etanol	FWD	1499	110	150	02.19-11.19	■	
1.5 TDCi (XWMB)		Diesel	FWD	1499	88	120	07.16-06.19	■	
1.5 TDCi (XWMC)		Diesel	FWD	1499	88	120	07.16-06.19	■	
2.0 TDCi (TYMA)		Diesel	FWD	1997	85	115	03.13-12.19	■	
2.0 TDCi (XRMA)		Diesel	FWD	1997	88	120	09.14-06.19	■	
2.0 TDCi (XRMB)		Diesel	FWD	1997	88	120	09.14-06.19	■	
2.0 TDCi (UKMA)		Diesel	FWD	1997	100	136	03.13-12.19	■	
2.0 TDCi (UFMA)		Diesel	FWD	1997	103	140	03.13-09.14	■	
2.0 TDCi (T7MA)		Diesel	FWD	1997	110	150	09.14-06.19	■	
2.0 TDCi (T7MB)		Diesel	FWD	1997	110	150	09.14-06.19	■	
2.0 TDCi (T7MC)		Diesel	FWD	1997	110	150	09.14-06.19	■	
2.0 TDCi (T7MD)		Diesel	FWD	1997	110	150	09.14-06.19	■	
2.0 TDCi 4x4 (TXDA)		Diesel	4WD	1997	120	163	03.13-09.14	■	
2.0 TDCi 4x4 (TXMA)		Diesel	4WD	1997	120	163	03.13-09.14	■	

LISTA DE APLICACIONES - BUYERS GUIDE

TOURNEO CONNECT II / GRAND TOURNEO CONNECT V408 09.13-					MPV (Large MPV-M1 Segment)			
1.0 EcoBoost (B3GA)		Gasolina	FWD	998	74	100	11.13-12.22	■
1.0 EcoBoost (M2GA)		Gasolina	FWD	998	74	100	11.13-12.22	■
1.0 EcoBoost (M2GB)		Gasolina	FWD	998	74	100	11.13-12.22	■
1.6 EcoBoost (JQGA)		Gasolina	FWD	1596	110	150	11.13-12.22	■
1.5 TDCi (XUGA)		Diesel	FWD	1499	55	75	05.15-12.22	■
1.5 TDCi		Diesel	FWD	1499	70	95	08.16-12.22	■
1.5 TDCi (XVGA)		Diesel	FWD	1499	74	101	05.15-12.22	■
1.5 TDCi (XVGB)		Diesel	FWD	1499	74	101	05.15-12.22	■
1.5 TDCi (XVGC)		Diesel	FWD	1499	74	101	05.15-12.22	■
1.5 TDCi (XXGA)		Diesel	FWD	1499	74	101	05.15-12.22	■
1.5 TDCi (XWGA)		Diesel	FWD	1499	88	120	05.15-12.22	■
1.5 TDCi (XWGB)		Diesel	FWD	1499	88	120	05.15-12.22	■
1.5 TDCi (XWGC)		Diesel	FWD	1499	88	120	05.15-12.22	■
1.6 TDCi (UBGA)		Diesel	FWD	1560	55	75	09.13-12.22	■
1.6 TDCi (TZGA)		Diesel	FWD	1560	70	95	09.13-12.22	■
1.6 TDCi (TZGB)		Diesel	FWD	1560	70	95	09.13-12.22	■
1.6 TDCi (T1GA)		Diesel	FWD	1560	85	115	09.13-12.22	■
TRANSIT CONNECT II 09.13-					MPV (Large MPV-M1 Segment)			
2.5 Duratec		Gasolina	FWD	2488	126	171	09.13-	■
2.5 LPG		Gasol./Gas (LPG)	FWD	2488	126	171	09.13-	■
2.5 CNG		Gasol./Gas (CNG)	FWD	2488	126	171	09.13-	■
1.5 TDCi (XUGA)		Diesel	FWD	1499	55	75	08.15-	■
1.5 TDCi (XVGA)		Diesel	FWD	1499	74	101	05.15-	■
1.5 TDCi (XVGB)		Diesel	FWD	1499	74	101	05.15-	■
1.5 TDCi (XVGC)		Diesel	FWD	1499	74	101	05.15-	■
1.5 TDCi (XXGA)		Diesel	FWD	1499	74	101	05.15-	■
1.5 TDCi (XWGA)		Diesel	FWD	1499	88	120	05.15-	■
1.5 TDCi (XWGB)		Diesel	FWD	1499	88	120	05.15-	■
1.5 TDCi (XWGC)		Diesel	FWD	1499	88	120	05.15-	■
1.6 TDCi (UBGA)		Diesel	FWD	1560	55	75	09.13-	■
1.6 TDCi (TZGA)		Diesel	FWD	1560	70	95	09.13-	■
1.6 TDCi (TZGB)		Diesel	FWD	1560	70	95	09.13-	■
1.6 TDCi (T1GA)		Diesel	FWD	1560	85	115	09.13-	■
TRANSIT CONNECT II V408 09.13-					Box Body/MPV (LCVs-N1 Segment)			
1.0 EcoBoost (B3GA)		Gasolina	FWD	998	74	100	09.13-	■
1.0 EcoBoost (M2GA)		Gasolina	FWD	998	74	100	09.13-	■
1.0 EcoBoost (M2GB)		Gasolina	FWD	998	74	100	09.13-	■
1.6 EcoBoost (JQGA)		Gasolina	FWD	1596	110	150	11.13-	■
2.5 Duratec		Gasolina	FWD	2488	126	171	09.13-	■
2.5 LPG		Gasol./Gas (LPG)	FWD	2488	126	171	09.13-12.23	■
2.5 CNG		Gasol./Gas (CNG)	FWD	2488	126	171	09.13-12.23	■
1.5 TDCi (XUGA)		Diesel	FWD	1499	55	75	08.15-	■
1.5 TDCi		Diesel	FWD	1499	70	95	03.16-	■
1.5 EcoBlue (Z2GA)		Diesel	FWD	1499	74	101	05.18-	■
1.5 TDCi (XVGA)		Diesel	FWD	1499	74	101	05.15-	■
1.5 TDCi (XVGB)		Diesel	FWD	1499	74	101	05.15-	■

LISTA DE APLICACIONES - BUYERS GUIDE

1.5 TDCi (XVGC)		Diesel	FWD	1499	74	101	05.15-	■	
1.5 TDCi (XXGA)		Diesel	FWD	1499	74	101	05.15-	■	
1.5 TDCi (XWGA)		Diesel	FWD	1499	88	120	05.15-	■	
1.5 TDCi (XWGB)		Diesel	FWD	1499	88	120	05.15-	■	
1.5 TDCi (XWGC)		Diesel	FWD	1499	88	120	05.15-	■	
1.6 TDCi (UBGA)		Diesel	FWD	1560	55	75	09.13-	■	
1.6 TDCi (TZGA)		Diesel	FWD	1560	70	95	09.13-	■	
1.6 TDCi (TZGB)		Diesel	FWD	1560	70	95	09.13-	■	
1.6 TDCi (T1GA)		Diesel	FWD	1560	85	115	09.13-	■	
VOLVO									
C30 (533) 09.06-12.13						Hatchback (Compact car-C Segment)			
2.4 i (B 5244 S4)		Gasolina	FWD	2435	125	170	10.06-12.12	■	
T5 (B 5254 T7)	Rim 16	Gasolina	FWD	2521	169	230	03.07-12.12	■	
T5		Gasolina	FWD	2521	184	250	10.07-12.13	■	
2.0 FlexFuel (B 4204 S4)		Gasol./Etanol	FWD	1999	107	146	01.10-12.12	■	
2.0 D (D 4204 T)		Diesel	FWD	1998	100	136	10.06-12.12	■	
D5 (D 5244 T9)		Diesel	FWD	2400	120	163	10.06-12.12	■	
D5 (D 5244 T13)		Diesel	FWD	2400	132	180	10.06-12.12	■	
D5 (D 5244 T8)		Diesel	FWD	2400	132	180	10.06-12.12	■	
C70 II (542) 03.06-12.13						Convertible (Pony car-F Segment)			
2.4 (B 5244 S5)	Rim 16	Gasolina	FWD	2435	103	140	03.06-10.09	■	
2.4 i (B 5244 S4)	Rim 16	Gasolina	FWD	2435	125	170	03.06-10.09	■	
T5 (B 5254 T3)	Rim 16	Gasolina	FWD	2521	162	220	03.06-02.07	■	
T5 (B 5254 T7)	Rim 16	Gasolina	FWD	2521	169	230	03.07-06.13	■	
2.0 D (D 4204 T)	Rim 16	Diesel	FWD	1998	100	136	01.08-10.09	■	
2.4 D (D 5244 T9)		Diesel	FWD	2400	120	163	03.07-06.13	■	
S40 II (544) 12.03-12.12						Saloon (Compact executive car-D Segment)			
1.6 (B 4164 S3)	Rim 16	Gasolina	FWD	1596	74	101	01.05-12.12	■	
1.8 (B 4184 S11)	Rim 16	Gasolina	FWD	1798	92	125	04.04-12.10	■	
2.0 (B 4204 S3)	Rim 16	Gasolina	FWD	1999	107	146	10.06-12.12	■	
2.4 (B 5244 S5)	Rim 16	Gasolina	FWD	2435	103	140	01.04-12.10	■	
2.4 (B 5244 S4)	Rim 16	Gasolina	FWD	2435	125	170	01.04-12.12	■	
T5 (B 5254 T3)	Rim 16	Gasolina	FWD	2521	162	220	01.04-12.07	■	
T5 AWD (B 5254 T3)	Rim 16	Gasolina	4WD	2521	162	220	04.04-12.07	■	
T5 (B 5254 T7)	Rim 16	Gasolina	FWD	2521	169	230	03.07-12.12	■	
T5 AWD (B 5254 T7)	Rim 16	Gasolina	4WD	2521	169	230	03.07-12.10	■	
1.8 Flexfuel (B 4184 S8)	Rim 16	Gasol./Etanol	FWD	1798	92	125	01.06-12.10	■	
2.0 F (B 4204 S4)	Rim 16	Gasol./Etanol	FWD	1999	107	146	10.09-12.12	■	
D2 (D 4162 T)	Rim 16	Diesel	FWD	1560	84	115	10.10-12.12	■	
D3 (D 5204 T5)	Rim 16	Diesel	FWD	1984	110	150	10.10-12.12	■	
D4 (D 5204 T)	Rim 16	Diesel	FWD	1984	130	177	10.10-12.12	■	
D4 (D 4204 T2)	Rim 16	Diesel	FWD	1998	96	131	07.05-12.06	■	
2.0 CDI (D 4204 T2)		Diesel	FWD	1998	98	133	07.05-12.06	■	
2.0 D (D 4204 T)	Rim 16	Diesel	FWD	1998	100	136	01.04-12.10	■	
2.4 CDI (D 5244 T9)		Diesel	FWD	2400	120	163	03.07-12.10	■	
D5 (D 5244 T13)	Rim 16	Diesel	FWD	2400	132	179	03.06-12.10	■	
D5 (D 5244 T8)	Rim 16	Diesel	FWD	2400	132	179	03.06-12.10	■	

LISTA DE APLICACIONES - BUYERS GUIDE

V40 (526) 09.13-12.15					Hatchback Van (Compact executive car-D Segment)			
1.6 D2/ DRIVe		Diesel	FWD	1560	84	114	09.13-12.15	■
2.0 D3		Diesel	FWD	1984	110	150	09.13-12.15	■
2.0 D4		Diesel	FWD	1984	130	177	09.13-12.14	■
V40 (526) 10.12-08.19					Hatchback (Compact executive car-D Segment)			
T3		Gasolina	FWD	1498	112	152	04.15-08.19	■
T4 GTDi		Gasolina	FWD	1596	132	180	10.12-12.16	■
T3		Gasolina	FWD	1969	112	152	02.15-08.19	■
T4		Gasolina	FWD	1969	140	190	08.15-08.19	■
T4		Gasolina	FWD	1984	132	180	10.13-12.15	■
T5		Gasolina	FWD	1984	157	214	02.13-12.15	■
T5		Gasolina	FWD	2497	183	249	01.14-12.15	■
T5		Gasolina	FWD	2497	187	254	10.12-12.16	■
D2		Diesel	FWD	1560	84	114	10.12-12.16	■
D2		Diesel	FWD	1969	88	120	02.15-08.19	■
D3		Diesel	FWD	1969	110	150	04.15-08.19	■
D4		Diesel	FWD	1969	140	190	05.14-08.19	■
D4 Polestar		Diesel	FWD	1969	147	200	05.14-08.19	■
D3		Diesel	FWD	1984	110	150	10.12-03.15	■
D4		Diesel	FWD	1984	130	177	10.12-12.14	■
V50 (545) 12.03-12.12					Estate (Luxury car-F Segment)			
1.6 (B 4164 S3)	Rim 16	Gasolina	FWD	1596	74	101	01.05-12.12	■
1.8 (B 4184 S11)	Rim 16	Gasolina	FWD	1798	92	125	04.04-12.10	■
2.0 (B 4204 S3)	Rim 16	Gasolina	FWD	1999	107	146	10.06-12.12	■
2.4 (B 5244 S5)	Rim 16	Gasolina	FWD	2435	103	140	04.04-12.10	■
2.4 (B 5244 S4)	Rim 16	Gasolina	FWD	2435	125	170	04.04-12.10	■
2.4 AWD (B 5244 S4)	Rim 16	Gasolina	4WD	2435	125	170	08.06-12.09	■
T5 (B 5254 T3)	Rim 16	Gasolina	FWD	2521	162	220	04.04-12.07	■
T5 AWD (B 5254 T3)	Rim 16	Gasolina	4WD	2521	162	220	04.04-12.07	■
T5 (B 5254 T7)	Rim 16	Gasolina	FWD	2521	169	230	03.07-12.12	■
T5 AWD (B 5254 T7)	Rim 16	Gasolina	4WD	2521	169	230	03.07-12.10	■
1.8 Bifuel		Gasol./Gas (LPG)	FWD	1798	93	126	01.09-09.10	■
1.8 Flexfuel (B 4184 S8)		Gasol./Etanol	FWD	1798	92	125	01.05-12.10	■
2.0 FlexFuel (B 4204 S4)		Gasol./Etanol	FWD	1999	107	146	01.10-12.12	■
1.6 D (D 4164 T)		Diesel	FWD	1560	80	109	03.05-12.12	■
1.6 D (D 4164 T)	Rim 16	Diesel	FWD	1560	81	110	01.05-12.11	■
D2 (D 4162 T)		Diesel	FWD	1560	84	114	01.10-12.12	■
D3 (D 5204 T5)	Rim 16	Diesel	FWD	1984	110	150	10.10-12.12	■
D4 (D 5204 T)	Rim 16	Diesel	FWD	1984	130	177	10.10-12.12	■
2.0 D4 (D 4204 T2)		Diesel	FWD	1998	96	131	07.05-12.06	■
2.0 CDI (D 4204 T2)		Diesel	FWD	1998	98	133	12.03-12.06	■
2.0 D (D 4204 T)	Rim 16	Diesel	FWD	1998	100	136	04.04-12.10	■
2.4 TDi (D 5244 T9)	Rim 16	Diesel	FWD	2400	120	163	05.07-12.10	■
D5 (D 5244 T13)	Rim 16	Diesel	FWD	2400	132	179	03.06-12.10	■
D5 (D 5244 T8)	Rim 16	Diesel	FWD	2400	132	179	03.06-12.10	■
VOLVO (CHANGAN)								
S40 06.06-					Saloon (Compact car-C Segment)			
2.4		Gasolina	FWD	2435	125	170	06.06-12.11	■

LISTA DE APLICACIONES - BUYERS GUIDE

2.5		Gasolina	FWD	2521	162	220	06.06-12.10	■
-----	--	----------	-----	------	-----	-----	-------------	---