

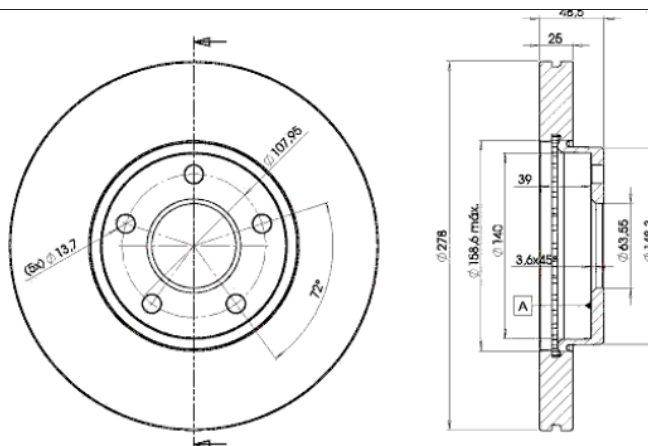
LISTA DE APLICACIONES - BUYERS GUIDE

78BD3963-2



Weight: 14.284

O.E.M.	MAKE
1 223 663	FORD
1 223 665	FORD
1 253 729	FORD
1 253 730	FORD
1 320 352	FORD
1 373 369	FORD
1 469 082	FORD
1 501 069	FORD
1 734 696	FORD
2 745 09	VOLVO
3 126 271 8	VOLVO
AV61-1125-BB	FORD



78BD3963-2

E1 90R-02C0452/0118



Ø278x25x48.5

MAKE
FORD
FORD (CHANGAN)
MG (SAIC)
VOLVO



Trac.	CC	Kw	CV
-------	----	----	----



Front / Rear

FORD

C-MAX (DM2) 02.07-09.10

MPV (Compact MPV-M1 Segment)

1.6 (HWDA)	Gasolina	FWD	1596	74	100	02.07-09.10	■
1.6 (HWDB)	Gasolina	FWD	1596	74	100	02.07-09.10	■
1.6 (SHDA)	Gasolina	FWD	1596	74	100	02.07-09.10	■
1.6 (SHDB)	Gasolina	FWD	1596	74	100	02.07-09.10	■
1.6 (SHDC)	Gasolina	FWD	1596	74	100	02.07-09.10	■
1.6 (HXDA)	Gasolina	FWD	1596	85	116	04.07-09.10	■
1.6 (HXDB)	Gasolina	FWD	1596	85	116	04.07-09.10	■
1.6 (SIDA)	Gasolina	FWD	1596	85	116	04.07-09.10	■
1.8 (QQDA)	Gasolina	FWD	1798	92	125	02.07-09.10	■
1.8 (QQDB)	Gasolina	FWD	1798	92	125	02.07-09.10	■
2.0 (AODA)	Gasolina	FWD	1999	107	145	02.07-09.10	■
2.0 (AODB)	Gasolina	FWD	1999	107	145	02.07-09.10	■
2.0 (AODE)	Gasolina	FWD	1999	107	145	02.07-09.10	■
2.0 (SYDA)	Gasolina	FWD	1999	107	145	02.07-09.10	■
1.6 TDCi (GPDA)	Diesel	FWD	1560	66	90	02.07-09.10	■
1.6 TDCi (HHDA)	Diesel	FWD	1560	66	90	02.07-09.10	■
1.6 TDCi (HHDB)	Diesel	FWD	1560	66	90	02.07-09.10	■
2.0 TDCi (IXDA)	Diesel	FWD	1997	81	110	02.08-09.10	■
2.0 TDCi (G6DC)	Diesel	FWD	1997	98	133	02.07-09.10	■
2.0 TDCi (G6DE)	Diesel	FWD	1997	98	133	02.07-09.10	■
2.0 TDCi (G6DF)	Diesel	FWD	1997	98	133	02.07-09.10	■
2.0 TDCi (G6DA)	Diesel	FWD	1997	100	136	02.07-09.10	■
2.0 TDCi (G6DB)	Diesel	FWD	1997	100	136	02.07-09.10	■

LISTA DE APLICACIONES - BUYERS GUIDE

2.0 TDCi (G6DD)		Diesel	FWD	1997	100	136	02.07-09.10	■
2.0 TDCi (G6DG)		Diesel	FWD	1997	100	136	02.07-09.10	■
FOCUS II 10.06-09.10					Convertible (Compact car-C Segment)			
1.6 (HWDA)		Gasolina	FWD	1596	74	100	10.06-09.10	■
1.6 (HWDB)		Gasolina	FWD	1596	74	100	10.06-09.10	■
1.6 (SHDA)		Gasolina	FWD	1596	74	100	10.06-09.10	■
1.6 (SHDB)		Gasolina	FWD	1596	74	100	10.06-09.10	■
1.6 (SHDC)		Gasolina	FWD	1596	74	100	10.06-09.10	■
2.0 (AODA)		Gasolina	FWD	1999	107	145	10.06-09.10	■
2.0 (AODB)		Gasolina	FWD	1999	107	145	10.06-09.10	■
2.0 (AODE)		Gasolina	FWD	1999	107	145	10.06-09.10	■
2.0 (SYDA)		Gasolina	FWD	1999	107	145	10.06-09.10	■
2.0 TDCi (G6DA)		Diesel	FWD	1997	100	136	10.06-09.10	■
2.0 TDCi (G6DB)		Diesel	FWD	1997	100	136	10.06-09.10	■
2.0 TDCi (G6DD)		Diesel	FWD	1997	100	136	10.06-09.10	■
2.0 TDCi (G6DG)		Diesel	FWD	1997	100	136	10.06-09.10	■
FOCUS II 07.04-07.11					Estate Van (Compact car-C Segment)			
1.4 (ASDA)		Gasolina	FWD	1388	59	80	09.05-07.11	■
1.4 (ASDB)		Gasolina	FWD	1388	59	80	09.05-07.11	■
1.6 (HWDA)		Gasolina	FWD	1596	74	101	09.05-07.11	■
1.6 Ti-VCT (HXDA)		Gasolina	FWD	1596	85	116	09.05-07.11	■
1.6 Ti-VCT (HXDB)		Gasolina	FWD	1596	85	116	09.05-07.11	■
1.6 Ti-VCT (SIDA)		Gasolina	FWD	1596	85	116	09.05-07.11	■
1.8 Flexifuel (Q7DA)		Gasol./Etanol	FWD	1798	92	125	06.09-07.11	■
1.8 Flexifuel (QQDA)		Gasol./Etanol	FWD	1798	92	125	06.09-07.11	■
1.6 TDCi (HHDA)		Diesel	FWD	1560	66	90	09.05-07.11	■
1.6 TDCi (G8DC)		Diesel	FWD	1560	74	101	11.04-07.11	■
1.6 TDCi (MTDA)		Diesel	FWD	1560	74	101	11.04-07.11	■
1.6 TDCi (G8DA)		Diesel	FWD	1560	80	109	07.04-07.11	■
FOCUS II (DA_, HCP, DP) 07.04-09.13					Hatchback (Compact car-C Segment)			
1.4 (ASDA)		Gasolina	FWD	1388	59	80	07.04-09.12	■
1.4 (ASDB)		Gasolina	FWD	1388	59	80	07.04-09.12	■
1.6 (HWDA)		Gasolina	FWD	1596	74	100	07.04-09.12	■
1.6 (HWDB)		Gasolina	FWD	1596	74	100	07.04-09.12	■
1.6 (SHDA)		Gasolina	FWD	1596	74	100	07.04-09.12	■
1.6 (SHDB)		Gasolina	FWD	1596	74	100	07.04-09.12	■
1.6 (SHDC)		Gasolina	FWD	1596	74	100	07.04-09.12	■
1.6		Gasolina	FWD	1596	81	110	01.10-09.12	■
1.6 Ti (HXDA)		Gasolina	FWD	1596	85	115	07.04-09.12	■
1.6 Ti (HXDB)		Gasolina	FWD	1596	85	115	07.04-09.12	■
1.6 Ti (SIDA)		Gasolina	FWD	1596	85	115	07.04-09.12	■
1.8 (Q7DA)		Gasolina	FWD	1798	92	125	03.06-09.12	■
1.8 (QQDA)		Gasolina	FWD	1798	92	125	03.06-09.12	■
1.8 (QQDB)		Gasolina	FWD	1798	92	125	03.06-09.12	■
2.0 (AODA)		Gasolina	FWD	1999	107	145	07.04-09.12	■
2.0 (AODB)		Gasolina	FWD	1999	107	145	07.04-09.12	■
2.0 (AODE)		Gasolina	FWD	1999	107	145	07.04-09.12	■
1.8 Flexifuel (Q7DA)	-01/08	Gasol./Etanol	FWD	1798	92	125	01.06-09.12	■

LISTA DE APLICACIONES - BUYERS GUIDE

1.8 Flexifuel (QQDA)	-01/08	Gasol./Etanol	FWD	1798	92	125	01.06-09.12	■
1.8 Flexifuel (QQDB)	-01/08	Gasol./Etanol	FWD	1798	92	125	01.06-09.12	■
1.8 Flexifuel (QQDD)		Gasol./Etanol	FWD	1798	96	131	12.05-01.08	■
1.6 TDCi (GPDA)	-01/08	Diesel	FWD	1560	66	90	01.05-09.12	■
1.6 TDCi (GPDB)	-01/08	Diesel	FWD	1560	66	90	01.05-09.12	■
1.6 TDCi (GPDC)	-01/08	Diesel	FWD	1560	66	90	01.05-09.12	■
1.6 TDCi (HHDA)	-01/08	Diesel	FWD	1560	66	90	01.05-09.12	■
1.6 TDCi (HHDB)	-01/08	Diesel	FWD	1560	66	90	01.05-09.12	■
1.6 TDCi (G8DA)		Diesel	FWD	1560	80	109	07.04-09.12	■
1.6 TDCi (G8DB)		Diesel	FWD	1560	80	109	07.04-09.12	■
1.6 TDCi (G8DD)		Diesel	FWD	1560	80	109	07.04-09.12	■
1.6 TDCi (G8DE)		Diesel	FWD	1560	80	109	07.04-09.12	■
1.6 TDCi (G8DF)		Diesel	FWD	1560	80	109	07.04-09.12	■
1.8 TDCi (KKDA)	-01/08	Diesel	FWD	1753	85	115	01.05-09.12	■
2.0 TDCi (IXDA)		Diesel	FWD	1997	81	110	02.08-07.11	■
2.0 TDCi (G6DA)		Diesel	FWD	1997	100	136	07.04-09.12	■
2.0 TDCi (G6DB)		Diesel	FWD	1997	100	136	07.04-09.12	■
2.0 TDCi (G6DD)		Diesel	FWD	1997	100	136	07.04-09.12	■
2.0 TDCi (G6DG)		Diesel	FWD	1997	100	136	07.04-09.12	■
FOCUS II (DB_, FCH, DH) 04.05-					Saloon (Compact car-C Segment)			
1.4 (ASDA)		Gasolina	FWD	1388	59	80	04.05-09.12	■
1.4 (ASDB)		Gasolina	FWD	1388	59	80	04.05-09.12	■
1.6 (HWDA)		Gasolina	FWD	1596	74	100	04.05-09.12	■
1.6 (HWDB)		Gasolina	FWD	1596	74	100	04.05-09.12	■
1.6 (SHDA)		Gasolina	FWD	1596	74	100	04.05-09.12	■
1.6 (SHDB)		Gasolina	FWD	1596	74	100	04.05-09.12	■
1.6 (SHDC)		Gasolina	FWD	1596	74	100	04.05-09.12	■
1.6		Gasolina	FWD	1596	81	110	03.10-	■
1.6 Ti (HXDA)		Gasolina	FWD	1596	85	115	04.05-09.12	■
1.6 Ti (HXDB)		Gasolina	FWD	1596	85	115	04.05-09.12	■
1.6 Ti (SIDA)		Gasolina	FWD	1596	85	115	04.05-09.12	■
1.8 (Q7DA)		Gasolina	FWD	1798	92	125	03.06-09.12	■
1.8 (QQDA)		Gasolina	FWD	1798	92	125	03.06-09.12	■
1.8 (QQDB)		Gasolina	FWD	1798	92	125	03.06-09.12	■
2.0 (AODA)		Gasolina	FWD	1999	107	145	04.05-07.11	■
2.0 (AODB)		Gasolina	FWD	1999	107	145	04.05-07.11	■
2.0 (AODE)		Gasolina	FWD	1999	107	145	04.05-07.11	■
2.0 (SYDA)		Gasolina	FWD	1999	107	145	04.05-07.11	■
1.6 Flex		Gasol./Etanol	FWD	1596	85	116	01.10-09.13	■
1.8 Flexifuel (Q7DA)	-01/08	Gasol./Etanol	FWD	1798	92	125	06.06-07.11	■
1.8 Flexifuel (QQDA)	-01/08	Gasol./Etanol	FWD	1798	92	125	06.06-07.11	■
1.8 Flexifuel (QQDB)	-01/08	Gasol./Etanol	FWD	1798	92	125	06.06-07.11	■
1.8 Flexifuel		Gasol./Etanol	FWD	1798	96	131	12.05-01.08	■
1.6 TDCi (GPDA)	-01/08	Diesel	FWD	1560	66	90	04.05-09.12	■
1.6 TDCi (GPDB)	-01/08	Diesel	FWD	1560	66	90	04.05-09.12	■
1.6 TDCi (GPDC)	-01/08	Diesel	FWD	1560	66	90	04.05-09.12	■
1.6 TDCi (HHDA)	-01/08	Diesel	FWD	1560	66	90	04.05-09.12	■

LISTA DE APLICACIONES - BUYERS GUIDE

1.6 TDCi (HHDB)	-01/08	Diesel	FWD	1560	66	90	04.05-09.12	■
1.6 TDCi (G8DA)	-01/08	Diesel	FWD	1560	80	109	04.05-09.12	■
1.6 TDCi (G8DB)	-01/08	Diesel	FWD	1560	80	109	04.05-09.12	■
1.6 TDCi (G8DD)	-01/08	Diesel	FWD	1560	80	109	04.05-09.12	■
1.6 TDCi (G8DE)	-01/08	Diesel	FWD	1560	80	109	04.05-09.12	■
1.6 TDCi (G8DF)	-01/08	Diesel	FWD	1560	80	109	04.05-09.12	■
1.8 TDCi (KKDA)	-01/08	Diesel	FWD	1753	85	115	04.05-09.12	■
2.0 TDCi (IXDA)		Diesel	FWD	1997	81	110	02.08-07.11	■
2.0 TDCi (G6DA)		Diesel	FWD	1997	100	136	04.05-09.12	■
2.0 TDCi (G6DB)		Diesel	FWD	1997	100	136	04.05-09.12	■
2.0 TDCi (G6DD)		Diesel	FWD	1997	100	136	04.05-09.12	■
2.0 TDCi (G6DG)		Diesel	FWD	1997	100	136	04.05-09.12	■
FOCUS II Turnier (DA_, FFS, DS) 07.04-09.12						Estate (Compact car-C Segment)		
1.4 (ASDA)		Gasolina	FWD	1388	59	80	07.04-09.12	■
1.4 (ASDB)		Gasolina	FWD	1388	59	80	07.04-09.12	■
1.6 (HWDA)		Gasolina	FWD	1596	74	100	07.04-07.11	■
1.6 (HWDB)		Gasolina	FWD	1596	74	100	07.04-07.11	■
1.6 (SHDA)		Gasolina	FWD	1596	74	100	07.04-07.11	■
1.6 (SHDB)		Gasolina	FWD	1596	74	100	07.04-07.11	■
1.6 (SHDC)		Gasolina	FWD	1596	74	100	07.04-07.11	■
1.6 Ti (HXDA)		Gasolina	FWD	1596	85	115	07.04-09.12	■
1.6 Ti (HXDB)		Gasolina	FWD	1596	85	115	07.04-09.12	■
1.6 Ti (SIDA)		Gasolina	FWD	1596	85	115	07.04-09.12	■
1.8 (Q7DA)		Gasolina	FWD	1798	92	125	03.06-09.12	■
1.8 (QQDA)		Gasolina	FWD	1798	92	125	03.06-09.12	■
1.8 (QQDB)		Gasolina	FWD	1798	92	125	03.06-09.12	■
1.8 Flexifuel		Gasolina	FWD	1798	97	132	12.05-01.08	■
2.0 (AODA)		Gasolina	FWD	1999	107	145	07.04-09.12	■
2.0 (AODB)		Gasolina	FWD	1999	107	145	07.04-09.12	■
2.0 (AODE)		Gasolina	FWD	1999	107	145	07.04-09.12	■
2.0 (SYDA)		Gasolina	FWD	1999	107	145	07.04-09.12	■
1.8 Flexifuel (Q7DA)	-01/08	Gasol./Etanol	FWD	1798	92	125	01.06-09.12	■
1.8 Flexifuel (QQDA)	-01/08	Gasol./Etanol	FWD	1798	92	125	01.06-09.12	■
1.8 Flexifuel (QQDB)	-01/08	Gasol./Etanol	FWD	1798	92	125	01.06-09.12	■
1.6 TDCi (GPDA)		Diesel	FWD	1560	66	90	07.04-09.12	■
1.6 TDCi (GPDB)		Diesel	FWD	1560	66	90	07.04-09.12	■
1.6 TDCi (GPDC)		Diesel	FWD	1560	66	90	07.04-09.12	■
1.6 TDCi (HHDA)		Diesel	FWD	1560	66	90	07.04-09.12	■
1.6 TDCi (HHDB)		Diesel	FWD	1560	66	90	07.04-09.12	■
1.6 TDCi (G8DA)		Diesel	FWD	1560	80	109	07.04-09.12	■
1.6 TDCi (G8DB)		Diesel	FWD	1560	80	109	07.04-09.12	■
1.6 TDCi (G8DD)		Diesel	FWD	1560	80	109	07.04-09.12	■
1.6 TDCi (G8DE)		Diesel	FWD	1560	80	109	07.04-09.12	■
1.6 TDCi (G8DF)		Diesel	FWD	1560	80	109	07.04-09.12	■
1.8 TDCi (KKDA)	04/05-	Diesel	FWD	1753	85	115	07.04-09.12	■
2.0 TDCi (IXDA)		Diesel	FWD	1997	81	110	02.08-07.11	■
2.0 TDCi (G6DA)		Diesel	FWD	1997	100	136	07.04-09.12	■
2.0 TDCi (G6DB)		Diesel	FWD	1997	100	136	07.04-09.12	■
2.0 TDCi (G6DD)		Diesel	FWD	1997	100	136	07.04-09.12	■
2.0 TDCi (G6DG)		Diesel	FWD	1997	100	136	07.04-09.12	■

LISTA DE APLICACIONES - BUYERS GUIDE

FOCUS C-MAX (DM2) 10.03-03.07					MPV (Compact MPV-M1 Segment)			
1.6 (HWDA)		Gasolina	FWD	1596	74	100	10.03-03.07	■
1.6 (HWDB)		Gasolina	FWD	1596	74	100	10.03-03.07	■
1.6 (SHDA)		Gasolina	FWD	1596	74	100	10.03-03.07	■
1.6 (SHDB)		Gasolina	FWD	1596	74	100	10.03-03.07	■
1.6 (SHDC)		Gasolina	FWD	1596	74	100	10.03-03.07	■
1.6 Ti (HXDA)		Gasolina	FWD	1596	85	115	08.04-03.07	■
1.6 Ti (SIDA)		Gasolina	FWD	1596	85	115	08.04-03.07	■
1.8 (CSDA)		Gasolina	FWD	1798	88	120	10.03-03.07	■
1.8 (CSDB)		Gasolina	FWD	1798	88	120	10.03-03.07	■
1.8 (QQDC)		Gasolina	FWD	1798	90	122	09.05-03.07	■
1.8 (Q7DA)		Gasolina	FWD	1798	92	125	04.04-03.07	■
1.8 (QQDA)		Gasolina	FWD	1798	92	125	04.04-03.07	■
1.8 (QQDB)		Gasolina	FWD	1798	92	125	04.04-03.07	■
1.8 Flexifuel (Q7DA)		Gasol./Etanol	FWD	1798	92	125	01.06-03.07	■
1.6 TDCi (HHDA)		Diesel	FWD	1560	66	90	02.05-03.07	■
1.6 TDCi (HHDB)		Diesel	FWD	1560	66	90	02.05-03.07	■
1.6 TDCi (G8DA)		Diesel	FWD	1560	80	109	10.03-03.07	■
1.6 TDCi (G8DB)		Diesel	FWD	1560	80	109	10.03-03.07	■
1.6 TDCi (G8DD)		Diesel	FWD	1560	80	109	10.03-03.07	■
1.6 TDCi (G8DE)		Diesel	FWD	1560	80	109	10.03-03.07	■
1.6 TDCi (G8DF)		Diesel	FWD	1560	80	109	10.03-03.07	■
FORD (CHANGAN)								
FOCUS (CD5) 09.05-12.11					Hatchback (Compact car-C Segment)			
1.8		Gasolina	FWD	1798	91	122	08.06-12.11	■
2.0		Gasolina	FWD	1999	104	140	08.06-12.11	■
FOCUS (CD4) 09.05-12.11					Saloon (Compact car-C Segment)			
1.8		Gasolina	FWD	1798	91	124	09.05-12.11	■
2.0		Gasolina	FWD	1999	104	140	09.05-12.11	■
MG (SAIC)								
550 10.08-					Saloon ()			
1.8 (18K4G)		Gasolina	FWD	1796	118	160	10.08-	■
VOLVO								
C30 (533) 09.06-12.13					Hatchback (Compact car-C Segment)			
1.6 (B 4164 S3)		Gasolina	FWD	1596	74	100	10.06-12.12	■
1.8 (B 4184 S11)		Gasolina	FWD	1798	92	125	10.06-12.12	■
2.0 (B 4204 S3)		Gasolina	FWD	1999	107	145	10.06-12.12	■
T5 (B 5254 T3)		Gasolina	FWD	2521	162	220	10.06-12.12	■
T5		Gasolina	FWD	2521	184	250	10.07-12.13	■
1.8 Flexfuel (B 4184 S8)		Gasol./Etanol	FWD	1798	92	125	01.07-12.12	■
2.0 FlexFuel (B 4204 S4)		Gasol./Etanol	FWD	1999	107	146	01.10-12.12	■
Electric (E400V1)		Eléctrico	FWD		82	112	12.10-12.12	■
Electric (E400V1)		Eléctrico	FWD		89	120	12.10-12.12	■
1.6 D (D 4164 T)		Diesel	FWD	1560	80	109	10.06-12.12	■
D2 (D 4162 T)	Rim 15	Diesel	FWD	1560	84	115	10.10-12.12	■
D3 (D 5204 T5)	Rim 15	Diesel	FWD	1984	110	150	10.10-12.12	■
D4 (D 5204 T)	Rim 15	Diesel	FWD	1984	130	177	10.10-12.12	■

LISTA DE APLICACIONES - BUYERS GUIDE

C70 II (542) 03.06-12.13					Convertible (Pony car-F Segment)			
2.4 (B 5244 S5)	Rim 15	Gasolina	FWD	2435	103	140	03.06-10.09	■
2.4 i (B 5244 S4)	Rim 15	Gasolina	FWD	2435	125	170	03.06-10.09	■
T5 (B 5254 T3)	Rim 15	Gasolina	FWD	2521	162	220	03.06-02.07	■
T5 (B 5254 T7)	Rim 15	Gasolina	FWD	2521	169	230	03.07-06.13	■
D3 (D 5204 T5)	Rim 15	Diesel	FWD	1984	110	150	10.10-06.13	■
D4 (D 5204 T)	Rim 15	Diesel	FWD	1984	130	177	10.10-06.13	■
2.0 D (D 4204 T)	Rim 15	Diesel	FWD	1998	100	136	01.08-10.09	■
2.4 D (D 5244 T9)		Diesel	FWD	2400	120	163	03.07-06.13	■
D5 (D 5244 T13)		Diesel	FWD	2400	132	180	03.06-06.13	■
D5 (D 5244 T8)		Diesel	FWD	2400	132	180	03.06-06.13	■
S40 II (544) 12.03-12.12					Saloon (Compact executive car-D Segment)			
1.6 (B 4164 S3)	Rim 15	Gasolina	FWD	1596	74	101	01.05-12.12	■
1.8 (B 4184 S11)	Rim 15	Gasolina	FWD	1798	92	125	04.04-12.10	■
T5 (B 5254 T3)	Rim 15	Gasolina	FWD	2521	162	220	01.04-12.07	■
T5 AWD (B 5254 T3)	Rim 15	Gasolina	4WD	2521	162	220	04.04-12.07	■
1.8 Flexfuel (B 4184 S8)	Rim 15	Gasol./Etanol	FWD	1798	92	125	01.06-12.10	■
2.0 F (B 4204 S4)		Gasol./Etanol	FWD	1999	107	146	10.09-12.12	■
1.6 D (D 4164 T)	Rim 16	Diesel	FWD	1560	81	110	01.05-12.12	■
D2 (D 4162 T)	Rim 15	Diesel	FWD	1560	84	115	10.10-12.12	■
D3 (D 5204 T5)	Rim 15	Diesel	FWD	1984	110	150	10.10-12.12	■
D4 (D 5204 T)	Rim 15	Diesel	FWD	1984	130	177	10.10-12.12	■
D4 (D 4204 T2)		Diesel	FWD	1998	96	131	07.05-12.06	■
2.0 CDI (D 4204 T2)		Diesel	FWD	1998	98	133	07.05-12.06	■
2.4 CDI (D 5244 T9)		Diesel	FWD	2400	120	163	03.07-12.10	■
V50 (545) 12.03-12.12					Estate (Luxury car-F Segment)			
1.8 Bifuel		Gasol./Gas (LPG)	FWD	1798	93	126	01.09-09.10	■
2.0 FlexFuel (B 4204 S4)		Gasol./Etanol	FWD	1999	107	146	01.10-12.12	■
1.6 D (D 4164 T)		Diesel	FWD	1560	80	109	03.05-12.12	■
D2 (D 4162 T)		Diesel	FWD	1560	84	114	01.10-12.12	■
2.0 D4 (D 4204 T2)		Diesel	FWD	1998	96	131	07.05-12.06	■
2.0 CDI (D 4204 T2)		Diesel	FWD	1998	98	133	12.03-12.06	■