

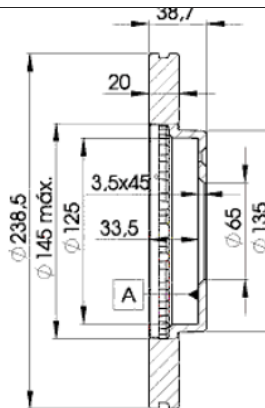
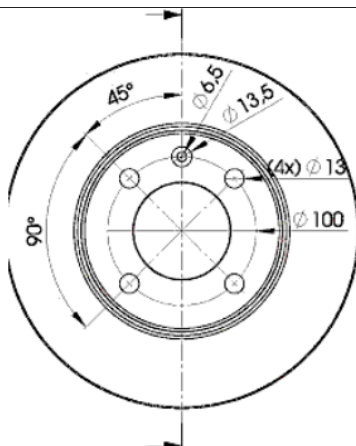
# LISTA DE APLICACIONES - BUYERS GUIDE

## 78BD3975-2



Weight: 8.020

O.E.M.	MAKE
321 615 301 A	VW
321 615 301 B	VW
321 615 301 C	VW
321 698 301 C	SEAT
6N0 615 301 G	VW
841 615 301	VW



## 78BD3975-2

E1 90R-02C0452/0079



Ø239x20x38.7

MAKE
AUDI
SEAT
VW



Trac.	CC	Kw	CV
-------	----	----	----



Front / Rear

### AUDI

#### 80 III B2 / 4000 (811, 813, 814, 819, 853) 08.78-03.87

#### Saloon (Compact executive car-D Segment)

1.8 (DS)	Gasolina	FWD	1781	66	90	01.83-08.86	■
1.8 (JV)	Gasolina	FWD	1781	66	90	01.83-08.86	■
1.8 (JN)	Gasolina	FWD	1781	68	93	08.83-08.86	■
1.8 GTE (PV)	Gasolina	FWD	1781	81	110	08.85-07.86	■
1.8 GTE (DZ)	Gasolina	FWD	1781	82	112	10.84-08.86	■
1.8 GTE (MU)	Gasolina	FWD	1781	82	112	10.84-08.86	■

#### COUPE B2 (81, 855, 856) 07.80-10.88

#### Coupe (Compact executive car-D Segment)

1.8 GT (SF)	Gasolina	FWD	1781	65	88	04.86-10.88	■
1.8 GT (DS)	Gasolina	FWD	1781	66	90	09.82-10.88	■
1.8 GT (JV)	Gasolina	FWD	1781	66	90	09.82-10.88	■
1.8 GT (JN)	Gasolina	FWD	1781	68	93	01.85-07.88	■
1.8 GT (PV)	Gasolina	FWD	1781	79	107	08.86-10.87	■
1.8 GT (DZ)	Gasolina	FWD	1781	82	112	08.86-10.88	■
1.8 GT quattro (DZ)	Gasolina	4WD	1781	82	112	12.84-10.88	■
2.1 GT (WE)	Gasolina	FWD	2144	79	107	01.81-07.83	■
2.1 GT (KE)	Gasolina	FWD	2144	96	131	09.82-10.87	■
2.1 GT (KL)	Gasolina	FWD	2144	96	131	09.82-10.87	■
2.2 GT (KX)	Gasolina	FWD	2226	85	115	07.81-10.87	■

### SEAT

#### CORDOBA (6K1, 6K2) 02.93-12.02

#### Saloon (Supermini car-B Segment)

1.0 (AST)	Gasolina	FWD	999	51	69	06.01-08.02	■
1.0 (AVZ)	Gasolina	FWD	999	51	69	06.01-08.02	■

# LISTA DE APLICACIONES - BUYERS GUIDE

1.4 16V (APE)		Gasolina	FWD	1390	55	75	05.00-10.02	■
1.4 16V (AUA)		Gasolina	FWD	1390	55	75	05.00-10.02	■
1.4 i 16V (AFH)		Gasolina	FWD	1390	74	101	09.96-10.02	■
1.4 i 16V (AQQ)		Gasolina	FWD	1390	74	101	09.96-10.02	■
1.4 i 16V (AUB)		Gasolina	FWD	1390	74	101	09.96-10.02	■
1.8 i (ABS)		Gasolina	FWD	1781	66	90	02.93-09.02	■
1.8 i (ACC)		Gasolina	FWD	1781	66	90	02.93-09.02	■
1.8 i (ADZ)		Gasolina	FWD	1781	66	90	02.93-09.02	■
1.9 D (1Y)		Diesel	FWD	1896	47	64	01.96-08.96	■
1.9 D (1Y)		Diesel	FWD	1896	50	68	02.93-08.96	■
1.9 SDI (AGP)		Diesel	FWD	1896	50	68	06.99-10.02	■
1.9 SDI (AQM)		Diesel	FWD	1896	50	68	06.99-10.02	■
1.9 TD (AAZ)		Diesel	FWD	1896	55	75	02.93-08.96	■
1.9 TDI (1Z)		Diesel	FWD	1896	66	90	08.96-10.02	■
1.9 TDI (AGR)		Diesel	FWD	1896	66	90	08.96-10.02	■
1.9 TDI (AHU)		Diesel	FWD	1896	66	90	08.96-10.02	■
1.9 TDI (ALH)		Diesel	FWD	1896	66	90	08.96-10.02	■
<b>CORDOBA II (6K2) 06.99-10.02</b>					<b>Saloon (Supermini car-B Segment)</b>			
1.4	10/99-	Gasolina	FWD	1390	44	60	06.99-10.02	■
1.4 16V		Gasolina	FWD	1390	74	100	02.00-10.02	■
<b>CORDOBA II Vario (6K5) 06.99-12.02</b>					<b>Estate (Supermini car-B Segment)</b>			
1.4	10/99-, -11/02	Gasolina	FWD	1390	44	60	06.99-12.02	■
1.4		Gasolina	FWD	1390	74	101	02.00-12.02	■
1.6		Gasolina	FWD	1598	55	75	06.99-12.02	■
<b>CORDOBA Vario (6K5) 07.96-12.02</b>					<b>Estate (Supermini car-B Segment)</b>			
1.4 i (AEX)		Gasolina	FWD	1389	44	60	09.96-12.02	■
1.4 i (AKK)		Gasolina	FWD	1389	44	60	09.96-12.02	■
1.4 i (AKV)		Gasolina	FWD	1389	44	60	09.96-12.02	■
1.4 i (ANW)		Gasolina	FWD	1389	44	60	09.96-12.02	■
1.4 i (APQ)		Gasolina	FWD	1389	44	60	09.96-12.02	■
1.4 i (AUD)		Gasolina	FWD	1389	44	60	09.96-12.02	■
1.4		Gasolina	FWD	1390	40	54	12.97-04.99	■
1.4 16V (APE)	-11/02	Gasolina	FWD	1390	55	75	06.99-12.02	■
1.4 16V (AUA)	-11/02	Gasolina	FWD	1390	55	75	06.99-12.02	■
1.9 SDI (AGP)	10/99-, -11/02	Diesel	FWD	1896	50	68	06.99-12.02	■
1.9 SDI (AQM)	10/99-, -11/02	Diesel	FWD	1896	50	68	06.99-12.02	■
<b>IBIZA II (6K1) 03.93-05.02</b>					<b>Hatchback (Supermini car-B Segment)</b>			
1.0		Gasolina	FWD	999	37	50	08.99-02.02	■
1.0		Gasolina	FWD	999	50	68	06.00-02.02	■
1.0 16V (AST)		Gasolina	FWD	999	51	69	10.99-05.02	■
1.0 16V (AVZ)		Gasolina	FWD	999	51	69	10.99-05.02	■
1.4		Gasolina	FWD	1390	44	60	08.99-02.02	■
1.4 16V (APE)		Gasolina	FWD	1390	55	75	05.00-02.02	■
1.4 16V (AUA)		Gasolina	FWD	1390	55	75	05.00-02.02	■
1.6 i (1F)		Gasolina	FWD	1595	55	75	09.94-06.99	■
1.6		Gasolina	FWD	1595	74	101	08.99-02.02	■
1.6		Gasolina	FWD	1598	55	75	08.99-02.02	■
1.6 i (ABU)		Gasolina	FWD	1598	55	75	03.93-02.02	■
1.6 i (AEE)		Gasolina	FWD	1598	55	75	03.93-02.02	■
1.6 i (ALM)		Gasolina	FWD	1598	55	75	03.93-02.02	■

# LISTA DE APLICACIONES - BUYERS GUIDE

1.8 i (ABS)		Gasolina	FWD	1781	66	90	03.93-08.99	■
1.8 i (ACC)		Gasolina	FWD	1781	66	90	03.93-08.99	■
1.8 i (ADZ)		Gasolina	FWD	1781	66	90	03.93-08.99	■
1.9 D (1Y)		Diesel	FWD	1896	47	64	04.93-06.99	■
1.9 D		Diesel	FWD	1896	50	68	10.94-08.96	■
1.9 SDI (AGP)		Diesel	FWD	1896	50	68	08.99-02.02	■
1.9 SDI (AQM)		Diesel	FWD	1896	50	68	08.99-02.02	■
1.9 TD (AAZ)		Diesel	FWD	1896	55	75	03.93-08.96	■
1.9 TDI (1Z)		Diesel	FWD	1896	66	90	08.96-02.02	■
1.9 TDI (AGR)		Diesel	FWD	1896	66	90	08.96-02.02	■
1.9 TDI (AHU)		Diesel	FWD	1896	66	90	08.96-02.02	■
1.9 TDI (ALH)		Diesel	FWD	1896	66	90	08.96-02.02	■
1.9 TDI		Diesel	RWD	1896	66	90	08.99-02.02	■
1.9 TDI (AFN)		Diesel	FWD	1896	81	110	02.97-02.02	■
1.9 TDI (ASV)		Diesel	FWD	1896	81	110	02.97-02.02	■
<b>IBIZA III (6L1) 02.02-11.09</b>					<b>Hatchback (Supermini car-B Segment)</b>			
1.4 16V (AUB)	-05/02	Gasolina	FWD	1390	74	100	02.02-11.09	■
1.4 16V (BBZ)	-05/02	Gasolina	FWD	1390	74	100	02.02-11.09	■
<b>VW</b>								
<b>GOL II 06.94-06.13</b>					<b>Hatchback (Supermini car-B Segment)</b>			
1.6 (BW1, BX1) (BWX)		Gasolina	FWD	1595	73	99	12.99-06.10	■
<b>GOL III 09.98-09.06</b>					<b>Hatchback (Supermini car-B Segment)</b>			
1.6 (UNF)		Gasolina	FWD	1595	68	92	01.02-08.06	■
1.6 Álcool		Etanol	FWD	1595	73	99	09.99-08.05	■
<b>GOL IV 05.03-12.14</b>					<b>Hatchback (Supermini car-B Segment)</b>			
1.6 (UNF)		Gasolina	FWD	1595	68	92	10.05-12.13	■
1.6 TotalFlex (UNF)		Gasol./Etanol	FWD	1595	68	92	09.05-05.08	■
<b>GOLF I / RABBIT (155) 01.79-08.93</b>					<b>Convertible (Compact car-C Segment)</b>			
1.6 (EG)		Gasolina	FWD	1588	81	110	08.79-07.82	■
1.8 (EX)		Gasolina	FWD	1781	66	90	08.83-09.92	■
1.8 (JH)		Gasolina	FWD	1781	70	95	08.83-04.93	■
1.8 (2H)		Gasolina	FWD	1781	72	98	08.89-03.93	■
1.8 (DX)		Gasolina	FWD	1781	82	112	08.82-12.89	■
1.8 (EV)		Gasolina	FWD	1781	82	112	08.82-12.89	■
1.8 (KT)		Gasolina	FWD	1781	82	112	08.82-12.89	■
1.8 (PB)		Gasolina	FWD	1781	82	112	08.82-12.89	■
1.8 (DX)		Gasolina	FWD	1781	82	111	08.83-12.92	■
<b>GOLF I / RABBIT (17) 04.74-12.85</b>					<b>Hatchback (Compact car-C Segment)</b>			
1.6 GTI (EG)		Gasolina	FWD	1588	81	110	08.76-07.82	■
1.8 GTI (DX)		Gasolina	FWD	1781	82	112	08.82-12.83	■
1.8 GTI (JJ)		Gasolina	FWD	1781	82	112	08.82-12.83	■
<b>GOLF II (19E, 1G1) 08.83-12.92</b>					<b>Hatchback (Compact car-C Segment)</b>			
1.8 (RH)		Gasolina	FWD	1781	62	84	08.86-01.90	■
1.8 (GU)		Gasolina	FWD	1781	66	90	08.84-10.91	■
1.8 (GX)		Gasolina	FWD	1781	66	90	08.84-10.91	■
1.8 (HV)		Gasolina	FWD	1781	66	90	08.84-10.91	■
1.8 i Cat (GX)		Gasolina	FWD	1781	66	90	08.87-10.91	■

# LISTA DE APLICACIONES - BUYERS GUIDE

1.8 i Cat (RP)		Gasolina	FWD	1781	66	90	08.87-10.91	■
1.8 GTI (HT)		Gasolina	FWD	1781	77	105	01.85-07.85	■
1.8 GTI (RV)		Gasolina	FWD	1781	77	105	01.85-07.85	■
1.8 GTI (RD)		Gasolina	FWD	1781	79	107	08.85-10.87	■
1.8 GTI Cat (PF)		Gasolina	FWD	1781	79	107	01.87-10.91	■
1.8 GTI (DX)		Gasolina	FWD	1781	82	112	08.83-10.91	■
1.8 GTI (EV)		Gasolina	FWD	1781	82	112	08.83-10.91	■
1.8 GTI (GZ)		Gasolina	FWD	1781	82	112	08.83-10.91	■
1.8 GTI (PB)		Gasolina	FWD	1781	82	112	08.83-10.91	■
1.8 GTI 16V (PL)	-10/88	Gasolina	FWD	1781	95	129	02.86-10.91	■
1.8 GTI 16V (KR)		Gasolina	FWD	1781	100	136	08.86-07.88	■
1.8 GTI 16V (KR)	-10/88	Gasolina	FWD	1781	102	139	02.86-06.90	■
<b>GOLF III (1H1) 10.89-11.00</b>					<b>Hatchback (Compact car-C Segment)</b>			
1.0	09/96-	Gasolina	FWD	997	37	50	10.94-09.96	■
1.4 (ABD)	09/96-	Gasolina	FWD	1390	40	55	11.91-08.97	■
1.4 (AEX)	09/96-	Gasolina	FWD	1390	40	55	11.91-08.97	■
1.4 (ABD)	09/96-	Gasolina	FWD	1390	44	60	10.91-08.97	■
1.4 (AEX)	09/96-	Gasolina	FWD	1390	44	60	10.91-08.97	■
1.6 (ABU)	07/95-, vehicles without ABS	Gasolina	FWD	1598	55	75	09.92-08.97	■
1.6 (AEA)	07/95-, vehicles without ABS	Gasolina	FWD	1598	55	75	09.92-08.97	■
1.6 (AEE)	07/95-, vehicles without ABS	Gasolina	FWD	1598	55	75	09.92-08.97	■
1.9 SDI (AEY)	10/96-, vehicles with ABS	Diesel	FWD	1896	47	64	07.95-08.97	■
1.9 TD, GTD (AAZ)	10/96-, vehicles with ABS	Diesel	FWD	1896	55	75	11.91-08.97	■
<b>GOLF III Van (1H5) 08.91-12.99</b>					<b>Estate Van (Compact car-C Segment)</b>			
1.4 (ABD)		Gasolina	FWD	1390	44	60	05.93-07.95	■
1.4 (AEX)		Gasolina	FWD	1390	44	60	05.93-07.95	■
1.9 (1Y)		Diesel	FWD	1896	47	64	08.93-02.99	■
1.9 SDI (AEY)		Diesel	FWD	1896	47	64	07.95-02.99	■
<b>GOLF III Van (1H1) 08.91-12.97</b>					<b>Hatchback Van (Compact car-C Segment)</b>			
1.4 (ABD)		Gasolina	FWD	1390	44	60	08.91-05.96	■
1.4 (AEX)		Gasolina	FWD	1390	44	60	08.91-05.96	■
1.6	vehicles without ABS	Gasolina	FWD	1598	55	75	08.92-09.97	■
1.9 SDI (AEY)		Diesel	FWD	1896	47	64	08.95-09.97	■
<b>GOLF III Variant (1H5) 07.93-04.99</b>					<b>Estate (Compact car-C Segment)</b>			
1.4 (ABD)	vehicles with ABS	Gasolina	FWD	1390	40	55	07.93-04.99	■
1.4 (ABD)	vehicles with ABS	Gasolina	FWD	1390	44	60	07.93-04.99	■
1.4 (AEX)	vehicles with ABS	Gasolina	FWD	1390	44	60	07.93-04.99	■
1.4 (APQ)	vehicles with ABS	Gasolina	FWD	1390	44	60	07.93-04.99	■
1.9 SDI (AEY)	11/96-, vehicles with ABS	Diesel	FWD	1896	47	64	07.95-04.99	■
<b>GOLF II Furgoneta (19E, 1G1) 08.83-07.91</b>					<b>Hatchback Van (Compact car-C Segment)</b>			
1.8 i (RP)		Gasolina	FWD	1781	66	90	08.87-07.91	■
<b>JETTA I / ATLANTIC (16) 08.78-12.87</b>					<b>Saloon (Compact car-C Segment)</b>			
1.6 (FR)		Gasolina	FWD	1588	63	85	08.78-02.84	■
1.6 GLI (EG)		Gasolina	FWD	1588	81	110	08.78-07.82	■
1.6 (EW)		Gasolina	FWD	1595	55	75	08.82-07.83	■
1.8 (DX)		Gasolina	FWD	1781	82	112	08.82-02.84	■
1.8 (JJ)		Gasolina	FWD	1781	82	112	08.82-02.84	■

# LISTA DE APLICACIONES - BUYERS GUIDE

JETTA II (19E, 1G2, 165) 08.83-12.92					Saloon (Compact car-C Segment)			
1.8 (GU)		Gasolina	FWD	1781	66	90	08.84-10.91	■
1.8 (GX)		Gasolina	FWD	1781	66	90	08.84-10.91	■
1.8 (HV)		Gasolina	FWD	1781	66	90	08.84-10.91	■
1.8 Cat (GX)		Gasolina	FWD	1781	66	90	08.87-10.91	■
1.8 Cat (RP)		Gasolina	FWD	1781	66	90	08.87-10.91	■
1.8		Gasolina	FWD	1781	70	95	08.84-07.88	■
1.8 (HT)		Gasolina	FWD	1781	77	105	01.85-12.92	■
1.8 (RV)		Gasolina	FWD	1781	77	105	01.85-12.92	■
1.8 (RD)	vehicles with ABS	Gasolina	FWD	1781	79	107	08.85-10.87	■
1.8 Cat (PF)	vehicles with ABS	Gasolina	FWD	1781	79	107	01.87-10.91	■
1.8 16V (PL)		Gasolina	FWD	1781	95	129	08.86-10.91	■
1.8 16V (KR)		Gasolina	FWD	1781	102	140	06.87-12.89	■
PARATI III Variant / GOL COUNTRY III (5X5) 05.99-					Estate (Large family car-D Segment)			
1.0 (AZP)		Gasolina	FWD	999	56	76	08.02-	■
1.6		Gasolina	FWD	1595	67	91	09.03-	■
1.8 (UDH)		Gasolina	FWD	1781	73	99	08.02-	■
2.0		Gasolina	FWD	1984	82	112	07.03-	■
PASSAT B2 / CARAT / CORSAR / QUANTUM / SANTANA (32B) 09.79-07.89					Hatchback (Large family car-D Segment)			
1.8 (DZ)		Gasolina	FWD	1781	82	112	12.83-03.88	■
1.9 (WN)		Gasolina	FWD	1921	85	115	01.81-07.83	■
2.0 (HP)		Gasolina	FWD	1994	85	115	08.83-03.88	■
2.0 (JS)		Gasolina	FWD	1994	85	115	08.83-03.88	■
2.1 (WE)		Gasolina	FWD	2144	85	115	01.81-12.83	■
2.2 (KX)		Gasolina	FWD	2226	85	115	08.85-03.88	■
2.2 (KV)		Gasolina	FWD	2226	100	136	01.85-03.88	■
PASSAT B2 / CARAT / CORSAR / SANTANA (32B) 05.82-06.89					Saloon (Large family car-D Segment)			
2.0 (HP)		Gasolina	FWD	1994	85	116	08.84-07.85	■
2.0 (JS)		Gasolina	FWD	1994	85	116	08.84-07.85	■
2.2 (KX)		Gasolina	FWD	2226	85	115	01.85-03.88	■
PASSAT B2 Variant / CARAT / CORSAR / QUANTUM (33B) 08.80-06.89					Estate (Large family car-D Segment)			
1.9 (WN)		Gasolina	FWD	1921	85	115	01.81-07.83	■
2.0 (HP)		Gasolina	FWD	1994	85	115	08.83-03.88	■
2.0 (JS)		Gasolina	FWD	1994	85	115	08.83-03.88	■
2.1 (WE)		Gasolina	FWD	2144	85	115	01.81-07.83	■
2.2 (KX)		Gasolina	FWD	2226	85	115	08.85-03.88	■
POLO III (6N1) 10.94-10.99					Hatchback (Supermini car-B Segment)			
1.4 16V (AFK)	-ch 6N-T-W070000	Gasolina	FWD	1390	74	101	10.99-09.01	■
1.4 16V (AQQ)	-ch 6N-T-W070000	Gasolina	FWD	1390	74	101	10.99-09.01	■
1.4 16V (AUB)	-ch 6N-T-W070000	Gasolina	FWD	1390	74	101	10.99-09.01	■
100 1.4 16V (AFH)	-ch 6N-T-W070000	Gasolina	FWD	1390	74	100	04.96-10.99	■
POLO III CLASSIC / DERBY / FLIGHT (6V2) 01.95-11.09					Saloon (Supermini car-B Segment)			
54 1.4 (ANX)		Gasolina	FWD	1390	40	54	01.98-08.99	■
60 1.4 (AEX)	12/97-	Gasolina	FWD	1390	44	60	12.95-09.01	■
60 1.4 (AKK)	12/97-	Gasolina	FWD	1390	44	60	12.95-09.01	■
60 1.4 (AKV)	12/97-	Gasolina	FWD	1390	44	60	12.95-09.01	■
60 1.4 (ANW)	12/97-	Gasolina	FWD	1390	44	60	12.95-09.01	■
60 1.4 (APQ)	12/97-	Gasolina	FWD	1390	44	60	12.95-09.01	■

# LISTA DE APLICACIONES - BUYERS GUIDE

60 1.4 (AUD)	12/97-	Gasolina	FWD	1390	44	60	12.95-09.01	■
75 1.4 16V (APE)		Gasolina	FWD	1390	55	75	10.99-09.01	■
75 1.4 16V (AUA)		Gasolina	FWD	1390	55	75	10.99-09.01	■
1.4		Gasolina	FWD	1390	62	84	05.96-07.02	■
1.6		Gasolina	FWD	1595	65	88	05.96-09.01	■
75 1.6 (AEE)	08/98-	Gasolina	FWD	1598	55	75	11.95-09.01	■
75 1.6 (ALM)	08/98-	Gasolina	FWD	1598	55	75	11.95-09.01	■
90 1.8 (ABS)		Gasolina	FWD	1781	66	90	01.97-09.01	■
90 1.8 (ADD)		Gasolina	FWD	1781	66	90	01.97-09.01	■
90 1.8 (ADZ)		Gasolina	FWD	1781	66	90	01.97-09.01	■
2.0 (ADC)		Gasolina	FWD	1984	85	116	08.99-09.01	■
<b>POLO III Variant (6V5) 04.97-09.01</b>					<b>Estate (Supermini car-B Segment)</b>			
1.4 (AKP)		Gasolina	FWD	1390	40	54	01.98-08.99	■
1.4 (AEX)		Gasolina	FWD	1390	44	60	05.97-09.01	■
1.4 (AKK)		Gasolina	FWD	1390	44	60	05.97-09.01	■
1.4 (AKV)		Gasolina	FWD	1390	44	60	05.97-09.01	■
1.4 (ANW)		Gasolina	FWD	1390	44	60	05.97-09.01	■
1.4 (APQ)		Gasolina	FWD	1390	44	60	05.97-09.01	■
1.4 (AUD)		Gasolina	FWD	1390	44	60	05.97-09.01	■
1.4 16V (APE)		Gasolina	FWD	1390	55	75	10.99-09.01	■
1.4 16V (AUA)		Gasolina	FWD	1390	55	75	10.99-09.01	■
1.6 (AEH)	-12/98	Gasolina	FWD	1595	74	101	05.97-09.01	■
1.6 (AFT)	-12/98	Gasolina	FWD	1595	74	101	05.97-09.01	■
1.6 (AKL)	-12/98	Gasolina	FWD	1595	74	101	05.97-09.01	■
1.6 (APF)	-12/98	Gasolina	FWD	1595	74	101	05.97-09.01	■
1.6 (AUR)	-12/98	Gasolina	FWD	1595	74	101	05.97-09.01	■
1.6 (AEE)	-12/98	Gasolina	FWD	1598	55	75	05.97-09.01	■
1.6 (ALM)	-12/98	Gasolina	FWD	1598	55	75	05.97-09.01	■
1.7 SDI (AKW)		Diesel	FWD	1715	42	57	08.97-09.01	■
1.9 SDI (AEY)		Diesel	FWD	1896	47	64	06.97-09.01	■
1.9 SDI (AGP)		Diesel	FWD	1896	50	68	08.99-09.01	■
1.9 SDI (AQM)		Diesel	FWD	1896	50	68	08.99-09.01	■
1.9 TDI (AGR)		Diesel	FWD	1896	66	90	05.97-09.01	■
1.9 TDI (AHU)		Diesel	FWD	1896	66	90	05.97-09.01	■
1.9 TDI (ALE)		Diesel	FWD	1896	66	90	05.97-09.01	■
1.9 TDI (ALH)		Diesel	FWD	1896	66	90	05.97-09.01	■
<b>SANTANA / QUANTUM (32B) 08.81-12.85</b>					<b>Saloon (Large family car-D Segment)</b>			
1.9 (WN)		Gasolina	FWD	1921	85	115	08.81-07.83	■
2.0 (HP)		Gasolina	FWD	1994	85	115	08.83-12.84	■
2.0 (JS)		Gasolina	FWD	1994	85	115	08.83-12.84	■
2.1 (WE)		Gasolina	FWD	2144	85	115	08.82-12.83	■
<b>SANTANA III 01.91-09.12</b>					<b>Saloon (Large family car-D Segment)</b>			
1.8 (UDB)		Gasolina	FWD	1781	71	97	02.93-09.06	■
<b>SAVEIRO III 02.00-07.10</b>					<b>Pickup (Pick-Up Truck)</b>			
2.0 TSI		Gasolina	FWD	1984	82	112	02.00-08.05	■
<b>SCIROCCO (53) 02.74-07.80</b>					<b>Coupe (Sport compact car-C Segment)</b>			
1.6 (EG)		Gasolina	FWD	1588	81	110	06.76-07.80	■

# LISTA DE APLICACIONES - BUYERS GUIDE

SCIROCCO II (53B) 08.80-07.92					Coupe (Sport compact car-C Segment)			
1.6 (EG)		Gasolina	FWD	1588	81	110	08.80-07.82	■
1.8 (EX)	-07/91	Gasolina	FWD	1781	66	90	08.83-07.92	■
1.8 (JH)		Gasolina	FWD	1781	70	95	11.85-07.92	■
1.8 (DX)		Gasolina	FWD	1781	82	112	08.82-12.89	■
1.8 (EV)		Gasolina	FWD	1781	82	112	08.82-12.89	■
1.8 (JJ)		Gasolina	FWD	1781	82	112	08.82-12.89	■
1.8 (PB)		Gasolina	FWD	1781	82	112	08.82-12.89	■
VENTO / JETTA III (1H2) 11.91-11.00					Saloon (Compact car-C Segment)			
1.9 SDI (AEY)	vehicles with ABS	Diesel	FWD	1896	47	64	04.97-09.98	■
1.9 D (1Y)	-07/96, vehicles with ABS	Diesel	FWD	1896	48	65	11.91-09.98	■