

# LISTA DE APLICACIONES - BUYERS GUIDE

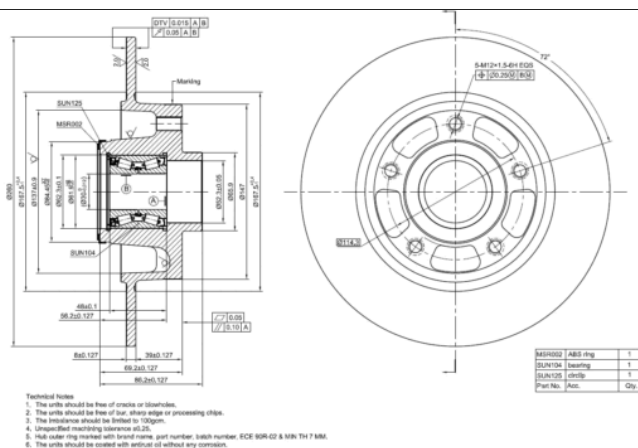
## 78BD4026-1



8 424073 193407

Weight: 6.764

O.E.M.	MAKE
432000010R	RENAULT
432006506R	RENAULT
432007556R	RENAULT
532006506R	RENAULT



## 78BD4026-1

E1 90R-02C0559/0132



Ø260x8x88.2

MAKE  
RENAULT



Trac.	CC	Kw	CV		
					Front / Rear

### RENAULT

#### CLIO IV (BH\_) 11.12-

#### Hatchback (Supermini car-B Segment)

1.6 RS (BHJ4, BHJ6, BHMM) (M5M 400)	Gasolina	FWD	1618	147	200	03.13-08.21	■
1.6 RS (BHJ4, BHJ6, BHMM) (M5M 401)	Gasolina	FWD	1618	147	200	03.13-08.21	■
1.6 RS (BHJ4, BHJ6, BHMM) (M5M 450)	Gasolina	FWD	1618	147	200	03.13-08.21	■
1.6 RS Trophy (BHJ4, BHJ6) (M5M 401)	Gasolina	FWD	1618	162	220	03.15-08.21	■

#### FLUENCE / SYMBOL (L3\_) 02.10-

#### Saloon (Luxury car-F Segment)

1.6 dCi (R9M 402)	Diesel	FWD	1598	96	130	07.14-	■
-------------------	--------	-----	------	----	-----	--------	---

#### GRAND SCÉNIC III (JZ0/1\_) 02.09-

#### MPV (Compact MPV-M1 Segment)

1.2 TCe (JZ11, JZ28) (H5F 400)	Gasolina	FWD	1197	85	116	04.12-09.16	■
1.2 TCe (JZ28) (H5F 408)	Gasolina	FWD	1197	96	131	07.14-09.16	■
1.2 TCe (JZ16) (H5F 404)	Gasolina	FWD	1197	97	132	01.13-09.16	■
1.4 16V (JZ0F) (H4J 700)	Gasolina	FWD	1397	96	131	02.09-09.16	■
1.6 16V (JZ0U) (K4M 858)	Gasolina	FWD	1598	81	109	02.09-09.16	■
2.0 16V (JZ0G) (M4R 711)	Gasolina	FWD	1997	103	140	02.09-09.16	■
1.5 dCi (JZ0A) (K9K 830)	Diesel	FWD	1461	63	86	04.09-09.16	■
1.5 dCi (JZ0B, JZ07) (K9K 832)	Diesel	FWD	1461	78	106	02.09-09.16	■
1.5 dCi (JZ09, JZ0D, JZ10, JZ14, JZ1G, JZ29, JZ2C) (K9K 636)	Diesel	FWD	1461	81	110	04.09-09.16	■
1.5 dCi (JZ09, JZ0D, JZ10, JZ14, JZ1G, JZ29, JZ2C) (K9K 836)	Diesel	FWD	1461	81	110	04.09-09.16	■
1.5 dCi (JZ09, JZ0D, JZ10, JZ14, JZ1G, JZ29, JZ2C) (K9K 837)	Diesel	FWD	1461	81	110	04.09-09.16	■
1.9 dCi (JZ0J, JZ0N, JZ1K, JZ1S) (F9Q 870)	Diesel	FWD	1870	96	131	02.09-09.16	■
1.9 dCi (JZ0J, JZ0N, JZ1K, JZ1S) (F9Q 872)	Diesel	FWD	1870	96	131	02.09-09.16	■

# LISTA DE APLICACIONES - BUYERS GUIDE

MEGANE III (BZ0/1_, B3_) 11.08-					Hatchback (Compact car-C Segment)			
2.0 TCe (F4R 872)		Gasolina	FWD	1998	140	190	06.12-08.15	■
2.0 dCi (BZ0Y) (M9R 615)		Diesel	FWD	1995	110	150	10.10-08.15	■
MEGANE III Grandtour (KZ0/1) 11.08-					Estate (Compact car-C Segment)			
1.2 TCe (KZ16, KZ28) (H5F 404)		Gasolina	FWD	1197	97	132	01.13-01.16	■
1.2 TCe (KZ16, KZ28) (H5F 405)		Gasolina	FWD	1197	97	132	01.13-01.16	■
1.2 TCe (KZ16, KZ28) (H5F 412)		Gasolina	FWD	1197	97	132	01.13-01.16	■
1.2 TCe (KZ2B, KZ11) (H5F 400)		Gasolina	FWD	1198	85	116	03.12-08.15	■
1.2 TCe (KZ2B, KZ11) (H5F 408)		Gasolina	FWD	1198	85	116	03.12-08.15	■
1.4 TCe (KZ0F, KZ1V) (H4J 700)		Gasolina	FWD	1397	96	130	05.09-08.15	■
1.6 16V (KZ0H) (K4M 848)		Gasolina	FWD	1598	74	101	05.09-08.15	■
1.6 16V (KZ0U, KZ1B, KZ1U) (K4M 858)		Gasolina	FWD	1598	81	110	05.09-08.15	■
1.6 16V (KZ0U, KZ1B, KZ1U) (K4M 866)		Gasolina	FWD	1598	81	110	05.09-08.15	■
2.0 CVT (KZ0G, KZ1P) (M4R 711)		Gasolina	FWD	1997	103	140	05.09-08.15	■
2.0 CVT (KZ0G, KZ1P) (M4R 713)		Gasolina	FWD	1997	103	140	05.09-08.15	■
2.0 TCe (KZ0K, KZ1T) (F4R 870)		Gasolina	FWD	1998	132	180	11.08-08.15	■
2.0 TCe (KZ0K, KZ1T) (F4R 872)		Gasolina	FWD	1998	132	180	11.08-08.15	■
2.0 TCe (F4R 872)		Gasolina	FWD	1998	140	190	09.12-08.15	■
2.0 TCe (F4R 874)		Gasolina	FWD	1998	162	220	09.12-01.16	■
1.6 BiFuel (KZ03) (K4M 866)		Gasol./Gas (LPG)	FWD	1598	81	110	11.08-08.15	■
1.5 dCi (K9K 830)		Diesel	FWD	1461	63	86	03.09-08.15	■
1.5 dCi (KZ0C, KZ1A) (K9K 834)		Diesel	FWD	1461	66	90	05.09-08.15	■
1.5 dCi (KZ1G, KZ1W, KZ0R) (K9K 846)		Diesel	FWD	1461	70	95	11.13-08.15	■
1.5 dCi (KZ1M, KZ1W, KZ0R) (K9K 832)		Diesel	FWD	1461	78	106	02.09-08.15	■
1.5 dCi (KZ1M, KZ1W, KZ0R) (K9K 836)		Diesel	FWD	1461	78	106	02.09-08.15	■
1.5 dCi (KZ1M, KZ1W, KZ0R) (K9K 846)		Diesel	FWD	1461	78	106	02.09-08.15	■
1.5 dCi (KZ09, KZ0D, KZ1G, KZ29, KZ14, KZ1W, KZ10, KZ1F,...) (K9K 636)		Diesel	FWD	1461	81	110	02.09-08.15	■
1.5 dCi (KZ09, KZ0D, KZ1G, KZ29, KZ14, KZ1W, KZ10, KZ1F,...) (K9K 836)		Diesel	FWD	1461	81	110	02.09-08.15	■
1.5 dCi (KZ09, KZ0D, KZ1G, KZ29, KZ14, KZ1W, KZ10, KZ1F,...) (K9K 837)		Diesel	FWD	1461	81	110	02.09-08.15	■
1.5 dCi (KZ09, KZ0D, KZ1G, KZ29, KZ14, KZ1W, KZ10, KZ1F,...) (K9K 846)		Diesel	FWD	1461	81	110	02.09-08.15	■
1.6 dCi (KZ00, KZ12, KZ13) (R9M 402)		Diesel	FWD	1598	96	130	04.11-08.15	■
1.6 dCi (KZ00, KZ12, KZ13) (R9M 404)		Diesel	FWD	1598	96	130	04.11-08.15	■
1.6 dCi (KZ00, KZ12, KZ13) (R9M 414)		Diesel	FWD	1598	96	130	04.11-08.15	■
1.9 dCi (KZ0J, KZ0N, KZ1S) (F9Q 870)		Diesel	FWD	1870	96	131	05.09-08.15	■
1.9 dCi (KZ0J, KZ0N, KZ1S) (F9Q 872)		Diesel	FWD	1870	96	131	05.09-08.15	■
2.0 dCi (KZ0Y) (M9R 615)		Diesel	FWD	1995	110	150	10.10-08.15	■
2.0 dCi (KZ0L) (M9R 610)		Diesel	FWD	1995	118	160	04.09-08.15	■
2.0 dCi (M9R 610)		Diesel	FWD	1995	120	163	07.12-08.15	■
MEGANE III CC (EZ0/1_) 06.10-					Convertible (Compact car-C Segment)			
1.2 TCe (EZ16) (H5F 404)		Gasolina	FWD	1197	97	132	01.13-08.15	■
1.2 TCe (H5F 400)		Gasolina	FWD	1198	85	116	09.12-08.15	■
1.4 TCe (EZ0F, EZ1V) (H4J 700)		Gasolina	FWD	1397	96	131	06.10-08.15	■
1.6 16V (EZ0U, EZ1U) (K4M 858)		Gasolina	FWD	1598	81	110	06.10-08.15	■
2.0 CVT (EZ0G, EZ1E, EZ1P) (M4R 711)		Gasolina	FWD	1997	103	140	06.10-08.15	■
2.0 CVT (EZ0G, EZ1E, EZ1P) (M4R 713)		Gasolina	FWD	1997	103	140	06.10-08.15	■
2.0 TCe (EZ1T) (F4R 870)		Gasolina	FWD	1998	132	180	06.10-08.15	■
2.0 TCe (EZ1T) (F4R 872)		Gasolina	FWD	1998	132	180	06.10-08.15	■
2.0 Turbo (F4R 874)		Gasolina	FWD	1998	195	265	10.11-	■

# LISTA DE APLICACIONES - BUYERS GUIDE

1.6 16V Hi-Flex (K4M 866)		Gasol./Etanol	FWD	1598	81	110	06.10-08.15	■
1.5 dCi (EZ0B, EZ07) (K9K 832)		Diesel	FWD	1461	78	106	11.13-08.15	■
1.5 dCi (EZ09, EZ1G, EZ0D, EZ14) (K9K 837)		Diesel	FWD	1461	81	110	06.10-08.15	■
1.6 dCi (EZ00) (R9M 402)		Diesel	FWD	1598	96	130	04.11-08.15	■
1.9 dCi (EZ0J, EZ1S) (F9Q 870)		Diesel	FWD	1870	96	131	06.10-08.15	■
2.0 dCi (EZ0L) (M9R 610)		Diesel	FWD	1995	118	160	06.10-08.15	■
<b>MEGANE III Combi Van (KZ0/1) 01.09-08.15</b>					<b>Estate Van (Compact car-C Segment)</b>			
1.5 dCi (K9K 830)		Diesel	FWD	1461	63	86	03.10-08.15	■
1.5 dCi (KZ1A) (K9K 834)		Diesel	FWD	1461	66	90	03.10-08.15	■
1.5 dCi (K9K 832)		Diesel	FWD	1461	78	106	03.10-08.15	■
1.5 dCi (K9K 836)		Diesel	FWD	1461	81	110	01.09-08.15	■
1.5 dCi (K9K 837)		Diesel	FWD	1461	81	110	01.09-08.15	■
<b>SCÉNIC III (JZ0/1_) 12.08-</b>					<b>MPV (Compact MPV-M1 Segment)</b>			
1.2 TCe (H5F 400)		Gasolina	FWD	1197	85	116	04.12-09.16	■
1.2 TCe (H5F 408)		Gasolina	FWD	1197	96	131	07.14-09.16	■
1.2 TCe (JZ16) (H5F 404)		Gasolina	FWD	1197	97	132	01.13-09.16	■
1.2 TCe (JZ16) (H5F 408)		Gasolina	FWD	1197	97	132	01.13-09.16	■
1.4 16V (JZ0F, JZ1V) (H4J 700)		Gasolina	FWD	1397	96	131	02.09-09.16	■
1.6 16V (JZ0U, JZ1B) (K4M 858)		Gasolina	FWD	1598	81	110	02.09-09.16	■
1.6 16V (JZ0U, JZ1B) (K4M R 858)		Gasolina	FWD	1598	81	110	02.09-09.16	■
2.0 16V (JZ0G, JZ0P, JZ1E, JZ1P) (M4R 710)		Gasolina	FWD	1997	103	140	02.09-09.16	■
2.0 16V (JZ0G, JZ0P, JZ1E, JZ1P) (M4R 711)		Gasolina	FWD	1997	103	140	02.09-09.16	■
2.0 16V (JZ0G, JZ0P, JZ1E, JZ1P) (M4R 713)		Gasolina	FWD	1997	103	140	02.09-09.16	■
1.6 16V Bifuel (K4M 866)		Gasol./Gas (LPG)	FWD	1598	79	107	04.12-12.13	■
1.6 16V Bifuel (K4M 866)		Gasol./Gas (LPG)	FWD	1598	81	110	02.09-09.16	■
1.6 E85 (JZ03, JZ1Y) (K4M 866)		Gasol./Etanol	FWD	1598	81	110	02.09-09.16	■
1.5 dCi (K9K 830)		Diesel	FWD	1461	63	86	04.09-09.16	■
1.5 dCi (JZ02, JZ0R) (K9K 846)		Diesel	FWD	1461	70	95	11.10-09.16	■
1.5 dCi (K9K 832)		Diesel	FWD	1461	78	106	02.09-09.16	■
1.5 dCi (K9K 636)		Diesel	FWD	1461	81	110	04.09-09.16	■
1.5 dCi (K9K 656)		Diesel	FWD	1461	81	110	04.09-09.16	■
1.5 dCi (K9K 657)		Diesel	FWD	1461	81	110	04.09-09.16	■
1.5 dCi (K9K 836)		Diesel	FWD	1461	81	110	04.09-09.16	■
1.5 dCi (K9K 837)		Diesel	FWD	1461	81	110	04.09-09.16	■
1.6 dCi (JZ00, JZ12) (R9M 402)		Diesel	FWD	1598	96	130	04.11-09.16	■
1.6 dCi (JZ00, JZ12) (R9M 404)		Diesel	FWD	1598	96	130	04.11-09.16	■
1.6 dCi (JZ00, JZ12) (R9M 414)		Diesel	FWD	1598	96	130	04.11-09.16	■
1.9 dCi (JZ0J, JZ1J, JZ1K, JZ1S) (F9Q 870)		Diesel	FWD	1870	96	131	02.09-09.16	■
1.9 dCi (JZ0J, JZ1J, JZ1K, JZ1S) (F9Q 872)		Diesel	FWD	1870	96	131	02.09-09.16	■
2.0 dCi (JZ0Y, JZ26) (M9R 615)		Diesel	FWD	1995	110	150	02.09-09.16	■
2.0 dCi (JZ0L) (M9R 610)		Diesel	FWD	1995	118	160	04.09-09.16	■
<b>SCÉNIC IV (J9_) 09.16-</b>					<b>MPV (Compact MPV-M1 Segment)</b>			
1.5 dCi 95 (K9K 646)		Diesel	FWD	1461	70	95	09.16-07.22	■
1.5 dCi 95 (K9K 846)		Diesel	FWD	1461	70	95	09.16-07.22	■
1.5 dCi 110 (K9K 646)		Diesel	FWD	1461	81	110	09.16-07.22	■
1.5 dCi 110 (K9K 647)		Diesel	FWD	1461	81	110	09.16-07.22	■
1.6 dCi 130 (R9M 409)		Diesel	FWD	1598	96	130	09.16-07.22	■
1.6 dCi 160 (R9M 452)		Diesel	FWD	1598	118	160	09.16-07.22	■

# LISTA DE APLICACIONES - BUYERS GUIDE

SCÉNIC III VAN (JZ0/1_) 12.08-					Box Body/MPV (Compact MPV-M1 Segment)			
1.4 TCe (JZ0F, JZ1V)	Gasolina	FWD	1397	96	131	01.13-09.16	■	
1.5 dCi (JZ02)	Diesel	FWD	1461	70	95	01.13-09.16	■	
1.5 dCi (JZ0D, JZ1M, JZ09, JZ14, JZ1G, JZ1W, JZ10)	Diesel	FWD	1461	81	110	04.09-09.16	■	
1.6 dCi (JZ00, JZ12, JZ2A)	Diesel	FWD	1598	96	131	01.13-09.16	■	
1.9 dCi (JZ0J, JZ1J, JZ1K, JZ1S)	Diesel	FWD	1870	96	131	01.13-09.16	■	