

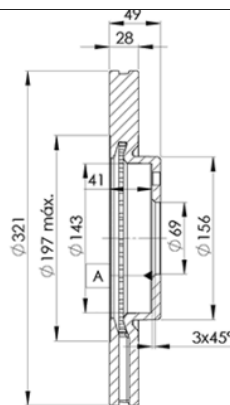
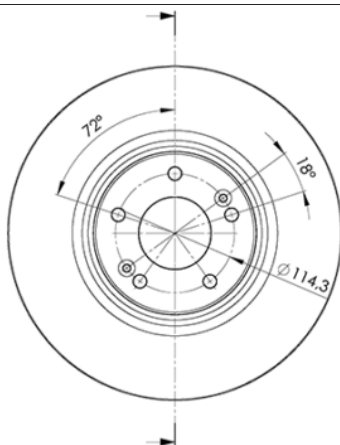
# LISTA DE APLICACIONES - BUYERS GUIDE

## 78BD4051-2



Weight: 21.408

| O.E.M.      | MAKE    |
|-------------|---------|
| 51712-2B700 | HYUNDAI |
| 51712-2P700 | KIA     |



## 78BD4051-2



90R-02C0452/0130



Ø320x28x50

| MAKE             |
|------------------|
| HYUNDAI          |
| HYUNDAI (HUATAI) |
| INOKOM           |
| KIA              |



| Trac. | CC | Kw | CV |
|-------|----|----|----|
|-------|----|----|----|



Front / Rear

### HYUNDAI

#### ix55 / VERACRUZ 09.06-

#### SUV (Compact SUV-J Segment)

|                        |          |     |      |     |     |             |   |
|------------------------|----------|-----|------|-----|-----|-------------|---|
| 3.8 V6 4WD (G6DA)      | Gasolina | 4WD | 3778 | 191 | 260 | 01.07-11.12 | ■ |
| 3.8 V6 (G6DA)          | Gasolina | FWD | 3778 | 194 | 264 | 01.11-11.12 | ■ |
| 3.8 V6 4WD (G6DA)      | Gasolina | 4WD | 3778 | 194 | 264 | 01.11-11.12 | ■ |
| 3.8 V6 4WD (G6DA)      | Gasolina | 4WD | 3778 | 199 | 271 | 01.08-11.12 | ■ |
| 3.0 V6 CRDi 4WD (D6EA) | Diesel   | 4WD | 2959 | 176 | 239 | 09.08-12.11 | ■ |
| 3.0 V6 CRDi 4WD        | Diesel   | 4WD | 2959 | 180 | 245 | 11.08-11.12 | ■ |
| 3.0 V6 CRDi 4WD (D6EA) | Diesel   | 4WD | 2959 | 184 | 250 | 09.11-12.12 | ■ |

#### SANTA FE (SM) 11.00-03.06

#### SUV (Executive SUV-J Segment)

|            |          |     |      |     |     |             |   |
|------------|----------|-----|------|-----|-----|-------------|---|
| 2.7 (G6BA) | Gasolina | FWD | 2656 | 129 | 175 | 08.04-03.06 | ■ |
| 2.7        | Gasolina | FWD | 2656 | 139 | 189 | 10.05-03.06 | ■ |
| 2.7        | Gasolina | FWD | 2656 | 139 | 189 | 10.05-03.06 | ■ |
| 2.2 CRDi   | Diesel   | RWD | 2188 | 110 | 150 | 10.05-03.06 | ■ |

#### SANTA FE II (CM) 10.05-03.15

#### SUV Van (Executive SUV-J Segment)

|          |        |     |      |     |     |             |   |
|----------|--------|-----|------|-----|-----|-------------|---|
| CRDi 4x4 | Diesel | 4WD | 2188 | 110 | 150 | 11.05-12.11 | ■ |
| CRDi     | Diesel | FWD | 2188 | 114 | 155 | 09.06-12.11 | ■ |
| CRDi 4x4 | Diesel | 4WD | 2188 | 114 | 155 | 09.06-12.11 | ■ |
| CRDi     | Diesel | FWD | 2199 | 145 | 197 | 01.09-05.13 | ■ |
| CRDi 4x4 | Diesel | 4WD | 2199 | 145 | 197 | 01.09-05.13 | ■ |

#### SANTA FE II (CM) 01.05-03.15

#### SUV (Executive SUV-J Segment)

|                |          |     |      |     |     |             |   |
|----------------|----------|-----|------|-----|-----|-------------|---|
| 2.4 (G4KE)     | Gasolina | FWD | 2359 | 128 | 174 | 11.10-12.12 | ■ |
| 2.4 4x4 (G4KE) | Gasolina | 4WD | 2359 | 128 | 174 | 07.10-12.12 | ■ |
| 2.4            | Gasolina | FWD | 2359 | 130 | 177 | 09.09-12.12 | ■ |

# LISTA DE APLICACIONES - BUYERS GUIDE

|                                      |  |          |     |      |  |     |             |   |
|--------------------------------------|--|----------|-----|------|--|-----|-------------|---|
| 2.4 AWD (G4KE)                       |  | Gasolina | 4WD | 2359 | 130                                      | 177 | 09.09-12.12 | ■ |
| 2.7 (G6EA)                           |  | Gasolina | FWD | 2656 | 125                                      | 170 | 03.06-12.12 | ■ |
| 2.7 4x4 (G6EA)                       |  | Gasolina | 4WD | 2656 | 125                                      | 170 | 03.06-12.12 | ■ |
| 2.7 V6 GLS (G6EA)                    |  | Gasolina | FWD | 2656 | 139                                      | 189 | 03.06-12.09 | ■ |
| 2.7 V6 GLS 4x4 (G6EA)                |  | Gasolina | 4WD | 2656 | 139                                      | 189 | 03.06-12.09 | ■ |
| 2.7 4x4 (G6EA)                       |  | Gasolina | 4WD | 2656 | 147                                      | 200 | 01.07-12.12 | ■ |
| 3.3 Dynamic 4x4                      |  | Gasolina | 4WD | 3342 | 173                                      | 235 | 03.06-12.12 | ■ |
| 3.3                                  |  | Gasolina | FWD | 3342 | 180                                      | 245 | 07.07-01.09 | ■ |
| 3.5 4x4 (G6DC)                       |  | Gasolina | 4WD | 3470 | 206                                      | 280 | 09.09-12.12 | ■ |
| 3.5 4x4 (G6DC)                       |  | Gasolina | 4WD | 3470 | 210                                      | 286 | 07.10-12.12 | ■ |
| 2.0 CRDi (D4HA)                      |  | Diesel   | FWD | 1995 | 110                                      | 150 | 12.10-12.12 | ■ |
| 2.0 CRDi 4x4 (D4HA)                  |  | Diesel   | 4WD | 1995 | 110                                      | 150 | 12.10-12.12 | ■ |
| 2.2 CRDi (D4EB)                      |  | Diesel   | FWD | 2188 | 102                                      | 139 | 03.06-12.12 | ■ |
| 2.2 CRDi 4x4 (D4EB)                  |  | Diesel   | 4WD | 2188 | 102                                      | 139 | 03.06-12.12 | ■ |
| 2.2 CRDi                             |  | Diesel   | RWD | 2188 | 110                                      | 150 | 10.05-03.06 | ■ |
| 2.2 CRDi GLS (D4EB)                  |  | Diesel   | FWD | 2188 | 110                                      | 150 | 03.06-12.09 | ■ |
| 2.2 CRDi GLS 4x4 (D4EB)              |  | Diesel   | 4WD | 2188 | 110                                      | 150 | 03.06-12.09 | ■ |
| 2.2 CRDi (D4EB)                      |  | Diesel   | FWD | 2188 | 114                                      | 155 | 03.06-12.09 | ■ |
| 2.2 CRDi 4x4 (D4EB)                  |  | Diesel   | 4WD | 2188 | 114                                      | 155 | 03.06-12.09 | ■ |
| 2.2 CRDi (D4HB)                      |  | Diesel   | FWD | 2199 | 145                                      | 197 | 01.09-12.12 | ■ |
| 2.2 CRDi 4x4 (D4HB)                  |  | Diesel   | 4WD | 2199 | 145                                      | 197 | 01.09-12.12 | ■ |
| <b>SANTA FE III (DM, DMA) 09.12-</b> |  |          |     |      | <b>SUV (Executive SUV-J Segment)</b>     |     |             |   |
| 2.0                                  |  | Gasolina | FWD | 1998 | 197                                      | 268 | 09.12-12.18 | ■ |
| 2.4 CCVT (G4KE)                      |  | Gasolina | FWD | 2359 | 126                                      | 171 | 06.15-10.18 | ■ |
| 2.4 CCVT AWD (G4KE)                  |  | Gasolina | 4WD | 2359 | 126                                      | 171 | 06.15-10.18 | ■ |
| 3.0 GDi                              |  | Gasolina | FWD | 2999 | 194                                      | 264 | 01.13-12.18 | ■ |
| 3.0 GDi 4WD                          |  | Gasolina | 4WD | 2999 | 194                                      | 264 | 01.13-12.18 | ■ |
| 3.3 4WD (G6DF)                       |  | Gasolina | 4WD | 3342 | 199                                      | 270 | 03.14-12.19 | ■ |
| 2.2 CRDi AWD                         |  | Diesel   | 4WD | 2199 | 142                                      | 193 | 07.18-12.18 | ■ |
| 2.2 CRDi                             |  | Diesel   | FWD | 2199 | 149                                      | 202 | 06.15-12.18 | ■ |
| 2.2 CRDi 4WD                         |  | Diesel   | 4WD | 2199 | 149                                      | 202 | 06.15-12.18 | ■ |
| <b>SANTA FE IV (TM) 02.18-</b>       |  |          |     |      | <b>SUV Van (Executive SUV-J Segment)</b> |     |             |   |
| 2.2 CRDi (D4HB)                      |  | Diesel   | FWD | 2199 | 147                                      | 200 | 07.18-11.20 | ■ |
| 2.2 CRDi AWD (D4HB)                  |  | Diesel   | 4WD | 2199 | 147                                      | 200 | 07.18-11.20 | ■ |
| <b>SANTA FE IV (TM, TMA) 02.18-</b>  |  |          |     |      | <b>SUV (Executive SUV-J Segment)</b>     |     |             |   |
| 2.0 AWD                              |  | Gasolina | 4WD | 1998 | 173                                      | 235 | 02.18-      | ■ |
| 2.0 T-GDI (G4KH)                     |  | Gasolina | FWD | 1998 | 173                                      | 235 | 02.18-      | ■ |
| 2.4 (G4KE)                           |  | Gasolina | FWD | 2359 | 127                                      | 173 | 07.18-      | ■ |
| 2.4 AWD (G4KE)                       |  | Gasolina | 4WD | 2359 | 127                                      | 173 | 07.18-07.20 | ■ |
| 2.4 GDI                              |  | Gasolina | FWD | 2359 | 136                                      | 185 | 07.18-      | ■ |
| 2.4 GDI AWD (G4KJ)                   |  | Gasolina | 4WD | 2359 | 136                                      | 185 | 07.18-07.20 | ■ |
| 2.4 GDI AWD (G4KJ)                   |  | Gasolina | 4WD | 2359 | 138                                      | 188 | 07.18-07.20 | ■ |
| 3.5 MPI AWD (G6DC)                   |  | Gasolina | 4WD | 3470 | 183                                      | 249 | 07.19-07.20 | ■ |
| 3.5 MPI AWD (G6DC)                   |  | Gasolina | 4WD | 3470 | 206                                      | 280 | 07.18-      | ■ |
| 2.0 CRDi (D4HA)                      |  | Diesel   | FWD | 1995 | 110                                      | 150 | 07.18-07.20 | ■ |
| 2.0 CRDi AWD (D4HA)                  |  | Diesel   | 4WD | 1995 | 110                                      | 150 | 07.18-07.20 | ■ |
| 2.0 CRDi (D4HA)                      |  | Diesel   | FWD | 1995 | 137                                      | 186 | 02.18-07.20 | ■ |
| 2.0 CRDi AWD (D4HA)                  |  | Diesel   | 4WD | 1995 | 137                                      | 186 | 02.18-07.20 | ■ |
| 2.2 CRDi (D4HB)                      |  | Diesel   | FWD | 2199 | 147                                      | 200 | 07.18-11.20 | ■ |
| 2.2 CRDi AWD (D4HB)                  |  | Diesel   | 4WD | 2199 | 147                                      | 200 | 07.18-11.20 | ■ |

# LISTA DE APLICACIONES - BUYERS GUIDE

|                             |                  |     |      |   |     |             |   |
|-----------------------------|------------------|-----|------|---|-----|-------------|---|
| 2.2 CRDi                    | Diesel           | FWD | 2199 | 149   | 203 | 02.18-      | ■ |
| 2.2 CRDi AWD (D4HB)         | Diesel           | 4WD | 2199 | 149   | 203 | 02.18-      | ■ |
| HYUNDAI (HUATAI)            |                  |     |      |   |     |             |   |
| SANTA FE 10.06-             |                  |     |      | Closed Off-Road Vehicle (Executive SUV-J Segment) |     |             |   |
| 1.8                         | Gasolina         | FWD | 1796 | 110   | 148 | 10.06-      | ■ |
| 2.0                         | Gasolina         | FWD | 1997 | 93  | 126 | 11.10-      | ■ |
| 2.7                         | Gasolina         | FWD | 2656 | 128   | 172 | 10.06-      | ■ |
| 2.0 D                       | Diesel           | RWD | 1991 | 93  | 125 | 10.06-      | ■ |
| INOKOM                      |                  |     |      |   |     |             |   |
| SANTA FE (CM) 09.06-        |                  |     |      | SUV (Executive SUV-J Segment)                     |     |             |   |
| 2.7 (G6EA)                  | Gasolina         | FWD | 2656 | 138   | 188 | 09.06-12.12 | ■ |
| 2.7 AWD (G6EA)              | Gasolina         | 4WD | 2656 | 138   | 188 | 09.06-12.12 | ■ |
| 2.2 CRDi (D4EB)             | Diesel           | FWD | 2188 | 110   | 150 | 09.06-12.12 | ■ |
| 2.2 CRDi AWD (D4EB)         | Diesel           | 4WD | 2188 | 110   | 150 | 09.06-12.12 | ■ |
| KIA                         |                  |     |      |   |     |             |   |
| SORENTO II (XM) 06.09-12.15 |                  |     |      | SUV Van (Compact SUV-J Segment)                   |     |             |   |
| CVVT                        | Gasolina         | FWD | 2359 | 128   | 174 | 06.09-12.15 | ■ |
| CVVT 4WD                    | Gasolina         | 4WD | 2359 | 128   | 174 | 06.09-12.15 | ■ |
| CRDi                        | Diesel           | FWD | 2199 | 145   | 197 | 11.09-12.15 | ■ |
| CRDi 4WD                    | Diesel           | 4WD | 2199 | 145   | 197 | 11.09-12.15 | ■ |
| SORENTO II (XM) 09.09-      |                  |     |      | SUV (Compact SUV-J Segment)                       |     |             |   |
| 2.4 CVVT (G4KE)             | Gasolina         | FWD | 2359 | 128   | 174 | 11.09-12.15 | ■ |
| 2.4 CVVT 4WD (G4KE)         | Gasolina         | 4WD | 2359 | 128   | 174 | 11.09-12.15 | ■ |
| 2.4                         | Gasolina         | FWD | 2359 | 130   | 177 | 09.10-12.12 | ■ |
| 2.4 AWD                     | Gasolina         | 4WD | 2359 | 130   | 177 | 09.10-12.12 | ■ |
| 2.4 GDI                     | Gasolina         | FWD | 2359 | 142   | 193 | 09.13-      | ■ |
| 3.3 GDI                     | Gasolina         | FWD | 3342 | 216   | 294 | 09.13-      | ■ |
| 3.5                         | Gasolina         | FWD | 3470 | 203   | 276 | 11.09-12.15 | ■ |
| 3.5 4WD (G6DC)              | Gasolina         | 4WD | 3470 | 203   | 276 | 11.09-12.15 | ■ |
| 3.5 4WD (G6DC)              | Gasolina         | 4WD | 3470 | 204   | 278 | 05.13-12.15 | ■ |
| 3.5                         | Gasolina         | FWD | 3470 | 206   | 280 | 09.10-12.13 | ■ |
| 3.5 4WD                     | Gasolina         | 4WD | 3470 | 206   | 280 | 01.11-12.15 | ■ |
| 2.7 LPI                     | Gasol./Gas (LPG) | FWD | 2656 | 119   | 162 | 11.09-12.15 | ■ |
| 2.0 CRDi (D4HA)             | Diesel           | FWD | 1995 | 110   | 150 | 11.10-12.15 | ■ |
| 2.0 CRDi 4WD (D4HA)         | Diesel           | 4WD | 1995 | 110   | 150 | 11.10-12.15 | ■ |
| 2.0 CRDi 4WD                | Diesel           | 4WD | 1995 | 135   | 184 | 11.09-12.15 | ■ |
| 2.2 CRDi (D4HB)             | Diesel           | FWD | 2199 | 145   | 197 | 11.09-12.15 | ■ |
| 2.2 CRDi 4WD (D4HB)         | Diesel           | 4WD | 2199 | 145   | 197 | 11.09-12.15 | ■ |
| 2.2 CRDi (D4HB)             | Diesel           | FWD | 2199 | 147   | 200 | 11.09-12.15 | ■ |
| 2.2 CRDi 4WD (D4HB)         | Diesel           | 4WD | 2199 | 147   | 200 | 11.09-12.15 | ■ |
| SORENTO III (UM) 01.15-     |                  |     |      | SUV (Compact SUV-J Segment)                       |     |             |   |
| 2.0 GDI (G4KH)              | Gasolina         | FWD | 1998 | 177   | 241 | 01.15-12.18 | ■ |
| 2.4 (G4KE)                  | Gasolina         | FWD | 2359 | 126   | 172 | 01.15-02.20 | ■ |
| 2.4 4WD (G4KE)              | Gasolina         | 4WD | 2359 | 126   | 172 | 01.15-10.20 | ■ |
| 2.4 (G4KE)                  | Gasolina         | FWD | 2359 | 128   | 174 | 01.15-12.20 | ■ |
| 2.4 (G4KE)                  | Gasolina         | FWD | 2359 | 129   | 175 | 01.15-12.20 | ■ |
| 2.4 4WD (G4KE)              | Gasolina         | 4WD | 2359 | 129   | 175 | 01.15-12.20 | ■ |
| 2.4 GDI (G4KJ)              | Gasolina         | FWD | 2359 | 138   | 188 | 01.15-10.18 | ■ |
| 2.4 GDI 4WD (G4KJ)          | Gasolina         | 4WD | 2359 | 138   | 188 | 01.15-10.18 | ■ |

# LISTA DE APLICACIONES - BUYERS GUIDE

|                       |          |     |      |     |     |             |   |
|-----------------------|----------|-----|------|-----|-----|-------------|---|
| 3.3 (G6DF)            | Gasolina | FWD | 3342 | 196 | 266 | 01.15-12.20 | ■ |
| 3.3 4WD               | Gasolina | 4WD | 3342 | 196 | 266 | 01.15-12.20 | ■ |
| 3.3                   | Gasolina | FWD | 3342 | 199 | 271 | 04.15-12.18 | ■ |
| 3.3 4WD               | Gasolina | 4WD | 3342 | 199 | 271 | 04.15-12.18 | ■ |
| 3.5 D-CVVT (G6DC)     | Gasolina | FWD | 3470 | 183 | 249 | 12.18-12.20 | ■ |
| 3.5 D-CVVT 4WD (G6DC) | Gasolina | 4WD | 3470 | 183 | 249 | 12.18-12.20 | ■ |
| 3.5 D-CVVT (G6DC)     | Gasolina | FWD | 3470 | 203 | 276 | 07.17-12.20 | ■ |
| 3.5 D-CVVT 4WD (G6DC) | Gasolina | 4WD | 3470 | 203 | 276 | 07.17-12.20 | ■ |
| 3.5 D-CVVT (G6DC)     | Gasolina | FWD | 3470 | 206 | 280 | 07.17-12.20 | ■ |
| 2.0 CRDi 4WD (D4HA)   | Diesel   | 4WD | 1995 | 136 | 185 | 07.15-12.20 | ■ |
| 2.0 CRDi              | Diesel   | FWD | 1995 | 137 | 186 | 07.15-12.20 | ■ |
| 2.0 CRDi 4WD          | Diesel   | 4WD | 1995 | 137 | 186 | 07.15-12.20 | ■ |
| 2.2 CRDi 4WD (D4HB)   | Diesel   | 4WD | 2199 | 142 | 193 | 11.16-12.20 | ■ |
| 2.2 CRDi              | Diesel   | FWD | 2199 | 143 | 194 | 01.15-12.20 | ■ |
| 2.2 CRDi 4WD (D4HB)   | Diesel   | 4WD | 2199 | 145 | 197 | 11.16-12.20 | ■ |
| 2.2 CRDi (D4HB)       | Diesel   | FWD | 2199 | 147 | 200 | 01.15-08.20 | ■ |
| 2.2 CRDi 4WD (D4HB)   | Diesel   | 4WD | 2199 | 147 | 200 | 01.15-08.20 | ■ |
| 2.2 CRDi 4WD (D4HB)   | Diesel   | 4WD | 2199 | 149 | 202 | 01.15-12.20 | ■ |