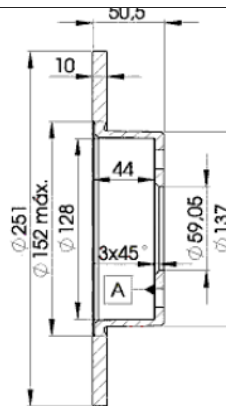
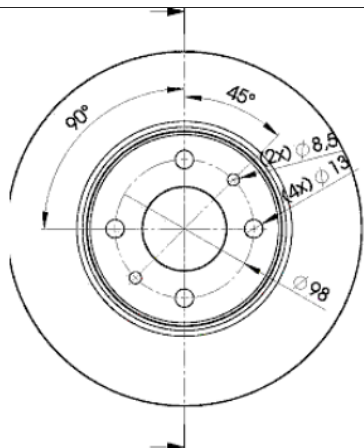


# LISTA DE APLICACIONES - BUYERS GUIDE

## 78BD4070-2



Weight: 7.424



## 78BD4070-2

E1 90R-02C0415/0089



Ø251x10x50.5

**MAKE**

ALFA ROMEO

CHRYSLER

FIAT

LANCIA



Trac.	CC	Kw	CV
-------	----	----	----



Front / Rear

### ALFA ROMEO

#### 164 / 168 (164\_) 01.87-10.98

#### Saloon (Executive car-E Segment)

2.0 (164A2C) (AR 06416)	Gasolina	FWD	1962	102	138	06.87-09.98	■
2.0 (164A2C, 164A2L, 164A2H) (AR 06420)	Gasolina	FWD	1962	105	143	11.87-10.92	■
2.0 Twin Spark (164.A2C, 164.A2L, 164A2H) (AR 06420)	Gasolina	FWD	1962	105	143	06.87-08.92	■
2.0 Twin Spark (164A2C, 164A2L, 164A2H) (AR 06420)	Gasolina	FWD	1962	105	143	07.90-10.92	■
2.0 Twin Spark (164.A2H, 164.A2) (AR 06420)	Gasolina	FWD	1962	109	148	06.87-09.92	■
2.0 Twin Spark (164A2) (AR 06420)	Gasolina	FWD	1962	109	148	06.87-09.92	■
2.0 Twin Spark (164.H3) (AR 64103)	Gasolina	FWD	1995	106	144	09.92-09.98	■

### CHRYSLER

#### DELTA 08.11-

#### Hatchback (Compact car-C Segment)

1.4 (198 A4.000)	Gasolina	FWD	1368	88	120	08.11-	■
1.4 16V (198 A7.000)	Gasolina	FWD	1368	103	140	08.11-	■
1.6 D Multijet (198 A2.000)	Diesel	FWD	1598	88	120	08.11-	■
2.0 D Multijet (198 A5.000)	Diesel	FWD	1956	121	165	08.11-	■

### FIAT

#### BRAVO II (198\_) 03.08-12.14

#### Hatchback Van (LCVs-N1 Segment)

1.6 JTD Multijet (198AXH1B) (198 A3.000)	Diesel	FWD	1598	77	105	03.08-12.14	■
--	--------	-----	------	----	-----	-------------	---

#### BRAVO II / RITMO III (198\_) 11.06-

#### Hatchback (Compact car-C Segment)

1.4 (198AXA1B) (192 B2.000)	Gasolina	FWD	1368	66	90	04.07-12.14	■
1.4 T-Jet (198AXG1B) (198 A4.000)	Gasolina	FWD	1368	88	120	10.07-12.14	■
1.4 16V (198AXS1B) (198 A7.000)	Gasolina	FWD	1368	103	140	04.10-12.14	■

# LISTA DE APLICACIONES - BUYERS GUIDE

1.4 T-Jet (198AXF1B) (198 A1.000)	Gasolina	FWD	1368	110	150	09.07-12.14	■
1.4 T-Jet (198257)	Gasolina	FWD	1368	112	152	06.11-12.16	■
1.4 LPG (198AXA1B) (192 B2.000)	Gasol./Gas (LPG)	FWD	1368	66	90	12.08-12.14	■
1.6 D Multijet (198AXM1B) (198 A6.000)	Diesel	FWD	1598	66	90	03.08-12.14	■
1.6 D Multijet (198AXH1B) (198 A3.000)	Diesel	FWD	1598	77	105	09.07-12.14	■
1.6 D Multijet (198AXH1B) (844 A3.000)	Diesel	FWD	1598	77	105	09.07-12.14	■
1.6 D Multijet (198AXL1B) (198 A2.000)	Diesel	FWD	1598	88	120	03.08-12.14	■
1.9 D Multijet (198AXE1A) (192 B5.000)	Diesel	FWD	1910	66	90	04.07-12.08	■
1.9 D Multijet (198AXD1A) (192 A1.000)	Diesel	FWD	1910	85	116	11.06-12.09	■
1.9 D Multijet (198AXD1A) (192 B4.000)	Diesel	FWD	1910	85	116	11.06-12.09	■
1.9 D Multijet (198AXB1A) (192 A8.000)	Diesel	FWD	1910	88	120	04.07-12.14	■
1.9 D Multijet (198AXC1B) (937 A5.000)	Diesel	FWD	1910	110	150	04.07-12.14	■
2.0 D Multijet (198AXPIB) (198 A8.000)	Diesel	FWD	1956	120	163	09.08-12.14	■
2.0 D Multijet (198AXPIB) (844 A2.000)	Diesel	FWD	1956	120	163	09.08-12.14	■
2.0 D Multijet (198AXN1B) (198 A5.000)	Diesel	FWD	1956	121	165	09.08-12.14	■
<b>CROMA (154_) 12.85-12.96</b>				<b>Hatchback (Large family car-D Segment)</b>			
1600 (154 A.048)	Gasolina	FWD	1585	61	83	12.85-12.90	■
2000 CHT (154.AC) (154 A1.000)	Gasolina	FWD	1995	66	90	12.85-02.89	■
2000 CHT (154 A1.000)	Gasolina	FWD	1995	74	100	01.91-09.92	■
2000 CHT (154 C5.000)	Gasolina	FWD	1995	74	100	01.91-09.92	■
2000 i.e. (154.AM) (834 B.048)	Gasolina	FWD	1995	83	113	03.86-09.90	■
2000 i.e. (154.AM, 154.LM) (154 C3.046)	Gasolina	FWD	1995	85	116	10.87-08.96	■
2000 i.e. (154.AM, 154.LM) (834 B.146)	Gasolina	FWD	1995	85	116	10.87-08.96	■
2000 i.e. (154.AD) (154 C3.000)	Gasolina	FWD	1995	88	120	03.87-09.92	■
2000 i.e. (154.AD) (834 B.000)	Gasolina	FWD	1995	88	120	03.87-09.92	■
2000 16V (154 E1.000)	Gasolina	FWD	1995	101	137	08.92-08.96	■
2000 i.e. Turbo (154.AM, 154.LM) (154 C4.046)	Gasolina	FWD	1995	110	150	06.87-08.96	■
2000 i.e. Turbo (154.AM, 154.LM) (834 C.146)	Gasolina	FWD	1995	110	150	06.87-08.96	■
2000 i.e. Turbo (834 C.146)	Gasolina	FWD	1995	111	151	11.86-11.88	■
2000 i.e. Turbo (154.AM, 154.LM) (154 A2.000)	Gasolina	FWD	1995	114	155	12.85-06.90	■
2500 V6 (834 G.000)	Gasolina	FWD	2492	119	162	06.93-08.96	■
1900 Turbo D i.d. (154.LL, 154.PL) (154 C6.000)	Diesel	FWD	1929	66	90	08.87-10.92	■
1900 Turbo D i.d. (154 D1.000)	Diesel	FWD	1929	69	94	11.92-12.96	■
2500 TD (154.AE) (8144.91.2000)	Diesel	FWD	2445	74	101	12.85-08.89	■
2500 D (8144.67)	Diesel	FWD	2499	55	75	12.85-12.89	■
2500 TDE (8144.97 S)	Diesel	FWD	2500	77	105	12.91-08.96	■
2500 TD (154.LL, 154.PL) (8144.97)	Diesel	FWD	2500	85	115	05.89-08.96	■
2500 TD (154.LL, 154.PL) (8144.97 Y)	Diesel	FWD	2500	85	115	05.89-08.96	■
2500 TD (154.LL, 154.PL) (8144.97.2400)	Diesel	FWD	2500	85	115	05.89-08.96	■
<b>LINEA (323_, 110_) 10.06-</b>				<b>Saloon (Compact car-C Segment)</b>			
1.4 T-Jet	Gasolina	FWD	1368	84	114	09.07-03.13	■
1.4 T-Jet (323AXC1A) (198 A4.000)	Gasolina	FWD	1368	88	120	05.07-	■
1.6 (323.AXF1A) (310 A5.011)	Gasolina	FWD	1598	81	110	10.11-	■
1.6 D Multijet (198 A3.000)	Diesel	FWD	1598	77	105	06.09-	■
<b>MULTIPLA (186_) 04.99-06.10</b>				<b>MPV (Compact MPV-M1 Segment)</b>			
1.6 (182 B6.000)	Gasolina	FWD	1596	68	92	05.04-08.05	■
1.6 16V (186AGB1A) (182 B6.000)	Gasolina	FWD	1596	70	95	04.02-06.10	■
1.6 (186AXC1A, 186BMC1A, 186BXC1A) (182 B6.000)	Gasolina	FWD	1596	76	103	09.00-06.10	■

# LISTA DE APLICACIONES - BUYERS GUIDE

1.6 16V GPL (182 B6.000)		Gasol./Gas (LPG)	FWD	1596	76	103	10.01-06.10	■
1.6 16V Blupower (186AMA1A) (186 A3.000)		Gasol./Gas (CNG)	FWD	1581	70	95	04.99-06.10	■
1.6 16V Bipower (186AXC1A) (182 B6.000)		Gasol./Gas (CNG)	FWD	1596	76	103	10.01-06.10	■
1.6 Natural Power (186AGB1A05) (182 B6.000)		Gasol./Gas (CNG)	FWD	1596	77	105	11.08-06.10	■
1.9 JTD 105 (186AXB1A) (182 B4.000)		Diesel	FWD	1910	77	105	04.99-06.10	■
1.9 JTD 110 (186 A6.000)		Diesel	FWD	1910	81	110	03.01-07.02	■
1.9 JTD 115 (186 A8.000)		Diesel	FWD	1910	85	115	07.02-06.10	■
1.9 JTD (186AXE1A) (186 A9.000)		Diesel	FWD	1910	88	120	04.02-06.10	■
<b>MULTIPLA VAN (186_) 04.99-06.10</b>					<b>Box Body/MPV (LCVs-N1 Segment)</b>			
1.6 (186AXC1A, 186BMC1A, 186BXC1A)		Gasolina	FWD	1596	76	103	09.00-06.10	■
Bipower		Gasol./Etanol	FWD	1596	76	103	10.01-06.10	■
1.9 JTD (186AXB1A)		Diesel	FWD	1910	77	105	04.99-08.00	■
1.9 JTD		Diesel	FWD	1910	81	110	09.00-03.02	■
1.9 JTD		Diesel	FWD	1910	85	116	05.04-06.10	■
1.9 JTD (186AXG1A, 186BXG1A)		Diesel	FWD	1910	88	120	04.02-06.10	■
<b>STILO (192_) 10.01-08.08</b>					<b>Estate Van (Compact car-C Segment)</b>			
1.4 (192DXH1B) (843 A1.000)		Gasolina	FWD	1368	70	95	01.04-08.08	■
1.6 (192DXB1A) (182 B6.000)		Gasolina	FWD	1596	100	136	04.05-08.08	■
1.6 (192DXR1A) (192 B3.000)		Gasolina	FWD	1598	77	105	04.05-08.08	■
1.9 JTD (192DXF1A) (192 A3.000)		Diesel	FWD	1910	59	80	10.01-08.05	■
1.9 JTD (192DXE1A) (192 A1.000)		Diesel	FWD	1910	85	116	10.01-08.05	■
1.9 JTD (192DXS1A) (192 A8.000)		Diesel	FWD	1910	88	120	09.05-08.08	■
1.9 JTD (192DXG1B) (937 A4.000)		Diesel	FWD	1910	93	126	09.03-08.05	■
1.9 JTD (192DXG1B) (192 B1.000)		Diesel	FWD	1910	100	136	02.04-08.08	■
1.9 JTD (192DXG1B) (192 A5.000)		Diesel	FWD	1910	103	140	09.03-08.05	■
1.9 JTD (192DXT1B) (937 A5.000)		Diesel	FWD	1910	110	150	09.05-08.08	■
<b>STILO (192_) 10.01-11.10</b>					<b>Hatchback (Compact car-C Segment)</b>			
1.2 16V (192_XA1B) (188 A5.000)		Gasolina	FWD	1242	59	80	02.02-11.06	■
1.4 16V (192 B2.000)		Gasolina	FWD	1368	66	90	03.05-11.06	■
1.4 16V (192AXH1B, 192BXH1B) (843 A1.000)		Gasolina	FWD	1368	70	95	10.03-12.06	■
1.6 16V (192_XB1A) (182 B6.000)		Gasolina	FWD	1596	76	103	10.01-11.06	■
1.6 (182 B6.000)		Gasolina	FWD	1596	100	136	04.05-11.06	■
1.6 16V (192 B3.000)		Gasolina	FWD	1598	77	105	05.05-11.06	■
1.8 16V		Gasolina	FWD	1747	90	122	06.02-12.07	■
1.8 16V (192AXC1A, 192BXC1A) (192 A4.000)		Gasolina	FWD	1747	98	133	10.01-04.07	■
1.8		Gasolina	FWD	1796	76	103	01.04-11.06	■
1.8 Flex		Gasolina	FWD	1796	84	114	09.05-11.10	■
1.8		Gasolina	FWD	1796	90	122	01.04-11.06	■
2.4 20V		Gasolina	FWD	2446	123	167	01.04-11.06	■
2.4 20V (192_XD1A, 192AXD12) (192 A2.000)		Gasolina	FWD	2446	125	170	10.01-04.07	■
1.9 JTD (192_XF1A) (192 A3.000)		Diesel	FWD	1910	59	80	02.02-11.06	■
1.9 JTD (192AXS1B, 192BXS1B) (192 B5.000)		Diesel	FWD	1910	66	90	09.04-11.06	■
1.9 D Multijet (192 A9.000)		Diesel	FWD	1910	74	100	09.05-11.06	■
1.9 JTD (192_XE1A) (192 A1.000)		Diesel	FWD	1910	85	115	10.01-11.06	■
1.9 JTD (192_XE1A) (937 A7.000)		Diesel	FWD	1910	85	115	10.01-11.06	■
1.9 D Multijet (192 A8.000)		Diesel	FWD	1910	88	120	09.05-11.06	■

# LISTA DE APLICACIONES - BUYERS GUIDE

1.9 JTD (937 A4.000)		Diesel	FWD	1910	93	126	09.03-11.06	■
1.9 JTD (192 B1.000)		Diesel	FWD	1910	100	136	04.04-11.06	■
1.9 JTD (192 A5.000)		Diesel	FWD	1910	103	140	01.04-11.06	■
1.9 D Multijet (937 A5.000)		Diesel	FWD	1910	110	150	09.05-11.06	■
<b>STILO Multi Wagon (192_) 01.03-08.08</b>					<b>Estate (Compact car-C Segment)</b>			
1.4 16V (192 B2.000)		Gasolina	FWD	1368	66	90	03.05-08.08	■
1.4 16V (843 A1.000)		Gasolina	FWD	1368	70	95	01.04-08.08	■
1.6 16V (182 B6.000)		Gasolina	FWD	1596	76	103	01.03-08.08	■
1.6 16V (192 B3.000)		Gasolina	FWD	1598	77	105	03.05-12.07	■
1.8 16V (192 A4.000)		Gasolina	FWD	1747	98	133	01.03-08.08	■
1.8		Gasolina	FWD	1796	76	103	01.04-08.08	■
1.8		Gasolina	FWD	1796	84	114	09.05-08.08	■
1.8		Gasolina	FWD	1796	90	122	01.04-08.08	■
2.4 20V (19245ZO) (192 A7.011)		Gasolina	FWD	2446	123	167	01.04-08.08	■
1.9 JTD (192 A3.000)		Diesel	FWD	1910	59	80	01.03-08.08	■
1.9 D (192 B5.000)		Diesel	FWD	1910	66	90	09.04-08.08	■
1.9 D Multijet (192 A9.000)		Diesel	FWD	1910	74	100	09.05-08.08	■
1.9 JTD (192 A1.000)		Diesel	FWD	1910	85	115	01.03-08.08	■
1.9 JTD (937 A7.000)		Diesel	FWD	1910	85	115	01.03-08.08	■
1.9 D Multijet (192 A8.000)		Diesel	FWD	1910	88	120	09.05-08.08	■
1.9 JTD (937 A4.000)		Diesel	FWD	1910	93	126	09.03-08.08	■
1.9 JTD (192 B1.000)		Diesel	FWD	1910	100	136	04.04-08.08	■
1.9 JTD (192 A5.000)		Diesel	FWD	1910	103	140	01.04-08.08	■
1.9 D Multijet (192DXT1B) (937 A5.000)		Diesel	FWD	1910	110	150	09.05-08.08	■
<b>LANCIA</b>								
<b>DELTA III (844_) 08.08-08.14</b>					<b>Hatchback (Compact car-C Segment)</b>			
1.4 (844.AXA1A) (198 A4.000)		Gasolina	FWD	1368	88	120	09.08-08.14	■
1.4 16V (844.AXL1A) (198 A7.000)		Gasolina	FWD	1368	103	140	07.10-08.14	■
1.4 (844.AXB1A) (198 A1.000)		Gasolina	FWD	1368	110	150	09.08-08.14	■
1.4 Bifuel (844.AXA1A) (198 A4.000)		Gasol./Gas (LPG)	FWD	1368	88	120	07.11-08.14	■
1.6 D Multijet (844.AXP1A) (944 A 3.000)		Diesel	FWD	1598	77	105	04.11-08.14	■
1.6 D Multijet (844.AXF11, 844.AXF1A) (955 A4.000)		Diesel	FWD	1598	85	116	08.08-08.14	■
1.6 D Multijet (844.AXC11, 844.AXC1A) (198 A2.000)		Diesel	FWD	1598	88	120	09.08-08.14	■
1.9 D Multijet (844.AXE1A) (844 A1.000)		Diesel	FWD	1910	140	190	01.09-08.14	■
2.0 D Multijet (844.AXG1A, 844.AXN1A) (844 A2.000)		Diesel	FWD	1956	120	163	09.08-08.14	■
2.0 D Multijet (844.AXD1A, 844.AXM1A) (198 A5.000)		Diesel	FWD	1956	121	165	09.08-08.14	■
2.0 D Multijet (844.AXD1A, 844.AXM1A) (198 A8.000)		Diesel	FWD	1956	121	165	09.08-08.14	■
<b>LYBRA (839_) 07.99-10.05</b>					<b>Saloon (Compact executive car-D Segment)</b>			
1.6 16V (839AXA1A) (182 A4.000)	-06/01	Gasolina	FWD	1581	76	103	07.99-10.05	■
1.6 (182 B6.000)	-06/01	Gasolina	FWD	1596	76	103	10.00-10.05	■
1.8 16V (839AXB1A, 839AXG1A) (839 A4.000)	-06/01	Gasolina	FWD	1747	96	131	07.99-10.05	■
1.8 16V (839AXB1A, 839AXG1A) (839 A7.000)	-06/01	Gasolina	FWD	1747	96	131	07.99-10.05	■
1.8 16V (839AXB1A, 839AXG1A) (839 A9.000)	-06/01	Gasolina	FWD	1747	96	131	07.99-10.05	■
2.0 20V (839AXH1A) (185 A8.000)	-06/01	Gasolina	FWD	1998	110	150	09.00-10.05	■
2.0 20V (839AXC11, 839AXC1A) (182 B7.000)		Gasolina	FWD	1998	113	154	07.99-09.00	■
2.4 20V (839.CXM1A) (192 A2.000)		Gasolina	FWD	2446	125	170	10.01-10.05	■
1.9 JTD (839AXD1A) (AR 32302)		Diesel	FWD	1910	77	105	07.99-09.00	■

# LISTA DE APLICACIONES - BUYERS GUIDE

1.9 JTD (839AXI1A) (AR 37101)		Diesel	FWD	1910	81	110	09.00-05.01	■
1.9 JTD (839.AXI1A, 839.AXN1A, 839.CXL1A) (937 A2.000)		Diesel	FWD	1910	85	116	05.01-10.05	■
2.4 JTD (839AXE1A) (839 A5.000)		Diesel	FWD	2387	99	135	07.99-02.01	■
2.4 JTD (839AXE1A) (AR 32501)		Diesel	FWD	2387	99	135	07.99-02.01	■
2.4 JTD (839AXL1A) (839 A6.000)	-06/01	Diesel	FWD	2387	103	140	09.00-05.02	■
2.4 JTD (839.AXE1A) (841 C.000)	vehicles with ABS	Diesel	FWD	2387	110	150	05.02-10.05	■
<b>LYBRA SW (839_) 07.99-10.05</b>					<b>Estate (Compact executive car-D Segment)</b>			
1.6 16V (839BXA1A) (182 A4.000)	-06/01	Gasolina	FWD	1581	76	103	07.99-10.05	■
1.6 (839.BXF1A) (182 B6.000)	-06/01	Gasolina	FWD	1596	76	103	10.00-10.05	■
1.8 16V (839BXB1A, 839BXG1A) (839 A4.000)	-06/01	Gasolina	FWD	1747	96	131	07.99-10.05	■
1.8 16V (839BXB1A, 839BXG1A) (839 A7.000)	-06/01	Gasolina	FWD	1747	96	131	07.99-10.05	■
2.0 20V (839BXH1A) (185 A8.000)	-06/01	Gasolina	FWD	1998	110	150	09.00-10.05	■
2.0 20V (839BXC11, 839BXC1A) (182 B7.000)		Gasolina	FWD	1998	113	154	07.99-09.00	■
1.9 JTD (839BXD1A) (AR 32302)		Diesel	FWD	1910	77	105	07.99-09.01	■
1.9 JTD (839BXI1A) (AR 37101)		Diesel	FWD	1910	81	110	09.00-05.01	■
1.9 JTD (839.BXI1A, 839.BXN1A, 839.CXL1A) (937 A2.000)		Diesel	FWD	1910	85	116	05.01-10.05	■
2.4 JTD (839BXE1A) (839 A5.000)		Diesel	FWD	2387	99	135	10.99-09.00	■
2.4 JTD (839BXE1A) (AR 32501)		Diesel	FWD	2387	99	135	10.99-09.00	■
2.4 JTD (839BXL1A) (839 A6.000)	-06/01	Diesel	FWD	2387	103	140	09.00-10.05	■
2.4 JTD (839.BXE1A) (841 C.000)	vehicles with ABS	Diesel	FWD	2387	110	150	05.02-10.05	■
<b>THEMA (834_) 11.84-07.94</b>					<b>Saloon (Executive car-E Segment)</b>			
2000 i.e. (834AB) (834 B.048)		Gasolina	FWD	1995	83	113	03.86-09.88	■
2000 i.e. (834BV) (834 B.146)		Gasolina	FWD	1995	85	115	09.87-05.92	■
2000 i.e (834AB) (834 B1.000)		Gasolina	FWD	1995	86	117	09.88-05.92	■
2000 i.e. (834B) (834 B.000)		Gasolina	FWD	1995	88	120	11.84-09.88	■
2000 i.e. 16V (834AI) (834 B2.246)		Gasolina	FWD	1995	104	141	02.89-05.92	■
2000 i.e. 16V (834AA) (834 B2.000)		Gasolina	FWD	1995	108	147	05.88-08.92	■
2000 i.e.Turbo (834CV) (834 C.146)		Gasolina	FWD	1995	110	150	07.86-05.90	■
2000 16V (834FA) (834 F1.000)		Gasolina	FWD	1995	112	152	08.92-12.93	■
2000 i.e. Turbo (834C) (834 C.000)		Gasolina	FWD	1995	122	166	11.84-12.89	■
2000 i.e. 16V Turbo (834AL) (834 C1.246)		Gasolina	FWD	1995	130	177	04.89-05.92	■
2000 16V Turbo (834AC) (834 C1.000)		Gasolina	FWD	1995	133	181	12.88-06.90	■
2000 16V Turbo (834GC, 834FC) (834 F2.000)		Gasolina	FWD	1995	148	201	10.92-07.94	■
2850 V6 i.e. (834AD, 834CD, 834BD) (834 E.146)		Gasolina	FWD	2849	108	147	06.88-05.92	■
2850 V6 i.e. (834F) (834 E.000)		Gasolina	FWD	2849	110	150	11.84-09.88	■
2850 V6 i.e. (834F) (834 E.146)		Gasolina	FWD	2849	110	150	11.84-09.88	■
3000 V6 (834GD, 834FD) (834 F.000)		Gasolina	FWD	2959	126	171	08.92-07.94	■
2500 Turbo D (834D) (8144.91)		Diesel	FWD	2445	74	101	11.84-09.88	■
2500 Turbo DS (834AE) (8144.97)		Diesel	FWD	2499	85	115	06.88-05.92	■
2500 Turbo DS (834AM) (8144. 97S)		Diesel	FWD	2500	77	105	05.88-07.92	■
2500 Turbo DS (834FE, 834LE) (8144.97 Y)		Diesel	FWD	2500	85	116	05.92-07.94	■
<b>THEMA SW (834_) 03.87-07.94</b>					<b>Estate (Executive car-E Segment)</b>			
2000 i.e. 16V (834AI) (834 B2.246)		Gasolina	FWD	1995	104	141	02.89-05.92	■
2000 i.e. 16V (834AA) (834 B2.000)		Gasolina	FWD	1995	108	147	05.89-08.92	■
2000 Turbo (834.FA, 834.BV, 834.CV) (834 C.146)		Gasolina	FWD	1995	110	150	12.88-03.92	■
2000 16V (834FA) (834 F1.000)		Gasolina	FWD	1995	112	152	05.92-07.94	■
2000 i.e. Turbo (834.05) (834 C.000)		Gasolina	FWD	1995	122	166	06.87-07.94	■
2000 i.e. 16V Turbo (834AL) (834 C1.246)		Gasolina	FWD	1995	130	177	04.89-03.93	■

## LISTA DE APLICACIONES - BUYERS GUIDE

2000 i.e. 16V Turbo (834AL) (834 C1.000)	Gasolina	FWD	1995	133	181	12.88-06.90
2000 Turbo 16V (834GC, 834FC) (834 F2.000)	Gasolina	FWD	1995	148	201	11.92-07.94
3000 V6 (834GD, 834FD) (834 F.000)	Gasolina	FWD	2959	126	171	09.92-07.94
2500 Turbo DS (834D) (8144.91)	Diesel	FWD	2445	74	101	03.87-09.90
2500 Turbo DS (834AE) (8144.97)	Diesel	FWD	2499	85	115	06.88-05.92
2500 Turbo DS (834AM) (8144. 97S)	Diesel	FWD	2500	77	105	05.88-07.92
2500 Turbo DS (834FE, 834LE) (8144.97 Y)	Diesel	FWD	2500	85	116	09.92-07.94

