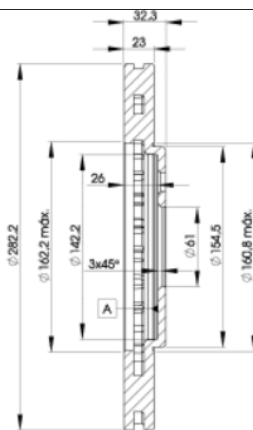


LISTA DE APLICACIONES - BUYERS GUIDE

78BD4073-2



Weight: 11.750



78BD4073-2

E1 90R-02C0074/0858



Ø282.2x23x32.3

MAKE
CHRYSLER
DODGE

O.E.M.	MAKE
04879138AA	CHRYSLER
4695186	CHRYSLER
4695189	CHRYSLER
4695957	CHRYSLER
4764073	CHRYSLER
4879138AA	CHRYSLER
4879138AC	DODGE
4879138AE	DODGE
4879228AA	CHRYSLER



Trac.	CC	Kw	CV	Hourglass icon	Front / Rear
-------	----	----	----	----------------	--------------

CHRYSLER

CIRRUS 05.94-09.00							Saloon (Large family car-D Segment)		
2.4 LX (EDZ)		Gasolina	FWD	2429	103	140	05.94-09.00	■	
2.5 LX (EEB)		Gasolina	FWD	2497	120	163	10.94-09.00	■	
SEBRING II / CIRRUS (JR) 09.00-06.07							Saloon (Executive car-E Segment)		
2.0 (ECC)	-10/05	Gasolina	FWD	1996	104	141	04.01-06.07	■	
2.4 (EDZ)		Gasolina	FWD	2429	105	143	04.01-06.07	■	
2.4 (EDZ)		Gasolina	FWD	2429	112	152	04.01-06.07	■	
2.4 Turbo (EDV)		Gasolina	FWD	2429	164	223	09.01-06.07	■	
2.7 V6 24V (EER)		Gasolina	FWD	2736	149	203	04.01-06.07	■	
2.7 V6 24V (EES)		Gasolina	FWD	2736	149	203	04.01-06.07	■	
SEBRING / CIRRUS (JR) 04.01-06.07							Convertible (Executive car-E Segment)		
2.0 (ECC)	-10/05	Gasolina	FWD	1996	104	141	04.01-06.07	■	
2.4 (EDZ)		Gasolina	FWD	2429	112	152	04.01-06.07	■	
2.4 Turbo (EDV)		Gasolina	FWD	2429	164	223	09.01-06.07	■	
2.7 V6 24V (EER)	10/05-	Gasolina	FWD	2736	149	203	04.01-06.07	■	
2.7 V6 24V (EES)	10/05-	Gasolina	FWD	2736	149	203	04.01-06.07	■	
2.7 Flexfuel (EER)		Gasol./Etanol	FWD	2736	149	203	09.02-12.06	■	
STRATUS (JX) 04.96-04.01							Convertible (Large family car-D Segment)		
2.0 LE (420X)	Rim 15	Gasolina	FWD	1996	96	131	06.96-04.01	■	
2.5 LX (625H)	Rim 15	Gasolina	FWD	2499	120	163	04.96-04.01	■	

LISTA DE APLICACIONES - BUYERS GUIDE

STRATUS (JA) 09.94-04.01					Saloon (Large family car-D Segment)			
2.0 LE (C00)	Rim 15	Gasolina	FWD	1996	96	131	12.95-04.01	■
2.0 16V (ECB)	Rim 15	Gasolina	FWD	1996	98	133	12.95-04.01	■
2.4 16V (EDZ)	Rim 15	Gasolina	FWD	2429	103	140	12.95-04.01	■
2.4 16V (EDZ)	Rim 15	Gasolina	FWD	2429	112	152	12.95-04.01	■
2.5 LX V6 (EEB)	Rim 15	Gasolina	FWD	2497	120	163	12.95-04.01	■
2.5 LX V6 (H00)	Rim 15	Gasolina	FWD	2497	120	163	12.95-04.01	■
2.5 V6 (H00)	Rim 15	Gasolina	FWD	2497	125	170	12.95-04.01	■
DODGE								
AVENGER (U.S.A.) 09.94-12.00					Coupe (Sports car-S Segment)			
2.5 (EEB)		Gasolina	FWD	2497	122	166	09.94-12.00	■
STRATUS 09.94-04.01					Saloon (Large family car-D Segment)			
2.4 16V (EDZ)		Gasolina	FWD	2429	103	140	12.95-04.01	■
2.4 16V (EDZ)		Gasolina	FWD	2429	112	152	12.95-04.01	■
2.5 V6 (EEB)		Gasolina	FWD	2497	125	170	12.95-04.01	■
STRATUS II 10.00-10.06					Saloon (Executive car-E Segment)			
2.4 SE (EDZ)		Gasolina	FWD	2429	105	143	10.00-09.02	■
2.4 STX (EDZ)		Gasolina	FWD	2429	112	152	10.00-10.06	■
2.7 VVT (EER)		Gasolina	FWD	2736	148	201	10.00-10.06	■