

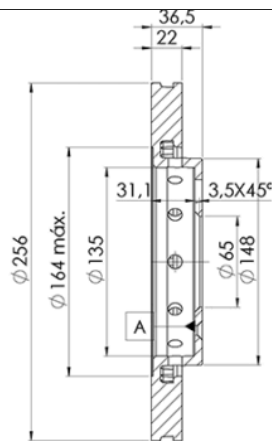
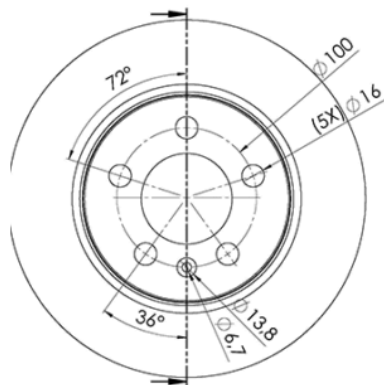
# LISTA DE APLICACIONES - BUYERS GUIDE

## 78BD4092-2



Weight: 8.916

O.E.M.	MAKE
8L0 698 601	VW
8L0 698 601 B	VW
8L0615601	AUDI (FAW)
8N0 615 601 B	VW



## 78BD4092-2

**E1 90R-02C0433/0059**



Ø256x22x37

MAKE
AUDI
SEAT
SKODA
VW



Trac.	CC	Kw	CV
-------	----	----	----



Front / Rear

### AUDI

						Hatchback (Compact executive car-D Segment)			
<b>A3 (8L1) 09.96-09.06</b>									
S3 quattro (AMK)	PR 1KF	Gasolina	4WD	1781	154	210	03.99-04.02	■	
S3 quattro (APY)	PR 1KF	Gasolina	4WD	1781	154	210	03.99-04.02	■	
S3 quattro (AUL)	PR 1KF	Gasolina	4WD	1781	154	210	03.99-04.02	■	
S3 quattro (BAM)	PR 1KF	Gasolina	4WD	1781	165	224	10.01-05.03	■	
<b>TT (8N9) 10.99-02.07</b>						Convertible (Sports car-S Segment)			
1.8 T quattro (AJQ)	PR 1KF, PR 2EH	Gasolina	4WD	1781	132	180	02.00-06.06	■	
1.8 T quattro (ARY)	PR 1KF, PR 2EH	Gasolina	4WD	1781	132	180	02.00-06.06	■	
1.8 T quattro (AUQ)	PR 1KF, PR 2EH	Gasolina	4WD	1781	132	180	02.00-06.06	■	
1.8 T quattro (BVR)	PR 1KF, PR 2EH	Gasolina	4WD	1781	140	190	09.05-06.06	■	
1.8 T quattro (APX)	PR 1KF, PR 2EH	Gasolina	4WD	1781	165	224	10.99-06.06	■	
1.8 T quattro (BAM)	PR 1KF, PR 2EH	Gasolina	4WD	1781	165	224	10.99-06.06	■	
1.8 T quattro (BEA)	PR 1KF, PR 2EH	Gasolina	4WD	1781	165	224	10.99-06.06	■	
3.2 VR6 quattro (BHE)	PR 1KF, PR 2EH	Gasolina	4WD	3189	184	250	07.03-06.06	■	
3.2 VR6 quattro (BPF)	PR 1KF, PR 2EH	Gasolina	4WD	3189	184	250	07.03-06.06	■	
<b>TT (8N3) 10.98-02.07</b>						Coupe (Sports car-S Segment)			
1.8 T quattro (AJQ)	PR 1KF, PR 2EH	Gasolina	4WD	1781	132	180	10.98-06.06	■	
1.8 T quattro (ARY)	PR 1KF, PR 2EH	Gasolina	4WD	1781	132	180	10.98-06.06	■	
1.8 T quattro (ATC)	PR 1KF, PR 2EH	Gasolina	4WD	1781	132	180	10.98-06.06	■	
1.8 T quattro (AUQ)	PR 1KF, PR 2EH	Gasolina	4WD	1781	132	180	10.98-06.06	■	
1.8 T quattro		Gasolina	4WD	1781	134	182	09.99-06.06	■	
1.8 T quattro (BVR)	PR 1KF, PR 2EH	Gasolina	4WD	1781	140	190	09.05-06.06	■	
1.8 T quattro (APX)	PR 1KF, PR 2EH	Gasolina	4WD	1781	165	224	10.98-06.06	■	

# LISTA DE APLICACIONES - BUYERS GUIDE

1.8 T quattro (BAM)	PR 1KF, PR 2EH	Gasolina	4WD	1781	165	224	10.98-06.06	■	
1.8 T quattro (BEA)	PR 1KF, PR 2EH	Gasolina	4WD	1781	165	224	10.98-06.06	■	
1.8 T quattro (BFV)	PR 1KF, PR 2EH	Gasolina	4WD	1781	180	245	03.05-06.06	■	
3.2 VR6 quattro (BHE)	PR 1KF, PR 2EH	Gasolina	4WD	3189	184	250	07.03-06.06	■	
3.2 VR6 quattro (BPF)	PR 1KF, PR 2EH	Gasolina	4WD	3189	184	250	07.03-06.06	■	
<b>SEAT</b>									
<b>LEON (1M1) 11.99-06.06</b>						<b>Hatchback (Compact car-C Segment)</b>			
1.4 16V (AHW)	-07/05, PR 1KY, PR 2EE	Gasolina	FWD	1390	55	75	11.99-06.06	■	
1.4 16V (APE)	-07/05, PR 1KY, PR 2EE	Gasolina	FWD	1390	55	75	11.99-06.06	■	
1.4 16V (AXP)	-07/05, PR 1KY, PR 2EE	Gasolina	FWD	1390	55	75	11.99-06.06	■	
1.4 16V (BCA)	-07/05, PR 1KY, PR 2EE	Gasolina	FWD	1390	55	75	11.99-06.06	■	
1.6 (AEH)	-07/05, PR 1KY, PR 2EE	Gasolina	FWD	1595	74	100	11.99-06.06	■	
1.6 (AKL)	-07/05, PR 1KY, PR 2EE	Gasolina	FWD	1595	74	100	11.99-06.06	■	
1.6 (BFQ)		Gasolina	FWD	1595	75	102	10.05-06.06	■	
1.6 16V (AUS)	-07/05, PR 1KY, PR 2EE	Gasolina	FWD	1598	77	105	09.00-06.06	■	
1.6 16V (AZD)	-07/05, PR 1KY, PR 2EE	Gasolina	FWD	1598	77	105	09.00-06.06	■	
1.6 16V (BCB)	-07/05, PR 1KY, PR 2EE	Gasolina	FWD	1598	77	105	09.00-06.06	■	
1.8 20V (AGN)	-07/05, PR 1KY, PR 2EE	Gasolina	FWD	1781	92	125	11.99-06.06	■	
1.8 20V (APG)	-07/05, PR 1KY, PR 2EE	Gasolina	FWD	1781	92	125	11.99-06.06	■	
1.8 20VT (APP)	-07/05, PR 1KY, PR 2EE	Gasolina	FWD	1781	132	180	11.99-06.06	■	
1.8 20VT (AUQ)	-07/05, PR 1KY, PR 2EE	Gasolina	FWD	1781	132	180	11.99-06.06	■	
1.8 20V T 4 (AJQ)	-07/05, PR 1KY, PR 2EE	Gasolina	4WD	1781	132	180	11.99-06.06	■	
1.8 20V T 4 (ARY)	-07/05, PR 1KY, PR 2EE	Gasolina	4WD	1781	132	180	11.99-06.06	■	
1.8 T Cupra R (AMK)	05/02-, -07/05, PR 1KY, PR 2EM	Gasolina	FWD	1781	154	209	02.02-06.06	■	
1.8 Turbo		Gasolina	FWD	1781	154	209	05.02-05.03	■	
1.8 T Cupra R (BAM)	-07/05, PR 1KY, PR 2EM	Gasolina	FWD	1781	165	225	07.03-06.06	■	
2.8 (BDE)		Gasolina	FWD	2792	150	204	05.02-06.04	■	
2.8 Cupra 4 (AUE)	-07/05, PR 1KY, PR 2EE	Gasolina	4WD	2792	150	204	02.01-06.06	■	
2.8 Cupra 4 (BDE)	-07/05, PR 1KY, PR 2EE	Gasolina	4WD	2792	150	204	02.01-06.06	■	
1.9 SDI (AQM)	-07/05, PR 1KY, PR 2EM	Diesel	FWD	1896	50	68	11.99-06.06	■	
1.9 TDI (AGR)	-07/05, PR 1KY, PR 2EE	Diesel	FWD	1896	66	90	11.99-06.06	■	
1.9 TDI (ALH)	-07/05, PR 1KY, PR 2EE	Diesel	FWD	1896	66	90	11.99-06.06	■	
1.9 TDI (AXR)		Diesel	FWD	1896	74	100	10.05-06.06	■	
1.9 TDI (AHF)	-07/05, PR 1KY, PR 2EE	Diesel	FWD	1896	81	110	11.99-06.06	■	
1.9 TDI (ASV)	-07/05, PR 1KY, PR 2EE	Diesel	FWD	1896	81	110	11.99-06.06	■	
1.9 TDI (ASZ)	-07/05, PR 1KY, PR 2EM	Diesel	FWD	1896	96	130	05.03-06.06	■	
1.9 TDI (ARL)	-07/05, PR 1KY, PR 2EE	Diesel	FWD	1896	110	150	09.00-06.06	■	
1.9 TDI Syncro (ARL)	-07/05, PR 1KY, PR 2EE	Diesel	4WD	1896	110	150	05.02-06.06	■	
<b>TOLEDO II (1M2) 10.98-05.06</b>						<b>Saloon (Compact car-C Segment)</b>			
1.4 16V (AHW)	PR 1KY, PR 2EE	Gasolina	FWD	1390	55	75	01.00-05.02	■	
1.4 16V (APE)	PR 1KY, PR 2EE	Gasolina	FWD	1390	55	75	01.00-05.02	■	
1.4 16V (AXP)	PR 1KY, PR 2EE	Gasolina	FWD	1390	55	75	01.00-05.02	■	
1.4 16V (BCA)	PR 1KY, PR 2EE	Gasolina	FWD	1390	55	75	01.00-05.02	■	
1.6 (AEH)	PR 1KY, PR 2EE	Gasolina	FWD	1595	74	100	10.98-07.04	■	
1.6 (AKL)	PR 1KY, PR 2EE	Gasolina	FWD	1595	74	100	10.98-07.04	■	
1.6 16V (AUS)	-09/04, PR 1KY, PR 2EE	Gasolina	FWD	1598	77	105	06.00-05.06	■	
1.6 16V (AZD)	-09/04, PR 1KY, PR 2EE	Gasolina	FWD	1598	77	105	06.00-05.06	■	
1.6 16V (BCB)	-09/04, PR 1KY, PR 2EE	Gasolina	FWD	1598	77	105	06.00-05.06	■	
1.8 20V (AGN)	PR 1KY, PR 2EE	Gasolina	FWD	1781	92	125	10.98-07.04	■	
1.8 20V (APG)	PR 1KY, PR 2EE	Gasolina	FWD	1781	92	125	10.98-07.04	■	

# LISTA DE APLICACIONES - BUYERS GUIDE

1.8		Gasolina	FWD	1781	132	179	05.01-04.04	■
1.8 20VT (APP)	PR 1KY, PR 2EE	Gasolina	FWD	1781	132	180	09.00-07.04	■
1.8 20VT (ARY)	PR 1KY, PR 2EE	Gasolina	FWD	1781	132	180	09.00-07.04	■
1.8 20VT (AUQ)	PR 1KY, PR 2EE	Gasolina	FWD	1781	132	180	09.00-07.04	■
1.8		Gasolina	FWD	1781	154	209	05.02-05.03	■
1.8		Gasolina	FWD	1781	165	224	05.03-10.05	■
2.3 V5 (AGZ)	PR 1KY, PR 2EE	Gasolina	FWD	2324	110	150	10.98-11.00	■
2.3 V5 20V (AQN)	PR 1KY, PR 2EE	Gasolina	FWD	2324	125	170	09.00-11.03	■
2.8		Gasolina	FWD	2792	150	204	05.02-04.04	■
1.9 SDI	PR 1KY, PR 2EE	Diesel	RWD	1896	50	68	11.99-06.04	■
1.9 TDI (AGR)	PR 1KY, PR 2EE	Diesel	FWD	1896	66	90	03.99-07.04	■
1.9 TDI (ALH)	PR 1KY, PR 2EE	Diesel	FWD	1896	66	90	03.99-07.04	■
1.9 TDI (AXR)		Diesel	FWD	1896	74	101	08.05-05.06	■
1.9 TDI (AHF)	PR 1KY, PR 2EE	Diesel	FWD	1896	81	110	10.98-07.04	■
1.9 TDI (ASV)	PR 1KY, PR 2EE	Diesel	FWD	1896	81	110	10.98-07.04	■
1.9 TDI (ASZ)	-09/04, PR 1KY, PR 2EE	Diesel	FWD	1896	96	130	05.03-05.06	■
1.9 TDI (ARL)	PR 1KY, PR 2EE	Diesel	FWD	1896	110	150	10.00-07.04	■
1.9 TDI 4Drive (ARL)		Diesel	4WD	1896	110	150	10.00-10.05	■

## SKODA

<b>OCTAVIA (1U2) 09.96-12.10</b>							<b>Hatchback (Compact car-C Segment)</b>	
RS 1.8 T (AUQ)	01/03-, PR 2ED	Gasolina	FWD	1781	132	180	05.01-01.06	■
<b>OCTAVIA Combi (1U5) 07.98-12.10</b>							<b>Estate (Compact car-C Segment)</b>	
RS 1.8 T (AUQ)	01/03-, PR 2ED	Gasolina	FWD	1781	132	180	08.02-01.06	■

## VW

<b>BORA / JETTA IV (1J2) 10.98-12.13</b>							<b>Saloon (Compact car-C Segment)</b>	
1.4 16V (AHW)	-12/04, PR 1KV, PR 1KY, PR 2EE	Gasolina	FWD	1390	55	75	03.00-05.05	■
1.4 16V (AKQ)	-12/04, PR 1KV, PR 1KY, PR 2EE	Gasolina	FWD	1390	55	75	03.00-05.05	■
1.4 16V (APE)	-12/04, PR 1KV, PR 1KY, PR 2EE	Gasolina	FWD	1390	55	75	03.00-05.05	■
1.4 16V (AXP)	-12/04, PR 1KV, PR 1KY, PR 2EE	Gasolina	FWD	1390	55	75	03.00-05.05	■
1.4 16V (BCA)	-12/04, PR 1KV, PR 1KY, PR 2EE	Gasolina	FWD	1390	55	75	03.00-05.05	■
1.6 (AEH)	-12/04, PR 1KV, PR 1KY, PR 2EE	Gasolina	FWD	1595	74	101	10.98-05.05	■
1.6 (AKL)	-12/04, PR 1KV, PR 1KY, PR 2EE	Gasolina	FWD	1595	74	101	10.98-05.05	■
1.6 (APF)	-12/04, PR 1KV, PR 1KY, PR 2EE	Gasolina	FWD	1595	74	101	10.98-05.05	■
1.6 (AVU)	-12/04, PR 1KV, PR 1KY, PR 2EE	Gasolina	FWD	1595	75	102	08.00-05.05	■
1.6 (BFQ)	-12/04, PR 1KV, PR 1KY, PR 2EE	Gasolina	FWD	1595	75	102	08.00-05.05	■
1.6		Gasolina	FWD	1595	78	107	06.02-10.04	■
1.6 16V (ATN)	-12/04, PR 1KV, PR 1KY, PR 2EE	Gasolina	FWD	1598	77	105	05.00-05.05	■
1.6 16V (AUS)	-12/04, PR 1KV, PR 1KY, PR 2EE	Gasolina	FWD	1598	77	105	05.00-05.05	■
1.6 16V (AZD)	-12/04, PR 1KV, PR 1KY, PR 2EE	Gasolina	FWD	1598	77	105	05.00-05.05	■
1.6 16V (BCB)	-12/04, PR 1KV, PR 1KY, PR 2EE	Gasolina	FWD	1598	77	105	05.00-05.05	■
1.6 FSI (BAD)	-12/04, PR 1KV, PR 1KY, PR 2EE	Gasolina	FWD	1598	81	110	01.02-05.05	■
1.8 (AGN)	-12/04, PR 1KV, PR 1KY, PR 2EE	Gasolina	FWD	1781	92	125	10.98-05.05	■

## LISTA DE APLICACIONES - BUYERS GUIDE

1.8 (BAF)	-12/04, PR 1KV, PR 1KY, PR 2EE	Gasolina	FWD	1781	92	125	10.98-05.05	■
1.8 4motion (AGN)	-12/04, PR 1KV, PR 1KY, PR 2EE	Gasolina	4WD	1781	92	125	02.99-05.05	■
1.8 T (AGU)	09/00-, -12/04, PR 1KV, PR 1KY, PR 2EE	Gasolina	FWD	1781	110	150	05.00-05.05	■
1.8 T (ARX)	09/00-, -12/04, PR 1KV, PR 1KY, PR 2EE	Gasolina	FWD	1781	110	150	05.00-05.05	■
1.8 T (AUM)	09/00-, -12/04, PR 1KV, PR 1KY, PR 2EE	Gasolina	FWD	1781	110	150	05.00-05.05	■
1.8 T (AWD)	09/00-, -12/04, PR 1KV, PR 1KY, PR 2EE	Gasolina	FWD	1781	110	150	05.00-05.05	■
1.8 T (AWW)	09/00-, -12/04, PR 1KV, PR 1KY, PR 2EE	Gasolina	FWD	1781	110	150	05.00-05.05	■
1.8 T (AUQ)	05/02-, -12/04, PR 1KV, PR 1KY, PR 2EE	Gasolina	FWD	1781	132	180	03.02-05.05	■
1.8 T (AWP)	05/02-, -12/04, PR 1KV, PR 1KY, PR 2EE	Gasolina	FWD	1781	132	180	03.02-05.05	■
1.8 Turbo		Gasolina	FWD	1781	132	179	01.05-12.14	■
2.0 (AEG)	-12/04, PR 1KV, PR 1KY, PR 2EE	Gasolina	FWD	1984	85	115	10.98-12.13	■
2.0 (APK)	-12/04, PR 1KV, PR 1KY, PR 2EE	Gasolina	FWD	1984	85	115	10.98-12.13	■
2.0 (AQY)	-12/04, PR 1KV, PR 1KY, PR 2EE	Gasolina	FWD	1984	85	115	10.98-12.13	■
2.0 (AVH)	-12/04, PR 1KV, PR 1KY, PR 2EE	Gasolina	FWD	1984	85	115	10.98-12.13	■
2.0 (AZG)	-12/04, PR 1KV, PR 1KY, PR 2EE	Gasolina	FWD	1984	85	115	10.98-12.13	■
2.0 (AZH)	-12/04, PR 1KV, PR 1KY, PR 2EE	Gasolina	FWD	1984	85	115	10.98-12.13	■
2.0 (AZJ)	-12/04, PR 1KV, PR 1KY, PR 2EE	Gasolina	FWD	1984	85	115	10.98-12.13	■
2.0 (BBW)	-12/04, PR 1KV, PR 1KY, PR 2EE	Gasolina	FWD	1984	85	115	10.98-12.13	■
2.0 (BER)	-12/04, PR 1KV, PR 1KY, PR 2EE	Gasolina	FWD	1984	85	115	10.98-12.13	■
2.0 (BEV)	-12/04, PR 1KV, PR 1KY, PR 2EE	Gasolina	FWD	1984	85	115	10.98-12.13	■
2.0 (BHP)	-12/04, PR 1KV, PR 1KY, PR 2EE	Gasolina	FWD	1984	85	115	10.98-12.13	■
2.0 (CBPA)	-12/04, PR 1KV, PR 1KY, PR 2EE	Gasolina	FWD	1984	85	115	10.98-12.13	■
2.0 (CFEA)	-12/04, PR 1KV, PR 1KY, PR 2EE	Gasolina	FWD	1984	85	115	10.98-12.13	■
2.0 (CBPA)		Gasolina	FWD	1984	85	116	01.05-12.14	■
2.0 4motion (AZH)	-12/04, PR 1KV, PR 1KY, PR 2EE	Gasolina	4WD	1984	85	115	04.00-05.05	■
2.0 4motion (AZJ)	-12/04, PR 1KV, PR 1KY, PR 2EE	Gasolina	4WD	1984	85	115	04.00-05.05	■
2.3 V5 (AGZ)	PR 1KV, PR 1KY, PR 2EE	Gasolina	FWD	2324	110	150	10.98-10.00	■
2.3 V5 4motion (AGZ)	02/99-, PR 1KV, PR 1KY, PR 2EE	Gasolina	4WD	2324	110	150	12.98-10.00	■
2.3 V5 (AQN)	-12/04, PR 1KV, PR 1KY, PR 2EE	Gasolina	FWD	2324	125	170	10.00-05.05	■
2.3 V5 4motion (AQN)	-12/04, PR 1KV, PR 1KY, PR 2EE	Gasolina	4WD	2324	125	170	10.00-05.05	■
2.8 VR6		Gasolina	FWD	2792	130	177	11.98-07.05	■
2.8 VR6		Gasolina	FWD	2792	147	200	02.02-07.05	■
2.8 V6 4motion (AQP)	05/99-, -12/04, PR 1KV, PR 1KY, PR 2EE	Gasolina	4WD	2792	150	204	03.99-05.05	■
2.8 V6 4motion (AUE)	05/99-, -12/04, PR 1KV, PR 1KY, PR 2EE	Gasolina	4WD	2792	150	204	03.99-05.05	■
2.8 V6 4motion (BDE)	05/99-, -12/04, PR 1KV, PR 1KY, PR 2EE	Gasolina	4WD	2792	150	204	03.99-05.05	■
2.0 Total Flex (CFEA)		Gasol./Etanol	FWD	1984	85	116	02.09-07.10	■
2.0 Total Flex		Gasol./Etanol	FWD	1984	88	120	02.09-08.10	■

# LISTA DE APLICACIONES - BUYERS GUIDE

1.9 SDI (AGP)	-12/04, PR 1KV, PR 1KY, PR 2EE	Diesel	FWD	1896	50	68	10.98-05.05	■	
1.9 SDI (AQM)	-12/04, PR 1KV, PR 1KY, PR 2EE	Diesel	FWD	1896	50	68	10.98-05.05	■	
1.9 TDI (AGR)	PR 1KV, PR 1KY, PR 2EE	Diesel	FWD	1896	66	90	10.98-05.05	■	
1.9 TDI (ALH)	PR 1KV, PR 1KY, PR 2EE	Diesel	FWD	1896	66	90	10.98-05.05	■	
1.9 TDI 4motion (AGR)	PR 1KV, PR 1KY, PR 2EE	Diesel	4WD	1896	66	90	11.98-04.02	■	
1.9 TDI (ATD)	-12/04, PR 1KV, PR 1KY, PR 2EE	Diesel	FWD	1896	74	101	09.00-05.05	■	
1.9 TDI (AXR)	-12/04, PR 1KV, PR 1KY, PR 2EE	Diesel	FWD	1896	74	101	09.00-05.05	■	
1.9 TDI (BEW)	-12/04, PR 1KV, PR 1KY, PR 2EE	Diesel	FWD	1896	74	101	09.00-05.05	■	
1.9 TDI 4motion (ATD)	-12/04, PR 1KV, PR 1KY, PR 2EE	Diesel	4WD	1896	74	101	09.00-05.05	■	
1.9 TDI (AHF)	PR 1KV, PR 1KY, PR 2EE	Diesel	FWD	1896	81	110	10.98-06.01	■	
1.9 TDI (ASV)	PR 1KV, PR 1KY, PR 2EE	Diesel	FWD	1896	81	110	10.98-06.01	■	
1.9 TDI (AJM)	02/99-, -06/01, PR 1KV, PR 1KY, PR 2EE	Diesel	FWD	1896	85	115	12.98-01.02	■	
1.9 TDI (AUY)	02/99-, -06/01, PR 1KV, PR 1KY, PR 2EE	Diesel	FWD	1896	85	115	12.98-01.02	■	
1.9 TDI 4motion (AJM)	PR 1KV, PR 1KY, PR 2EE	Diesel	4WD	1896	85	115	02.99-06.01	■	
1.9 TDI 4motion (AUY)	PR 1KV, PR 1KY, PR 2EE	Diesel	4WD	1896	85	115	02.99-06.01	■	
1.9 TDI (ASZ)	04/01-, -12/04, PR 1KV, PR 1KY, PR 2EE	Diesel	FWD	1896	96	130	11.00-05.05	■	
1.9 TDI 4motion (ASZ)	04/01-, -12/04, PR 1KV, PR 1KY, PR 2EE	Diesel	4WD	1896	96	130	11.00-05.05	■	
1.9 TDI (ARL)	10/00-, -12/04, PR 1KV, PR 1KY, PR 2EE	Diesel	FWD	1896	110	150	05.00-05.05	■	
1.9 TDI 4motion (ARL)	10/00-, -12/04, PR 1KV, PR 1KY, PR 2EE	Diesel	4WD	1896	110	150	05.00-05.05	■	
<b>BORA Variant / JETTA IV (1J6) 05.99-05.05</b>					<b>Estate (Compact car-C Segment)</b>				
1.4 16V (AHW)	-12/04, PR 1KV, PR 1KY, PR 2EE	Gasolina	FWD	1390	55	75	09.01-05.05	■	
1.4 16V (AXP)	-12/04, PR 1KV, PR 1KY, PR 2EE	Gasolina	FWD	1390	55	75	09.01-05.05	■	
1.4 16V (BCA)	-12/04, PR 1KV, PR 1KY, PR 2EE	Gasolina	FWD	1390	55	75	09.01-05.05	■	
1.6 (AEH)	-12/04, PR 1KU, PR 1KY, PR 2EE	Gasolina	FWD	1595	74	100	05.99-05.05	■	
1.6 (AKL)	-12/04, PR 1KU, PR 1KY, PR 2EE	Gasolina	FWD	1595	74	100	05.99-05.05	■	
1.6 (APF)	-12/04, PR 1KU, PR 1KY, PR 2EE	Gasolina	FWD	1595	74	100	05.99-05.05	■	
1.6 (AVU)	-12/04, PR 1KU, PR 1KY, PR 2EE	Gasolina	FWD	1595	75	102	08.00-05.05	■	
1.6 (BFQ)	-12/04, PR 1KU, PR 1KY, PR 2EE	Gasolina	FWD	1595	75	102	08.00-05.05	■	
1.6 16V (ATN)	-12/04, PR 1KU, PR 1KY, PR 2EE	Gasolina	FWD	1598	77	105	02.00-05.05	■	
1.6 16V (AUS)	-12/04, PR 1KU, PR 1KY, PR 2EE	Gasolina	FWD	1598	77	105	02.00-05.05	■	
1.6 16V (AZD)	-12/04, PR 1KU, PR 1KY, PR 2EE	Gasolina	FWD	1598	77	105	02.00-05.05	■	
1.6 16V (BCB)	-12/04, PR 1KU, PR 1KY, PR 2EE	Gasolina	FWD	1598	77	105	02.00-05.05	■	
1.6 FSI (BAD)	-12/04, PR 1KU, PR 1KY, PR 2EE	Gasolina	FWD	1598	81	110	01.02-05.05	■	
1.8 4motion (AGN)	-12/04, PR 1KU, PR 1KY, PR 2EE	Gasolina	4WD	1781	92	125	05.99-05.05	■	
1.8 T (AGU)	09/00-, -12/04, PR 1KU, PR 1KY, PR 2EE	Gasolina	FWD	1781	110	150	05.00-05.05	■	
1.8 T (ARX)	09/00-, -12/04, PR 1KU, PR 1KY, PR 2EE	Gasolina	FWD	1781	110	150	05.00-05.05	■	
1.8 T (AUM)	09/00-, -12/04, PR 1KU, PR 1KY, PR 2EE	Gasolina	FWD	1781	110	150	05.00-05.05	■	
1.8 T (AWD)	09/00-, -12/04, PR 1KU, PR 1KY, PR 2EE	Gasolina	FWD	1781	110	150	05.00-05.05	■	

# LISTA DE APLICACIONES - BUYERS GUIDE

1.8 T (AWW)	09/00-, -12/04, PR 1KU, PR 1KY, PR 2EE	Gasolina	FWD	1781	110	150	05.00-05.05	■	
1.8 T (AUQ)	-12/04, PR 1KU, PR 1KY, PR 2EE	Gasolina	FWD	1781	132	180	05.02-05.05	■	
1.8 T (AWP)	-12/04, PR 1KU, PR 1KY, PR 2EE	Gasolina	FWD	1781	132	180	05.02-05.05	■	
2.0 (APK)	-12/04, PR 1KU, PR 1KY, PR 2EE	Gasolina	FWD	1984	85	115	05.99-05.05	■	
2.0 (AQY)	-12/04, PR 1KU, PR 1KY, PR 2EE	Gasolina	FWD	1984	85	115	05.99-05.05	■	
2.0 (AVH)	-12/04, PR 1KU, PR 1KY, PR 2EE	Gasolina	FWD	1984	85	115	05.99-05.05	■	
2.0 (AZG)	-12/04, PR 1KU, PR 1KY, PR 2EE	Gasolina	FWD	1984	85	115	05.99-05.05	■	
2.0 (AZH)	-12/04, PR 1KU, PR 1KY, PR 2EE	Gasolina	FWD	1984	85	115	05.99-05.05	■	
2.0 (AZJ)	-12/04, PR 1KU, PR 1KY, PR 2EE	Gasolina	FWD	1984	85	115	05.99-05.05	■	
2.0 (BEV)	-12/04, PR 1KU, PR 1KY, PR 2EE	Gasolina	FWD	1984	85	115	05.99-05.05	■	
2.0 4motion (AZH)	-12/04, PR 1KU, PR 1KY, PR 2EE	Gasolina	4WD	1984	85	115	04.00-05.05	■	
2.0 4motion (AZJ)	-12/04, PR 1KU, PR 1KY, PR 2EE	Gasolina	4WD	1984	85	115	04.00-05.05	■	
2.0 4motion (ATF)	04/00-, PR 1KU, PR 1KY, PR 2EE	Gasolina	4WD	1984	88	120	12.99-05.03	■	
2.3 V5 (AGZ)	PR 1KU, PR 1KY, PR 2EE	Gasolina	FWD	2324	110	150	05.99-10.00	■	
2.3 V5 4motion (AGZ)	PR 1KU, PR 1KY, PR 2EE	Gasolina	4WD	2324	110	150	05.99-10.00	■	
2.3 V5 (AQN)	-12/04, PR 1KU, PR 1KY, PR 2EE	Gasolina	FWD	2324	125	170	10.00-05.05	■	
2.3 V5 4motion (AQN)	-12/04, PR 1KU, PR 1KY, PR 2EE	Gasolina	4WD	2324	125	170	10.00-05.05	■	
2.8 V6 4motion (AQP)	-12/04, PR 1KU, PR 1KY, PR 2EE	Gasolina	4WD	2792	150	204	05.99-05.05	■	
2.8 V6 4motion (AUE)	-12/04, PR 1KU, PR 1KY, PR 2EE	Gasolina	4WD	2792	150	204	05.99-05.05	■	
2.8 V6 4motion (BDE)	-12/04, PR 1KU, PR 1KY, PR 2EE	Gasolina	4WD	2792	150	204	05.99-05.05	■	
1.9 TDI (ATD)	-12/04, PR 1KU, PR 1KY, PR 2EE	Diesel	FWD	1896	74	101	09.00-05.05	■	
1.9 TDI (AXR)	-12/04, PR 1KU, PR 1KY, PR 2EE	Diesel	FWD	1896	74	101	09.00-05.05	■	
1.9 TDI (BEW)	-12/04, PR 1KU, PR 1KY, PR 2EE	Diesel	FWD	1896	74	101	09.00-05.05	■	
1.9 TDI 4motion (ATD)	-12/04, PR 1KU, PR 1KY, PR 2EE	Diesel	4WD	1896	74	101	09.00-05.05	■	
1.9 TDI (AHF)	PR 1KU, PR 1KY, PR 2EE	Diesel	FWD	1896	81	110	05.99-06.01	■	
1.9 TDI (ASV)	PR 1KU, PR 1KY, PR 2EE	Diesel	FWD	1896	81	110	05.99-06.01	■	
1.9 TDI (AJM)	PR 1KU, PR 1KY, PR 2EE	Diesel	FWD	1896	85	115	05.99-06.01	■	
1.9 TDI (AUY)	PR 1KU, PR 1KY, PR 2EE	Diesel	FWD	1896	85	115	05.99-06.01	■	
1.9 TDI 4motion (AJM)	PR 1KU, PR 1KY, PR 2EE	Diesel	4WD	1896	85	115	05.99-06.01	■	
1.9 TDI 4motion (AUY)	PR 1KU, PR 1KY, PR 2EE	Diesel	4WD	1896	85	115	05.99-06.01	■	
1.9 TDI (ASZ)	04/01-, -12/04, PR 1KU, PR 1KY, PR 2EE	Diesel	FWD	1896	96	130	11.00-05.05	■	
1.9 TDI 4motion (ASZ)	04/01-, -12/04, PR 1KU, PR 1KY, PR 2EE	Diesel	4WD	1896	96	130	11.00-05.05	■	
1.9 TDI (ARL)	-12/04, PR 1KU, PR 1KY, PR 2EE	Diesel	FWD	1896	110	150	05.01-05.05	■	
1.9 TDI 4motion (ARL)	-12/04, PR 1KU, PR 1KY, PR 2EE	Diesel	4WD	1896	110	150	05.01-05.05	■	
<b>GOLF IV (1J1) 08.97-04.08</b>							<b>Hatchback (Compact car-C Segment)</b>		
1.4 16V (AHW)	-10/03, PR 1KY	Gasolina	FWD	1390	55	75	10.97-05.04	■	
1.4 16V (AKQ)	-10/03, PR 1KY	Gasolina	FWD	1390	55	75	10.97-05.04	■	
1.4 16V (APE)	-10/03, PR 1KY	Gasolina	FWD	1390	55	75	10.97-05.04	■	
1.4 16V (AXP)	-10/03, PR 1KY	Gasolina	FWD	1390	55	75	10.97-05.04	■	

# LISTA DE APLICACIONES - BUYERS GUIDE

1.4 16V (BCA)	-10/03, PR 1KY	Gasolina	FWD	1390	55	75	10.97-05.04	■
1.6 (AEH)	10/97-, -10/03, PR 1KY	Gasolina	FWD	1595	74	100	08.97-05.04	■
1.6 (AKL)	10/97-, -10/03, PR 1KY	Gasolina	FWD	1595	74	100	08.97-05.04	■
1.6 (APF)	10/97-, -10/03, PR 1KY	Gasolina	FWD	1595	74	100	08.97-05.04	■
1.6 (AVU)	-10/03, PR 1KY	Gasolina	FWD	1595	75	102	08.00-06.05	■
1.6 (BFQ)	-10/03, PR 1KY	Gasolina	FWD	1595	75	102	08.00-06.05	■
1.6 (BAH)		Gasolina	FWD	1598	74	101	02.01-03.07	■
1.6 16V (ATN)	-10/03, PR 1KY	Gasolina	FWD	1598	77	105	02.00-06.05	■
1.6 16V (AUS)	-10/03, PR 1KY	Gasolina	FWD	1598	77	105	02.00-06.05	■
1.6 16V (AZD)	-10/03, PR 1KY	Gasolina	FWD	1598	77	105	02.00-06.05	■
1.6 16V (BCB)	-10/03, PR 1KY	Gasolina	FWD	1598	77	105	02.00-06.05	■
1.6 FSI (BAD)	-10/03, PR 1KY	Gasolina	FWD	1598	81	110	01.02-06.05	■
1.8 (AGN)	10/97-, -10/03, PR 1KY	Gasolina	FWD	1781	92	125	08.97-06.05	■
1.8 T GTI (AGU)	10/97-, -10/03, PR 1KY	Gasolina	FWD	1781	110	150	08.97-06.05	■
1.8 T GTI (AQA)	10/97-, -10/03, PR 1KY	Gasolina	FWD	1781	110	150	08.97-06.05	■
1.8 T GTI (ARZ)	10/97-, -10/03, PR 1KY	Gasolina	FWD	1781	110	150	08.97-06.05	■
1.8 T GTI (AUM)	10/97-, -10/03, PR 1KY	Gasolina	FWD	1781	110	150	08.97-06.05	■
1.8 T GTI (AWD)	10/97-, -10/03, PR 1KY	Gasolina	FWD	1781	110	150	08.97-06.05	■
1.8 T GTI (AWW)	10/97-, -10/03, PR 1KY	Gasolina	FWD	1781	110	150	08.97-06.05	■
1.8 T GTI (AUQ)	-10/03	Gasolina	FWD	1781	132	180	08.01-06.05	■
1.8 T GTI (AWP)	-10/03	Gasolina	FWD	1781	132	180	08.01-06.05	■
2.0 (AEG)	08/98-, -10/03, PR 1KY	Gasolina	FWD	1984	85	115	07.98-05.04	■
2.0 (APK)	08/98-, -10/03, PR 1KY	Gasolina	FWD	1984	85	115	07.98-05.04	■
2.0 (AQY)	08/98-, -10/03, PR 1KY	Gasolina	FWD	1984	85	115	07.98-05.04	■
2.0 (AVH)	08/98-, -10/03, PR 1KY	Gasolina	FWD	1984	85	115	07.98-05.04	■
2.0 (AZG)	08/98-, -10/03, PR 1KY	Gasolina	FWD	1984	85	115	07.98-05.04	■
2.0 (AZJ)	08/98-, -10/03, PR 1KY	Gasolina	FWD	1984	85	115	07.98-05.04	■
2.0 (BER)	08/98-, -10/03, PR 1KY	Gasolina	FWD	1984	85	115	07.98-05.04	■
2.0 (BEV)	08/98-, -10/03, PR 1KY	Gasolina	FWD	1984	85	115	07.98-05.04	■
2.3 V5 (AGZ)	PR 1KY, 10/97-	Gasolina	FWD	2324	110	150	08.97-10.00	■
2.3 V5 4motion (AGZ)	PR 1KU, PR 2EE, PR 2EL	Gasolina	4WD	2324	110	150	12.98-10.00	■
2.3 V5 (AQN)	-10/03, PR 1KY	Gasolina	FWD	2324	125	170	10.00-06.05	■
2.3 V5 4motion (AQN)	-10/03, PR 1KU, PR 2EE, PR 2EL	Gasolina	4WD	2324	125	170	10.00-06.05	■
2.8 VR6		Gasolina	FWD	2792	130	177	01.99-12.02	■
2.8 VR6		Gasolina	FWD	2792	147	200	03.02-06.05	■
2.8 VR6 4motion (AQP)	-10/03, PR 1KU, PR 2EE, PR 2EL	Gasolina	4WD	2792	150	204	03.99-06.05	■
2.8 VR6 4motion (AUE)	-10/03, PR 1KU, PR 2EE, PR 2EL	Gasolina	4WD	2792	150	204	03.99-06.05	■
2.8 VR6 4motion (BDE)	-10/03, PR 1KU, PR 2EE, PR 2EL	Gasolina	4WD	2792	150	204	03.99-06.05	■
3.2 R32 4motion (BFH)	-10/03, PR 1KU, PR 2EE, PR 2EL	Gasolina	4WD	3189	177	241	09.02-06.05	■
3.2 R32 4motion (BJS)	-10/03, PR 1KU, PR 2EE, PR 2EL	Gasolina	4WD	3189	177	241	09.02-06.05	■
3.2 R32 4motion (BML)	-10/03, PR 1KU, PR 2EE, PR 2EL	Gasolina	4WD	3189	177	241	09.02-06.05	■
2.0 BiFuel (BEH)		Gasol./Gas (CNG)	FWD	1984	85	116	05.02-05.03	■
1.6 TotalFlex		Gasol./Etanol	FWD	1598	76	103	02.01-04.08	■
1.9 SDI (AGP)	10/97-, -10/03, PR 1KY	Diesel	FWD	1896	50	68	08.97-06.05	■
1.9 SDI (AQM)	10/97-, -10/03, PR 1KY	Diesel	FWD	1896	50	68	08.97-06.05	■
1.9 TD		Diesel	FWD	1896	55	75	10.97-09.99	■
1.9 TDI (AGR)	-06/01, PR 1KY	Diesel	FWD	1896	66	90	10.97-05.04	■

# LISTA DE APLICACIONES - BUYERS GUIDE

1.9 TDI (ALH)	-06/01, PR 1KY	Diesel	FWD	1896	66	90	10.97-05.04	■	
1.9 TDI (ATD)	PR 1KY	Diesel	FWD	1896	74	101	09.00-06.05	■	
1.9 TDI (AXR)	PR 1KY	Diesel	FWD	1896	74	101	09.00-06.05	■	
1.9 TDI (BEW)	PR 1KY	Diesel	FWD	1896	74	101	09.00-06.05	■	
1.9 TDI (AHF)	10/97-, -10/03, PR 1KY	Diesel	FWD	1896	81	110	08.97-05.04	■	
1.9 TDI (ASV)	10/97-, -10/03, PR 1KY	Diesel	FWD	1896	81	110	08.97-05.04	■	
1.9 TDI (AJM)	05/99-, PR 1KY	Diesel	FWD	1896	85	115	12.98-06.01	■	
1.9 TDI (AUJ)	05/99-, PR 1KY	Diesel	FWD	1896	85	115	12.98-06.01	■	
1.9 TDI (ASZ)	04/01-, -10/03, PR 1KY	Diesel	FWD	1896	96	130	11.00-06.05	■	
1.9 TDI (ARL)	09/00-, -10/03, PR 1KY	Diesel	FWD	1896	110	150	05.00-06.05	■	
<b>GOLF IV VAN Variant / JETTA IV (1J5) 05.99-06.06</b>							<b>Estate Van (Compact car-C Segment)</b>		
1.9 TDI (AJM)	PR 2EE, PR 2EL	Diesel	FWD	1896	85	116	05.99-04.02	■	
<b>GOLF IV Variant / JETTA IV (1J5) 05.99-06.06</b>							<b>Estate (Compact car-C Segment)</b>		
1.8 4motion (AGN)	PR 2EE, PR 2EL	Gasolina	4WD	1781	92	125	05.99-06.06	■	
1.8 T		Gasolina	FWD	1781	127	173	09.99-12.01	■	
2.0 4motion (AZH)	PR 2EE, PR 2EL	Gasolina	4WD	1984	85	115	10.00-06.06	■	
2.0 4motion (AZJ)	PR 2EE, PR 2EL	Gasolina	4WD	1984	85	115	10.00-06.06	■	
2.0 4motion (ATF)	04/00-, PR 2EE, PR 2EL	Gasolina	4WD	1984	88	120	12.99-06.06	■	
2.3 V5 (AGZ)		Gasolina	FWD	2324	110	150	05.99-06.06	■	
2.3 V5 4motion (AGZ)	PR 2EE, PR 2EL	Gasolina	4WD	2324	110	150	05.99-06.06	■	
2.3 V5 (AQN)		Gasolina	FWD	2324	125	170	10.00-06.06	■	
2.3 V5 4motion (AQN)	PR 2EE, PR 2EL	Gasolina	4WD	2324	125	170	10.00-06.06	■	
2.8 V6		Gasolina	FWD	2792	128	174	09.00-12.04	■	
2.8 V6 4motion (AQP)		Gasolina	4WD	2792	150	204	05.99-06.06	■	
2.8 V6 4motion (AUE)		Gasolina	4WD	2792	150	204	05.99-06.06	■	
2.8 V6 4motion (BDE)		Gasolina	4WD	2792	150	204	05.99-06.06	■	
1.9 TDI 4motion (AGR)	PR 2EE, PR 2EL	Diesel	4WD	1896	66	90	05.99-04.02	■	
1.9 TDI 4motion (ATD)	PR 2EE, PR 2EL	Diesel	4WD	1896	74	101	09.00-06.06	■	
1.9 TDI 4motion (AJM)	PR 2EE, PR 2EL	Diesel	4WD	1896	85	115	12.99-04.01	■	
1.9 TDI 4motion (ASZ)	04/01-, PR 2EE, PR 2EL	Diesel	4WD	1896	96	130	11.00-06.06	■	
1.9 TDI 4motion (ARL)	PR 2EE, PR 2EL	Diesel	4WD	1896	110	150	05.02-06.05	■	
<b>GOLF V (9B3) 03.06-</b>							<b>Hatchback (Compact car-C Segment)</b>		
1.8 GTI (AUQ)		Gasolina	FWD	1781	132	179	01.07-12.10	■	
1.8 GTI		Gasolina	FWD	1781	142	193	04.07-12.09	■	
<b>GOLF IV Furgoneta (1J1) 10.97-05.04</b>							<b>Hatchback Van (Compact car-C Segment)</b>		
1.9 SDI (AQM)		Diesel	FWD	1896	50	68	11.98-05.04	■	
1.9 TDI (AGR)		Diesel	FWD	1896	66	90	05.00-09.02	■	
1.9 TDI (AHF)		Diesel	FWD	1896	81	110	10.97-05.04	■	
1.9 TDI (ASZ)		Diesel	FWD	1896	96	130	04.01-05.04	■	
<b>JETTA V / BORA / VENTO (1K2) 09.04-12.13</b>							<b>Saloon (Compact car-C Segment)</b>		
2.0		Gasolina	FWD	1984	85	116	05.05-10.10	■	
<b>NEW BEETLE / BETTLE / NOVO FUSCA (9C1, 1C1) 01.98-12.13</b>							<b>Hatchback (Compact car-C Segment)</b>		
1.8 T (AWP)	PR 1KY	Gasolina	FWD	1781	132	180	11.01-06.05	■	
1.8 T (BNU)	PR 1KY	Gasolina	FWD	1781	132	180	11.01-06.05	■	
2.3 V5 (AQN)	-05/05, PR 1KY	Gasolina	FWD	2324	125	170	10.00-09.10	■	
3.2 RSI 4motion (1C9) (AXJ)		Gasolina	4WD	3188	165	224	04.00-05.01	■	