

LISTA DE APLICACIONES - BUYERS GUIDE

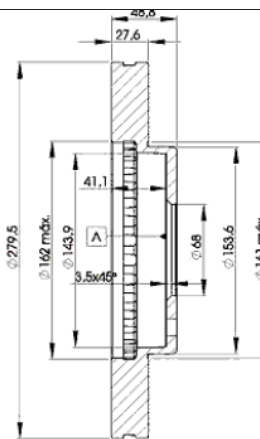
78BD4103-2



8 424073 145581

Weight: 14.944

O.E.M.	MAKE
40206-3Y502	NISSAN
40206-4U100	NISSAN
40206-4U101	NISSAN
40206-4U103	NISSAN
40206-4U107	NISSAN



78BD4103-2

E1 90R-02C0452/0078



Ø280x28x44

MAKE
INFINITI
NISSAN



Trac.	CC	Kw	CV		
					Front / Rear

INFINITI

I30 01.97-						Saloon (Executive car-E Segment)		
3.0 (VQ30DE)		Gasolina	FWD	2988	142	193	01.97-	■
J30 01.92-12.97						Saloon (Luxury car-F Segment)		
3.0 (VG30DE)		Gasolina	RWD	2960	157	213	01.92-12.97	■

NISSAN

ALMERA II TINO (V10) 12.98-02.06						MPV (Compact MPV-M1 Segment)		
1.8 (QG18DE)		Gasolina	FWD	1769	84	114	08.00-02.06	■
1.8 (QG18DE)		Gasolina	FWD	1769	85	116	12.02-02.06	■
1.8 (QG18DE)		Gasolina	FWD	1769	88	120	12.98-02.03	■
2.0 (SR20DE)		Gasolina	FWD	1998	100	136	08.00-01.03	■
2.2 dCi (YD22DDT)		Diesel	FWD	2184	82	112	09.03-02.06	■
2.2 dCi (YD22DDTI)		Diesel	FWD	2184	84	115	08.00-02.06	■
2.2 dCi (YD22DDTI)		Diesel	FWD	2184	100	136	09.03-02.06	■
CEFIRO III-IV / MAXIMA (A33) 01.99-12.07						Saloon (Sports car-S Segment)		
2.0 (VQ20DE)		Gasolina	FWD	1995	103	140	01.00-09.03	■
2.5		Gasolina	FWD	2496	154	209	01.00-09.03	■
3.0 (VQ30DE)		Gasolina	FWD	2988	147	200	01.00-09.03	■
MAXIMA IV QX (A32) 03.94-08.00						Saloon (Sports car-S Segment)		
3.0 (VG30DE)		Gasolina	FWD	2960	142	193	03.94-03.99	■
MAXIMA V QX (A33) 04.99-11.03						Saloon (Sports car-S Segment)		
3.0 V6 24V		Gasolina	FWD	2988	157	214	12.99-11.03	■
3.5 (VQ35DE)		Gasolina	FWD	3498	188	256	08.01-02.03	■

LISTA DE APLICACIONES - BUYERS GUIDE

3.5 (VQ35DE)	Gasolina	FWD	3498	190	258	03.03-11.03	■
PRIMERA III (P12) 01.02-				Saloon (Large family car-D Segment)			
1.8 LPG	Gasol./Gas (LPG)	FWD	1769	85	115	03.02-	■
X-TRAIL (T30) 01.01-12.13				SUV (Compact SUV-J Segment)			
2.0 (QR20DE)	Gasolina	FWD	1998	110	150	09.01-01.13	■
2.0 4x4 (QR20DE)	Gasolina	4WD	1998	110	150	09.01-01.13	■
2.0 4x4 (SR20VET)	Gasolina	4WD	1998	206	280	06.01-01.13	■
2.5 FWD	Gasolina	FWD	2488	131	178	06.01-12.07	■
2.5 4x4 (QR25DE)	Gasolina	4WD	2488	132	179	11.02-01.13	■
2.5 4x4 (QR25DE)	Gasolina	4WD	2488	134	182	09.01-02.07	■
2.2 dCi (YD22DDTI)	Diesel	FWD	2184	84	114	10.04-01.13	■
2.2 dCi (YD22ETI)	Diesel	FWD	2184	84	114	10.04-01.13	■
2.2 DCi FWD (YD22ETI)	Diesel	FWD	2184	84	114	06.01-09.04	■