

LISTA DE APLICACIONES - BUYERS GUIDE

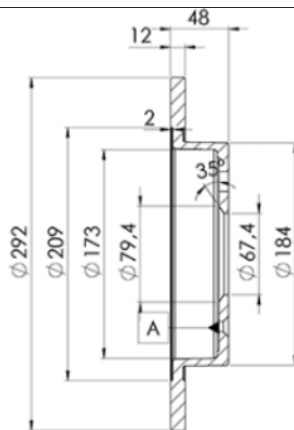
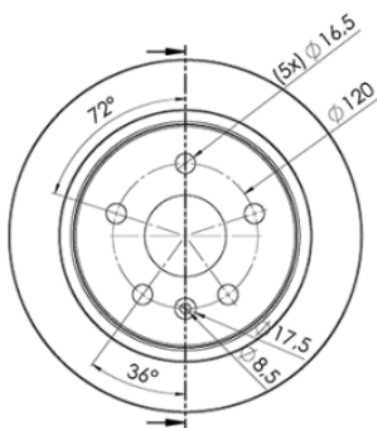
78BD4117-2



8 424073 145611

Weight: 11.360

O.E.M.	MAKE
13 501 198	SAAB
13 501 302	VAUXHALL
13 501 312	OPEL
13 502 198	VAUXHALL
1350 1313	CHEVROLET
5 69 025	OPEL
5 69 127	OPEL



78BD4117-2

E1 90R-02C0415/0092



Ø292x12x48

MAKE
BUICK
CHEVROLET
OPEL
SAAB
VAUXHALL



Trac.	CC	Kw	CV
-------	----	----	----



Front / Rear

BUICK

REGAL V (U.S.A.) 09.10-

Saloon (Large family car-D Segment)

2.0 (LHU)	Gasolina	FWD	1998	164	223	09.12-12.13	■
-----------	----------	-----	------	-----	-----	-------------	---

CHEVROLET

MALIBU VII 01.08-

Saloon (Executive car-E Segment)

2.0	Gasolina	FWD	1998	193	262	09.12-	■
-----	----------	-----	------	-----	-----	--------	---

MALIBU VIII (V300) 01.12-

Saloon (Executive car-E Segment)

2.4 (LE9(145CUL4))	Gasolina	FWD	2384	123	167	01.12-	■
2.0 D (LBS)	Diesel	FWD	1956	118	160	04.12-	■

OPEL

INSIGNIA A (G09) 07.08-

Hatchback (Executive car-E Segment)

1.4 (68) (A 14 NET)	Rim 17	Gasolina	FWD	1364	103	140	04.11-03.17	■
1.4 (68) (B 14 NET)	Rim 17	Gasolina	FWD	1364	103	140	04.11-03.17	■
1.6 (68) (A 16 XER)	Rim 17	Gasolina	FWD	1598	85	116	07.08-03.17	■
1.6 SIDI (68) (A 16 XHT)		Gasolina	FWD	1598	125	170	03.13-03.17	■
1.6 SIDI (68) (B 16 SHL)		Gasolina	FWD	1598	125	170	03.13-03.17	■
1.6 Turbo (68) (A 16 LET)	Rim 17	Gasolina	FWD	1598	132	180	07.08-03.17	■
1.8 (68) (A 18 XER)	Rim 17	Gasolina	FWD	1796	103	140	07.08-03.17	■
1.8 (68) (B 18 XER)	Rim 17	Gasolina	FWD	1796	103	140	07.08-03.17	■
2.0 Turbo (68) (A 20 NHT)	Rim 17	Gasolina	FWD	1998	162	220	07.08-03.17	■
2.0 Turbo 4x4 (68) (A 20 NHT)	Rim 17	Gasolina	4WD	1998	162	220	07.08-03.17	■
2.0 Turbo (68) (A 20 NHT)		Gasolina	FWD	1998	184	250	04.14-03.17	■
2.0 Turbo (68) (B 20 NHT)		Gasolina	FWD	1998	184	250	04.14-03.17	■

LISTA DE APLICACIONES - BUYERS GUIDE

2.0 Turbo 4x4 (68) (A 20 NFT)	Rim 17	Gasolina	4WD	1998	184	250	07.11-03.17	■
2.0 Turbo 4x4 (68) (A 20 NHT)	Rim 17	Gasolina	4WD	1998	184	250	07.11-03.17	■
2.0 Turbo 4x4 (68) (B 20 NHT)	Rim 17	Gasolina	4WD	1998	184	250	07.11-03.17	■
1.4 LPG (68) (A 14 NET)	Rim 17	Gasol./Gas (LPG)	FWD	1364	103	140	07.12-03.17	■
1.4 LPG (68) (B 14 NET)	Rim 17	Gasol./Gas (LPG)	FWD	1364	103	140	07.12-03.17	■
2.0 E85 Turbo (68) (A 20 NFT)	Rim 17	Gasol./Etanol	FWD	1998	162	220	10.10-03.17	■
2.0 CDTI (68) (A 20 DTC)	Rim 17	Diesel	FWD	1956	81	110	07.08-03.17	■
2.0 CDTI (68) (A 20 DTL)	Rim 17	Diesel	FWD	1956	81	110	07.08-03.17	■
2.0 CDTI (68) (A 20 DTE)		Diesel	FWD	1956	88	120	03.12-03.17	■
2.0 CDTI (68) (A 20 DT)	Rim 17	Diesel	FWD	1956	96	131	07.08-03.17	■
2.0 CDTI (68) (A 20 DTJ)	Rim 17	Diesel	FWD	1956	96	131	07.08-03.17	■
2.0 CDTI (68) (A 20 DTE)		Diesel	FWD	1956	103	140	06.13-03.17	■
2.0 CDTI (68) (A 20 DTH)	Rim 17	Diesel	FWD	1956	118	160	07.08-03.17	■
2.0 CDTI 4x4 (68) (A 20 DTH)	Rim 17	Diesel	4WD	1956	118	160	06.10-03.17	■
2.0 CDTI (68) (A 20 DTH)		Diesel	FWD	1956	120	163	07.13-03.17	■
2.0 CDTI 4x4 (68) (A 20 DTH)		Diesel	4WD	1956	120	163	07.13-03.17	■
2.0 Biturbo CDTI (68) (A 20 DTR)	Rim 17	Diesel	FWD	1956	140	190	07.08-12.11	■
2.0 Biturbo CDTI 4x4 (68) (A 20 DTR)	Rim 17	Diesel	4WD	1956	140	190	05.09-12.11	■
2.0 Biturbo CDTI (68) (A 20 DTR)	Rim 17	Diesel	FWD	1956	143	195	01.12-03.17	■
2.0 Biturbo CDTI 4x4 (68) (A 20 DTR)	Rim 17	Diesel	4WD	1956	143	195	01.12-03.17	■
INSIGNIA A (G09) 07.08-					Saloon (Executive car-E Segment)			
1.4 (69) (A 14 NET)	Rim 17	Gasolina	FWD	1364	103	140	04.11-03.17	■
1.4 (69) (B 14 NET)	Rim 17	Gasolina	FWD	1364	103	140	04.11-03.17	■
1.6 (69) (A 16 XER)	Rim 17	Gasolina	FWD	1598	85	116	07.08-03.17	■
1.6 SIDI (69) (A 16 XHT)		Gasolina	FWD	1598	125	170	03.13-03.17	■
1.6 SIDI (69) (B 16 SHL)		Gasolina	FWD	1598	125	170	03.13-03.17	■
1.6 Turbo (69) (A 16 LET)	Rim 17	Gasolina	FWD	1598	132	180	07.08-03.17	■
1.8 (69) (A 18 XER)	Rim 17	Gasolina	FWD	1796	103	140	07.08-03.17	■
1.8 (69) (B 18 XER)	Rim 17	Gasolina	FWD	1796	103	140	07.08-03.17	■
2.0 Turbo (69) (A 20 NHT)	Rim 17	Gasolina	FWD	1998	162	220	07.08-03.17	■
2.0 Turbo 4x4 (69) (A 20 NHT)	Rim 17	Gasolina	4WD	1998	162	220	07.08-03.17	■
2.0 Turbo (69) (A 20 NHT)		Gasolina	FWD	1998	184	250	04.14-03.17	■
2.0 Turbo (69) (B 20 NHT)		Gasolina	FWD	1998	184	250	04.14-03.17	■
2.0 Turbo 4x4 (69) (A 20 NFT)	Rim 17	Gasolina	4WD	1998	184	250	07.11-03.17	■
2.0 Turbo 4x4 (69) (A 20 NHT)	Rim 17	Gasolina	4WD	1998	184	250	07.11-03.17	■
2.0 Turbo 4x4 (69) (B 20 NHT)	Rim 17	Gasolina	4WD	1998	184	250	07.11-03.17	■
1.4 LPG (69) (A 14 NET)	Rim 17	Gasol./Gas (LPG)	FWD	1364	103	140	07.12-03.17	■
1.4 LPG (69) (B 14 NET)	Rim 17	Gasol./Gas (LPG)	FWD	1364	103	140	07.12-03.17	■
2.0 Turbo E85 (69) (A 20 NFT)	Rim 17	Gasol./Etanol	FWD	1998	162	220	07.08-03.17	■
2.0 CDTI (69) (A 20 DTC)	Rim 17	Diesel	FWD	1956	81	110	07.08-03.17	■
2.0 CDTI (69) (A 20 DTL)	Rim 17	Diesel	FWD	1956	81	110	07.08-03.17	■
2.0 CDTI (69) (A 20 DTE)		Diesel	FWD	1956	88	120	03.12-03.17	■
2.0 CDTI (69) (A 20 DT)	Rim 17	Diesel	FWD	1956	96	131	07.08-03.17	■
2.0 CDTI (69) (A 20 DTJ)	Rim 17	Diesel	FWD	1956	96	131	07.08-03.17	■
2.0 CDTI (69) (A 20 DTE)		Diesel	FWD	1956	103	140	06.13-03.17	■
2.0 CDTI (69) (A 20 DTH)	Rim 17	Diesel	FWD	1956	118	160	07.08-03.17	■
2.0 CDTI 4x4 (69) (A 20 DTH)	Rim 17	Diesel	4WD	1956	118	160	06.10-03.17	■
2.0 CDTI (69) (A 20 DTH)		Diesel	FWD	1956	120	163	07.13-03.17	■

LISTA DE APLICACIONES - BUYERS GUIDE

2.0 CDTI 4x4 (69) (A 20 DTH)		Diesel	4WD	1956	120	163	07.13-03.17	■
2.0 Biturbo CDTI (69) (A 20 DTR)	Rim 17	Diesel	FWD	1956	140	190	07.08-12.11	■
2.0 Biturbo CDTI 4x4 (69) (A 20 DTR)	Rim 17	Diesel	4WD	1956	140	190	07.08-12.11	■
2.0 Biturbo CDTI (69) (A 20 DTR)	Rim 17	Diesel	FWD	1956	143	195	01.12-03.17	■
2.0 Biturbo CDTI 4x4 (69) (A 20 DTR)	Rim 17	Diesel	4WD	1956	143	195	01.12-03.17	■
INSIGNIA A Sports Tourer (G09) 07.08-					Estate (Executive car-E Segment)			
1.4 (35) (A 14 NET)	Rim 17	Gasolina	FWD	1364	103	140	04.11-03.17	■
1.4 (35) (B 14 NET)	Rim 17	Gasolina	FWD	1364	103	140	04.11-03.17	■
1.6 (35) (A 16 XER)	Rim 17	Gasolina	FWD	1598	85	116	07.08-06.12	■
1.6 SIDI (35) (A 16 XHT)		Gasolina	FWD	1598	125	170	06.13-03.17	■
1.6 SIDI (35) (B 16 SHL)		Gasolina	FWD	1598	125	170	06.13-03.17	■
1.6 Turbo (35) (A 16 LET)	Rim 17	Gasolina	FWD	1598	132	180	01.09-06.13	■
1.8 (35) (A 18 XER)	Rim 17	Gasolina	FWD	1796	103	140	07.08-03.17	■
1.8 (35) (B 18 XER)	Rim 17	Gasolina	FWD	1796	103	140	07.08-03.17	■
2.0 Turbo (35) (A 20 NFT)	Rim 17	Gasolina	FWD	1998	162	220	07.08-06.13	■
2.0 Turbo (35) (A 20 NHT)	Rim 17	Gasolina	FWD	1998	162	220	07.08-06.13	■
2.0 Turbo 4x4 (35) (A 20 NHT)	Rim 17	Gasolina	4WD	1998	162	220	07.08-06.11	■
2.0 Turbo (35) (A 20 NHT)		Gasolina	FWD	1998	184	250	04.14-03.17	■
2.0 Turbo (35) (B 20 NHT)		Gasolina	FWD	1998	184	250	04.14-03.17	■
2.0 Turbo 4x4 (35) (A 20 NFT)	Rim 17	Gasolina	4WD	1998	184	250	09.11-03.17	■
2.0 Turbo 4x4 (35) (A 20 NHT)	Rim 17	Gasolina	4WD	1998	184	250	09.11-03.17	■
2.0 Turbo 4x4 (35) (B 20 NHT)	Rim 17	Gasolina	4WD	1998	184	250	09.11-03.17	■
1.4 LPG (35) (A 14 NET)	Rim 17	Gasol./Gas (LPG)	FWD	1364	103	140	09.12-03.17	■
1.4 LPG (35) (B 14 NET)	Rim 17	Gasol./Gas (LPG)	FWD	1364	103	140	09.12-03.17	■
2.0 E85 Turbo (35) (A 20 NFT)	Rim 17	Gasol./Etanol	FWD	1998	162	220	09.10-11.11	■
2.0 CDTI (35) (A 20 DTC)	Rim 17	Diesel	FWD	1956	81	110	07.08-06.13	■
2.0 CDTI (35) (A 20 DTL)	Rim 17	Diesel	FWD	1956	81	110	07.08-06.13	■
2.0 CDTI (35) (A 20 DTE)		Diesel	FWD	1956	88	120	03.12-06.15	■
2.0 CDTI (35) (A 20 DT)	Rim 17	Diesel	FWD	1956	96	131	07.08-06.15	■
2.0 CDTI (35) (A 20 DTJ)	Rim 17	Diesel	FWD	1956	96	131	07.08-06.15	■
2.0 CDTI (35) (A 20 DTE)		Diesel	FWD	1956	103	140	07.13-06.15	■
2.0 CDTI (35) (A 20 DTH)	Rim 17	Diesel	FWD	1956	118	160	07.08-06.15	■
2.0 CDTI 4x4 (35) (A 20 DTH)	Rim 17	Diesel	4WD	1956	118	160	06.10-06.15	■
2.0 CDTI (35) (A 20 DTH)		Diesel	FWD	1956	120	163	07.13-06.15	■
2.0 CDTI 4x4 (35) (A 20 DTH)		Diesel	4WD	1956	120	163	07.13-06.15	■
2.0 Biturbo CDTI (35) (A 20 DTR)	Rim 17	Diesel	FWD	1956	140	190	07.08-03.17	■
2.0 Biturbo CDTI 4x4 (35) (A 20 DTR)	Rim 17	Diesel	4WD	1956	140	190	07.08-03.17	■
2.0 Biturbo CDTI (35) (A 20 DTR)	Rim 17	Diesel	FWD	1956	143	195	01.12-06.15	■
2.0 Biturbo CDTI 4x4 (35) (A 20 DTR)	Rim 17	Diesel	4WD	1956	143	195	01.12-06.15	■
SAAB								
9-5 II (YS3G) 01.10-01.12					Saloon (Executive car-E Segment)			
1.6 Turbo (A 16 LET)	Rim 17	Gasolina	FWD	1598	132	180	05.10-01.12	■
2.0 Turbo (A 20 NHT)	Rim 17	Gasolina	FWD	1998	162	220	05.10-01.12	■
2.0 Turbo XWD (A 20 NHT)	Rim 17	Gasolina	4WD	1998	162	220	05.10-01.12	■
2.8 Turbo V6 XWD (A 28 NER)	Rim 17	Gasolina	4WD	2792	221	301	05.10-01.12	■
2.0 t Biopower (A 20 NFT)	Rim 17	Gasol./Etanol	FWD	1998	162	220	05.10-01.12	■
2.0 t BioPower XWD (A 20 NHT)	Rim 17	Gasol./Etanol	4WD	1998	162	220	05.10-01.12	■
2.0 TiD (A 20 DTH)	Rim 17	Diesel	FWD	1956	118	160	05.10-01.12	■

LISTA DE APLICACIONES - BUYERS GUIDE

2.0 TtID (A 20 DTR)	Rim 17	Diesel	FWD	1956	140	190	05.10-01.12	■
2.0 TtID XWD (A 20 DTR)	Rim 17	Diesel	4WD	1956	140	190	05.10-01.12	■
VAUXHALL								
INSIGNIA Mk I (A) (G09) 07.08-05.17					Hatchback (Executive car-E Segment)			
1.4 (68) (A 14 NET)	Rim 17	Gasolina	FWD	1364	103	140	04.11-05.17	■
1.4 (68) (B 14 NET)	Rim 17	Gasolina	FWD	1364	103	140	04.11-05.17	■
1.6	Rim 17	Gasolina	FWD	1598	85	116	07.08-05.17	■
1.6 Turbo (68) (A 16 LET)	Rim 17	Gasolina	FWD	1598	132	180	01.09-05.17	■
1.8 (68) (A 18 XER)	Rim 17	Gasolina	FWD	1796	103	140	07.08-05.17	■
1.8 (68) (B 18 XER)	Rim 17	Gasolina	FWD	1796	103	140	07.08-05.17	■
2.0 Turbo (68) (A 20 NFT)	Rim 17	Gasolina	FWD	1998	162	220	07.08-05.17	■
2.0 Turbo (68) (A 20 NHT)	Rim 17	Gasolina	FWD	1998	162	220	07.08-05.17	■
2.0 Turbo 4x4 (68) (A 20 NHT)	Rim 17	Gasolina	4WD	1998	162	220	07.08-05.17	■
2.0 Turbo 4x4 (68)	Rim 17	Gasolina	4WD	1998	184	250	09.11-05.17	■
1.4 LPG (68) (A 14 NET)	Rim 17	Gasol./G as (LPG)	FWD	1364	103	140	07.12-05.17	■
2.0 CDTI (68) (A 20 DTC)	Rim 17	Diesel	FWD	1956	81	110	07.08-05.17	■
2.0 CDTI (68) (A 20 DTL)	Rim 17	Diesel	FWD	1956	81	110	07.08-05.17	■
2.0 CDTI (68) (A 20 DT)	Rim 17	Diesel	FWD	1956	96	130	07.08-12.14	■
2.0 CDTI (68) (A 20 DTJ)	Rim 17	Diesel	FWD	1956	96	130	07.08-12.14	■
2.0 CDTI (68) (A 20 DTH)	Rim 17	Diesel	FWD	1956	118	160	07.08-05.17	■
2.0 CDTI 4x4 (68) (A 20 DTH)	Rim 17	Diesel	4WD	1956	118	160	07.08-05.17	■
2.0 CDTI (68) (A 20 DTR)	Rim 17	Diesel	FWD	1956	140	190	10.08-05.17	■
2.0 CDTI 4x4 (68) (A 20 DTR)	Rim 17	Diesel	4WD	1956	140	190	05.09-05.17	■
2.0 Biturbo CDTI (68) (A 20 DTR)	Rim 17	Diesel	FWD	1956	143	195	03.12-05.17	■
2.0 Biturbo CDTI 4x4 (68) (A 20 DTR)	Rim 17	Diesel	4WD	1956	143	195	03.12-05.17	■
INSIGNIA Mk I (A) (G09) 07.08-05.17					Saloon (Executive car-E Segment)			
1.4 (69) (A 14 NET)	Rim 17	Gasolina	FWD	1364	103	140	04.11-05.17	■
1.6	Rim 17	Gasolina	FWD	1598	85	116	07.08-05.17	■
1.6 SIDI		Gasolina	FWD	1598	125	170	03.13-05.17	■
1.6 Turbo (69) (A 16 LET)	Rim 17	Gasolina	FWD	1598	132	180	01.09-05.17	■
1.8 (69) (A 18 XER)	Rim 17	Gasolina	FWD	1796	103	140	07.08-05.17	■
2.0 Turbo (69) (A 20 NFT)	Rim 17	Gasolina	FWD	1998	162	220	07.08-05.17	■
2.0 Turbo (69) (A 20 NHT)	Rim 17	Gasolina	FWD	1998	162	220	07.08-05.17	■
2.0 Turbo 4x4 (69) (A 20 NHT)	Rim 17	Gasolina	4WD	1998	162	220	07.08-05.17	■
2.0 Turbo 4x4 (69) (A 20 NHT)	Rim 17	Gasolina	4WD	1998	184	250	09.11-05.17	■
2.0 Turbo 4x4 (69) (B 20 NHT)	Rim 17	Gasolina	4WD	1998	184	250	09.11-05.17	■
1.4 LPG (69) (A 14 NET)	Rim 17	Gasol./G as (LPG)	FWD	1364	103	140	07.12-05.17	■
2.0 CDTI (69)	Rim 17	Diesel	FWD	1956	81	110	07.08-05.17	■
2.0 CDTI (69) (A 20 DT)	Rim 17	Diesel	FWD	1956	96	130	07.08-12.14	■
2.0 CDTI (69) (A 20 DTJ)	Rim 17	Diesel	FWD	1956	96	130	07.08-12.14	■
2.0 CDTI (69) (A 20 DTH)	Rim 17	Diesel	FWD	1956	118	160	07.08-05.17	■
2.0 CDTI 4x4 (69) (A 20 DTH)	Rim 17	Diesel	4WD	1956	118	160	07.08-05.17	■
2.0 CDTI (69) (A 20 DTR)	Rim 17	Diesel	FWD	1956	140	190	11.08-05.17	■
2.0 CDTI 4x4 (69) (A 20 DTR)	Rim 17	Diesel	4WD	1956	140	190	05.09-05.17	■
2.0 Biturbo CDTI (69) (A 20 DTR)	Rim 17	Diesel	FWD	1956	143	195	03.12-05.17	■
2.0 Biturbo CDTI 4x4 (69) (A 20 DTR)	Rim 17	Diesel	4WD	1956	143	195	03.12-05.17	■
INSIGNIA Mk I (A) Sports Tourer (G09) 07.08-05.17					Estate (Executive car-E Segment)			
1.4 (35) (A 14 NET)	Rim 17	Gasolina	FWD	1364	103	140	04.11-05.17	■
1.4 (35) (B 14 NET)	Rim 17	Gasolina	FWD	1364	103	140	04.11-05.17	■

LISTA DE APLICACIONES - BUYERS GUIDE

1.6	Rim 17	Gasolina	FWD	1598	85	116	07.08-05.17
1.6 Turbo (35) (A 16 LET)	Rim 17	Gasolina	FWD	1598	132	180	01.09-05.17
1.8 (35) (A 18 XER)	Rim 17	Gasolina	FWD	1796	103	140	07.08-05.17
2.0 Turbo (35) (A 20 NFT)	Rim 17	Gasolina	FWD	1998	162	220	07.08-05.17
2.0 Turbo (35) (A 20 NHT)	Rim 17	Gasolina	FWD	1998	162	220	07.08-05.17
2.0 Turbo 4x4 (35) (A 20 NHT)	Rim 17	Gasolina	4WD	1998	162	220	07.08-05.17
2.0 Turbo 4x4 (35)	Rim 17	Gasolina	4WD	1998	184	250	09.11-05.17
1.4 LPG (35) (A 14 NET)	Rim 17	Gasol./Gas (LPG)	FWD	1364	103	140	07.12-05.17
2.0 CDTI (35) (A 20 DTC)	Rim 17	Diesel	FWD	1956	81	110	07.08-05.17
2.0 CDTI (35) (A 20 DT)	Rim 17	Diesel	FWD	1956	96	130	07.08-12.14
2.0 CDTI (35) (A 20 DTJ)	Rim 17	Diesel	FWD	1956	96	130	07.08-12.14
2.0 CDTI (35) (A 20 DTH)	Rim 17	Diesel	FWD	1956	118	160	07.08-05.17
2.0 CDTI 4x4 (35) (A 20 DTH)	Rim 17	Diesel	4WD	1956	118	160	07.08-05.17
2.0 CDTI (35) (A 20 DTR)	Rim 17	Diesel	FWD	1956	140	190	11.08-05.17
2.0 CDTI 4x4 (35) (A 20 DTR)	Rim 17	Diesel	4WD	1956	140	190	05.09-05.17
2.0 Biturbo CDTI (35) (A 20 DTR)	Rim 17	Diesel	FWD	1956	143	195	03.12-05.17
2.0 Biturbo CDTI 4x4 (35) (A 20 DTR)	Rim 17	Diesel	4WD	1956	143	195	03.12-05.17

