

LISTA DE APLICACIONES - BUYERS GUIDE

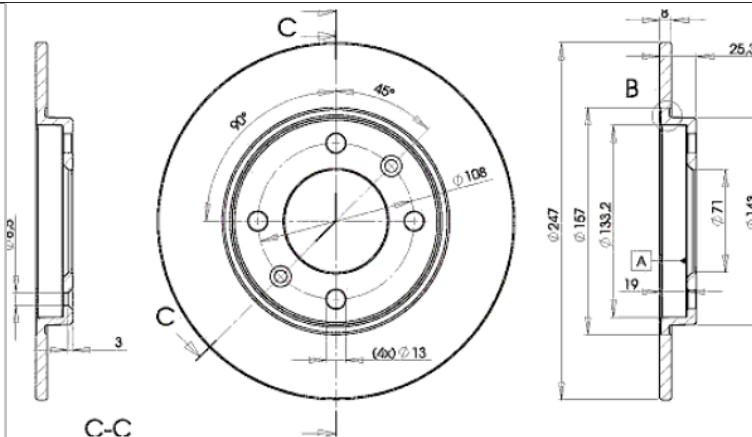
78BD4247-2



8 424073 145758

Weight: 5.408

O.E.M.	MAKE
1691.15	CITROËN
4246.G3	PEUGEOT
4246.G6	PEUGEOT
95 661 749	CITROËN
96 012 770	CITROËN



78BD4247-2

E1 90R-02C0415/0048



Ø247x8x25.3

MAKE
CITROËN
PEUGEOT



Trac.	CC	Kw	CV
-------	----	----	----



Front / Rear

CITROËN

SAXO / CHANSON (S0, S1) 02.96-04.04

				Hatchback (Supermini car-B Segment)				
1.6 VTL, VTR (NFZ (TU5JP))	Gasolina	FWD	1587	65	88	05.96-06.03		■
1.6 (NFZ (TU5JP))	Gasolina	FWD	1587	66	90	02.96-06.03		■
1.6 VTS (NFT (TU5JP))	Gasolina	FWD	1587	72	98	09.00-09.03		■
1.6 (NFT (TU5JP))	Gasolina	FWD	1587	74	101	02.01-04.04		■
1.6 VTR	Gasolina	FWD	1587	80	109	05.96-07.99		■
1.6 VTS (NFX (TU5JP4))	Gasolina	FWD	1587	87	118	06.96-09.03		■
1.6 (NFX (TU5JP4))	Gasolina	FWD	1587	88	120	02.96-04.04		■
1.1 BiFuel (HDZ (TU1M))	Gasol./Gas (LPG)	FWD	1124	44	60	07.00-06.03		■

XSARA (N0) 01.98-04.05

				Coupe (Compact car-C Segment)				
1.6 16V (NFU (TU5JP4))	Gasolina	FWD	1587	80	109	09.00-03.05		■
1.8 i (LFZ (XU7JP))	Gasolina	FWD	1761	74	101	02.98-09.00		■
1.8 i 16V (LFY (XU7JP4))	Gasolina	FWD	1761	81	110	02.98-09.00		■
2.0 16V (RFN (EW10J4))	Gasolina	FWD	1997	100	136	09.00-03.05		■
2.0	Gasolina	FWD	1998	97	132	08.98-08.00		■
2.0 i 16V (RFS (XU10J4RS))	Gasolina	FWD	1998	120	163	02.98-03.05		■
1.8 LPG (LFY (XU7JP4))	Gasol./Gas (LPG)	FWD	1761	82	112	01.98-08.00		■
2.0 HDI 90 (RHY (DW10TD))	Diesel	FWD	1997	66	90	02.99-03.05		■
2.0 HDI 109 (RHZ (DW10ATED))	Diesel	FWD	1997	80	109	05.01-03.05		■

XSARA 05.98-08.05

				Estate Van (Compact car-C Segment)				
1.4 (KFX (TU3JP))	Gasolina	FWD	1360	55	75	09.00-03.05		■
1.8 D (A9A (XUD7))	Diesel	FWD	1769	43	58	05.98-05.99		■

LISTA DE APLICACIONES - BUYERS GUIDE

2.0 HDi (RHY (DW10TD))		Diesel	FWD	1997	66	90	09.00-03.05	■
XSARA (N2) 10.97-03.10					Estate (Compact car-C Segment)			
1.6 16V (NFU (TU5JP4))		Gasolina	FWD	1587	80	109	09.00-08.05	■
1.8 i 16V (LFY (XU7JP4))		Gasolina	FWD	1761	81	110	10.97-09.00	■
2.0 16V (RFN (EW10J4))		Gasolina	FWD	1997	100	136	09.00-08.05	■
2.0 16V (RFV (XU10J4R))		Gasolina	FWD	1998	97	132	07.98-09.00	■
1.8 LPG (LFY (XU7JP4))		Gasol./Gas (LPG)	FWD	1761	81	110	05.98-08.00	■
2.0 HDi 90 (RHY (DW10TD))		Diesel	FWD	1997	66	90	02.99-08.05	■
2.0 HDi 109 (RHZ (DW10ATED))		Diesel	FWD	1997	80	109	05.01-08.05	■
XSARA (N3_) 05.98-03.05					Hatchback Van (Compact car-C Segment)			
2.0 HDi (RHY (DW10TD))		Diesel	FWD	1997	66	90	09.00-03.05	■
XSARA (N1) 04.97-12.05					Hatchback (Compact car-C Segment)			
1.8 VTS (6FZ (EW7J4))		Gasolina	FWD	1749	85	116	08.98-10.04	■
1.8 i 16V (LFY (XU7JP4))		Gasolina	FWD	1761	81	110	04.97-09.00	■
2.0 16V (RFN (EW10J4))		Gasolina	FWD	1997	100	136	09.00-03.05	■
2.0 16V (RFV (XU10J4R))		Gasolina	FWD	1998	97	132	07.98-09.00	■
2.0 16V		Gasolina	FWD	1998	120	163	04.97-09.00	■
1.8 Bifuel (LFY (XU7JP4))		Gasol./Gas (LPG)	FWD	1761	82	111	07.97-08.00	■
2.0 HDi 90 (RHY (DW10TD))		Diesel	FWD	1997	66	90	02.99-03.05	■
2.0 HDi 109 (RHZ (DW10ATED))		Diesel	FWD	1997	80	109	05.01-03.05	■
ZX (N2) 10.93-07.99					Estate (Compact car-C Segment)			
1.8 i (LFZ (XU7JP))	07/94-	Gasolina	FWD	1761	74	101	10.93-10.97	■
1.8 i 16V (LFY (XU7JP4))		Gasolina	FWD	1761	81	110	01.96-02.98	■
1.9 TD (DHY (XUD9TE/Y))	07/94-	Diesel	FWD	1905	66	90	10.93-10.97	■
ZX (N2) 03.91-07.99					Hatchback (Compact car-C Segment)			
1.6 i (BDY (XU5M))	vehicles with ABS	Gasolina	FWD	1580	65	88	03.91-06.97	■
1.6 i (BFZ (XU5JP))	vehicles with ABS	Gasolina	FWD	1580	65	88	03.91-06.97	■
1.6 (BDY (XU5M))	vehicles with ABS	Gasolina	FWD	1580	66	90	07.94-10.97	■
1.6 (BFZ (XU5JP))	vehicles with ABS	Gasolina	FWD	1580	66	90	07.94-10.97	■
1.8 i (LFZ (XU7JP))		Gasolina	FWD	1761	74	101	07.92-06.97	■
1.8 (LFZ (XU7JP))		Gasolina	FWD	1761	76	103	03.91-10.97	■
1.8 (LFY (XU7JP4))		Gasolina	FWD	1761	82	111	04.96-10.97	■
1.9 i (DKZ (XU9JA))		Gasolina	FWD	1905	88	120	03.91-06.97	■
1.9 (D6E (XU9JA))		Gasolina	FWD	1905	93	126	03.91-06.97	■
1.9 (D6E (XU9JA))		Gasolina	FWD	1905	96	131	03.91-09.93	■
2.0 i 16V (RFT (XU10J4/Z))	09/96-	Gasolina	FWD	1998	110	150	06.94-06.97	■
2.0 i 16V (RFT (XU10J4/Z))		Gasolina	FWD	1998	114	155	07.92-10.97	■
2.0 i 16V (RFY (XU10J4/Z))		Gasolina	FWD	1998	114	155	07.92-10.97	■
2.0 i 16V (RFS (XU10J4RS))	09/96-	Gasolina	FWD	1998	120	163	05.96-06.97	■
2.0 (RFS (XU10J4RS))		Gasolina	FWD	1998	122	166	09.96-10.97	■
1.9 DT (DHY (XUD9TE/Y))		Diesel	FWD	1905	65	88	07.94-10.97	■
PEUGEOT								
106 II (1A_, 1C_) 04.96-05.05					Hatchback (Supermini car-B Segment)			
1.6 i (NFZ (TU5JP))		Gasolina	FWD	1587	65	89	05.96-10.99	■
1.6 i (NFW (TU5J2))		Gasolina	FWD	1587	74	101	05.96-01.01	■
1.6 i (NFY (TU5J2))		Gasolina	FWD	1587	74	101	05.96-01.01	■
1.6 S16 (NFX (TU5J4))		Gasolina	FWD	1587	87	118	05.96-07.04	■

LISTA DE APLICACIONES - BUYERS GUIDE

1.6 S16 (NFX (TU5J4))		Gasolina	FWD	1587	88	120	04.98-09.01	■
206 (2D) 09.00-					Convertible (Supermini car-B Segment)			
1.6 16V (2DNFUF, 2DNFUR) (NFU (TU5JP4))		Gasolina	FWD	1587	80	109	09.00-12.07	■
1.6 (NFU (TU5JP4))		Gasolina	FWD	1587	81	110	09.01-12.08	■
2.0 S16 (RFN (EW10J4))		Gasolina	FWD	1997	100	136	09.00-12.07	■
1.6 HDi 110 (9HZ (DV6TED4))		Diesel	FWD	1560	80	109	04.05-02.07	■
206 (2A/C) 08.98-					Hatchback (Supermini car-B Segment)			
1.4 16V (KFU (ET3J4))	vehicles with ABS	Gasolina	FWD	1360	65	88	10.03-02.08	■
1.6 16V (NFU (TU5JP4))		Gasolina	FWD	1587	79	107	06.01-04.09	■
1.6 16V (NFU (TU5JP4))		Gasolina	FWD	1587	80	109	07.00-04.09	■
1.6 (NFU (TU5JP4))		Gasolina	FWD	1587	81	110	05.05-07.08	■
2.0 S16 (RFR (EW10J4))		Gasolina	FWD	1997	99	135	04.99-10.00	■
2.0 S16 (RFN (EW10J4))		Gasolina	FWD	1997	100	136	06.99-12.07	■
2.0 RC (RFK (EW10J4S))		Gasolina	FWD	1997	130	177	07.03-12.07	■
1.6 BiFuel (NFU (TU5JP4))		Gasol./Gas (LPG)	FWD	1587	80	109	07.00-04.09	■
1.6 HDi 110 (9HY (DV6TED4))		Diesel	FWD	1560	80	109	05.04-02.07	■
1.6 HDi 110 (9HZ (DV6TED4))		Diesel	FWD	1560	80	109	05.04-02.07	■
206 03.07-					Saloon (Supermini car-B Segment)			
1.6 16V (NFU (TU5JP4))		Gasolina	FWD	1587	80	109	03.07-	■
206 SW (2E/K) 07.02-					Estate (Supermini car-B Segment)			
1.6 16V (NFU (TU5JP4))		Gasolina	FWD	1587	80	109	07.02-	■
1.6 (NFU (TU5JP4))		Gasolina	FWD	1587	81	110	05.05-07.08	■
2.0 16V (RFN (EW10J4))		Gasolina	FWD	1997	100	136	07.02-02.07	■
1.6 LPG (NFU (TU5JP4))		Gasol./Gas (LPG)	FWD	1587	80	109	07.02-02.07	■
1.6 Flex		Gasol./Ethanol	FWD	1587	81	110	05.05-07.08	■
1.6 Flex		Gasol./Ethanol	FWD	1587	83	113	05.05-07.08	■
1.6 HDi 110 (9HZ (DV6TED4))		Diesel	FWD	1560	80	109	05.04-	■
2.0 HDi (RHY (DW10TD))		Diesel	FWD	1997	66	90	07.02-02.07	■
306 (7D, N3, N5) 01.94-04.02					Convertible (Compact car-C Segment)			
1.8 16V (LFY (XU7JP4))		Gasolina	FWD	1761	81	110	05.97-04.02	■
2.0 (RFX (XU10J2))	-04/97	Gasolina	FWD	1998	89	121	03.94-04.02	■
2.0 (RFX (XU10J2))		Gasolina	FWD	1998	90	123	02.95-11.97	■
2.0 (RFX (XU10J2))		Gasolina	FWD	1998	92	125	01.94-06.97	■
2.0 16V (RFV (XU10J4R))		Gasolina	FWD	1998	97	132	03.97-04.02	■
2.0 16V (RFV (XU10J4R))		Gasolina	FWD	1998	99	135	03.97-04.02	■
306 (N_, 7_) 07.93-08.02					Estate Van (Compact car-C Segment)			
2.0 HDi (RHY (DW10TD))		Diesel	FWD	1997	66	90	08.98-06.00	■
306 (7E, N3, N5) 06.94-12.02					Estate (Compact car-C Segment)			
1.8 16V (LFY (XU7JP4))		Gasolina	FWD	1761	81	110	03.97-04.02	■
1.8 16V (LFY (XU7JP4))		Gasolina	FWD	1761	82	112	03.97-07.01	■
2.0 (RFV (XU10J4R))		Gasolina	FWD	1998	97	132	03.97-04.02	■
2.0 16V		Gasolina	FWD	1998	99	135	03.97-04.02	■
1.9 TD (DJY (XUD9A))		Diesel	FWD	1905	52	71	07.95-08.00	■
2.0 HDi 90 (RHY (DW10TD))		Diesel	FWD	1997	66	90	06.99-04.02	■
306 (7A, 7C, N3, N5) 01.93-10.03					Hatchback (Compact car-C Segment)			
1.8 16V (LFY (XU7JP4))		Gasolina	FWD	1761	81	110	03.97-05.01	■

LISTA DE APLICACIONES - BUYERS GUIDE

1.8 16V (LFY (XU7JP4))		Gasolina	FWD	1761	82	112	03.97-10.03	■
1.8 16V		Gasolina	FWD	1761	86	117	10.99-10.03	■
2.0 XSi (RFX (XU10J2))		Gasolina	FWD	1998	89	121	05.93-05.01	■
2.0 16V (RFV (XU10J4R))		Gasolina	FWD	1998	97	132	03.97-05.01	■
2.0 16V (RFV (XU10J4R))		Gasolina	FWD	1998	99	135	03.97-06.00	■
2.0 S16 (RFT (XU10J4))	-04/97	Gasolina	FWD	1998	110	150	06.94-05.01	■
2.0 S16 (RFY (XU10J4Z))	-04/97	Gasolina	FWD	1998	110	150	06.94-05.01	■
2.0 S16 (RFY (XU10J4Z))		Gasolina	FWD	1998	112	152	05.93-05.01	■
2.0 S16 (RFS (XU10J4RS))		Gasolina	FWD	1998	120	163	06.96-05.01	■
2.0		Gasolina	FWD	1998	123	167	01.98-05.00	■
1.9 D (WJZ (DW8))		Diesel	FWD	1868	52	71	01.99-08.03	■
1.9 TD (DJY (XUD9A))		Diesel	FWD	1905	52	71	07.95-08.00	■
2.0 HDI 90 (RHY (DW10TD))		Diesel	FWD	1997	66	90	06.99-12.02	■
306 (7B, N3, N5) 04.93-10.03							Saloon (Compact car-C Segment)	
1.8 16V (LFY (XU7JP4))		Gasolina	FWD	1761	81	110	03.97-05.01	■
1.8 16V (LFY (XU7JP4))		Gasolina	FWD	1761	82	112	03.97-07.01	■
2.0 ST (RFX (XU10J2))		Gasolina	FWD	1998	89	121	07.94-05.01	■
2.0 (RFX (XU10J2))		Gasolina	FWD	1998	92	125	11.95-06.97	■
2.0 (RFV (XU10J4R))		Gasolina	FWD	1998	97	132	03.97-05.01	■
2.0		Gasolina	FWD	1998	99	135	05.97-06.00	■
2.0 S16 (RFT (XU10J4))	-04/97	Gasolina	FWD	1998	110	150	06.94-05.01	■
2.0 S16 (RFY (XU10J4Z))		Gasolina	FWD	1998	112	152	06.94-05.01	■
2.0 HDI 90 (RHY (DW10TD))		Diesel	FWD	1997	66	90	06.99-12.01	■