

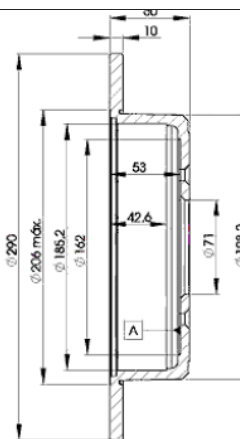
# LISTA DE APLICACIONES - BUYERS GUIDE

## 78BD4250-2



Weight: 10.652

O.E.M.	MAKE
4246.L7	PEUGEOT
4246.T6	PEUGEOT
4246.T7	PEUGEOT



## 78BD4250-2

E1 90R-02C0453/0106



Ø290x10x60

MAKE  
PEUGEOT



Trac.	CC	Kw	CV	
				Front / Rear

### PEUGEOT

#### 406 (8C) 03.97-02.05

#### Coupe (Large family car-D Segment)

1.8		Gasolina	FWD	1761	82	112	10.97-03.99	■
2.0 16V (RFR (EW10J4))		Gasolina	FWD	1997	99	135	01.99-10.00	■
2.0 16V (RFN (EW10J4))		Gasolina	FWD	1997	100	136	10.00-12.04	■
2.0 16V (RFV (XU10J4R))		Gasolina	FWD	1997	100	136	10.00-12.04	■
2.0 16V (RFV (XU10J4R))	-03/99	Gasolina	FWD	1998	97	132	03.97-12.04	■
2.0 16V (RFV (XU10J4R))		Gasolina	FWD	1998	99	135	04.99-09.04	■
2.2 (3FZ (EW12J4))		Gasolina	FWD	2230	116	158	03.02-12.04	■
3.0 V6 24V (XFZ (ES9J4))		Gasolina	FWD	2946	140	190	03.97-12.04	■
3.0 24V (XFZ (ES9J4))		Gasolina	FWD	2946	143	194	05.97-06.99	■
3.0 V6 (XFX (ES9J4S))		Gasolina	FWD	2946	152	207	03.00-12.04	■
3.0 V6		Gasolina	FWD	2946	154	210	03.99-06.01	■
2.2 HDi (4HX (DW12TED4))		Diesel	FWD	2179	98	133	03.00-12.04	■

#### 406 (8E/F) 10.96-10.04

#### Estate (Large family car-D Segment)

1.8 16V (6FZ (EW7J4))		Gasolina	FWD	1749	85	116	10.00-10.04	■
1.8 (LFX (XU7JB))		Gasolina	FWD	1761	66	90	05.97-10.04	■
1.8 (L6A (XU7JP))		Gasolina	FWD	1761	74	101	10.96-03.99	■
1.8 (LFZ (XU7JP))		Gasolina	FWD	1761	74	101	10.96-03.99	■
1.8 16V (LFY (XU7JP4))		Gasolina	FWD	1761	81	110	10.96-10.00	■
2.0 16V (RFR (EW10J4))		Gasolina	FWD	1997	99	135	01.99-10.00	■
2.0 16V (RFN (EW10J4))	-05/04	Gasolina	FWD	1997	100	136	10.00-10.04	■
2.0 16V HPI (RLZ (EW10D))	-05/04	Gasolina	FWD	1997	103	140	05.01-10.04	■
2.0 16V (RFV (XU10J4R))	-03/99	Gasolina	FWD	1998	97	132	10.96-10.04	■
2.0 (RGY (XU10J2TE))		Gasolina	FWD	1998	104	141	11.96-03.99	■

# LISTA DE APLICACIONES - BUYERS GUIDE

2.0 Turbo (RGX (XU10J2TE))		Gasolina	FWD	1998	108	147	10.96-10.04	■
2.2 (3FZ (EW12J4))		Gasolina	FWD	2230	116	158	07.00-10.04	■
3.0 24V (XFZ (ES9J4))		Gasolina	FWD	2946	140	190	10.96-10.04	■
3.0 V6 (XFX (ES9J4S))		Gasolina	FWD	2946	152	207	03.00-10.04	■
1.8 Bifuel (6FZ (EW7J4))		Gasol./Gas (LPG)	FWD	1749	85	116	10.00-02.04	■
2.0 HDI 90 (RHY (DW10TD))		Diesel	FWD	1997	66	90	02.99-10.04	■
2.0 HDI 110 (RHS (DW10ATED))		Diesel	FWD	1997	79	107	08.01-10.04	■
2.0 HDI 110 (RHZ (DW10ATED))		Diesel	FWD	1997	79	107	08.01-10.04	■
2.0 HDI 110 (RHZ (DW10ATED))		Diesel	FWD	1997	80	109	02.99-04.04	■
2.1 TD 12V (P8C (XUD11BTE))		Diesel	FWD	2088	80	109	10.96-10.04	■
2.2 HDi (4HX (DW12TED4))		Diesel	FWD	2179	98	133	03.00-10.04	■
<b>406 (8B) 08.95-01.05</b>					<b>Saloon (Large family car-D Segment)</b>			
1.6 (BFZ (XU5JP))	04/96-, vehicles with ABS	Gasolina	FWD	1580	65	88	11.95-05.04	■
1.8 16V (6FZ (EW7J4))	vehicles with ABS	Gasolina	FWD	1749	85	116	10.00-05.04	■
1.8 (LFX (XU7JB))	vehicles with ABS	Gasolina	FWD	1761	66	90	05.97-05.04	■
1.8 16V (LFY (XU7JP4))	vehicles with ABS	Gasolina	FWD	1761	81	110	11.95-10.00	■
2.0 16V (RFR (EW10J4))		Gasolina	FWD	1997	99	135	01.99-08.00	■
2.0 16V (RFN (EW10J4))		Gasolina	FWD	1997	100	136	08.00-06.04	■
2.0 16V HPi (RLZ (EW10D))		Gasolina	FWD	1997	103	140	05.01-05.04	■
2.0 16V (RFV (XU10J4R))		Gasolina	FWD	1998	97	132	11.95-05.04	■
2.0 (RGY (XU10J2TE))		Gasolina	FWD	1998	104	141	11.96-03.99	■
2.0 Turbo (RGX (XU10J2TE))		Gasolina	FWD	1998	108	147	04.96-05.04	■
2.2 (3FZ (EW12J4))		Gasolina	FWD	2230	116	158	07.00-05.04	■
3.0 24V (XFZ (ES9J4))		Gasolina	FWD	2946	140	190	10.96-05.04	■
3.0 24V (XFZ (ES9J4))		Gasolina	FWD	2946	143	194	01.98-06.99	■
3.0 V6 (XFX (ES9J4S))		Gasolina	FWD	2946	152	207	03.00-05.04	■
1.8 Bifuel (6FZ (EW7J4))		Gasol./Gas (LPG)	FWD	1749	85	116	09.00-05.04	■
1.8 Bifuel (LFY (XU7JP4))		Gasol./Etanol	FWD	1761	81	110	04.99-05.03	■
1.9 TD (D8B (XUD9TE))		Diesel	FWD	1905	69	94	10.95-10.97	■
2.0 HDI 110 (RHS (DW10ATED))		Diesel	FWD	1997	79	107	08.01-05.04	■
2.0 HDI 110 (RHZ (DW10ATED))		Diesel	FWD	1997	79	107	08.01-05.04	■
2.0 HDI 110 (RHZ (DW10ATED))		Diesel	FWD	1997	80	109	06.98-08.01	■
2.1 TD 12V (P8C (XUD11BTE))		Diesel	FWD	2088	80	109	01.96-05.04	■
2.2 HDi (4HX (DW12TED4))		Diesel	FWD	2179	98	133	03.00-05.04	■
<b>806 (AF_) 06.94-02.03</b>					<b>Box Body/MPV (Large MPV-M1 Segment)</b>			
2.0 (AFRFNC)		Gasolina	FWD	1997	100	136	05.00-02.03	■
2.0 (AFRFVC)		Gasolina	FWD	1998	97	132	05.98-09.00	■
<b>806 (221) 06.94-08.02</b>					<b>MPV (Large MPV-M1 Segment)</b>			
2.0 16V (RFN (EW10J4))		Gasolina	FWD	1997	100	136	09.00-08.02	■
2.0 16V (RFV (XU10J4R))		Gasolina	FWD	1998	97	132	05.98-09.00	■