

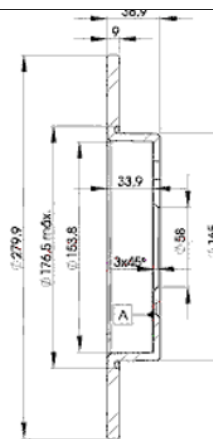
LISTA DE APLICACIONES - BUYERS GUIDE

78BD4341-2



Weight: 8.044

O.E.M.	MAKE
0004341-V00-10000	SMART
0004341-V00-20000	SMART
0004341-V00-30000	SMART
0004341-V00-40000	SMART
C0002052-V02-1	SMART



78BD4341-2

E1 90R-02C0415/0088



Ø280x9x38

MAKE

KIA

SMART



Trac.	CC	Kw	CV
-------	----	----	----



Front / Rear

KIA

BESTA 07.86-12.03

Bus (Minibus-M2-Segment)

2.2 D (HW)	Diesel	RWD	2184	48	65	07.92-12.03	■
2.2 D (R2)	Diesel	RWD	2184	48	65	07.92-12.03	■

SMART

CABRIO (450) 03.00-01.04

Convertible (City car-A Segment)

0.6 (S1OLA1, 450.441, 450.442, 450.443) (M 160 E6AL B03)	Gasolina	RWD	599	40	55	03.00-01.04	■
0.6 (S1OLA1, 450.441, 450.442, 450.443) (M 160.910)	Gasolina	RWD	599	40	55	03.00-01.04	■
0.6 (S1OLD2, 450.452) (M 160 E6AL B05)	Gasolina	RWD	599	45	61	01.01-01.04	■
0.6 (S1OLD2, 450.452) (M 160.910)	Gasolina	RWD	599	45	61	01.01-01.04	■
0.6 (450.432) (M 160.910)	Gasolina	RWD	599	52	71	06.02-01.04	■
0.7 (450.452, 450.432) (M 160.920)	Gasolina	RWD	698	45	61	01.03-01.04	■
0.7 (450.433) (M 160.920)	Gasolina	RWD	698	55	75	01.03-01.04	■
0.8 CDI (S1OLC1, 450.401, 450.402, 450.403, 450.400) (OM 660 DE 8LA)	Diesel	RWD	799	30	41	03.01-01.04	■
0.8 CDI (S1OLC1, 450.401, 450.402, 450.403, 450.400) (OM 660.940)	Diesel	RWD	799	30	41	03.01-01.04	■

CITY-COUPE (450) 07.98-01.04

Coupe (City car-A Segment)

0.6 (S1CLB1, 450.331, 450.336) (M 160 E6AL B04)	Gasolina	RWD	599	33	45	07.98-01.04	■
0.6 (S1CLB1, 450.331, 450.336) (M 160.910)	Gasolina	RWD	599	33	45	07.98-01.04	■
0.6 (S1CLA1, 450.341) (M 160 E6AL B03)	Gasolina	RWD	599	40	55	07.98-01.04	■
0.6 (S1CLA1, 450.341) (M 160.910)	Gasolina	RWD	599	40	55	07.98-01.04	■
0.6 (450.352, 450.353) (M 160 E6AL B05)	Gasolina	RWD	599	45	61	01.01-01.04	■
0.6 (450.352, 450.353) (M 160.910)	Gasolina	RWD	599	45	61	01.01-01.04	■

LISTA DE APLICACIONES - BUYERS GUIDE

0.6 (450.330, 450.332) (M 160.910)	Gasolina	RWD	599	52	71	06.02-01.04	■
0.7 (450.330) (M 160.920)	Gasolina	RWD	698	37	50	01.03-01.04	■
0.7 (450.352, 450.353) (M 160.920)	Gasolina	RWD	698	45	61	01.03-01.04	■
0.7 (450.333) (M 160.920)	Gasolina	RWD	698	55	75	01.03-01.04	■
0.8 CDI (S1CLC1, 450.300, 450.301, 450.302, 450.303,... (OM 660 DE 8LA)	Diesel	RWD	799	30	41	11.99-01.04	■
0.8 CDI (S1CLC1, 450.300, 450.301, 450.302, 450.303,... (OM 660.940)	Diesel	RWD	799	30	41	11.99-01.04	■
CROSSBLADE (450) 06.02-12.03				Convertible (City car-A Segment)			
0.6 (450.418) (M 160.910)	Gasolina	RWD	599	52	71	06.02-12.03	■
FORTWO (450) 01.04-01.07				Convertible (City car-A Segment)			
0.7 (450.452) (M 160.920)	Gasolina	RWD	698	45	61	01.04-01.07	■
0.7 (450.433) (M 160.920)	Gasolina	RWD	698	55	75	01.04-01.07	■
0.8 CDI (450.401, 450.402, 450.403, 450.400) (OM 660 DE 8LA)	Diesel	RWD	799	30	41	01.04-01.07	■
0.8 CDI (450.401, 450.402, 450.403, 450.400) (OM 660.940)	Diesel	RWD	799	30	41	01.04-01.07	■
FORTWO (450) 01.04-02.07				Coupe (City car-A Segment)			
0.7 (450.330) (M 160.920)	Gasolina	RWD	698	37	50	01.04-01.07	■
0.7 (450.352, 450.332) (M 160.920)	Gasolina	RWD	698	45	61	01.04-01.07	■
0.7 (450.333) (M 160.920)	Gasolina	RWD	698	55	75	01.04-01.07	■
0.8 CDI (450.300, 450.301, 450.302, 450.303, 450.306) (OM 660.940)	Diesel	RWD	799	30	41	01.04-01.07	■
ROADSTER (452) 04.03-11.05				Convertible (City car-A Segment)			
0.7 (452.432) (M 160.921)	Gasolina	RWD	698	45	61	04.03-11.05	■
0.7 (452.434) (M 160.922)	Gasolina	RWD	698	60	82	04.03-11.05	■
0.7 Brabus (452.437) (M 160.923)	Gasolina	RWD	698	74	101	12.03-11.05	■
ROADSTER (452) 04.03-11.05				Coupe (City car-A Segment)			
0.7 (452.332) (M 160.922)	Gasolina	RWD	698	45	61	06.03-11.05	■
0.7 (452.334) (M 160.921)	Gasolina	RWD	698	60	82	04.03-11.05	■
0.7 Brabus (452.337) (M 160.923)	Gasolina	RWD	698	74	101	12.03-11.05	■