

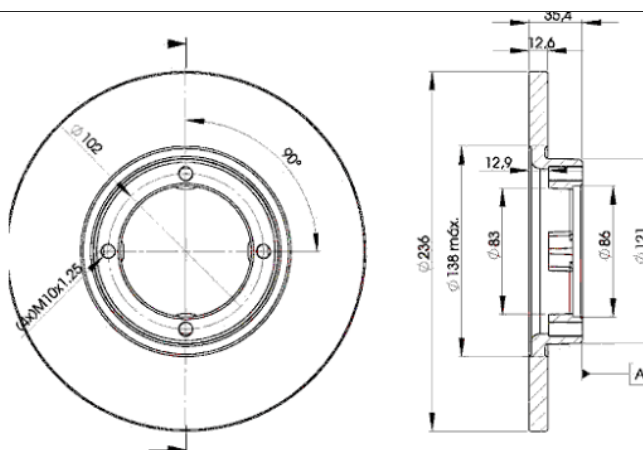
LISTA DE APLICACIONES - BUYERS GUIDE

78BD4392-2



Weight: 7.448

O.E.M.	MAKE
9628 4392	DAEWOO
9632 0531	DAEWOO
9645 5424	DAEWOO



78BD4392-2



Ø236x12.5x35.5

MAKE
CHEVROLET
CHEVROLET (SGMW)
DAEWOO
FSO
PONTIAC
RAVON
UZ-DAEWOO



Trac.	CC	Kw	CV
-------	----	----	----



Front / Rear

CHEVROLET

MATIZ II / SPARK (M200, M250) 03.05-

Hatchback (City car-A Segment)

0.8		Gasolina	FWD	796	37	50	10.10-	■
0.8 (LBF(49CUL3))		Gasolina	FWD	796	38	52	03.05-12.13	■
0.8 (LQ2(49CUL3))		Gasolina	FWD	796	38	52	03.05-12.13	■
1.0 LPG		Gasolina	FWD	995	44	60	01.07-	■
1.0 (B10S)		Gasolina	FWD	995	46	62	01.08-12.13	■
1.0 (LQ4(61CUL4))		Gasolina	FWD	995	47	64	03.05-12.07	■
1.0 (B10S1)		Gasolina	FWD	995	48	65	01.07-	■
1.0 (LA2)		Gasolina	FWD	995	48	65	01.07-	■
1.0 (LQ4(61CUL4))		Gasolina	FWD	995	49	67	03.05-	■
0.8 LPG (LBF(49CUL3))		Gasol./G as (LPG)	FWD	796	38	52	03.05-12.07	■
0.8 LPG (LQ2(49CUL3))		Gasol./G as (LPG)	FWD	796	38	52	03.05-12.07	■
1.0 LPG (LA2)		Gasol./G as (LPG)	FWD	995	49	67	03.05-03.11	■
1.0 LPG (LQ4(61CUL4))		Gasol./G as (LPG)	FWD	995	49	67	03.05-03.11	■

SPARK II (M200, M250) 01.05-08.14

Hatchback Van (City car-A Segment)

0.8		Gasolina	FWD	796	38	52	01.07-08.14	■
-----	--	----------	-----	-----	----	----	-------------	---

SPARK II (M200,M250) 05.05-

Hatchback (City car-A Segment)

0.8 (LBF(49CUL3))	09/05-	Gasolina	FWD	796	37	50	05.05-02.10	■
0.8 (LQ2(49CUL3))	09/05-	Gasolina	FWD	796	37	50	05.05-02.10	■
1.0 SX (LA2)		Gasolina	FWD	995	44	60	06.09-	■
1.0 LPG		Gasolina	FWD	995	46	63	05.05-	■

LISTA DE APLICACIONES - BUYERS GUIDE

SPARK III / BEAT / MATIZ (M300) 12.09-					Hatchback (City car-A Segment)			
1.0	Gasolina	FWD	995	48	65	07.10-	■	
CHEVROLET (SGMW)								
SPARK (KSC) 11.02-12.12					Hatchback (City car-A Segment)			
0.8	Gasolina	FWD	796	38	52	11.02-	■	
1.0	Gasolina	FWD	995	46	63	05.05-		
1.0	Gasolina	FWD	995	51	69	04.10-		
DAEWOO								
MATIZ (KLA4) 08.98-08.02					Hatchback Van (LCVs-N1 Segment)			
0.8 (F8CV)	Gasolina	FWD	796	38	52	08.98-08.02	■	
MATIZ (M100, M150) 09.98-					Hatchback (City car-A Segment)			
0.8	Gasolina	FWD	796	27	37	09.98-04.03	■	
0.8 (F8CV)	Gasolina	FWD	796	38	52	09.98-		■
1.0 (B10S)	Gasolina	FWD	995	46	63	04.03-12.04		■
1.0 (B10S)	Gasolina	FWD	995	47	64	01.03-		■
MATIZ II (M200, M250) 01.05-12.18					Hatchback (City car-A Segment)			
0.8	Gasolina	FWD	796	38	52	01.05-06.10	■	
1.0 (LA2(61CUL4))	Gasolina	FWD	995	49	67	03.05-12.08		■
1.0 (LQ4(61CUL4))	Gasolina	FWD	995	49	67	03.05-12.08		■
MATIZ III (M300) 01.10-11.12					Hatchback (City car-A Segment)			
1.0	Gasolina	FWD	995	51	69	01.10-11.12	■	
FSO								
MATIZ 06.00-04.05					Hatchback (City car-A Segment)			
0.8 (F8CV)	Gasolina	FWD	796	38	52	06.00-04.05	■	
1.0 (B10S)	Gasolina	FWD	995	47	64	06.00-04.05		■
PONTIAC								
MATIZ G2 10.03-12.09					Hatchback (City car-A Segment)			
1.0	Gasolina	FWD	995	49	67	10.03-12.09	■	
RAVON								
MATIZ 10.15-					Hatchback (City car-A Segment)			
0.8	Gasolina	FWD	796	38	52	10.15-	■	
UZ-DAEWOO								
MATIZ 09.98-					Hatchback (City car-A Segment)			
0.8 (F8CV)	Gasolina	FWD	796	38	52	09.98-	■	
1.0 (B10S)	Gasolina	FWD	995	46	63	04.03-		■