

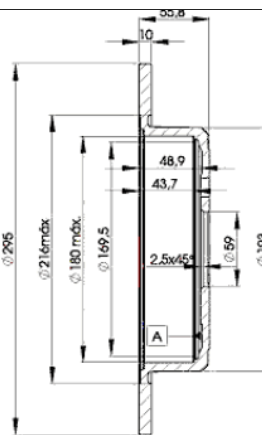
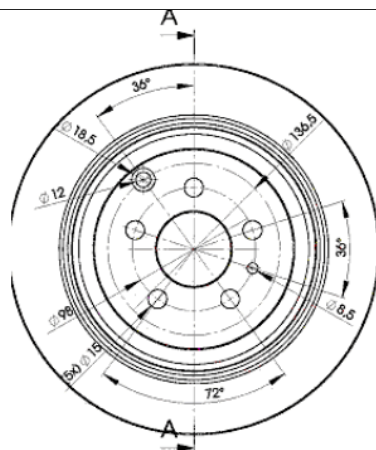
LISTA DE APLICACIONES - BUYERS GUIDE

78BD4621-2



Weight: 10.350

O.E.M.	MAKE
4246.J5	PEUGEOT
4246.J6	CITROËN
9 566 928 380	LANCIA



78BD4621-2

E1 90R-02C0241/0056



Ø295x10x56

MAKE
CITROËN
FIAT
LANCIA
PEUGEOT



Trac.	CC	Kw	CV
-------	----	----	----



Front / Rear

CITROËN

EVASION / SYNERGIE (U6_, AF_) 03.94-10.02

Box Body/MPV (Large MPV-M1 Segment)

HDi (AFRHWB)	vehicles with ABS	Diesel	FWD	1997	80	109	09.99-10.02	■
HDi (AFRHZA)	vehicles with ABS	Diesel	FWD	1997	80	109	09.99-10.02	■

EVASION / SYNERGIE (22, U6) 03.94-07.02

MPV (Large MPV-M1 Segment)

2.0 16V (RFN (EW10J4))		Gasolina	FWD	1997	100	136	05.00-07.02	■
2.0 Turbo C.T. (RGX (XU10J2TE))		Gasolina	FWD	1998	108	147	06.94-07.02	■
2.0 HDi (RHZ (DW10ATED))	vehicles with ABS	Diesel	FWD	1997	80	109	08.99-07.02	■
2.0 HDi		Diesel	FWD	1997	81	110	08.99-07.02	■

FIAT

ULYSSE (220_) 06.94-08.02

MPV (Large MPV-M1 Segment)

1.8 (220.BB5) (LFW (XU7JP))		Gasolina	FWD	1761	73	99	05.97-08.02	■
2.0 16V (220AQ5) (RFN (EW10J4))		Gasolina	FWD	1997	100	136	09.00-08.02	■
2.0 (220.AC5) (RFU (XU10J2C))		Gasolina	FWD	1998	89	121	06.94-08.02	■
2.0 16V (RFV)		Gasolina	FWD	1998	97	132	05.98-09.00	■
2.0 Turbo (220.AD5) (RGX (XU10J2CTE))		Gasolina	FWD	1998	108	147	06.94-08.02	■
1.9 TD (220AH5) (DHX (XUD9TF/L))		Diesel	FWD	1905	66	90	02.95-08.02	■
1.9 TD (DHX (XUD9TF/L))		Diesel	FWD	1905	68	92	05.97-12.99	■
2.0 JTD (RHZ)	vehicles with ABS	Diesel	FWD	1997	80	109	10.99-08.02	■
2.0 JTD 16V (RHW (DW10ATED4))		Diesel	FWD	1997	80	109	05.99-08.02	■
2.1 TD (P8C)		Diesel	FWD	2088	80	109	03.96-10.99	■

LANCIA

LISTA DE APLICACIONES - BUYERS GUIDE

ZETA (22_) 05.95-10.03					MPV (Large MPV-M1 Segment)			
2.0 16V (220AQ5, 220AQ4) (RFN)	Gasolina	FWD	1997	100	136	07.00-09.02	■	
2.0 16V (220AL5) (RFV (XU10J4R))	Gasolina	FWD	1998	97	132	05.98-07.00	■	
2.0 Turbo (220AD5, 220CD5) (RGX (XU10J2TE))	Gasolina	FWD	1998	108	147	05.95-09.02	■	
2.0 JTD (220.AR5, 220.AN5) (RHZ (DW10ATED))	Diesel	FWD	1997	80	109	09.99-09.02	■	
2.0 JTD 16V (220AN5)	Diesel	FWD	1997	80	109	09.99-09.02	■	
2.0 JTD 16V (220.AR5OOL) (RHW (DW10ATED4))	Diesel	FWD	1997	81	110	04.01-10.03	■	
2.1 TD (220AJ5) (P 8 C)	Diesel	FWD	2088	80	109	05.96-09.99	■	
PEUGEOT								
806 (AF_) 06.94-02.03					Box Body/MPV (Large MPV-M1 Segment)			
2.0 (AFRGXC)	Gasolina	FWD	1998	108	147	02.97-05.00	■	
HDi (AFRHZC)	Diesel	FWD	1997	80	109	06.99-02.03	■	
806 (221) 06.94-08.02					MPV (Large MPV-M1 Segment)			
2.0 Turbo (RGX (XU10J2TE))	Gasolina	FWD	1998	108	147	06.94-08.02	■	
1.9 TD (D8B (XUD9TE))	Diesel	FWD	1905	68	92	05.97-08.02	■	
2.0 HDi (RHZ (DW10ATED))	Diesel	FWD	1997	80	109	08.99-08.02	■	
2.0 HDi 16V (RHW (DW10ATED4))	Diesel	FWD	1997	80	109	08.99-08.02	■	