

LISTA DE APLICACIONES - BUYERS GUIDE

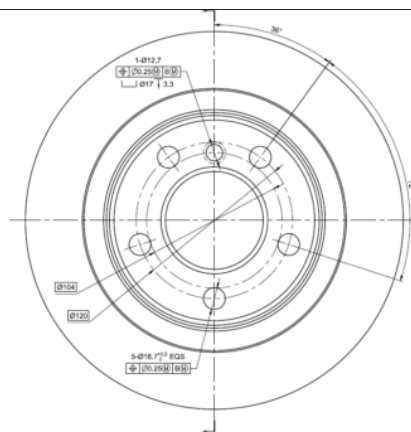
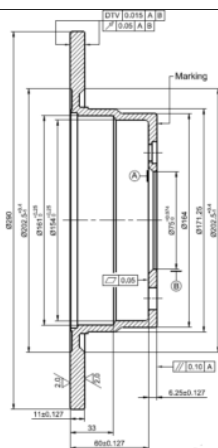
78BD4667-2



8 424073 208538

Weight: 4.950

O.E.M.	MAKE
34 21 6 792 225	BMW
6792225	BMW



78BD4667-2

E1 90R-02C0453/0106



Ø290x11x66.25

MAKE
BMW



Trac.	CC	Kw	CV	
				Front / Rear

BMW

1 Serie II (F20) 07.11-06.19					Hatchback (Compact car-C Segment)				
116 i (B38 B15 A)	not Performance brak, not M technique	Gasolina	RWD	1499	80	109	03.15-06.19	■	
116 i (B38 B15 A)	not Performance brak, not M technique	Gasolina	RWD	1499	80	109	03.15-06.19	■	
118 i (B38 B15 A)	not Performance brak, not M technique	Gasolina	RWD	1499	100	136	07.15-06.19	■	
118 i (B38 B15 A)	not Performance brak, not M technique	Gasolina	RWD	1499	100	136	03.15-06.19	■	
114 i (N13 B16 A)	not Performance brak, not M technique	Gasolina	RWD	1598	75	102	07.12-02.15	■	
114 i (N13 B16 A)	not Performance brak, not M technique	Gasolina	RWD	1598	75	102	07.12-01.15	■	
116 i (N13 B16 A)	not Performance brak, not M technique	Gasolina	RWD	1598	100	136	07.11-02.15	■	
116 i (N13 B16 A)	not Performance brak, not M technique	Gasolina	RWD	1598	100	136	12.11-02.15	■	
118 i (N13 B16 A)	not Performance brak, not M technique	Gasolina	RWD	1598	100	136	03.15-06.15	■	
118 i (N13 B16 A)	not Performance brak, not M technique	Gasolina	RWD	1598	100	136	03.15-06.19	■	
118 i (N13 B16 A)	not Performance brak, not M technique	Gasolina	RWD	1598	125	170	07.11-02.15	■	
120 i (N13 B16 A)	not Performance brak, not M technique	Gasolina	RWD	1598	130	177	03.15-06.16	■	
120 i Active Flex	not Performance brak, not M technique	Gasolina	FWD	1997	135	184	03.15-	■	
120 i (B48 B20 A)	not Performance brak, not M technique	Gasolina	RWD	1998	135	184	07.16-06.19	■	
114 D (B37 D15 A)	not Performance brak, not M technique	Diesel	RWD	1496	70	95	07.15-06.19	■	
114 D (B37 D15 A)	not Performance brak, not M technique	Diesel	RWD	1496	70	95	06.15-05.19	■	

LISTA DE APLICACIONES - BUYERS GUIDE

116 d (B37 D15 A)	not Performance brak, not M technique	Diesel	RWD	1496	85	116	03.15-06.19	■
116 d (B37 D15 A)	not Performance brak, not M technique	Diesel	RWD	1496	85	116	03.15-05.19	■
114 D (N47 D16 A)	not Performance brak, not M technique	Diesel	RWD	1598	70	95	11.12-06.15	■
114 D (N47 D16 A)	not Performance brak, not M technique	Diesel	RWD	1598	70	95	07.12-05.19	■
116 d (N47 D16 A)	not Performance brak, not M technique	Diesel	RWD	1598	85	116	03.12-02.15	■
116 d (N47 D16 A)	not Performance brak, not M technique	Diesel	RWD	1598	85	116	12.11-02.15	■
116 d (N47 D20 C)	not Performance brak, not M technique	Diesel	RWD	1995	85	116	07.11-02.15	■
116 d (N47 D20 C)	not Performance brak, not M technique	Diesel	RWD	1995	85	116	07.12-02.15	■
118 d (B47 D20 A)	not Performance brak, not M technique	Diesel	RWD	1995	100	136	07.11-06.19	■
118 d (N47 D20 C)	not Performance brak, not M technique	Diesel	RWD	1995	100	136	07.11-06.19	■
118 d (N47 D20 C)	not Performance brak, not M technique	Diesel	RWD	1995	100	136	12.11-06.19	■
118 d (N47 D20 C)	not Performance brak, not M technique	Diesel	RWD	1995	105	143	07.11-02.15	■
118 d (N47 D20 C)	not Performance brak, not M technique	Diesel	RWD	1995	105	143	12.11-02.15	■
118 d xDrive (N47 D20 C)	not Performance brak, not M technique	Diesel	4WD	1995	105	143	07.13-02.15	■
118 d xDrive (N47 D20 C)	not Performance brak, not M technique	Diesel	4WD	1995	105	143	05.13-02.15	■
118 d (B47 D20 A)	not Performance brak, not M technique	Diesel	RWD	1995	110	150	03.15-06.19	■
118 d (B47 D20 A)	not Performance brak, not M technique	Diesel	RWD	1995	110	150	03.15-06.19	■
118 d xDrive (B47 D20 A)	not Performance brak, not M technique	Diesel	4WD	1995	110	150	03.15-06.19	■
118 d xDrive (B47 D20 A)	not Performance brak, not M technique	Diesel	4WD	1995	110	150	03.15-05.19	■
1 Serie II Van (F20) 03.15-06.19					Hatchback Van (Compact car-C Segment)			
118 i (B38 B15 A)	not Performance brak, not M technique	Gasolina	RWD	1499	100	136	07.15-06.19	■
120 i (B48 B20 A)	not Performance brak, not M technique	Gasolina	RWD	1998	135	184	07.16-06.19	■
118 d (B47 D20 A)	not Performance brak, not M technique	Diesel	RWD	1995	110	150	03.15-06.19	■
2 Serie (F23) 03.14-					Convertible (Compact car-C Segment)			
218i (B38 B15 A)	not Performance brak, not M technique	Gasolina	RWD	1499	100	136	03.15-06.21	■
218i	not M technique	Gasolina	RWD	1998	100	136	11.20-06.21	■
218d (B47 D20 A)	not Performance brak, not M technique	Diesel	RWD	1995	100	136	07.15-09.20	■
218d (B47 D20 A)	not Performance brak, not M technique	Diesel	RWD	1995	110	150	07.15-09.20	■
2 Serie (F22, F87) 10.12-					Coupe (Compact car-C Segment)			
218i (B38 B15 A)	not Performance brak, not M technique	Gasolina	RWD	1499	100	136	03.15-06.21	■
228 i (N20 B20 A)	not Performance brak, not M technique	Gasolina	RWD	1997	179	243	01.14-	■
218d (B47 D20 A)	not Performance brak, not M technique	Diesel	RWD	1995	100	136	03.14-09.20	■
218d (N47 D20 C)	not Performance brak, not M technique	Diesel	RWD	1995	100	136	03.14-09.20	■
218d (N47 D20 C)	not Performance brak, not M technique, Republic Korea	Diesel	RWD	1995	105	143	03.14-06.15	■
218d (B47 D20 A)	not Performance brak, not M technique	Diesel	RWD	1995	110	150	07.15-09.20	■