

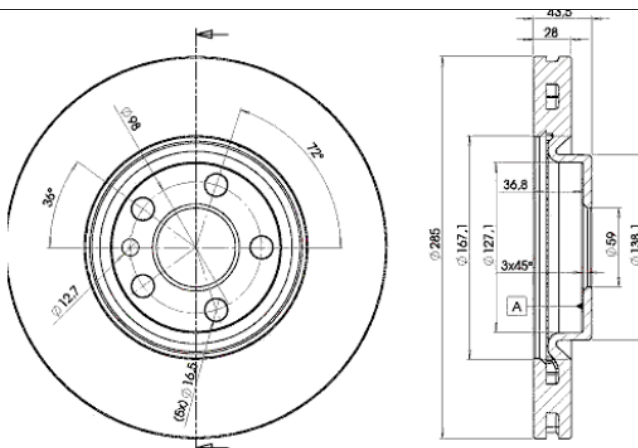
# LISTA DE APLICACIONES - BUYERS GUIDE

## 78BD4678-2



Weight: 15.624

O.E.M.	MAKE
1 325 772 080	LANCIA
1 331 301 080	LANCIA
1 340 179 080	LANCIA
1 340 193 080	LANCIA
4246.P1	PEUGEOT
4246.P2	PEUGEOT



## 78BD4678-2



Ø285x28x43.5

MAKE
CITROËN
FIAT
LANCIA
MG (SAIC)
PEUGEOT



Trac.	CC	Kw	CV		
					Front / Rear

### CITROËN

#### AX (ZA-\_) 07.86-12.98

Electric	Eléctrico	FWD		28	38	11.96-04.97	■
----------	-----------	-----	--	----	----	-------------	---

#### C8 (EA\_, EB\_) 06.02-

#### Box Body/MPV (LCVs-N1 Segment)

2.0 (EBRFNC, EBRFNE)	Gasolina	FWD	1997	100	136	11.03-11.04	■
2.0 (EBRFJC)	Gasolina	FWD	1997	103	140	06.04-12.11	■
2.2 (EB3FZC)	Gasolina	FWD	2230	116	158	11.03-08.07	■
HDi 110 (EBRHTB)	Diesel	FWD	1997	81	110	11.03-12.09	■
HDi (EB4HWB)	Diesel	FWD	2179	94	128	11.03-07.06	■

#### C8 (EA\_, EB\_) 06.02-

#### MPV (Large MPV-M1 Segment)

2.0 (RFN (EW10J4))	Gasolina	FWD	1997	100	136	07.02-	■
2.0 16V (RFJ (EW10A))	Gasolina	FWD	1997	103	140	09.05-	■
2.2 (3FZ (EW12J4))	Gasolina	FWD	2230	116	158	07.02-	■
2.0 HDi (RHM (DW10ATED4))	Diesel	FWD	1997	79	107	07.02-	■
2.0 HDi (RHT (DW10ATED4))	Diesel	FWD	1997	79	107	07.02-	■
2.0 HDi (RHW (DW10ATED4))	Diesel	FWD	1997	80	109	07.02-	■
2.0 HDi (RHT (DW10ATED4))	Diesel	FWD	1997	81	110	07.02-	■
2.0 HDi (RHK (DW10UTED4))	Diesel	FWD	1997	88	120	07.06-	■
2.0 HDi 135 (RHD (DW10CB))	Diesel	FWD	1997	100	136	03.06-	■
2.0 HDi 135 (RHD (DW10CTED4))	Diesel	FWD	1997	100	136	03.06-	■
2.0 HDi 135 (RHR (DW10BTED4))	Diesel	FWD	1997	100	136	03.06-	■
2.2 HDi (4HW (DW12TED4))	Diesel	FWD	2179	94	128	07.02-	■

#### JUMPY / DISPATCH (U6U\_) 06.94-12.06

#### Bus (Minibus-M2-Segment)

2.0 (RFN (EW10J4))	Gasolina	FWD	1997	100	136	04.00-12.06	■
--------------------	----------	-----	------	-----	-----	-------------	---

# LISTA DE APLICACIONES - BUYERS GUIDE

2.0 i 16V (RFN (EW10J4))	12/03-	Gasolina	FWD	1997	102	138	03.00-10.06	■
2.0 HDI 110 (RHW (DW10ATED4))		Diesel	FWD	1997	80	109	03.00-10.06	■
<b>JUMPY / DISPATCH (BU_, BV_, BW_, BX_) 10.99-10.06</b>					<b>Platform/Chassis (LCVs-N1 Segment)</b>			
2.0 (RFN (EW10J4))		Gasolina	FWD	1997	100	136	12.03-10.06	■
2.0 HDi 95 (RHX (DW10BTED))	09/03-	Diesel	FWD	1997	69	94	10.99-10.06	■
2.0 HDI 110 (RHZ (DW10ATED))		Diesel	FWD	1997	80	109	12.03-10.06	■
2.0 HDI 110 (RHZ (DW10BTED))		Diesel	FWD	1997	80	109	12.03-10.06	■
2.0 HDI 110 (RHZ (DW10BTED+))		Diesel	FWD	1997	80	109	12.03-10.06	■
2.0 HDI 110 (RHZ (DW10CTED))		Diesel	FWD	1997	80	109	12.03-10.06	■
2.0 HDI 110 (RHZ (DW10CTED+))		Diesel	FWD	1997	80	109	12.03-10.06	■
2.0 HDi 110 16V (RHW (DW10ATED4))		Diesel	FWD	1997	80	109	12.03-10.06	■
<b>JUMPY / DISPATCH (BS_, BT_, BY_, BZ_) 06.94-10.06</b>					<b>Van (LCVs-N1 Segment)</b>			
2.0 (RFN (EW10J4))		Gasolina	FWD	1997	100	136	04.00-10.06	■
2.0 HDI 110 (RHW (DW10ATED4))		Diesel	FWD	1997	80	109	01.02-10.06	■
<b>FIAT</b>								
<b>SCUDO (220_) 02.96-12.06</b>					<b>Bus (Minibus-M2-Segment)</b>			
2.0 JTD 16V (RHW (DW10ATED4))		Diesel	FWD	1997	80	109	05.99-12.06	■
<b>SCUDO (220_) 09.96-12.06</b>					<b>Platform/Chassis (LCVs-N1 Segment)</b>			
2.0 JTD (RHX)		Diesel	FWD	1997	69	94	10.99-12.06	■
<b>ULYSSE II (179_) 08.02-06.11</b>					<b>MPV (Large MPV-M1 Segment)</b>			
2.0 (179BXA11, 179BXA1A) (RFN (EW10J4))		Gasolina	FWD	1997	100	136	08.02-06.11	■
3.0 (XFW)		Gasolina	FWD	2946	150	204	08.02-06.11	■
2.0 JTD (RHM (DW10ATED4))		Diesel	FWD	1997	79	107	05.03-08.06	■
2.0 JTD (RHW (DW10ATED4))		Diesel	FWD	1997	80	109	08.02-08.06	■
2.0 D Multijet (RHK)		Diesel	FWD	1997	88	120	05.06-06.11	■
2.0 D Multijet (RHR)		Diesel	FWD	1997	100	136	05.06-06.11	■
2.2 JTD (4HW (DW12ATED4))		Diesel	FWD	2179	94	128	08.02-08.06	■
<b>LANCIA</b>								
<b>PHEDRA (179_) 09.02-11.10</b>					<b>MPV (Large MPV-M1 Segment)</b>			
2.0 (179AXA11, 179AXA1A) (RFN (EW10J4))		Gasolina	FWD	1997	100	136	09.02-11.10	■
2.0 JTD (179.AXE1A) (RHM (DW10ATED4))		Diesel	FWD	1997	79	107	07.03-11.10	■
2.0 JTD (179AXB1A) (RHW (DW10ATED4))		Diesel	FWD	1997	80	109	09.02-11.10	■
2.0 JTD (179.AXH1B, 179.BXH1B) (RHK (DW10UTED4))		Diesel	FWD	1997	88	120	06.06-11.10	■
2.0 D Multijet (179.AXL1B, 179.BXL1B) (RHR (DW10BTED4))		Diesel	FWD	1997	100	136	07.06-11.10	■
2.2 JTD (179AXC1A) (4HW (DW12ATED4))		Diesel	FWD	2179	94	128	09.02-11.10	■
<b>MG (SAIC)</b>								
<b>6 12.09-</b>					<b>Hatchback (Executive car-E Segment)</b>			
1.8		Gasolina	FWD	1795	98	133	12.09-12.17	■
1.8 Turbo		Gasolina	FWD	1796	118	160	12.09-	■
<b>6 12.09-</b>					<b>Saloon (Executive car-E Segment)</b>			
1.8		Gasolina	FWD	1795	98	133	01.11-12.15	■
1.8 Turbo (18K4G)		Gasolina	FWD	1796	118	160	12.09-	■
<b>PEUGEOT</b>								
<b>807 (EB_) 06.02-</b>					<b>Box Body/MPV (Large MPV-M1 Segment)</b>			
2.0 HDi (EBRHMEF)		Diesel	FWD	1997	79	107	06.02-05.06	■
2.0 HDi (EBRHTBF, EBRHWBF)		Diesel	FWD	1997	80	109	04.04-05.06	■

# LISTA DE APLICACIONES - BUYERS GUIDE

HDi (EB4HWGF)	Diesel	FWD	2179	94	128	04.04-05.06	■
<b>807 (EB_) 06.02-</b>				<b>MPV (Large MPV-M1 Segment)</b>			
2.0 (RFN (EW10J4))	Gasolina	FWD	1997	100	136	06.02-	■
2.0 16V (RFJ (EW10A))	Gasolina	FWD	1997	103	140	09.05-	■
2.2 (3FZ (EW12J4))	Gasolina	FWD	2230	116	158	06.02-	■
2.0 HDi (RHM (DW10ATED4))	Diesel	FWD	1997	79	107	06.02-05.06	■
2.0 HDi (RHT (DW10ATED4))	Diesel	FWD	1997	79	107	06.02-05.06	■
2.0 HDi (RHW (DW10ATED4))	Diesel	FWD	1997	79	107	06.02-05.06	■
2.0 HDi (RHW (DW10ATED4))	Diesel	FWD	1997	80	109	04.04-	■
2.0 HDi (RHK (DW10UTED4))	Diesel	FWD	1997	88	120	02.06-	■
2.0 HDi (RHR (DW10BTED4))	Diesel	FWD	1997	100	136	06.06-	■
2.0 HDi (RHR (DW10CB))	Diesel	FWD	1997	100	136	06.06-	■
2.2 HDi (4HW (DW12BTED4))	Diesel	FWD	2179	94	128	06.02-	■
2.2 HDi (4HW (DW12TED4))	Diesel	FWD	2179	100	136	04.04-05.06	■
<b>EXPERT (223) 12.95-12.06</b>				<b>Platform/Chassis (LCVs-N1 Segment)</b>			
2.0 HDi	Diesel	FWD	1997	80	109	10.00-10.06	■