

# LISTA DE APLICACIONES - BUYERS GUIDE

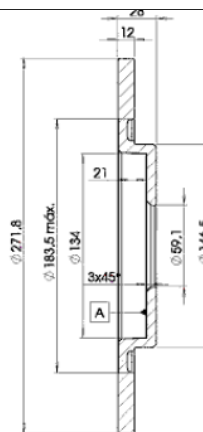
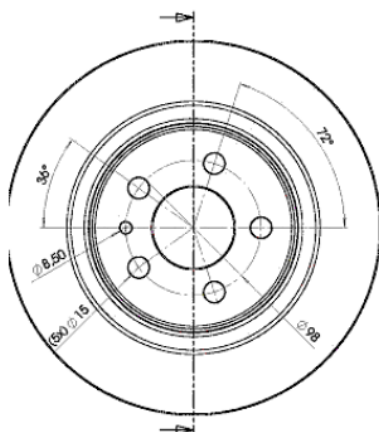
## 78BD4679-2



8 424073 146083

Weight: 8.912

O.E.M.	MAKE
4246.P3	PEUGEOT
4246.P4	PEUGEOT
9 464 222 687	LANCIA



## 78BD4679-2

E1 90R-02C0415/0001



Ø271.8x12x28.3

MAKE
CITROËN
FIAT
LANCIA
PEUGEOT



Trac.	CC	Kw	CV
-------	----	----	----



Front / Rear

### CITROËN

#### C8 (EA\_, EB\_) 06.02-

#### Box Body/MPV (LCVs-N1 Segment)

2.0 (EBRFNC, EBRFNE)	Gasolina	FWD	1997	100	136	11.03-11.04	■
2.0 (EBRFJC)	Gasolina	FWD	1997	103	140	06.04-12.11	■
2.2 (EB3FZC)	Gasolina	FWD	2230	116	158	11.03-08.07	■
3.0 (EBXFWF, EAXFWF)	Gasolina	FWD	2946	150	204	11.03-10.07	■
HDi 110 (EBRHTB)	Diesel	FWD	1997	81	110	11.03-12.09	■
HDi (EB4HWB)	Diesel	FWD	2179	94	128	11.03-07.06	■

#### C8 (EA\_, EB\_) 06.02-

#### MPV (Large MPV-M1 Segment)

2.0 (RFN (EW10J4))	Gasolina	FWD	1997	100	136	07.02-	■
2.0 16V (RFJ (EW10A))	Gasolina	FWD	1997	103	140	09.05-	■
2.2 (3FZ (EW12J4))	Gasolina	FWD	2230	116	158	07.02-	■
3.0 V6 (XFX (ES9J4S))	Gasolina	FWD	2946	150	204	07.02-	■
2.0 HDi (RHM (DW10ATED4))	Diesel	FWD	1997	79	107	07.02-	■
2.0 HDi (RHT (DW10ATED4))	Diesel	FWD	1997	79	107	07.02-	■
2.0 HDi (RHW (DW10ATED4))	Diesel	FWD	1997	80	109	07.02-	■
2.0 HDi (RHT (DW10ATED4))	Diesel	FWD	1997	81	110	07.02-	■
2.0 HDi (RHK (DW10UTED4))	Diesel	FWD	1997	88	120	07.06-	■
2.0 HDi 135 (RHD (DW10CB))	Diesel	FWD	1997	100	136	03.06-	■
2.0 HDi 135 (RHD (DW10CTED4))	Diesel	FWD	1997	100	136	03.06-	■
2.0 HDi 135 (RHR (DW10BTED4))	Diesel	FWD	1997	100	136	03.06-	■
2.0 HDi 165 (RHH (DW10CTED4))	Diesel	FWD	1997	120	163	03.06-	■
2.2 HDi (4HW (DW12TED4))	Diesel	FWD	2179	94	128	07.02-	■
2.2 HDi (4HP (DW12BTED4))	Diesel	FWD	2179	120	163	06.07-	■
2.2 HDi (4HR (DW12BTED4))	Diesel	FWD	2179	120	163	06.07-	■

# LISTA DE APLICACIONES - BUYERS GUIDE

2.2 HDi (4HT (DW12BTED4))	Diesel	FWD	2179	125	170	06.06-12.12	■
FIAT							
ULYSSE II (179_) 08.02-06.11				MPV (Large MPV-M1 Segment)			
2.0 (179BXA11, 179BXA1A) (RFN (EW10J4))	Gasolina	FWD	1997	100	136	08.02-06.11	■
3.0 (XFW)	Gasolina	FWD	2946	150	204	08.02-06.11	■
2.0 JTD (RHM (DW10ATED4))	Diesel	FWD	1997	79	107	05.03-08.06	■
2.0 JTD (RHW (DW10ATED4))	Diesel	FWD	1997	80	109	08.02-08.06	■
2.0 D Multijet (RHK)	Diesel	FWD	1997	88	120	05.06-06.11	■
2.0 D Multijet (RHR)	Diesel	FWD	1997	100	136	05.06-06.11	■
2.2 JTD (4HW (DW12ATED4))	Diesel	FWD	2179	94	128	08.02-08.06	■
2.2 JTD (4HP)	Diesel	FWD	2179	120	163	03.08-06.11	■
2.2 JTD (4HR)	Diesel	FWD	2179	120	163	03.08-06.11	■
2.2 D Multijet (4HS)	Diesel	FWD	2179	125	170	03.08-06.11	■
2.2 D Multijet (4HT (DW12BTED4))	Diesel	FWD	2179	125	170	03.08-06.11	■
LANCIA							
PHEDRA (179_) 09.02-11.10				MPV (Large MPV-M1 Segment)			
2.0 (179AXA11, 179AXA1A) (RFN (EW10J4))	Gasolina	FWD	1997	100	136	09.02-11.10	■
3.0 V6 (179.BXD11) (ES9 J4S)	Gasolina	FWD	2946	150	204	09.02-11.10	■
2.0 JTD (179.AXE1A) (RHM (DW10ATED4))	Diesel	FWD	1997	79	107	07.03-11.10	■
2.0 JTD (179AXB1A) (RHW (DW10ATED4))	Diesel	FWD	1997	80	109	09.02-11.10	■
2.0 JTD (179.AXH1B, 179.BXH1B) (RHK (DW10UTED4))	Diesel	FWD	1997	88	120	06.06-11.10	■
2.0 D Multijet (179.AXL1B, 179.BXL1B) (RHR (DW10BTED4))	Diesel	FWD	1997	100	136	07.06-11.10	■
2.2 JTD (179AXC1A) (4HW (DW12ATED4))	Diesel	FWD	2179	94	128	09.02-11.10	■
2.2 JTD (179.AXN1B, 179.AXQ11, 179.BXN1B, 179.BXQ11) (4HP)	Diesel	FWD	2179	120	163	04.06-11.10	■
2.2 JTD (179.AXN1B, 179.AXQ11, 179.BXN1B, 179.BXQ11) (4HR)	Diesel	FWD	2179	120	163	04.06-11.10	■
2.2 D Multijet (179.AXM1B, 179.AXP11, 179.BXM1B,...) (4HS)	Diesel	FWD	2179	125	170	03.08-11.10	■
2.2 D Multijet (179.AXM1B, 179.AXP11, 179.BXM1B,...) (4HT)	Diesel	FWD	2179	125	170	03.08-11.10	■
PEUGEOT							
807 (EB_) 06.02-				Box Body/MPV (Large MPV-M1 Segment)			
2.0 HDi (EBRHMEF)	Diesel	FWD	1997	79	107	06.02-05.06	■
2.0 HDi (EBRHTBF, EBRHWBF)	Diesel	FWD	1997	80	109	04.04-05.06	■
2.0 HDi	Diesel	FWD	1997	120	163	05.10-	■
HDi (EB4HWGF)	Diesel	FWD	2179	94	128	04.04-05.06	■
807 (EB_) 06.02-				MPV (Large MPV-M1 Segment)			
2.0 (RFN (EW10J4))	Gasolina	FWD	1997	100	136	06.02-	■
2.0 16V (RFJ (EW10A))	Gasolina	FWD	1997	103	140	09.05-	■
2.2 (3FZ (EW12J4))	Gasolina	FWD	2230	116	158	06.02-	■
3.0 V6 (XFX (ES9J4S))	Gasolina	FWD	2946	150	204	06.02-	■
2.0 HDi (RHM (DW10ATED4))	Diesel	FWD	1997	79	107	06.02-05.06	■
2.0 HDi (RHT (DW10ATED4))	Diesel	FWD	1997	79	107	06.02-05.06	■
2.0 HDi (RHW (DW10ATED4))	Diesel	FWD	1997	79	107	06.02-05.06	■
2.0 HDi (RHW (DW10ATED4))	Diesel	FWD	1997	80	109	04.04-	■
2.0 HDi (RHK (DW10UTED4))	Diesel	FWD	1997	88	120	02.06-	■
2.0 HDi (RHR (DW10BTED4))	Diesel	FWD	1997	100	136	06.06-	■
2.0 HDi (RHR (DW10CB))	Diesel	FWD	1997	100	136	06.06-	■
2.0 HDi (RHH (DW10CTED4))	Diesel	FWD	1997	120	163	06.09-	■
2.2 HDi (4HW (DW12BTED4))	Diesel	FWD	2179	94	128	06.02-	■

## LISTA DE APLICACIONES - BUYERS GUIDE

2.2 HDi (4HW (DW12TED4))	Diesel	FWD	2179	100	136	04.04-05.06
2.2 HDi (4HR (DW12BTED4))	Diesel	FWD	2179	120	163	06.06-
2.2 HDi (4HT (DW12BTED4))	Diesel	FWD	2179	125	170	06.06-06.10

