

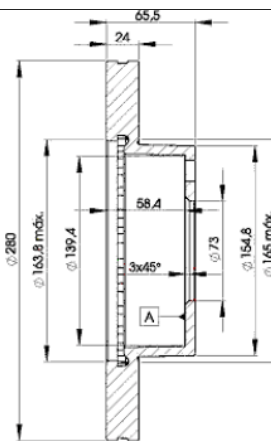
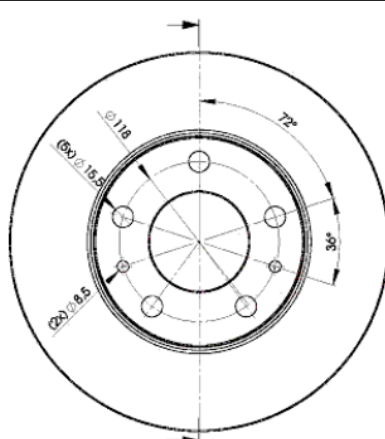
# LISTA DE APLICACIONES - BUYERS GUIDE

## 78BD4681-2



Weight: 13.984

O.E.M.	MAKE
1 300 501 080	FIAT
4 680 623 3	FIAT
4246.L2	PEUGEOT
4246.L3	CITROËN
4246.L4	CITROËN
4246.X9	PEUGEOT
4246.Y1	CITROËN
4249.26	PEUGEOT
4249.27	CITROËN
5 172 837 7	FIAT
5 174 024 4	FIAT
5 184 861 8	FIAT
7 173 890 5	FIAT



## 78BD4681-2

**E1 90R-02C0538/0103**



Ø280x24x65.5

MAKE
CITROËN
FIAT
PEUGEOT



Trac.	CC	Kw	CV		
					Front / Rear

### CITROËN

							Platform/Chassis (LCVs-N1 Segment)			
<b>JUMPER II / RELAY (230) 03.94-04.02</b>										
2.2 HDi (4HY (DW12UTED))	Eq.V_ 1000-1400 kg.	Diesel	FWD	2179	74	101	02.02-06.06	■		
2.5 TD (T8A (DJ5T))	12/01-, Eq.V_ 1000-1400 kg.	Diesel	FWD	2446	76	103	03.94-04.02	■		
2.8 HDI		Diesel	FWD	2798	93	126	10.00-01.02	■		
<b>JUMPER II / RELAY (230L) 02.94-08.02</b>							Van (LCVs-N1 Segment)			
1.9 TD (D8C (XUD9UTF))		Diesel	FWD	1905	68	92	03.94-04.02	■		
2.5 DT 4x4 (THZ (DJ5T))		Diesel	4WD	2446	76	103	10.96-08.97	■		
<b>JUMPER III / RELAY 04.06-</b>							Bus (Minibus-M2-Segment)			
2.0 BlueHDi 110 (AHM (DW10FUE))	Kg. 1400	Diesel	FWD	1997	81	110	07.15-09.19	■		
2.0 BlueHDi 130 (AHN (DW10FUD))	Kg. 1400	Diesel	FWD	1997	96	130	07.15-09.19	■		
2.0 BlueHDi 160 (AHP (DW10FUC))	Kg. 1400	Diesel	FWD	1997	120	163	07.15-09.19	■		
2.2 HDi 100 (4HV (P22DTE))	Kg. 1400	Diesel	FWD	2198	74	101	04.06-	■		
2.2 HDi 110 (4HG (P22DTE))		Diesel	FWD	2198	81	110	07.11-12.20	■		
2.2 HDi 120 (4HU (P22DTE))	Kg. 1400	Diesel	FWD	2198	88	120	04.06-12.16	■		
2.2 HDi 130 (4HH (P22DTE))	Kg. 1400	Diesel	FWD	2198	96	130	07.11-	■		
2.2 HDi 150 (4HJ (P22DTE))	Eq.V_ 3000-3300 kg.	Diesel	FWD	2198	110	150	07.11-	■		
3.0 HDi 160 (F1CE0481D (F30DT))		Diesel	FWD	2999	116	157	09.06-	■		
3.0 HDi 180 (F1CE3481E (F30DTE))	Kg. 3300	Diesel	FWD	2999	130	177	07.11-	■		
<b>JUMPER III / RELAY 04.06-</b>							Platform/Chassis (LCVs-N1 Segment)			
2.0 BlueHDi 110 (AHM (DW10FUE))	Kg. 1400	Diesel	FWD	1997	81	110	11.15-09.19	■		
2.0 BlueHDi 130 (AHN (DW10FUD))	Kg. 1400	Diesel	FWD	1997	96	130	11.15-09.19	■		
2.0 BlueHDi 130 4x4 (AHN (DW10FUD))	Kg. 1400	Diesel	4WD	1997	96	130	11.15-09.19	■		

# LISTA DE APLICACIONES - BUYERS GUIDE

2.0 BlueHDi 160 (AHP (DW10FUC))	Kg. 1400	Diesel	FWD	1997	120	163	11.15-09.19	■
2.0 BlueHDi 160 4x4 (AHP (DW10FUC))	Kg. 1400	Diesel	4WD	1997	120	163	11.15-09.19	■
2.2 HDi 100 (4HV (P22DTE))	Kg. 1400	Diesel	FWD	2198	74	101	04.06-	■
2.2 HDi 110 (4HG (P22DTE))		Diesel	FWD	2198	81	110	07.11-12.20	■
2.2 HDi 120 (4HU (P22DTE))	Kg. 1400	Diesel	FWD	2198	88	120	04.06-12.16	■
2.2 HDi 130 (4HH (P22DTE))	Eq.V_ 3000-3300 kg.	Diesel	FWD	2198	96	130	07.06-	■
2.2 HDi 150 (4HJ (P22DTE))	Eq.V_ 3000-3300 kg.	Diesel	FWD	2198	110	150	07.11-	■
3.0 HDi 160 (F1CE0481D (F30DT))	Kg. 1400	Diesel	FWD	2999	116	157	09.06-12.15	■
3.0 HDi 180 (F1CE3481E (F30DTE))		Diesel	FWD	2999	130	177	07.11-	■
<b>JUMPER III / RELAY 04.06-</b>				<b>Van (LCVs-N1 Segment)</b>				
2.0 BlueHDi 110 (AHM (DW10FUE))	Kg. 1400	Diesel	FWD	1997	81	110	11.15-09.19	■
2.0 BlueHDi 130 (AHN (DW10FUD))	Kg. 1400	Diesel	FWD	1997	96	130	11.15-09.19	■
2.0 BlueHDi 160 (AHP (DW10FUC))	Kg. 1400	Diesel	FWD	1997	120	163	11.15-09.19	■
2.0 BlueHDi 160 4x4 (AHP (DW10FUC))	Kg. 1400	Diesel	4WD	1997	120	163	11.15-09.19	■
2.2 HDi 100 (4HV (P22DTE))	Kg. 1400	Diesel	FWD	2198	74	101	04.06-12.12	■
2.2 HDi 110 (4HG (P22DTE))	Eq.V_ 3000-3300 kg.	Diesel	FWD	2198	81	110	07.11-12.20	■
2.2 HDi 120 (4HU (P22DTE))	Kg. 1400	Diesel	FWD	2198	88	120	04.06-12.16	■
2.2 HDi 130 (4HH (P22DTE))	Eq.V_ 3000-3300 kg.	Diesel	FWD	2198	96	130	07.11-	■
2.2 HDi 150 (4HJ (P22DTE))	Eq.V_ 3000-3300 kg.	Diesel	FWD	2198	110	150	07.11-	■
3.0 HDi 160 (F1CE0481D (F30DT))		Diesel	FWD	2999	116	157	09.06-12.15	■
3.0 HDi 180 (F1CE3481E (F30DTE))	Eq.V_ 3000-3300 kg.	Diesel	FWD	2999	130	177	07.11-	■
<b>FIAT</b>								
<b>DUCATO II (230_) 03.94-05.05</b>				<b>Bus (Minibus-M2-Segment)</b>				
2.0		Gasolina	FWD	1998	74	101	06.94-12.95	■
2.0 4x4 (RFW)	Kg. 1400	Gasolina	4WD	1998	80	109	11.94-11.01	■
2.0 Panorama/Combinato (RFW)	12/01-, ch- 6194400, Eq.V_ 1000-1400 kg.	Gasolina	FWD	1998	80	109	03.94-04.02	■
2.0 (RFL)	Notkg 1800	Gasolina	FWD	1998	81	110	12.01-07.06	■
2.0 4x4 (RFL)	Notkg 1800	Gasolina	4WD	1998	81	110	05.02-07.06	■
2.0 Bipower (RFL)	Notkg 1800	Gasol./Gas (CNG)	FWD	1998	81	110	11.02-07.06	■
1.9 D (DJY)		Diesel	FWD	1905	50	68	04.98-04.02	■
1.9 D (DHX)	Kg. 1400	Diesel	FWD	1905	59	80	05.98-11.01	■
1.9 TD (DHX)		Diesel	FWD	1905	66	90	04.98-04.02	■
1.9 TD (DHX (XUD9TF/L))		Diesel	FWD	1905	66	90	04.98-04.02	■
1.9 D Combinato (230 A2.000)		Diesel	FWD	1929	51	69	06.95-04.02	■
1.9 TD Combinato (230 A4.000)		Diesel	FWD	1929	59	80	08.94-04.02	■
1.9 TD Panorama/Combinato (230 A3.000)		Diesel	FWD	1929	60	82	03.94-04.02	■
2.0 JTD (RHV)	Eq.V_ 1000-1400 kg.	Diesel	FWD	1997	62	84	10.01-04.02	■
2.0 JTD (RHV)	Notkg 1800	Diesel	FWD	1997	62	84	12.01-07.06	■
2.3 JTD (F1AE0481C)	Notkg 1800	Diesel	FWD	2286	81	110	12.01-07.06	■
2.5 TD	Kg. 1400	Diesel	FWD	2499	80	109	06.94-08.98	■
2.5 TD 4x4 (8140.47)	Eq.V_ 1000-1400 kg.	Diesel	4WD	2499	80	109	11.94-04.98	■
2.5 TD 4x4 (8140.47)	Kg. 1400	Diesel	4WD	2499	85	116	06.94-09.01	■
2.5 TDI Panorama/Combinato (8140.47)	Eq.V_ 1000-1400 kg.	Diesel	FWD	2499	85	116	03.94-04.02	■
2.5 D Combinato (8140.67)	12/01-, ch- 6194400, Eq.V_ 1000-1400 kg.	Diesel	FWD	2500	62	84	08.94-04.02	■
2.5 TDI Panorama/Combinato (8140.47R)	Eq.V_ 1000-1400 kg., Kg. 1800	Diesel	FWD	2500	80	109	07.94-04.02	■
2.5 TDI 4x4 (8140.47)	Eq.V_ 1000-1400 kg.	Diesel	4WD	2500	85	116	04.97-04.02	■
2.8 JTD (8140.43S)	Eq.V_ 1000-1400 kg.	Diesel	FWD	2798	94	128	11.00-04.02	■
2.8 JTD (8140.43S)	Notkg 1800	Diesel	FWD	2798	94	128	12.01-	■
2.8 JTD 4x4 (8140.43S)	Eq.V_ 1000-1400 kg.	Diesel	4WD	2798	94	128	11.00-04.02	■

# LISTA DE APLICACIONES - BUYERS GUIDE

2.8 JTD 4x4 (8140.43S)	Notkg 1800	Diesel	4WD	2798	94	128	12.01-07.06	■	
2.8 TD (8140.43)	Notkg 1800	Diesel	FWD	2799	90	122	11.03-07.06	■	
2.8 TD 4x4 (8140.43)	Notkg 1800	Diesel	4WD	2799	90	122	11.03-07.06	■	
2.8 D (8140.63)	11/01-, -12/01, ch- 6194400, - ch 6194399, Eq.V_ 1000-1400 kg.	Diesel	FWD	2800	64	87	02.98-04.02	■	
2.8 TDI (8140.43)	Eq.V_ 1000-1400 kg.	Diesel	FWD	2800	90	122	10.97-04.02	■	
2.8 TDI 4x4 (8140.43)	Eq.V_ 1000-1400 kg.	Diesel	4WD	2800	90	122	07.99-04.02	■	
2.8 JTD (8140.43N)	Notkg 1800	Diesel	FWD	2800	107	145	04.04-07.06	■	
<b>DUCATO II (230_) 03.94-04.02</b>							<b>Platform/Chassis (LCVs-N1 Segment)</b>		
2.0 (RFW)	11/01-, -12/01, ch- 6194399, Eq.V_ 1000-1400 kg.	Gasolina	FWD	1998	80	109	03.94-04.02	■	
1.9 D (DJY)		Diesel	FWD	1905	50	68	04.98-04.02	■	
1.9 TD (DHX)	Kg. 1400	Diesel	FWD	1905	59	80	05.98-11.01	■	
1.9 TD (DHX)		Diesel	FWD	1905	66	90	04.98-04.02	■	
1.9 TD (DHX (XUD9TF/L))		Diesel	FWD	1905	66	90	04.98-04.02	■	
1.9 D (230 A2.000)		Diesel	FWD	1929	51	69	03.94-04.02	■	
1.9 TD CAT (230 A4.000)		Diesel	FWD	1929	59	80	08.94-04.02	■	
1.9 TD (230 A3.000)		Diesel	FWD	1929	60	82	03.94-04.02	■	
2.0 JTD (RHV)	Notkg 1800	Diesel	FWD	1997	62	84	12.01-07.06	■	
2.3 JTD (F1AE0481C)	Notkg 1800	Diesel	FWD	2286	81	110	12.01-07.06	■	
2.5 TD (8140.47)	Kg. 1400	Diesel	FWD	2499	80	109	06.94-08.98	■	
2.5 TD 4x4 (8140.47)	Kg. 1400	Diesel	4WD	2499	80	109	11.94-04.98	■	
2.5 TD (8140.47)	Kg. 1400	Diesel	FWD	2499	85	116	06.94-04.98	■	
2.5 TD 4x4 (8140.47)	Kg. 1400	Diesel	4WD	2499	85	116	11.94-04.98	■	
2.5 D (8140.67)	12/01-, ch- 6194400, Eq.V_ 1000-1400 kg.	Diesel	FWD	2500	62	84	03.94-04.02	■	
2.5 D 4x4 (8140.67)		Diesel	4WD	2500	62	84	03.94-04.02	■	
2.5 TDI (8140.47R)	Eq.V_ 1000-1400 kg.	Diesel	FWD	2500	80	109	03.94-04.02	■	
2.5 TDI	Eq.V_ 1000-1400 kg.	Diesel	FWD	2500	85	116	03.94-04.02	■	
2.5 TDI 4x4 (8140.47)	Eq.V_ 1000-1400 kg.	Diesel	4WD	2500	85	116	06.98-04.02	■	
2.8 JTD (8140.43S)	Eq.V_ 1000-1400 kg.	Diesel	FWD	2798	94	128	11.00-04.02	■	
2.8 JTD		Diesel	FWD	2798	94	128	03.01-04.02	■	
2.8 JTD (8140.43S)	Notkg 1800	Diesel	FWD	2798	94	128	12.01-07.06	■	
2.8 JTD 4x4 (8140.43S)	Notkg 1800	Diesel	4WD	2798	94	128	12.01-07.06	■	
2.8 TD 4x4 (8140.63)	Kg. 1400	Diesel	4WD	2799	64	87	05.98-11.01	■	
2.8 iDTD 4x4 (8140.43)	Eq.V_ 1000-1400 kg.	Diesel	4WD	2799	90	122	05.98-09.01	■	
2.8 JTD (8140.43)	Notkg 1800	Diesel	FWD	2799	90	122	11.03-07.06	■	
2.8 JTD 4x4	Notkg 1800	Diesel	4WD	2799	90	122	11.03-07.06	■	
2.8 D (8140.63)	11/01-, -12/01, ch- 6194399, Eq.V_ 1000-1400 kg.	Diesel	FWD	2800	64	87	02.98-04.02	■	
2.8 TDI (8140.43)	11/01-, -12/01, ch- 6194399, Eq.V_ 1000-1400 kg.	Diesel	FWD	2800	90	122	12.98-04.02	■	
2.8 JTD Power (8140.43N)	Notkg 1800	Diesel	FWD	2800	107	146	04.04-07.06	■	
<b>DUCATO II (230_) 03.94-05.05</b>							<b>Van (LCVs-N1 Segment)</b>		
2.0		Gasolina	FWD	1998	74	101	06.94-12.95	■	
2.0 (RFW)	12/01-, ch- 6194400, Eq.V_ 1000-1400 kg.	Gasolina	FWD	1998	80	109	03.94-04.02	■	
2.0 4x4 (RFW)	Kg. 1400	Gasolina	4WD	1998	80	109	11.94-04.02	■	
2.0 (RFL)	Notkg 1800	Gasolina	FWD	1998	81	110	12.01-07.06	■	
2.0 4x4 (RFL)		Gasolina	4WD	1998	81	110	05.02-07.06	■	
2.0 Bipower (RFL)	Notkg 1800	Gasol./Gas (CNG)	FWD	1998	81	110	11.02-07.06	■	
1.9 D (DJY)		Diesel	FWD	1905	50	68	04.98-04.02	■	

# LISTA DE APLICACIONES - BUYERS GUIDE

1.9 TD (DHX)	Kg. 1400	Diesel	FWD	1905	59	80	05.98-11.01	■
1.9 TD (DHX)		Diesel	FWD	1905	66	90	04.98-04.02	■
1.9 TD (DHX (XUD9TF/L))		Diesel	FWD	1905	66	90	04.98-04.02	■
1.9 D (230 A2.000)		Diesel	FWD	1929	51	69	03.94-04.02	■
1.9 TD CAT (230 A4.000)		Diesel	FWD	1929	59	80	08.94-04.02	■
1.9 TD (230 A3.000)		Diesel	FWD	1929	60	82	03.94-04.02	■
2.0 JTD (RHV)	Eq.V_ 1000-1400 kg.	Diesel	FWD	1997	62	84	10.01-04.02	■
2.0 JTD (RHV)	Notkg 1800	Diesel	FWD	1997	62	84	12.01-07.06	■
2.3 JTD (F1AE0481C)	Notkg 1800	Diesel	FWD	2286	81	110	12.01-07.06	■
2.5 TD (8140.47)	Kg. 1400	Diesel	FWD	2499	80	109	06.94-08.98	■
2.5 TD 4x4 (8140.47)	Eq.V_ 1000-1400 kg.	Diesel	4WD	2499	80	109	11.94-04.98	■
2.5 TD 4x4 (8140.47)	Kg. 1400	Diesel	4WD	2499	85	116	11.94-04.98	■
2.5 D (8140.67)	12/01-, ch- 6194400, Eq.V_ 1000-1400 kg.	Diesel	FWD	2500	62	84	03.94-04.02	■
2.5 TDI (8140.47R)	Eq.V_ 1000-1400 kg.	Diesel	FWD	2500	80	109	03.94-04.02	■
2.5 TDI (8140.47)	Eq.V_ 1000-1400 kg.	Diesel	FWD	2500	85	116	03.94-04.02	■
2.5 TDI 4x4 (8140.47)	Eq.V_ 1000-1400 kg.	Diesel	4WD	2500	85	116	05.98-04.02	■
2.8 JTD (8140.43S)	Eq.V_ 1000-1400 kg.	Diesel	FWD	2798	94	128	11.00-04.02	■
2.8 JTD (8140.43S)	Notkg 1800	Diesel	FWD	2798	94	128	12.01-12.11	■
2.8 JTD 4x4 (8140.43S)	Eq.V_ 1000-1400 kg.	Diesel	4WD	2798	94	128	11.00-04.02	■
2.8 JTD 4x4 (8140.43S)	Notkg 1800	Diesel	4WD	2798	94	128	12.01-07.06	■
2.8 TD (8140.43)	Notkg 1800	Diesel	FWD	2799	90	122	12.01-07.06	■
2.8 TD	Notkg 1800	Diesel	RWD	2799	90	122	11.03-07.06	■
2.8 TD 4x4 (8140.43)	Eq.V_ 1000-1400 kg.	Diesel	4WD	2799	90	122	05.98-09.01	■
2.8 D (8140.63)	11/01-, -12/01, ch- 6194400, - ch 6194399, Eq.V_ 1000-1400 kg.	Diesel	FWD	2800	64	87	05.98-04.02	■
2.8 D 4x4 (8140.63)	Eq.V_ 1000-1400 kg.	Diesel	4WD	2800	64	87	08.98-04.02	■
2.8 TDI (8140.43)	11/01-, -12/01, ch- 6194400, - ch 6194399, Eq.V_ 1000-1400 kg.	Diesel	FWD	2800	90	122	10.97-04.02	■
2.8 TDI 4x4 (8140.43)	Eq.V_ 1000-1400 kg.	Diesel	4WD	2800	90	122	06.99-04.02	■
2.8 JTD Power (8140.43N)	Notkg 1800	Diesel	FWD	2800	107	146	04.04-07.06	■
<b>DUCATO III (250_) 07.06-</b>							<b>Bus (Minibus-M2-Segment)</b>	
140 Multijet 2,2 D		Diesel	FWD	2184	103	140	07.21-10.23	■
100 Multijet 2,2 D (4HV)	Kg. 1400	Diesel	FWD	2198	74	101	07.06-05.11	■
110 Multijet 2,3 D (F1AE3481G)		Diesel	FWD	2287	83	113	10.11-07.14	■
120 Multijet 2,3 D (F1AE0481D)	Kg. 1400	Diesel	FWD	2287	88	120	07.06-10.13	■
130 Multijet 2,3 D		Diesel	FWD	2287	93	126	01.10-	■
130 Multijet 2,3 D (F1AE0481N)		Diesel	FWD	2287	96	131	01.07-	■
130 Multijet 2,3 D (F1AE3481D)		Diesel	FWD	2287	96	131	01.07-	■
130 Multijet 2,3 D (F1AGL411D)		Diesel	FWD	2287	96	131	01.07-	■
150 Multijet 2,3 D (F1AGL411A)		Diesel	FWD	2287	110	150	04.15-	■
150 Multijet 2,3 D (F1AGL411C)		Diesel	FWD	2287	110	150	04.15-	■
180 Multijet 2,3 D		Diesel	FWD	2287	130	177	12.15-	■
150 Multijet 3,0 D (F1CE3481N)		Diesel	FWD	2999	107	146	04.10-07.14	■
160 Multijet 3,0 D (F1CE0481D)		Diesel	FWD	2999	115	156	10.06-05.11	■
160 Multijet 3,0 D (F1CE0481D)	Kg. 1400	Diesel	FWD	2999	116	158	07.06-05.11	■
160 Multijet 3,0 D (F1CE3481M)	Kg. 1400	Diesel	FWD	2999	116	158	07.06-05.11	■
<b>DUCATO III (250_) 07.06-</b>							<b>Platform/Chassis (LCVs-N1 Segment)</b>	
120 Multijet 2,2 D		Diesel	FWD	2184	88	120	07.21-	■
140 Multijet 2,2 D		Diesel	FWD	2184	103	140	07.21-	■
160 Multijet 2,2 D		Diesel	FWD	2184	118	160	07.21-10.23	■

# LISTA DE APLICACIONES - BUYERS GUIDE

180 Multijet 2,2 D		Diesel	FWD	2184	132	180	07.21-	■	
100 Multijet 2,2 D (4HV)	Kg. 1400	Diesel	FWD	2198	74	101	07.06-05.11	■	
110 Multijet 2,3 D (F1AE3481G)		Diesel	FWD	2287	83	113	10.11-07.14	■	
120 Multijet 2,3 D (F1AE0481D)	Kg. 1400	Diesel	FWD	2287	88	120	07.06-	■	
120 Multijet 2,3 D (F1AGL4114)	Kg. 1400	Diesel	FWD	2287	88	120	07.06-	■	
120 Multijet 2,3 D 4x4 (F1AE0481D)		Diesel	4WD	2287	88	120	03.10-	■	
130 Multijet 2,3 D		Diesel	FWD	2287	93	126	08.06-	■	
150 Multijet 2,3 D (F1AGL411C)		Diesel	FWD	2287	110	150	12.15-	■	
180 Multijet 2,3 D (F1AGL4111)		Diesel	FWD	2287	130	177	12.15-	■	
180 Multijet 2,3 D (F1AGL411B)		Diesel	FWD	2287	130	177	12.15-	■	
150 Multijet 3,0 D (F1CE3481N)		Diesel	FWD	2999	107	146	04.10-07.14	■	
160 Multijet 3,0 D (F1CE0481D)	Kg. 1400	Diesel	FWD	2999	116	158	07.06-05.14	■	
140 Natural Power (F1CE0441A)		CNG	FWD	2999	100	136	04.09-	■	
140 Natural Power (F1CFA401A)		CNG	FWD	2999	100	136	04.09-	■	
<b>DUCATO III (250_) 07.06-</b>					<b>Van (LCVs-N1 Segment)</b>				
120 Multijet 2,2 D		Diesel	FWD	2184	88	120	07.21-	■	
140 Multijet 2,2 D		Diesel	FWD	2184	103	140	07.21-	■	
160 Multijet 2,2 D		Diesel	FWD	2184	118	160	07.21-10.23	■	
180 Multijet 2,2 D		Diesel	FWD	2184	132	180	07.21-	■	
100 Multijet 2,2 D (4HV)	Kg. 1400	Diesel	FWD	2198	74	101	07.06-05.11	■	
110 Multijet 2,3 D (F1AE3481G)		Diesel	FWD	2287	83	113	10.11-07.14	■	
120 Multijet 2,3 D (F1AE0481D)	Kg. 1400	Diesel	FWD	2287	88	120	07.06-	■	
120 Multijet 2,3 D (F1AGL4114)	Kg. 1400	Diesel	FWD	2287	88	120	07.06-	■	
120 Multijet 2,3 D 4x4 (F1AE0481D)		Diesel	4WD	2287	88	120	03.10-	■	
130 Multijet 2,3 D		Diesel	FWD	2287	93	126	08.06-12.18	■	
150 Multijet 2,3 D (F1AGL411A)		Diesel	FWD	2287	110	150	12.15-	■	
150 Multijet 2,3 D (F1AGL411C)		Diesel	FWD	2287	110	150	12.15-	■	
180 Multijet 2,3 D (F1AGL4111)		Diesel	FWD	2287	130	177	12.15-	■	
180 Multijet 2,3 D (F1AGL411B)		Diesel	FWD	2287	130	177	12.15-	■	
160 Multijet 3,0 D (F1CE0481D)	Kg. 1400	Diesel	FWD	2999	116	158	07.06-05.11	■	
<b>PEUGEOT</b>									
<b>BOXER II (230P) 03.94-12.09</b>					<b>Bus (Minibus-M2-Segment)</b>				
2.0 i (RFW (XU10J2))	11/01-, -12/01, Eq.V_ 1000-1400 kg.	Gasolina	FWD	1998	80	109	03.94-04.02	■	
2.0 i 4x4 (RFW (XU10J2))	11/01-, -12/01, Eq.V_ 1000-1400 kg.	Gasolina	4WD	1998	80	109	08.96-04.02	■	
1.9 D (D9B (XUD9AU))		Diesel	FWD	1905	51	69	03.94-04.02	■	
1.9 TD (DHY (XUD9TE))		Diesel	FWD	1905	66	90	08.94-04.02	■	
1.9 TD (D8C (XUD9UTF))		Diesel	FWD	1905	68	92	03.94-04.02	■	
1.9 TD 4x4 (D8C (XUD9UTF))		Diesel	4WD	1905	68	92	07.96-04.02	■	
2.0 HDi (RHV (DW10TD))		Diesel	FWD	1997	62	84	12.01-06.06	■	
2.0 HDi (RHV (DW10UTD))		Diesel	FWD	1997	62	84	12.01-06.06	■	
2.2 HDi (4HY (DW12UTED))		Diesel	FWD	2179	74	101	12.01-06.06	■	
2.5 D (T9A (DJ5))		Diesel	FWD	2446	63	86	08.94-04.02	■	
2.5 D 4x4 (T9A (DJ5))		Diesel	4WD	2446	63	86	07.96-04.02	■	
2.5 TD (T8A (DJ5T))	Eq.V_ 1000-1400 kg.	Diesel	FWD	2446	76	103	07.94-12.97	■	
2.5 TD 4x4 (T8A (DJ5T))		Diesel	4WD	2446	76	103	07.96-04.02	■	
2.5 TDI (THX (DJ5TED))	12/01-, Eq.V_ 1000-1400 kg.	Diesel	FWD	2446	79	107	01.97-04.02	■	
2.5 TDI 4x4 (THX (DJ5TED))	Eq.V_ 1000-1400 kg.	Diesel	4WD	2446	79	107	01.97-04.02	■	
2.5 DT	Kg. 1400	Diesel	FWD	2499	62	84	10.97-11.01	■	
2.8 DTiC	Kg. 1400	Diesel	FWD	2798	90	122	10.97-09.00	■	
2.8 HDI (8140.43S (F28DTCR))	Kg. 1400	Diesel	FWD	2798	93	126	10.00-11.01	■	

# LISTA DE APLICACIONES - BUYERS GUIDE

2.8 HDi A las 4 ruedas (8140.43S (F28DTCR))	Kg. 1400	Diesel	4WD	2798	93	126	10.00-11.01	■	
2.8 HDI (8140.43S (F28DTCR))	Eq.V_ 1000-1400 kg.	Diesel	FWD	2798	94	128	11.00-04.02	■	
2.8 HDI (8140.43S (F28DTCR))		Diesel	FWD	2798	94	128	12.01-06.06	■	
2.8 HDi 4x4 (8140.43S (F28DTCR))		Diesel	4WD	2798	94	128	12.01-06.06	■	
2.8 HDI (8140.43N)		Diesel	FWD	2798	107	145	04.04-06.06	■	
<b>BOXER II (ZCT_) 03.94-04.02</b>							<b>Platform/Chassis (LCVs-N1 Segment)</b>		
2.0 i (RFW (XU10J2))	Kg. 1400	Gasolina	FWD	1998	80	109	06.94-04.02	■	
2.0 (RFL (XU10J2U))	Kg. 1400	Gasolina	FWD	1998	81	110	12.01-04.02	■	
1.9 D (DJY (XUD9A))	Kg. 1400	Diesel	FWD	1905	51	69	03.94-04.02	■	
1.9 TD (DHY (XUD9TE))	Kg. 1400	Diesel	FWD	1905	66	90	06.94-04.02	■	
1.9 TD (XUD9TE)	Kg. 1400	Diesel	FWD	1905	66	90	06.94-04.02	■	
1.9 TD (D8C (XUD9UTF))	Kg. 1400	Diesel	FWD	1905	68	92	07.94-04.02	■	
1.9 TD (XUD9TE)	Kg. 1400	Diesel	FWD	1905	68	92	07.94-04.02	■	
2.0 HDi (RHV (DW10TD))		Diesel	FWD	1997	62	84	12.01-06.06	■	
2.0 HDi (RHV (DW10UTD))		Diesel	FWD	1997	62	84	12.01-06.06	■	
2.2 HDi (4HY (DW12UTED))		Diesel	FWD	2179	74	101	12.01-06.06	■	
2.5 D (T9A (DJ5))	Kg. 1400	Diesel	FWD	2446	63	86	03.94-04.02	■	
2.5 D 4x4 (T9A (DJ5))	Kg. 1400	Diesel	4WD	2446	63	86	07.99-04.02	■	
2.5 TD (T8A (DJ5T))	Kg. 1400	Diesel	FWD	2446	76	103	03.94-12.97	■	
2.5 TDI (THX (DJ5TED))	Kg. 1400	Diesel	FWD	2446	79	107	01.97-04.02	■	
2.5 TDI 4x4 (THX (DJ5TED))	Kg. 1400	Diesel	4WD	2446	79	107	07.99-04.02	■	
2.8 TD		Diesel	RWD	2798	90	122	12.01-03.05	■	
2.8 HDI (8140.43S (F28DTCR))	Kg. 1400	Diesel	FWD	2798	93	126	10.00-11.01	■	
2.8 HDi A las 4 ruedas (8140.43S (F28DTCR))	Kg. 1400	Diesel	4WD	2798	93	126	10.00-11.01	■	
2.8 HDI (8140.43S (F28DTCR))	Kg. 1400	Diesel	FWD	2798	94	128	11.00-04.02	■	
2.8 HDI (8140.43S (F28DTCR))		Diesel	FWD	2798	94	128	12.01-06.06	■	
2.8 HDi 4x4 (8140.43S (F28DTCR))		Diesel	4WD	2798	94	128	12.01-06.06	■	
2.8 HDI (8140.43N)		Diesel	FWD	2798	107	146	04.04-06.06	■	
<b>BOXER II (230L) 03.94-08.06</b>							<b>Van (LCVs-N1 Segment)</b>		
2.0 4x4 (RFW (XU10J2))	Kg. 1400	Gasolina	4WD	1998	80	109	03.96-09.98	■	
2.0 i (RFW (XU10J2))	11/01-, -12/01, Eq.V_ 1000-1400 kg.	Gasolina	FWD	1998	80	109	06.94-04.02	■	
2.0 (RFL (XU10J2U))		Gasolina	FWD	1998	81	110	12.01-06.06	■	
1.9 D (DJY (XUD9A))		Diesel	FWD	1905	50	68	07.99-04.02	■	
1.9 D (D9B (XUD9AU))		Diesel	FWD	1905	51	69	03.94-04.02	■	
1.9 DT 4x4 (XUD9TE)	Kg. 1400	Diesel	4WD	1905	66	90	03.96-09.98	■	
1.9 TD (XUD9TE)		Diesel	FWD	1905	66	90	07.99-04.02	■	
1.9 TD (D8C (XUD9UTF))		Diesel	FWD	1905	68	92	03.94-04.02	■	
2.0 HDi (RHV (DW10UTD))	Eq.V_ 1000-1400 kg.	Diesel	FWD	1997	62	84	08.01-04.02	■	
2.0 HDi (RHV (DW10TD))		Diesel	FWD	1997	62	84	04.02-06.06	■	
2.0 HDi (RHV (DW10UTD))		Diesel	FWD	1997	62	84	04.02-06.06	■	
2.2 HDi (4HY (DW12UTED))		Diesel	FWD	2179	74	101	12.01-06.06	■	
2.5 D (T9A (DJ5))		Diesel	FWD	2446	63	86	03.94-04.02	■	
2.5 D 4x4 (T9A (DJ5))		Diesel	4WD	2446	63	86	07.99-04.02	■	
2.5 TD (T8A (DJ5T))		Diesel	FWD	2446	76	103	03.94-03.02	■	
2.5 TDI (THX (DJ5TED))	Eq.V_ 1000-1400 kg.	Diesel	FWD	2446	79	107	01.97-04.02	■	
2.5 TDI 4x4 (THX (DJ5TED))	Eq.V_ 1000-1400 kg.	Diesel	4WD	2446	79	107	07.99-04.02	■	
2.5 DT	Kg. 1400	Diesel	FWD	2499	62	84	10.97-11.01	■	
2.8 DTIC	Kg. 1400	Diesel	FWD	2798	90	122	10.97-08.05	■	
2.8 HDI (8140.43S (F28DTCR))	Kg. 1400	Diesel	FWD	2798	93	126	10.00-11.01	■	
2.8 HDi 4x4 (8140.43S (F28DTCR))	Kg. 1400	Diesel	4WD	2798	93	126	10.00-11.01	■	

# LISTA DE APLICACIONES - BUYERS GUIDE

2.8 HDi (8140.43S (F28DTCR))	Eq.V_ 1000-1400 kg.	Diesel	FWD	2798	94	128	11.00-04.02	■	
2.8 HDi (8140.43S (F28DTCR))		Diesel	FWD	2798	94	128	12.01-06.06	■	
2.8 HDi 4x4 (8140.43S (F28DTCR))		Diesel	4WD	2798	94	128	12.01-06.06	■	
2.8 HDi (8140.43N)		Diesel	FWD	2798	107	146	04.04-06.06	■	
<b>BOXER III / MANAGER 09.05-</b>							<b>Bus (Minibus-M2-Segment)</b>		
2.0 BlueHDi 110 (AHM (DW10FUE))	Kg. 1400	Diesel	FWD	1997	81	110	07.15-09.19	■	
2.0 BlueHDi 130 (AHN (DW10FUD))	Kg. 1400	Diesel	FWD	1997	96	130	07.15-09.19	■	
2.0 BlueHDi 160 (AHP (DW10FUC))	Kg. 1400	Diesel	FWD	1997	120	163	07.15-09.19	■	
2.2 HDi 100 (4HV (P22DTE))	Kg. 1400	Diesel	FWD	2198	74	101	04.06-	■	
2.2 HDi 120 (4HU (P22DTE))	Kg. 1400	Diesel	FWD	2198	88	120	04.06-12.16	■	
3.0 HDi 160 (F1CE0481D (F30DT))	Kg. 1400	Diesel	FWD	2999	115	156	04.06-12.15	■	
<b>BOXER III / MANAGER 04.06-</b>							<b>Platform/Chassis (LCVs-N1 Segment)</b>		
2.0 BlueHDi 110 (AHM (DW10FUE))	Kg. 1400	Diesel	FWD	1997	81	110	03.16-09.19	■	
2.0 BlueHDi 130 (AHN (DW10FUD))	Kg. 1400	Diesel	FWD	1997	96	130	03.16-09.19	■	
2.0 BlueHDi 160 (AHP (DW10FUC))	Kg. 1400	Diesel	FWD	1997	120	163	03.16-12.23	■	
2.2 HDi 100 (4HV (P22DTE))	Kg. 1400	Diesel	FWD	2198	74	101	04.06-	■	
2.2 HDi 120 (4HU (P22DTE))	Kg. 1400	Diesel	FWD	2198	88	120	04.06-12.16	■	
3.0 HDi 155 (F1CE0481D (F30DT))	Kg. 1400	Diesel	FWD	2999	115	156	04.06-12.15	■	
3.0 HDi 160 (F1CE0481D (F30DT))	Kg. 1400	Diesel	FWD	2999	116	156	04.06-12.15	■	
<b>BOXER III / MANAGER 04.06-</b>							<b>Van (LCVs-N1 Segment)</b>		
2.0 BlueHDi 110 (AHM (DW10FUE))	Kg. 1400	Diesel	FWD	1997	81	110	03.16-09.19	■	
2.0 BlueHDi 130 (AHN (DW10FUD))	Kg. 1400	Diesel	FWD	1997	96	130	03.16-09.19	■	
2.0 BlueHDi 160 (AHP (DW10FUC))	Kg. 1400	Diesel	FWD	1997	120	163	03.16-12.23	■	
2.2 HDi 100 (4HV (P22DTE))	Kg. 1400	Diesel	FWD	2198	74	101	04.06-	■	
2.2 HDi 120 (4HU (P22DTE))	Kg. 1400	Diesel	FWD	2198	88	120	04.06-12.16	■	
3.0 HDi 155 (F1CE0481D (F30DT))	Kg. 1400	Diesel	FWD	2999	115	156	07.06-12.15	■	
3.0 HDi 160 (F1CE0481D (F30DT))	Kg. 1400	Diesel	FWD	2999	116	156	04.06-12.15	■	