

LISTA DE APLICACIONES - BUYERS GUIDE

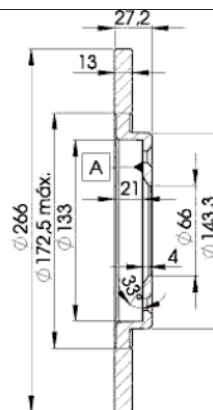
78BD4692-2



8 424073 146199

Weight: 8.772

O.E.M.	MAKE
16 188 903 80	CITROËN
4246.R1	CITROËN
4246.R2	PEUGEOT
4246.R4	CITROËN
4249.82	CITROËN



78BD4692-2

E1 90R-02C0415/0009



Ø266x13x27

MAKE
CITROËN
PEUGEOT



Trac.	CC	Kw	CV		
					Front / Rear

CITROËN

BERLINGO / BERLINGO FIRST (M_) 07.96-12.11

Box Body/MPV (LCVs-N1 Segment)

1.1 i (MAHDZ, MBHDZ, MBHFX) (HDZ (TU1M))	-09/02, vehicles without ABS	Gasolina	FWD	1124	44	60	07.96-03.08	■
1.1 i (MAHDZ, MBHDZ, MBHFX) (HFX (TU1JP))	-09/02, vehicles without ABS	Gasolina	FWD	1124	44	60	07.96-03.08	■
1.4 i (MBKFX, MBKFW) (KFW (TU3A))	-09/02, vehicles without ABS	Gasolina	FWD	1360	55	75	07.96-12.11	■
1.4 i (MBKFX, MBKFW) (KFW (TU3JP))	-09/02, vehicles without ABS	Gasolina	FWD	1360	55	75	07.96-12.11	■
1.4 i (MBKFX, MBKFW) (KFX (TU3JP))	-09/02, vehicles without ABS	Gasolina	FWD	1360	55	75	07.96-12.11	■
1.4 i (KFW (TU3JP))		Gasolina	FWD	1360	57	77	08.99-05.08	■
1.4 i (KFX (TU3JP))		Gasolina	FWD	1360	57	77	08.99-05.08	■
1.6 16V (MBNFU) (NFU (TU5JP4))	-09/02, vehicles without ABS	Gasolina	FWD	1587	80	109	10.00-03.08	■
1.4 BiFuel (MBKFXB, MCKFXB) (KFW (TU3JP))		Gasol./G as (LPG)	FWD	1360	55	75	07.96-10.02	■
1.8 D (MBA9A, MCA9A) (A9A (XUD7))	-09/02, vehicles without ABS	Diesel	FWD	1769	43	59	07.96-10.02	■
1.9 D 70 (MBWJZ, MCWJZ) (WJY (DW8B))	-09/02, vehicles without ABS	Diesel	FWD	1868	51	69	04.99-12.11	■
1.9 D 70 (MBWJZ, MCWJZ) (WJZ (DW8))	-09/02, vehicles without ABS	Diesel	FWD	1868	51	69	04.99-12.11	■
1.9 D 70 4WD (MBWJZ, MCWJZ) (WJY (DW8B))	-09/02, vehicles without ABS	Diesel	4WD	1868	51	69	07.98-03.06	■
1.9 D 70 4WD (MBWJZ, MCWJZ) (WJZ (DW8))	-09/02, vehicles without ABS	Diesel	4WD	1868	51	69	07.98-03.06	■
1.9 D (MBDJY) (DJY (XUD9A))	-09/02, vehicles without ABS	Diesel	FWD	1905	51	70	07.96-12.03	■
2.0 HDI 90 (MBRHY, MCRHY) (RHY (DW10TD))	-09/02, vehicles without ABS	Diesel	FWD	1997	66	90	12.99-12.11	■
2.0 HDI 90 4WD (MBRHY, MCRHY) (RHY (DW10TD))	-09/02, vehicles without ABS	Diesel	4WD	1997	66	90	11.00-10.05	■

BERLINGO / BERLINGO FIRST (MF_, GJK_, GFK_) 07.96-12.11

MPV (Large MPV-M1 Segment)

1.1 i (MFHDZ, MFHFX) (HDZ (TU1M))	-09/02, vehicles without ABS	Gasolina	FWD	1124	44	60	07.96-05.08	■
1.1 i (MFHDZ, MFHFX) (HFX (TU1JP))	-09/02, vehicles without ABS	Gasolina	FWD	1124	44	60	07.96-05.08	■

LISTA DE APLICACIONES - BUYERS GUIDE

1.4 i (MFKFX, MFKFW, GJKFWB, GJKFWC, GFKFWC) (KFW (TU3JP))	-09/02, vehicles without ABS	Gasolina	FWD	1360	55	75	07.96-12.11	■
1.4 i (MFKFX, MFKFW, GJKFWB, GJKFWC, GFKFWC) (KFX (TU3JP))	-09/02, vehicles without ABS	Gasolina	FWD	1360	55	75	07.96-12.11	■
1.6 16V (MFNFU) (NFU (TU5JP4))	-09/02, vehicles without ABS	Gasolina	FWD	1587	80	109	10.00-12.11	■
1.8 i (MFLFX) (LFX (XU7JB))	-09/02, vehicles without ABS	Gasolina	FWD	1761	66	90	05.97-10.02	■
1.8 i 4WD (MFLFX) (LFX (XU7JB))	vehicles without ABS	Gasolina	4WD	1761	66	90	04.97-10.01	■
electrique	-09/02, vehicles without ABS	Eléctrico	FWD		16	22	01.00-10.02	■
1.8 D (MFA9A) (A9A (XUD7))	-09/02, vehicles without ABS	Diesel	FWD	1769	43	58	07.98-10.02	■
1.8 D	vehicles without ABS	Diesel	RWD	1769	44	60	11.96-10.99	■
1.9 D (MFWJZ) (WJY (DW8B))	-09/02, vehicles without ABS	Diesel	FWD	1868	51	70	07.98-10.05	■
1.9 D (MFWJZ) (WJZ (DW8))	-09/02, vehicles without ABS	Diesel	FWD	1868	51	70	07.98-10.05	■
1.9 D 4WD (MFWJZ) (WJY (DW8B))	-09/02, vehicles without ABS	Diesel	4WD	1868	51	69	07.98-10.05	■
1.9 D 4WD (MFWJZ) (WJZ (DW8))	-09/02, vehicles without ABS	Diesel	4WD	1868	51	69	07.98-10.05	■
1.9 D (MFDJY) (D9B (XUD9A/L))	-09/02, vehicles without ABS	Diesel	FWD	1905	50	68	07.96-12.03	■
1.9 D (MFDJY) (DJY (XUD9A))	-09/02, vehicles without ABS	Diesel	FWD	1905	50	68	07.96-12.03	■
1.9 D		Diesel	RWD	1905	51	69	07.96-10.99	■
2.0 HDI 90 (MFRHY) (RHY (DW10TD))	-09/02, vehicles without ABS	Diesel	FWD	1997	66	90	12.99-10.05	■
C2 (JM_) 07.03-09.17					Hatchback (Supermini car-B Segment)			
1.1 (HFX (TU1A))		Gasolina	FWD	1124	44	60	09.03-09.12	■
1.1 (HFX (TU1JP))		Gasolina	FWD	1124	44	60	09.03-09.12	■
1.4 (KFV (TU3A))		Gasolina	FWD	1360	54	73	09.03-12.09	■
1.4 (KFV (TU3JP))		Gasolina	FWD	1360	54	73	09.03-12.09	■
1.4 (KFV (TU3JP))		Gasolina	FWD	1360	55	75	10.06-12.09	■
1.4 16V (KFU (ET3J4))		Gasolina	FWD	1360	65	90	04.05-12.09	■
1.4 HDi (8HX (DV4TD))		Diesel	FWD	1398	50	68	07.03-12.09	■
1.4 HDi (8HZ (DV4TD))		Diesel	FWD	1398	50	68	07.03-12.09	■
1.4 HDi (8HX (DV4TD))		Diesel	FWD	1398	51	69	09.03-04.05	■
1.6 HDi (9HZ (DV6TED4))		Diesel	FWD	1560	80	109	09.05-12.09	■
C2 II ENTERPRISE (JG_) 11.03-					Hatchback Van (LCVs-N1 Segment)			
1.1 (HFX (TU1A))		Gasolina	FWD	1124	44	60	11.03-12.09	■
1.1 (HFX (TU1JP))		Gasolina	FWD	1124	44	60	11.03-12.09	■
1.4 HDi (8HX (DV4TD))		Diesel	FWD	1398	50	68	09.06-12.09	■
1.4 HDi (8HZ (DV4TD))		Diesel	FWD	1398	51	69	11.03-04.05	■
C3 (FC_, FN_) 02.02-					Hatchback (Supermini car-B Segment)			
1.1 i (HFX (TU1A))		Gasolina	FWD	1124	44	60	02.02-12.09	■
1.1 i (HFX (TU1JP))		Gasolina	FWD	1124	44	60	02.02-12.09	■
1.4 i (KFV (TU3A))		Gasolina	FWD	1360	54	73	02.02-11.10	■
1.4 i (KFV (TU3JP))		Gasolina	FWD	1360	54	73	02.02-11.10	■
1.4		Gasolina	FWD	1360	58	79	12.05-07.12	■
1.1 LPG (HFX (TU1A))		Gasol./Gas (LPG)	FWD	1124	44	60	06.06-12.09	■
1.4 BiFuel (KFV (TU3JP))		Gasol./Gas (LPG)	FWD	1360	54	73	09.08-12.09	■
1.4 i Bivalent		Gasol./Gas (CNG)	FWD	1360	49	67	01.08-12.09	■
1.4 i Bivalent (KFV (TU3JP))		Gasol./Gas (CNG)	FWD	1360	54	73	02.02-12.09	■
1.4 Flex		Gasol./Etanol	FWD	1360	59	80	12.05-07.12	■
1.4 HDi (8HX (DV4TD))		Diesel	FWD	1398	50	68	02.02-12.09	■
1.4 HDi (8HZ (DV4TD))		Diesel	FWD	1398	50	68	02.02-12.09	■

LISTA DE APLICACIONES - BUYERS GUIDE

C3 II (SC_) 09.09-					Hatchback (Supermini car-B Segment)			
1.1 i (HFV (TU1A))		Gasolina	FWD	1124	44	60	09.09-01.13	■
1.1 i (HFX (TU1A))		Gasolina	FWD	1124	44	60	09.09-01.13	■
1.4 (K6E (TU3A))		Gasolina	FWD	1360	54	73	11.09-09.16	■
1.4 (KFT (TU3AE5))		Gasolina	FWD	1360	54	73	11.09-09.16	■
1.1 BiFuel (HFX (TU1A))		Gasol./Gas (LPG)	FWD	1124	44	60	11.10-09.16	■
C4 CACTUS 09.14-					Hatchback (Compact SUV-J Segment)			
1.2 VTi 75 / PureTech 75 (HMu (EB2D))		Gasolina	FWD	1199	55	75	09.14-	■
1.2 VTi 75 / PureTech 75 (HMu (EB2FD))		Gasolina	FWD	1199	55	75	09.14-	■
1.2 VTi 82 (HmZ (EB2F))		Gasolina	FWD	1199	60	82	09.14-	■
1.2 THP 110 (HNP (EB2ADT))		Gasolina	FWD	1199	81	110	09.14-	■
1.2 THP 110 (HNV (EB2DTM))		Gasolina	FWD	1199	81	110	09.14-	■
1.2 THP 110 (HNZ (EB2DT))		Gasolina	FWD	1199	81	110	09.14-	■
1.2 PureTech 130 (HNS (EB2ADTS))		Gasolina	FWD	1199	96	131	11.17-	■
1.2 PureTech 130 (HNY (EB2DTS))		Gasolina	FWD	1199	96	131	11.17-	■
1.6 HDi 90 (9HJ (DV6DTEdM))		Diesel	FWD	1560	68	92	09.14-	■
1.6 HDi 90 (9HP (DV6D))		Diesel	FWD	1560	68	92	09.14-	■
1.6 HDi 90 (9HP (DV6DTEd))		Diesel	FWD	1560	68	92	09.14-	■
1.6 BlueHDi 100 (BHY (DV6FD))		Diesel	FWD	1560	73	99	09.14-	■
C-ELYSEE II (DD_) 11.12-					Saloon (Compact car-C Segment)			
1.2 VTi 72 (DDHMY0) (HMY (EB2M))		Gasolina	FWD	1199	53	72	11.12-01.17	■
1.2 VTi 82 (HmZ (EB2))		Gasolina	FWD	1199	60	82	12.14-	■
1.2 VTi 82 (HmZ (EB2F))		Gasolina	FWD	1199	60	82	12.14-	■
1.2 PureTech 82 (DDHMRP) (HMR (EB2FA))		Gasolina	FWD	1199	61	83	02.18-	■
1.6 VTi 115 (DDNFP0, DDNFP6, DDNFP9) (NFP (EC5))		Gasolina	FWD	1587	85	115	11.12-	■
1.6 HDi 92 (9HJ (DV6DTEdM))		Diesel	FWD	1560	68	92	11.12-	■
1.6 HDi 92 (9HP (DV6DTEd))		Diesel	FWD	1560	68	92	11.12-	■
1.6 BlueHDi 100 (BHY (DV6FD))		Diesel	FWD	1560	73	99	11.14-	■
PEUGEOT								
301 11.12-					Saloon (Compact car-C Segment)			
1.2 VTi 72 (HMY (EB2M))		Gasolina	FWD	1199	53	72	11.12-	■
1.2 VTi 82 (HmZ (EB2F))		Gasolina	FWD	1199	60	82	12.14-	■
1.2 PureTech 82 (HMR (EB2FA))		Gasolina	FWD	1199	61	83	02.18-	■
1.6 VTi 115 (NFP (EC5))		Gasolina	FWD	1587	85	115	11.12-10.17	■
1.6 LPG (NFP (EC5))		Gasol./Gas (LPG)	FWD	1587	85	116	07.14-	■
1.5 BlueHDi 100 (YHY (DV5RD))		Diesel	FWD	1499	75	102	05.18-	■
1.6 HDi 90 (9HF (DV6DTEd))		Diesel	FWD	1560	68	92	11.12-	■
1.6 HDi 90 (9HJ (DV6DTEdM))		Diesel	FWD	1560	68	92	11.12-	■
1.6 BlueHDi 100 (BHY (DV6FD))		Diesel	FWD	1560	73	99	04.14-	■
PARTNER (5_, G_) 03.97-07.08					Platform/Chassis (LCVs-N1 Segment)			
1.6		Gasolina	FWD	1587	80	109	09.00-05.08	■
1.8		Gasolina	FWD	1761	66	90	03.97-08.00	■
1.9 D (WJY (DW8B))		Diesel	FWD	1868	51	69	01.99-07.08	■
1.9 D (WJZ (DW8))		Diesel	FWD	1868	51	69	01.99-07.08	■
2.0 HDi		Diesel	FWD	1997	66	90	11.02-07.08	■
PARTNER / GRAND RAID / RANCH (5_, G_) 05.96-12.15					MPV (Compact MPV-M1 Segment)			
1.1 (HDZ (TU1M))	-09/02, vehicles without ABS	Gasolina	FWD	1124	44	60	06.96-10.02	■

LISTA DE APLICACIONES - BUYERS GUIDE

1.1 (HFX (TU1JP))	-09/02, vehicles without ABS	Gasolina	FWD	1124	44	60	06.96-10.02	■
1.4 (KFW (TU3A))	-09/02, vehicles without ABS	Gasolina	FWD	1360	55	75	06.96-12.15	■
1.4 (KFW (TU3JP))	-09/02, vehicles without ABS	Gasolina	FWD	1360	55	75	06.96-12.15	■
1.4 (KFX (TU3JP))	-09/02, vehicles without ABS	Gasolina	FWD	1360	55	75	06.96-12.15	■
1.6 16V (NFU (TU5JP4))	-12/02	Gasolina	FWD	1587	80	109	07.01-03.08	■
1.8 (LFX (XU7JB))	-09/02, vehicles without ABS	Gasolina	FWD	1761	66	90	05.97-12.02	■
1.6 Flexfuel (NFU (TU5JP4))		Gasol./Etanol	FWD	1587	80	109	09.00-10.02	■
Electric	vehicles without ABS	Eléctrico	FWD		28	38	01.98-12.01	■
1.6 HDI 92 (9HJ (DV6DTEDM))		Diesel	FWD	1560	68	92	11.09-12.10	■
1.6 HDI 92 (9HP (DV6DTED))		Diesel	FWD	1560	68	92	11.09-12.10	■
1.9 D (WJY (DW8B))	-09/02, vehicles without ABS	Diesel	FWD	1868	51	69	01.99-07.08	■
1.9 D (WJZ (DW8))	-09/02, vehicles without ABS	Diesel	FWD	1868	51	69	01.99-07.08	■
1.9 D (DJY (XUD9A))	-09/02, vehicles without ABS	Diesel	FWD	1905	50	68	06.96-12.02	■
1.9 D (XUD9)	vehicles without ABS	Diesel	FWD	1905	51	69	05.96-12.98	■
2.0 HDi (RHY (DW10TD))	-09/02, vehicles without ABS	Diesel	FWD	1997	66	90	02.00-07.08	■
PARTNER / RANCH (5_, G_) 06.96-12.15					Box Body/MPV (LCVs-N1 Segment)			
1.1 (HDZ (TU1M))	-09/02, vehicles without ABS	Gasolina	FWD	1124	44	60	06.96-09.05	■
1.4		Gasolina	FWD	1360	48	65	10.05-12.10	■
1.4 (KFW (TU3A))	-09/02, vehicles without ABS	Gasolina	FWD	1360	55	75	06.96-12.15	■
1.4 (KFX (TU3JP))	-09/02, vehicles without ABS	Gasolina	FWD	1360	55	75	06.96-12.15	■
1.4 (TU32)	-09/02, vehicles without ABS	Gasolina	FWD	1360	55	75	06.96-12.15	■
1.6 (NFU (TU5JP4))	vehicles without ABS	Gasolina	FWD	1587	80	109	09.00-10.02	■
1.8 (LFX (XU7JB))	vehicles without ABS	Gasolina	FWD	1761	66	90	03.97-08.00	■
1.4 BiFuel		Gasol./Gas (LPG)	FWD	1360	55	75	04.03-10.06	■
1.6 BioFlex (NFU (TU5JP4))		Gasol./Etanol	FWD	1587	80	109	09.00-10.02	■
Electric (ELSA18)		Eléctrico	FWD		25	34	06.96-12.02	■
1.6 HDi 75 (9HK (DV6ETEDM))		Diesel	FWD	1560	55	75	08.05-07.08	■
1.6 HDI 92 (9HJ (DV6DTEDM))		Diesel	FWD	1560	68	92	11.09-12.10	■
1.6 HDI 92 (9HP (DV6DTED))		Diesel	FWD	1560	68	92	11.09-12.10	■
1.8 D (A9A (XUD7))	-09/02, vehicles without ABS	Diesel	FWD	1769	43	58	06.96-12.02	■
1.8 D (A9A (XUD7))	vehicles without ABS	Diesel	FWD	1769	44	60	11.96-02.98	■
1.9 D (WJY (DW8B))	-09/02, vehicles without ABS	Diesel	FWD	1868	51	69	06.96-12.15	■
1.9 D (WJZ (DW8))	-09/02, vehicles without ABS	Diesel	FWD	1868	51	69	06.96-12.15	■
1.9 D (DJY (XUD9A))	vehicles without ABS	Diesel	FWD	1905	50	68	06.96-12.98	■
1.9 D (DJY (XUD9A))	-09/02, vehicles without ABS	Diesel	FWD	1905	51	69	06.96-12.02	■
2.0 HDi (RHY (DW10TD))	-09/02, vehicles without ABS	Diesel	FWD	1997	66	90	04.00-07.08	■