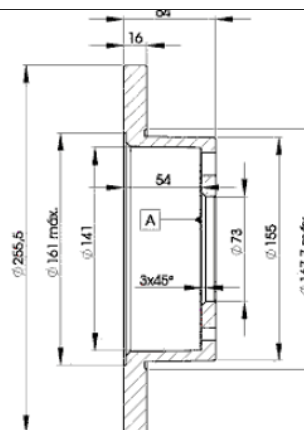
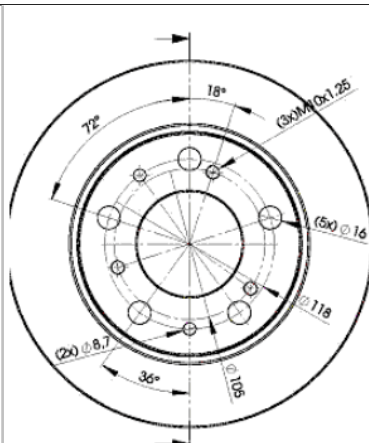


LISTA DE APLICACIONES - BUYERS GUIDE

78BD4693-2



Weight: 11.990



78BD4693-2

E1 90R-02C0100/1488



Ø256x16x64

MAKE

ALFA ROMEO

AUVERLAND

CITROËN

FIAT

PEUGEOT

TALBOT



Trac.	CC	Kw	CV
-------	----	----	----



Front / Rear

ALFA ROMEO

AR 6 (280_) 04.85-12.89

1.9 D (280) (160 D100)	ch- 154462	Diesel	FWD	1929	51	69	04.85-12.89	■
------------------------	------------	--------	-----	------	----	----	-------------	---

Bus (Minibus-M2-Segment)

AR 6 (280_) 04.85-12.89

1.9 D (280) (160 D100)	ch- 154462	Diesel	FWD	1929	51	69	04.85-12.89	■
2.4 D (280) (8144.61.200)	ch- 154462-	Diesel	FWD	2445	53	72	04.85-02.86	■
2.4 TD (280) (8144.21.220)	ch- 154462	Diesel	FWD	2445	68	92	09.86-12.89	■
2.5 D (280) (8144.67.220)	ch- 154462	Diesel	FWD	2499	55	75	03.86-12.89	■

Van (LCVs-N1 Segment)

AUVERLAND

A3 07.87-12.11

1.9 D	Diesel	RWD	1905	47	64	07.87-07.96	■
1.9 D 4WD	Diesel	4WD	1905	47	64	07.87-07.96	■

Open Off-Road Vehicle (Off-Road SUV-J Segment)

CITROËN

C25 (280_, 290_) 07.81-02.94

1.8 (169 (XM7T))	Gasolina	FWD	1796	50	68	11.81-01.94	■
1.8 E (169 (XM7T))	Gasolina	FWD	1796	51	69	07.87-02.94	■
2.0 E (170A (XN1T))	Gasolina	FWD	1971	58	79	09.81-02.94	■
2.0 E (170B (XN1T))	Gasolina	FWD	1971	58	79	09.81-02.94	■
2.0 (170C (XN1T))	Gasolina	FWD	1971	62	84	02.91-02.94	■
1.9 D (D9B (XUD9A/U))	Diesel	FWD	1905	51	69	07.87-02.94	■
1.9 TD (M705)	Diesel	FWD	1930	60	82	04.92-02.94	■
2.5 D (CRD93L (U25/661))	Diesel	FWD	2498	54	73	10.85-02.94	■
2.5 D 4x4 (CRD93L (U25/661))	Diesel	4WD	2498	54	73	01.87-02.94	■

Bus (Minibus-M2-Segment)

LISTA DE APLICACIONES - BUYERS GUIDE

2.5 D (CRD93L (U25/661))		Diesel	FWD	2498	55	75	11.81-01.94	■
C25 (280_, 290_) 07.81-03.94					Platform/Chassis (LCVs-N1 Segment)			
1.8		Gasolina	FWD	1796	50	68	07.83-01.94	■
1.8 E (169 (XM7T))		Gasolina	FWD	1796	51	69	07.87-02.94	■
2.0 (170A (XN1T))		Gasolina	FWD	1971	57	78	11.81-12.86	■
2.0 (170C (XN1T))		Gasolina	FWD	1971	62	84	01.87-03.94	■
1.9		Diesel	RWD	1905	51	69	01.88-01.94	■
1.9 DT (M705)		Diesel	FWD	1929	60	82	10.91-01.94	■
2.5 D (CRD93L (U25/661))		Diesel	FWD	2498	55	75	11.83-01.94	■
C25 (280_, 290_) 07.81-07.94					Van (LCVs-N1 Segment)			
1.8 (169 (XM7T))		Gasolina	FWD	1796	50	68	11.81-01.94	■
2.0 (170A (XN1T))	08/84-	Gasolina	FWD	1971	57	78	11.81-12.86	■
2.0 (170B (XN1T))	08/84-	Gasolina	FWD	1971	57	78	11.81-12.86	■
2.0 E (170A (XN1T))		Gasolina	FWD	1971	58	79	09.81-03.94	■
2.0 E (170B (XN1T))		Gasolina	FWD	1971	58	79	09.81-03.94	■
2.0 (170C (XN1T))		Gasolina	FWD	1971	62	84	02.91-03.94	■
2.0 4x4 (170C (XN1T))		Gasolina	4WD	1971	62	84	01.90-01.94	■
1.9 D		Diesel	RWD	1905	51	69	01.88-01.94	■
1.9 D 1400 (DJY (XUD9A))		Diesel	FWD	1905	51	69	01.88-01.94	■
1.9 DT		Diesel	RWD	1929	60	82	10.91-01.94	■
2.5 D (CRD93L (U25/661))		Diesel	FWD	2498	54	73	02.85-07.94	■
2.5 D (CRD93L (U25/661))		Diesel	FWD	2498	55	75	11.81-01.94	■
2.5 D 4x4 (CRD93L (U25/661))		Diesel	4WD	2498	55	75	11.83-12.86	■
FIAT								
DUCATO (280_) 07.82-08.90					Bus (Minibus-M2-Segment)			
1.8 (XM7T)		Gasolina	FWD	1796	51	69	07.82-12.88	■
2.0 (170 B)		Gasolina	FWD	1971	55	75	01.86-08.90	■
2.0 (XN 1T)		Gasolina	FWD	1971	58	79	07.82-05.85	■
2.0 (170 D)		Gasolina	FWD	1971	62	84	09.88-08.90	■
2.0 (170 D)		Gasolina	FWD	1971	62	84	07.90-03.94	■
2.0		Gasolina	FWD	1971	63	86	06.90-05.94	■
2.0 4x4 (170 D)		Gasolina	4WD	1971	63	86	06.90-05.94	■
1.9 D (149 B1.000)		Diesel	FWD	1929	52	71	02.87-08.90	■
1.9 D (149 B1.000)		Diesel	FWD	1929	52	71	07.90-03.94	■
1.9 TD (280 A1.000)		Diesel	FWD	1929	60	82	03.89-08.90	■
1.9 TD (280 A1.000)		Diesel	FWD	1929	60	82	07.90-03.94	■
2.4 D (8144.61)		Diesel	FWD	2445	53	72	07.82-12.85	■
2.5 TD (8144.21)		Diesel	FWD	2445	68	92	01.87-08.90	■
2.5 TD (8144.21.220)		Diesel	FWD	2445	68	92	01.87-08.90	■
2.5 TD 4x4 (8144.21)		Diesel	4WD	2445	68	92	01.86-08.90	■
2.5 D (8144.67)		Diesel	FWD	2500	55	75	01.86-08.90	■
2.5 D (CRD93L (U25-661))		Diesel	FWD	2500	55	75	01.86-08.90	■
2.5 D (8144.67)	Eq.V_ 1000-1400 kg.	Diesel	FWD	2500	55	75	07.90-03.94	■
2.5 D 4x4 (8144.67)		Diesel	4WD	2500	55	75	01.87-08.90	■
2.5 D 4x4 (8144.67)	Eq.V_ 1000-1400 kg.	Diesel	4WD	2500	55	75	07.90-03.94	■
DUCATO (280_) 07.82-08.90					Platform/Chassis (LCVs-N1 Segment)			
2.0 (170 B)		Gasolina	FWD	1971	55	75	07.85-08.90	■
2.0 (XN 1T)		Gasolina	FWD	1971	55	75	07.85-08.90	■
2.0 (170 D)		Gasolina	FWD	1971	62	84	08.88-08.90	■

LISTA DE APLICACIONES - BUYERS GUIDE

2.0 (170 D)		Gasolina	FWD	1971	62	84	07.90-03.94	■
2.0 4x4 (170 D)		Gasolina	4WD	1971	63	86	06.90-05.94	■
1.9 D (149 B1.000)		Diesel	FWD	1929	51	69	06.90-05.94	■
1.9 D (149 B1.000)		Diesel	FWD	1929	52	71	01.88-08.90	■
1.9 TD (280 A1.000)		Diesel	FWD	1929	60	82	03.89-08.90	■
1.9 TD (280 A1.000)		Diesel	FWD	1929	60	82	03.89-03.94	■
2.5 TD (8144.21)		Diesel	FWD	2445	68	92	01.86-08.90	■
2.5 TD		Diesel	RWD	2499	68	92	09.86-05.90	■
2.5 D (8144.67)		Diesel	FWD	2500	55	75	07.82-08.90	■
2.5 D (CRD93L (U25-661))		Diesel	FWD	2500	55	75	07.82-08.90	■
2.5 D (8144.67)	Eq.V_ 1400-1800 kg.	Diesel	FWD	2500	55	75	03.89-03.94	■
2.5 D 4x4 (8144.67)		Diesel	4WD	2500	55	75	03.89-08.90	■
2.5 D 4x4 (8144.67)	Eq.V_ 1400-1800 kg.	Diesel	4WD	2500	55	75	07.90-03.94	■
DUCATO (280_) 01.82-02.91					Van (LCVs-N1 Segment)			
1.8 (169 B)		Gasolina	FWD	1796	49	67	01.82-10.88	■
1.8 (XM7T)		Gasolina	FWD	1796	51	69	07.82-12.88	■
2.0 (170 B)		Gasolina	FWD	1971	55	75	07.85-08.90	■
2.0 (XN 1T)		Gasolina	FWD	1971	58	79	01.82-08.90	■
2.0 (170 D)		Gasolina	FWD	1971	62	84	03.89-08.90	■
2.0 (170 D)		Gasolina	FWD	1971	63	86	06.90-05.94	■
1.9 D (149 B1.000)		Diesel	FWD	1929	52	71	01.88-08.90	■
1.9 D (149 B1.000)		Diesel	FWD	1929	52	71	07.90-03.94	■
1.9 TD (280 A1.000)		Diesel	FWD	1929	60	82	03.89-08.90	■
1.9 TD (280 A1.000)		Diesel	FWD	1929	60	82	03.89-03.94	■
2.4 D (8144.61)		Diesel	FWD	2445	53	72	01.82-08.90	■
2.5 D (8140.61)		Diesel	FWD	2445	55	75	09.86-05.90	■
2.5 TD 4x4 (8144.21)		Diesel	4WD	2445	68	92	09.86-09.90	■
2.5 D (8144.67)	Eq.V_ 1000-1400 kg.	Diesel	FWD	2499	55	75	06.90-05.94	■
2.5 TD		Diesel	FWD	2499	68	92	09.86-05.90	■
2.5 TD		Diesel	RWD	2499	70	95	09.86-05.90	■
2.5 D (8144.67)		Diesel	FWD	2500	55	75	01.82-08.90	■
2.5 D (CRD93L (U25-661))		Diesel	FWD	2500	55	75	01.82-08.90	■
2.5 D 4x4 (8144.67)		Diesel	4WD	2500	55	75	03.89-08.90	■
2.5 D 4x4 (8144.67)	Eq.V_ 1000-1400 kg.	Diesel	4WD	2500	55	75	07.90-03.94	■
TALENTO (290_) 03.89-03.94					Bus (Minibus-M2-Segment)			
2.0 (290UEH4) (170 B)		Gasolina	FWD	1971	55	75	03.89-03.94	■
1.9 D (290UEHK) (149 B1.000)		Diesel	FWD	1929	52	71	03.89-03.94	■
TALENTO (290_) 03.89-03.94					Platform/Chassis (LCVs-N1 Segment)			
2.0 (290UA4) (170 B)		Gasolina	FWD	1971	55	75	03.89-03.94	■
1.9 D (290UAK, 290UTK) (149 B1.000)		Diesel	FWD	1929	52	71	03.89-03.94	■
TALENTO (290_) 03.89-03.94					Van (LCVs-N1 Segment)			
2.0 (290U4) (170 B)		Gasolina	FWD	1971	55	75	03.89-03.94	■
1.9 D (290UK) (149 B1.000)		Diesel	FWD	1929	52	71	03.89-03.94	■
PEUGEOT								
J5 (280P) 09.81-09.90					Bus (Minibus-M2-Segment)			
2.0 (170B (XN1T))	Notkg 1800	Gasolina	FWD	1971	55	75	09.81-09.90	■
2.0 (170 (XN1T))	Notkg 1800	Gasolina	FWD	1971	58	79	01.83-09.90	■
2.0 Super 4x4 (XN1P)	Notkg 1800	Gasolina	4WD	1971	58	79	09.81-08.90	■
2.0 (170D (XN1TACP))	Notkg 1800	Gasolina	FWD	1971	62	84	10.90-02.94	■

LISTA DE APLICACIONES - BUYERS GUIDE

1.9 D (D9B (XUD9A))	Notkg 1800	Diesel	FWD	1905	51	70	10.90-02.94	■
2.5 D (CRD93 (PSA))	Notkg 1800	Diesel	FWD	2498	54	73	09.81-09.90	■
2.5 DT (CRD93L)		Diesel	FWD	2498	70	95	01.86-08.90	■
2.5 TD (CRD93LS (U25/673))	Notkg 1800	Diesel	FWD	2498	70	95	10.90-02.94	■
2.5 D (CRD93 (PSA))	Notkg 1800	Diesel	FWD	2500	54	73	10.90-02.94	■
2.5 D 4x4 (CRD93 (PSA))	Notkg 1800	Diesel	4WD	2500	54	73	10.90-02.94	■
2.5 TD 4x4 (CRD93LS (U25/673))	Notkg 1800	Diesel	4WD	2500	70	95	10.90-02.94	■
J5 (280L) 09.81-09.90					Platform/Chassis (LCVs-N1 Segment)			
1.8 (169B (XM7T))	Notkg 1800	Gasolina	FWD	1796	51	69	09.81-08.90	■
1.8	Notkg 1800	Gasolina	FWD	1796	51	69	09.90-01.94	■
2.0 (170B (XN1T))	Notkg 1800	Gasolina	FWD	1971	55	75	01.86-11.88	■
2.0 (170 (XN1T))	Notkg 1800	Gasolina	FWD	1971	58	79	01.83-11.88	■
2.0 (170D (XN1TACP))	Notkg 1800	Gasolina	FWD	1971	62	84	10.90-02.94	■
2.0 (XN1TA)	Notkg 1800	Gasolina	FWD	1971	69	94	09.90-01.94	■
1.9 D	Notkg 1800	Diesel	RWD	1905	51	69	09.87-08.90	■
1.9 D (D9B (XUD9A))	Notkg 1800	Diesel	FWD	1905	51	70	10.90-02.94	■
2.5 D 4x4 (CRD93)	Notkg 1800	Diesel	4WD	2498	54	73	09.81-08.90	■
2.5 DT (CRD93L)	Notkg 1800	Diesel	FWD	2498	70	95	09.81-08.90	■
2.5 DT	Notkg 1800	Diesel	RWD	2498	70	95	09.81-08.90	■
2.5 D (CRD93 (PSA))	Notkg 1800	Diesel	FWD	2500	54	73	09.81-09.90	■
2.5 D (CRD93 (PSA))	Notkg 1800	Diesel	FWD	2500	54	73	10.90-02.94	■
2.5 D 4x4 (CRD93 (PSA))	Notkg 1800	Diesel	4WD	2500	54	73	10.90-02.94	■
2.5 TD (CRD93LS (U25/673))	Notkg 1800	Diesel	FWD	2500	70	95	10.90-02.94	■
2.5 TD 4x4 (CRD93LS (U25/673))	Notkg 1800	Diesel	4WD	2500	70	95	10.90-02.94	■
J5 (280L) 09.81-09.90					Van (LCVs-N1 Segment)			
1.8 (169B (XM7T))	Notkg 1800	Gasolina	FWD	1796	51	69	01.83-11.88	■
1.8 (169B (XM7T))	Notkg 1800	Gasolina	FWD	1796	51	69	09.90-01.94	■
2.0 (XN1T)	Notkg 1800	Gasolina	FWD	1971	55	75	09.87-08.90	■
2.0 (XN1P)	Notkg 1800	Gasolina	FWD	1971	58	79	09.81-08.90	■
2.0 (170D (XN1TACP))	Notkg 1800	Gasolina	FWD	1971	62	84	09.90-01.94	■
2.0 (XN1TA)	Notkg 1800	Gasolina	FWD	1971	62	84	09.90-01.94	■
2.0	Notkg 1800	Gasolina	FWD	1971	69	94	09.90-01.94	■
1.9 D (D9B (XUD9A))	Notkg 1800	Diesel	FWD	1905	51	69	09.87-08.90	■
1.9 D (XUD9)	Notkg 1800	Diesel	FWD	1905	51	69	09.87-08.90	■
1.9 D (D9B (XUD9A))	Notkg 1800	Diesel	FWD	1905	51	70	10.90-03.94	■
2.5 D (CRD93)	Notkg 1800	Diesel	FWD	2498	54	73	09.81-08.90	■
2.5 D	Notkg 1800	Diesel	RWD	2498	54	73	09.81-08.90	■
2.5 D (CRD93)	Notkg 1800	Diesel	FWD	2498	54	73	09.90-01.94	■
2.5 DT (CRD93L)	Notkg 1800	Diesel	FWD	2498	70	95	09.81-08.90	■
2.5 DT (CRD93LS (U25/673))	Notkg 1800	Diesel	FWD	2498	70	95	09.81-08.90	■
2.5 DT (CRD93L)	Notkg 1800	Diesel	FWD	2498	70	95	09.90-01.94	■
2.5 DT A las 4 ruedas (CRD93L)	Notkg 1800	Diesel	4WD	2498	70	95	09.81-08.90	■
2.5 D 4x4 (CRD93 (PSA))	Notkg 1800	Diesel	4WD	2500	54	73	10.90-03.94	■
2.5 TD 4x4 (CRD93LS (U25/673))	Notkg 1800	Diesel	4WD	2500	70	95	10.90-03.94	■
TALBOT								
EXPRESS 1000 -1500 07.82-10.94					Bus (Minibus-M2-Segment)			
1.8 (XM7T)		Gasolina	FWD	1796	51	69	07.83-10.90	■
2.0 (XN1TA)		Gasolina	FWD	1971	57	78	07.82-10.90	■
1.9 D (XUD9A)		Diesel	FWD	1905	51	69	07.87-10.90	■
2.5 D (CRD93)		Diesel	FWD	2498	54	73	07.82-10.94	■

LISTA DE APLICACIONES - BUYERS GUIDE

EXPRESS 1000 -1500 07.82-10.94					Platform/Chassis (LCVs-N1 Segment)			
2.0 (XN1TA)	Gasolina	FWD	1971	57	78	07.82-10.94	■	
2.5 D (CRD93)	Diesel	FWD	2498	54	73	07.82-10.94	■	
2.5 D A las 4 ruedas (CRD93)	Diesel	4WD	2498	54	73	11.88-10.94	■	
EXPRESS 1000 -1800 07.81-10.94					Van (LCVs-N1 Segment)			
1.8 (XM7T)	Gasolina	FWD	1796	51	69	07.81-10.90	■	
2.0 (XN1TA)	Gasolina	FWD	1971	57	78	07.82-10.90	■	
1.9 D (XUD9A)	Diesel	FWD	1905	51	69	07.87-10.90	■	
2.5 D (CRD93)	Diesel	FWD	2498	54	73	07.82-10.94	■	
2.5 D A las 4 ruedas (CRD93)	Diesel	4WD	2498	54	73	11.88-10.94	■	