

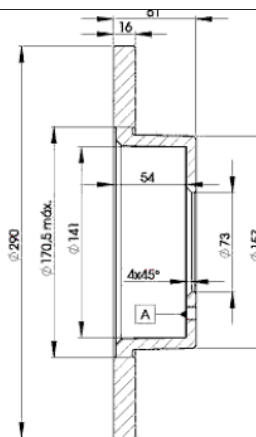
LISTA DE APLICACIONES - BUYERS GUIDE

78BD4695-2



Weight: 15.070

O.E.M.	MAKE
075 386 82	TALBOT
4246.A0	PEUGEOT
4246.H3	PEUGEOT
4246A0	AUVERLAND
7 173 963 8	FIAT
7 538 682	FIAT
75 386 82	CITROËN
9 350 052 1	FIAT
ZF 9 350 0521	CITROËN



78BD4695-2



Ø290x16x61

MAKE
AUVERLAND
CITROËN
FIAT
PEUGEOT
TALBOT



Trac.	CC	Kw	CV
-------	----	----	----



Front / Rear

AUVERLAND

A3 07.87-12.11

Closed Off-Road Vehicle (Off-Road SUV-J Segment)

1.6	Gasolina	RWD	1580	68	92	10.91-07.96	■
1.9 D	Diesel	RWD	1905	47	64	07.87-07.96	■
1.9 D 4WD	Diesel	4WD	1905	47	64	07.87-07.96	■
2.1 D	Diesel	RWD	2138	60	82	10.91-07.96	■
2.1 D 4WD	Diesel	4WD	2138	60	82	10.91-07.96	■

CITROËN

C25 (280_, 290_) 07.81-02.94

Bus (Minibus-M2-Segment)

2.5 D Turbo (CRD93LS (U25/673))	Diesel	FWD	2500	70	95	08.87-02.94	■
2.5 D Turbo 4x4 (CRD93LS (U25/673))	Diesel	4WD	2500	70	95	08.87-02.94	■

C25 (280_, 290_) 07.81-03.94

Platform/Chassis (LCVs-N1 Segment)

2.5 DT (CRD93LS (U25/673))	Diesel	FWD	2498	70	95	01.87-01.94	■
----------------------------	--------	-----	------	----	----	-------------	---

C25 (280_, 290_) 07.81-07.94

Van (LCVs-N1 Segment)

2.5 D (CRD93L (U25/661))	Diesel	FWD	2498	54	73	02.85-07.94	■
2.5 DT (CRD93LS (U25/673))	Diesel	FWD	2498	70	95	08.91-01.94	■
2.5 DT 4x4 (CRD93LS (U25/673))	Diesel	4WD	2498	70	95	08.91-01.94	■

C35 11.73-01.94

Bus (Minibus-M2-Segment)

2.0 (B20614)	Gasolina	FWD	1985	65	88	11.73-01.94	■
2.2 D (B22615)	Diesel	FWD	2175	45	61	11.73-01.80	■
2.5 D (B25637)	Diesel	FWD	2498	51	69	02.80-01.94	■

LISTA DE APLICACIONES - BUYERS GUIDE

					Platform/Chassis (LCVs-N1 Segment)			
C35 11.73-01.94								
2.0 (B20614)		Gasolina	FWD	1985	65	88	11.73-01.94	■
2.2 D (B22615)		Diesel	FWD	2175	45	61	11.73-01.80	■
2.5 D (B25637)		Diesel	FWD	2498	51	69	02.80-01.94	■
C35 11.73-01.94					Van (LCVs-N1 Segment)			
2.0 (B20614)		Gasolina	FWD	1985	65	88	11.73-01.94	■
2.2 D (B22615)		Diesel	FWD	2175	45	61	11.73-01.80	■
2.5 D (B25637)		Diesel	FWD	2498	51	69	02.80-01.94	■
FIAT								
DUCATO (280_) 07.82-08.90					Bus (Minibus-M2-Segment)			
2.4 D (8144.61)		Diesel	FWD	2445	53	72	07.82-12.85	■
2.5 D (8140.27)		Diesel	FWD	2499	68	92	09.86-05.90	■
2.5 D 4x4 (8140.27)		Diesel	4WD	2499	68	92	09.86-05.90	■
2.5 TD (8140.27)		Diesel	FWD	2499	70	95	06.90-05.94	■
2.5 TD 4x4 (8140.27)		Diesel	4WD	2499	70	95	06.90-05.94	■
2.5 D (8144.67)	Kg. 1800	Diesel	FWD	2500	55	75	07.90-03.94	■
2.5 D 4x4 (8144.67)	Kg. 1800	Diesel	4WD	2500	55	75	07.90-03.94	■
2.5 TD 4x4 (8140.27)		Diesel	4WD	2500	70	95	01.91-03.94	■
DUCATO (280_) 07.82-08.90					Platform/Chassis (LCVs-N1 Segment)			
2.5 TD 4x4 (8144.21)		Diesel	4WD	2445	68	92	01.86-08.90	■
2.5 TD (8140.27)		Diesel	FWD	2499	68	92	09.86-05.90	■
2.5 D (8144.67)	Kg. 1800	Diesel	FWD	2500	55	75	03.89-03.94	■
2.5 D 4x4 (8144.67)	Kg. 1800	Diesel	4WD	2500	55	75	07.90-03.94	■
2.5 TD (8140.27)		Diesel	FWD	2500	70	95	07.90-03.94	■
2.5 TD 4x4 (8140.27)		Diesel	4WD	2500	70	95	07.90-03.94	■
DUCATO (280_) 01.82-02.91					Van (LCVs-N1 Segment)			
1.8 (XM7T)		Gasolina	FWD	1796	51	69	07.82-12.88	■
2.4 D (8144.61)		Diesel	FWD	2445	53	72	01.82-08.90	■
2.5 D 4x4 (8140.61)		Diesel	4WD	2445	53	72	09.86-10.87	■
2.5 D (8140.61)		Diesel	FWD	2445	55	75	09.86-05.90	■
2.5 D 4x4 (8140.61)		Diesel	4WD	2445	55	75	09.86-05.90	■
2.5 D 4x4 (8144.61)		Diesel	4WD	2445	55	75	09.86-05.90	■
2.5 TD		Diesel	FWD	2445	68	92	02.87-02.91	■
2.5 D (8144.67)	Kg. 1800	Diesel	FWD	2499	55	75	06.90-05.94	■
2.5 TD		Diesel	FWD	2499	68	92	09.86-05.90	■
2.5 D 4x4 (8144.67)	Kg. 1800	Diesel	4WD	2500	55	75	07.90-03.94	■
2.5 TD (8140.27)		Diesel	FWD	2500	70	95	07.90-03.94	■
2.5 TD 4x4 (8140.27)		Diesel	4WD	2500	70	95	07.90-03.94	■
PEUGEOT								
J5 (280P) 09.81-09.90					Bus (Minibus-M2-Segment)			
2.0 (170B (XN1T))	Kg. 1800	Gasolina	FWD	1971	55	75	09.81-09.90	■
2.0 (170 (XN1T))	Kg. 1800	Gasolina	FWD	1971	58	79	01.83-09.90	■
2.0 Super 4x4 (XN1P)	Kg. 1800	Gasolina	4WD	1971	58	79	09.81-08.90	■
2.0 (170D (XN1TACP))	Kg. 1800	Gasolina	FWD	1971	62	84	10.90-02.94	■
1.9 D (D9B (XUD9A))	Kg. 1800	Diesel	FWD	1905	51	70	10.90-02.94	■
2.5 D (CRD93 (PSA))	Kg. 1800	Diesel	FWD	2498	54	73	09.81-09.90	■
2.5 DT (CRD93L)		Diesel	FWD	2498	70	95	01.86-08.90	■
2.5 TD (CRD93LS (U25/673))	Kg. 1800	Diesel	FWD	2498	70	95	10.90-02.94	■
2.5 D (CRD93 (PSA))	Kg. 1800	Diesel	FWD	2500	54	73	10.90-02.94	■

LISTA DE APLICACIONES - BUYERS GUIDE

2.5 D 4x4 (CRD93 (PSA))	Kg. 1800	Diesel	4WD	2500	54	73	10.90-02.94	■
2.5 TD 4x4 (CRD93LS (U25/673))	Kg. 1800	Diesel	4WD	2500	70	95	10.90-02.94	■
J5 (280L) 09.81-09.90					Platform/Chassis (LCVs-N1 Segment)			
1.8 (169B (XM7T))	Kg. 1800	Gasolina	FWD	1796	51	69	09.81-08.90	■
1.8	Kg. 1800	Gasolina	FWD	1796	51	69	09.90-01.94	■
2.0 (170B (XN1T))	Kg. 1800	Gasolina	FWD	1971	55	75	01.86-11.88	■
2.0 (170 (XN1T))	Kg. 1800	Gasolina	FWD	1971	58	79	01.83-11.88	■
2.0 (170D (XN1TACP))	Kg. 1800	Gasolina	FWD	1971	62	84	10.90-02.94	■
2.0 (XN1TA)	Kg. 1800	Gasolina	FWD	1971	69	94	09.90-01.94	■
1.9 D	Kg. 1800	Diesel	RWD	1905	51	69	09.87-08.90	■
1.9 D (D9B (XUD9A))	Kg. 1800	Diesel	FWD	1905	51	70	10.90-02.94	■
2.5 D 4x4 (CRD93)	Kg. 1800	Diesel	4WD	2498	54	73	09.81-08.90	■
2.5 DT (CRD93L)	Kg. 1800	Diesel	FWD	2498	70	95	09.81-08.90	■
2.5 DT	Kg. 1800	Diesel	RWD	2498	70	95	09.81-08.90	■
2.5 D (CRD93 (PSA))	Kg. 1800	Diesel	FWD	2500	54	73	09.81-09.90	■
2.5 D (CRD93 (PSA))	Kg. 1800	Diesel	FWD	2500	54	73	10.90-02.94	■
2.5 D 4x4 (CRD93 (PSA))	Kg. 1800	Diesel	4WD	2500	54	73	10.90-02.94	■
2.5 TD (CRD93LS (U25/673))	Kg. 1800	Diesel	FWD	2500	70	95	10.90-02.94	■
2.5 TD 4x4 (CRD93LS (U25/673))	Kg. 1800	Diesel	4WD	2500	70	95	10.90-02.94	■
J5 (280L) 09.81-09.90					Van (LCVs-N1 Segment)			
1.8 (169B (XM7T))	Kg. 1800	Gasolina	FWD	1796	51	69	01.83-11.88	■
1.8 (169B (XM7T))	Kg. 1800	Gasolina	FWD	1796	51	69	09.90-01.94	■
2.0 (XN1T)	Kg. 1800	Gasolina	FWD	1971	55	75	09.87-08.90	■
2.0 (XN1P)	Kg. 1800	Gasolina	FWD	1971	58	79	09.81-08.90	■
2.0 (170D (XN1TACP))	Kg. 1800	Gasolina	FWD	1971	62	84	09.90-01.94	■
2.0 (XN1TA)	Kg. 1800	Gasolina	FWD	1971	62	84	09.90-01.94	■
2.0	Kg. 1800	Gasolina	FWD	1971	69	94	09.90-01.94	■
1.9 D (D9B (XUD9A))	Kg. 1800	Diesel	FWD	1905	51	69	09.87-08.90	■
1.9 D (XUD9)	Kg. 1800	Diesel	FWD	1905	51	69	09.87-08.90	■
1.9 D (D9B (XUD9A))	Kg. 1800	Diesel	FWD	1905	51	70	10.90-03.94	■
2.5 D (CRD93)	Kg. 1800	Diesel	FWD	2498	54	73	09.81-08.90	■
2.5 D	Kg. 1800	Diesel	RWD	2498	54	73	09.81-08.90	■
2.5 D (CRD93)	Kg. 1800	Diesel	FWD	2498	54	73	09.90-01.94	■
2.5 DT (CRD93L)	Kg. 1800	Diesel	FWD	2498	70	95	09.81-08.90	■
2.5 DT (CRD93LS (U25/673))	Kg. 1800	Diesel	FWD	2498	70	95	09.81-08.90	■
2.5 DT (CRD93L)	Kg. 1800	Diesel	FWD	2498	70	95	09.90-01.94	■
2.5 DT A las 4 ruedas (CRD93L)	Kg. 1800	Diesel	4WD	2498	70	95	09.81-08.90	■
2.5 D 4x4 (CRD93 (PSA))	Kg. 1800	Diesel	4WD	2500	54	73	10.90-03.94	■
2.5 TD 4x4 (CRD93LS (U25/673))	Kg. 1800	Diesel	4WD	2500	70	95	10.90-03.94	■
TALBOT								
EXPRESS 1000 -1500 07.82-10.94					Bus (Minibus-M2-Segment)			
2.5 D (CRD93)		Diesel	FWD	2498	54	73	07.82-10.94	■
2.5 TD (CRD93LS)		Diesel	FWD	2498	70	95	06.87-10.94	■
EXPRESS 1000 -1500 07.82-10.94					Platform/Chassis (LCVs-N1 Segment)			
2.5 D (CRD93)		Diesel	FWD	2498	54	73	07.82-10.94	■
2.5 D A las 4 ruedas (CRD93)		Diesel	4WD	2498	54	73	11.88-10.94	■
2.5 TD (CRD93LS)		Diesel	FWD	2498	70	95	06.87-10.94	■
2.5 TD A las 4 ruedas (CRD93LS)		Diesel	4WD	2498	70	95	11.88-10.94	■

LISTA DE APLICACIONES - BUYERS GUIDE

EXPRESS 1000 -1800 07.81-10.94					Van (LCVs-N1 Segment)			
2.5 D (CRD93)	Diesel	FWD	2498	54	73	07.82-10.94	■	
2.5 D A las 4 ruedas (CRD93)	Diesel	4WD	2498	54	73	11.88-10.94	■	
2.5 TD (CRD93LS)	Diesel	FWD	2498	70	95	06.87-10.94	■	
2.5 TD A las 4 ruedas (CRD93LS)	Diesel	4WD	2498	70	95	11.88-10.94	■	