

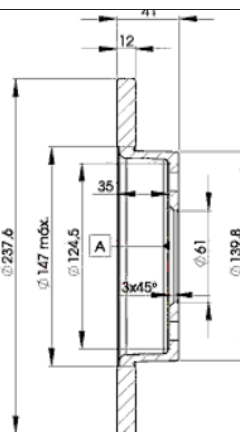
LISTA DE APLICACIONES - BUYERS GUIDE

78BD4705-2



Weight: 7.240

O.E.M.	MAKE
26 77 509 716	DACIA
77 00 704 705	RENAULT
77 01 204 282	RENAULT



78BD4705-2

E1 90R-02C0415/0002



Ø238x12x41

MAKE
DACIA
LADA
RENAULT



Trac.	CC	Kw	CV		
					Front / Rear

DACIA

1410 06.94-12.98

1.4 (102-00)	Gasolina	FWD	1397	48	65	06.94-12.98	■
--------------	----------	-----	------	----	----	-------------	---

LOGAN (LS_) 08.04-

Saloon (Compact car-C Segment)

1.4 (LSOA, LSOC, LSOE, LSOG) (K7J 710)	vehicles without ABS	Gasolina	FWD	1390	55	75	09.04-	■
1.6 (LSOB, LSOD, LSOF, LSOH) (K7M 710)	vehicles without ABS	Gasolina	FWD	1598	64	87	09.04-	■
1.6 16V (LS09, LS0L, LS0M, LS0P, LS0V, LS18, LS1S, LS1V,... (K4M 690)	vehicles without ABS	Gasolina	FWD	1598	77	105	02.06-	■
1.6 16V (LS09, LS0L, LS0M, LS0P, LS0V, LS18, LS1S, LS1V,... (K4M 694)	vehicles without ABS	Gasolina	FWD	1598	77	105	02.06-	■
1.6 16V (LS09, LS0L, LS0M, LS0P, LS0V, LS18, LS1S, LS1V,... (K4M 696)	vehicles without ABS	Gasolina	FWD	1598	77	105	02.06-	■
1.6 16V (LS09, LS0L, LS0M, LS0P, LS0V, LS18, LS1S, LS1V,... (K4M 697)	vehicles without ABS	Gasolina	FWD	1598	77	105	02.06-	■
1.6 16V (LS09, LS0L, LS0M, LS0P, LS0V, LS18, LS1S, LS1V,... (K4M 698)	vehicles without ABS	Gasolina	FWD	1598	77	105	02.06-	■
1.6 LPG (K7M 718)		Gasol./G as (LPG)	FWD	1598	64	87	08.04-03.11	■
1.0 Hi-Flex (LS0R, LS1G) (D4D 760)		Gasol./Et anol	FWD	999	56	76	01.11-10.12	■
1.6 16V Flexifuel (K4M 696)		Gasol./Et anol	FWD	1598	77	105	07.10-	■
1.5 dCi (LS0J, LS0Y) (K9K 790)	vehicles without ABS	Diesel	FWD	1461	48	65	09.05-	■
1.5 dCi (LS0K) (K9K 792)	vehicles without ABS	Diesel	FWD	1461	50	68	01.06-12.12	■
1.5 dCi (LS0W) (K9K 796)	vehicles without ABS	Diesel	FWD	1461	63	86	09.07-12.11	■

LOGAN MCV (KS_) 02.07-

Estate (Compact car-C Segment)

1.6 16V (KS0L, KS0M, KS0P, KS1S) (K4M 690)	vehicles without ABS	Gasolina	FWD	1598	77	105	02.07-	■
1.6 16V (KS0L, KS0M, KS0P, KS1S) (K4M 696)	vehicles without ABS	Gasolina	FWD	1598	77	105	02.07-	■

LISTA DE APLICACIONES - BUYERS GUIDE

1.6 16V (KS0L, KS0M, KS0P, KS1S) (K4M 697)	vehicles without ABS	Gasolina	FWD	1598	77	105	02.07-	■
NOVA 04.96-03.03					Hatchback (Supermini car-B Segment)			
1.4 (C2J)		Gasolina	FWD	1397	48	65	04.96-03.01	■
1.6		Gasolina	FWD	1557	53	72	04.96-03.03	■
SANDERO (B90) 06.08-					Hatchback (Compact car-C Segment)			
1.6 16V (K4M 690)		Gasolina	FWD	1598	77	105	07.11-	■
1.6 16V (K4M 694)		Gasolina	FWD	1598	77	105	07.11-	■
1.4 MPI LPG (K7J 714)		Gasol./Gas (LPG)	FWD	1390	53	72	01.09-	■
1.6 LPG (BS03) (K7M 818)		Gasol./Gas (LPG)	FWD	1598	60	82	01.11-12.12	■
1.6 LPG (K7M 818)		Gasol./Gas (LPG)	FWD	1598	62	84	05.10-10.12	■
1.6 LPG (K7M 718)		Gasol./Gas (LPG)	FWD	1598	64	87	06.08-12.12	■
1.0 Hi-Flex (D4D 760)		Gasol./Etanol	FWD	999	56	76	01.11-12.12	■
1.6 Hi-Flex (BS1H) (K7M 732)		Gasol./Etanol	FWD	1598	64	87	06.08-12.12	■
1.5 dCi (K9K 790)		Diesel	FWD	1461	48	65	11.08-	■
1.5 dCi (K9K 796)		Diesel	FWD	1461	63	86	11.08-	■
LADA								
LARGUS (KS0_, RS0_, KSA_) 03.12-					Estate Van (Compact car-C Segment)			
1.6 (KS035, RS035) (11189)		Gasolina	FWD	1597	64	87	06.16-	■
1.6 (KS0Y5, RS0Y5) (K7M)		Gasolina	FWD	1598	62	84	03.12-	■
1.6 (KS0Y5, RS0Y5) (K4M)		Gasolina	FWD	1598	77	105	03.12-	■
RENAULT								
CLIO (S57_) 01.91-09.98					Hatchback Van (LCVs-N1 Segment)			
1.1 (C1E 700)	06/92-	Gasolina	FWD	1108	34	46	01.91-09.98	■
1.2 (E7F 706)		Gasolina	FWD	1171	40	54	01.91-09.98	■
1.2 (E5F 710)		Gasolina	FWD	1171	44	60	01.91-09.98	■
1.2 (E7F 750)		Gasolina	FWD	1171	44	60	01.91-09.98	■
1.2 (C3G 720)		Gasolina	FWD	1239	40	54	06.94-02.98	■
1.9 RND (F8Q 678)		Diesel	FWD	1870	40	54	04.96-02.98	■
1.9 D (F8Q 730)		Diesel	FWD	1870	48	65	01.91-09.98	■
1.9 D (F8Q 732)		Diesel	FWD	1870	48	65	01.91-09.98	■
CLIO (B/C57_, 5/357_) 05.90-08.99					Hatchback (Supermini car-B Segment)			
1.1 (C1E 700)	06/92-	Gasolina	FWD	1108	34	46	01.91-09.98	■
1.2 (5/357Y, 5/357K) (D7F 730)		Gasolina	FWD	1149	40	54	01.96-09.98	■
1.2 (5/357Y, 5/357K) (D7F 730)		Gasolina	FWD	1149	43	58	01.96-09.98	■
1.2 (B/C57R, B575, B57A) (E7F 706)		Gasolina	FWD	1171	40	54	01.91-06.96	■
1.2 (B/C/S57A, B/C57S, 5/357F, 5/357J, 5/357L, 5/357R) (E7F 700)		Gasolina	FWD	1171	43	58	05.90-09.98	■
1.2 (B/C/S57A, B/C57S, 5/357F, 5/357J, 5/357L, 5/357R) (E7F 708)		Gasolina	FWD	1171	43	58	05.90-09.98	■
1.2 (B/C/S57A, B/C57S, 5/357F, 5/357J, 5/357L, 5/357R) (E7F 750)		Gasolina	FWD	1171	43	58	05.90-09.98	■
1.2 (B/C/S572) (E5F 710)		Gasolina	FWD	1171	44	60	05.90-03.96	■
1.2 (B/C/S577) (C3G 720)		Gasolina	FWD	1239	40	54	01.96-12.96	■
1.4 (B57J, C57J, B57P) (E6J 718)		Gasolina	FWD	1390	55	75	01.91-09.98	■
1.4 (B57J, C57J, B57P) (E7J 756)		Gasolina	FWD	1390	55	75	01.91-09.98	■
1.4 (B57J, C57J, B57P) (E7J 757)		Gasolina	FWD	1390	55	75	01.91-09.98	■
1.4 (E6J 712)		Gasolina	FWD	1390	57	78	05.90-02.98	■

LISTA DE APLICACIONES - BUYERS GUIDE

1.4 (E6J 713)		Gasolina	FWD	1390	57	78	05.90-02.98	■
1.4 (E6J 760)		Gasolina	FWD	1390	57	78	05.90-02.98	■
1.4 (B/C57T, B/C57Y) (E7J 601)		Gasolina	FWD	1390	58	79	01.91-09.98	■
1.4 (B/C57T, B/C57Y) (E7J 718)		Gasolina	FWD	1390	58	79	01.91-09.98	■
1.4 (B/C57T, B/C57Y) (E7J 719)		Gasolina	FWD	1390	58	79	01.91-09.98	■
1.4 (B/C57T, B/C57Y) (E7J 754)		Gasolina	FWD	1390	58	79	01.91-09.98	■
1.4 (E7J 710)		Gasolina	FWD	1390	59	80	01.91-09.98	■
1.4 (E7J 711)		Gasolina	FWD	1390	59	80	01.91-09.98	■
Electric (2DB 701)		Eléctrico	FWD		21	30	05.96-02.98	■
1.9 D (F8Q 678)		Diesel	FWD	1870	40	54	01.97-09.98	■
1.9 D (B/C/S576, B/C/S57L) (F8Q 730)		Diesel	FWD	1870	47	64	01.91-09.98	■
1.9 D (B/C/S576, B/C/S57L) (F8Q 732)		Diesel	FWD	1870	47	64	01.91-09.98	■
1.9 D (F8Q 632)		Diesel	FWD	1870	48	65	05.96-02.98	■
1.9 D (F8Q 676)		Diesel	FWD	1870	48	65	05.96-02.98	■
1.9 D (F8Q 696)		Diesel	FWD	1870	48	65	05.96-02.98	■
1.9 D (F8Q 714)		Diesel	FWD	1870	48	65	05.96-02.98	■
CLIO II (SB0/1/2_) 09.98-							Hatchback Van (LCVs-N1 Segment)	
1.2 (SB0A, SB0F, SB1K, SB2D) (D7F 720)	-05/01, vehicles without ABS	Gasolina	FWD	1149	43	58	09.98-	■
1.2 (SB0A, SB0F, SB1K, SB2D) (D7F 726)	-05/01, vehicles without ABS	Gasolina	FWD	1149	43	58	09.98-	■
1.2 (SB0A, SB0F, SB1K, SB2D) (D7F 746)	-05/01, vehicles without ABS	Gasolina	FWD	1149	43	58	09.98-	■
1.2 (SB0A, SB0F, SB10) (D7F 722)	-05/01, vehicles without ABS	Gasolina	FWD	1149	44	60	03.99-10.03	■
1.2 (SB0A, SB0F, SB10) (D7F 726)	-05/01, vehicles without ABS	Gasolina	FWD	1149	44	60	03.99-10.03	■
1.2 (SB0A, SB0F, SB10) (D7F 746)	-05/01, vehicles without ABS	Gasolina	FWD	1149	44	60	03.99-10.03	■
1.9 D (SB0R) (F8Q 662)	vehicles without ABS	Diesel	FWD	1870	40	54	03.99-01.00	■
1.9 D (SB0E) (F8Q 630)	-05/01, vehicles without ABS	Diesel	FWD	1870	47	64	09.98-	■
1.9 D (SB0J) (F8Q 632)	vehicles without ABS	Diesel	FWD	1870	48	65	02.00-05.01	■
CLIO II (BB_, CB_) 03.98-							Hatchback (Supermini car-B Segment)	
1.2 (BB0A, BB0F, BB10, BB1K, BB28, BB2D, BB2H, CB0A,... (D7F 710)	-05/01, vehicles without ABS	Gasolina	FWD	1149	43	58	09.98-02.10	■
1.2 (BB0A, BB0F, BB10, BB1K, BB28, BB2D, BB2H, CB0A,... (D7F 720)	-05/01, vehicles without ABS	Gasolina	FWD	1149	43	58	09.98-02.10	■
1.2 (BB0A, BB0F, BB10, BB1K, BB28, BB2D, BB2H, CB0A,... (D7F 722)	-05/01, vehicles without ABS	Gasolina	FWD	1149	43	58	09.98-02.10	■
1.2 (BB0A, BB0F, BB10, BB1K, BB28, BB2D, BB2H, CB0A,... (D7F 726)	-05/01, vehicles without ABS	Gasolina	FWD	1149	43	58	09.98-02.10	■
1.2 (BB0A, BB0F, BB10, BB1K, BB28, BB2D, BB2H, CB0A,... (D7F 746)	-05/01, vehicles without ABS	Gasolina	FWD	1149	43	58	09.98-02.10	■
1.2 (BB0A, BB0F, BB10, BB1K, BB28, BB2D, BB2H, CB0A,... (D7F 764)	-05/01, vehicles without ABS	Gasolina	FWD	1149	43	58	09.98-02.10	■
1.2 (BB0A, BB0F, BB10, BB1K, BB28, BB2D, BB2H, CB0A,... (D7F 766)	-05/01, vehicles without ABS	Gasolina	FWD	1149	43	58	09.98-02.10	■
1.4 (B/CB0C, B/CB0S) (E7J 634)	-05/01, vehicles without ABS	Gasolina	FWD	1390	55	75	09.98-05.05	■
1.4 (B/CB0C, B/CB0S) (E7J 635)	-05/01, vehicles without ABS	Gasolina	FWD	1390	55	75	09.98-05.05	■
1.4 (B/CB0C, B/CB0S) (E7J 780)	-05/01, vehicles without ABS	Gasolina	FWD	1390	55	75	09.98-05.05	■
1.4 (B/CB0C, B/CB0S) (K7J 700)	-05/01, vehicles without ABS	Gasolina	FWD	1390	55	75	09.98-05.05	■
1.4 16V (B/CB0L) (K4J 712)	vehicles without ABS	Gasolina	FWD	1390	70	95	10.99-09.04	■
1.4 16V (B/CB0L) (K4J 713)	vehicles without ABS	Gasolina	FWD	1390	70	95	10.99-09.04	■
1.2 LPG (D7F 764)		Gasol./G as (LPG)	FWD	1149	43	58	09.98-06.09	■
1.2 LPG (D7F 766)		Gasol./G as (LPG)	FWD	1149	43	58	09.98-06.09	■
1.2 LPG (BB0A, CB0A) (D7F 722)	vehicles without ABS	Gasol./G as (LPG)	FWD	1149	44	60	03.99-05.01	■
1.6 Flex (K4M 740)		Gasol./Et anol	FWD	1598	81	110	05.00-12.06	■
1.6 Flex (K4M 748)		Gasol./Et anol	FWD	1598	81	110	05.00-12.06	■

LISTA DE APLICACIONES - BUYERS GUIDE

1.9 D (B/CB0E, BB0J) (F8Q 630)	vehicles without ABS	Diesel	FWD	1870	47	64	09.98-05.05	■
1.9 D (B/CB0J) (F8Q 630)	vehicles without ABS	Diesel	FWD	1870	48	65	02.00-05.01	■
1.9 D (B/CB0J) (F8Q 632)	vehicles without ABS	Diesel	FWD	1870	48	65	02.00-05.01	■
EXPRESS 07.95-03.98					Box Body/MPV (LCVs-N1 Segment)			
1.9 D		Diesel	FWD	1870	47	64	07.95-03.98	■
EXPRESS 07.95-10.99					Pickup (LCVs-N1 Segment)			
1.2 (C3G 710)		Gasolina	FWD	1239	40	54	07.95-10.99	■
1.9 D (F8Q 640)		Diesel	FWD	1870	40	54	07.95-10.97	■
1.9 D (F8Q 724)		Diesel	FWD	1870	47	64	07.95-10.99	■
1.9 D (F8Q 776)		Diesel	FWD	1870	47	64	07.95-10.99	■
LOGAN / TONDAR 90 (KS_) 04.07-					Estate (Compact car-C Segment)			
1.4 (K7J 710)		Gasolina	FWD	1390	55	75	10.07-	■
1.6 (K7M 710)		Gasolina	FWD	1598	64	87	04.07-	■
1.6 (KS0L, KS0M, KS0P, KS1S) (K4M 690)		Gasolina	FWD	1598	77	105	04.07-	■
1.6 (KS0L, KS0M, KS0P, KS1S) (K4M 696)		Gasolina	FWD	1598	77	105	04.07-	■
1.6 (KS0L, KS0M, KS0P, KS1S) (K4M 697)		Gasolina	FWD	1598	77	105	04.07-	■
LOGAN / TONDAR 90 (LS_) 09.04-					Saloon (Compact car-C Segment)			
1.4 LPG (K7J 714)		Gasol./G as (LPG)	FWD	1390	53	72	02.08-10.13	■
MEGANE (BA0/1_) 08.95-12.04					Hatchback (Compact car-C Segment)			
1.4 Eco (BA0T) (E7J 624)	-09/98	Gasolina	FWD	1390	52	71	01.96-03.99	■
1.4 e (BA0E, BA0V) (E7J 626)	-09/98	Gasolina	FWD	1390	55	75	01.96-08.03	■
1.4 e (BA0E, BA0V) (E7J 764)	-09/98	Gasolina	FWD	1390	55	75	01.96-08.03	■
1.6 i (BA0L) (K7M 720)	-11/97	Gasolina	FWD	1598	55	75	01.96-03.99	■
1.6 e (BA0F, BA0S) (K7M 702)	-11/97	Gasolina	FWD	1598	66	90	01.96-03.99	■
1.6 e (BA0F, BA0S) (K7M 703)	-11/97	Gasolina	FWD	1598	66	90	01.96-03.99	■
1.6 e (BA0F, BA0S) (K7M 790)	-11/97	Gasolina	FWD	1598	66	90	01.96-03.99	■
1.6 LPG (K7M 702)		Gasol./G as (LPG)	FWD	1598	66	90	08.95-03.99	■
1.9 D Eco (BA0A, BA0U, BA0R) (F8Q 620)	-11/97	Diesel	FWD	1870	47	64	01.96-08.03	■
1.9 D Eco (BA0A, BA0U, BA0R) (F8Q 622)	-11/97	Diesel	FWD	1870	47	64	01.96-08.03	■
1.9 D Eco (BA0A, BA0U, BA0R) (F8Q 624)	-11/97	Diesel	FWD	1870	47	64	01.96-08.03	■
MEGANE Classic (LA0/1_) 09.96-08.08					Saloon (Compact car-C Segment)			
1.4 (LA0E, LA0V) (E7J 626)	-11/97	Gasolina	FWD	1390	55	75	09.96-08.03	■
1.4 (LA0E, LA0V) (E7J 764)	-11/97	Gasolina	FWD	1390	55	75	09.96-08.03	■
1.6 e (LA0F, LA0S) (K7M 702)	-11/97	Gasolina	FWD	1598	66	90	09.96-03.99	■
1.6 e (LA0F, LA0S) (K7M 703)	-11/97	Gasolina	FWD	1598	66	90	09.96-03.99	■
1.6 e (LA0F, LA0S) (K7M 790)	-11/97	Gasolina	FWD	1598	66	90	09.96-03.99	■
1.9 D (LA0A, LA0U, LA0R) (F8Q 620)	-11/97	Diesel	FWD	1870	47	64	09.96-08.03	■
1.9 D (LA0A, LA0U, LA0R) (F8Q 622)	-11/97	Diesel	FWD	1870	47	64	09.96-08.03	■
1.9 D (LA0A, LA0U, LA0R) (F8Q 624)	-11/97	Diesel	FWD	1870	47	64	09.96-08.03	■
MEGANE Hatchback Van (SA0/1_) 08.95-07.03					Hatchback Van (Compact car-C Segment)			
1.9 (SA0U, SA0R, SA0A) (F8Q 620)	-11/97	Diesel	FWD	1870	47	64	08.95-09.00	■
1.9 (SA0U, SA0R, SA0A) (F8Q 622)	-11/97	Diesel	FWD	1870	47	64	08.95-09.00	■
1.9 (SA0U, SA0R, SA0A) (F8Q 624)	-11/97	Diesel	FWD	1870	47	64	08.95-09.00	■
R 11 (S37_) 03.83-07.89					Hatchback Van (LCVs-N1 Segment)			
1.1 (S371) (C1E 715)		Gasolina	FWD	1108	35	48	03.83-06.86	■
1.1 (S371) (C1E 720)		Gasolina	FWD	1108	35	48	03.83-06.86	■
1.2 (S37S) (C1G 700)		Gasolina	FWD	1237	40	55	10.84-12.88	■

LISTA DE APLICACIONES - BUYERS GUIDE

1.2 (S37S) (C1G 710)		Gasolina	FWD	1237	40	55	10.84-12.88	■
1.4 (S372) (C1J 715)		Gasolina	FWD	1397	44	60	03.83-09.86	■
1.4 (S372) (C2J 730)		Gasolina	FWD	1397	44	60	03.83-09.86	■
1.4 (S373) (C2J 768)		Gasolina	FWD	1397	50	68	03.83-12.86	■
1.6 D (S374) (F8M 700)		Diesel	FWD	1595	40	55	08.83-12.88	■
1.6 D (S374) (F8M 720)		Diesel	FWD	1595	40	55	08.83-12.88	■
1.6 D (S374) (F8M 730)		Diesel	FWD	1595	40	55	08.83-12.88	■
R 11 / ENCORE (B/C37_) 03.83-09.95					Hatchback (Compact car-C Segment)			
1.1 (B/C371) (C1E 715)		Gasolina	FWD	1108	35	48	03.83-06.86	■
1.1 (B/C371) (C1E 720)		Gasolina	FWD	1108	35	48	03.83-06.86	■
1.2 (B37S, C375) (C1G 700)		Gasolina	FWD	1237	40	55	10.84-12.88	■
1.2 (B37S, C375) (C1G 710)		Gasolina	FWD	1237	40	55	10.84-12.88	■
1.4 (C2J 720)		Gasolina	FWD	1397	43	58	07.86-10.87	■
1.4 (B/C372, B/C37C) (C1J 715)		Gasolina	FWD	1397	44	60	03.83-12.88	■
1.4 (B/C372, B/C37C) (C2J 730)		Gasolina	FWD	1397	44	60	03.83-12.88	■
1.4 (B/C373, B/C37R) (C2J 720)		Gasolina	FWD	1397	49	67	03.83-12.88	■
1.4 (B/C373, B/C37R) (C2J 766)		Gasolina	FWD	1397	49	67	03.83-12.88	■
1.4 (B/C373, B/C37R) (C2J 767)		Gasolina	FWD	1397	49	67	03.83-12.88	■
1.4 (B/C373, B/C37R) (C2J 768)		Gasolina	FWD	1397	49	67	03.83-12.88	■
1.4 (B/C373) (C2J 718)		Gasolina	FWD	1397	50	68	03.83-12.85	■
1.4 (B/C373) (C2J 757)		Gasolina	FWD	1397	50	68	03.83-12.85	■
1.4 (B/C373) (C2J 717)		Gasolina	FWD	1397	53	72	05.83-12.85	■
1.4 (B/C373) (C2J 755)		Gasolina	FWD	1397	53	72	05.83-12.85	■
1.7 (B/C37L) (F2N 730)		Gasolina	FWD	1721	54	73	10.86-12.88	■
1.7 (B/C37F) (F3N 718)		Gasolina	FWD	1721	55	75	10.84-12.88	■
1.7 (B/C376) (F2N 700)		Gasolina	FWD	1721	59	80	10.83-12.87	■
1.7 (B/C376) (F2N 704)		Gasolina	FWD	1721	59	80	10.83-12.87	■
1.7 (B/C37D) (F2N 732)		Gasolina	FWD	1721	64	87	06.87-12.88	■
1.7 (B/C37D) (F2N 742)		Gasolina	FWD	1721	64	87	06.87-12.88	■
1.7 (B37N, C73N) (F2N 708)		Gasolina	FWD	1721	65	88	10.86-12.88	■
1.7 (B37N, C73N) (F2N 710)		Gasolina	FWD	1721	65	88	10.86-12.88	■
1.7 (B37N, C73N) (F2N 798)		Gasolina	FWD	1721	65	88	10.86-12.88	■
1.7 (B/C37E) (F3N 708)		Gasolina	FWD	1721	69	94	06.87-12.88	■
1.6 D (B/C374) (F8M 700)		Diesel	FWD	1595	40	55	08.83-12.88	■
1.6 D (B/C374) (F8M 720)		Diesel	FWD	1595	40	55	08.83-12.88	■
1.6 D (B/C374) (F8M 730)		Diesel	FWD	1595	40	55	08.83-12.88	■
R 19 (S53_) 01.88-12.92					Hatchback Van (LCVs-N1 Segment)			
1.2 (C1G 730)		Gasolina	FWD	1237	40	54	01.88-12.92	■
1.4 (E6J 700)		Gasolina	FWD	1390	59	80	01.88-12.92	■
1.9 D (F8Q 706)		Diesel	FWD	1870	48	65	01.88-12.92	■
1.9 D (F8Q 742)		Diesel	FWD	1870	48	65	01.88-12.92	■
R 19 (B/C53_) 01.88-09.94					Hatchback (Compact car-C Segment)			
1.2 (C1G 730)		Gasolina	FWD	1237	40	54	01.88-12.92	■
1.4 Cat (B/C532) (C3J 710)		Gasolina	FWD	1390	43	58	01.89-04.92	■
1.4 (E7J 700)		Gasolina	FWD	1390	55	75	09.90-04.92	■
1.4 (E6J 700)		Gasolina	FWD	1390	59	80	01.88-12.92	■
1.4 (E6J 701)		Gasolina	FWD	1390	59	80	01.88-12.92	■
1.4 (B/C53P) (C2J 772)		Gasolina	FWD	1397	43	58	01.89-05.93	■
1.7 (B/C53B) (F3N 740)		Gasolina	FWD	1721	54	73	09.88-04.92	■
1.7 (B/C53B) (F3N 741)		Gasolina	FWD	1721	54	73	09.88-04.92	■

LISTA DE APLICACIONES - BUYERS GUIDE

1.9 D (B/C534, B/C53J) (F8Q 706)		Diesel	FWD	1870	47	64	09.88-04.92	■
1.9 D (B/C534, B/C53J) (F8Q 742)		Diesel	FWD	1870	47	64	09.88-04.92	■
R 19 (L53_) 01.88-12.92					Saloon (Compact car-C Segment)			
1.1 TR		Gasolina	FWD	1108	35	48	07.88-04.92	■
1.2 (C1G 730)		Gasolina	FWD	1237	40	54	01.88-12.92	■
1.4 (L532, L53P) (C2J 772)		Gasolina	FWD	1390	43	58	07.88-04.92	■
1.4 (L532, L53P) (C3J 710)		Gasolina	FWD	1390	43	58	07.88-04.92	■
1.4 (E7J 700)		Gasolina	FWD	1390	55	75	09.90-04.92	■
1.4 (E6J 700)		Gasolina	FWD	1390	57	78	07.88-08.90	■
1.4 (E6J 701)		Gasolina	FWD	1390	57	78	07.88-08.90	■
1.4 (E6J 700)		Gasolina	FWD	1390	58	79	06.89-08.90	■
1.7 (L53B) (F3N 740)		Gasolina	FWD	1721	54	73	10.89-04.92	■
1.7 (L53B) (F3N 741)		Gasolina	FWD	1721	54	73	10.89-04.92	■
1.9 D (L534, L53J) (F8Q 706)		Diesel	FWD	1870	47	64	10.89-04.92	■
1.9 D (L534, L53J) (F8Q 742)		Diesel	FWD	1870	47	64	10.89-04.92	■
R 19 II (S53_) 03.92-12.95					Hatchback Van (LCVs-N1 Segment)			
1.2 (C1G 730)		Gasolina	FWD	1237	40	54	03.92-12.95	■
1.4 (E6J 700)		Gasolina	FWD	1390	59	80	03.92-12.95	■
1.9 D (F8Q 706)		Diesel	FWD	1870	48	65	03.92-12.95	■
1.9 D (F8Q 742)		Diesel	FWD	1870	48	65	03.92-12.95	■
1.9 DT (F8Q 740)		Diesel	FWD	1870	68	92	03.92-12.95	■
R 19 II (B/C53_) 01.91-06.01					Hatchback (Compact car-C Segment)			
1.2 (E7F 730)		Gasolina	FWD	1171	44	60	05.92-09.94	■
1.2 (C1G 730)		Gasolina	FWD	1237	40	54	04.92-12.95	■
1.4 (B/C532) (C3J 710)		Gasolina	FWD	1390	43	58	04.92-12.95	■
1.4 (B/C535) (E7J 742)		Gasolina	FWD	1390	55	75	01.92-12.95	■
1.4 (E6J 700)		Gasolina	FWD	1390	57	78	05.93-12.98	■
1.4 (E6J 700)		Gasolina	FWD	1390	59	80	01.92-12.95	■
1.4 (E7J 706)		Gasolina	FWD	1390	59	80	01.92-12.95	■
1.4 (E6J 706)		Gasolina	FWD	1390	60	82	10.96-06.01	■
1.7 (B/C53B) (F3N 740)		Gasolina	FWD	1721	54	73	04.92-12.95	■
1.7 (B/C53B) (F3N 741)		Gasolina	FWD	1721	54	73	04.92-12.95	■
1.7 (B/C53C) (F3N 743)		Gasolina	FWD	1721	66	90	04.92-12.95	■
1.7 (F3N 746)		Gasolina	FWD	1721	79	107	05.92-09.94	■
1.9 D (B/C53J) (F8Q 742)		Diesel	FWD	1870	47	64	04.92-12.95	■
1.9 D		Diesel	FWD	1870	75	102	07.98-06.01	■
R 19 II CHAMADE (L53_) 04.92-08.03					Saloon (Compact car-C Segment)			
1.2 (E7F 730)		Gasolina	FWD	1171	44	60	05.92-09.94	■
1.4 (532) (C3J 710)		Gasolina	FWD	1390	43	58	04.92-12.95	■
1.4 (C1J 742)		Gasolina	FWD	1390	44	60	05.92-09.94	■
1.4 (C2J 772)		Gasolina	FWD	1390	44	60	05.92-09.94	■
1.4 (C3J 710)		Gasolina	FWD	1390	44	60	05.92-09.94	■
1.4 (L535) (E7J 742)		Gasolina	FWD	1390	55	75	11.93-12.95	■
1.4 (E6J 700)		Gasolina	FWD	1390	57	78	10.94-11.95	■
1.4 (E7J 706)		Gasolina	FWD	1390	59	80	10.94-11.95	■
1.7 (L53B) (F3N 740)		Gasolina	FWD	1721	54	73	04.92-12.95	■
1.7 (L53B) (F3N 741)		Gasolina	FWD	1721	54	73	04.92-12.95	■
1.7 (F3N 740)		Gasolina	FWD	1721	55	75	05.92-11.95	■
1.7 (F3N 741)		Gasolina	FWD	1721	55	75	05.92-11.95	■
1.7 (L53C) (F3N 742)		Gasolina	FWD	1721	66	90	04.92-12.95	■

LISTA DE APLICACIONES - BUYERS GUIDE

1.7 (L53C) (F3N 743)		Gasolina	FWD	1721	66	90	04.92-12.95	■
1.9 D (L53J) (F8Q 742)		Diesel	FWD	1870	47	64	04.92-12.97	■
R 21 (B48_) 07.89-06.94					Hatchback (Large family car-D Segment)			
1.4 (B48D) (C2J 770)		Gasolina	FWD	1397	51	69	09.89-05.93	■
1.7 (B48F) (F3N 726)		Gasolina	FWD	1721	54	73	09.89-10.92	■
1.7 (F2N 712)		Gasolina	FWD	1721	55	75	07.89-05.93	■
1.7 (F3N 726)		Gasolina	FWD	1721	55	75	07.89-05.93	■
1.7 (F2N 711)		Gasolina	FWD	1721	65	88	07.89-05.93	■
1.7 (F2N 754)		Gasolina	FWD	1721	65	88	07.89-05.93	■
1.7 (B48E) (F3N 722)		Gasolina	FWD	1721	66	90	09.89-06.94	■
1.7 (B48E) (F3N 723)		Gasolina	FWD	1721	66	90	09.89-06.94	■
R 21 (L48_) 03.86-07.97					Saloon (Large family car-D Segment)			
1.4 (L48D) (C2J 770)		Gasolina	FWD	1397	51	69	06.88-10.93	■
1.7 (L48M, L48F) (F2N 750)		Gasolina	FWD	1721	54	73	07.86-02.94	■
1.7 (L48M, L48F) (F3N 726)		Gasolina	FWD	1721	54	73	07.86-02.94	■
1.7 (L481) (F2N 712)		Gasolina	FWD	1721	55	75	03.86-12.87	■
1.7 (L48N) (F2N 752)		Gasolina	FWD	1721	64	87	06.87-04.89	■
1.7 (L482) (F2N 710)		Gasolina	FWD	1721	65	88	03.86-03.93	■
1.7 (L48E) (F3N 722)		Gasolina	FWD	1721	66	90	09.89-02.94	■
1.7 (L48E) (F3N 723)		Gasolina	FWD	1721	66	90	09.89-02.94	■
1.7 (L48E) (F3N 722)		Gasolina	FWD	1721	69	94	03.86-02.94	■
1.7 (L48E) (F3N 723)		Gasolina	FWD	1721	69	94	03.86-02.94	■
1.7 (F3N 722)		Gasolina	FWD	1721	70	95	04.86-06.89	■
1.7 (F3N 723)		Gasolina	FWD	1721	70	95	04.86-06.89	■
R 9 / ALLIANCE (L42_) 09.81-02.97					Saloon (Compact car-C Segment)			
1.1 (L421) (C1E 715)	09/83-	Gasolina	FWD	1108	35	48	09.81-05.87	■
1.1 (L421) (C1E 720)	09/83-	Gasolina	FWD	1108	35	48	09.81-05.87	■
1.2 (L42S) (C1G 700)		Gasolina	FWD	1237	40	54	09.85-12.88	■
1.2 (L42S) (C1G 710)		Gasolina	FWD	1237	40	54	09.85-12.88	■
1.4 (L422, L42C) (C1J 715)	09/83-	Gasolina	FWD	1397	44	60	12.81-12.88	■
1.4 (L422, L42C) (C1J 792)	09/83-	Gasolina	FWD	1397	44	60	12.81-12.88	■
1.4 (L422, L42C) (C1J 796)	09/83-	Gasolina	FWD	1397	44	60	12.81-12.88	■
1.4 (L422, L42C) (C2J 730)	09/83-	Gasolina	FWD	1397	44	60	12.81-12.88	■
1.4 (L423, L42R) (C2J 720)		Gasolina	FWD	1397	49	67	09.85-12.88	■
1.4 (L423, L42R) (C2J 766)		Gasolina	FWD	1397	49	67	09.85-12.88	■
1.4 (L423, L42R) (C2J 767)		Gasolina	FWD	1397	49	67	09.85-12.88	■
1.4 (L423, L42R) (C2J 768)		Gasolina	FWD	1397	49	67	09.85-12.88	■
1.4 Automatik (L423) (C2J 718)	08/83-	Gasolina	FWD	1397	50	68	09.81-12.85	■
1.4 Automatik (L423) (C2J 757)	08/83-	Gasolina	FWD	1397	50	68	09.81-12.85	■
1.4 (L423) (C2J 717)	09/83-	Gasolina	FWD	1397	53	72	09.81-12.85	■
1.4 (L423) (C2J 755)	09/83-	Gasolina	FWD	1397	53	72	09.81-12.85	■
1.7 (L42F) (F3N 718)		Gasolina	FWD	1721	54	73	10.86-12.88	■
1.7 (L42L) (F2N 730)		Gasolina	FWD	1721	55	75	10.86-12.88	■
1.7 (L426) (F2N 700)		Gasolina	FWD	1721	59	80	09.84-12.89	■
1.7 (L426) (F2N 704)		Gasolina	FWD	1721	59	80	09.84-12.89	■
1.7 (L42N) (F2N 708)		Gasolina	FWD	1721	65	88	10.86-12.88	■
1.7 (L42N) (F2N 710)		Gasolina	FWD	1721	65	88	10.86-12.88	■
1.7 (L42N) (F2N 798)		Gasolina	FWD	1721	65	88	10.86-12.88	■
1.7 (L42E) (F3N 708)		Gasolina	FWD	1721	69	94	06.87-12.88	■
1.6 D (L424) (F8M 700)		Diesel	FWD	1595	40	55	10.82-12.88	■

LISTA DE APLICACIONES - BUYERS GUIDE

1.6 D (L424) (F8M 720)		Diesel	FWD	1595	40	55	10.82-12.88	■
1.6 D (L424) (F8M 730)		Diesel	FWD	1595	40	55	10.82-12.88	■
RAPID / EXTRA / EXPRESS (F40_, G40_) 07.85-11.01					Box Body/MPV (LCVs-N1 Segment)			
1.1 (F401) (C1E 750)	06/88-	Gasolina	FWD	1108	33	45	07.85-04.95	■
1.1 (F401) (C1E 752)	06/88-	Gasolina	FWD	1108	33	45	07.85-04.95	■
1.1 (F401) (C1E 754)	06/88-	Gasolina	FWD	1108	33	45	07.85-04.95	■
1.1 (F401) (C1E 760)	06/88-	Gasolina	FWD	1108	33	45	07.85-04.95	■
1.1 (F401) (C1E 762)	06/88-	Gasolina	FWD	1108	33	45	07.85-04.95	■
1.1 (F401) (C1E 792)	06/88-	Gasolina	FWD	1108	33	45	07.85-04.95	■
1.1 (C1E 750)	06/88-	Gasolina	FWD	1108	34	46	09.85-08.91	■
1.1 (C1E 762)		Gasolina	FWD	1108	35	48	09.93-04.95	■
1.2 (E7F 708)		Gasolina	FWD	1171	48	65	05.95-11.98	■
1.2 (C1G 726)		Gasolina	FWD	1237	40	54	09.91-08.93	■
1.2 (F406, G40A) (C3G 710)		Gasolina	FWD	1239	40	55	09.91-03.98	■
1.2 (F406, G40A) (C3G 712)		Gasolina	FWD	1239	40	55	09.91-03.98	■
1.4 (F40Y, F40A, F40V) (E6J 734)		Gasolina	FWD	1390	43	58	09.91-08.97	■
1.4 (F40Y, F40A, F40V) (E6J 738)		Gasolina	FWD	1390	43	58	09.91-08.97	■
1.4 (F40Y, F40A, F40V) (E7J 720)		Gasolina	FWD	1390	43	58	09.91-08.97	■
1.4 Cat (F407) (C3J 700)		Gasolina	FWD	1390	43	58	08.88-03.98	■
1.4 Cat (F407) (C3J 702)		Gasolina	FWD	1390	43	58	08.88-03.98	■
1.4 Cat (F407) (C3J 760)		Gasolina	FWD	1390	43	58	08.88-03.98	■
1.4 Cat (F407) (C3J 762)		Gasolina	FWD	1390	43	58	08.88-03.98	■
1.4 RN (E6J 734)		Gasolina	FWD	1390	44	60	09.91-08.93	■
1.4 (E7J 724)		Gasolina	FWD	1390	54	73	09.91-08.93	■
1.4 (F40U, F40V) (E7J 720)		Gasolina	FWD	1390	55	75	09.91-03.98	■
1.4 (F40U, F40V) (E7J 724)		Gasolina	FWD	1390	55	75	09.91-03.98	■
1.4 (F40U, F40V) (E7J 726)		Gasolina	FWD	1390	55	75	09.91-03.98	■
1.4 (F40U, F40V) (E7J 773)		Gasolina	FWD	1390	55	75	09.91-03.98	■
1.4 (F40D) (E7J 728)		Gasolina	FWD	1390	58	79	01.94-03.98	■
1.4 (E7J 773)		Gasolina	FWD	1390	59	80	05.95-08.97	■
1.4 (F402) (C1J 768)		Gasolina	FWD	1397	43	58	07.85-08.91	■
1.4 (F402) (C1J 780)		Gasolina	FWD	1397	43	58	07.85-08.91	■
1.4 (F40M) (C2J 784)		Gasolina	FWD	1397	44	60	03.86-08.91	■
Electric (2BD 700)		Eléctrico	FWD		21	29	01.94-11.98	■
1.6 D (F8M 736)		Diesel	FWD	1595	40	54	09.93-04.95	■
1.6 D (F404) (F8M 720)	09/86-	Diesel	FWD	1595	40	55	03.86-08.98	■
1.6 D (F404) (F8M 730)	09/86-	Diesel	FWD	1595	40	55	03.86-08.98	■
1.6 D (F404) (F8M 736)	09/86-	Diesel	FWD	1595	40	55	03.86-08.98	■
1.6 D (F404) (F8M 760)	09/86-	Diesel	FWD	1595	40	55	03.86-08.98	■
1.9 D (F40R) (F8Q 640)		Diesel	FWD	1870	40	54	09.94-03.98	■
1.9 D (F40R) (F8Q 648)		Diesel	FWD	1870	40	54	09.94-03.98	■
1.9 D (F40R) (F8Q 682)		Diesel	FWD	1870	40	54	09.94-03.98	■
1.9 D (F40P, F40N, F40E) (F8Q 646)		Diesel	FWD	1870	47	64	09.91-03.98	■
1.9 D (F40P, F40N, F40E) (F8Q 722)		Diesel	FWD	1870	47	64	09.91-03.98	■
1.9 D (F40P, F40N, F40E) (F8Q 724)		Diesel	FWD	1870	47	64	09.91-03.98	■
1.9 D (F40P, F40N, F40E) (F8Q 774)		Diesel	FWD	1870	47	64	09.91-03.98	■
1.9 D (F40P, F40N, F40E) (F8Q 776)		Diesel	FWD	1870	47	64	09.91-03.98	■
SANDERO II /STEPWAY II (B8_) 11.13-					Hatchback (Compact car-C Segment)			
1.6		Gasolina	FWD	1598	60	82	11.13-	■

LISTA DE APLICACIONES - BUYERS GUIDE

SANDERO/STEPWAY (BS_) 11.07-					Hatchback (Compact car-C Segment)			
1.4 (K7J 710)		Gasolina	FWD	1390	55	75	02.09-	■
1.6 (K7M 718)		Gasolina	FWD	1598	62	84	11.10-	■
1.6 (BS0H, BS0F) (K7M 710)		Gasolina	FWD	1598	64	87	02.09-	■
1.6		Gasolina	FWD	1598	66	90	05.09-	■
1.6 (K7M 710)		Gasolina	FWD	1598	75	102	12.07-	■
1.6 (K4M 697)		Gasolina	FWD	1598	76	103	12.07-07.13	■
1.6 (K4M 690)		Gasolina	FWD	1598	77	105	12.12-	■
1.6 (BS0V, BS1V)		Gasolina	FWD	1598	82	112	09.09-	■
1.4 LPG (K7J 714)		Gasol./Gas (LPG)	FWD	1390	53	72	02.09-	■
1.6 Flex		Gasol./Etanol	FWD	1598	77	105	12.12-	■
1.6 Flex (BS0V, BS1V, BS09)		Gasol./Etanol	FWD	1598	82	112	08.08-	■
SUPER 5 (S40_) 10.84-12.96					Hatchback Van (LCVs-N1 Segment)			
1.2 (C1G 702)		Gasolina	FWD	1237	40	54	07.87-06.89	■
1.2 (S40F, S407) (C1G 702)	-09/90	Gasolina	FWD	1237	44	60	01.87-12.96	■
1.4 (C3J 700)		Gasolina	FWD	1397	44	60	09.85-07.86	■
1.4 (C1J 788)		Gasolina	FWD	1397	85	116	04.85-10.87	■
1.6 D (S404) (F8M 720)	-09/92	Diesel	FWD	1595	40	54	10.84-12.96	■
SUPER 5 (B/C40_) 10.84-12.96					Hatchback (Supermini car-B Segment)			
1.2 (B/C40F) (C1G 702)		Gasolina	FWD	1237	40	55	01.87-08.90	■
1.2 (B/C40F) (C1G 720)		Gasolina	FWD	1237	40	55	01.87-08.90	■
1.2 (B/C40F) (C1G 722)		Gasolina	FWD	1237	40	55	01.87-08.90	■
1.4		Gasolina	FWD	1390	43	58	08.86-12.96	■
1.4 Cat (B/C/407) (C3J 700)		Gasolina	FWD	1390	43	58	10.85-12.96	■
1.4 Cat (B/C/407) (C3J 702)		Gasolina	FWD	1390	43	58	10.85-12.96	■
1.4 Cat (B/C/407) (C3J 760)		Gasolina	FWD	1390	43	58	10.85-12.96	■
1.4 (B/C402) (C1J 768)		Gasolina	FWD	1397	43	59	10.84-06.88	■
1.4 (B/C402) (C1J 780)		Gasolina	FWD	1397	43	59	10.84-06.88	■
1.4 (B/C40M) (C2J 784)		Gasolina	FWD	1397	44	60	06.87-08.90	■
1.4 (B/C40J) (C2J 782)		Gasolina	FWD	1397	49	67	06.87-07.89	■
1.4 (B/C403) (C2J 700)		Gasolina	FWD	1397	52	71	10.84-07.89	■
1.4 (B/C403) (C2J 780)		Gasolina	FWD	1397	52	71	10.84-07.89	■
1.4 (B/C403) (C2J 781)		Gasolina	FWD	1397	52	71	10.84-07.89	■
1.4 (B/C403) (C2J 788)		Gasolina	FWD	1397	52	71	10.84-07.89	■
1.4 (B/C403) (C2J 789)		Gasolina	FWD	1397	52	71	10.84-07.89	■
1.4 (B/C403) (C2J 798)		Gasolina	FWD	1397	52	71	10.84-07.89	■
1.7 (B/C408) (F3N 716)		Gasolina	FWD	1721	54	73	10.86-03.95	■
1.7 (B/C408) (F3N 717)		Gasolina	FWD	1721	54	73	10.86-03.95	■
1.7 i (C409) (F3N 702)		Gasolina	FWD	1721	69	94	10.86-08.91	■
1.7 i (C409) (F3N 722)		Gasolina	FWD	1721	69	94	10.86-08.91	■
1.6 D (F8M 730)	02/86-	Diesel	FWD	1595	40	54	04.85-12.90	■
1.6 D (B/C/404) (F8M 720)		Diesel	FWD	1595	40	55	08.85-12.96	■
1.6 D (B/C/404) (F8M 730)		Diesel	FWD	1595	40	55	08.85-12.96	■
THALIA II / SYMBOL (LU_) 09.08-					Saloon (Supermini car-B Segment)			
1.4 (K7J 700)		Gasolina	FWD	1390	55	75	09.08-06.14	■
1.2 LPG (D4F 728)		Gasol./Gas (LPG)	FWD	1149	55	75	01.10-12.13	■

LISTA DE APLICACIONES - BUYERS GUIDE

THALIA / SYMBOL (LB_) 02.98-					Saloon (Supermini car-B Segment)			
1.2 16V (D4F 706)		Gasolina	FWD	1149	55	75	04.02-	■
1.2 16V (D4F 712)		Gasolina	FWD	1149	55	75	04.02-	■
1.2 16V (D4F 728)		Gasolina	FWD	1149	55	75	04.02-	■
1.4 (K7J 700)	08/02-	Gasolina	FWD	1390	55	75	08.00-	■
1.4 (LB17) (K7J 700)		Gasolina	FWD	1390	72	98	05.00-02.09	■
1.4 16V (K4J 712)		Gasolina	FWD	1390	72	98	08.00-	■
1.6 (K4M 736)		Gasolina	FWD	1598	82	112	01.04-12.08	■
1.6 Authentique Hi-Flex (LB26, LB3E) (K4M 742)		Gasol./Etanol	FWD	1598	86	115	11.04-02.09	■
1.6 Authentique Hi-Flex (LB26, LB3E) (K4M 743)		Gasol./Etanol	FWD	1598	86	115	11.04-02.09	■
1.5 dCi (K9K 740)		Diesel	FWD	1461	47	64	06.05-	■
1.5 dCi (K9K 700)		Diesel	FWD	1461	48	65	04.02-	■
1.5 dCi (K9K 700)		Diesel	FWD	1461	50	68	02.03-	■
1.5 dCi (K9K 714)		Diesel	FWD	1461	50	68	02.03-	■
1.5 dCi (K9K 706)		Diesel	FWD	1461	58	79	04.04-11.09	■
1.5 dCi (K9K 718)		Diesel	FWD	1461	62	84	06.01-02.09	■
1.9 D (F8Q 630)		Diesel	FWD	1870	48	65	02.98-05.01	■
THALIA III / SYMBOL (L8_) 12.13-					Saloon (Supermini car-B Segment)			
1.2 16V (D4F 732)		Gasolina	FWD	1149	55	75	12.13-	■
1.2 LPG		Gasol./Gas (LPG)	FWD	1149	55	75	03.14-	■
TWINGO (S06_) 03.93-06.12					Hatchback Van (LCVs-N1 Segment)			
1.2 (S066, S068) (D7F 700)	-09/00	Gasolina	FWD	1149	43	58	05.96-08.04	■
1.2 (S066, S068) (D7F 701)	-09/00	Gasolina	FWD	1149	43	58	05.96-08.04	■
1.2 (S066, S068) (D7F 702)	-09/00	Gasolina	FWD	1149	43	58	05.96-08.04	■
1.2 (S066, S068) (D7F 703)	-09/00	Gasolina	FWD	1149	43	58	05.96-08.04	■
1.2 (S066, S068) (D7F 704)	-09/00	Gasolina	FWD	1149	43	58	05.96-08.04	■
1.2 (S066, S068) (D7F 706)	-09/00	Gasolina	FWD	1149	43	58	05.96-08.04	■
1.2	-09/00	Gasolina	FWD	1149	44	60	03.97-08.03	■
1.2 (D4F 702)		Gasolina	FWD	1149	55	75	01.01-06.12	■
1.2 (S063, S064) (C3G 700)		Gasolina	FWD	1239	40	55	03.93-05.96	■
1.2 (S063, S064) (C3G 702)		Gasolina	FWD	1239	40	55	03.93-05.96	■
TWINGO (C06_) 03.93-10.12					Hatchback (City car-A Segment)			
1.0 (D7D 740)		Gasolina	FWD	999	43	59	01.00-12.02	■
1.2 (C067) (D7F 700)	-09/00	Gasolina	FWD	1149	40	54	05.96-03.07	■
1.2 (C067) (D7F 701)	-09/00	Gasolina	FWD	1149	40	54	05.96-03.07	■
1.2 (C066, C068) (D7F 700)	-09/00	Gasolina	FWD	1149	43	58	05.96-06.07	■
1.2 (C066, C068) (D7F 701)	-09/00	Gasolina	FWD	1149	43	58	05.96-06.07	■
1.2 (C066, C068) (D7F 702)	-09/00	Gasolina	FWD	1149	43	58	05.96-06.07	■
1.2 (C066, C068) (D7F 703)	-09/00	Gasolina	FWD	1149	43	58	05.96-06.07	■
1.2 (C066, C068) (D7F 704)	-09/00	Gasolina	FWD	1149	43	58	05.96-06.07	■
1.2		Gasolina	FWD	1149	44	60	09.98-08.00	■
1.2 (C063, C064) (C3G 700)		Gasolina	FWD	1239	40	55	03.93-10.96	■
1.2 (C063, C064) (C3G 702)		Gasolina	FWD	1239	40	55	03.93-10.96	■
1.2 LPG (D7F 702)		Gasol./Gas (LPG)	FWD	1149	44	60	10.03-06.07	■
1.2 LPG (D7F 708)		Gasol./Gas (LPG)	FWD	1149	44	60	10.03-06.07	■