

# LISTA DE APLICACIONES - BUYERS GUIDE

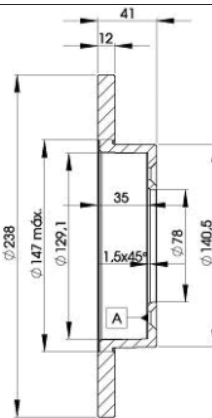
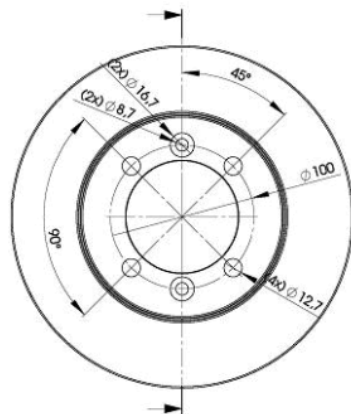
## 78BD4706-2



8 424073 146304

Weight: 7.080

O.E.M.	MAKE
77 00 677 045	RENAULT
77 01 467 115	RENAULT



## 78BD4706-2



Ø238x12x41

MAKE
DACIA
LADA
RENAULT



Trac.	CC	Kw	CV		
					Front / Rear

### DACIA

1410 06.94-12.98						Estate (Compact car-C Segment)			
1.4 (102-00)		Gasolina	FWD	1397	48	65	06.94-12.98	■	
LOGAN (LS_) 08.04-						Saloon (Compact car-C Segment)			
1.6 LPG (K7M 718)		Gasol./Gas (LPG)	FWD	1598	64	87	08.04-03.11	■	
1.0 Hi-Flex (LS0R, LS1G) (D4D 760)		Gasol./Etanol	FWD	999	56	76	01.11-10.12	■	
1.6 16V Flexifuel (K4M 696)		Gasol./Etanol	FWD	1598	77	105	07.10-	■	
NOVA 04.96-03.03						Hatchback (Supermini car-B Segment)			
1.4 (C2J)		Gasolina	FWD	1397	48	65	04.96-03.01	■	
1.6		Gasolina	FWD	1557	53	72	04.96-03.03	■	
SANDERO (B90) 06.08-						Hatchback (Compact car-C Segment)			
1.6 16V (K4M 690)		Gasolina	FWD	1598	77	105	07.11-	■	
1.6 16V (K4M 694)		Gasolina	FWD	1598	77	105	07.11-	■	
1.4 MPI LPG (K7J 714)		Gasol./Gas (LPG)	FWD	1390	53	72	01.09-	■	
1.6 LPG (BS03) (K7M 818)		Gasol./Gas (LPG)	FWD	1598	60	82	01.11-12.12	■	
1.6 LPG (K7M 818)		Gasol./Gas (LPG)	FWD	1598	62	84	05.10-10.12	■	
1.6 LPG (K7M 718)		Gasol./Gas (LPG)	FWD	1598	64	87	06.08-12.12	■	
1.0 Hi-Flex (D4D 760)		Gasol./Etanol	FWD	999	56	76	01.11-12.12	■	
1.6 Hi-Flex (BS1H) (K7M 732)		Gasol./Etanol	FWD	1598	64	87	06.08-12.12	■	

# LISTA DE APLICACIONES - BUYERS GUIDE

1.5 dCi (K9K 790)		Diesel	FWD	1461	48	65	11.08-	■
1.5 dCi (K9K 796)		Diesel	FWD	1461	63	86	11.08-	■
<b>LADA</b>								
<b>LARGUS (KS0_, RS0_, KSA_) 03.12-</b>					<b>Estate Van (Compact car-C Segment)</b>			
1.6 (KS035, RS035) (11189)		Gasolina	FWD	1597	64	87	06.16-	■
1.6 (KS0Y5, RS0Y5) (K7M)		Gasolina	FWD	1598	62	84	03.12-	■
1.6 (KS0Y5, RS0Y5) (K4M)		Gasolina	FWD	1598	77	105	03.12-	■
<b>RENAULT</b>								
<b>CLIO II (BB_, CB_) 03.98-</b>					<b>Hatchback (Supermini car-B Segment)</b>			
1.2 LPG (D7F 764)		Gasol./Gas (LPG)	FWD	1149	43	58	09.98-06.09	■
1.2 LPG (D7F 766)		Gasol./Gas (LPG)	FWD	1149	43	58	09.98-06.09	■
1.6 Flex (K4M 740)		Gasol./Etanol	FWD	1598	81	110	05.00-12.06	■
1.6 Flex (K4M 748)		Gasol./Etanol	FWD	1598	81	110	05.00-12.06	■
<b>EXPRESS 07.95-03.98</b>					<b>Box Body/MPV (LCVs-N1 Segment)</b>			
1.9 D		Diesel	FWD	1870	47	64	07.95-03.98	■
<b>EXPRESS 07.95-10.99</b>					<b>Pickup (LCVs-N1 Segment)</b>			
1.2 (C3G 710)		Gasolina	FWD	1239	40	54	07.95-10.99	■
1.9 D (F8Q 640)		Diesel	FWD	1870	40	54	07.95-10.97	■
1.9 D (F8Q 724)		Diesel	FWD	1870	47	64	07.95-10.99	■
1.9 D (F8Q 776)		Diesel	FWD	1870	47	64	07.95-10.99	■
<b>LOGAN / TONDAR 90 (KS_) 04.07-</b>					<b>Estate (Compact car-C Segment)</b>			
1.4 (K7J 710)		Gasolina	FWD	1390	55	75	10.07-	■
1.6 (K7M 710)		Gasolina	FWD	1598	64	87	04.07-	■
1.6 (KS0L, KS0M, KS0P, KS1S) (K4M 690)		Gasolina	FWD	1598	77	105	04.07-	■
1.6 (KS0L, KS0M, KS0P, KS1S) (K4M 696)		Gasolina	FWD	1598	77	105	04.07-	■
1.6 (KS0L, KS0M, KS0P, KS1S) (K4M 697)		Gasolina	FWD	1598	77	105	04.07-	■
<b>LOGAN / TONDAR 90 (LS_) 09.04-</b>					<b>Saloon (Compact car-C Segment)</b>			
1.4 LPG (K7J 714)		Gasol./Gas (LPG)	FWD	1390	53	72	02.08-10.13	■
<b>MEGANE (BA0/1_) 08.95-12.04</b>					<b>Hatchback (Compact car-C Segment)</b>			
1.6 LPG (K7M 702)		Gasol./Gas (LPG)	FWD	1598	66	90	08.95-03.99	■
<b>R 11 / ENCORE (B/C37_) 03.83-09.95</b>					<b>Hatchback (Compact car-C Segment)</b>			
1.4 (C2J 720)		Gasolina	FWD	1397	43	58	07.86-10.87	■
<b>R 19 (B/C53_) 01.88-09.94</b>					<b>Hatchback (Compact car-C Segment)</b>			
1.4 (E7J 700)		Gasolina	FWD	1390	55	75	09.90-04.92	■
<b>R 19 (L53_) 01.88-12.92</b>					<b>Saloon (Compact car-C Segment)</b>			
1.4 (E6J 700)		Gasolina	FWD	1390	58	79	06.89-08.90	■
<b>R 19 II (B/C53_) 01.91-06.01</b>					<b>Hatchback (Compact car-C Segment)</b>			
1.4 (E6J 700)		Gasolina	FWD	1390	57	78	05.93-12.98	■
1.4 (E6J 706)		Gasolina	FWD	1390	60	82	10.96-06.01	■
1.9 D		Diesel	FWD	1870	75	102	07.98-06.01	■
<b>R 9 / ALLIANCE (L42_) 09.81-02.97</b>					<b>Saloon (Compact car-C Segment)</b>			
1.1 (L421) (C1E 715)	-08/83	Gasolina	FWD	1108	35	48	09.81-05.87	■
1.1 (L421) (C1E 720)	-08/83	Gasolina	FWD	1108	35	48	09.81-05.87	■

# LISTA DE APLICACIONES - BUYERS GUIDE

1.4 (L422, L42C) (C1J 715)	-08/83	Gasolina	FWD	1397	44	60	12.81-12.88	■
1.4 (L422, L42C) (C1J 792)	-08/83	Gasolina	FWD	1397	44	60	12.81-12.88	■
1.4 (L422, L42C) (C1J 796)	-08/83	Gasolina	FWD	1397	44	60	12.81-12.88	■
1.4 (L422, L42C) (C2J 730)	-08/83	Gasolina	FWD	1397	44	60	12.81-12.88	■
1.4 Automatik (L423) (C2J 718)	-08/83	Gasolina	FWD	1397	50	68	09.81-12.85	■
1.4 Automatik (L423) (C2J 757)	-08/83	Gasolina	FWD	1397	50	68	09.81-12.85	■
1.4 (L423) (C2J 717)	-08/83	Gasolina	FWD	1397	53	72	09.81-12.85	■
1.4 (L423) (C2J 755)	-08/83	Gasolina	FWD	1397	53	72	09.81-12.85	■
<b>RAPID / EXTRA / EXPRESS (F40_, G40_) 07.85-11.01</b>					<b>Box Body/MPV (LCVs-N1 Segment)</b>			
Electric (2BD 700)		Eléctrico	FWD		21	29	01.94-11.98	■
<b>SANDERO II /STEPWAY II (B8_) 11.13-</b>					<b>Hatchback (Compact car-C Segment)</b>			
1.6		Gasolina	FWD	1598	60	82	11.13-	■
<b>SANDERO/STEPWAY (BS_) 11.07-</b>					<b>Hatchback (Compact car-C Segment)</b>			
1.4 (K7J 710)		Gasolina	FWD	1390	55	75	02.09-	■
1.6 (K7M 718)		Gasolina	FWD	1598	62	84	11.10-	■
1.6 (BS0H, BS0F) (K7M 710)		Gasolina	FWD	1598	64	87	02.09-	■
1.6		Gasolina	FWD	1598	66	90	05.09-	■
1.6 (K7M 710)		Gasolina	FWD	1598	75	102	12.07-	■
1.6 (K4M 697)		Gasolina	FWD	1598	76	103	12.07-07.13	■
1.6 (K4M 690)		Gasolina	FWD	1598	77	105	12.12-	■
1.6 (BS0V, BS1V)		Gasolina	FWD	1598	82	112	09.09-	■
1.4 LPG (K7J 714)		Gasol./Gas (LPG)	FWD	1390	53	72	02.09-	■
1.6 Flex		Gasol./Etanol	FWD	1598	77	105	12.12-	■
1.6 Flex (BS0V, BS1V, BS09)		Gasol./Etanol	FWD	1598	82	112	08.08-	■
<b>SUPER 5 (S40_) 10.84-12.96</b>					<b>Hatchback Van (LCVs-N1 Segment)</b>			
1.2 (C1G 702)		Gasolina	FWD	1237	40	54	07.87-06.89	■
<b>SUPER 5 (B/C40_) 10.84-12.96</b>					<b>Hatchback (Supermini car-B Segment)</b>			
1.4		Gasolina	FWD	1390	43	58	08.86-12.96	■
<b>THALIA II / SYMBOL (LU_) 09.08-</b>					<b>Saloon (Supermini car-B Segment)</b>			
1.4 (K7J 700)		Gasolina	FWD	1390	55	75	09.08-06.14	■
1.2 LPG (D4F 728)		Gasol./Gas (LPG)	FWD	1149	55	75	01.10-12.13	■
<b>THALIA / SYMBOL (LB_) 02.98-</b>					<b>Saloon (Supermini car-B Segment)</b>			
1.2 16V (D4F 706)		Gasolina	FWD	1149	55	75	04.02-	■
1.2 16V (D4F 712)		Gasolina	FWD	1149	55	75	04.02-	■
1.2 16V (D4F 728)		Gasolina	FWD	1149	55	75	04.02-	■
1.4 (LB17) (K7J 700)		Gasolina	FWD	1390	72	98	05.00-02.09	■
1.4 16V (K4J 712)		Gasolina	FWD	1390	72	98	08.00-	■
1.6 (K4M 736)		Gasolina	FWD	1598	82	112	01.04-12.08	■
1.6 Authentique Hi-Flex (LB26, LB3E) (K4M 742)		Gasol./Etanol	FWD	1598	86	115	11.04-02.09	■
1.6 Authentique Hi-Flex (LB26, LB3E) (K4M 743)		Gasol./Etanol	FWD	1598	86	115	11.04-02.09	■
1.5 dCi (K9K 740)		Diesel	FWD	1461	47	64	06.05-	■
1.5 dCi (K9K 700)		Diesel	FWD	1461	48	65	04.02-	■
1.5 dCi (K9K 700)		Diesel	FWD	1461	50	68	02.03-	■
1.5 dCi (K9K 714)		Diesel	FWD	1461	50	68	02.03-	■
1.5 dCi (K9K 706)		Diesel	FWD	1461	58	79	04.04-11.09	■

# LISTA DE APLICACIONES - BUYERS GUIDE

1.5 dCi (K9K 718)	Diesel	FWD	1461	62	84	06.01-02.09	■
1.9 D (F8Q 630)	Diesel	FWD	1870	48	65	02.98-05.01	■
<b>THALIA III / SYMBOL (L8_) 12.13-</b>				<b>Saloon (Supermini car-B Segment)</b>			
1.2 16V (D4F 732)	Gasolina	FWD	1149	55	75	12.13-	■
1.2 LPG	Gasol./Gas (LPG)	FWD	1149	55	75	03.14-	■
<b>TWINGO (S06_) 03.93-06.12</b>				<b>Hatchback Van (LCVs-N1 Segment)</b>			
1.2	Gasolina	FWD	1149	44	60	03.97-08.03	■
1.2 (D4F 702)	Gasolina	FWD	1149	55	75	01.01-06.12	■
<b>TWINGO (C06_) 03.93-10.12</b>				<b>Hatchback (City car-A Segment)</b>			
1.0 (D7D 740)	Gasolina	FWD	999	43	59	01.00-12.02	■
1.2 LPG (D7F 702)	Gasol./Gas (LPG)	FWD	1149	44	60	10.03-06.07	■
1.2 LPG (D7F 708)	Gasol./Gas (LPG)	FWD	1149	44	60	10.03-06.07	■