

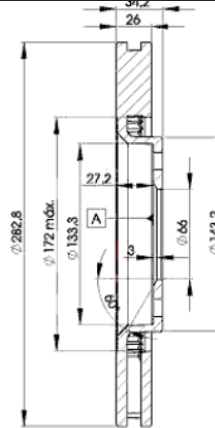
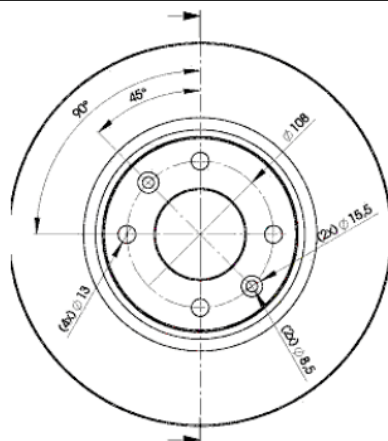
LISTA DE APLICACIONES - BUYERS GUIDE

78BD4752-2



Weight: 14.432

O.E.M.	MAKE
4246.17	PEUGEOT
4246.18	PEUGEOT
4246.W2	CITROËN
4246.W8	PEUGEOT
4249.17	PEUGEOT
4249.18	CITROËN
4249.84	CITROËN



78BD4752-2

E1 90R-02C0433/0054



Ø283x26x34.5

MAKE
CITROËN
DS
OPEL
PEUGEOT
VAUXHALL



Trac.	CC	Kw	CV		
					Front / Rear

CITROËN

(RE_) 09.04-01.08

Estate Van ()

1.8 16V (RE6FZB) (6FZ (EW7J4))	Gasolina	FWD	1749	85	116	09.04-08.05	■
2.0 16V (RERFJB, RERFJC) (RFJ (EW10A))	Gasolina	FWD	1997	103	140	11.04-01.08	■
1.6 HDi (RE9HYB, RE9HZB) (9HY (DV6TED4))	Diesel	FWD	1560	80	109	09.04-01.08	■
1.6 HDi (RE9HYB, RE9HZB) (9HZ (DV6TED4))	Diesel	FWD	1560	80	109	09.04-01.08	■

BERLINGO II (B9) 04.08-

Box Body/MPV (LCVs-N1 Segment)

PureTech 110 (HNZ (EB2DT))	Gasolina	FWD	1199	81	110	01.18-	■
Electric (Y4F1)	Eléctrico	FWD		35	48	01.13-	■
Electric (Y4F1)	Eléctrico	FWD		49	67	01.13-	■
1.6 HDi 75 (9HT (DV6BTED4))	Diesel	FWD	1560	55	75	04.08-	■
1.6 HDi 75 (9HT (DV6BUTED4))	Diesel	FWD	1560	55	75	04.08-	■
1.6 HDi 75 4x4 (9HN (DV6ETED))	Diesel	4WD	1560	55	75	02.12-	■
1.6 HDi 90 16V (9HS (DV6TED4BU))	Diesel	FWD	1560	66	90	04.08-	■
1.6 HDi 90 16V (9HX (DV6AUTED4))	Diesel	FWD	1560	66	90	04.08-	■

BERLINGO II (B9) 04.08-

Platform/Chassis (LCVs-N1 Segment)

1.6 HDi 90 (9HF (DV6DTED))	Diesel	FWD	1560	66	90	07.10-	■
1.6 HDi 92 (9HJ (DV6DTEDM))	Diesel	FWD	1560	68	92	07.10-12.17	■

BERLINGO II MULTISPACE (B9) 04.08-

MPV (Large MPV-M1 Segment)

1.6 (NFU (TU5JP4))	vehicles with ESP	Gasolina	FWD	1587	80	109	04.08-	■
Electric (Y4F1)		Eléctrico	FWD		49	67	09.17-	■
1.6 HDi 75 16V (9HT (DV6BTED4))		Diesel	FWD	1560	55	75	04.08-	■
1.6 HDi 90 (9HV (DV6TED4B))		Diesel	FWD	1560	66	90	04.08-	■
1.6 HDi 90 (9HX (DV6ATED4))		Diesel	FWD	1560	66	90	04.08-	■

LISTA DE APLICACIONES - BUYERS GUIDE

1.6 HDi 110 (9HZ (DV6TED4))		Diesel	FWD	1560	80	109	04.08-	■
BERLINGO / BERLINGO FIRST (M_) 07.96-12.11					Box Body/MPV (LCVs-N1 Segment)			
1.1 i (MAHDZ, MBHDZ, MBHFX) (HDZ (TU1M))	10/02-, vehicles with ESP	Gasolina	FWD	1124	44	60	07.96-03.08	■
1.1 i (MAHDZ, MBHDZ, MBHFX) (HFX (TU1JP))	10/02-, vehicles with ESP	Gasolina	FWD	1124	44	60	07.96-03.08	■
1.4 CNG		Gasolina	FWD	1360	48	65	11.02-03.08	■
1.4 i (MBKFX, MBKFW) (KFW (TU3A))	10/02-, vehicles with ESP	Gasolina	FWD	1360	55	75	07.96-12.11	■
1.4 i (MBKFX, MBKFW) (KFW (TU3JP))	10/02-, vehicles with ESP	Gasolina	FWD	1360	55	75	07.96-12.11	■
1.4 i (MBKFX, MBKFW) (KFX (TU3JP))	10/02-, vehicles with ESP	Gasolina	FWD	1360	55	75	07.96-12.11	■
1.6 16V (MBNFU) (NFU (TU5JP4))	10/02-, vehicles with ESP	Gasolina	FWD	1587	80	109	10.00-03.08	■
1.6 16V (NFU (TU5JP4))		Gasolina	FWD	1587	81	110	08.05-12.07	■
1.4 bivalent (KFW (TU3JP))	vehicles with ESP	Gasol./Gas (CNG)	FWD	1360	48	65	11.02-12.11	■
1.4 i bivalent (MBKFW) (KFW (TU3JP))	vehicles with ESP	Gasol./Gas (CNG)	FWD	1360	55	75	04.03-10.05	■
Electric	vehicles with ESP	Eléctrico	FWD		28	38	07.03-12.05	■
1.6 HDi 75 (MB9HW) (9HW (DV6BTED4))	vehicles with ESP	Diesel	FWD	1560	55	75	07.05-12.11	■
1.6 HDi 75 (MB9HW) (DV6B)	vehicles with ESP	Diesel	FWD	1560	55	75	07.05-12.11	■
1.6 HDi 90 (MB9HX, MC9HX) (9HX (DV6ATED4))	vehicles with ESP	Diesel	FWD	1560	66	90	07.05-12.11	■
1.6 HDi 92 (9HJ (DV6DTEDM))		Diesel	FWD	1560	68	92	11.09-12.10	■
1.6 HDi 92 (9HP (DV6DTE))		Diesel	FWD	1560	68	92	11.09-12.10	■
1.8 D (MBA9A, MCA9A) (A9A (XUD7))	vehicles with ESP	Diesel	FWD	1769	43	59	07.96-10.02	■
1.9 D 70 (MBWJZ, MCWJZ) (WJY (DW8B))	10/02-, vehicles with ESP	Diesel	FWD	1868	51	69	04.99-12.11	■
1.9 D 70 (MBWJZ, MCWJZ) (WJZ (DW8))	10/02-, vehicles with ESP	Diesel	FWD	1868	51	69	04.99-12.11	■
1.9 D 70 4WD (MBWJZ, MCWJZ) (WJY (DW8B))	10/02-, vehicles with ESP	Diesel	4WD	1868	51	69	07.98-03.06	■
1.9 D 70 4WD (MBWJZ, MCWJZ) (WJZ (DW8))	10/02-, vehicles with ESP	Diesel	4WD	1868	51	69	07.98-03.06	■
1.9 D (MBDJY) (DJY (XUD9A))	10/02-, vehicles with ESP	Diesel	FWD	1905	51	70	07.96-12.03	■
2.0 HDi 90 (MBRHY, MCRHY) (RHY (DW10TD))	10/02-, vehicles with ESP	Diesel	FWD	1997	66	90	12.99-12.11	■
2.0 HDi 90 4WD (MBRHY, MCRHY) (RHY (DW10TD))	10/02-, vehicles with ESP	Diesel	4WD	1997	66	90	11.00-10.05	■
BERLINGO / BERLINGO FIRST (MF_, GJK_, GFK_) 07.96-12.11					MPV (Large MPV-M1 Segment)			
1.1 i (MFHDZ, MFHFX) (HDZ (TU1M))	10/02-, vehicles with ESP	Gasolina	FWD	1124	44	60	07.96-05.08	■
1.1 i (MFHDZ, MFHFX) (HFX (TU1JP))	10/02-, vehicles with ESP	Gasolina	FWD	1124	44	60	07.96-05.08	■
1.4 GNC	vehicles with ESP	Gasolina	FWD	1360	48	65	11.02-	■
1.4 (KFW (TU3JP))	vehicles with ESP	Gasolina	FWD	1360	53	72	11.02-10.05	■
1.4 bivalent		Gasolina	FWD	1360	53	72	11.02-10.05	■
1.4 i (MFKFX, MFKFW, GJKFWB, GJKFWC, GFKFWC) (KFW (TU3JP))	10/02-, vehicles with ESP	Gasolina	FWD	1360	55	75	07.96-12.11	■
1.4 i (MFKFX, MFKFW, GJKFWB, GJKFWC, GFKFWC) (KFX (TU3JP))	10/02-, vehicles with ESP	Gasolina	FWD	1360	55	75	07.96-12.11	■
1.6 16V (MFNFU) (NFU (TU5JP4))	10/02-, vehicles with ESP	Gasolina	FWD	1587	80	109	10.00-12.11	■
1.6 16V (MFNFU) (NFU (TU5JP4))	vehicles with ESP	Gasolina	FWD	1587	81	110	11.02-10.08	■
1.8 i (MFLFX) (LFX (XU7JB))	vehicles with ESP	Gasolina	FWD	1761	66	90	05.97-10.02	■
1.8 i 4WD (MFLFX) (LFX (XU7JB))	vehicles with ESP	Gasolina	4WD	1761	66	90	04.97-10.01	■
1.4 bivalent (KFW (TU3JP))	vehicles with ESP	Gasol./Gas (CNG)	FWD	1360	48	65	11.02-12.11	■
1.4 i bivalent (MFKFW) (KFW (TU3JP))	vehicles with ESP	Gasol./Gas (CNG)	FWD	1360	55	75	04.03-10.08	■
1.4 Hybrid	vehicles with ESP	Gasol./el éc.	FWD	1360	54	73	05.05-	■
electrique	vehicles with ESP	Eléctrico	FWD		16	22	01.00-10.02	■
Electric	vehicles with ESP	Eléctrico	FWD		28	38	01.98-12.05	■

LISTA DE APLICACIONES - BUYERS GUIDE

1.6 HDI 75 (MF9HW, GJ9HWC, GF9HWC, GN9HWC) (9HW (DV6BTED4))	vehicles with ESP	Diesel	FWD	1560	55	75	07.05-12.11	■
1.6 HDI 75 (MF9HW, GJ9HWC, GF9HWC, GN9HWC) (DV6B)	vehicles with ESP	Diesel	FWD	1560	55	75	07.05-12.11	■
1.6 HDI 90 (MF9HX) (9HX (DV6ATED4))	vehicles with ESP	Diesel	FWD	1560	66	90	07.05-05.08	■
1.6 HDI 92 (9HJ (DV6DTEDM))		Diesel	FWD	1560	68	92	11.09-12.10	■
1.6 HDI 92 (9HP (DV6DTED))		Diesel	FWD	1560	68	92	11.09-12.10	■
1.6 HDi 110	vehicles with ESP	Diesel	RWD	1560	80	109	08.05-12.11	■
1.8 D (MFA9A) (A9A (XUD7))	vehicles with ESP	Diesel	FWD	1769	43	58	07.98-10.02	■
1.9 D (MFWJZ) (WJY (DW8B))	10/02-, vehicles with ESP	Diesel	FWD	1868	51	70	07.98-10.05	■
1.9 D (MFWJZ) (WJZ (DW8))	10/02-, vehicles with ESP	Diesel	FWD	1868	51	70	07.98-10.05	■
1.9 D 4WD (MFWJZ) (WJY (DW8B))	10/02-, vehicles with ESP	Diesel	4WD	1868	51	69	07.98-10.05	■
1.9 D 4WD (MFWJZ) (WJZ (DW8))	10/02-, vehicles with ESP	Diesel	4WD	1868	51	69	07.98-10.05	■
1.9 D (MFDJY) (D9B (XUD9A/L))	10/02-, vehicles with ESP	Diesel	FWD	1905	50	68	07.96-12.03	■
1.9 D (MFDJY) (DJY (XUD9A))	10/02-, vehicles with ESP	Diesel	FWD	1905	50	68	07.96-12.03	■
2.0 HDi 4x4 (MFRHY) (RHY (DW10TD))	vehicles with ESP	Diesel	4WD	1997	66	90	11.02-10.05	■
2.0 HDI 90 (MFRHY) (RHY (DW10TD))	10/02-, vehicles with ESP	Diesel	FWD	1997	66	90	12.99-10.05	■
C3 (FC_, FN_) 02.02-					Hatchback (Supermini car-B Segment)			
1.6 BioFlex (NFU (TU5JP4))		Gasol./Etanol	FWD	1587	83	113	06.05-12.13	■
C3 AIRCROSS 08.10-					MPV (Mini SUV-J Segment)			
1.5		Gasolina	FWD	1449	66	90	11.15-	■
C3 II (SC_) 06.10-					Hatchback Van (Supermini car-B Segment)			
1.4 HDi (8HR (DV4C))		Diesel	FWD	1398	50	68	06.10-09.16	■
1.6 BlueHDi (BHW (DV6FE))		Diesel	FWD	1560	55	75	03.15-09.16	■
C3 II (SC_) 09.09-					Hatchback (Supermini car-B Segment)			
1.0 VTi 68 (ZMZ (EB0))		Gasolina	FWD	999	50	68	08.12-09.16	■
1.2 VTI 82 (HMZ (EB2))		Gasolina	FWD	1199	60	82	06.12-09.16	■
1.2 VTI 82 (HMZ (EB2F))		Gasolina	FWD	1199	60	82	06.12-09.16	■
1.2 THP 110 (HNZ (EB2DT))		Gasolina	FWD	1199	81	110	10.14-09.16	■
1.4 VTi (8FR (EP3))		Gasolina	FWD	1397	72	98	11.09-09.16	■
1.5		Gasolina	FWD	1449	66	90	08.12-09.16	■
1.6 VTi		Gasolina	FWD	1587	85	116	11.13-	■
1.4 LPG (KFT (TU3A))		Gasol./Gas (LPG)	FWD	1360	54	73	07.10-09.16	■
1.4 LPG (8FN (EP3))		Gasol./Gas (LPG)	FWD	1397	70	95	06.13-09.16	■
1.2 PureTech Flex		Gasol./Etanol	FWD	1199	66	90	06.16-06.21	■
1.5 Flex		Gasol./Etanol	FWD	1449	68	92	08.12-12.16	■
1.6 VTi Flex (EC5)		Gasol./Etanol	FWD	1587	87	118	10.16-06.21	■
1.6 VTi 120 Flex (EC5)		Gasol./Etanol	FWD	1587	90	122	07.12-09.16	■
1.4 HDi 70 (SC8HZC, SC8HR0, SC8HP4) (8HR (DV4C))		Diesel	FWD	1398	50	68	11.09-09.16	■
1.4 HDi 70 (SC8HZC, SC8HR0, SC8HP4) (8HZ (DV4TD))		Diesel	FWD	1398	50	68	11.09-09.16	■
1.6 BlueHDi 75 (9HK (DV6ETEDM))		Diesel	FWD	1560	55	75	04.15-09.16	■
1.6 BlueHDi 75 (BHW (DV6FE))		Diesel	FWD	1560	55	75	04.15-09.16	■
1.6 HDi 90 (9HX (DV6ATED4))		Diesel	FWD	1560	66	90	11.09-09.16	■
1.6 HDi (9HJ (DV6DTEDM))		Diesel	FWD	1560	68	92	11.09-09.16	■
1.6 HDi (9HP (DV6DTED))		Diesel	FWD	1560	68	92	11.09-09.16	■
1.6 BlueHDi 100 (BHY (DV6FD))		Diesel	FWD	1560	73	99	07.14-09.16	■

LISTA DE APLICACIONES - BUYERS GUIDE

1.6 HDi 110 (9HR (DV6C))		Diesel	FWD	1560	82	112	11.09-09.16	■
1.6 HDi 115 (9HD (DV6C))		Diesel	FWD	1560	84	114	09.12-09.16	■
C3 II Picasso (SH_) 12.08-					MPV (Mini MPV-M1 Segment)			
1.2 THP 110 (SHHNZ6) (HNZ (EB2DT))		Gasolina	FWD	1199	81	110	01.15-12.15	■
1.6 Flex		Gasolina	FWD	1587	81	110	05.11-	■
1.6 VTi 115 (SH5FP0, SH5FP8) (5FP (EP6))		Gasolina	FWD	1598	84	114	07.09-12.15	■
1.6 VTi 120 (5FS (EP6C))		Gasolina	FWD	1598	88	120	02.09-07.15	■
1.6 VTi 120 (5FW (EP6))		Gasolina	FWD	1598	88	120	02.09-07.15	■
1.6 HDi 90 (9HP (DV6DTED))		Diesel	FWD	1560	68	92	07.10-03.15	■
1.6 BlueHDi 100 (BHY (DV6FD))		Diesel	FWD	1560	73	99	01.15-08.17	■
1.6 HDi (9HZ (DV6TED4))		Diesel	FWD	1560	80	109	02.09-12.10	■
1.6 HDi 110 (9HR (DV6C))		Diesel	FWD	1560	82	112	05.10-02.13	■
1.6 HDi 115 (9HD (DV6C))		Diesel	FWD	1560	84	114	01.13-03.15	■
C3 III (SX) 07.16-					Hatchback (Supermini car-B Segment)			
1.2 PureTech 82		Gasolina	FWD	1199	60	82	03.21-	■
1.2 PureTech 110		Gasolina	FWD	1199	81	110	03.21-	■
1.2 VTi 82 LPG (HMZ (EB2F))		Gasol./Gas (LPG)	FWD	1199	60	82	07.16-	■
1.2 PureTech 82 LPG (HMR (EB2FA))		Gasol./Gas (LPG)	FWD	1199	61	83	05.18-	■
1.0 Flex		Gasol./Etanol	FWD	999	55	75	06.22-	■
1.6 Flex		Gasol./Etanol	FWD	1587	88	120	06.22-	■
C3 III AIRCROSS II (2R_, 2C_) 06.17-					SUV (Mini SUV-J Segment)			
1.2 PureTech 82 (2RHMRC, 2RHMZB) (HMR (EB2FA))		Gasolina	FWD	1199	60	82	06.17-	■
1.2 PureTech 82 (2RHMRC, 2RHMZB) (HMZ (EB2F))		Gasolina	FWD	1199	60	82	06.17-	■
1.2 PureTech 110 (2RHNZB, 2RHNZW, 2RHNPX, 2RHNPJ) (HNP (EB2ADT))		Gasolina	FWD	1199	81	110	06.17-	■
1.2 PureTech 110 (2RHNZB, 2RHNZW, 2RHNPX, 2RHNPJ) (HNV (EB2DTM))		Gasolina	FWD	1199	81	110	06.17-	■
1.2 PureTech 110 (2RHNZB, 2RHNZW, 2RHNPX, 2RHNPJ) (HNZ (EB2DT))		Gasolina	FWD	1199	81	110	06.17-	■
1.2 PureTech 130 (2RHNYH) (HNS (EB2ADTS))		Gasolina	FWD	1199	96	131	07.17-	■
1.2 PureTech 130 (2RHNYH) (HNY (EB2DTS))		Gasolina	FWD	1199	96	131	07.17-	■
1.5 BlueHDi 100 (2CYHYJ) (YHY (DV5RD))		Diesel	FWD	1499	73	99	08.18-	■
1.5 BlueHDi 100 (2CYHYJ) (YHY (DV5RD))		Diesel	FWD	1499	75	102	08.18-	■
1.5 BlueHDi 110 (YHS (DV5RCE))		Diesel	FWD	1499	81	110	10.20-	■
1.5 BlueHDi 120 (2CYHXX) (YHX (DV5RC))		Diesel	FWD	1499	88	120	08.18-	■
1.6 HDi 92 (2C9HPA) (9HP (DV6D))		Diesel	FWD	1560	68	92	10.17-	■
1.6 HDi 92 (2C9HPA) (9HP (DV6DTED))		Diesel	FWD	1560	68	92	10.17-	■
1.6 BlueHDi 100 (2CBHYB) (BHY (DV6FD))		Diesel	FWD	1560	73	99	07.17-08.18	■
1.6 BlueHDi 115 (2CBHXH) (BHX (DV6FC))		Diesel	FWD	1560	85	115	06.17-05.18	■
1.6 BlueHDi 120 (2CBHZH) (BHZ (DV6FC))		Diesel	FWD	1560	88	120	07.17-05.18	■
C3 III AIRCROSS II Van (2C_, 2R_) 06.17-					SUV Van (Mini SUV-J Segment)			
PureTech 82 (HMZ (EB2F))		Gasolina	FWD	1199	60	82	05.19-	■
PureTech 82 (HNZ (EB2DT))		Gasolina	FWD	1199	81	110	05.19-	■
1.5 BlueHDi 100 (YHY (DV5RD))		Diesel	FWD	1499	73	99	05.19-	■
1.5 BlueHDi 120 (YHX (DV5RC))		Diesel	FWD	1499	88	120	05.19-	■
1.6 BlueHDi 100 (BHY (DV6FD))		Diesel	FWD	1560	73	99	05.19-	■
C4 (LA_) 11.04-12.13					Coupe (Compact car-C Segment)			
1.4 16V (KFU (ET3J4))	vehicles with ESP	Gasolina	FWD	1360	65	88	11.04-07.11	■

LISTA DE APLICACIONES - BUYERS GUIDE

1.6 16V (NFU (TU5JP4))	vehicles with ESP	Gasolina	FWD	1587	80	109	11.04-07.11	■
1.6 VTI 120 (5FW (EP6))	Automatic Transmiss.	Gasolina	FWD	1598	88	120	07.08-07.11	■
1.6 THP (5FT (EP6DT))		Gasolina	FWD	1598	103	140	06.08-07.11	■
1.6 THP 150 (5FX (EP6DT))		Gasolina	FWD	1598	110	150	07.08-07.11	■
2.0 16V (RFN (EW10J4))		Gasolina	FWD	1997	100	136	11.04-07.07	■
2.0 VTR (RFJ (EW10A))		Gasolina	FWD	1997	103	140	10.06-12.07	■
2.0 16V (RFK (EW10J4S))		Gasolina	FWD	1997	130	177	11.04-12.10	■
1.6 HDi (9HX (DV6ATED4))	vehicles with ESP	Diesel	FWD	1560	66	90	11.04-07.11	■
1.6 HDi (9HY (DV6TED4))	vehicles with ESP	Diesel	FWD	1560	80	109	11.04-07.11	■
1.6 HDi (9HZ (DV6TED4))	vehicles with ESP	Diesel	FWD	1560	80	109	11.04-07.11	■
C4 (LC_) 11.04-12.14					Hatchback (Compact car-C Segment)			
1.4 16V (KFU (ET3J4))	vehicles with ESP	Gasolina	FWD	1360	65	88	11.04-07.11	■
1.6 16V (NFU (TU5JP4))	vehicles with ESP	Gasolina	FWD	1587	80	109	11.04-07.11	■
1.6 VTI 120 (5FW (EP6))	Automatic Transmiss.	Gasolina	FWD	1598	88	120	07.08-07.11	■
1.6 THP 140 (5FT (EP6DT))		Gasolina	FWD	1598	103	140	07.08-07.11	■
1.6 THP 150 (5FX (EP6DT))		Gasolina	FWD	1598	110	150	07.08-07.11	■
2.0 16V (RFN (EW10J4))		Gasolina	FWD	1997	100	136	11.04-07.07	■
2.0 16V (RFJ (EW10A))		Gasolina	FWD	1997	103	140	11.04-07.11	■
2.0 16V (RFJ (EW10A))		Gasolina	FWD	1997	105	143	09.06-07.09	■
2.0 16V (RFK (EW10J4S))		Gasolina	FWD	1997	130	177	11.04-07.08	■
1.6 16V Bio-Flex (NFU (TU5JP4))	vehicles with ESP	Gasol./Etanol	FWD	1587	80	109	09.07-07.08	■
1.6 Flex		Gasol./Etanol	FWD	1587	81	110	02.09-07.11	■
1.6 HDi (9HX (DV6ATED4))	vehicles with ESP	Diesel	FWD	1560	66	90	11.04-07.11	■
1.6 HDi (9HY (DV6TED4))	vehicles with ESP	Diesel	FWD	1560	80	109	11.04-07.11	■
1.6 HDi (9HZ (DV6TED4))	vehicles with ESP	Diesel	FWD	1560	80	109	11.04-07.11	■
1.6 HDi		Diesel	FWD	1560	80	109	04.10-11.12	■
1.6 HDi		Diesel	FWD	1560	84	114	04.10-11.12	■
1.6 HDi		Diesel	FWD	1560	85	116	07.06-07.11	■
2.0 HDi (RHZ (DW10ATED))		Diesel	FWD	1997	81	110	04.07-07.08	■
C4 CACTUS 09.14-					Hatchback (Compact SUV-J Segment)			
1.2 PureTech 130 (HNS (EB2ADTS))		Gasolina	FWD	1199	96	131	11.17-	■
1.2 PureTech 130 (HNY (EB2DTS))		Gasolina	FWD	1199	96	131	11.17-	■
1.5 BlueHDI 100 (YHY (DV5RD))		Diesel	FWD	1499	73	99	06.18-	■
1.5 BlueHDI 100 (YHY (DV5RD))		Diesel	FWD	1499	75	102	06.18-	■
1.5 BlueHDI 120 (YHX (DV5RC))		Diesel	FWD	1499	88	120	09.18-	■
C4 CACTUS Van (0B_, 0P_) 09.14-					Hatchback Van (Compact car-C Segment)			
PureTech 82 (HMZ (EB2))		Gasolina	FWD	1199	60	82	05.19-	■
PureTech 110 (HNP (EB2ADT))		Gasolina	FWD	1199	81	110	05.19-	■
PureTech 110 (HNZ (EB2DT))		Gasolina	FWD	1199	81	110	05.19-	■
PureTech 130 (HNY (EB2DTS))		Gasolina	FWD	1199	96	131	05.19-	■
BlueHDI 100 (YHY (DV5RD))		Diesel	FWD	1499	73	99	05.19-	■
BlueHDI 100 (BHY (DV6FD))		Diesel	FWD	1560	73	99	05.19-	■
C4 II (NC_) 02.09-					Hatchback (Compact car-C Segment)			
1.2 THP 130 (NCHNYM, NCHNYT) (HNY (EB2DTS))		Gasolina	FWD	1199	96	130	04.14-12.17	■
1.6 (NCNFU0)		Gasolina	FWD	1587	81	110	01.10-	■
C4 / C4 PALLAS 07.06-					Saloon (Compact car-C Segment)			
1.6 16V (NFU (TU5JP4))		Gasolina	FWD	1587	80	109	07.06-07.11	■

LISTA DE APLICACIONES - BUYERS GUIDE

1.6		Gasolina	FWD	1587	81	110	03.11-11.14	■
2.0 16V		Gasolina	FWD	1997	101	138	06.07-11.14	■
2.0 16V (RFJ (EW10A))		Gasolina	FWD	1997	103	140	07.06-07.11	■
2.0 Exclusive 16V (RFJ (EW10A))		Gasolina	FWD	1997	105	143	07.07-11.14	■
1.6 HDi		Diesel	FWD	1560	80	109	04.10-11.12	■
1.6 HDi		Diesel	FWD	1560	84	114	04.10-11.12	■
1.6 HDi		Diesel	FWD	1560	85	116	07.06-08.13	■
C4 Grand Picasso (UA_) 10.06-					MPV (Large MPV-M1 Segment)			
1.6 VTI 120 (5FW (EP6))		Gasolina	FWD	1598	88	120	07.08-08.13	■
1.8 i 16V (6FY (EW7A))		Gasolina	FWD	1749	92	125	10.06-12.10	■
2.0 i 16V (RFJ (EW10A))		Gasolina	FWD	1997	103	140	10.06-08.13	■
1.8 i 16V Flex (6FY (EW7A))		Gasol./Etanol	FWD	1749	86	117	06.09-01.13	■
1.6 HDi (9HY (DV6TED4))		Diesel	FWD	1560	80	109	10.06-06.11	■
1.6 HDi (9HZ (DV6TED4))		Diesel	FWD	1560	80	109	10.06-06.11	■
1.8 i 16V CNG		CNG	FWD	1749	86	117	03.09-12.11	■
C4 Picasso (UD_) 10.06-12.15					MPV (Compact MPV-M1 Segment)			
1.8 i 16V (6FY (EW7A))		Gasolina	FWD	1749	92	125	02.07-12.11	■
2.0 i 16V (RFJ (EW10A))		Gasolina	FWD	1997	103	140	09.07-08.13	■
1.8 Bifuel (6FY (EW7A))		Gasol./Etanol	FWD	1749	92	125	01.09-10.12	■
1.6 HDi (9HY (DV6TED4))		Diesel	FWD	1560	80	109	02.07-08.13	■
1.6 HDi (9HZ (DV6TED4))		Diesel	FWD	1560	80	109	02.07-08.13	■
1.6 HDi 110 (9HR (DV6C))		Diesel	FWD	1560	82	112	09.10-08.13	■
C4 X (BD_, BE_, BF_) 09.22-					Hatchback (Compact car-C Segment)			
1.2 PureTech 100 (BDHNEA)		Gasolina	FWD	1199	74	101	09.22-	■
1.2 PureTech 130 (BDHNSB)		Gasolina	FWD	1199	96	131	09.22-	■
ẽ-C4 X (BFZKXC)		Eléctrico	FWD		100	136	09.22-	■
ẽ-C4 X		Eléctrico	FWD		115	156	07.23-	■
1.5 BlueHDi 130 (BEYHZB)		Diesel	FWD	1499	96	131	09.22-	■
C5 (DE_) 06.02-08.04					Estate Van (Large family car-D Segment)			
2.0 HDi (DERHYB) (RHY (DW10TD))		Diesel	FWD	1997	66	90	06.02-08.04	■
2.0 HDi (DERHSE, DERHSB) (RHS (DW10ATED))		Diesel	FWD	1997	79	107	06.02-08.04	■
2.0 HDi (DERHZB, DERHZE) (RHZ (DW10ATED))		Diesel	FWD	1997	80	109	06.02-08.04	■
C5 (DE_) 06.01-09.04					Estate (Large family car-D Segment)			
2.0 16V (DERFNF, DERFNC, RERFNC) (RFN (EW10J4))		Gasolina	FWD	1997	100	136	06.01-08.04	■
2.0 16V (RERFJB, RERFJC) (RFJ (EW10A))		Gasolina	FWD	1997	103	140	09.04-01.08	■
2.0 16V HPi (DERLZB) (RLZ (EW10D))		Gasolina	FWD	1997	103	140	06.01-08.04	■
2.0 HDi (DERHYB) (RHY (DW10TD))		Diesel	FWD	1997	66	90	06.01-08.04	■
2.0 HDi (DERHSB, DERHSE) (RHS (DW10ATED))		Diesel	FWD	1997	79	107	06.01-08.04	■
2.0 HDi (DERHZB, DERHZE) (RHZ (DW10ATED))		Diesel	FWD	1997	80	109	06.01-08.04	■
2.0 HDi (RERHRH) (RHR (DW10BTED4))		Diesel	FWD	1997	100	136	09.04-01.08	■
C5 (DC_) 03.01-03.05					Hatchback (Large family car-D Segment)			
2.0 16V (DCRFNC, DCRFNF) (RFN (EW10J4))		Gasolina	FWD	1997	100	136	03.01-08.04	■
2.0 16V (RCRFJB, RCRFJC) (RFJ (EW10A))		Gasolina	FWD	1997	103	140	09.04-08.08	■
2.0 16V HPi (DCRLZB) (RLZ (EW10D))		Gasolina	FWD	1997	103	140	03.01-08.04	■
2.0 16V		Gasolina	FWD	1997	105	143	03.05-11.07	■

LISTA DE APLICACIONES - BUYERS GUIDE

2.0 HDi (DCRHYB) (RHY (DW10TD))		Diesel	FWD	1997	66	90	03.01-08.04	■
2.0 HDi (RHS (DW10ATED))		Diesel	FWD	1997	79	107	03.01-08.04	■
2.0 HDi (RHZ (DW10ATED))		Diesel	FWD	1997	79	107	03.01-08.04	■
2.0 HDi (DCRHZB, DCRHZE) (RHZ (DW10ATED))		Diesel	FWD	1997	80	109	03.01-08.04	■
2.0 HDi (RCRHRH) (RHR (DW10BTED4))		Diesel	FWD	1997	100	136	09.04-01.08	■
C5 II (RW_) 02.08-					Estate (Large family car-D Segment)			
1.8 i 16V (RW6FYC) (6FY (EW7A))		Gasolina	FWD	1749	92	125	02.08-10.10	■
1.6 HDi 110 (RW9HZC) (9HZ (DV6TED4))		Diesel	FWD	1560	80	109	02.08-10.10	■
DS3 01.13-07.15					Convertible (Supermini car-B Segment)			
1.2 THP 110 (HNZ (EB2DT))		Gasolina	FWD	1199	81	110	10.14-07.15	■
1.6 THP 165 (5FM (EP6DT))		Gasolina	FWD	1598	120	163	02.15-07.15	■
1.6 THP 165 (5GZ (EP6FDT))		Gasolina	FWD	1598	121	165	10.14-07.15	■
1.6 BlueHDi 100 (BHY (DV6FD))		Diesel	FWD	1560	73	99	07.14-07.15	■
1.6 BlueHDi 100 (BHY (DV6FD))		Diesel	FWD	1560	75	102	07.14-07.15	■
1.6 BlueHDi 115 (BHX (DV6FC))		Diesel	FWD	1560	85	115	10.13-07.15	■
1.6 BlueHDi 120 (BHZ (DV6FC))		Diesel	FWD	1560	88	120	07.14-07.15	■
DS3 (SA_) 11.09-12.16					Hatchback (Supermini car-B Segment)			
1.2 THP 110 (HNZ (EB2DT))		Gasolina	FWD	1199	81	110	10.14-03.15	■
1.6 VTI 120 (5FS (EP6C))		Gasolina	FWD	1598	88	120	04.10-07.15	■
1.6 THP 150 (5FN (EP6CDT))		Gasolina	FWD	1598	110	150	01.10-07.15	■
1.6 THP 150 (5FX (EP6DT))		Gasolina	FWD	1598	110	150	01.10-07.15	■
1.6 THP 155 (5FR (EP6DT))		Gasolina	FWD	1598	115	156	04.10-07.15	■
1.6 THP 155 (5FV (EP6CDT))		Gasolina	FWD	1598	115	156	04.10-07.15	■
1.6 THP160 (5FM (EP6DT))		Gasolina	FWD	1598	120	163	01.12-07.15	■
1.6 THP 165 (5GZ (EP6FDT))		Gasolina	FWD	1598	121	165	10.14-06.15	■
1.6 BlueHDi 75 (BHW (DV6FE))		Diesel	FWD	1560	55	75	03.15-07.15	■
1.6 BlueHDi 100 (BHY (DV6FD))		Diesel	FWD	1560	73	99	07.14-07.15	■
DS4 (NX_) 03.11-07.15					Hatchback (Compact car-C Segment)			
1.2 THP 130 (HNY (EB2DTS))		Gasolina	FWD	1199	96	130	07.14-07.15	■
1.6 BlueHDi 115 (BHX (DV6FC))		Diesel	FWD	1560	85	115	07.14-07.15	■
DS5 09.11-12.16					Hatchback (Compact executive car-D Segment)			
1.6 BlueHDi 120 (BHZ (DV6FC))		Diesel	FWD	1560	88	120	07.14-07.15	■
XSARA (N0) 01.98-04.05					Coupe (Compact car-C Segment)			
2.0 16V (RFN (EW10J4))	01/02-	Gasolina	FWD	1997	100	136	09.00-03.05	■
2.0 i 16V (RFS (XU10J4RS))		Gasolina	FWD	1998	120	163	02.98-03.05	■
2.0 HDi 90 (RHY (DW10TD))	11/00-	Diesel	FWD	1997	66	90	02.99-03.05	■
2.0 HDi 109 (RHZ (DW10ATED))	01/02-	Diesel	FWD	1997	80	109	05.01-03.05	■
XSARA 05.98-08.05					Estate Van (Compact car-C Segment)			
1.4 (KFX (TU3JP))		Gasolina	FWD	1360	55	75	09.00-03.05	■
1.8 D (A9A (XUD7))		Diesel	FWD	1769	43	58	05.98-05.99	■
2.0 HDi (RHY (DW10TD))		Diesel	FWD	1997	66	90	09.00-03.05	■
XSARA (N2) 10.97-03.10					Estate (Compact car-C Segment)			
2.0 HDi 109 (RHZ (DW10ATED))	01/02-	Diesel	FWD	1997	80	109	05.01-08.05	■
XSARA (N3_) 05.98-03.05					Hatchback Van (Compact car-C Segment)			
2.0 HDi (RHY (DW10TD))		Diesel	FWD	1997	66	90	09.00-03.05	■

LISTA DE APLICACIONES - BUYERS GUIDE

XSARA (N1) 04.97-12.05					Hatchback (Compact car-C Segment)			
2.0 HDI 109 (RHZ (DW10ATED))	01/02-	Diesel	FWD	1997	80	109	05.01-03.05	■
XSARA PICASSO (N68) 09.99-06.12					MPV (Compact MPV-M1 Segment)			
1.6 16V (NFU (TU5JP4))		Gasolina	FWD	1587	81	110	06.05-09.06	■
2.0		Gasolina	FWD	1997	88	120	02.04-10.04	■
2.0 16V (RFN (EW10J4))		Gasolina	FWD	1997	101	138	12.99-11.11	■
1.6 16V LPG		Gasol./Gas (LPG)	FWD	1587	80	109	06.04-12.10	■
DS								
DS 3 (SB_) 07.15-					Convertible (City car-A Segment)			
1.2 VTI 82 (HMZ (EB2F))		Gasolina	FWD	1199	60	82	07.15-07.19	■
1.2 THP 110 (HNP (EB2ADT))		Gasolina	FWD	1199	81	110	07.15-07.19	■
1.2 THP 110 (HNZ (EB2DT))		Gasolina	FWD	1199	81	110	07.15-07.19	■
1.2 THP 130 (HNY (EB2DTS))		Gasolina	FWD	1199	96	130	09.15-07.19	■
1.6 THP (SB5GWM) (5GX (EP6FDTMD))		Gasolina	FWD	1598	110	150	07.15-07.19	■
1.6 THP (5GZ (EP6FDT))		Gasolina	FWD	1598	120	163	07.15-07.19	■
1.6 THP 165 (5GZ (EP6FDT))		Gasolina	FWD	1598	121	165	07.15-07.19	■
1.6 BlueHDi 100 (BHY (DV6FD))		Diesel	FWD	1560	73	99	07.15-07.19	■
1.6 BlueHDi 116 (BHX (DV6FC))		Diesel	FWD	1560	85	116	07.15-07.19	■
1.6 BlueHDi 120 (BHZ (DV6FC))		Diesel	FWD	1560	88	120	07.15-07.19	■
DS 3 (SA_) 04.15-					Hatchback (City car-A Segment)			
1.2 VTi 82 (SAHMZ6) (HMZ (EB2))		Gasolina	FWD	1199	60	82	04.15-07.19	■
1.2 VTi 82 (SAHMZ6) (HMZ (EB2F))		Gasolina	FWD	1199	60	82	04.15-07.19	■
1.2 THP 110 / PureTech 110 (SAHNPS, SAHNZ6, SAHNZT) (HNP (EB2ADT))		Gasolina	FWD	1199	81	110	04.15-07.19	■
1.2 THP 110 / PureTech 110 (SAHNPS, SAHNZ6, SAHNZT) (HNZ (EB2DT))		Gasolina	FWD	1199	81	110	04.15-07.19	■
1.2 THP 130 (SAHNYM) (HNY (EB2DTS))		Gasolina	FWD	1199	96	130	09.15-07.19	■
1.6 THP (SA5GWM) (5GW (EP6FDT))		Gasolina	FWD	1598	110	150	07.15-07.19	■
1.6 THP (SA5GZM) (5GZ (EP6FDT))		Gasolina	FWD	1598	120	163	07.15-07.19	■
1.6 THP 165 (SA5GZM) (5GZ (EP6FDT))		Gasolina	FWD	1598	121	165	07.15-07.19	■
1.4 HDi 70 (SA8HR4, SA8HP4)		Diesel	FWD	1398	50	68	07.15-12.16	■
1.6 BlueHDi 75 (SABHW6) (BHW (DV6FE))		Diesel	FWD	1560	55	75	07.15-07.19	■
1.6 BlueHDi 100 (SABHY0, SABHYT) (BHY (DV6FD))		Diesel	FWD	1560	73	99	04.15-07.19	■
1.6 BlueHDi 116 (SABHXM) (BHX (DV6FC))		Diesel	FWD	1560	85	116	07.15-07.19	■
1.6 BlueHDi 120 (SABHZM) (BHZ (DV6FC))		Diesel	FWD	1560	88	120	07.15-07.19	■
DS 3 CROSSBACK (UR_, UC_, UJ_) 10.18-					Hatchback (City car-A Segment)			
1.2 PureTech 100 (URHNKK, URHNEK) (HNK (EB2ADTD))		Gasolina	FWD	1199	74	101	10.18-	■
1.2 PureTech 130 (URHNSS) (HNS (EB2ADTS))		Gasolina	FWD	1199	96	131	10.18-	■
1.2 PureTech 155 (URHNNS) (HNN (EB2ADTX))		Gasolina	FWD	1199	115	156	10.18-12.22	■
E-TENSE (UZZKXZ) (ZKX)		Eléctrico	FWD		100	136	05.19-12.22	■
E-TENSE (UZZKXZ)		Eléctrico	FWD		115	156	01.23-	■
1.5 BlueHDi 100 (UCYHYJ) (YHY (DV5RD))		Diesel	FWD	1499	75	102	10.18-12.22	■
1.5 BlueHDi 110 (UCYHSK)		Diesel	FWD	1499	81	110	01.21-12.22	■
1.5 BlueHDi 130 (UCYHZR) (YHZ (DV5RC))		Diesel	FWD	1499	96	130	10.18-	■
DS 4 / DS 4 CROSSBACK (NX_) 07.15-					Hatchback (Compact car-C Segment)			
1.2 THP 130 (NXHNYM) (HNY (EB2DTS))		Gasolina	FWD	1199	96	130	07.15-12.18	■
1.6 BlueHDi 115 (BHX (DV6FC))		Diesel	FWD	1560	85	116	07.15-12.18	■

LISTA DE APLICACIONES - BUYERS GUIDE

OPEL								
CORSA F (P2JO) 07.19-					Hatchback (Supermini car-B Segment)			
1.2 (68) (F 12 XEL (EB2FAD))		Gasolina	FWD	1199	55	75	07.19-	■
1.2 (68) (F 12 XHL (EB2ADTD))		Gasolina	FWD	1199	74	101	07.19-	■
1.2 (68) (F 12 XHT (EB2ADTS))		Gasolina	FWD	1199	96	131	07.19-	■
1.2 MHEV		Gasol./el éc.	FWD	1199	74	101	08.23-	■
Corsa-e (68) (ZKX (ZK01))		Eléctrico	FWD		100	136	07.19-	■
1.5 (68) (D 15 DT (DV5RD))		Diesel	FWD	1499	75	102	07.19-	■
CORSA F Van 07.19-					Hatchback Van (Supermini car-B Segment)			
1.2 (68) (F 12 XEL (EB2FAD))		Gasolina	FWD	1199	55	75	07.19-	■
1.5 (68) (D 15 DT (DV5RD))		Diesel	FWD	1499	75	102	07.19-	■
CROSSLAND X (P17, P2QO) 03.17-					SUV (Subcompact SUV-B Segment)			
1.2 (75) (B 12 XE (EB2F))		Gasolina	FWD	1199	60	82	03.17-	■
1.2 (75) (D 12 XE (EB2FA))		Gasolina	FWD	1199	60	82	03.17-	■
1.2 (F 12 XE (EB2FA))		Gasolina	FWD	1199	61	83	07.19-	■
1.2 (75) (B 12 XHL (EB2DT))		Gasolina	FWD	1199	81	110	03.17-	■
1.2 (75) (D 12 XHL (EB2ADT))		Gasolina	FWD	1199	81	110	03.17-	■
1.2 (75) (F 12 XHL)		Gasolina	FWD	1199	81	110	03.17-	■
1.2 (75) (B 12 XHT (EB2DTS))		Gasolina	FWD	1199	96	131	03.17-	■
1.2 (75) (D 12 XHT (EB2ADTS))		Gasolina	FWD	1199	96	131	03.17-	■
1.2 (75) (F 12 XHT (EB2ADTS))		Gasolina	FWD	1199	96	131	03.17-	■
1.2 LPG (75) (B 12 XE (EB2F))		Gasol./Gas (LPG)	FWD	1199	60	82	10.17-	■
1.5 Turbo D (75) (D 15 DT (DV5RD))		Diesel	FWD	1499	75	102	06.18-	■
1.5 (75)		Diesel	FWD	1499	81	110	10.20-	■
1.5 Turbo D (75) (D 15 DTH (DV5RC))		Diesel	FWD	1499	88	120	08.18-	■
1.6 Turbo D(75) (B 16 DT (DV6FD))		Diesel	FWD	1560	73	99	03.17-05.18	■
1.6 Turbo D(75) (B 16 DTH (DV6FC))		Diesel	FWD	1560	85	116	08.17-04.19	■
1.6 Turbo D(75) (B 16 DTH (DV6FC))		Diesel	FWD	1560	88	120	03.17-05.18	■
CROSSLAND X Van 03.17-					SUV Van (Subcompact SUV-B Segment)			
1.2 (75) (F 12 XE (EB2FA))		Gasolina	FWD	1199	61	83	07.19-	■
1.2 (75) (D 12 XHL (EB2ADT))		Gasolina	FWD	1199	81	110	07.18-	■
1.2 (75) (F 12 XHL)		Gasolina	FWD	1199	81	110	07.18-	■
1.5 (75) (D 15 DT (DV5RD))		Diesel	FWD	1499	75	102	06.18-	■
MOKKA II 06.20-					SUV (Mini SUV-J Segment)			
1.2 (76) (F 12 XHL (EB2ADTD))		Gasolina	FWD	1199	74	101	10.20-	■
1.2 (76) (F 12 XHT (EB2ADTS))		Gasolina	FWD	1199	96	131	10.20-	■
1.5 (76)		Diesel	FWD	1499	81	110	10.20-	■
PEUGEOT								
2008 (CU_) 03.13-					SUV Van (Compact SUV-J Segment)			
PureTech 130 (CUHNYM, CUHNSS)		Gasolina	FWD	1199	96	131	01.18-11.19	■
BlueHDi 100 (CUYHYM)		Diesel	FWD	1499	75	102	05.18-	■
BlueHDi 120 (CUYHXK)		Diesel	FWD	1499	88	120	05.18-	■
2008 (CU_) 03.13-					SUV (Compact SUV-J Segment)			
1.2 VTi (HMZ (EB2))		Gasolina	FWD	1199	60	82	03.13-12.18	■
1.2 VTi (HMZ (EB2F))		Gasolina	FWD	1199	60	82	03.13-12.18	■
1.2 PureTech 82 (HMR (EB2FA))		Gasolina	FWD	1199	61	82	01.18-12.19	■
1.2 THP 110 / PureTech 110 (SAHNPS, SAHNZ6, SAHNZT) (HNP (EB2ADT))		Gasolina	FWD	1199	81	110	01.15-	■

LISTA DE APLICACIONES - BUYERS GUIDE

1.2 THP 110 / PureTech 110 (SAHNPS, SAHNZ6, SAHNZT) (HNV (EB2DTM))	Gasolina	FWD	1199	81	110	01.15-	■
1.2 THP 110 / PureTech 110 (SAHNPS, SAHNZ6, SAHNZT) (HNZ (EB2DT))	Gasolina	FWD	1199	81	110	01.15-	■
1.2 THP 130 / PureTech 130 (HNS (EB2ADTS))	Gasolina	FWD	1199	96	130	01.15-11.19	■
1.2 THP 130 / PureTech 130 (HNY (EB2DTS))	Gasolina	FWD	1199	96	130	01.15-11.19	■
1.6 VTi (5FS (EP6C))	Gasolina	FWD	1598	85	116	05.13-	■
1.6 VTi (5FS (EP6C))	Gasolina	FWD	1598	88	120	03.13-	■
1.6 THP 165 (5GY (EP6FDTM))	Gasolina	FWD	1598	121	165	02.16-	■
1.6 THP 165 (5GZ (EP6FDT))	Gasolina	FWD	1598	121	165	02.16-	■
1.4 HDi (8HR (DV4C))	Diesel	FWD	1398	50	68	06.13-	■
1.5 BlueHDi 100 (YHY (DV5RD))	Diesel	FWD	1499	75	102	05.18-	■
1.5 BlueHDi 120 (YHX (DV5RC))	Diesel	FWD	1499	88	120	05.18-	■
1.6 BlueHDi 75 (BHW (DV6FE))	Diesel	FWD	1560	55	75	01.15-11.19	■
1.6 HDi (9HP (DV6DTED))	Diesel	FWD	1560	68	92	03.13-	■
1.6 BlueHDi 100 (BHY (DV6FD))	Diesel	FWD	1560	73	100	01.15-11.19	■
1.6 HDi (9HD (DV6C))	Diesel	FWD	1560	84	114	03.13-	■
1.6 BlueHDi (BHX (DV6FC))	Diesel	FWD	1560	85	116	07.14-	■
1.6 BlueHDi 120 (BHZ (DV6FC))	Diesel	FWD	1560	88	120	07.14-04.18	■
2008 II (UD_, US_, UY_, UJ_, UR_, UC_) 08.19-				SUV (Compact SUV-J Segment)			
1.2 PureTech 100 (USHNK) (HNK (EB2ADTD))	Gasolina	FWD	1199	74	101	11.19-	■
1.2 PureTech 130 (USHNS, URHNS) (HNS (EB2ADTS))	Gasolina	FWD	1199	96	130	08.19-	■
1.2 THP / PureTech 155 (USHNNS, URHNNS, UXHNJP, URHNJP,... (HNJ (EB2ADTXM))	Gasolina	FWD	1199	114	155	11.19-	■
1.2 THP / PureTech 155 (USHNNS, URHNNS, UXHNJP, URHNJP,... (HNN (EB2ADTX))	Gasolina	FWD	1199	114	155	11.19-	■
1.2 THP / PureTech 155 (USHNNS, URHNNS, UXHNJP, URHNJP,... (HNR (EB2ADTXM))	Gasolina	FWD	1199	114	155	11.19-	■
e-2008 (UKZKXZ) (ZKX (ZK01))	Eléctrico	FWD		100	136	09.19-	■
e-2008 (UKZKWZ)	Eléctrico	FWD		115	156	04.23-	■
1.5 BlueHDi 100 (YHY (DV5RD))	Diesel	FWD	1499	75	102	08.19-	■
1.5 BlueHDi 110 (UDYHSK)	Diesel	FWD	1499	81	110	01.21-	■
1.5 BlueHDi 130 (YHZ (DV5RC))	Diesel	FWD	1499	96	131	08.19-	■
206 (2A/C) 08.98-				Hatchback (Supermini car-B Segment)			
2.0 RC (RFK (EW10J4S))	Gasolina	FWD	1997	130	177	07.03-12.07	■
207 (WA_, WC_) 04.06-				Hatchback Van (LCVs-N1 Segment)			
1.6 VTi (5FW (EP6))	Gasolina	FWD	1598	88	120	03.07-12.12	■
1.6 HDi (9HX (DV6ATED4))	Diesel	FWD	1560	66	90	04.07-10.12	■
1.6 HDi (9HP (DV6DTED))	Diesel	FWD	1560	68	92	11.09-03.13	■
1.6 HDi (9HZ (DV6TED4))	Diesel	FWD	1560	80	109	04.06-12.12	■
207 (WA_, WC_) 02.06-				Hatchback (Supermini car-B Segment)			
1.4 16V (8FR (EP3))	Gasolina	FWD	1397	72	98	10.09-12.12	■
1.6 16V	Gasolina	FWD	1587	79	106	08.08-12.13	■
1.6 16V (NFU (TU5JP4))	Gasolina	FWD	1587	80	109	02.06-10.13	■
1.6 (N6A (TU5JP4))	Gasolina	FWD	1587	81	110	08.08-12.13	■
1.6 16V VTi (EP6)	Gasolina	FWD	1598	81	110	09.08-12.12	■
1.6 16V VTi (5FS (EP6C))	Gasolina	FWD	1598	88	120	02.07-12.12	■
1.6 16V VTi (5FW (EP6))	Gasolina	FWD	1598	88	120	02.07-12.12	■
1.6 16V VTi (EP6)	Gasolina	FWD	1598	88	120	02.07-12.12	■
1.6 16V Turbo (5FX (EP6DT))	Gasolina	FWD	1598	110	150	02.06-10.13	■
1.6 16V Turbo (5FR (EP6DT))	Gasolina	FWD	1598	115	156	10.09-12.12	■

LISTA DE APLICACIONES - BUYERS GUIDE

1.6 Flex (N6A (TU5JP4))		Gasol./Etanol	FWD	1587	83	113	08.08-12.13	■
1.6 HDi (9HV (DV6TED4B))		Diesel	FWD	1560	66	90	02.06-10.13	■
1.6 HDi (9HV (DV6TED4BU))		Diesel	FWD	1560	66	90	02.06-10.13	■
1.6 HDi (9HX (DV6ATED4))		Diesel	FWD	1560	66	90	02.06-10.13	■
1.6 HDi (9HP (DV6DTED))		Diesel	FWD	1560	68	92	11.09-12.12	■
1.6 HDi (9HY (DV6TED4))		Diesel	FWD	1560	80	109	02.06-10.13	■
1.6 HDi (9HZ (DV6TED4))		Diesel	FWD	1560	80	109	02.06-10.13	■
1.6 HDi 110 (9HR (DV6C))		Diesel	FWD	1560	82	112	08.09-12.12	■
1.9 D		Diesel	FWD	1868	51	69	10.08-12.12	■
2.0 HDi		Diesel	FWD	1997	66	90	10.08-12.12	■
207 / 207 PASION 12.07-					Saloon (Supermini car-B Segment)			
1.6 BioFlex (N6A (TU5JP4))		Gasol./Etanol	FWD	1587	83	113	01.08-12.13	■
1.9 XSD		Diesel	FWD	1868	51	69	12.07-12.12	■
2.0 HDi		Diesel	FWD	1997	66	90	12.07-12.12	■
207 CC (WD_) 02.07-					Convertible (Supermini car-B Segment)			
1.6 16V (5FS (EP6C))		Gasolina	FWD	1598	88	120	02.07-10.13	■
1.6 16V (5FW (EP6))		Gasolina	FWD	1598	88	120	02.07-10.13	■
1.6 16V (EP6)		Gasolina	FWD	1598	88	120	02.07-10.13	■
1.6 16V Turbo (5FX (EP6DT))		Gasolina	FWD	1598	110	150	02.07-12.12	■
1.6 16V Turbo (5FR (EP6DT))		Gasolina	FWD	1598	115	156	10.09-12.13	■
1.6 16V Turbo (5FV (EP6CDT))		Gasolina	FWD	1598	115	156	10.09-12.13	■
1.6 HDi (9HZ (DV6TED4))		Diesel	FWD	1560	80	109	02.07-01.15	■
1.6 HDi (9HR (DV6C))		Diesel	FWD	1560	82	112	08.09-10.13	■
207 SW (WK_) 08.07-12.12					Estate Van (Supermini car-B Segment)			
1.6 HDi (9HX (DV6ATED4))		Diesel	FWD	1560	66	90	08.07-12.12	■
1.6 HDi (9HZ (DV6TED4))		Diesel	FWD	1560	80	109	08.07-12.12	■
207 SW (WK_) 02.07-					Estate (Supermini car-B Segment)			
1.4 16V (8FR (EP3))		Gasolina	FWD	1397	72	98	11.09-12.12	■
1.6		Gasolina	FWD	1587	81	110	08.08-12.12	■
1.6 16V (5FS (EP6C))		Gasolina	FWD	1598	88	120	06.07-10.13	■
1.6 16V (5FW (EP6))		Gasolina	FWD	1598	88	120	06.07-10.13	■
1.6 16V (EP6)		Gasolina	FWD	1598	88	120	06.07-10.13	■
1.6 16V Turbo (5FX (EP6DT))		Gasolina	FWD	1598	110	150	02.07-12.12	■
1.6 Flex		Gasol./Etanol	FWD	1587	83	113	08.08-12.13	■
1.6 HDi (9HV (DV6TED4B))		Diesel	FWD	1560	66	90	06.07-12.12	■
1.6 HDi (9HV (DV6TED4BU))		Diesel	FWD	1560	66	90	06.07-12.12	■
1.6 HDi (9HP (DV6DTED))		Diesel	FWD	1560	68	92	11.09-12.13	■
1.6 HDi (9HZ (DV6TED4))		Diesel	FWD	1560	80	109	06.07-12.12	■
1.6 HDi (9HR (DV6C))		Diesel	FWD	1560	82	112	08.09-10.13	■
2.0 HDi		Diesel	FWD	1997	66	90	10.08-12.12	■
208 II (UB_, UP_, UW_, UJ_) 06.19-					Hatchback (Supermini car-B Segment)			
1.2 PureTech 75 (HMH (EB2FAD))		Gasolina	FWD	1199	55	75	06.19-	■
1.2 VTI 82		Gasolina	FWD	1199	60	82	06.19-	■
1.2 PureTech 100 (HMK (EB2ADT))		Gasolina	FWD	1199	74	101	06.19-	■
1.2 PureTech 130 (HNS (EB2ADTS))		Gasolina	FWD	1199	96	131	06.19-	■
1.2 PureTech 130 (HNY (EB2DTS))		Gasolina	FWD	1199	96	131	06.19-	■
1.6 VTI 115 (UWNFPW, UWNFJW)		Gasolina	FWD	1587	85	116	11.19-	■
e-208 (ZKX (ZK01))		Eléctrico	FWD		100	136	06.19-	■

LISTA DE APLICACIONES - BUYERS GUIDE

1.5 BlueHDi 100 (YHY (DV5RD))		Diesel	FWD	1499	75	102	06.19-	■
1.5 BlueHDi 130 (YHZ (DV5RC))		Diesel	FWD	1499	96	131	09.19-	■
1.6 HDi 90 (UB9HPA)		Diesel	FWD	1560	68	92	10.19-	■
3008 (0U_) 05.09-12.17					Box Body/MPV (Compact MPV-M1 Segment)			
HDi 110 (0U9HZ8, 0U9HZT)		Diesel	FWD	1560	80	109	06.09-08.16	■
3008 (0U_) 05.09-12.17					MPV (Compact MPV-M1 Segment)			
1.2 (HNY (EB2DTS))		Gasolina	FWD	1199	96	131	01.15-08.16	■
1.6 VTi (5FS (EP6C))		Gasolina	FWD	1598	88	120	06.09-08.16	■
1.6 VTi (5FW (EP6))		Gasolina	FWD	1598	88	120	06.09-08.16	■
1.6 VTi (EP6)		Gasolina	FWD	1598	88	120	06.09-08.16	■
1.6 HDi (9HZ (DV6TED4))		Diesel	FWD	1560	80	109	06.09-08.16	■
1.6 HDi 115 / BlueHDi 115 (9HC (DV6C))		Diesel	FWD	1560	85	116	02.13-08.16	■
1.6 HDi 115 / BlueHDi 115 (BHX (DV6FC))		Diesel	FWD	1560	85	116	02.13-08.16	■
307 (3B) 03.03-06.09					Convertible (Compact car-C Segment)			
1.6 16V (NFU (TU5JP4))		Gasolina	FWD	1587	80	110	03.03-04.09	■
2.0 16V (RFN (EW10J4))		Gasolina	FWD	1997	100	136	10.03-06.05	■
2.0 16V (RFJ (EW10A))		Gasolina	FWD	1997	103	140	12.04-04.09	■
2.0 16V		Gasolina	FWD	1997	105	143	10.05-04.09	■
2.0 16V (RFK (EW10J4S))		Gasolina	FWD	1997	132	180	04.05-06.09	■
307 (3E) 03.02-					Estate (Compact car-C Segment)			
1.4 16V (KFU (ET3J4))	vehicles with ESP	Gasolina	FWD	1360	65	88	11.03-07.07	■
1.6 16V (NFU (TU5JP4))	vehicles with ESP	Gasolina	FWD	1587	80	109	03.02-04.08	■
2.0 (RFN (EW10J4))		Gasolina	FWD	1997	100	136	03.02-06.05	■
2.0 16V (RFJ (EW10A))		Gasolina	FWD	1997	103	140	03.05-04.08	■
1.6 BioFlex (NFU (TU5JP4))		Gasol./Etanol	FWD	1587	80	109	09.07-04.08	■
1.6 HDi (9HV (DV6TED4B))		Diesel	FWD	1560	66	90	04.05-04.08	■
1.6 HDi (9HV (DV6TED4BU))		Diesel	FWD	1560	66	90	04.05-04.08	■
1.6 HDi (9HX (DV6ATED4))		Diesel	FWD	1560	66	90	04.05-04.08	■
1.6 HDi (9HX (DV6AUTED4))		Diesel	FWD	1560	66	90	04.05-04.08	■
1.6 HDi 110 (9HY (DV6TED4))		Diesel	FWD	1560	80	109	02.04-04.08	■
1.6 HDi 110 (9HZ (DV6TED4))		Diesel	FWD	1560	80	109	02.04-04.08	■
2.0 HDi 90 (RHY (DW10TD))	vehicles with ESP	Diesel	FWD	1997	66	90	03.02-04.08	■
2.0 HDi 110 (RHS (DW10ATED))		Diesel	FWD	1997	79	107	03.02-12.09	■
307 (3A/C) 08.00-					Hatchback (Compact car-C Segment)			
1.4 16V (KFU (ET3J4))	vehicles with ESP	Gasolina	FWD	1360	65	88	11.03-07.07	■
1.6 16V (NFU (TU5JP4))	vehicles with ESP	Gasolina	FWD	1587	80	109	08.00-11.07	■
1.6 (NFU (TU5JP4))		Gasolina	FWD	1587	81	110	07.06-04.12	■
2.0 16V (RFN (EW10J4))		Gasolina	FWD	1997	100	136	08.00-06.05	■
2.0 16V (RFJ (EW10A))		Gasolina	FWD	1997	103	140	03.05-11.07	■
2.0 (RFJ (EW10A))		Gasolina	FWD	1997	105	143	08.08-12.11	■
2.0 (RFN (EW10J4))		Gasolina	FWD	1997	105	143	08.08-12.11	■
1.6 BioFlex (NFU (TU5JP4))		Gasol./Etanol	FWD	1587	80	109	09.07-04.09	■
1.6 Flex (N6A (TU5JP4))		Gasol./Etanol	FWD	1587	83	113	07.06-12.12	■
1.6 HDi (9HV (DV6TED4B))		Diesel	FWD	1560	66	90	04.05-03.09	■
1.6 HDi (9HV (DV6TED4BU))		Diesel	FWD	1560	66	90	04.05-03.09	■
1.6 HDi (9HX (DV6ATED4))		Diesel	FWD	1560	66	90	04.05-03.09	■
1.6 HDi 110 (9HY (DV6TED4))		Diesel	FWD	1560	80	109	02.04-03.09	■
1.6 HDi 110 (9HZ (DV6TED4))		Diesel	FWD	1560	80	109	02.04-03.09	■

LISTA DE APLICACIONES - BUYERS GUIDE

2.0 HDI 90 (RHY (DW10TD))	vehicles with ESP	Diesel	FWD	1997	66	90	08.00-03.07	■
2.0 HDI 110 (RHS (DW10ATED))		Diesel	FWD	1997	79	107	08.00-03.07	■
307 01.01-					Saloon (Compact car-C Segment)			
1.6		Gasolina	FWD	1587	81	110	08.06-12.12	■
2.0		Gasolina	FWD	1997	103	140	09.06-12.08	■
2.0		Gasolina	FWD	1997	105	143	03.04-04.09	■
2.0 HDi		Diesel	FWD	1997	80	109	09.06-03.12	■
307 SW (3E_, 3H_) 04.02-12.09					Estate Van (Compact car-C Segment)			
1.6 HDi (9HX (DV6ATED4))		Diesel	FWD	1560	66	90	04.06-10.08	■
2.0 HDi (RHY (DW10TD))		Diesel	FWD	1997	66	90	04.03-04.08	■
2.0 HDi (RHZ (DW10ATED))		Diesel	FWD	1997	79	107	01.03-12.09	■
307 SW (3H) 03.02-					Estate (Compact car-C Segment)			
1.6 16V (NFU (TU5JP4))		Gasolina	FWD	1587	80	109	03.02-04.08	■
2.0 16V (RFN (EW10J4))		Gasolina	FWD	1997	100	136	03.02-06.05	■
2.0 16V (RFJ (EW10A))		Gasolina	FWD	1997	103	140	03.05-04.08	■
2.0 16V (RFJ (EW10A))		Gasolina	FWD	1997	105	143	10.05-12.09	■
1.6 BioFlex (NFU (TU5JP4))		Gasol./Etanol	FWD	1587	80	109	09.07-04.08	■
1.6 HDi 90 (9HV (DV6TED4B))		Diesel	FWD	1560	66	90	04.05-04.08	■
1.6 HDi 90 (9HV (DV6TED4BU))		Diesel	FWD	1560	66	90	04.05-04.08	■
1.6 HDi 90 (9HX (DV6ATED4))		Diesel	FWD	1560	66	90	04.05-04.08	■
1.6 HDi 90 (9HX (DV6AUTED4))		Diesel	FWD	1560	66	90	04.05-04.08	■
1.6 HDi 110 (9HY (DV6TED4))		Diesel	FWD	1560	80	109	11.03-12.07	■
1.6 HDi 110 (9HZ (DV6TED4))		Diesel	FWD	1560	80	109	11.03-12.07	■
2.0 HDi 90 (RHY (DW10TD))		Diesel	FWD	1997	66	90	03.02-04.08	■
2.0 HDi 110 (RHS (DW10ATED))		Diesel	FWD	1997	79	107	03.02-12.09	■
2.0 HDi 135 (RHR (DW10BTED4))		Diesel	FWD	1997	100	136	02.04-04.08	■
308 (4A_, 4C_) 09.07-					Hatchback (Compact car-C Segment)			
1.4 16V (8FS (EP3))		Gasolina	FWD	1397	70	95	09.07-10.14	■
1.4 16V (EP3)		Gasolina	FWD	1397	70	95	09.07-10.14	■
1.6		Gasolina	FWD	1587	85	115	02.12-12.15	■
1.6 16V (5FW (EP6))		Gasolina	FWD	1598	88	120	09.07-10.14	■
1.6 16V (EP6)		Gasolina	FWD	1598	88	120	09.07-10.14	■
1.6 16V (5FT (EP6DT))		Gasolina	FWD	1598	103	140	09.07-10.14	■
1.6 16V (5FX (EP6DT))		Gasolina	FWD	1598	110	150	09.07-10.14	■
1.6		Gasolina	FWD	1598	120	163	01.12-12.15	■
1.6 16V (5FY (EP6DTS))		Gasolina	FWD	1598	128	174	03.08-10.14	■
1.6 HDi (9HV (DV6TED4B))		Diesel	FWD	1560	66	90	09.07-10.14	■
1.6 HDi (9HV (DV6TED4BU))		Diesel	FWD	1560	66	90	09.07-10.14	■
1.6 HDi (9HX (DV6ATED4))		Diesel	FWD	1560	66	90	09.07-10.14	■
1.6 HDi (9HZ (DV6TED4))		Diesel	FWD	1560	80	109	09.07-10.14	■
2.0 HDi (RHR (DW10BTED4))		Diesel	FWD	1997	100	136	09.07-10.14	■
2.0 HDi (RHR (DW10CB))		Diesel	FWD	1997	100	136	09.07-10.14	■
308 SW (4E_, 4H_) 09.07-					Estate (Compact car-C Segment)			
1.4 16V (8FS (EP3))		Gasolina	FWD	1397	70	95	09.07-10.14	■
1.4 16V (8FR (EP3))		Gasolina	FWD	1397	72	98	12.09-10.14	■
1.6 16V (5FW (EP6))		Gasolina	FWD	1598	88	120	09.07-10.14	■
1.6 16V (EP6)		Gasolina	FWD	1598	88	120	09.07-10.14	■
1.6 16V (5FX (EP6DT))		Gasolina	FWD	1598	110	150	09.07-10.14	■
1.6 16V (5FY (EP6DTS))		Gasolina	FWD	1598	128	174	03.08-10.14	■

LISTA DE APLICACIONES - BUYERS GUIDE

1.6 HDi (9HV (DV6TED4BU))		Diesel	FWD	1560	66	90	09.07-10.14	■
1.6 HDi (9HX (DV6ATED4))		Diesel	FWD	1560	66	90	09.07-10.14	■
1.6 HDi (9HZ (DV6TED4))		Diesel	FWD	1560	80	109	09.07-10.14	■
2.0 HDi (RHR (DW10BTED4))		Diesel	FWD	1997	100	136	09.07-12.12	■
308 CC (4B_) 02.09-					Convertible (Compact car-C Segment)			
1.6 16V (5FX (EP6DT))		Gasolina	FWD	1598	110	150	06.09-12.14	■
308 SW (4E_) 01.08-12.12					Estate Van (Compact car-C Segment)			
1.6 HDi (9HX (DV6ATED4))		Diesel	FWD	1560	66	90	01.08-12.11	■
1.6 HDi (9HZ (DV6TED4))		Diesel	FWD	1560	80	109	01.08-12.12	■
408 02.10-					Saloon (Compact car-C Segment)			
1.6 (EC5F)		Gasolina	FWD	1587	85	116	01.12-	■
1.6 16V		Gasolina	FWD	1598	80	109	02.10-	■
1.6 VTi (5FS (EP6C))		Gasolina	FWD	1598	88	120	01.12-	■
1.6 THP 150 (5FE (EP6CDTMD))		Gasolina	FWD	1598	110	150	01.11-	■
1.6 THP160		Gasolina	FWD	1598	120	163	01.11-	■
1.6		Gasolina	FWD	1598	121	165	02.12-12.16	■
2.0 16V		Gasolina	FWD	1997	108	147	02.10-	■
2.0 Flex		Gasol./Etanol	FWD	1997	111	151	03.11-12.16	■
1.6 HDi		Diesel	FWD	1560	82	112	01.12-	■
1.6 HDi (9HD (DV6C))		Diesel	FWD	1560	84	114	11.16-	■
1.6 HDi (9HL (DV6C))		Diesel	FWD	1560	85	116	11.10-	■
5008 (0U_, 0E_) 06.09-					MPV (Compact MPV-M1 Segment)			
1.2 (HNY (EB2DTS))		Gasolina	FWD	1199	96	131	01.15-03.17	■
1.6 THP 150 (5FX (EP6DT))		Gasolina	FWD	1598	110	150	02.12-03.17	■
1.6 THP 163 (5GZ (EP6FDT))		Gasolina	FWD	1598	120	163	02.12-03.17	■
1.6 THP 165 (5GZ (EP6FDT))		Gasolina	FWD	1598	121	165	02.12-03.17	■
1.6 BlueHDi 115		Diesel	FWD	1560	85	116	11.14-03.17	■
1.6 BlueHDi 120 (BHZ (DV6FC))		Diesel	FWD	1560	88	120	05.14-03.17	■
PARTNER (5_, G_) 03.97-07.08					Platform/Chassis (LCVs-N1 Segment)			
1.6		Gasolina	FWD	1587	80	109	09.00-05.08	■
2.0 HDi		Diesel	FWD	1997	66	90	11.02-07.08	■
PARTNER / GRAND RAID / RANCH (5_, G_) 05.96-12.15					MPV (Compact MPV-M1 Segment)			
1.1 (HDZ (TU1M))	vehicles with ESP	Gasolina	FWD	1124	44	60	06.96-10.02	■
1.1 (HFX (TU1JP))	vehicles with ESP	Gasolina	FWD	1124	44	60	06.96-10.02	■
1.4 (KFW (TU3JP))	vehicles with ESP	Gasolina	FWD	1360	54	73	11.02-10.06	■
1.4 (KFW (TU3A))	10/02-, vehicles with ESP	Gasolina	FWD	1360	55	75	06.96-12.15	■
1.4 (KFW (TU3JP))	10/02-, vehicles with ESP	Gasolina	FWD	1360	55	75	06.96-12.15	■
1.4 (KFX (TU3JP))	10/02-, vehicles with ESP	Gasolina	FWD	1360	55	75	06.96-12.15	■
1.8 (LFX (XU7JB))	10/02-, vehicles with ESP	Gasolina	FWD	1761	66	90	05.97-12.02	■
1.6 Flexfuel (NFU (TU5JP4))		Gasol./Etanol	FWD	1587	80	109	09.00-10.02	■
1.6 HDi 75 (9HW (DV6BTED4))	vehicles with ESP	Diesel	FWD	1560	55	75	08.05-07.08	■
1.6 HDi 90 (9HX (DV6ATED4))	vehicles with ESP	Diesel	FWD	1560	66	90	08.05-12.15	■
1.6 HDi 92 (9HJ (DV6DTEDM))		Diesel	FWD	1560	68	92	11.09-12.10	■
1.6 HDi 92 (9HP (DV6DTED))		Diesel	FWD	1560	68	92	11.09-12.10	■
1.9 D (WJY (DW8B))	10/02-, vehicles with ESP	Diesel	FWD	1868	51	69	01.99-07.08	■
1.9 D (WJZ (DW8))	10/02-, vehicles with ESP	Diesel	FWD	1868	51	69	01.99-07.08	■
1.9 D 4x4 (WJY (DW8B))	vehicles with ESP	Diesel	4WD	1868	51	69	04.04-08.05	■
1.9 D (DJY (XUD9A))	10/02-, vehicles with ESP	Diesel	FWD	1905	50	68	06.96-12.02	■

LISTA DE APLICACIONES - BUYERS GUIDE

2.0 HDi (RHY (DW10TD))	10/02-, vehicles with ESP	Diesel	FWD	1997	66	90	02.00-07.08	■
2.0 HDi 4x4 (RHY (DW10TD))	vehicles with ESP	Diesel	4WD	1997	66	90	04.04-08.05	■
PARTNER / RANCH (5_, G_) 06.96-12.15					Box Body/MPV (LCVs-N1 Segment)			
1.1 (HDZ (TU1M))	10/02-, vehicles with ESP	Gasolina	FWD	1124	44	60	06.96-09.05	■
1.4 (KFV (TU3A))	vehicles with ESP	Gasolina	FWD	1360	54	73	11.02-10.06	■
1.4 (KFW (TU3A))	10/02-, vehicles with ESP	Gasolina	FWD	1360	55	75	06.96-12.15	■
1.4 (KFX (TU3JP))	10/02-, vehicles with ESP	Gasolina	FWD	1360	55	75	06.96-12.15	■
1.4 (TU32)	10/02-, vehicles with ESP	Gasolina	FWD	1360	55	75	06.96-12.15	■
1.4 CNG (KFW (TU3JP))	vehicles with ESP	Gasol./Gas (CNG)	FWD	1360	55	75	04.03-10.06	■
1.6 BioFlex (NFU (TU5JP4))		Gasol./Etanol	FWD	1587	80	109	09.00-10.02	■
1.6 HDi 75 (9HW (DV6BTED4))	vehicles with ESP	Diesel	FWD	1560	55	75	08.05-12.11	■
1.6 HDi 90 (9HX (DV6ATED4))	vehicles with ESP	Diesel	FWD	1560	66	90	08.05-12.15	■
1.6 HDi 92 (9HJ (DV6DTEDM))		Diesel	FWD	1560	68	92	11.09-12.10	■
1.6 HDi 92 (9HP (DV6DTEDM))		Diesel	FWD	1560	68	92	11.09-12.10	■
1.8 D (A9A (XUD7))	10/02-, vehicles with ESP	Diesel	FWD	1769	43	58	06.96-12.02	■
1.9 D (WJY (DW8B))	10/02-, vehicles with ESP	Diesel	FWD	1868	51	69	06.96-12.15	■
1.9 D (WJZ (DW8))	10/02-, vehicles with ESP	Diesel	FWD	1868	51	69	06.96-12.15	■
1.9 D 4x4 (WJY (DW8B))	vehicles with ESP	Diesel	4WD	1868	51	69	04.04-07.11	■
1.9 D (DJY (XUD9A))	10/02-, vehicles with ESP	Diesel	FWD	1905	51	69	06.96-12.02	■
2.0 HDi (RHY (DW10TD))	10/02-, vehicles with ESP	Diesel	FWD	1997	66	90	04.00-07.08	■
2.0 HDi 4x4 (RHY (DW10TD))	vehicles with ESP	Diesel	4WD	1997	66	90	04.04-08.05	■
PARTNER II 01.09-					Platform/Chassis (LCVs-N1 Segment)			
1.6 HDi (9HT (DV6BTED4))		Diesel	FWD	1560	55	75	01.09-	■
1.6 HDi (9HF (DV6DTEDM))		Diesel	FWD	1560	66	90	03.13-	■
1.6 HDi 16V (9HS (DV6TED4BU))		Diesel	FWD	1560	66	90	01.09-	■
1.6 HDi 16V (9HX (DV6ATED4))		Diesel	FWD	1560	66	90	01.09-	■
1.6 BlueHDi 100 (BHY (DV6FD))		Diesel	FWD	1560	73	100	04.15-	■
PARTNER II / GRAND RAID / RANCH 04.08-					Box Body/MPV (LCVs-N1 Segment)			
1.2 THP (HNZ (EB2DT))		Gasolina	FWD	1199	81	110	02.16-	■
1.6 (NFR (TU5JP4B))		Gasolina	FWD	1587	66	90	04.08-	■
1.6 (NFU (TU5JP4))		Gasolina	FWD	1587	80	109	04.08-	■
1.6 HDi (9HT (DV6BTED4))		Diesel	FWD	1560	55	75	04.08-	■
1.6 HDi (9HT (DV6BUTED4))		Diesel	FWD	1560	55	75	04.08-	■
1.6 HDi (9HW (DV6BTED4))		Diesel	FWD	1560	55	75	04.08-	■
1.6 HDi / BlueHDi 75 (9HK (DV6ETEDM))		Diesel	FWD	1560	55	75	07.11-	■
1.6 HDi / BlueHDi 75 (9HN (DV6ETED))		Diesel	FWD	1560	55	75	07.11-	■
1.6 HDi / BlueHDi 75 (BHW (DV6FE))		Diesel	FWD	1560	55	75	07.11-	■
1.6 HDi 16V (9HS (DV6TED4BU))		Diesel	FWD	1560	66	90	04.08-	■
1.6 HDi 16V (9HX (DV6AUTED4))		Diesel	FWD	1560	66	90	04.08-	■
1.6 HDi 16V (9HX (DV6ATED4))		Diesel	FWD	1560	68	92	04.10-	■
1.6 BlueHDi 100 (BHY (DV6FD))		Diesel	FWD	1560	73	100	04.15-	■
1.6 HDi (9HZ (DV6TED4))		Diesel	FWD	1560	80	109	04.08-	■
1.6 HDi (9HL (DV6C))		Diesel	FWD	1560	82	111	08.10-	■
1.6 BlueHDi 120 (BHZ (DV6FC))		Diesel	FWD	1560	88	120	04.15-	■
PARTNER II Tepee / GRAND RAID / RANCH 04.08-					MPV (Compact MPV-M1 Segment)			
1.2 THP (HNV (EB2DTM))		Gasolina	FWD	1199	81	110	02.16-	■
1.2 THP (HNZ (EB2DT))		Gasolina	FWD	1199	81	110	02.16-	■
1.6 VTi (NFR (TU5JP4B))		Gasolina	FWD	1587	66	90	04.08-	■

LISTA DE APLICACIONES - BUYERS GUIDE

1.6 VTi (NFU (TU5JP4))		Gasolina	FWD	1587	80	109	04.08-	■
Électrique (Y4F1)		Eléctrico	FWD		49	67	06.13-	■
1.6 HDi		Diesel	FWD	1560	55	75	04.08-	■
1.6 HDi / BlueHDi 75 (9HK (DV6ETEDM))		Diesel	FWD	1560	55	75	06.08-12.18	■
1.6 HDi / BlueHDi 75 (9HN (DV6ETED))		Diesel	FWD	1560	55	75	06.08-12.18	■
1.6 HDi / BlueHDi 75 (BHW (DV6FE))		Diesel	FWD	1560	55	75	06.08-12.18	■
1.6 HDi 75 (16V) (9HT (DV6BTED4))		Diesel	FWD	1560	55	75	06.08-	■
1.6 HDi (9HF (DV6DTED))		Diesel	FWD	1560	66	90	03.13-	■
1.6 HDi 16V (9HV (DV6TED4B))		Diesel	FWD	1560	66	90	04.08-	■
1.6 HDi 16V (9HV (DV6TED4BU))		Diesel	FWD	1560	66	90	04.08-	■
1.6 HDi 90 4x4		Diesel	4WD	1560	68	92	07.12-	■
1.6 BlueHDi 100 (BHY (DV6FD))		Diesel	FWD	1560	73	100	12.14-	■
1.6 HDi (9HZ (DV6TED4))		Diesel	FWD	1560	80	109	04.08-	■
1.6 BlueHDi 120 (BHZ (DV6FC))		Diesel	FWD	1560	88	120	12.14-	■
VAUXHALL								
CORSA Mk V (F) 07.19-					Hatchback (Supermini car-B Segment)			
1.2 (F 12 XEL (EB2FAD))		Gasolina	FWD	1199	55	75	07.19-	■
1.2 (F 12 XHL (EB2ADTD))		Gasolina	FWD	1199	74	101	07.19-	■
1.2		Gasolina	FWD	1199	96	131	11.20-	■
CORSA-e (ZKX (ZK01))		Eléctrico	FWD		100	136	07.19-	■
1.5 (D 15 DT (DV5RD))		Diesel	FWD	1499	75	102	07.19-	■
CROSSLAND X (P17) 03.17-					SUV (Subcompact SUV-B Segment)			
1.2 (75) (B 12 XE (EB2F))		Gasolina	FWD	1199	61	83	03.17-	■
1.2 (75) (D 12 XE (EB2FA))		Gasolina	FWD	1199	61	83	03.17-	■
1.2 (75) (B 12 XHL (EB2DT))		Gasolina	FWD	1199	81	110	03.17-	■
1.2 (75) (B 12 XHT (EB2DTS))		Gasolina	FWD	1199	81	110	03.17-	■
1.2 (75) (D 12 XHL (EB2ADT))		Gasolina	FWD	1199	81	110	03.17-	■
1.2 (75) (B 12 XHT (EB2DTS))		Gasolina	FWD	1199	96	131	03.17-	■
1.2 (75) (D 12 XHT (EB2ADTS))		Gasolina	FWD	1199	96	131	03.17-	■
1.2 (75) (F 12 XHT (EB2ADTS))		Gasolina	FWD	1199	96	131	03.17-	■
1.5 Turbo D (75) (D 15 DT (DV5RD))		Diesel	FWD	1499	75	102	06.18-	■
1.5 Turbo D ((75))		Diesel	FWD	1499	81	110	10.20-	■
1.5 Turbo D (75) (D 15 DTH (DV5RC))		Diesel	FWD	1499	88	120	08.18-	■
1.6 Turbo D(75) (B 16 DT (DV6FD))		Diesel	FWD	1560	73	99	03.17-05.18	■
1.6 Turbo D(75) (B 16 DTH (DV6FC))		Diesel	FWD	1560	88	120	03.17-05.18	■
MOKKA II 06.20-					SUV (Mini SUV-J Segment)			
1.2 (76) (F 12 XHL (EB2ADTD))		Gasolina	FWD	1199	74	101	10.20-	■
1.2 (76) (F 12 XHT (EB2ADTS))		Gasolina	FWD	1199	96	131	10.20-	■
1.5 (76)		Diesel	FWD	1499	81	110	10.20-	■