

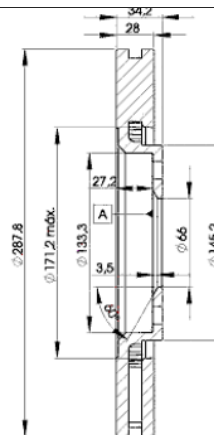
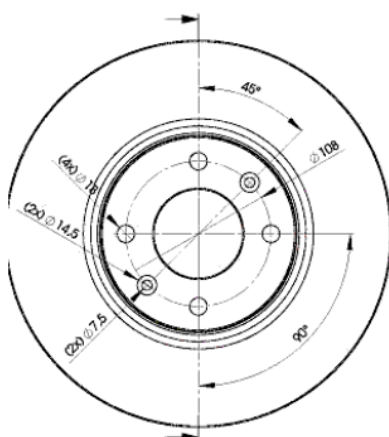
LISTA DE APLICACIONES - BUYERS GUIDE

78BD4753-2



Weight: 16.892

O.E.M.	MAKE
4246.R6	CITROËN
4246.T8	CITROËN
4246.W3	CITROËN



78BD4753-2



Ø289x28x34

MAKE
CITROËN



Trac.	CC	Kw	CV		
					Front / Rear

CITROËN

(RE_) 09.04-01.08						Estate Van ()		
2.0 HDi (RERHRH) (RHR (DW10BTED4))	Diesel	FWD	1997	100	136	09.04-01.08	■	
C5 (DE_) 06.02-08.04						Estate Van (Large family car-D Segment)		
2.2 HDi (DE4HXB, DE4HXF)	Diesel	FWD	2179	98	133	06.02-08.04	■	
C5 (DE_) 06.01-09.04						Estate (Large family car-D Segment)		
3.0 V6 (DEXFXC, DEXFXF) (XFX (ES9J4S))	Gasolina	FWD	2946	152	207	06.01-08.04	■	
3.0 V6 (REXFUF) (XFU (ES9A))	Gasolina	FWD	2946	152	207	09.04-01.08	■	
3.0 V6 (REXFUJ) (XFU (ES9A))	Gasolina	FWD	2946	155	211	10.04-04.07	■	
3.0 (REXFUJ) (XFX (ES9J4S))	Gasolina	FWD	2946	173	235	09.04-01.08	■	
3.0 Carlsson (XFX (ES9J4S))	Gasolina	FWD	2946	173	235	09.03-08.04	■	
2.2 HDi (DE4HXB, DE4HXE) (4HX (DW12TED4))	Diesel	FWD	2179	98	133	06.01-08.04	■	
2.2 HDi (RE4HXE) (4HX (DW12TED4))	Diesel	FWD	2179	98	133	09.04-09.06	■	
2.2 HDi (RE4HPE, RE4HP2, RE4HRE, RE4HR2) (4HP (DW12BTED4))	Diesel	FWD	2179	120	163	05.06-01.08	■	
2.2 HDi (RE4HPE, RE4HP2, RE4HRE, RE4HR2) (4HR (DW12BTED4))	Diesel	FWD	2179	120	163	05.06-01.08	■	
2.2 HDi (RE4HTE, RE4HT2) (4HT (DW12BTED4))	Diesel	FWD	2179	125	170	04.06-08.08	■	
C5 (DC_) 03.01-03.05						Hatchback (Large family car-D Segment)		
3.0 V6 (DCXFXC, DCXFXF) (XFX (ES9J4S))	Gasolina	FWD	2946	152	207	03.01-08.04	■	
3.0 V6 (RCXFUF) (XFU (ES9A))	Gasolina	FWD	2946	152	207	09.04-09.08	■	
3.0 V6 (RCXFUF) (XFX (ES9J4S))	Gasolina	FWD	2946	152	207	09.04-09.08	■	
3.0 V6 (XFX (ES9A))	Gasolina	FWD	2946	155	211	10.04-04.07	■	
3.0 V6 (DCXFXF) (XFX (ES9J4S))	Gasolina	FWD	2946	157	213	05.01-08.04	■	

LISTA DE APLICACIONES - BUYERS GUIDE

3.0 Carlsson HP		Gasolina	FWD	2946	173	235	08.01-08.04	■
3.0 Carlsson HP (XFX (ES9J4S))		Gasolina	FWD	2946	173	235	09.04-01.08	■
2.2 HDi (DC4HXB, DC4HXE) (4HX (DW12TED4))		Diesel	FWD	2179	98	133	03.01-08.04	■
2.2 HDi (RC4HXE) (4HX (DW12TED4))		Diesel	FWD	2179	98	133	09.04-08.08	■
2.2 HDi (4HP (DW12BTED4))		Diesel	FWD	2179	120	163	05.06-01.08	■
2.2 HDi (4HR (DW12BTED4))		Diesel	FWD	2179	120	163	05.06-01.08	■
2.2 HDi (4HT (DW12BTED4))		Diesel	FWD	2179	125	170	04.06-08.08	■
XANTIA (X2_) 12.97-04.03					Estate Van (Large family car-D Segment)			
1.9 DT		Diesel	FWD	1905	66	90	12.97-12.00	■
XANTIA (X1_, X2_) 06.95-04.03					Estate (Large family car-D Segment)			
2.0 Turbo	11/98-, -10/00	Gasolina	FWD	1998	108	147	01.98-04.03	■
3.0 V6 (XFZ (ES9J4))	-10/00	Gasolina	FWD	2946	140	190	01.98-04.03	■
1.9 Turbo D	-10/00, Automatic Transmiss.	Diesel	FWD	1905	66	90	01.98-04.03	■
2.0 HDi 109 (RHZ (DW10ATED))	-10/00	Diesel	FWD	1997	80	109	02.99-04.03	■
2.1 Turbo D 12V	10/98-	Diesel	FWD	2088	80	109	01.98-02.99	■
XANTIA (X1_, X2_) 03.93-04.03					Hatchback (Large family car-D Segment)			
2.0 16V		Gasolina	FWD	1998	99	135	06.98-11.00	■
2.0 Turbo	10/98-	Gasolina	FWD	1998	108	147	01.98-04.03	■
3.0 i 24V (XFZ (ES9J4))		Gasolina	FWD	2946	140	190	01.97-04.03	■
3.0 V6	-10/00	Gasolina	FWD	2946	140	190	01.98-04.03	■
1.9 Turbo D	-12/00, Automatic Transmiss.	Diesel	FWD	1905	66	90	01.98-04.03	■
2.0 HDi 90 (RHY (DW10TD))		Diesel	FWD	1997	66	90	03.99-04.03	■
2.0 HDi 109 (RHZ (DW10ATED))		Diesel	FWD	1997	80	109	02.99-04.03	■
2.1 Turbo D 12V	10/98-	Diesel	FWD	2088	80	109	01.98-02.99	■