

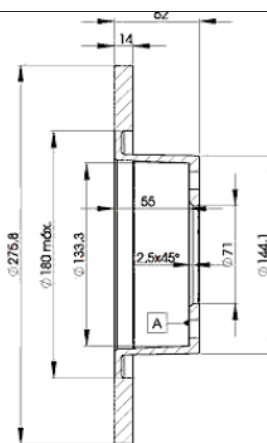
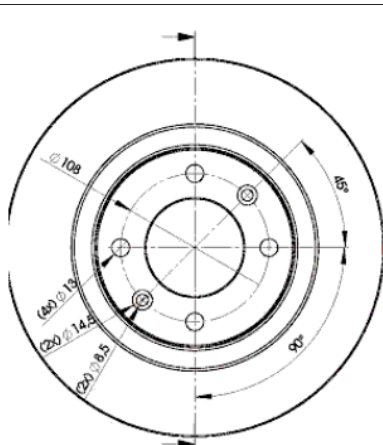
LISTA DE APLICACIONES - BUYERS GUIDE

78BD4754-2



Weight: 11.104

O.E.M.	MAKE
4246.W4	CITROËN



78BD4754-2

E1 90R-02C0415/0129



Ø276x14x62

MAKE
CITROËN



Trac.	CC	Kw	CV		
					Front / Rear

CITROËN

(RE_) 09.04-01.08

Estate Van ()

1.8 16V (RE6FZB) (6FZ (EW7J4))	Gasolina	FWD	1749	85	116	09.04-08.05	■
2.0 16V (RERFJB, RERFJC) (RFJ (EW10A))	Gasolina	FWD	1997	103	140	11.04-01.08	■
1.6 HDi (RE9HYB, RE9HZB) (9HY (DV6TED4))	Diesel	FWD	1560	80	109	09.04-01.08	■
1.6 HDi (RE9HYB, RE9HZB) (9HZ (DV6TED4))	Diesel	FWD	1560	80	109	09.04-01.08	■
2.0 HDi (RERHRH) (RHR (DW10BTED4))	Diesel	FWD	1997	100	136	09.04-01.08	■

C5 (DE_) 06.02-08.04

Estate Van (Large family car-D Segment)

2.0 HDi (DERHYB) (RHY (DW10TD))	Diesel	FWD	1997	66	90	06.02-08.04	■
2.0 HDi (DERHSE, DERHSB) (RHS (DW10ATED))	Diesel	FWD	1997	79	107	06.02-08.04	■
2.0 HDi (DERHZB, DERHZE) (RHZ (DW10ATED))	Diesel	FWD	1997	80	109	06.02-08.04	■
2.2 HDi (DE4HXB, DE4HXF)	Diesel	FWD	2179	98	133	06.02-08.04	■

C5 (DE_) 06.01-09.04

Estate (Large family car-D Segment)

1.8 16V (DE6FZB, DE6FZE) (6FZ (EW7J4))	Gasolina	FWD	1749	85	115	06.01-08.04	■
1.8 16V (RE6FZB) (6FZ (EW7J4))	Gasolina	FWD	1749	85	116	09.04-08.05	■
1.8 16V (RE6FYB) (6FY (EW7A))	Gasolina	FWD	1749	92	125	09.05-01.08	■
2.0 16V (DERFNF, DERFNC, RERFNC) (RFN (EW10J4))	Gasolina	FWD	1997	100	136	06.01-08.04	■
2.0 16V (RERFJB, RERFJC) (RFJ (EW10A))	Gasolina	FWD	1997	103	140	09.04-01.08	■
2.0 16V HPi (DERLZB) (RLZ (EW10D))	Gasolina	FWD	1997	103	140	06.01-08.04	■
3.0 V6 (DEXFXC, DEXFXF) (XFX (ES9J4S))	Gasolina	FWD	2946	152	207	06.01-08.04	■
3.0 V6 (REXFUF) (XFU (ES9A))	Gasolina	FWD	2946	152	207	09.04-01.08	■
3.0 V6 (REXFUJ) (XFU (ES9A))	Gasolina	FWD	2946	155	211	10.04-04.07	■
3.0 (REXFUJ) (XFX (ES9J4S))	Gasolina	FWD	2946	173	235	09.04-01.08	■

LISTA DE APLICACIONES - BUYERS GUIDE

3.0 Carlsson (XFX (ES9J4S))	Gasolina	FWD	2946	173	235	09.03-08.04	■
1.6 HDi (RE9HZC, RE9HYB) (9HY (DV6TED4))	Diesel	FWD	1560	80	109	09.04-01.08	■
1.6 HDi (RE9HZC, RE9HYB) (9HZ (DV6TED4))	Diesel	FWD	1560	80	109	09.04-01.08	■
2.0 HDi (DERHYB) (RHY (DW10TD))	Diesel	FWD	1997	66	90	06.01-08.04	■
2.0 HDi (DERHSB, DERHSE) (RHS (DW10ATED))	Diesel	FWD	1997	79	107	06.01-08.04	■
2.0 HDi (DERHZB, DERHZE) (RHZ (DW10ATED))	Diesel	FWD	1997	80	109	06.01-08.04	■
2.0 HDi (RERHRH) (RHR (DW10BTED4))	Diesel	FWD	1997	100	136	09.04-01.08	■
2.2 HDi (DE4HXB, DE4HXE) (4HX (DW12TED4))	Diesel	FWD	2179	98	133	06.01-08.04	■
2.2 HDi (RE4HXE) (4HX (DW12TED4))	Diesel	FWD	2179	98	133	09.04-09.06	■
2.2 HDi (RE4HPE, RE4HP2, RE4HRE, RE4HR2) (4HP (DW12BTED4))	Diesel	FWD	2179	120	163	05.06-01.08	■
2.2 HDi (RE4HPE, RE4HP2, RE4HRE, RE4HR2) (4HR (DW12BTED4))	Diesel	FWD	2179	120	163	05.06-01.08	■
2.2 HDi (RE4HTE, RE4HT2) (4HT (DW12BTED4))	Diesel	FWD	2179	125	170	04.06-08.08	■
C5 (DC_) 03.01-03.05				Hatchback (Large family car-D Segment)			
1.8 16V (DC6FZB, DC6FZE) (6FZ (EW7J4))	Gasolina	FWD	1749	85	115	03.01-08.04	■
1.8 16V (RC6FZB) (6FZ (EW7J4))	Gasolina	FWD	1749	85	116	09.04-08.05	■
1.8 16V (6FY (EW7A))	Gasolina	FWD	1749	92	125	09.05-01.08	■
2.0 16V (DCRFNC, DCRFNF) (RFN (EW10J4))	Gasolina	FWD	1997	100	136	03.01-08.04	■
2.0 16V (RCRFJB, RCRFJC) (RFJ (EW10A))	Gasolina	FWD	1997	103	140	09.04-08.08	■
2.0 16V HPi (DCRLZB) (RLZ (EW10D))	Gasolina	FWD	1997	103	140	03.01-08.04	■
2.0 16V	Gasolina	FWD	1997	105	143	03.05-11.07	■
3.0 V6 (DCXFXC, DCXFXF) (XFX (ES9J4S))	Gasolina	FWD	2946	152	207	03.01-08.04	■
3.0 V6 (RCXFUF) (XFU (ES9A))	Gasolina	FWD	2946	152	207	09.04-09.08	■
3.0 V6 (RCXFUF) (XFX (ES9J4S))	Gasolina	FWD	2946	152	207	09.04-09.08	■
3.0 V6 (XFV (ES9A))	Gasolina	FWD	2946	155	211	10.04-04.07	■
3.0 V6 (DCXFXF) (XFX (ES9J4S))	Gasolina	FWD	2946	157	213	05.01-08.04	■
3.0 Carlsson HP	Gasolina	FWD	2946	173	235	08.01-08.04	■
3.0 Carlsson HP (XFX (ES9J4S))	Gasolina	FWD	2946	173	235	09.04-01.08	■
1.6 HDi (RC8HZB) (9HY (DV6TED4))	Diesel	FWD	1560	80	109	09.04-01.08	■
1.6 HDi (RC8HZB) (9HZ (DV6TED4))	Diesel	FWD	1560	80	109	09.04-01.08	■
2.0 HDi (DCRHYB) (RHY (DW10TD))	Diesel	FWD	1997	66	90	03.01-08.04	■
2.0 HDi (RHS (DW10ATED))	Diesel	FWD	1997	79	107	03.01-08.04	■
2.0 HDi (RHZ (DW10ATED))	Diesel	FWD	1997	79	107	03.01-08.04	■
2.0 HDi (DCRHZB, DCRHZE) (RHZ (DW10ATED))	Diesel	FWD	1997	80	109	03.01-08.04	■
2.0 HDi (RCRHRH) (RHR (DW10BTED4))	Diesel	FWD	1997	100	136	09.04-01.08	■
2.2 HDi (DC4HXB, DC4HXE) (4HX (DW12TED4))	Diesel	FWD	2179	98	133	03.01-08.04	■
2.2 HDi (RC4HXE) (4HX (DW12TED4))	Diesel	FWD	2179	98	133	09.04-08.08	■
2.2 HDi (4HP (DW12BTED4))	Diesel	FWD	2179	120	163	05.06-01.08	■
2.2 HDi (4HR (DW12BTED4))	Diesel	FWD	2179	120	163	05.06-01.08	■
2.2 HDi (4HT (DW12BTED4))	Diesel	FWD	2179	125	170	04.06-08.08	■