

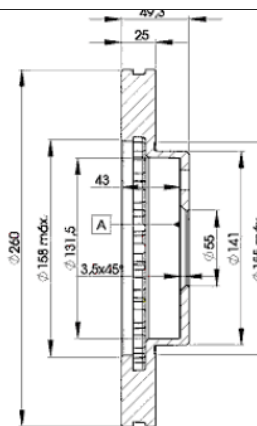
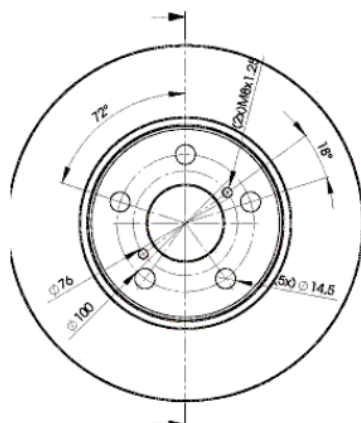
LISTA DE APLICACIONES - BUYERS GUIDE

78BD5030-2



Weight: 11.524

O.E.M.	MAKE
43512-05030	TOYOTA
43512-05031	TOYOTA



78BD5030-2

E1 90R-02C0452/0104



Ø260x25x49.2

MAKE
TOYOTA



Trac.	CC	Kw	CV
-------	----	----	----



Front / Rear

TOYOTA

AVENSIS (_ T22_) 09.97-02.03

Estate (Large family car-D Segment)

1.6 i (AT220_, AT220R) (4A-FE)	-08/00	Gasolina	FWD	1587	74	101	09.97-10.00	■
1.6 i (AT220_) (4A-FE)	-08/00	Gasolina	FWD	1587	81	110	09.97-10.00	■
1.8 i (AT221_, AT221R) (7A-FE)	-08/00	Gasolina	FWD	1762	81	110	09.97-10.00	■
2.0 i (ST220_, ST220R) (3S-FE)	-08/00	Gasolina	FWD	1998	94	128	09.97-10.00	■
2.0 D (CT220_) (2C-T)		Diesel	FWD	1974	61	82	10.97-05.98	■
2.0 TD (CT220_, CT220R) (2C-TE)	-08/00	Diesel	FWD	1974	66	90	09.97-02.03	■
2.0 D-4D (CDT220_, CDT220R) (1CD-FTV)	-08/00	Diesel	FWD	1995	81	110	10.99-02.03	■

AVENSIS (_ T22_) 09.97-02.03

Hatchback (Large family car-D Segment)

1.6 i (AT220_, AT220R) (4A-FE)	-08/00	Gasolina	FWD	1587	74	101	09.97-10.00	■
1.6 i (AT220_, AT220R) (4A-FE)	-08/00	Gasolina	FWD	1587	81	110	09.97-10.00	■
1.8 i (AT221_, AT221R) (7A-FE)	-08/00	Gasolina	FWD	1762	81	110	09.97-10.00	■
2.0 i (ST220_, ST220R) (3S-FE)	-08/00	Gasolina	FWD	1998	94	128	09.97-10.00	■
2.0 D (CT220_) (2C-T)		Diesel	FWD	1974	61	83	10.97-05.98	■
2.0 TD (CT220_, CT220R) (2C-TE)	-08/00	Diesel	FWD	1974	66	90	09.97-02.03	■
2.0 D-4D (CDT220_, CDT220R) (1CD-FTV)	-08/00	Diesel	FWD	1995	81	110	10.99-02.03	■
2.0 D (CDT220_) (1CD-FTV)		Diesel	FWD	1995	85	115	09.02-02.03	■

AVENSIS (_ T22_) 09.97-02.03

Saloon (Large family car-D Segment)

1.6 i (AT220_, AT220R) (4A-FE)	-08/00	Gasolina	FWD	1587	74	101	09.97-10.00	■
1.6 i (AT220_, AT220R) (4A-FE)		Gasolina	FWD	1587	81	110	10.97-06.00	■
1.8 i (AT221_, AT221R) (7A-FE)	-08/00	Gasolina	FWD	1762	81	110	09.97-10.00	■
2.0 i (ST220_, ST220R) (3S-FE)	-08/00	Gasolina	FWD	1998	94	128	09.97-10.00	■
2.0 D (CT220_) (2C-T)		Diesel	FWD	1974	61	83	10.97-05.98	■

LISTA DE APLICACIONES - BUYERS GUIDE

2.0 TD (CT220_, CT220R) (2C-TE)	-08/00	Diesel	FWD	1974	66	90	09.97-02.03	■
2.0 D-4D (CDT220_, CDT220R) (1CD-FTV)	-08/00	Diesel	FWD	1995	81	110	10.99-02.03	■
2.0 D		Diesel	RWD	1995	85	115	09.02-02.03	■
2.0 D-4D (CDT220) (1CD-FTV)		Diesel	FWD	1995	85	116	09.02-02.03	■
CORONA X (_T19_) 10.91-04.98						Saloon (Large family car-D Segment)		
1.8 (ST190_, ST190) (4S-FE)		Gasolina	FWD	1838	92	125	10.91-01.96	■