

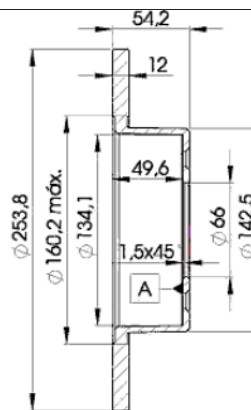
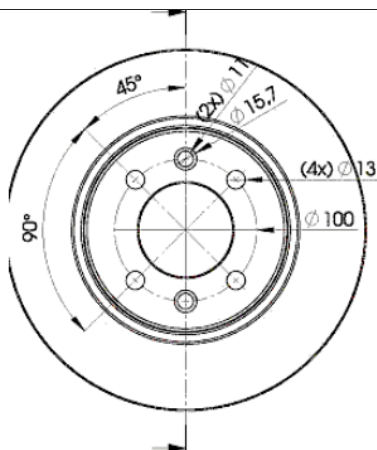
LISTA DE APLICACIONES - BUYERS GUIDE

78BD5166-2



Weight: 8.090

O.E.M.	MAKE
77 00 715 166	RENAULT
77 01 467 306	RENAULT



78BD5166-2

E1 90R-02C0100/0942



Ø254x12x54.3

MAKE
RENAULT



Trac.	CC	Kw	CV
-------	----	----	----



Front / Rear

RENAULT

ESPACE (J11_) 07.84-12.92

						MPV (Large MPV-M1 Segment)			
2.0 (J/S112) (J6R 734)	vehicles with ABS	Gasolina	FWD	1995	74	101	01.88-12.90		■
2.0 (J/S112) (J6R 234)	05/88-, vehicles with ABS	Gasolina	FWD	1995	80	109	07.84-12.90		■
2.0 (J/S112) (J6R 236)	05/88-, vehicles with ABS	Gasolina	FWD	1995	80	109	07.84-12.90		■
2.0 i (J116) (J7R 760)	vehicles with ABS	Gasolina	FWD	1995	87	118	01.89-12.90		■
2.2 (J117) (J7T 770)		Gasolina	FWD	2165	79	108	07.86-12.90		■
2.1 TD (J/S115) (J8S 240)		Diesel	FWD	2068	65	88	10.84-12.90		■
2.1 TD (J/S115) (J8S 774)		Diesel	FWD	2068	65	88	10.84-12.90		■
2.1 TD (J/S115) (J8S 776)		Diesel	FWD	2068	65	88	10.84-12.90		■

ESPACE II (J/S63_) 01.91-10.97

						MPV (Large MPV-M1 Segment)			
2.0 (J636) (J7R 768)		Gasolina	FWD	1995	76	103	01.91-10.96		■
2.2 (J/S637, J63G) (J7T 772)		Gasolina	FWD	2165	79	108	01.91-10.96		■
2.2 (J/S637, J63G) (J7T 773)		Gasolina	FWD	2165	79	108	01.91-10.96		■
2.2 (J/S637, J63G) (J7T 776)		Gasolina	FWD	2165	79	108	01.91-10.96		■
2.2 4x4 (J/S637, J63G) (J7T 772)		Gasolina	4WD	2165	79	108	03.91-12.96		■
2.2 4x4 (J/S637, J63G) (J7T 773)		Gasolina	4WD	2165	79	108	03.91-12.96		■
2.1 TD (J633, J634, J/S635, J/S63D) (J8S 610)		Diesel	FWD	2068	65	88	01.91-10.96		■
2.1 TD (J633, J634, J/S635, J/S63D) (J8S 772)		Diesel	FWD	2068	65	88	01.91-10.96		■
2.1 TD (J633, J634, J/S635, J/S63D) (J8S 776)		Diesel	FWD	2068	65	88	01.91-10.96		■
2.1 TD (J633, J634, J/S635, J/S63D) (J8S 778)		Diesel	FWD	2068	65	88	01.91-10.96		■
2.1 TD (J63E) (J8S 612)		Diesel	FWD	2068	66	90	11.94-10.96		■

ESPACE II VAN (J/S63_) 01.91-10.97

						Box Body/MPV (Large MPV-M1 Segment)			
2.2 (S637)		Gasolina	FWD	2165	79	107	06.92-10.96		■

LISTA DE APLICACIONES - BUYERS GUIDE

2.1 TD (S635, S63D)		Diesel	FWD	2068	65	88	06.92-10.96	■
FUEGO (136_) 02.80-11.92					Coupe (Sports car-S Segment)			
1.6 Turbo (1365) (A5L 750)		Gasolina	FWD	1565	97	132	08.83-10.85	■
R 18 (134_) 04.78-11.94					Saloon (Large family car-D Segment)			
1.6 Turbo (1345) (807 727)		Gasolina	FWD	1565	80	109	10.80-09.82	■
1.6 Turbo (1345) (A5L 717)		Gasolina	FWD	1565	92	125	10.82-07.86	■
1.6 Turbo (1345) (A5L 718)		Gasolina	FWD	1565	92	125	10.82-07.86	■
1.6 Turbo Inj. (A7L 752)		Gasolina	FWD	1647	82	112	09.82-07.86	■
R 18 Variable (135_) 02.79-11.94					Estate (Large family car-D Segment)			
1.6 Turbo (1355) (807 727)		Gasolina	FWD	1565	80	109	09.82-07.86	■
1.6 Turbo (A5L 717)		Gasolina	FWD	1565	92	125	10.82-07.86	■
1.6 Turbo (A5L 718)		Gasolina	FWD	1565	92	125	10.82-07.86	■
R 25 (B29_) 04.84-12.93					Hatchback (Executive car-E Segment)			
2.0 (B297) (J6R 706)	vehicles with ABS	Gasolina	FWD	1995	74	101	04.84-12.92	■
2.0 (B297) (J6R 707)	vehicles with ABS	Gasolina	FWD	1995	74	101	04.84-12.92	■
2.0 (B297) (J6R 760)	vehicles with ABS	Gasolina	FWD	1995	74	101	04.84-12.92	■
2.0 (B297) (J6R 762)	vehicles with ABS	Gasolina	FWD	1995	74	101	04.84-12.92	■
2.0 (B297) (J6R 763)	vehicles with ABS	Gasolina	FWD	1995	74	101	04.84-12.92	■
2.0 (J7R 722)	vehicles with ABS	Gasolina	FWD	1995	88	120	03.87-12.93	■
2.0 (J7R 723)	vehicles with ABS	Gasolina	FWD	1995	88	120	03.87-12.93	■
2.0 12V (B294) (J7R 726)		Gasolina	FWD	1995	99	135	06.89-12.92	■
2.0 12V (J7R 720)		Gasolina	FWD	1995	103	140	06.88-12.93	■
2.0 12V (J7R 721)		Gasolina	FWD	1995	103	140	06.88-12.93	■
2.2 (B29B) (J7T 708)	06/87-, vehicles with ABS	Gasolina	FWD	2165	79	108	09.86-12.92	■
2.2 (B29B) (J7T 732)	06/87-, vehicles with ABS	Gasolina	FWD	2165	79	108	09.86-12.92	■
2.2 (B29B) (J7T 733)	06/87-, vehicles with ABS	Gasolina	FWD	2165	79	108	09.86-12.92	■
2.2 (B29E) (J7T 706)	06/87-, vehicles with ABS	Gasolina	FWD	2165	89	121	04.84-12.89	■
2.2 (B29E) (J7T 707)	06/87-, vehicles with ABS	Gasolina	FWD	2165	89	121	04.84-12.89	■
2.2 (B29E) (J7T 714)	06/87-, vehicles with ABS	Gasolina	FWD	2165	89	121	04.84-12.89	■
2.2 (B29E) (J7T 715)	06/87-, vehicles with ABS	Gasolina	FWD	2165	89	121	04.84-12.89	■
2.2 (B29E) (J7T 730)	06/87-, vehicles with ABS	Gasolina	FWD	2165	91	124	04.84-12.89	■
2.2 (B29E) (J7T 731)	06/87-, vehicles with ABS	Gasolina	FWD	2165	91	124	04.84-12.89	■
2.1 Diesel (B296) (J8S 706)	vehicles with ABS	Diesel	FWD	2068	46	63	04.84-05.89	■
2.1 Diesel (B296) (J8S 736)	vehicles with ABS	Diesel	FWD	2068	51	69	06.89-12.92	■
2.1 Turbo-D FWD (B290, B29W) (J8S 708)	vehicles with ABS	Diesel	FWD	2068	63	86	04.84-12.92	■
2.1 Turbo-D FWD (B290, B29W) (J8S 738)	vehicles with ABS	Diesel	FWD	2068	63	86	04.84-12.92	■