

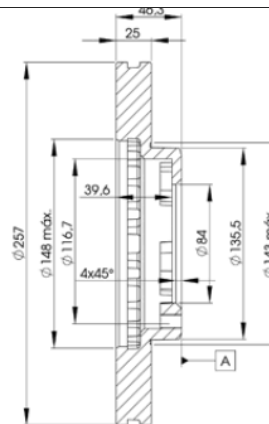
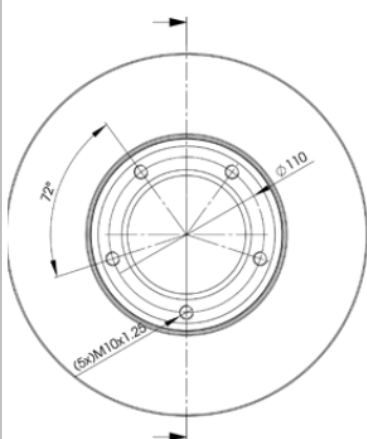
# LISTA DE APLICACIONES - BUYERS GUIDE

## 78BD5180-2



Weight: 11.450

O.E.M.	MAKE
43512-26040	TOYOTA
43512-35180	TOYOTA
J 435 123 518 0	VW



## 78BD5180-2

E1 90R-02C0074/0502



Ø257x25x46.3

MAKE
TOYOTA
VW



Trac.	CC	Kw	CV	
				Front / Rear

### TOYOTA

(_ N5_, _N6_) 08.83-08.88						Platform/Chassis ()			
1.8 (YN56) (2Y)		Gasolina	RWD	1812	58	79	08.83-07.88	■	
2.7 EFI (RZN154, RZN149) (3RZ-FE)		Gasolina	RWD	2694	107	145	08.97-08.05	■	
DYNA (_U_, _Y_) 08.77-12.09						Platform/Chassis (LCVs-N1 Segment)			
2.0 (YU60_, YU60R) (3Y)		Gasolina	RWD	1998	79	107	09.84-08.87	■	
2.4 D (LH80_, LH80R) (2L)		Diesel	RWD	2446	55	75	08.87-04.95	■	
2.4 D (JY30) (2J)		Diesel	RWD	2481	55	75	09.84-08.87	■	
DYNA 100 (YH_) 08.85-04.95						Platform/Chassis (LCVs-N1 Segment)			
1.8 (YH81_, YH81R) (2Y)		Gasolina	RWD	1812	58	79	08.85-04.95	■	
1.8 (YH81_, YH81R) (2Y)		Gasolina	RWD	1812	61	83	08.87-04.95	■	
2.4 D (LY100_, LY100R) (2L)		Diesel	RWD	2446	54	73	05.95-07.01	■	
2.4 D (LY100_) (2L)		Diesel	RWD	2446	58	79	05.95-07.01	■	
DYNA 150 (LY_) 08.88-06.95						Platform/Chassis (LCVs-N1 Segment)			
2.4 D (LY60) (2L)		Diesel	RWD	2446	55	75	09.88-04.95	■	
HiAce II (_H11_, _H2_, _H3_, _H4_) 02.77-03.83						Van (LCVs-N1 Segment)			
1.6 (RH30) (12R)		Gasolina	RWD	1588	49	67	02.77-03.83	■	
2.0 (RH32) (18R)		Gasolina	RWD	1968	65	88	02.77-03.83	■	
2.2 D (LH20, LH30) (L)		Diesel	RWD	2188	49	67	01.79-03.83	■	
HiAce III (_H5_, _H6_, _H7_, _H8_, _H9_) 11.82-09.07						Bus (Minibus-M2-Segment)			
1.8 (YH50, YH60) (2Y)		Gasolina	RWD	1812	58	79	03.83-07.89	■	
2.0 (YH51, YH61) (3Y)		Gasolina	RWD	1998	65	88	01.85-08.89	■	
2.2 (YH56, YH66, YH73) (4Y)		Gasolina	RWD	2237	69	94	08.86-08.89	■	

# LISTA DE APLICACIONES - BUYERS GUIDE

2.2 D (LH50, LH60) (L)		Diesel	RWD	2188	49	67	12.82-11.89	■
2.4 D 4WD (LH56, LH66) (2L)		Diesel	4WD	2446	54	73	01.87-08.89	■
2.4 D (LH51, LH61, LH66) (2L)		Diesel	RWD	2446	55	75	04.84-08.89	■
<b>HiAce III (_H5_, _H6_, _H7_, _H8_, _H9_) 12.82-08.05</b>					<b>Van (LCVs-N1 Segment)</b>			
1.8 (YH50, YH60) (2Y)		Gasolina	RWD	1812	58	79	12.82-07.89	■
2.0 (YH51, YH61) (3Y)		Gasolina	RWD	1998	65	88	12.82-08.89	■
2.2 (YH56, YH66, YH53, YH63) (4Y)		Gasolina	RWD	2237	69	94	08.86-08.89	■
2.2 4WD (YH56, YH66) (4Y)		Gasolina	4WD	2237	69	94	08.87-08.89	■
2.2 D (LH50, LH60) (L)	-08/89	Diesel	RWD	2188	49	67	12.82-11.89	■
2.4 D (LH61, LH51) (2L)	-08/89	Diesel	RWD	2446	55	75	12.82-11.89	■
<b>HiAce IV (_H1_) 08.89-02.05</b>					<b>Van (LCVs-N1 Segment)</b>			
2.0 (RZH102, RZH112)		Gasolina	RWD	1998	81	110	11.96-10.00	■
2.4 (RZH103_, RZH103R)		Gasolina	RWD	2438	72	98	08.89-10.96	■
2.4 D (2L)		Diesel	RWD	2446	53	72	01.92-08.95	■
2.8 D (LH105, LH103, LH113) (3L)		Diesel	RWD	2779	61	83	08.89-08.00	■
3.0 D (LH162, LH172, LH182)		Diesel	RWD	2986	65	88	08.98-08.04	■
<b>HiAce IV / QUANTUM (_H1_) 08.87-12.04</b>					<b>Bus (Minibus-M2-Segment)</b>			
2.0 (RZH124)		Gasolina	RWD	1998	81	110	11.96-10.00	■
2.4 (RZH125)		Gasolina	RWD	2438	72	98	08.89-10.96	■
2.8 D (LH105, LH125) (3L)		Diesel	RWD	2779	61	83	08.89-08.00	■
3.0 D (LH174)		Diesel	RWD	2986	65	88	08.98-08.04	■
<b>HILUX IV / PICKUP (_N5_, _N6_) 11.82-11.98</b>					<b>Pickup (LCVs-N1 Segment)</b>			
1.6 (YN55)		Gasolina	RWD	1626	55	75	11.83-09.87	■
1.8 (YN51, YN56) (2Y)		Gasolina	RWD	1812	58	79	08.83-03.89	■
1.8 (YN51, YN56) (2Y-C)		Gasolina	RWD	1812	58	79	08.83-03.89	■
2.0 (YN57, YN60) (3Y)		Gasolina	RWD	1998	65	88	08.83-07.88	■
2.2 (YN58) (4Y)		Gasolina	RWD	2237	69	94	08.83-12.89	■
2.2 4WD (YN67) (4Y)		Gasolina	4WD	2237	69	94	11.85-12.89	■
2.2 D (LN50, LN55) (L)		Diesel	RWD	2188	49	67	08.83-08.84	■
2.4 D 4WD (LN65) (2L)		Diesel	4WD	2446	55	75	08.83-07.88	■
<b>HiLux SUV V / HiLux SURF (_N13_) 08.88-11.98</b>					<b>SUV (Pick-Up Truck)</b>			
2.4 TD (LN85)		Diesel	RWD	2446	66	90	10.91-07.97	■
<b>HiLux SUV VI / SW4 (_N1_, _N2_) 01.95-08.05</b>					<b>SUV (Pick-Up Truck)</b>			
3.0 D (LN157)		Diesel	RWD	2986	70	95	11.97-05.05	■
3.0 D 4WD (LN157)		Diesel	4WD	2986	70	95	11.97-05.05	■
<b>HILUX V (_N8_, _N9_, _N10_, _N11_) 09.88-08.01</b>					<b>Pickup (Pick-Up Truck)</b>			
1.8 (YN85, YN90) (2Y)		Gasolina	RWD	1812	61	83	09.88-06.98	■
2.2 4WD (YN106)		Gasolina	4WD	2237	69	94	01.92-01.99	■
2.4 (RN90, RN85)		Gasolina	RWD	2367	75	102	10.88-12.98	■
2.4 D (LN5_, LN85, LN90) (2L)		Diesel	RWD	2446	55	75	10.88-07.97	■
2.4 TD (LN90)		Diesel	RWD	2446	66	90	01.92-01.99	■
2.8 D 4WD (LN107, LN111, LN166, LN106) (3L)		Diesel	4WD	2779	60	82	10.88-12.97	■
<b>HILUX VI (_N1_) 08.94-03.06</b>					<b>Pickup (Pick-Up Truck)</b>			
2.4 D (LN145, LN150) (2L)		Diesel	RWD	2446	58	79	08.97-07.05	■
2.4 D (LN145, LN150) (2L)		Diesel	RWD	2446	61	83	08.97-08.01	■
2.4 TD (LN190) (2L-T)		Diesel	RWD	2446	66	90	08.97-07.01	■
2.5 D-4D (KDN145, KDN150) (2KD-FTV)		Diesel	RWD	2494	65	88	11.01-07.05	■
3.0 D 4WD (LN14_, LN152_, N140)		Diesel	4WD	2986	65	88	11.97-04.05	■

# LISTA DE APLICACIONES - BUYERS GUIDE

3.0 D	Diesel	RWD	2986	70	95	11.97-05.05	■
3.0 D 4WD	Diesel	4WD	2986	70	95	11.97-05.05	■
3.0 D (LN147, LN192, LN152) (5L)	Diesel	RWD	2986	71	97	01.98-04.05	■
3.0 D (LN147, LN192, LN152) (5L-E)	Diesel	RWD	2986	71	97	01.98-04.05	■
3.0 D 4WD (LN167, LN172) (5L-E)	Diesel	4WD	2986	71	97	01.98-07.05	■
<b>LITEACE (_M3_, _M4_) 01.83-04.98</b>					<b>Van (LCVs-N1 Segment)</b>		
1.8 (YM30, YM35, YM31) (2Y)	Gasolina	RWD	1812	61	83	01.86-12.92	■
<b>VW</b>							
<b>TARO 04.89-03.97</b>					<b>Pickup (LCVs-N1 Segment)</b>		
1.8 (2Y)	Gasolina	RWD	1812	61	83	04.89-09.94	■
2.4 D (2L)	Diesel	RWD	2446	58	79	07.94-03.97	■
2.4 D 4x4 (2L)	Diesel	4WD	2446	58	79	07.94-03.97	■
2.4 D (2L)	Diesel	RWD	2446	59	80	09.91-07.94	■
2.4 D (2L)	Diesel	RWD	2446	61	83	06.89-03.97	■
2.4 D 4x4 (2L)	Diesel	4WD	2446	61	83	04.89-03.97	■