

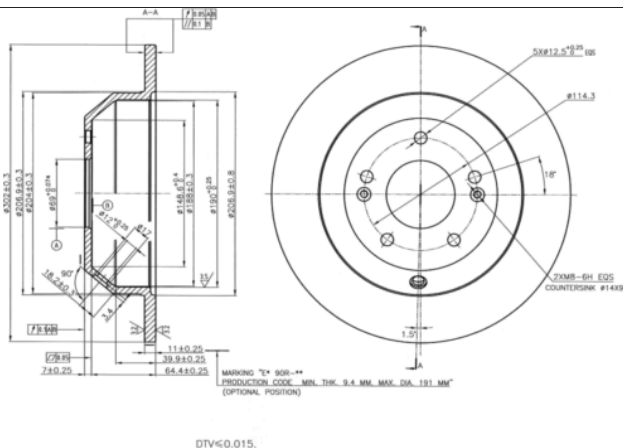
# LISTA DE APLICACIONES - BUYERS GUIDE

## 78BD5185-2



Weight: 11.996

O.E.M.	MAKE
584112P000	KIA
584112W010	HYUNDAI
58411A9000	KIA
S584112P000	HYUNDAI



## 78BD5185-2

E1 90R-02C0453/0099



Ø302x11x71.4

MAKE
HYUNDAI
HYUNDAI (BEIJING)
HYUNDAI (HUATAI)
INOKOM
KIA



Trac.	CC	Kw	CV
-------	----	----	----



Front / Rear

### HYUNDAI

#### GRAND SANTA FÉ 01.13-

#### SUV (Executive SUV-J Segment)

2.0 T-GDI	Gasolina	FWD	1998	177	241	08.15-	■
3.0 GDi A las 4 ruedas	Gasolina	4WD	2999	183	249	07.13-11.18	■
3.0 GDi A las 4 ruedas	Gasolina	4WD	2999	194	264	07.13-11.18	■
3.3 (G6DF)	Gasolina	4WD	3342	183	249	01.14-11.18	■
3.3 (G6DF)	Gasolina	FWD	3342	199	271	12.14-11.18	■
3.3 A las 4 ruedas (G6DF)	Gasolina	4WD	3342	199	271	02.14-11.18	■
3.3 GDi A las 4 ruedas (G6DH)	Gasolina	4WD	3342	210	286	07.13-11.18	■
3.3 GDI	Gasolina	FWD	3342	216	294	07.13-12.19	■
3.3 GDi A las 4 ruedas	Gasolina	4WD	3342	216	294	07.13-12.19	■
2.2 CRDi A las 4 ruedas (D4HB)	Diesel	4WD	2199	145	197	06.13-11.18	■
2.2 CRDi	Diesel	RWD	2199	147	200	09.13-	■
2.2 CRDi A las 4 ruedas (D4HB)	Diesel	4WD	2199	147	200	09.13-11.18	■

#### SANTA FE II (CM) 10.05-03.15

#### SUV Van (Executive SUV-J Segment)

CRDi	Diesel	FWD	2188	114	155	09.06-12.11	■
CRDi 4x4	Diesel	4WD	2188	114	155	09.06-12.11	■
CRDi	Diesel	FWD	2199	145	197	01.09-05.13	■
CRDi 4x4	Diesel	4WD	2199	145	197	01.09-05.13	■

#### SANTA FE II (CM) 01.05-03.15

#### SUV (Executive SUV-J Segment)

2.4 (G4KE)	Gasolina	FWD	2359	128	174	11.10-12.12	■
2.4 4x4 (G4KE)	Gasolina	4WD	2359	128	174	07.10-12.12	■
2.4	Gasolina	FWD	2359	130	177	09.09-12.12	■
2.4 AWD (G4KE)	Gasolina	4WD	2359	130	177	09.09-12.12	■

# LISTA DE APLICACIONES - BUYERS GUIDE

2.7 (G6EA)		Gasolina	FWD	2656	125	170	03.06-12.12	■
2.7 4x4 (G6EA)		Gasolina	4WD	2656	125	170	03.06-12.12	■
2.7 V6 GLS (G6EA)		Gasolina	FWD	2656	139	189	03.06-12.09	■
2.7 V6 GLS 4x4 (G6EA)		Gasolina	4WD	2656	139	189	03.06-12.09	■
2.7 4x4 (G6EA)		Gasolina	4WD	2656	147	200	01.07-12.12	■
3.3 Dynamic 4x4		Gasolina	4WD	3342	173	235	03.06-12.12	■
3.5 4x4 (G6DC)		Gasolina	4WD	3470	203	276	08.11-12.12	■
3.5 4x4 (G6DC)		Gasolina	4WD	3470	204	277	08.11-12.12	■
3.5		Gasolina	FWD	3470	206	280	09.09-12.12	■
3.5 4x4 (G6DC)		Gasolina	4WD	3470	206	280	09.09-12.12	■
3.5 4x4 (G6DC)		Gasolina	4WD	3470	210	286	07.10-12.12	■
3.5		Gasolina	FWD	3510	210	286	02.11-	■
2.0 CRDi 4x4 (D4EA)		Diesel	4WD	1991	85	115	03.06-12.12	■
2.0 CRDi (D4HA)		Diesel	FWD	1995	110	150	12.10-12.12	■
2.0 CRDi 4x4 (D4HA)		Diesel	4WD	1995	110	150	12.10-12.12	■
2.0 CRDi		Diesel	FWD	1995	135	184	01.09-12.12	■
2.0 CRDi 4x4 (D4HA)		Diesel	4WD	1995	135	184	03.06-12.12	■
2.2 CRDi (D4EB)		Diesel	FWD	2188	102	139	03.06-12.12	■
2.2 CRDi 4x4 (D4EB)		Diesel	4WD	2188	102	139	03.06-12.12	■
2.2 CRDi GLS (D4EB)		Diesel	FWD	2188	110	150	03.06-12.09	■
2.2 CRDi GLS 4x4 (D4EB)		Diesel	4WD	2188	110	150	03.06-12.09	■
2.2 CRDi (D4EB)		Diesel	FWD	2188	114	155	03.06-12.09	■
2.2 CRDi 4x4 (D4EB)		Diesel	4WD	2188	114	155	03.06-12.09	■
2.2 CRDi (D4HB)		Diesel	FWD	2199	145	197	01.09-12.12	■
2.2 CRDi 4x4 (D4HB)		Diesel	4WD	2199	145	197	01.09-12.12	■
2.2 CRDi (D4HB)		Diesel	FWD	2199	147	200	01.09-12.10	■
2.2 CRDi 4x4 (D4HB)		Diesel	4WD	2199	147	200	01.09-12.12	■
<b>SANTA FE III (DM) 09.12-</b>					<b>SUV Van (Executive SUV-J Segment)</b>			
CRDi 4x4		Diesel	4WD	2199	145	197	05.15-	■
<b>SANTA FE III (DM, DMA) 09.12-</b>					<b>SUV (Executive SUV-J Segment)</b>			
2.0 GDI (G4KH)		Gasolina	FWD	1998	177	241	06.15-12.18	■
2.0 GDi 4WD		Gasolina	4WD	1998	177	241	06.15-12.18	■
2.0		Gasolina	FWD	1998	197	268	09.12-12.18	■
2.4 CCVT (G4KE)		Gasolina	FWD	2359	126	171	06.15-10.18	■
2.4 CCVT AWD (G4KE)		Gasolina	4WD	2359	126	171	06.15-10.18	■
2.4 CCVT (G4KE)		Gasolina	FWD	2359	129	175	09.12-12.18	■
2.4 CCVT AWD (G4KE)		Gasolina	4WD	2359	129	175	09.12-02.18	■
2.4 GDI (G4KJ)		Gasolina	FWD	2359	138	188	05.15-08.18	■
2.4 GDI 4WD (G4KJ)		Gasolina	4WD	2359	138	188	05.15-08.18	■
2.4 (G4KJ)		Gasolina	FWD	2359	141	192	09.12-10.15	■
2.4 4WD (G4KJ)		Gasolina	4WD	2359	141	192	09.12-10.15	■
3.0 GDi		Gasolina	FWD	2999	194	264	01.13-12.18	■
3.0 GDi 4WD		Gasolina	4WD	2999	194	264	01.13-12.18	■
3.3		Gasolina	FWD	3342	199	270	03.14-12.19	■
3.3 4WD (G6DF)		Gasolina	4WD	3342	199	270	03.14-12.19	■
3.3 GDI		Gasolina	FWD	3342	213	290	06.15-	■
2.0 CRDi (D4HA)		Diesel	FWD	1995	110	150	09.12-08.18	■
2.0 CRDi 4WD (D4HA)		Diesel	4WD	1995	110	150	09.12-08.18	■
2.0 CRDi (D4HA)		Diesel	FWD	1995	136	185	05.15-08.18	■
2.0 CRDi 4WD (D4HA)		Diesel	4WD	1995	136	185	09.12-08.18	■

# LISTA DE APLICACIONES - BUYERS GUIDE

2.2 CRDi AWD		Diesel	4WD	2199	142	193	07.18-12.18	■
2.2 CRDi (D4HB)		Diesel	FWD	2199	145	197	09.12-12.15	■
2.2 CRDi 4WD (D4HB)		Diesel	4WD	2199	145	197	09.12-12.15	■
2.2 CRDi (D4HB)		Diesel	FWD	2199	147	200	10.15-08.18	■
2.2 CRDi 4WD (D4HB)		Diesel	4WD	2199	147	200	10.15-08.18	■
2.2 CRDi		Diesel	FWD	2199	149	202	06.15-12.18	■
2.2 CRDi 4WD		Diesel	4WD	2199	149	202	06.15-12.18	■
HYUNDAI (BEIJING)								
SANTA FE (DM) 12.12-					SUV (Executive SUV-J Segment)			
2.0		Gasolina	FWD	1998	180	245	12.12-	■
2.0 4WD		Gasolina	4WD	1998	180	245	12.12-	■
2.4		Gasolina	FWD	2359	139	189	12.12-	■
2.4 4WD		Gasolina	4WD	2359	139	189	12.12-	■
HYUNDAI (HUATAI)								
SANTA FE 10.06-					Closed Off-Road Vehicle (Executive SUV-J Segment)			
1.8		Gasolina	FWD	1796	110	148	10.06-	■
2.0		Gasolina	FWD	1997	93	126	11.10-	■
2.7		Gasolina	FWD	2656	128	172	10.06-	■
2.0 D		Diesel	RWD	1991	93	125	10.06-	■
INOKOM								
SANTA FE (CM) 09.06-					SUV (Executive SUV-J Segment)			
2.7 (G6EA)		Gasolina	FWD	2656	138	188	09.06-12.12	■
2.7 AWD (G6EA)		Gasolina	4WD	2656	138	188	09.06-12.12	■
2.2 CRDi (D4EB)		Diesel	FWD	2188	110	150	09.06-12.12	■
2.2 CRDi AWD (D4EB)		Diesel	4WD	2188	110	150	09.06-12.12	■
KIA								
SEDONA III / CARNIVAL III (YP) 09.14-					MPV (Large MPV-M1 Segment)			
3.3 (G6DF)		Gasolina	FWD	3342	196	266	01.15-	■
3.3 (G6DF)		Gasolina	FWD	3342	199	271	01.15-	■
3.3 GDI (G6DH)		Gasolina	FWD	3342	203	276	09.14-	■
3.3 GDI (G6DH)		Gasolina	FWD	3342	206	280	09.14-	■
2.2 CRDi		Diesel	RWD	2199	140	190	07.15-	■
2.2 TD (D4HB)		Diesel	FWD	2199	147	200	07.15-	■
2.2 CRDi		Diesel	FWD	2199	149	203	07.15-	■
SORENTO (JC) 08.02-					SUV (Compact SUV-J Segment)			
2.5 CRDi 4WD		Diesel	4WD	2497	131	178	09.06-12.11	■
SORENTO II (XM) 06.09-12.15					SUV Van (Compact SUV-J Segment)			
CVVT		Gasolina	FWD	2359	128	174	06.09-12.15	■
CVVT 4WD		Gasolina	4WD	2359	128	174	06.09-12.15	■
CRDi		Diesel	FWD	2199	145	197	11.09-12.15	■
CRDi 4WD		Diesel	4WD	2199	145	197	11.09-12.15	■
SORENTO II (XM) 09.09-					SUV (Compact SUV-J Segment)			
2.4 CVVT (G4KE)		Gasolina	FWD	2359	128	174	11.09-12.15	■
2.4 CVVT 4WD (G4KE)		Gasolina	4WD	2359	128	174	11.09-12.15	■
2.4		Gasolina	FWD	2359	130	177	09.10-12.12	■
2.4 AWD		Gasolina	4WD	2359	130	177	09.10-12.12	■
2.4 CVVT		Gasolina	FWD	2359	141	192	10.12-12.15	■
2.4 CVVT 4WD		Gasolina	4WD	2359	141	192	10.12-12.15	■

# LISTA DE APLICACIONES - BUYERS GUIDE

2.4 GDI (G4KJ)		Gasolina	FWD	2359	141	192	10.12-12.15	■
2.4 GDI 4WD (G4KJ)		Gasolina	4WD	2359	141	192	10.12-12.15	■
2.4 GDI		Gasolina	FWD	2359	142	193	09.13-	■
3.3 GDI		Gasolina	FWD	3342	216	294	09.13-	■
3.5		Gasolina	FWD	3470	203	276	11.09-12.15	■
3.5 4WD (G6DC)		Gasolina	4WD	3470	203	276	11.09-12.15	■
3.5 (G6DC)		Gasolina	FWD	3470	204	278	05.13-12.15	■
3.5 4WD (G6DC)		Gasolina	4WD	3470	204	278	05.13-12.15	■
3.5		Gasolina	FWD	3470	206	280	09.10-12.13	■
3.5 4WD		Gasolina	4WD	3470	206	280	01.11-12.15	■
3.5		Gasolina	FWD	3470	207	282	11.09-	■
2.4 LPG (G4KE)		Gasol./Gas (LPG)	FWD	2359	126	171	04.10-12.15	■
2.4 LPG 4WD (G4KE)		Gasol./Gas (LPG)	4WD	2359	126	171	04.10-12.15	■
2.7 LPI		Gasol./Gas (LPG)	FWD	2656	119	162	11.09-12.15	■
2.0 CRDi (D4HA)		Diesel	FWD	1995	110	150	11.10-12.15	■
2.0 CRDi 4WD (D4HA)		Diesel	4WD	1995	110	150	11.10-12.15	■
2.0 CRDi (D4HA)		Diesel	FWD	1995	135	184	11.09-12.15	■
2.0 CRDi 4WD		Diesel	4WD	1995	135	184	11.09-12.15	■
2.2 CRDi (D4HB)		Diesel	FWD	2199	145	197	11.09-12.15	■
2.2 CRDi 4WD (D4HB)		Diesel	4WD	2199	145	197	11.09-12.15	■
2.2 CRDi (D4HB)		Diesel	FWD	2199	147	200	11.09-12.15	■
2.2 CRDi 4WD (D4HB)		Diesel	4WD	2199	147	200	11.09-12.15	■