

LISTA DE APLICACIONES - BUYERS GUIDE

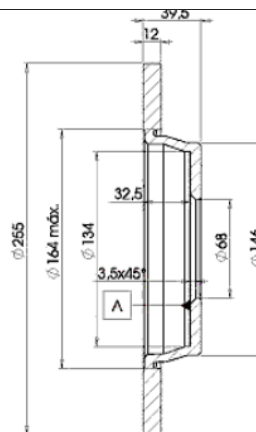
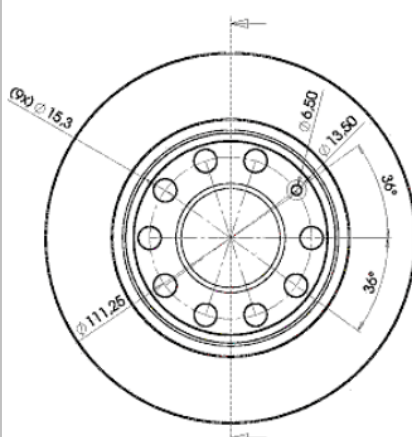
78BD5309-2



8 424073 146922

Weight: 7.756

O.E.M.	MAKE
8E0 615 601 D	VW
8E0 615 601 Q	SEAT



78BD5309-2

E1 90R-02C0415/0005



Ø255x12x39.7

MAKE
AUDI
SEAT



Trac.	CC	Kw	CV
-------	----	----	----



Front / Rear

AUDI

A4 II B6 (8H7) 01.02-12.09

Convertible (Compact executive car-D Segment)

1.8 T quattro (BFB)		Gasolina	4WD	1781	120	163	05.03-12.05	■
2.4 (AMM)		Gasolina	FWD	2393	120	163	04.02-12.05	■
2.4 (BDV)	-05/03	Gasolina	FWD	2393	125	170	04.02-12.05	■
3.0 (BBJ)		Gasolina	FWD	2976	160	218	04.02-12.05	■
3.0 (ASN)		Gasolina	FWD	2976	162	220	04.02-12.05	■
3.0 (AVK)		Gasolina	FWD	2976	162	220	04.02-12.05	■
3.0 (BGN)		Gasolina	FWD	2976	162	220	04.02-12.05	■
3.0 quattro (ASN)		Gasolina	4WD	2976	162	220	05.03-12.05	■
3.0 quattro (AVK)		Gasolina	4WD	2976	162	220	05.03-12.05	■
3.0 quattro (BGN)		Gasolina	4WD	2976	162	220	05.03-12.05	■
2.5 TDI (BCZ)		Diesel	FWD	2496	120	163	08.02-12.05	■
2.5 TDI (BDG)		Diesel	FWD	2496	120	163	08.02-12.05	■
2.5 TDI (BFC)		Diesel	FWD	2496	120	163	08.02-12.05	■

A4 II B6 (8E2) 11.00-12.05

Saloon (Compact executive car-D Segment)

1.8 T quattro (AVJ)		Gasolina	4WD	1781	110	150	11.00-07.02	■
1.8 T quattro (BFB)		Gasolina	4WD	1781	120	163	07.02-12.04	■
1.8 T quattro (AMB)		Gasolina	4WD	1781	125	170	07.01-12.04	■
1.8 T quattro (AWM)		Gasolina	4WD	1781	125	170	07.01-12.04	■
1.8 T quattro (BEX)		Gasolina	4WD	1781	140	190	11.02-12.04	■
2.4 (AMM)		Gasolina	FWD	2393	120	163	09.01-12.04	■
2.4 (BDV)		Gasolina	FWD	2393	125	170	09.01-12.04	■
3.0 (BBJ)		Gasolina	FWD	2976	160	218	04.01-12.04	■

LISTA DE APLICACIONES - BUYERS GUIDE

3.0 quattro (BBJ)		Gasolina	4WD	2976	160	218	04.01-12.04	■
3.0 (ASN)		Gasolina	FWD	2976	162	220	11.00-12.04	■
3.0 (AVK)		Gasolina	FWD	2976	162	220	11.00-12.04	■
1.9 TDI quattro (AVF)		Diesel	4WD	1896	96	130	11.01-12.04	■
2.5 TDI (AYM)		Diesel	FWD	2496	114	155	08.01-07.02	■
2.5 TDI (BCZ)		Diesel	FWD	2496	120	163	07.02-12.04	■
2.5 TDI (BDG)		Diesel	FWD	2496	120	163	07.02-12.04	■
2.5 TDI (BFC)		Diesel	FWD	2496	120	163	07.02-12.04	■
2.5 D		Diesel	RWD	2496	132	179	10.00-05.03	■
2.5 TDI quattro (AKE)		Diesel	4WD	2496	132	180	11.00-12.04	■
2.5 TDI quattro (BAU)		Diesel	4WD	2496	132	180	11.00-12.04	■
2.5 TDI quattro (BDH)		Diesel	4WD	2496	132	180	11.00-12.04	■
A4 II B6 Avant (8E5) 02.00-12.05					Estate (Compact executive car-D Segment)			
1.8 T quattro (BFB)	PR 1KP	Gasolina	4WD	1781	120	163	07.02-12.04	■
1.8 T quattro (AMB)	PR 1KP	Gasolina	4WD	1781	125	170	09.01-12.04	■
1.8 T quattro (BEX)		Gasolina	4WD	1781	140	190	11.02-12.04	■
2.4 (AMM)	-10/04	Gasolina	FWD	2393	120	163	09.01-12.04	■
2.4 (BDV)		Gasolina	FWD	2393	125	170	09.01-12.04	■
3.0 (BBJ)		Gasolina	FWD	2976	160	218	04.01-12.04	■
3.0 quattro (BBJ)		Gasolina	4WD	2976	160	218	04.01-12.04	■
3.0 (ASN)		Gasolina	FWD	2976	162	220	09.01-12.04	■
2.5 TDI (AYM)		Diesel	FWD	2496	114	155	09.01-07.02	■
2.5 TDI (BCZ)		Diesel	FWD	2496	120	163	07.02-12.04	■
2.5 TDI (BDG)		Diesel	FWD	2496	120	163	07.02-12.04	■
2.5 TDI (BFC)		Diesel	FWD	2496	120	163	07.02-12.04	■
2.5 TDI		Diesel	RWD	2496	132	179	04.01-05.03	■
2.5 TDI quattro (AKE)		Diesel	4WD	2496	132	180	09.01-12.04	■
2.5 TDI quattro (BAU)		Diesel	4WD	2496	132	180	09.01-12.04	■
2.5 TDI quattro (BDH)		Diesel	4WD	2496	132	180	09.01-12.04	■
A4 III B7 Avant (8ED) 11.04-11.08					Estate (Compact executive car-D Segment)			
1.6 (ALZ)	PR 1KP	Gasolina	FWD	1595	75	102	11.04-06.08	■
1.8 T (BFB)	PR 1KP	Gasolina	FWD	1781	120	163	11.04-06.08	■
1.8 T quattro (BFB)	PR 1KP	Gasolina	4WD	1781	120	163	11.04-06.08	■
2.0 (ALT)	PR 1KP	Gasolina	FWD	1984	96	130	11.04-06.08	■
2.0 FSI	PR 1KP	Gasolina	FWD	1984	110	150	01.05-07.05	■
2.0 TFSI (BPJ)	PR 1KP	Gasolina	FWD	1984	125	170	10.06-06.08	■
2.0 TFSI (BYK)	PR 1KP	Gasolina	FWD	1984	125	170	10.06-06.08	■
2.0 TFSI quattro (BGB)	PR 1KP	Gasolina	4WD	1984	147	200	11.04-06.08	■
2.0 TFSI quattro (BPG)	PR 1KP	Gasolina	4WD	1984	147	200	11.04-06.08	■
2.0 TFSI quattro (BWE)	PR 1KP	Gasolina	4WD	1984	147	200	11.04-06.08	■
2.0 TFSI quattro (BWT)	PR 1KP	Gasolina	4WD	1984	147	200	11.04-06.08	■
1.9 TDI (BKE)	PR 1KP	Diesel	FWD	1896	85	116	11.04-06.08	■
1.9 TDI (BRB)	PR 1KP	Diesel	FWD	1896	85	116	11.04-06.08	■
2.0 TDI (BVG)	PR 1KP	Diesel	FWD	1968	89	121	09.05-09.06	■
2.0 TDI (BVF)	PR 1KP	Diesel	FWD	1968	93	126	11.05-11.06	■
2.0 TDI (BNA)	PR 1KP	Diesel	FWD	1968	100	136	11.04-06.08	■
2.0 TDI (BRF)	PR 1KP	Diesel	FWD	1968	100	136	11.04-06.08	■
2.0 TDI (BPW)	PR 1KP	Diesel	FWD	1968	103	140	11.04-06.08	■
2.0 TDI 16V (BLB)	PR 1KP	Diesel	FWD	1968	103	140	11.04-06.08	■
2.0 TDI 16V (BRE)	PR 1KP	Diesel	FWD	1968	103	140	11.04-06.08	■

LISTA DE APLICACIONES - BUYERS GUIDE

2.0 TDI quattro (BPW)	PR 1KP	Diesel	4WD	1968	103	140	01.06-06.08	■
2.0 TDI (BVA)	PR 1KP	Diesel	FWD	1968	120	163	06.06-06.08	■
2.0 TDI quattro (BVA)	PR 1KP	Diesel	4WD	1968	120	163	06.06-06.08	■
2.0 TDI (BRD)	PR 1KP	Diesel	FWD	1968	125	170	06.06-06.08	■
2.0 TDI quattro (BRD)	PR 1KP	Diesel	4WD	1968	125	170	06.06-06.08	■
A4 III B7 (8HE) 01.02-01.10					Convertible (Compact executive car-D Segment)			
1.8 T		Gasolina	FWD	1781	120	163	01.06-03.09	■
3.0 TDI quattro (ASB)		Diesel	4WD	2967	171	233	01.06-03.09	■
A4 III B7 (8EC) 11.04-01.09					Saloon (Compact executive car-D Segment)			
1.6 (ALZ)	PR 1KP	Gasolina	FWD	1595	75	102	11.04-06.08	■
1.8 T (BFB)	PR 1KP	Gasolina	FWD	1781	120	163	11.04-06.08	■
1.8 T quattro (BFB)	PR 1KP	Gasolina	4WD	1781	120	163	11.04-06.08	■
2.0 (ALT)	PR 1KP	Gasolina	FWD	1984	96	130	11.04-06.08	■
2.0 FSI	PR 1KP	Gasolina	FWD	1984	110	150	01.05-07.05	■
2.0 TFSI (BPJ)	PR 1KP	Gasolina	FWD	1984	125	170	10.06-06.08	■
2.0 TFSI (BYK)	PR 1KP	Gasolina	FWD	1984	125	170	10.06-06.08	■
1.9 TDI (BKE)	PR 1KP	Diesel	FWD	1896	85	116	11.04-06.08	■
1.9 TDI (BRB)	PR 1KP	Diesel	FWD	1896	85	116	11.04-06.08	■
2.0 TDI (BVG)	PR 1KP	Diesel	FWD	1968	89	121	09.05-09.06	■
2.0 TDI (BVF)	PR 1KP	Diesel	FWD	1968	93	126	11.05-11.06	■
2.0 TDI (BNA)	PR 1KP	Diesel	FWD	1968	100	136	11.04-06.08	■
2.0 TDI (BRF)	PR 1KP	Diesel	FWD	1968	100	136	11.04-06.08	■
2.0 TDI (BPW)	PR 1KP	Diesel	FWD	1968	103	140	11.04-06.08	■
2.0 TDI 16V (BLB)	PR 1KP	Diesel	FWD	1968	103	140	11.04-06.08	■
2.0 TDI 16V (BRE)	PR 1KP	Diesel	FWD	1968	103	140	11.04-06.08	■
2.0 TDI quattro (BPW)	PR 1KP	Diesel	4WD	1968	103	140	01.06-06.08	■
2.0 TDI (BVA)	PR 1KP	Diesel	FWD	1968	120	163	06.06-06.08	■
2.0 TDI quattro (BVA)	PR 1KP	Diesel	4WD	1968	120	163	06.06-06.08	■
2.0 TDI (BRD)	PR 1KP	Diesel	FWD	1968	125	170	06.06-06.08	■
2.0 TDI quattro (BRD)	PR 1KP	Diesel	4WD	1968	125	170	06.06-06.08	■
SEAT								
EXEO (3R2) 12.08-					Saloon (Compact executive car-D Segment)			
1.6 (ALZ)	PR 1KP	Gasolina	FWD	1595	75	102	03.09-09.10	■
1.8 T (CFMA)	PR 1KP	Gasolina	FWD	1781	110	150	12.08-05.10	■
1.8 TSI (CDHB)		Gasolina	FWD	1798	118	160	05.10-05.13	■
2.0 TFSI (BWE)	PR 1KP	Gasolina	FWD	1984	147	200	03.09-05.13	■
2.0 TDI (CAGC)	PR 1KP	Diesel	FWD	1968	88	120	12.08-05.13	■
2.0 TDI (CJCC)	PR 1KP	Diesel	FWD	1968	88	120	12.08-05.13	■
2.0 TDI (CAGA)	PR 1KP	Diesel	FWD	1968	105	143	12.08-05.13	■
2.0 TDI (CJCA)	PR 1KP	Diesel	FWD	1968	105	143	12.08-05.13	■
2.0 TDI (CAHA)	PR 1KP	Diesel	FWD	1968	125	170	02.09-05.13	■
2.0 TDI (CGLB)	PR 1KP	Diesel	FWD	1968	125	170	02.09-05.13	■
EXEO Station Wagon (3R5) 05.09-					Estate (Compact executive car-D Segment)			
1.8 TSI (CDHB)		Gasolina	FWD	1798	118	160	05.10-05.13	■
2.0 TDI (CAHA)		Diesel	FWD	1968	125	170	05.09-05.13	■
2.0 TDI (CGLB)		Diesel	FWD	1968	125	170	05.09-05.13	■