

LISTA DE APLICACIONES - BUYERS GUIDE

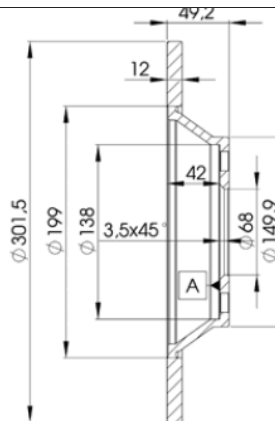
78BD5313-2



8 424073 146953

Weight: 10.980

O.E.M.	MAKE
4F0 615 601 E	AUDI



78BD5313-2



Ø301.2x12x49.2

MAKE
AUDI
AUDI (FAW)
BYD



Trac.	CC	Kw	CV
-------	----	----	----



Front / Rear

AUDI

A6 III C6 Avant (4F5) 11.04-08.11

Estate (Executive car-E Segment)

2.0 TFSI (BPJ)		Gasolina	FWD	1984	125	170	06.05-08.11	■
2.4 (BDW)		Gasolina	FWD	2393	130	177	03.05-10.08	■
2.4 quattro (BDW)		Gasolina	4WD	2393	130	177	03.05-10.08	■
2.8 FSI (CCDA)	PR 1KD, PR 1KQ	Gasolina	FWD	2773	140	190	10.08-08.11	■
2.8 FSI quattro (CCDA)	PR 1KD, PR 1KQ	Gasolina	4WD	2773	140	190	10.08-08.11	■
2.8 FSI (BDX)		Gasolina	FWD	2773	154	210	11.06-10.08	■
2.8 FSI quattro (BDX)		Gasolina	4WD	2773	154	210	06.07-10.08	■
2.8 FSI (CCEA)	PR 1KD, PR 1KQ	Gasolina	FWD	2773	162	220	10.08-08.11	■
2.8 FSI quattro (CCEA)	PR 1KD, PR 1KQ	Gasolina	4WD	2773	162	220	10.08-08.11	■
3.0 (BBJ)		Gasolina	FWD	2976	160	218	03.05-05.06	■
3.0 quattro (BBJ)		Gasolina	4WD	2976	160	218	03.05-05.06	■
3.0 TFSI quattro (CAJA)	PR 1KD, PR 1KQ	Gasolina	4WD	2995	213	290	10.08-08.11	■
3.0 TFSI quattro (CCAA)	PR 1KD, PR 1KQ	Gasolina	4WD	2995	220	299	10.08-08.11	■
3.2 FSI (AUK)		Gasolina	FWD	3123	188	255	03.05-10.08	■
3.2 FSI quattro (AUK)		Gasolina	4WD	3123	188	255	03.05-10.08	■
3.2 FSI quattro (BKH)		Gasolina	4WD	3123	188	255	03.05-10.08	■
2.0 TDI (BVG)		Diesel	FWD	1968	89	121	09.05-06.06	■
2.0 TDI (BNA)		Diesel	FWD	1968	100	136	06.05-08.11	■
2.0 TDI (BRF)		Diesel	FWD	1968	100	136	06.05-08.11	■
2.0 TDI (CAGB)		Diesel	FWD	1968	100	136	06.05-08.11	■
2.0 TDI (BLB)		Diesel	FWD	1968	103	140	06.05-10.08	■
2.0 TDI (BRE)		Diesel	FWD	1968	103	140	06.05-10.08	■
2.0 TDI (CAHB)	PR 1KD, PR 1KQ	Diesel	FWD	1968	120	163	04.09-08.11	■

LISTA DE APLICACIONES - BUYERS GUIDE

2.0 TDI (CAHA)	PR 1KD	Diesel	FWD	1968	125	170	10.08-08.11	■
2.7 TDI (BSG)		Diesel	FWD	2698	120	163	03.05-08.11	■
2.7 TDI (CANB)		Diesel	FWD	2698	120	163	03.05-08.11	■
2.7 TDI quattro (BSG)		Diesel	4WD	2698	120	163	06.05-08.11	■
2.7 TDI quattro (CAND)		Diesel	4WD	2698	120	163	06.05-08.11	■
2.7 TDI (BPP)		Diesel	FWD	2698	132	180	03.05-10.08	■
2.7 TDI quattro (BPP)		Diesel	4WD	2698	132	180	11.04-10.08	■
2.7 TDI (CANA)	PR 1KD	Diesel	FWD	2698	140	190	10.08-08.11	■
2.7 TDI quattro (CANC)	PR 1KD	Diesel	4WD	2698	140	190	10.08-08.11	■
3.0 TDI quattro (BNG)		Diesel	4WD	2967	155	211	03.05-08.11	■
3.0 TDI quattro (CDYB)		Diesel	4WD	2967	155	211	03.05-08.11	■
3.0 TDI quattro (BMK)		Diesel	4WD	2967	165	225	03.05-05.06	■
3.0 TDI		Diesel	FWD	2967	171	232	06.06-08.11	■
3.0 TDI quattro (CDYA)	PR 1KD	Diesel	4WD	2967	176	240	10.08-08.11	■
3.0 TDI quattro (CDYC)	PR 1KD	Diesel	4WD	2967	176	240	10.08-08.11	■
A6 III C6 (4F2) 04.04-08.11					Saloon (Executive car-E Segment)			
2.0 TFSI (BPJ)		Gasolina	FWD	1984	125	170	06.05-03.11	■
2.0 TFSI (BYK)		Gasolina	FWD	1984	125	170	06.05-03.11	■
2.4 (BDW)		Gasolina	FWD	2393	130	177	05.04-10.08	■
2.4 quattro (BDW)		Gasolina	4WD	2393	130	177	01.05-10.08	■
2.8 V6	PR 1KD, PR 1KQ	Gasolina	FWD	2771	142	193	07.08-10.08	■
2.8 FSI (CCDA)	PR 1KD, PR 1KQ	Gasolina	FWD	2773	140	190	10.08-03.11	■
2.8 FSI quattro (CCDA)	PR 1KD, PR 1KQ	Gasolina	4WD	2773	140	190	10.08-03.11	■
2.8 FSI (BDX)		Gasolina	FWD	2773	154	210	11.06-10.08	■
2.8 FSI quattro (BDX)		Gasolina	4WD	2773	154	210	06.07-10.08	■
2.8 FSI (CCEA)	PR 1KD, PR 1KQ	Gasolina	FWD	2773	162	220	10.08-03.11	■
2.8 FSI quattro (CCEA)	PR 1KD, PR 1KQ	Gasolina	4WD	2773	162	220	10.08-03.11	■
3.0 (BBJ)		Gasolina	FWD	2976	160	218	08.04-05.06	■
3.0 quattro (BBJ)		Gasolina	4WD	2976	160	218	05.04-05.06	■
3.0 TFSI quattro (CAJA)	PR 1KD, PR 1KQ	Gasolina	4WD	2995	213	290	10.08-03.11	■
3.0 TFSI quattro (CCAA)	PR 1KD, PR 1KQ	Gasolina	4WD	2995	220	299	10.08-03.11	■
3.2 FSI quattro (BYU)		Gasolina	4WD	3123	183	249	09.06-10.08	■
3.2 FSI (AUK)		Gasolina	FWD	3123	188	255	05.04-05.09	■
3.2 FSI (BKH)		Gasolina	FWD	3123	188	255	05.04-05.09	■
3.2 FSI quattro (AUK)		Gasolina	4WD	3123	188	255	05.04-10.08	■
3.2 FSI quattro (BKH)		Gasolina	4WD	3123	188	255	05.04-10.08	■
2.0 TDI (BVG)		Diesel	FWD	1968	89	121	09.05-06.06	■
2.0 TDI (BNA)		Diesel	FWD	1968	100	136	07.04-03.11	■
2.0 TDI (BRF)		Diesel	FWD	1968	100	136	07.04-03.11	■
2.0 TDI (CAGB)		Diesel	FWD	1968	100	136	07.04-03.11	■
2.0 TDI (BLB)		Diesel	FWD	1968	103	140	07.04-10.08	■
2.0 TDI (BRE)		Diesel	FWD	1968	103	140	07.04-10.08	■
2.0 TDI (CAHB)	PR 1KD	Diesel	FWD	1968	120	163	04.09-03.11	■
2.0 TDI (CAHA)	PR 1KD	Diesel	FWD	1968	125	170	11.08-03.11	■
2.7 TDI (BSG)		Diesel	FWD	2698	120	163	11.04-03.11	■
2.7 TDI (CANB)		Diesel	FWD	2698	120	163	11.04-03.11	■
2.7 TDI quattro (BSG)		Diesel	4WD	2698	120	163	06.05-03.11	■
2.7 TDI quattro (CAND)		Diesel	4WD	2698	120	163	06.05-03.11	■
2.7 TDI (BPP)		Diesel	FWD	2698	132	180	11.04-10.08	■
2.7 TDI quattro (BPP)		Diesel	4WD	2698	132	180	11.04-10.08	■
2.7 TDI (CANA)	PR 1KD	Diesel	FWD	2698	140	190	10.08-03.11	■

LISTA DE APLICACIONES - BUYERS GUIDE

2.7 TDI quattro (CANC)	PR 1KD	Diesel	4WD	2698	140	190	10.08-03.11	■
3.0 TDI quattro (BNG)		Diesel	4WD	2967	155	211	05.04-03.11	■
3.0 TDI quattro (CDYB)		Diesel	4WD	2967	155	211	05.04-03.11	■
3.0 TDI quattro (BMK)		Diesel	4WD	2967	165	225	05.04-05.06	■
3.0 TDI		Diesel	RWD	2967	171	232	06.06-03.11	■
3.0 TDI quattro (ASB)		Diesel	4WD	2967	171	233	06.06-10.08	■
3.0 TDI quattro (CDYA)	PR 1KD	Diesel	4WD	2967	176	240	10.08-03.11	■
3.0 TDI quattro (CDYC)	PR 1KD	Diesel	4WD	2967	176	240	10.08-03.11	■

AUDI (FAW)

A6L II C6 (4Z8) 03.05-12.12

Saloon (Executive car-E Segment)

2.8	Gasolina	FWD	2773	162	220	01.08-12.12	■
-----	----------	-----	------	-----	-----	-------------	---

BYD

F0 09.08-

Hatchback ()

1.0 (371QA)	Gasolina	FWD	998	50	68	09.08-12.19	■
-------------	----------	-----	-----	----	----	-------------	---