

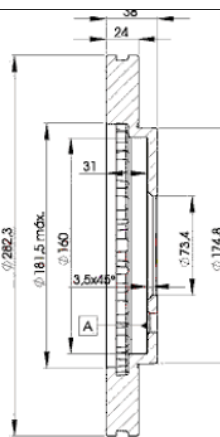
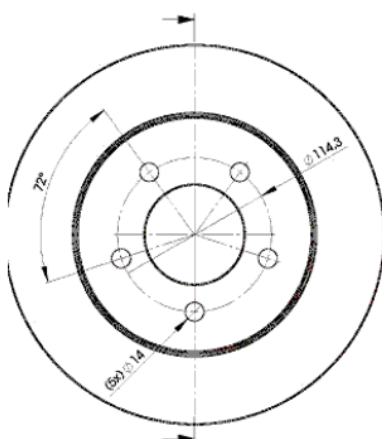
LISTA DE APLICACIONES - BUYERS GUIDE

78BD5347-2



Weight: 12.670

O.E.M.	MAKE
4 815 797	PLYMOUTH
4721820	CHRYSLER
4721820 AE	CHRYSLER
4815797	DODGE



78BD5347-2

E1 90R-02C0074/1183



Ø282x24x38

MAKE
CHRYSLER
DODGE
PLYMOUTH



Trac.	CC	Kw	CV	
				Front / Rear

CHRYSLER

CARAVAN 09.94-12.00

2.4	Gasolina	FWD	2429	110	150	01.95-12.00	■
2.4	Gasolina	FWD	2429	111	151	01.95-08.00	■

GRAND VOYAGER III VAN (GS) 01.95-12.01

2.4	Gasolina	FWD	2429	111	151	01.98-12.01	■
3.3	Gasolina	FWD	3301	116	158	01.95-03.01	■
2.5 TD	Diesel	FWD	2499	85	116	01.95-03.01	■

PROWLER 09.98-12.02

3.5 (EGJ)			Gasolina	RWD	3518	189	257	09.00-12.02	■
-----------	--	--	----------	-----	------	-----	-----	-------------	---

VOYAGER III / GRAND VOYAGER III (GS_, NS_) 01.95-03.01

2.0 i (C00)	Gasolina	FWD	1995	98	133	01.95-03.01	■
2.4 AWD (EDZ)	Gasolina	4WD	2429	111	151	02.97-03.01	■
2.4 i (B00)	Gasolina	FWD	2429	111	151	01.95-03.01	■
3.0 (EFA)	Gasolina	FWD	2972	112	152	01.95-03.01	■
3.3 i (R00)	Gasolina	FWD	3301	116	158	01.95-03.01	■
3.3 i	Gasolina	FWD	3301	134	180	01.95-03.01	■
3.8 (EGH)	Gasolina	FWD	3778	121	165	01.95-09.00	■
3.8 i AWD (L00)	Gasolina	4WD	3778	122	166	01.95-03.01	■
3.8 (EGH)	Gasolina	FWD	3778	131	178	10.97-09.00	■
3.8 i AWD (EGH)	Gasolina	4WD	3778	131	178	01.95-03.01	■
3.8 (EGH)	Gasolina	FWD	3778	134	182	09.97-12.00	■
3.8 AWD	Gasolina	4WD	3778	134	182	09.97-12.00	■
2.5 TD (425 CLIRS/X)	Diesel	FWD	2499	85	116	01.95-03.01	■

LISTA DE APLICACIONES - BUYERS GUIDE

2.5 TD (ENC)		Diesel	FWD	2499	85	116	01.95-03.01	■
2.5 TDiC AWD (ENC)		Diesel	4WD	2499	85	116	10.95-03.01	■
VOYAGER III VAN (GS_) 01.95-12.01					Box Body/MPV ()			
2.4 (GSHY52)		Gasolina	FWD	2429	111	151	01.95-03.01	■
3.3 (GSHY52)		Gasolina	FWD	3301	116	158	01.95-03.01	■
3.8 AWD (GSHC52)		Gasolina	4WD	3778	122	166	10.95-09.97	■
2.5 TD (GSHY52, GSHZ52)		Diesel	FWD	2499	85	116	01.95-03.01	■
VOYAGER IV / GRAND VOYAGER IV / TOWN & COUNTRY IV (RG, RS) 09.99-12.08					MPV (Large MPV-M1 Segment)			
3.0		Gasolina	FWD	2972	112	152	09.99-12.00	■
DODGE								
CARAVAN III 01.95-03.01					MPV (Large MPV-M1 Segment)			
2.0 i	01/97-, -12/00, Rim 15, Rim 16	Gasolina	FWD	1995	98	133	01.95-03.01	■
2.4 i (EDZ)	01/97-, -12/00, Rim 15, Rim 16	Gasolina	FWD	2429	111	151	01.95-03.01	■
3.0 (EFA)	01/97-, Rim 15, Rim 16	Gasolina	FWD	2972	112	152	01.95-06.00	■
3.3 i (EGP)	01/97-, -12/00, Rim 15, Rim 16	Gasolina	FWD	3301	116	158	01.95-03.01	■
3.8 i (EGH)	01/97-, -12/00, Rim 15, Rim 16	Gasolina	FWD	3778	122	166	01.95-03.01	■
3.8 i AWD (EGH)	01/97-, -12/00, Rim 15, Rim 16	Gasolina	4WD	3778	122	166	01.95-03.01	■
3.8 i (EGH)	01/97-, -12/00, Rim 15, Rim 16	Gasolina	FWD	3778	131	178	01.95-03.01	■
3.8 i AWD (EGH)	01/97-, -12/00, Rim 15, Rim 16	Gasolina	4WD	3778	131	178	01.95-03.01	■
2.5 TD (ENC)	01/97-, -12/00, Rim 15, Rim 16	Diesel	FWD	2499	85	116	01.95-03.01	■
CARAVAN III VAN (NS) 01.95-03.01					Box Body/MPV (LCVs-N1 Segment)			
3.8		Gasolina	FWD	3778	122	166	10.95-06.00	■
3.8		Gasolina	FWD	3778	131	178	10.95-06.00	■
PLYMOUTH								
PROWLER (U.S.A.) 09.96-12.01					Convertible (Sports car-S Segment)			
3.5 (EGJ)		Gasolina	RWD	3518	189	257	09.98-12.01	■
VOYAGER III 01.95-03.01					MPV (Large MPV-M1 Segment)			
2.0 i	11/95-, Rim 15	Gasolina	FWD	1996	98	133	01.95-03.01	■
2.4 i (EDZ)	11/95-, Rim 15	Gasolina	FWD	2429	111	151	01.95-03.01	■
3.0 (EFA)		Gasolina	FWD	2972	112	152	01.95-03.01	■
3.3 i (EGM)		Gasolina	FWD	3301	116	158	01.95-03.01	■
3.3 Flex-Fuel (EGM)		Gasol./Etanol	FWD	3301	116	158	01.98-03.01	■
2.5 TD (ENC)		Diesel	FWD	2499	85	116	01.95-03.01	■