

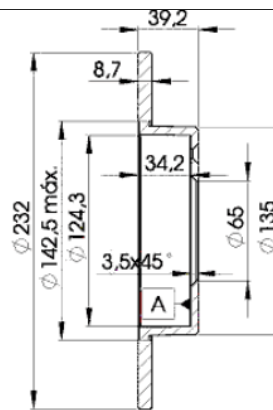
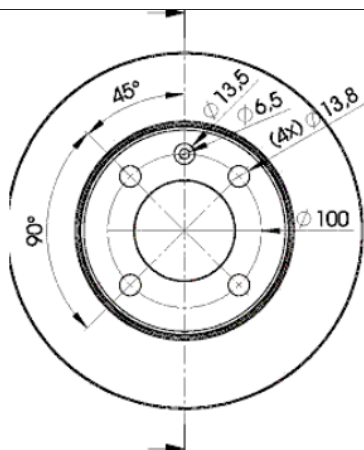
LISTA DE APLICACIONES - BUYERS GUIDE

78BD5608-2



Weight: 5.530

O.E.M.	MAKE
6N0 615 601 A	VW
6N0 615 601 B	VW



78BD5608-2

E1 90R-02C0100/0890



Ø232x8.7x39.5

MAKE
SEAT
VW



Trac.	CC	Kw	CV
-------	----	----	----



Front / Rear

SEAT

AROSA (6H1) 05.97-06.04

Hatchback (City car-A Segment)

1.4 (AEX)		Gasolina	FWD	1389	44	60	05.97-06.04	■
1.4 (AKK)		Gasolina	FWD	1389	44	60	05.97-06.04	■
1.4 (AKV)		Gasolina	FWD	1389	44	60	05.97-06.04	■
1.4 (ANW)		Gasolina	FWD	1389	44	60	05.97-06.04	■
1.4 (APQ)		Gasolina	FWD	1389	44	60	05.97-06.04	■
1.4 (AUD)		Gasolina	FWD	1389	44	60	05.97-06.04	■
1.4 16V (AFK)		Gasolina	FWD	1390	74	100	01.00-06.04	■
1.4 16V (AQQ)		Gasolina	FWD	1390	74	100	01.00-06.04	■
1.4 16V (AUB)		Gasolina	FWD	1390	74	100	01.00-06.04	■
1.7 SDI (AKU)	01/01-	Diesel	FWD	1716	44	60	08.97-06.04	■

CORDOBA (6K1, 6K2) 02.93-12.02

Saloon (Supermini car-B Segment)

1.8 T 20V Cupra (AQX)		Gasolina	FWD	1781	115	156	07.00-10.02	■
1.8 T 20V Cupra (AYP)		Gasolina	FWD	1781	115	156	07.00-10.02	■

CORDOBA II (6K5) 08.00-12.02

Estate Van (Supermini car-B Segment)

1.9 TDI		Diesel	FWD	1896	81	110	08.00-12.02	■
---------	--	--------	-----	------	----	-----	-------------	---

CORDOBA II (6K2) 06.99-10.02

Saloon (Supermini car-B Segment)

1.9 TDI		Diesel	FWD	1896	66	90	06.99-10.02	■
1.9 TDI		Diesel	FWD	1896	81	110	06.99-10.02	■

CORDOBA II Vario (6K5) 06.99-12.02

Estate (Supermini car-B Segment)

1.9 TDI		Diesel	FWD	1896	81	110	06.99-12.02	■
---------	--	--------	-----	------	----	-----	-------------	---

LISTA DE APLICACIONES - BUYERS GUIDE

CORDOBA Vario (6K5) 07.96-12.02					Estate (Supermini car-B Segment)			
1.9 TDI (AFN)		Diesel	FWD	1896	81	110	07.97-12.02	■
1.9 TDI (ASV)		Diesel	FWD	1896	81	110	07.97-12.02	■
IBIZA II (6K1) 03.93-05.02					Hatchback (Supermini car-B Segment)			
1.8 T 20V Cupra (AQX)	vehicles with ABS	Gasolina	FWD	1781	115	156	07.00-02.02	■
1.8 T 20V Cupra (AYP)	vehicles with ABS	Gasolina	FWD	1781	115	156	07.00-02.02	■
1.9 TDI (AFN)		Diesel	FWD	1896	81	110	02.97-02.02	■
1.9 TDI (ASV)		Diesel	FWD	1896	81	110	02.97-02.02	■
1.9 TDI		Diesel	RWD	1896	81	110	08.99-02.02	■
IBIZA III (6L1) 02.02-11.09					Hatchback (Supermini car-B Segment)			
1.4 16V (AUB)	-05/02	Gasolina	FWD	1390	74	100	02.02-11.09	■
1.4 16V (BBZ)	-05/02	Gasolina	FWD	1390	74	100	02.02-11.09	■
VW								
LUPO (6X1, 6E1) 09.98-07.05					Hatchback (City car-A Segment)			
1.4 16V (AFK)		Gasolina	FWD	1390	74	100	08.99-07.05	■
1.4 16V (ANM)		Gasolina	FWD	1390	74	100	08.99-07.05	■
1.4 16V (AQQ)		Gasolina	FWD	1390	74	100	08.99-07.05	■
1.4 16V (AUB)		Gasolina	FWD	1390	74	100	08.99-07.05	■
1.4 FSI (ARR)		Gasolina	FWD	1390	77	105	02.01-07.05	■
1.6 GTI (AVY)		Gasolina	FWD	1598	92	125	09.00-07.05	■
POLO III (6N1) 10.94-10.99					Hatchback (Supermini car-B Segment)			
1.4 16V (AHW)	vehicles with ABS	Gasolina	FWD	1390	55	75	10.99-09.01	■
1.4 16V (APE)	vehicles with ABS	Gasolina	FWD	1390	55	75	10.99-09.01	■
1.4 16V (AUA)	vehicles with ABS	Gasolina	FWD	1390	55	75	10.99-09.01	■
1.4 16V (AFK)		Gasolina	FWD	1390	74	101	10.99-09.01	■
1.4 16V (AQQ)		Gasolina	FWD	1390	74	101	10.99-09.01	■
1.4 16V (AUB)		Gasolina	FWD	1390	74	101	10.99-09.01	■
100 1.4 16V (AFH)		Gasolina	FWD	1390	74	100	04.96-10.99	■
1.6 16V GTI (ARC)		Gasolina	FWD	1598	92	125	10.99-09.01	■
1.6 16V GTI (AVY)		Gasolina	FWD	1598	92	125	10.99-09.01	■
1.4 TDI (AMF)		Diesel	FWD	1422	55	75	10.99-09.01	■
1.4 TDI		Diesel	FWD	1422	66	90	01.00-10.00	■
POLO III CLASSIC / DERBY / FLIGHT (6V2) 01.95-11.09					Saloon (Supermini car-B Segment)			
54 1.4 (ANX)		Gasolina	FWD	1390	40	54	01.98-08.99	■
1.4		Gasolina	FWD	1390	62	84	05.96-07.02	■
1.6		Gasolina	FWD	1595	65	88	05.96-09.01	■
90 1.8 (ABS)		Gasolina	FWD	1781	66	90	01.97-09.01	■
90 1.8 (ADD)		Gasolina	FWD	1781	66	90	01.97-09.01	■
90 1.8 (ADZ)		Gasolina	FWD	1781	66	90	01.97-09.01	■
2.0 (ADC)		Gasolina	FWD	1984	85	116	08.99-09.01	■
110 1.9 TDI (AFN)	10/99-	Diesel	FWD	1896	81	110	06.98-01.02	■
110 1.9 TDI (ASV)	10/99-	Diesel	FWD	1896	81	110	06.98-01.02	■