

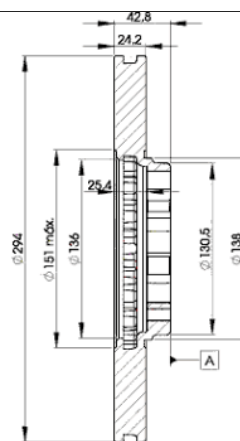
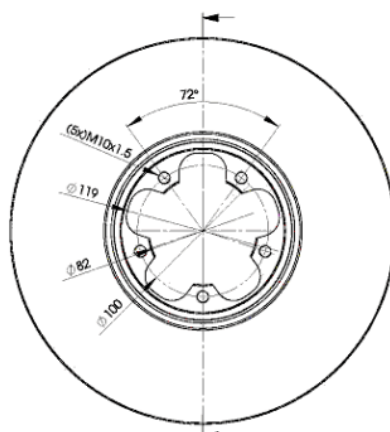
# LISTA DE APLICACIONES - BUYERS GUIDE

## 78BD5613-2



Weight: 14.120

O.E.M.	MAKE
1 387 781	FORD
4 041 428	FORD
YC1W-1125-BA	FORD



## 78BD5613-2

E1 90R-02C0452/0080



Ø294x24x43

MAKE

FORD



Trac.	CC	Kw	CV
-------	----	----	----



Front / Rear

### FORD

#### TRANSIT IV (FD\_, FB\_, FS\_, FZ\_, FC\_) 01.00-05.06

#### Bus (Minibus-M2-Segment)

2.3 16V RWD (F_B_, F_C_, F_A_) (E5FA)	Gasolina	RWD	2295	107	146	08.00-05.06	■
2.3 16V RWD (F_B_, F_C_, F_A_) (E5FC)	Gasolina	RWD	2295	107	146	08.00-05.06	■
2.4 DI RWD (F_B_, F_C_) (F4FA)	Diesel	RWD	2402	55	75	01.00-05.06	■
2.4 DI (F_B_, F_C_, F_A_) (D2FA)	Diesel	RWD	2402	66	90	01.00-05.06	■
2.4 DI (F_B_, F_C_, F_A_) (D2FB)	Diesel	RWD	2402	66	90	01.00-05.06	■
2.4 TDE (FXFA)	Diesel	RWD	2402	85	115	03.04-05.06	■
2.4 DI RWD (F_B_, F_C_, F_A_) (D4FA)	Diesel	RWD	2402	88	120	01.00-05.06	■
2.4 TDE (F_C_, F_B_, F_A_) (DOFA)	Diesel	RWD	2402	92	125	07.01-05.06	■
2.4 TDCi (H9FA)	Diesel	RWD	2402	101	137	03.04-05.06	■

#### TRANSIT IV (FM\_, FN\_) 01.00-05.06

#### Platform/Chassis (LCVs-N1 Segment)

2.3	Gasolina	RWD	2295	105	143	03.01-03.06	■
2.3 16V (F_A_, F_B_, F_C_, F_D_) (E5FA)	Gasolina	RWD	2295	107	146	04.01-05.06	■
2.3 16V (F_A_, F_B_, F_C_, F_D_) (E5FC)	Gasolina	RWD	2295	107	146	04.01-05.06	■
2.3 BiFuel	Gasol./G as (LPG)	RWD	2295	105	143	03.01-03.06	■
2.4 DI (F_A_, F_B_, F_C_, F_D_) (F4FA)	Diesel	RWD	2402	55	75	01.00-05.06	■
2.4 DI (F_A_, F_B_, F_C_, F_D_) (D2FA)	Diesel	RWD	2402	66	90	01.00-05.06	■
2.4 DI (F_A_, F_B_, F_C_, F_D_) (D2FB)	Diesel	RWD	2402	66	90	01.00-05.06	■
2.4 DI (F_A_, F_B_, F_C_, F_D_) (D2FE)	Diesel	RWD	2402	66	90	01.00-05.06	■
2.4 TDE (FXFA)	Diesel	RWD	2402	85	115	03.04-05.06	■
2.4 DI (F_A_, F_B_, F_C_, F_D_) (D4FA)	Diesel	RWD	2402	88	120	01.00-05.06	■
2.4 TDE (DOFA)	Diesel	RWD	2402	92	125	07.01-05.06	■
2.4 TDCi (H9FA)	Diesel	RWD	2402	101	137	03.04-05.06	■

# LISTA DE APLICACIONES - BUYERS GUIDE

TRANSIT IV (FA__ ) 01.00-05.06					Van (LCVs-N1 Segment)			
2.3 16V RWD (FAA_, FAB_, FAC_) (E5FA)	Gasolina	RWD	2295	107	146	04.01-05.06	■	
2.3 16V RWD (FAA_, FAB_, FAC_) (E5FC)	Gasolina	RWD	2295	107	146	04.01-05.06	■	
2.3 BiFuel (E5FC)	Gasol./Gas (LPG)	RWD	2295	105	143	03.01-03.06	■	
2.4 DI RWD (FAA_, FAB_, FAC_, FAD_) (F4FA)	Diesel	RWD	2402	55	75	01.00-05.06	■	
2.4 DI (FAA_, FAB_, FAC_, FAD_) (D2FA)	Diesel	RWD	2402	66	90	01.00-05.06	■	
2.4 DI (FAA_, FAB_, FAC_, FAD_) (D2FB)	Diesel	RWD	2402	66	90	01.00-05.06	■	
2.4 TDE (FXFA)	Diesel	RWD	2402	85	115	03.04-05.06	■	
2.4 DI RWD (FAA_, FAB_, FAC_, FAD_) (D4FA)	Diesel	RWD	2402	88	120	01.00-05.06	■	
2.4 TDE (DOFA)	Diesel	RWD	2402	92	125	07.01-05.06	■	
2.4 TDCi (H9FA)	Diesel	RWD	2402	101	137	03.04-05.06	■	