

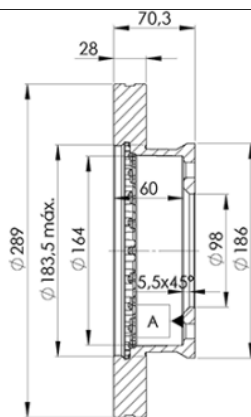
LISTA DE APLICACIONES - BUYERS GUIDE

78BD6032-2



Weight: 17.996

O.E.M.	MAKE
1 490 412	FORD
2M34-1027-AA	FORD
4 429 562	FORD
6M34-1027-DA	FORD
UM51-33-251	MAZDA
UR61-33-251	MAZDA



78BD6032-2

E1 90R-02C0452/0101



Ø289x28x70.3

MAKE
FORD
FORD ASIA & OCEANIA
FORD AUSTRALIA
MAZDA



Trac.	CC	Kw	CV
-------	----	----	----



Front / Rear

FORD

RANGER (ER, EQ, R_) 04.97-12.11

Pickup (Pick-Up Truck)

2.3	Gasolina	RWD	2261	105	143	10.05-06.06	■
2.3	Gasolina	RWD	2261	114	155	10.01-09.05	■
2.3 4x4	Gasolina	4WD	2261	114	155	10.01-09.05	■
4.0 4x4	Gasolina	4WD	4000	152	207	10.05-06.06	■
2.5 D 4x4 (WL)	Diesel	4WD	2499	57	78	10.99-04.02	■
2.5 TDdi 4x4	Diesel	4WD	2499	86	117	04.02-09.05	■
2.5 TD 4x4 (WL-T)	Diesel	4WD	2500	62	84	04.02-06.06	■
2.5 TD 4x4 (WL-T)	Diesel	4WD	2500	80	109	10.99-06.06	■

RANGER II (ET) 01.05-07.12

Pickup (Pick-Up Truck)

2.3 4x4	Gasolina	4WD	2261	109	148	01.06-07.12	■
4.0 4x4	Gasolina	4WD	4009	154	209	03.06-12.11	■
2.5 TDI 4x4	Diesel	4WD	2499	80	109	06.07-07.12	■
2.5 TDCi 4x4 (WLAA)	Diesel	4WD	2499	105	143	05.06-07.12	■
3.0 TDCi 4x4 (WEC)	Diesel	4WD	2953	115	156	05.06-07.12	■
3.0 TDCi	Diesel	RWD	2974	115	156	10.05-12.09	■

FORD ASIA & OCEANIA

EVEREST I-II / ENDEAVOUR (25N_) 05.03-

Closed Off-Road Vehicle (Compact SUV-J Segment)

2.5 TD	Diesel	RWD	2499	81	110	05.03-	■
2.5 TD	Diesel	RWD	2499	81	110	05.03-	■
2.5 TD	Diesel	RWD	2499	81	110	05.03-	■
2.5 TD	Diesel	RWD	2499	81	110	05.03-	■
2.5 TD	Diesel	RWD	2499	85	116	05.03-	■

LISTA DE APLICACIONES - BUYERS GUIDE

2.5 TD		Diesel	RWD	2499	88	120	05.03-08.06	■
2.5 TD		Diesel	RWD	2499	88	120	05.03-08.06	■
2.5 TD		Diesel	RWD	2499	89	121	05.03-08.06	■
2.5 TD		Diesel	RWD	2499	105	143	09.06-	■
2.5 TD		Diesel	RWD	2499	105	143	09.06-	■
2.5 TDCi		Diesel	RWD	2499	105	143	01.10-	■
3.0 TD		Diesel	RWD	2953	115	156	08.06-	■
3.0 TDCi		Diesel	RWD	2953	115	156	01.10-	■
3.0 TDCi		Diesel	RWD	2953	115	156	01.10-	■
RANGER II (PK, PJ) 06.05-12.11					Pickup (Pick-Up Truck)			
2.5 TDdi (WLC)		Diesel	RWD	2499	105	143	11.06-11.11	■
FORD AUSTRALIA								
RANGER (PJ) 11.06-03.09					Pickup (Pick-Up Truck)			
2.5 TDdi		Diesel	RWD	2500	105	143	11.06-03.09	■
2.5 TDdi		Diesel	RWD	2500	105	143	11.06-03.09	■
2.5 TDdi		Diesel	RWD	2500	105	143	03.09-11.11	■
3.0		Diesel	RWD	2953	115	156	11.06-03.09	■
3.0 TD (WEAT)		Diesel	RWD	2953	115	156	11.06-03.09	■
3.0 TDdi		Diesel	RWD	2953	115	156	03.09-11.11	■
3.0 TDdi		Diesel	RWD	2953	115	156	03.09-11.11	■
RANGER (PJ) 11.06-03.09					Platform/Chassis (LCVs-N1 Segment)			
2.5 TDdi		Diesel	RWD	2500	105	143	11.06-03.09	■
2.5 TDdi		Diesel	RWD	2500	105	143	03.09-11.11	■
3.0 TDdi		Diesel	RWD	2953	115	156	03.09-11.11	■
MAZDA								
B-SERIE V (MJ) 11.05-11.06					Pickup (Pick-Up Truck)			
4.0 i		Gasolina	FWD	4009	154	209	11.05-11.06	■
4.0 i		Gasolina	FWD	4009	154	209	11.05-11.06	■
B-SERIE V (UN) 02.99-11.06					Platform/Chassis (LCVs-N1 Segment)			
4.0		Gasolina	FWD	4009	154	209	11.05-11.06	■
2.5 TD 4x4		Diesel	4WD	2499	86	117	02.99-03.05	■
BT-50 (CD, UN) 08.06-12.15					Pickup (Pick-Up Truck)			
2.6 4x4 (G6Y1)		Gasolina	4WD	2606	92	125	10.06-12.15	■
2.6 4x4 (G6Y1)		Gasolina	4WD	2606	115	156	10.06-12.15	■
2.5 TDI 4x4		Diesel	4WD	2499	81	110	08.06-12.15	■
2.5 MRZ-CD 4x4 (UNY0W3) (WLAA)		Diesel	4WD	2499	105	143	12.06-12.15	■
3.0 CDVi 4x4 (UNY0E3) (WEAT)		Diesel	4WD	2953	115	156	10.06-12.15	■
BT-50 (CD, UN) 08.06-					Platform/Chassis (LCVs-N1 Segment)			
2.6		Gasolina	FWD	2605	92	125	10.06-	■
2.6		Gasolina	FWD	2605	115	156	10.06-	■
2.5 TDI		Diesel	RWD	2499	81	110	08.06-	■
3.0 CDVi 4x4 (UNY0E3) (WEAT)		Diesel	4WD	2953	115	156	12.06-	■