

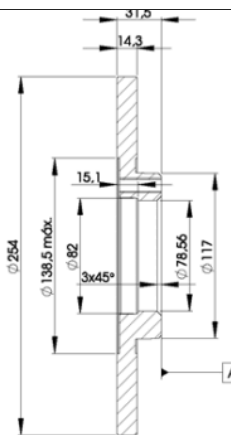
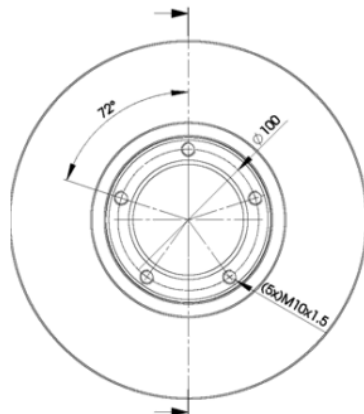
LISTA DE APLICACIONES - BUYERS GUIDE

78BD6055-2



Weight: 10.652

O.E.M.	MAKE
5 022 676	FORD
6 166 055	FORD



78BD6055-2



Ø254x14.3x31.5

MAKE

FORD



Trac.	CC	Kw	CV
-------	----	----	----



Front / Rear

FORD

TRANSIT III (T_ _) 10.85-09.92

Bus (Minibus-M2-Segment)

1.6 (TBL, TES) (LAT)	Type 80-120	Gasolina	RWD	1593	46	63	12.85-01.89	■
1.6	Type 80-120	Gasolina	FWD	1598	62	84	10.86-07.87	■
2.0 L (NAW)	Type 80-120	Gasolina	RWD	1993	56	76	10.85-03.91	■
2.0 L (NAX)	Type 80-120	Gasolina	RWD	1993	56	76	10.85-03.91	■
2.0 Cat (TBS, TCL, TCS) (N6T)	Type 80-120	Gasolina	RWD	1993	57	78	12.85-09.92	■
2.0 (N6TS)	Type 80-120	Gasolina	RWD	1993	60	82	10.85-03.91	■
2.0 (TBS, TCL, TCS, TEL, TES) (NAT)	Type 80-120	Gasolina	RWD	1994	57	78	11.85-09.92	■
2.0 (TBS, TCL, TCS, TEL, TES) (NAV)	Type 80-120	Gasolina	RWD	1994	57	78	11.85-09.92	■
2.5 D (TBS, TCL, TCS, TEL, TES) (4AB)	Type 80-120	Diesel	RWD	2496	50	68	12.85-01.89	■
2.5 D (TBS, TEL, TES) (4BA)	Type 80-120	Diesel	RWD	2496	52	71	09.88-09.92	■
2.5 D (TBS, TEL, TES) (4CA)	Type 80-120	Diesel	RWD	2496	52	71	09.88-09.92	■
2.5 D (4AE)		Diesel	RWD	2496	60	82	12.85-01.89	■

TRANSIT III (T_ _) 10.85-09.92

Platform/Chassis (LCVs-N1 Segment)

1.6	Type 80-120	Gasolina	FWD	1598	62	84	01.78-12.88	■
2.0 Cat (TUL) (N6T)	Type 80-120	Gasolina	RWD	1993	57	78	11.85-09.92	■
2.0 (N6TS)		Gasolina	RWD	1993	60	82	10.85-03.91	■
2.0 (TTE, TTL, TTS) (NAT)	Type 80-120	Gasolina	RWD	1994	57	78	01.86-09.92	■
2.0 (TTE, TTL, TTS) (NAV)	Type 80-120	Gasolina	RWD	1994	57	78	01.86-09.92	■
2.5 D (TTL, TTS, TUL, TUS, TTE) (4AB)	Type 80-120	Diesel	RWD	2496	50	68	01.86-01.89	■
2.5 DI (TTE, TTL, TTS, TUL) (4BA)	Type 80-120	Diesel	RWD	2496	52	71	09.88-09.92	■
2.5 DI (TTE, TTL, TTS, TUL) (4BB)	Type 80-120	Diesel	RWD	2496	52	71	09.88-09.92	■
2.5 DI (TTE, TTL, TTS, TUL) (4CA)	Type 80-120	Diesel	RWD	2496	52	71	09.88-09.92	■

LISTA DE APLICACIONES - BUYERS GUIDE

2.5 DI (TTE, TTL, TTS, TUL) (4CB)	Type 80-120	Diesel	RWD	2496	52	71	09.88-09.92	■
TRANSIT III (T_ _) 09.85-09.92					Van (LCVs-N1 Segment)			
1.6 (TAS) (LAT)	Type 80-120	Gasolina	RWD	1593	46	63	09.85-09.92	■
1.6 (L3C)	Type 80-120	Gasolina	RWD	1598	62	84	10.85-07.87	■
2.0 (NAW)	Type 80-120	Gasolina	RWD	1993	56	76	10.85-03.91	■
2.0 (NAX)	Type 80-120	Gasolina	RWD	1993	56	76	10.85-03.91	■
2.0	Type 80-120	Gasolina	FWD	1993	60	82	10.85-03.91	■
2.0 (TAL, TAS, TGL, TWS) (NAT)	Type 80-120	Gasolina	RWD	1994	57	78	09.85-09.92	■
2.0 (TAL, TAS, TGL, TWS) (NAV)	Type 80-120	Gasolina	RWD	1994	57	78	09.85-09.92	■
2.5 D (TAL, TAS, TGL, TWS) (4AB)	Type 80-120	Diesel	RWD	2496	50	68	01.86-09.91	■
2.5 D (TAL, TAS, TGL, TWS) (4BA)	Type 80-120	Diesel	RWD	2496	52	71	10.88-09.91	■
2.5 D (TAL, TAS, TGL, TWS) (4CA)	Type 80-120	Diesel	RWD	2496	52	71	10.88-09.91	■
2.5 D (4AE)		Diesel	RWD	2496	60	82	10.85-03.91	■