

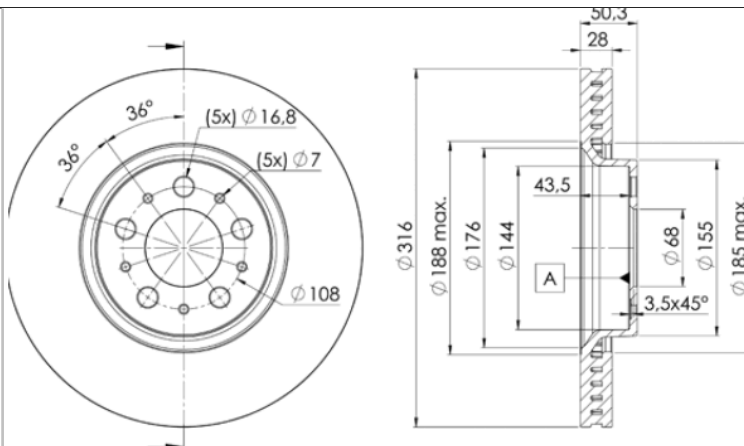
LISTA DE APLICACIONES - BUYERS GUIDE

78BD6074-2



Weight: 18.110

O.E.M.	MAKE
3 063 607 4	VOLVO
3 073 640 6	VOLVO



78BD6074-2

E1 90R-02C0592/1756



Ø316x28x50.4

MAKE
VOLVO



Trac.	CC	Kw	CV		
					Front / Rear

VOLVO

S60 (384) 07.00-04.10

Saloon (Compact executive car-D Segment)

2.4 (B 5244 T4)		Gasolina	FWD	2435	132	180	01.05-10.06	■
2.4 Bifuel (LPG) (B 5244 SG2)		Gasol./G as (LPG)	FWD	2435	103	140	07.01-04.10	■
2.4 D (D 5244 T5)	Rim 16, Rim 17	Diesel	FWD	2400	120	163	07.05-12.09	■
2.4 CDI (D 5244 T3)		Diesel	FWD	2401	85	116	10.03-12.05	■
2.4 D (D 5244 T6)		Diesel	FWD	2401	90	122	05.05-12.06	■

XC90 (275) 06.02-01.15

SUV (Luxury Crossover SUV-J Segment)

2.5 T AWD (B 5254 T9)	Rim 16	Gasolina	4WD	2497	154	209	10.12-09.14	■
2.5	Rim 16	Gasolina	FWD	2521	153	208	01.03-12.06	■
2.5 AWD	Rim 16	Gasolina	4WD	2521	153	208	06.02-12.14	■
2.5 T AWD (B 5254 T2)	Rim 16	Gasolina	4WD	2521	154	209	10.02-09.14	■
T6 AWD (B 6294 T)	Rim 16	Gasolina	4WD	2922	200	272	10.02-12.06	■
3.2 (B 6324 S)	Rim 16	Gasolina	FWD	3192	175	238	09.11-09.14	■
3.2 AWD (B 6324 S)	Rim 16	Gasolina	4WD	3192	175	238	03.06-12.10	■
3.2 (B 6324 S5)	Rim 16	Gasolina	FWD	3192	179	243	09.11-09.14	■
V8 AWD (B 8444 S)	Rim 16	Gasolina	4WD	4414	232	316	01.05-12.10	■
V8 AWD (B 8444 S)	Rim 16	Gasolina	4WD	4414	235	320	09.04-12.05	■
D3 / D5 (D 5244 T5)	Rim 16	Diesel	FWD	2400	120	163	04.09-12.14	■
D5 AWD (D 5244 T5)		Diesel	4WD	2400	120	163	10.07-12.10	■
D5 AWD (D 5244 T18)	Rim 16	Diesel	4WD	2400	147	200	01.11-12.14	■
D5 AWD (D 5244 T18)		Diesel	4WD	2400	155	211	11.13-09.14	■
D5 AWD (D 5244 T)	Rim 16	Diesel	4WD	2401	120	163	10.02-12.06	■
D5 AWD (D 5244 T4)	Rim 16	Diesel	4WD	2401	136	185	04.05-12.12	■

LISTA DE APLICACIONES - BUYERS GUIDE

XC90 VAN (275) 06.02-01.15				SUV Van (Luxury Crossover SUV-J Segment)			
2.4 D5 AWD	Diesel	4WD	2400	147	200	09.13-12.14	■
2.4 D4	Diesel	FWD	2401	120	163	09.13-12.14	■