

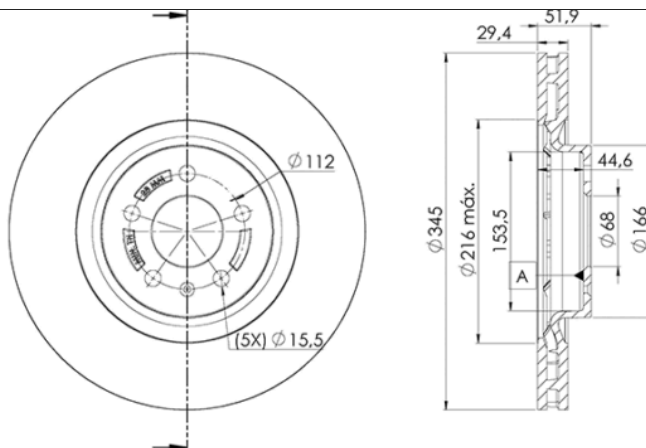
LISTA DE APLICACIONES - BUYERS GUIDE

78BD6078-2



Weight: 21.880

O.E.M.	MAKE
8K0 615 301 B	AUDI
8K0 615 301 E	AUDI
8K0 615 301 K	AUDI
8K0 615 301 M	AUDI
8K0 615 301 Q	AUDI



78BD6078-2

E1 90R-02C0074/1565



Ø345x29.4x51.9

MAKE
AUDI



Trac.	CC	Kw	CV	
				Front / Rear

AUDI

A4 IV B8 (8K2) 08.07-06.17

Saloon (Compact executive car-D Segment)

2.0 TFSI quattro (CFKA)		Gasolina	4WD	1984	132	180	11.09-03.12	■
S4 quattro (CAKA)	PR 1LJ	Gasolina	4WD	2995	245	333	11.08-12.15	■
S4 quattro (CCBA)	PR 1LJ	Gasolina	4WD	2995	245	333	11.08-12.15	■
S4 quattro (CGWC)	PR 1LJ	Gasolina	4WD	2995	245	333	11.08-12.15	■
S4 quattro (CGXC)	PR 1LJ	Gasolina	4WD	2995	245	333	11.08-12.15	■
S4 quattro (CREC)	PR 1LJ	Gasolina	4WD	2995	245	333	11.08-12.15	■
S4 quattro (CTUB)	PR 1LJ	Gasolina	4WD	2995	245	333	11.08-12.15	■

A4 IV B8 Avant (8K5) 11.07-06.17

Estate (Compact executive car-D Segment)

S4 quattro (CAKA)	PR 1LJ	Gasolina	4WD	2995	245	333	11.08-12.15	■
S4 quattro (CCBA)	PR 1LJ	Gasolina	4WD	2995	245	333	11.08-12.15	■
S4 quattro (CGWC)	PR 1LJ	Gasolina	4WD	2995	245	333	11.08-12.15	■
S4 quattro (CGXC)	PR 1LJ	Gasolina	4WD	2995	245	333	11.08-12.15	■
S4 quattro (CREC)	PR 1LJ	Gasolina	4WD	2995	245	333	11.08-12.15	■
S4 quattro (CTUB)	PR 1LJ	Gasolina	4WD	2995	245	333	11.08-12.15	■

A5 (8F7) 02.09-10.17

Convertible (Compact executive car-D Segment)

S5 quattro (CAKA)	PR 1LJ	Gasolina	4WD	2995	245	333	06.09-01.17	■
S5 quattro (CCBA)	PR 1LJ	Gasolina	4WD	2995	245	333	06.09-01.17	■
S5 quattro (CGWC)	PR 1LJ	Gasolina	4WD	2995	245	333	06.09-01.17	■
S5 quattro (CGXC)	PR 1LJ	Gasolina	4WD	2995	245	333	06.09-01.17	■
S5 quattro (CREC)	PR 1LJ	Gasolina	4WD	2995	245	333	06.09-01.17	■
S5 quattro (CTDA)	PR 1LJ	Gasolina	4WD	2995	245	333	06.09-01.17	■
S5 quattro (CTUB)	PR 1LJ	Gasolina	4WD	2995	245	333	06.09-01.17	■

LISTA DE APLICACIONES - BUYERS GUIDE

A5 (8T3) 06.07-10.17					Coupe (Compact executive car-D Segment)			
S5 quattro (CAUA)		Gasolina	4WD	4163	260	354	06.07-03.12	■
A5 Sportback (8TA) 07.07-10.17					Hatchback (Compact executive car-D Segment)			
S5 quattro (CAKA)	PR 1LJ	Gasolina	4WD	2995	245	333	01.10-01.17	■
S5 quattro (CGWC)	PR 1LJ	Gasolina	4WD	2995	245	333	01.10-01.17	■
S5 quattro (CREC)	PR 1LJ	Gasolina	4WD	2995	245	333	01.10-01.17	■
S5 quattro (CTDA)	PR 1LJ	Gasolina	4WD	2995	245	333	01.10-01.17	■
Q5 (U.S.A. 8R) 09.08-12.10					Closed Off-Road Vehicle (Luxury Crossover SUV-J Segment)			
3.2	PR 1LJ	Gasolina	FWD		201	274	09.08-12.10	■
Q5 (8RB) 11.08-12.17					SUV Van (Luxury Crossover SUV-J Segment)			
2.0 TFSI quattro	PR 1LJ	Gasolina	4WD	1984	155	211	11.08-09.12	■
3.2 FSI quattro	PR 1LJ	Gasolina	4WD	3197	199	271	11.08-09.12	■
2.0 TDI	PR 1LJ	Diesel	FWD	1968	100	136	05.14-05.17	■
2.0 TDI	PR 1LJ	Diesel	FWD	1968	105	143	11.11-05.13	■
2.0 TDI quattro	PR 1LJ	Diesel	4WD	1968	125	170	11.08-09.12	■
3.0 TDI quattro	PR 1LJ	Diesel	4WD	2967	176	239	11.08-04.13	■
Q5 (8RB) 11.08-					SUV (Luxury Crossover SUV-J Segment)			
2.0 TFSI quattro (CAEB)	PR 1LJ	Gasolina	4WD	1984	155	211	11.08-09.12	■
2.0 TFSI quattro (CDNC)	PR 1LJ	Gasolina	4WD	1984	155	211	11.08-09.12	■
3.2 FSI quattro (CALB)	PR 1LJ	Gasolina	4WD	3197	199	270	11.08-12.12	■
2.0 TDI (CJCB)	PR 1LJ	Diesel	FWD	1968	100	136	11.10-05.17	■
2.0 TDI (CSUB)	PR 1LJ	Diesel	FWD	1968	100	136	11.10-05.17	■
2.0 TDI (CJCA)	PR 1LJ	Diesel	FWD	1968	105	143	11.10-05.13	■
2.0 TDI quattro (CAHA)	PR 1LJ	Diesel	4WD	1968	125	170	11.08-09.12	■
2.0 TDI quattro (CGLB)	PR 1LJ	Diesel	4WD	1968	125	170	11.08-09.12	■
2.0 TDI quattro (CMGA)	PR 1LJ	Diesel	4WD	1968	125	170	11.08-09.12	■
3.0 TDI quattro (CCWA)	PR 1LJ	Diesel	4WD	2967	176	240	11.08-05.17	■
3.0 TDI quattro (CPNB)	PR 1LJ	Diesel	4WD	2967	176	240	11.08-05.17	■