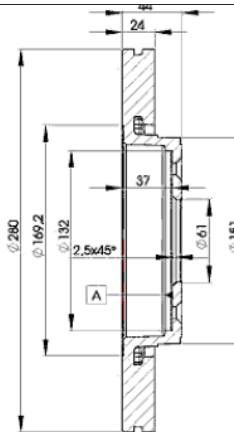
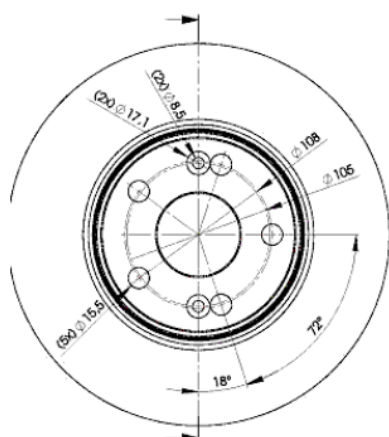


LISTA DE APLICACIONES - BUYERS GUIDE

78BD6198-2



Weight: 14.644



78BD6198-2

E1 90R-02C0433/0090



Ø280x24x44

MAKE
RENAULT



Trac.	CC	Kw	CV	
				Front / Rear

RENAULT

ESPACE III (JE0_) 11.96-10.02

						MPV (Large MPV-M1 Segment)			
2.0 (JE0A) (F3R 728)		Gasolina	FWD	1998	84	114	11.96-10.00	■	
2.0 (JE0A) (F3R 729)		Gasolina	FWD	1998	84	114	11.96-10.00	■	
2.0 (JE0A) (F3R 742)		Gasolina	FWD	1998	84	114	11.96-10.00	■	
2.0 (JE0A) (F3R 768)		Gasolina	FWD	1998	84	114	11.96-10.00	■	
2.0 (JE0A) (F3R 769)		Gasolina	FWD	1998	84	114	11.96-10.00	■	
2.0 (F4R 700)		Gasolina	FWD	1998	102	139	09.01-10.02	■	
2.0 (F4R 701)		Gasolina	FWD	1998	102	139	09.01-10.02	■	
3.0 (JE0D) (Z7X 775)		Gasolina	FWD	2963	123	167	11.96-10.98	■	
1.9 dTi (JE0M) (F9Q 722)		Diesel	FWD	1870	72	98	02.99-10.02	■	
2.2 12V TD (JE0E, JE0H, JE0P) (G8T 714)		Diesel	FWD	2188	83	113	11.96-10.00	■	
2.2 12V TD (JE0E, JE0H, JE0P) (G8T 716)		Diesel	FWD	2188	83	113	11.96-10.00	■	
2.2 12V TD (JE0E, JE0H, JE0P) (G8T 760)		Diesel	FWD	2188	83	113	11.96-10.00	■	
2.2 D (G8T 716)		Diesel	FWD	2188	84	114	11.97-01.00	■	
2.2 dCi (JE0S) (G9T 710)	01/02-	Diesel	FWD	2188	85	115	07.00-10.02	■	

KANGOO II / GRAND KANGOO (KW0/1_) 02.08-

						MPV (Mini MPV-M1 Segment)			
1.5 dCi 95 (KW16) (K9K 872)		Diesel	FWD	1461	70	95	03.19-	■	

KANGOO II EXPRESS (FW0/1_) 02.08-

						Box Body/MPV (LCVs-N1 Segment)			
1.6		Gasolina	FWD	1598	81	110	09.08-	■	

LAGUNA I (B56_, 556_) 11.93-08.02

						Hatchback (Large family car-D Segment)			
1.8 16V (B563, B564) (F4P 760)	-12/00, RimHo 5	Gasolina	FWD	1783	88	120	04.98-03.01	■	
1.8 16V (B563, B564) (F4P 770)	-12/00, RimHo 5	Gasolina	FWD	1783	88	120	04.98-03.01	■	
1.8 (B56A/B) (F3P 720)	05/98-, -12/00	Gasolina	FWD	1794	66	90	11.93-03.01	■	

LISTA DE APLICACIONES - BUYERS GUIDE

1.8 (B56A/B) (F3P 724)	05/98-, -12/00	Gasolina	FWD	1794	66	90	11.93-03.01	■
1.8 (B56S/T/0) (F3P 670)	05/98-, -12/00	Gasolina	FWD	1794	66	90	08.95-03.01	■
1.8 (B56S/T/0) (F3P 678)	05/98-, -12/00	Gasolina	FWD	1794	66	90	08.95-03.01	■
1.8 (F3P 674)	05/98-, -12/00	Gasolina	FWD	1794	69	94	06.95-02.01	■
1.8 (B56Z) (F3P 720)	-12/00	Gasolina	FWD	1794	69	94	08.95-03.01	■
1.8 (B56Z) (F3P 724)	-12/00	Gasolina	FWD	1794	69	94	08.95-03.01	■
1.8 (F3P 676)	05/98-	Gasolina	FWD	1794	70	95	06.95-06.98	■
2.0 16V (B56D, B56M) (N7Q 700)		Gasolina	FWD	1948	102	139	06.95-03.01	■
2.0 16V (B56D, B56M) (N7Q 704)		Gasolina	FWD	1948	102	139	06.95-03.01	■
2.0 (N7Q 700)		Gasolina	FWD	1948	103	140	06.95-02.01	■
2.0 (N7Q 704)		Gasolina	FWD	1948	103	140	06.95-02.01	■
2.0 (556A) (F4R 780)		Gasolina	FWD	1998	102	139	09.99-02.01	■
2.0 16V (556A/B) (F4R 780)		Gasolina	FWD	1998	103	140	09.99-03.01	■
3.0 24V (B56V) (L7X 700)	-09/99	Gasolina	FWD	2946	140	190	03.97-03.01	■
3.0 24V (B56V) (L7X 701)	-09/99	Gasolina	FWD	2946	140	190	03.97-03.01	■
3.0 (B56E, B565, B56R) (Z7X 760)		Gasolina	FWD	2963	123	167	11.93-03.01	■
3.0 (B56E, B565, B56R) (Z7X 765)		Gasolina	FWD	2963	123	167	11.93-03.01	■
2.2 dT (B569) (G8T 760)	-09/99	Diesel	FWD	2188	83	113	03.96-03.01	■
LAGUNA I Grandtour (K56_) 09.95-08.02					Estate (Large family car-D Segment)			
3.0 24V (K56V) (L7X 700)	-05/98	Gasolina	FWD	2946	140	190	03.97-03.01	■
3.0 24V (K56V) (L7X 701)	-05/98	Gasolina	FWD	2946	140	190	03.97-03.01	■
3.0 (K56R, K565) (Z7X 765)		Gasolina	FWD	2963	123	167	02.96-03.01	■
2.2 D (K56F/2, S56F) (G8T 706)	RimHo 5	Diesel	FWD	2188	61	83	09.95-03.01	■
2.2 D (K56F/2, S56F) (G8T 752)	RimHo 5	Diesel	FWD	2188	61	83	09.95-03.01	■
2.2 D (K56F/2, S56F) (G8T 790)	RimHo 5	Diesel	FWD	2188	61	83	09.95-03.01	■
2.2 D (K56F/2, S56F) (G8T 794)	RimHo 5	Diesel	FWD	2188	61	83	09.95-03.01	■
2.2 dT (K569) (G8T 760)	RimHo 5	Diesel	FWD	2188	83	113	03.96-03.01	■
SAFRANE (B54_) 04.92-10.97					Hatchback (Executive car-E Segment)			
3.0 (Z7X 721)		Gasolina	FWD	2963	125	170	03.93-10.96	■
3.0 Biturbo 4x4 (B545) (Z7X 726)		Gasolina	4WD	2963	193	262	02.93-07.96	■
3.0 V6 (B54B, B544) (Z7X 721)		Gasolina	FWD	2975	123	167	12.92-07.96	■
3.0 V6 (B54B, B544) (Z7X 722)		Gasolina	FWD	2975	123	167	12.92-07.96	■
3.0 V6 (B54B, B544) (Z7X 723)		Gasolina	FWD	2975	123	167	12.92-07.96	■
3.0 V6 (B54B, B544) (Z7X 753)		Gasolina	FWD	2975	123	167	12.92-07.96	■
3.0 V6 4x4 (B54B, B544) (Z7X 721)		Gasolina	4WD	2975	123	167	12.92-07.96	■
3.0 V6 4x4 (B54B, B544) (Z7X 722)		Gasolina	4WD	2975	123	167	12.92-07.96	■
3.0 V6 4x4 (B54B, B544) (Z7X 723)		Gasolina	4WD	2975	123	167	12.92-07.96	■
3.0 (Z7X 723)		Gasolina	FWD	2975	125	170	02.93-06.96	■
2.5 dT (B548) (S8U 762)	04/96-	Diesel	FWD	2499	83	113	12.92-07.96	■
2.5 dT (B548) (S8U 763)	04/96-	Diesel	FWD	2499	83	113	12.92-07.96	■
SAFRANE II (B54_) 07.96-12.00					Hatchback (Executive car-E Segment)			
2.0 16V (B54L) (N7Q 710)	01/98-	Gasolina	FWD	1948	100	136	07.96-12.00	■
2.0 16V (B54L) (N7Q 711)	01/98-	Gasolina	FWD	1948	100	136	07.96-12.00	■
2.5 20V (B54F) (N7U 700)		Gasolina	FWD	2435	121	165	07.96-12.00	■
2.5 20V (B54F) (N7U 701)		Gasolina	FWD	2435	121	165	07.96-12.00	■
2.9 24V (B54N) (L7X 713)		Gasolina	FWD	2946	140	190	03.99-12.00	■
3.0 V6 (B54M) (Z7X 755)		Gasolina	FWD	2963	123	167	07.96-12.00	■
2.2 dT (B54G) (G8T 740)		Diesel	FWD	2188	83	113	07.96-12.00	■

LISTA DE APLICACIONES - BUYERS GUIDE

SCÉNIC (JA0/1_, FA0_) 08.99-07.10					MPV (Compact MPV-M1 Segment)			
2.0 16V RX4 (F4R 744)		Gasolina	4WD	1998	102	139	06.00-08.03	■
2.0 16V RX4 (F4R 746)		Gasolina	4WD	1998	102	139	06.00-08.03	■
1.9 dCi RX4 (F9Q 732)		Diesel	4WD	1870	74	101	12.02-08.03	■
1.9 dCi RX4 (F9Q 748)		Diesel	4WD	1870	74	101	12.02-08.03	■
1.9 dCi RX4 (F9Q 796)		Diesel	4WD	1870	74	101	12.02-08.03	■
1.9 dCi RX4 (F9Q 740)		Diesel	4WD	1870	75	102	11.00-08.03	■