

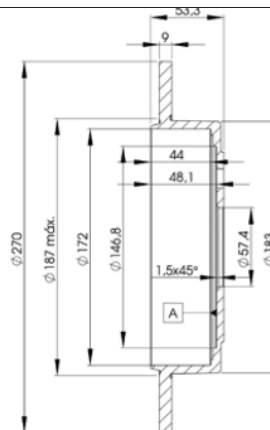
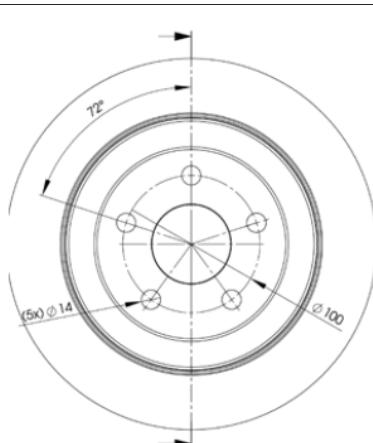
# LISTA DE APLICACIONES - BUYERS GUIDE

## 78BD6433-2



Weight: 8.270

O.E.M.	MAKE
4779101 AA	CHRYSLER



## 78BD6433-2

E1 90R-02C0241/1191



Ø270x9x53.3

MAKE
CHRYSLER
DODGE
PLYMOUTH



Trac.	CC	Kw	CV		
					Front / Rear

### CHRYSLER

CIRRUS 05.94-09.00						Saloon (Large family car-D Segment)		
2.0 LX (ECB)		Gasolina	FWD	1996	96	131	05.94-09.97	■
2.0 LX (ECB)		Gasolina	FWD	1996	98	133	10.97-09.00	■
2.4 LX (EDZ)		Gasolina	FWD	2429	103	140	05.94-09.00	■
2.5 LX (EEB)		Gasolina	FWD	2497	120	163	10.94-09.00	■
LE BARON VI-VII 09.86-01.97						Convertible (Executive car-E Segment)		
2.2 i Turbo (EDR)		Gasolina	FWD	2213	130	177	09.86-12.90	■
2.5 i (EDM)		Gasolina	FWD	2501	75	101	09.86-12.93	■
2.5 i Turbo (EDT)		Gasolina	FWD	2501	112	152	01.89-12.93	■
LE BARON VI-VII 01.86-12.93						Coupe (Executive car-E Segment)		
2.5 (EDM)		Gasolina	FWD	2501	75	101	09.86-12.93	■
LE BARON VI-VII / PHANTOM 09.86-12.94						Saloon (Executive car-E Segment)		
2.5 i (EDM)		Gasolina	FWD	2501	75	101	01.89-12.94	■
2.5 i Turbo (EDT)		Gasolina	FWD	2501	112	152	01.89-12.94	■
NEON (PL) 05.94-09.00						Saloon (Compact car-C Segment)		
1.8 16V (EBD)		Gasolina	FWD	1796	85	116	09.97-08.99	■
2.0 16V (420H)		Gasolina	FWD	1996	98	133	05.94-08.99	■
2.0 16V (ECC)	10/96-	Gasolina	FWD	1996	107	145	06.94-08.99	■
2.0 16V (ECC)		Gasolina	FWD	1996	112	152	10.94-09.98	■
NEON II 08.99-12.06						Saloon (Compact car-C Segment)		
1.8 (EBD)		Gasolina	FWD	1796	91	124	01.00-12.01	■
2.0 16V R/T (ECH)		Gasolina	FWD	1996	112	152	10.01-12.04	■

# LISTA DE APLICACIONES - BUYERS GUIDE

<b>NEW YORKER XIII 09.87-12.93</b>					<b>Saloon (Luxury car-F Segment)</b>			
3.0		Gasolina	FWD	2972	105	143	09.88-12.89	■
<b>PT CRUISER (PT_) 06.00-12.10</b>					<b>Estate (Compact car-C Segment)</b>			
2.4		Gasolina	FWD	2429	112	152	06.00-12.10	■
2.4		Gasolina	FWD	2429	134	182	09.03-12.09	■
2.4 (EDV)		Gasolina	FWD	2429	169	230	09.04-12.10	■
<b>SEBRING II / CIRRUS (JR) 09.00-06.07</b>					<b>Saloon (Executive car-E Segment)</b>			
2.4 (EDZ)		Gasolina	FWD	2429	112	152	04.01-06.07	■
2.4 Turbo (EDV)		Gasolina	FWD	2429	164	223	09.01-06.07	■
2.7 V6 24V (EER)		Gasolina	FWD	2736	149	203	04.01-06.07	■
2.7 V6 24V (EES)		Gasolina	FWD	2736	149	203	04.01-06.07	■
<b>SEBRING / CIRRUS (JR) 04.01-06.07</b>					<b>Convertible (Executive car-E Segment)</b>			
2.0 (ECC)		Gasolina	FWD	1996	104	141	04.01-06.07	■
2.4 Turbo (EDV)		Gasolina	FWD	2429	164	223	09.01-06.07	■
2.7 V6 24V (EER)		Gasolina	FWD	2736	149	203	04.01-06.07	■
2.7 V6 24V (EES)		Gasolina	FWD	2736	149	203	04.01-06.07	■
2.7 Flexfuel (EER)		Gasol./Etanol	FWD	2736	149	203	09.02-12.06	■
<b>STRATUS (JX) 04.96-04.01</b>					<b>Convertible (Large family car-D Segment)</b>			
2.0 LE (420X)		Gasolina	FWD	1996	96	131	06.96-04.01	■
2.5 LX (625H)		Gasolina	FWD	2499	120	163	04.96-04.01	■
<b>STRATUS (JA) 09.94-04.01</b>					<b>Saloon (Large family car-D Segment)</b>			
2.0 LE (C00)		Gasolina	FWD	1996	96	131	12.95-04.01	■
2.0 16V (ECB)		Gasolina	FWD	1996	98	133	12.95-04.01	■
2.4 16V (EDZ)		Gasolina	FWD	2429	103	140	12.95-04.01	■
2.4 16V (EDZ)		Gasolina	FWD	2429	112	152	12.95-04.01	■
2.5 LX V6 (EEB)		Gasolina	FWD	2497	120	163	12.95-04.01	■
2.5 LX V6 (H00)		Gasolina	FWD	2497	120	163	12.95-04.01	■
2.5 V6 (H00)		Gasolina	FWD	2497	125	170	12.95-04.01	■
<b>DODGE</b>								
<b>AVENGER (U.S.A.) 09.94-12.00</b>					<b>Coupe (Sports car-S Segment)</b>			
2.5 (EEB)		Gasolina	FWD	2497	122	166	09.94-12.00	■
<b>STRATUS 09.94-04.01</b>					<b>Saloon (Large family car-D Segment)</b>			
2.4 16V (EDZ)		Gasolina	FWD	2429	103	140	12.95-04.01	■
2.4 16V (EDZ)		Gasolina	FWD	2429	112	152	12.95-04.01	■
2.5 V6 (EEB)		Gasolina	FWD	2497	125	170	12.95-04.01	■
<b>STRATUS II 10.00-10.06</b>					<b>Saloon (Executive car-E Segment)</b>			
2.4 SE (EDZ)		Gasolina	FWD	2429	105	143	10.00-09.02	■
2.4 STX (EDZ)		Gasolina	FWD	2429	112	152	10.00-10.06	■
2.7 VVT (EER)		Gasolina	FWD	2736	148	201	10.00-10.06	■
<b>PLYMOUTH</b>								
<b>SUNDANCE 03.86-09.94</b>					<b>Coupe (Compact car-C Segment)</b>			
2.2 (EDF)		Gasolina	FWD	2213	67	91	10.89-09.94	■
2.2 (EDF)		Gasolina	FWD	2213	72	98	03.86-09.89	■
2.2 Turbo		Gasolina	FWD	2213	109	148	03.86-09.89	■
2.2 Turbo (EDR)		Gasolina	FWD	2213	129	175	10.89-09.91	■

# LISTA DE APLICACIONES - BUYERS GUIDE

SUNDANCE 03.86-09.94					Saloon (Compact car-C Segment)			
2.2 (EDF)		Gasolina	FWD	2213	67	91	10.89-09.94	■
2.2 (EDF)		Gasolina	FWD	2213	72	98	03.86-09.89	
2.2 Turbo		Gasolina	FWD	2213	109	148	03.86-09.89	
2.2 Turbo (EDR)		Gasolina	FWD	2213	129	175	10.89-09.91	