

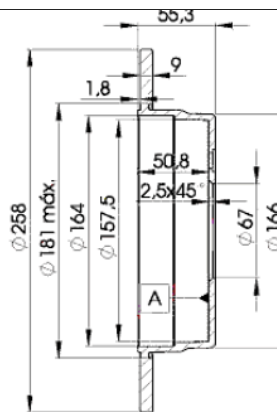
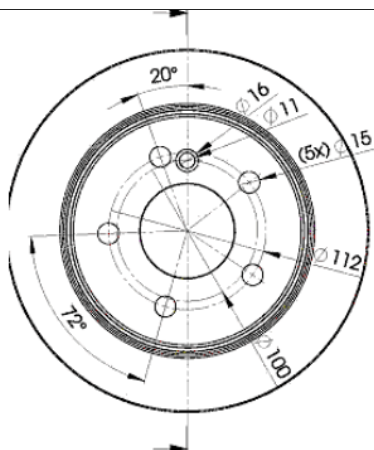
# LISTA DE APLICACIONES - BUYERS GUIDE

## 78BD6470-2



Weight: 6.580

O.E.M.	MAKE
201 423 09 12	MERCEDES-BENZ
201 423 11 12	MERCEDES-BENZ
201 423 12 12	MERCEDES-BENZ



## 78BD6470-2

E1 90R-02C0453/0107



Ø258x9x53.5

MAKE
MERCEDES-BENZ



Trac.	CC	Kw	CV	
				Front / Rear

### MERCEDES-BENZ

124 (C124) 03.87-07.93						Coupe (Executive car-E Segment)			
200 CE (124.041) (M 102.963)		Gasolina	RWD	1996	87	118	03.90-12.92		■
200 CE (124.041) (M 102.963)		Gasolina	RWD	1996	90	122	03.90-12.92		■
220 CE (124.042) (M 111.960)		Gasolina	RWD	2199	110	150	10.92-05.93		■
230 CE (124.043) (M 102.982)		Gasolina	RWD	2298	97	132	03.87-12.92		■
230 CE Cat (124.043) (M 102.982)		Gasolina	RWD	2298	97	132	06.89-12.92		■
230 CE (124.043) (M 102.982)		Gasolina	RWD	2298	100	136	03.87-12.92		■
300 CE (124.050) (M 103.983)		Gasolina	RWD	2960	132	180	03.87-05.93		■
300 CE (M 103.983)		Gasolina	RWD	2960	138	188	03.87-12.89		■
124 (W124) 12.84-08.93						Saloon (Executive car-E Segment)			
200 (124.020) (M 102.922)		Gasolina	RWD	1996	75	102	01.86-05.90		■
200 (M 102.922)		Gasolina	RWD	1996	77	105	01.86-10.92		■
200 (124.020) (M 102.922)		Gasolina	RWD	1996	80	109	12.85-05.90		■
200 E (124.021) (M 102.963)		Gasolina	RWD	1996	87	118	09.88-08.93		■
200 E (124.021) (M 102.963)		Gasolina	RWD	1996	90	122	09.88-12.89		■
200 E		Gasolina	RWD	1997	77	105	11.92-05.93		■
200 E (124.019) (M 111.940)		Gasolina	RWD	1998	100	136	10.92-06.93		■
220 E (124.022) (M 111.960)		Gasolina	RWD	2199	110	150	10.92-06.93		■
230 E (124.023) (M 102.982)		Gasolina	RWD	2298	97	132	12.84-03.92		■
230 E Cat (124.023) (M 102.982)		Gasolina	RWD	2298	97	132	06.89-06.93		■
230 E (124.023) (M 102.982)		Gasolina	RWD	2298	100	136	01.85-06.93		■
260 E (124.026) (M 103.940)		Gasolina	RWD	2597	118	160	09.85-08.92		■
260 E 4-matic (124.226) (M 103.943)		Gasolina	4WD	2597	118	160	09.86-08.92		■
260 E (124.026) (M 103.940)		Gasolina	RWD	2597	122	166	09.85-12.89		■

# LISTA DE APLICACIONES - BUYERS GUIDE

260 E 4-matic (124.226) (M 103.940)		Gasolina	4WD	2597	122	166	12.86-12.89	■
280 E (124.028) (M 104.942)		Gasolina	RWD	2799	145	197	10.92-06.93	■
300 E (124.030) (M 103.983)		Gasolina	RWD	2960	132	180	08.85-08.92	■
300 E 4-matic (124.230) (M 103.985)		Gasolina	4WD	2960	132	180	09.86-06.93	■
300 E (M 103.980)		Gasolina	RWD	2960	138	188	01.85-12.85	■
300 E (M 103.983)		Gasolina	RWD	2960	138	188	06.85-08.92	■
300 E 4-matic (M 103.983)		Gasolina	4WD	2960	138	188	09.86-02.92	■
300 E-24 (124.031) (M 104.980)	vehicles with ASR	Gasolina	RWD	2960	162	220	09.88-08.92	■
200 D (124.120) (OM 601.912)		Diesel	RWD	1997	53	72	12.84-08.89	■
200 D (124.120) (OM 601.912)		Diesel	RWD	1997	55	75	08.89-06.93	■
250 D (124.125) (OM 602.912)		Diesel	RWD	2497	66	90	04.85-06.93	■
250 D (124.125) (OM 602.912)		Diesel	RWD	2497	69	94	01.89-06.93	■
250 Turbo-D (124.128) (OM 602.962)		Diesel	RWD	2497	93	126	09.88-06.93	■
300 D (124.130) (OM 603.912)		Diesel	RWD	2996	80	109	12.84-08.89	■
300 D 4-matic (124.330) (OM 603.913)		Diesel	4WD	2996	80	109	09.86-08.92	■
300 D (124.130) (OM 603.912)		Diesel	RWD	2996	81	110	06.90-06.93	■
300 D (124.130) (OM 603.912)		Diesel	RWD	2996	83	113	08.89-06.93	■
300 D 4-matic (124.330) (OM 603.913)		Diesel	4WD	2996	83	113	08.89-06.93	■
300 Turbo-D (124.133) (OM 603.960)		Diesel	RWD	2996	105	143	09.86-09.88	■
300 Turbo-D (124.133) (OM 603.963)		Diesel	RWD	2996	105	143	09.86-09.88	■
300 Turbo-D 4-matic (124.333) (OM 603.960)		Diesel	4WD	2996	105	143	09.86-09.88	■
300 Turbo-D 4-matic (124.333) (OM 603.963)		Diesel	4WD	2996	105	143	09.86-09.88	■
300 Turbo-D (124.133) (OM 603.960)		Diesel	RWD	2996	108	147	09.88-06.93	■
300 Turbo-D 4-matic (124.333) (OM 603.963)		Diesel	4WD	2996	108	147	01.88-06.93	■
3.4 300 TD SD		Diesel	RWD	3449	110	150	06.91-05.93	■
<b>124 T-Model (S124) 09.85-12.93</b>					<b>Estate (Executive car-E Segment)</b>			
200 TE (124.079) (M 111.940)		Gasolina	RWD	1998	100	136	05.86-06.93	■
220 TE (124.082) (M 111.960)		Gasolina	RWD	2199	110	150	10.92-05.93	■
260 TE FGST. (M 103.940)		Gasolina	RWD	2597	118	160	09.89-08.92	■
260 TE FGST. (M 103.940)		Gasolina	RWD	2597	122	166	09.85-12.89	■
280 TE (124.088) (M 104.942)		Gasolina	RWD	2799	145	197	10.92-06.93	■
300 TE 4-matic (124.290) (M 103.985)		Gasolina	4WD	2960	132	180	09.86-06.93	■
300 TE 4-matic (124.290) (M 103.983)		Gasolina	4WD	2960	138	188	09.86-12.89	■
250 T D (124.185) (OM 602.912)		Diesel	RWD	2497	66	90	09.85-06.93	■
250 T D (124.185) (OM 602.912)		Diesel	RWD	2497	69	94	01.89-06.93	■
300 TD T		Diesel	RWD	2996	100	136	06.92-05.93	■
<b>190 (W201) 10.82-08.93</b>					<b>Saloon (Compact executive car-D Segment)</b>			
E 1.8 (201.018) (M 102.910)		Gasolina	RWD	1797	80	109	04.90-08.93	■
2.0 (201.022) (M 102.921)		Gasolina	RWD	1996	66	90	10.82-10.84	■
2.0 (201.023) (M 102.924)		Gasolina	RWD	1996	75	102	01.86-05.90	■
2.0 (201.023) (M 102.924)		Gasolina	RWD	1996	77	105	08.83-05.90	■
E 2.0 (201.024) (M 102.961)		Gasolina	RWD	1996	83	113	02.85-12.86	■
E 2.0 (201.024) (M 102.962)		Gasolina	RWD	1996	83	113	02.85-12.86	■
E 2.0 (201.024) (M 102.962)		Gasolina	RWD	1996	85	116	02.85-12.86	■
E 2.0 (M 102.962)		Gasolina	RWD	1996	87	118	01.85-08.93	■
E 2.0 (201.024) (M 102.961)		Gasolina	RWD	1996	90	122	10.82-06.93	■
E 2.0 (201.024) (M 102.962)		Gasolina	RWD	1996	90	122	10.82-06.93	■
E 2.0 (M 102.961)		Gasolina	RWD	1996	93	126	10.82-06.93	■
E 2.3 (M 102.985)	10/88-	Gasolina	RWD	2298	97	132	09.86-08.91	■
E 2.3 (201.028) (M 102.985)	10/88-	Gasolina	RWD	2298	100	136	10.86-08.93	■

# LISTA DE APLICACIONES - BUYERS GUIDE

E 2.3-16 (M 102.983)	Gasolina	RWD	2298	125	170	09.85-12.87	■
E 2.3-16 (M 102.983)	Gasolina	RWD	2298	130	177	09.85-08.88	■
E 2.3-16 (201.034) (M 102.983)	Gasolina	RWD	2298	136	185	04.84-01.87	■
2.3 (M 102.985)	Gasolina	RWD	2299	97	132	09.87-09.88	■
2.3 E (M 102.985)	Gasolina	RWD	2299	100	136	10.82-09.88	■
E 2.5-16 Evolution (201.036) (M 102.991)	Gasolina	RWD	2498	143	194	03.89-08.93	■
E 2.5-16 (201.035) (M 102.990)	Gasolina	RWD	2498	150	204	09.88-08.93	■
E 2.5-16 Evolution II (M 102.992)	Gasolina	RWD	2498	173	235	05.90-08.93	■
E 2.6 (201.029) (M 103.942)	Gasolina	RWD	2597	118	160	09.86-08.93	■
E 2.6 (M 103.942)	Gasolina	RWD	2597	122	166	09.86-12.89	■
2.6 (M 103.942)	Gasolina	RWD	2599	118	160	10.82-09.88	■
D 2.0 (201.122) (OM 601.911)	Diesel	RWD	1997	53	72	08.83-08.89	■
D 2.0 (201.122) (OM 601.911)	Diesel	RWD	1997	55	75	08.89-08.93	■
D 2.5 (201.126) (OM 602.911)	Diesel	RWD	2497	66	90	04.85-08.93	■
D 2.5 (201.126) (OM 602.911)	Diesel	RWD	2497	69	94	08.89-08.93	■
Turbo-D 2.5 (201.128) (OM 602.961)	Diesel	RWD	2497	90	122	02.88-08.93	■
Turbo-D 2.5 (201.128) (OM 602.961)	Diesel	RWD	2497	93	126	02.88-08.93	■
<b>E-Class (A124) 05.93-03.98</b>				<b>Convertible (Executive car-E Segment)</b>			
E 200 (124.060) (M 111.940)	Gasolina	RWD	1998	100	136	06.93-03.98	■
E 220 (124.062) (M 111.960)	Gasolina	RWD	2199	110	150	06.93-03.98	■
<b>E-Class (C124) 06.93-06.97</b>				<b>Coupe (Executive car-E Segment)</b>			
E 200 (124.040) (M 111.940)	Gasolina	RWD	1998	100	136	06.93-06.97	■
E 220 (124.042) (M 111.960)	Gasolina	RWD	2199	110	150	06.93-06.97	■
<b>E-Class (W124) 02.93-06.96</b>				<b>Saloon (Executive car-E Segment)</b>			
E 200 (124.019) (M 111.940)	Gasolina	RWD	1998	100	136	06.93-06.95	■
E 220 (124.022) (M 111.960)	Gasolina	RWD	2199	110	150	06.93-06.95	■
E 280 (124.029) (M 104.942)	Gasolina	RWD	2799	142	193	06.93-06.95	■
E 280 (124.028) (M 104.942)	Gasolina	RWD	2799	145	197	06.93-06.95	■
E 300 4-matic (124.230) (M 103.985)	Gasolina	4WD	2960	132	180	06.93-06.95	■
E 200 D (124.120) (OM 601.912)	Diesel	RWD	1997	55	75	06.93-06.95	■
E 250 D (124.126, 124.129) (OM 605.911)	Diesel	RWD	2497	83	113	07.93-06.95	■
E 250 Turbo-D (124.128) (OM 602.962)	Diesel	RWD	2497	93	126	06.93-06.95	■
E 300 D (124.131) (OM 606.910)	Diesel	RWD	2996	100	136	07.93-06.95	■
E 300 Turbo-D (124.133) (OM 603.960)	Diesel	RWD	2996	108	147	06.93-06.95	■
E 300 Turbo-D 4-matic (124.333) (OM 603.963)	Diesel	4WD	2996	108	147	06.93-06.95	■
<b>E-Class T-Model (S124) 06.93-06.96</b>				<b>Estate (Executive car-E Segment)</b>			
E 200 T (124.079) (M 111.940)	Gasolina	RWD	1998	100	136	06.93-06.96	■
E 220 T (124.082) (M 111.960)	Gasolina	RWD	2199	110	150	06.93-06.96	■
E 280 T (124.088) (M 104.942)	Gasolina	RWD	2799	142	193	06.93-06.96	■
E 280 T (124.088) (M 104.942)	Gasolina	RWD	2799	145	197	06.93-06.96	■
E 300 T 4-matic (124.290) (M 103.985)	Gasolina	4WD	2960	132	180	06.93-06.96	■
E 250 TD (124.186) (OM 605.911)	Diesel	RWD	2497	83	113	06.93-06.96	■
E 250 Turbo D (OM 602.962)	Diesel	RWD	2497	93	126	06.93-06.96	■
E 300 TD (124.191) (OM 606.910)	Diesel	RWD	2996	100	136	06.93-06.96	■
E 300 T Turbo-D (124.193) (OM 603.960)	Diesel	RWD	2996	108	147	06.93-06.96	■
E 300 T Turbo-D 4-matic (124.393) (OM 603.963)	Diesel	4WD	2996	108	147	06.93-06.96	■