

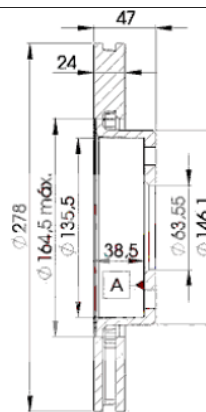
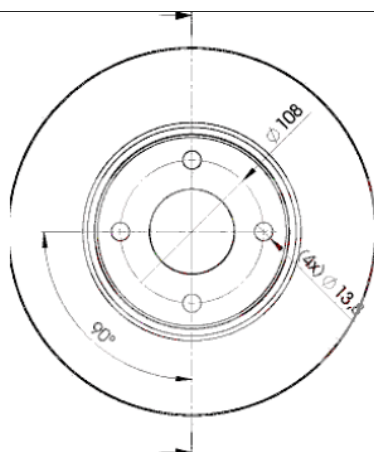
LISTA DE APLICACIONES - BUYERS GUIDE

78BD6785-2



Weight: 12.804

O.E.M.	MAKE
5 026 785	FORD
6 676 462	FORD
F8RZ-1125-CA	FORD
F8RZ-1125-EA	FORD



78BD6785-2

E1 90R-02C0433/0090



Ø278x24x47

MAKE
AC
FORD
FORD USA
MERCURY



Trac.	CC	Kw	CV
-------	----	----	----



Front / Rear

AC

ACE 01.95-10.98

					Convertible (Sports car-S Segment)			
4.9 (1NMB CFL) (99E)		Gasolina	RWD	4942	191	260	01.95-10.98	■

ACE II 10.98-

					Convertible (Sports car-S Segment)			
3.5 (1NMB HF6)		Gasolina	RWD	3506	260	354	11.99-12.00	■
4.6 (1NMB CFN)		Gasolina	RWD	4601	226	307	11.99-12.00	■
4.6 (1NMB CFN)		Gasolina	RWD	4601	240	326	10.98-	■
4.9 (1NMB CFL) (99E)		Gasolina	RWD	4942	179	243	10.98-	■
4.9 Super Charger (1NMB HFL) (99E)		Gasolina	RWD	4942	239	325	10.98-	■

ACECA 01.92-12.01

					Coupe (Grand Tourer-S Segment)			
4.6 (1NMB HFL)		Gasolina	RWD	4601	240	326	10.98-12.01	■
4.9 (1NMB HFL) (99E)		Gasolina	RWD	4942	179	243	09.93-12.97	■
4.9 Super Charger (1NMB HFL) (99E)		Gasolina	RWD	4942	239	325	10.98-12.01	■

COBRA Mk IV 01.90-

					Convertible (Sports car-S Segment)			
4.9 Roadster (291N) (99H)		Gasolina	RWD	4942	168	228	09.97-08.99	■
4.9 (291F) (99F)		Gasolina	RWD	4942	184	250	01.90-10.97	■
4.9 Super Charger (291N) (99F)		Gasolina	RWD	4942	239	325	10.97-	■
4.9 (291F) (99UM)		Gasolina	RWD	4942	250	340	01.90-10.97	■
5.8 (291F)		Gasolina	RWD	5762	412	560	01.90-10.97	■

ME 01.79-12.86

					Coupe (Sports car-S Segment)			
3000 (RA) (LO6)		Gasolina	RWD	2994	103	140	01.79-12.86	■

FORD

LISTA DE APLICACIONES - BUYERS GUIDE

COUGAR (EC_) 08.98-12.01					Coupe (Sports car-S Segment)			
2.5 V6 24V (LCBB)	-08/01	Gasolina	FWD	2495	125	170	06.00-12.01	■
2.5 V6 24V (LCBC)	-08/01	Gasolina	FWD	2495	125	170	06.00-12.01	■
2.5 V6 24V (LCBE)	-08/01	Gasolina	FWD	2495	125	170	06.00-12.01	■
2.5 ST 200 (SGA)	-08/01	Gasolina	FWD	2495	151	205	01.00-12.01	■
2.5 V6 24V (LCBA)	-08/01	Gasolina	FWD	2544	125	170	08.98-12.01	■
2.5 V6 24V (LCBB)	-08/01	Gasolina	FWD	2544	125	170	08.98-12.01	■
2.5 V6 24V (LCBC)	-08/01	Gasolina	FWD	2544	125	170	08.98-12.01	■
2.5 V6 24V (LCBE)	-08/01	Gasolina	FWD	2544	125	170	08.98-12.01	■
MONDEO (GBP) 02.93-08.96					Hatchback (Large family car-D Segment)			
1.8 i 16V 4x4 (RKA)		Gasolina	4WD	1796	85	115	02.93-08.96	■
2.0 i 16V 4x4 (NGA)		Gasolina	4WD	1988	100	136	04.93-08.96	■
MONDEO (GBP) 01.93-08.96					Saloon (Large family car-D Segment)			
1.8 4x4 (RKA)		Gasolina	4WD	1796	85	116	02.93-08.96	■
2.0 i 16V 4x4 (NGA)		Gasolina	4WD	1988	100	136	02.93-08.96	■
MONDEO II (BAP) 08.96-09.00					Hatchback (Large family car-D Segment)			
2.5 24V (SEB)		Gasolina	FWD	2495	125	170	06.00-09.00	■
2.5 24V (SEC)		Gasolina	FWD	2495	125	170	06.00-09.00	■
2.5 ST 200 (SGA)		Gasolina	FWD	2495	151	205	05.99-09.00	■
2.5 24V (SEA)		Gasolina	FWD	2544	125	170	08.96-09.00	■
MONDEO II (BFP) 08.96-09.00					Saloon (Large family car-D Segment)			
2.5 24V (LCBD)		Gasolina	FWD	2495	125	170	06.00-09.00	■
2.5 24V (SEB)		Gasolina	FWD	2495	125	170	06.00-09.00	■
2.5 24V (SEC)		Gasolina	FWD	2495	125	170	06.00-09.00	■
2.5 ST 200 (SGA)		Gasolina	FWD	2495	151	205	05.99-09.00	■
2.5 24V (SEA)		Gasolina	FWD	2544	125	170	08.96-09.00	■
MONDEO II Turnier (BNP) 08.96-09.00					Estate (Large family car-D Segment)			
1.6 i (L1J)		Gasolina	FWD	1597	66	90	08.96-09.00	■
1.6 i 16V (L1L)		Gasolina	FWD	1597	70	95	05.98-09.00	■
1.6 i 16V (L1N)		Gasolina	FWD	1597	70	95	05.98-09.00	■
1.6 i 16V (L1Q)		Gasolina	FWD	1597	70	95	05.98-09.00	■
1.8 i (RKA)	Rim 15	Gasolina	FWD	1796	85	115	08.96-09.00	■
1.8 i (RKB)	Rim 15	Gasolina	FWD	1796	85	115	08.96-09.00	■
1.8 i (RKF)	Rim 15	Gasolina	FWD	1796	85	115	08.96-09.00	■
1.8 i (RKH)	Rim 15	Gasolina	FWD	1796	85	115	08.96-09.00	■
1.8 i (RKJ)	Rim 15	Gasolina	FWD	1796	85	115	08.96-09.00	■
1.8 i (RKK)	Rim 15	Gasolina	FWD	1796	85	115	08.96-09.00	■
2.0 i (NGA)	Rim 15	Gasolina	FWD	1988	96	131	08.96-09.00	■
2.0 i (NGB)	Rim 15	Gasolina	FWD	1988	96	131	08.96-09.00	■
2.0 i (NGC)	Rim 15	Gasolina	FWD	1988	96	131	08.96-09.00	■
2.0 i (NGD)	Rim 15	Gasolina	FWD	1988	96	131	08.96-09.00	■
2.5 24V (SEB)		Gasolina	FWD	2495	125	170	10.99-09.00	■
2.5 24V (SEC)		Gasolina	FWD	2495	125	170	10.99-09.00	■
2.5 ST 200 (SGA)		Gasolina	FWD	2495	151	205	05.99-09.00	■
2.5 24V (SEA)		Gasolina	FWD	2544	125	170	08.96-09.00	■
MONDEO Turnier (BNP) 01.93-08.96					Estate (Large family car-D Segment)			
2.5 i 24V (SEA)		Gasolina	FWD	2544	125	170	07.94-08.96	■

LISTA DE APLICACIONES - BUYERS GUIDE

SCORPIO II (GFR, GGR) 10.94-08.98					Saloon (Executive car-E Segment)			
2.9 i 24V (BOB)	Gasolina	RWD	2933		152	207	10.94-08.98	■
SCORPIO II Turnier (GNR, GGR) 10.94-08.98					Estate (Executive car-E Segment)			
2.9 i 24V (BOB)	Gasolina	RWD	2933		152	207	10.94-08.98	■
FORD USA								
CONTOUR (U.S.A.) 08.93-12.97					Saloon (Compact car-C Segment)			
2.0 S	Gasolina	FWD	1988		93	126	08.93-12.97	■
2.0	Gasolina	FWD	1988		96	131	09.97-08.00	■
2.5	Gasolina	FWD	2544		127	173	09.97-08.00	■
2.5 SE	Gasolina	FWD	2544		127	173	09.93-08.96	■
2.5 SVT	Gasolina	FWD	2544		149	203	09.97-08.00	■
MERCURY								
MYSTIQUE 02.94-08.01					Saloon (Compact car-C Segment)			
2.0	Gasolina	FWD	1988		93	126	02.94-08.01	■
2.0	Gasolina	FWD	1988		96	131	09.97-08.01	■