

LISTA DE APLICACIONES - BUYERS GUIDE

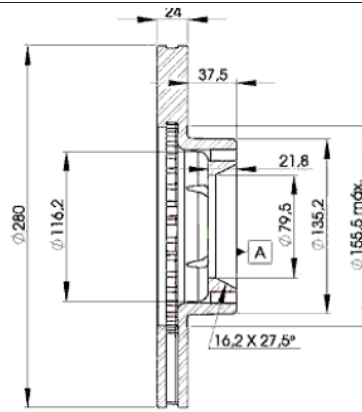
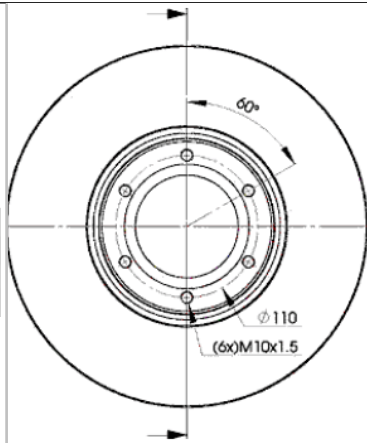
78BD6847-2



8 424073 148155

Weight: 14.384

O.E.M.	MAKE
45 00 098	OPEL
77 00 302 128	RENAULT
91 603 98	VAUXHALL



78BD6847-2



90R-02C0452/0118



Ø280.2x24x61.5

MAKE
OPEL
RENAULT
VAUXHALL



Trac.	CC	Kw	CV
-------	----	----	----



Front / Rear

OPEL

MOVANO (X70) 07.98-

						Bus (Minibus-M2-Segment)		
2.5 DTI (JD)		Diesel	FWD	2463	73	99	10.03-08.06	■
2.5 D (JD) (S8U 770)		Diesel	FWD	2499	59	80	07.98-09.00	■
2.5 D (JD) (S8U 772)		Diesel	FWD	2499	59	80	07.98-09.00	■
2.8 DTI (JD) (S9W 700)	-08/00	Diesel	FWD	2799	84	114	07.98-10.01	■
2.8 DTI (JD) (S9W 702)	-08/00	Diesel	FWD	2799	84	114	07.98-10.01	■

MOVANO (X70) 01.99-

						Dump Truck (Volquete-N2 Segment)		
2.5 D (ED, HD, UD0, UD4) (S8U 770)		Diesel	FWD	2499	59	80	01.99-09.00	■
2.5 D (ED, HD, UD0, UD4) (S8U 772)		Diesel	FWD	2499	59	80	01.99-09.00	■
2.8 DTI (ED, HD, UD0, UD4) (S9W 700)	-08/00	Diesel	FWD	2799	84	114	01.99-10.01	■
2.8 DTI (ED, HD, UD0, UD4) (S9W 702)	-08/00	Diesel	FWD	2799	84	114	01.99-10.01	■

MOVANO (X70) 07.98-

						Platform/Chassis (LCVs-N1 Segment)		
2.5 D (ED, HD, UD0, UD4) (S8U 770)		Diesel	FWD	2499	59	80	07.98-09.00	■
2.5 D (ED, HD, UD0, UD4) (S8U 772)		Diesel	FWD	2499	59	80	07.98-09.00	■
2.8 DTI (ED, HD, UD0, UD4) (S9W 700)	-08/00	Diesel	FWD	2799	84	114	07.98-10.01	■
2.8 DTI (ED, HD, UD0, UD4) (S9W 702)	-08/00	Diesel	FWD	2799	84	114	07.98-10.01	■

MOVANO (X70) 01.99-

						Van (LCVs-N1 Segment)		
2.5 D (FD) (S8U 770)		Diesel	FWD	2499	59	80	01.99-09.00	■
2.5 D (FD) (S8U 772)		Diesel	FWD	2499	59	80	01.99-09.00	■
2.8 DTI (FD) (S9W 700)	-08/00	Diesel	FWD	2799	84	114	01.99-10.01	■
2.8 DTI (FD) (S9W 702)	-08/00	Diesel	FWD	2799	84	114	01.99-10.01	■

RENAULT

LISTA DE APLICACIONES - BUYERS GUIDE

MASTER II (JD) 12.97-01.10					Bus (Minibus-M2-Segment)			
2.5 D (S8U 770)	-08/00	Diesel	FWD	2499	59	80	07.98-01.01	■
2.5 D (S8U 772)	-08/00	Diesel	FWD	2499	59	80	07.98-01.01	■
2.8 dTi (S9W 702)	-08/00	Diesel	FWD	2799	84	114	07.98-10.01	■
MASTER II (ED/HD/UD) 12.97-03.13					Platform/Chassis (LCVs-N1 Segment)			
2.5 dCi (G9U 650)		Diesel	FWD	2463	74	101	08.06-01.10	■
2.5 dCi (G9U 650)		Diesel	FWD	2463	88	120	08.06-01.11	■
2.5 dCi (G9U 632)		Diesel	FWD	2463	107	146	08.06-01.10	■
2.5 D (S8U 770)	-07/00	Diesel	FWD	2499	59	80	07.98-01.01	■
2.5 D (S8U 772)	-07/00	Diesel	FWD	2499	59	80	07.98-01.01	■
2.8 dTi (S9W 702)	-07/00	Diesel	FWD	2799	84	114	07.98-10.01	■
MASTER II (FD) 12.97-12.13					Van (LCVs-N1 Segment)			
2.5 D (S8U 770)	-07/00	Diesel	FWD	2499	59	80	07.98-01.01	■
2.5 D (S8U 772)	-07/00	Diesel	FWD	2499	59	80	07.98-01.01	■
2.8 dTi (S9W 702)	-07/00	Diesel	FWD	2799	84	114	07.98-10.01	■
VAUXHALL								
MOVANO Mk I (A) (X70) 10.98-05.10					Bus (Minibus-M2-Segment)			
1.9 DTi (JD) (F9Q 770)		Diesel	FWD	1870	59	80	09.00-10.01	■
2.5 D (JD) (S8U 770)		Diesel	FWD	2499	59	80	10.98-09.00	■
2.8 DTi (JD) (S9W 702)	-08/00	Diesel	FWD	2799	84	114	10.98-10.01	■
MOVANO Mk I (A) (X70) 10.98-12.10					Platform/Chassis (LCVs-N1 Segment)			
2.5 CDTi (UD0, ED) (G9U 754)		Diesel	FWD	2464	73	99	11.03-12.06	■
2.5 D (UD0) (S8U 770)	-02/00	Diesel	FWD	2499	59	80	10.98-08.02	■
2.5 D (UD0) (S8U 772)	-02/00	Diesel	FWD	2499	59	80	10.98-08.02	■
2.8 DTi (UD0, ED, HD) (S9W 702)	-08/00	Diesel	FWD	2799	84	114	10.98-10.01	■
MOVANO Mk I (A) (X70) 10.98-12.10					Van (LCVs-N1 Segment)			
1.9 DTi (FD) (F9Q 770)		Diesel	FWD	1870	59	80	09.00-10.01	■
2.5 (FD) (G9U 754)		Diesel	FWD	2464	73	99	11.03-12.06	■
2.5 D (FD) (S8U 770)	-02/00	Diesel	FWD	2499	59	80	10.98-09.00	■
2.8 TDi (FD) (S9W 702)	-08/00	Diesel	FWD	2799	84	114	10.98-10.01	■