

# LISTA DE APLICACIONES - BUYERS GUIDE

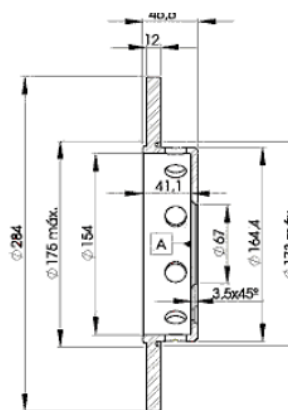
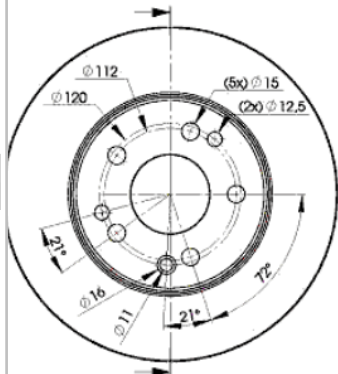
## 78BD7210-2



8 424073 148322

Weight: 10.160

| O.E.M.        | MAKE          |
|---------------|---------------|
| 124 421 13 12 | MERCEDES-BENZ |



## 78BD7210-2

E1 90R-02C0100/0036



Ø284x12x46.6

**MAKE**  
MERCEDES-BENZ



| Trac. | CC | Kw | CV |
|-------|----|----|----|
|-------|----|----|----|



Front / Rear

### MERCEDES-BENZ

#### 124 (C124) 03.87-07.93

#### Coupe (Executive car-E Segment)

|                              |          |     |      |     |     |             |   |
|------------------------------|----------|-----|------|-----|-----|-------------|---|
| 200 CE (124.041) (M 102.963) | Gasolina | RWD | 1996 | 87  | 118 | 03.90-12.92 | ■ |
| 200 CE (124.041) (M 102.963) | Gasolina | RWD | 1996 | 90  | 122 | 03.90-12.92 | ■ |
| 230 CE (124.043) (M 102.982) | Gasolina | RWD | 2298 | 97  | 132 | 03.87-12.92 | ■ |
| 230 CE (124.043) (M 102.982) | Gasolina | RWD | 2298 | 100 | 136 | 03.87-12.92 | ■ |

#### 124 (W124) 12.84-08.93

#### Saloon (Executive car-E Segment)

|                              |          |          |      |      |     |             |   |
|------------------------------|----------|----------|------|------|-----|-------------|---|
| 200 (124.020) (M 102.922)    | Gasolina | RWD      | 1996 | 75   | 102 | 01.86-05.90 | ■ |
| 200 (M 102.922)              | Gasolina | RWD      | 1996 | 77   | 105 | 01.86-10.92 | ■ |
| 200 (124.020) (M 102.922)    | Gasolina | RWD      | 1996 | 80   | 109 | 12.85-05.90 | ■ |
| 200 E (124.021) (M 102.963)  | Gasolina | RWD      | 1996 | 87   | 118 | 09.88-08.93 | ■ |
| 200 E (124.021) (M 102.963)  | Gasolina | RWD      | 1996 | 90   | 122 | 09.88-12.89 | ■ |
| 200 E                        | Gasolina | RWD      | 1997 | 77   | 105 | 11.92-05.93 | ■ |
| 200 E (124.019) (M 111.940)  | Gasolina | RWD      | 1998 | 100  | 136 | 10.92-06.93 | ■ |
| 230 E (124.023) (M 102.982)  | Gasolina | RWD      | 2298 | 97   | 132 | 12.84-03.92 | ■ |
| 230 E (124.023) (M 102.982)  | -09/88   | Gasolina | RWD  | 2298 | 100 | 01.85-06.93 | ■ |
| 200 D (124.120) (OM 601.912) | Diesel   | RWD      | 1997 | 53   | 72  | 12.84-08.89 | ■ |
| 200 D (124.120) (OM 601.912) | Diesel   | RWD      | 1997 | 55   | 75  | 08.89-06.93 | ■ |
| 250 D (124.125) (OM 602.912) | Diesel   | RWD      | 2497 | 66   | 90  | 04.85-06.93 | ■ |
| 250 D (124.125) (OM 602.912) | Diesel   | RWD      | 2497 | 69   | 94  | 01.89-06.93 | ■ |
| 300 D (124.130) (OM 603.912) | Diesel   | RWD      | 2996 | 80   | 109 | 12.84-08.89 | ■ |
| 300 D (124.130) (OM 603.912) | Diesel   | RWD      | 2996 | 81   | 110 | 06.90-06.93 | ■ |
| 300 D (124.130) (OM 603.912) | Diesel   | RWD      | 2996 | 83   | 113 | 08.89-06.93 | ■ |
| 3.4 300 TD SD                | Diesel   | RWD      | 3449 | 110  | 150 | 06.91-05.93 | ■ |

# LISTA DE APLICACIONES - BUYERS GUIDE

| 124 T-Model (S124) 09.85-12.93          |        |          |     |      | Estate (Executive car-E Segment) |     |             |   |
|---|--------|----------|-----|------|----------------------------------|-----|-------------|---|
| 200 T (124.080) (M 102.922)             |        | Gasolina | RWD | 1996 | 77                               | 105 | 01.86-05.90 | ■ |
| 200 T (124.080) (M 102.922)             |        | Gasolina | RWD | 1996 | 80                               | 109 | 09.85-08.89 | ■ |
| 200 TE (124.081) (M 102.963)            |        | Gasolina | RWD | 1996 | 87                               | 118 | 09.88-08.92 | ■ |
| 200 TE (M 102.962)                      |        | Gasolina | RWD | 1996 | 90                               | 122 | 09.88-12.89 | ■ |
| 200 E                                   |        | Gasolina | RWD | 1997 | 77                               | 105 | 11.92-05.93 | ■ |
| 230 TE (124.083) (M 102.982)            | -08/88 | Gasolina | RWD | 2298 | 97                               | 132 | 09.85-08.92 | ■ |
| 230 TE (124.083) (M 102.982)            | -08/88 | Gasolina | RWD | 2298 | 100                              | 136 | 09.85-08.92 | ■ |
| 200 T D (124.180) (OM 601.912)          |        | Diesel   | RWD | 1997 | 53                               | 72  | 09.85-08.91 | ■ |
| 200 T D (124.180) (OM 601.912)          |        | Diesel   | RWD | 1997 | 55                               | 75  | 09.88-08.91 | ■ |
| 250 T D (124.185) (OM 602.912)          |        | Diesel   | RWD | 2497 | 66                               | 90  | 09.85-06.93 | ■ |
| 250 T D (124.185) (OM 602.912)          |        | Diesel   | RWD | 2497 | 69                               | 94  | 01.89-06.93 | ■ |
| 250 T D                                 |        | Diesel   | RWD | 2497 | 83                               | 113 | 06.92-05.93 | ■ |
| 250 TD Turbo (124.188) (OM 602.962)     |        | Diesel   | RWD | 2497 | 93                               | 126 | 03.88-07.93 | ■ |
| 300 T D (124.190) (OM 603.912)          |        | Diesel   | RWD | 2996 | 80                               | 109 | 09.86-06.93 | ■ |
| 300 T D (124.190) (OM 603.912)          |        | Diesel   | RWD | 2996 | 81                               | 110 | 01.89-06.93 | ■ |
| 300 T D (124.190) (OM 603.912)          |        | Diesel   | RWD | 2996 | 83                               | 113 | 01.89-06.93 | ■ |
| 300 TD T                                |        | Diesel   | RWD | 2996 | 100                              | 136 | 06.92-05.93 | ■ |
| E-Class (W124) 02.93-06.96              |        |          |     |      | Saloon (Executive car-E Segment) |     |             |   |
| E 200 D (124.120) (OM 601.912)          |        | Diesel   | RWD | 1997 | 55                               | 75  | 06.93-06.95 | ■ |
| E 250 D (124.126, 124.129) (OM 605.911) |        | Diesel   | RWD | 2497 | 83                               | 113 | 07.93-06.95 | ■ |
| E 300 D (124.131) (OM 606.910)          |        | Diesel   | RWD | 2996 | 100                              | 136 | 07.93-06.95 | ■ |
| E-Class T-Model (S124) 06.93-06.96      |        |          |     |      | Estate (Executive car-E Segment) |     |             |   |
| E 250 TD (124.186) (OM 605.911)         |        | Diesel   | RWD | 2497 | 83                               | 113 | 06.93-06.96 | ■ |
| E 300 TD (124.191) (OM 606.910)         |        | Diesel   | RWD | 2996 | 100                              | 136 | 06.93-06.96 | ■ |