

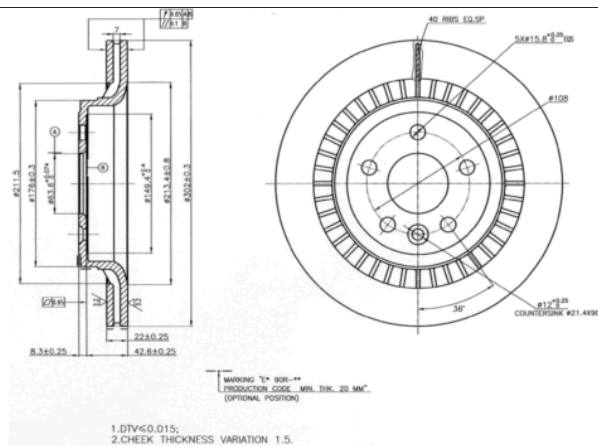
# LISTA DE APLICACIONES - BUYERS GUIDE

## 78BD7305-2



Weight: 14.712

O.E.M.	MAKE
31277357	VOLVO
31381987	VOLVO
31410569	VOLVO
31471033	VOLVO



## 78BD7305-2



Ø302x22x50.9

MAKE
VOLVO
VOLVO ASIA



Trac.	CC	Kw	CV
-------	----	----	----



Front / Rear

### VOLVO

XC60 (156) 05.08-					SUV (Compact SUV-J Segment)				
2.0 T5 Flexfuel		Gasolina	FWD	1969	162	220	09.14-		■
T5 (B 4204 T11)		Gasolina	FWD	1969	180	245	10.13-02.17		■
T5 (B 4204 T41)		Gasolina	FWD	1969	180	245	10.13-02.17		■
T5 AWD (B 4204 T11)		Gasolina	4WD	1969	180	245	10.15-02.17		■
T5 AWD (B 4204 T41)		Gasolina	4WD	1969	180	245	10.15-02.17		■
T6 (B 4204 T9)		Gasolina	FWD	1969	225	306	10.13-02.17		■
T6 AWD (B 4204 T9)		Gasolina	4WD	1969	225	306	10.13-12.17		■
2.0 T (B 4204 T6)		Gasolina	FWD	1999	149	203	12.09-12.12		■
T5 (B 4204 T7)		Gasolina	FWD	1999	177	241	09.10-02.17		■
T5 AWD (B 5254 T12)		Gasolina	4WD	2497	183	249	04.14-02.17		■
T5 AWD (B 5254 T12)		Gasolina	4WD	2497	187	254	04.14-02.17		■
T6 AWD (B 6304 T2)		Gasolina	4WD	2953	210	286	05.08-12.10		■
T6 AWD (B 6304 T4)		Gasolina	4WD	2953	224	304	03.10-02.17		■
T6 AWD (B 6304 T3)		Gasolina	4WD	2953	242	329	04.14-12.15		■
T6 AWD (B 6304 T4)		Gasolina	4WD	2953	242	329	04.14-12.15		■
3.2 (B 6324 S4)		Gasolina	FWD	3192	171	233	09.11-12.14		■
3.2		Gasolina	FWD	3192	175	238	09.09-12.10		■
3.2 AWD (B 6324 S)		Gasolina	4WD	3192	175	238	07.09-12.10		■
3.2 (B 6324 S5)		Gasolina	FWD	3192	179	243	09.11-12.14		■
3.2 AWD (B 6324 S5)		Gasolina	4WD	3192	179	243	03.10-12.15		■
D3 (D 4204 T4)		Diesel	FWD	1969	110	150	03.15-04.17		■
D4 (D 4204 T5)		Diesel	FWD	1969	133	181	10.13-12.15		■
D4 (D 4204 T14)		Diesel	FWD	1969	140	190	03.15-02.17		■

# LISTA DE APLICACIONES - BUYERS GUIDE

D3 (D 5204 T7)		Diesel	FWD	1984	100	136	04.12-12.15	■
D3 / D4 (D 5204 T2)		Diesel	FWD	1984	120	163	03.10-12.14	■
D3 / D4 (D 5204 T3)		Diesel	FWD	1984	120	163	03.10-12.14	■
2.4 D / D3 / D4 AWD (D 5244 T16)		Diesel	4WD	2400	120	163	05.08-02.17	■
2.4 D / D3 / D4 AWD (D 5244 T17)		Diesel	4WD	2400	120	163	05.08-02.17	■
2.4 D / D3 / D4 AWD (D 5244 T5)		Diesel	4WD	2400	120	163	05.08-02.17	■
2.4 D (D 5244 T14)		Diesel	FWD	2400	129	175	04.09-12.10	■
D4 AWD (D 5244 T12)		Diesel	4WD	2400	133	181	10.13-12.15	■
D5 AWD (D 5244 T4)		Diesel	4WD	2400	136	185	05.08-12.09	■
D4 AWD (D 5244 T21)		Diesel	4WD	2400	140	190	03.15-02.17	■
D5 AWD (D 5244 T10)		Diesel	4WD	2400	151	205	07.09-06.11	■
D5 (D 5244 T11)		Diesel	FWD	2400	158	215	06.11-02.17	■
D5 (D 5244 T15)		Diesel	FWD	2400	158	215	06.11-02.17	■
D5 AWD (D 5244 T11)		Diesel	4WD	2400	158	215	04.11-12.15	■
D5 AWD (D 5244 T15)		Diesel	4WD	2400	158	215	04.11-12.15	■
D5 AWD (D 5244 T20)		Diesel	4WD	2400	162	220	03.15-02.17	■
D5 AWD (D 5244 T22)		Diesel	4WD	2400	162	220	03.15-02.17	■
D5 AWD (D 5244 T23)		Diesel	4WD	2400	169	230	04.14-12.15	■
<b>XC60 VAN (156) 05.08-12.17</b>					<b>SUV Van (Compact SUV-J Segment)</b>			
D3		Diesel	FWD	1984	100	136	09.13-12.15	■
D4		Diesel	FWD	1984	120	163	09.13-02.17	■
D4 AWD		Diesel	4WD	2400	120	163	09.13-02.17	■
D5 AWD		Diesel	4WD	2400	158	215	09.13-02.17	■
<b>XC70 III (136) 04.07-</b>					<b>Estate (Executive car-E Segment)</b>			
D5 AWD (D 5244 T11)		Diesel	4WD	2400	158	215	04.11-12.15	■
D5 AWD (D 5244 T15)		Diesel	4WD	2400	158	215	04.11-12.15	■
<b>VOLVO ASIA</b>								
<b>XC60 11.14-</b>					<b>SUV (Compact SUV-J Segment)</b>			
2.0 T5		Gasolina	FWD	1969	180	245	11.14-	■
2.0 T5		Gasolina	FWD	1984	157	214	11.14-	■
2.5 T6		Gasolina	FWD	2497	187	254	11.14-	■